
San Diego Gas & Electric Company Master Special Use Permit and Permit to Construct Power Line Replacement Projects



**Informational Meeting
Draft EIR/EIS
California Public Utilities Commission
United States Forest Service
October 1, 2014**



Purpose of Meeting

- **Help understand the Draft EIR/EIS**
- **Provide Information on the Draft EIR/EIS Review Process**
- **Explain how the public can participate in the CPUC and federal decision making process**

Contents of Draft EIR/EIS

- Executive Summary
- A. Introduction
- B. Project Description
- C. Alternatives Development and Screening
- D. Environmental Analysis
- E. Comparison of Alternatives
- F. Cumulative Impacts
- G. Other Required CEQA/NEPA
- H. MMCRRP
- I. Public Participation
- J. Distribution of Draft EIR/EIS
- K. Report Preparation
- L. Index
- Appendices

Section A. Introduction

- Provides Project Background and Overview
- Provides Description of Contents of Draft EIR/EIS including Issues Addressed (see Table A-1)
- Describes Agency Use of the EIR/EIS
 - California Public Utilities Commission (CPUC): Permit to construct Power Line Replacement Projects within and outside the CNF
 - United States Forest Service: MSUP authorizing SDG&E facilities within the administrative boundary of the Cleveland National Forest (CNF)
 - Bureau of Land Management (BLM): authorizing SDG&E facilities on Public Lands administered by the BLM (4 miles)
 - Bureau of Indian Affairs (BIA): Power Line Replacement Projects on tribal lands (La Jolla, Yuima, Campo, Inaja/Cosmit, Viejas)
 - California State Parks (CSP): Power Line Replacement Projects within lands administered by CSP

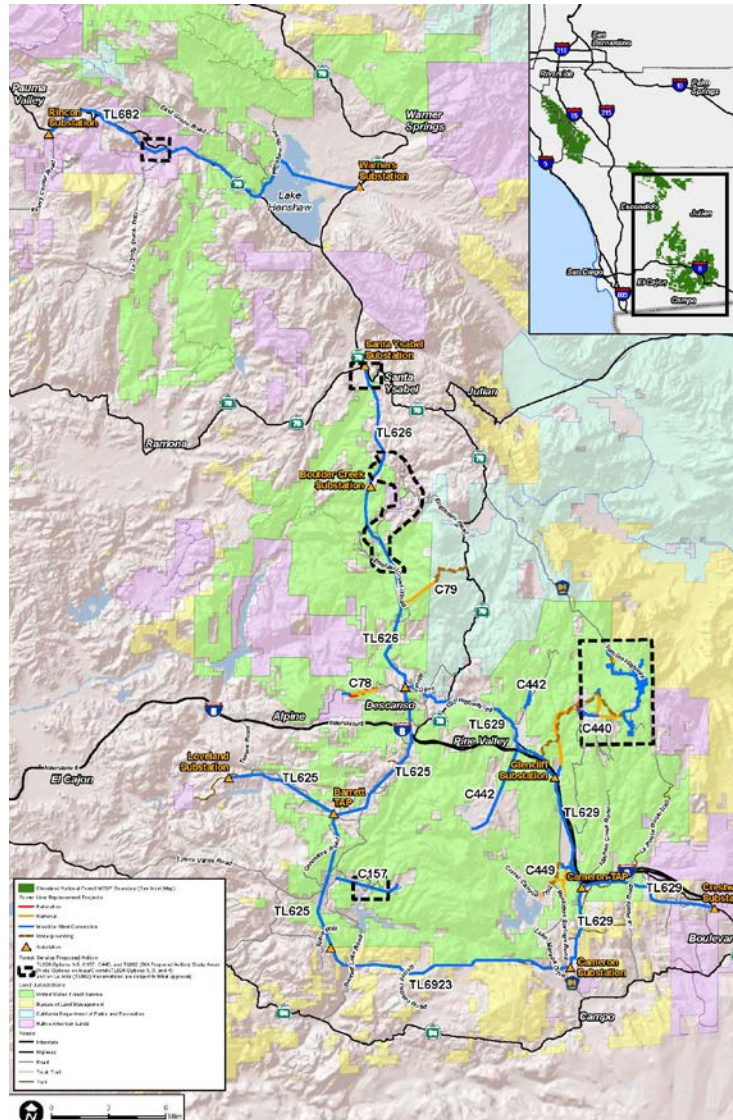
Section B. Project Description

- **SDG&E's Proposed Master Special Use Permit (MSUP)**
 - Consolidate into one MSUP previously-issued permits for the continued operation of SDG&E's 69 kV and 12 kV electric lines (102 miles), access roads (45 miles), and other ancillary facilities with the Cleveland National Forest
- **SDG&E's Proposed Power Line Replacement Projects**
 - Replace (5) existing 69 kV and (6) 12 kV electric lines (145 miles) by:
 - Fire hardening (wood-to-steel pole replacement)
 - Removal, relocation, undergrounding, and single to double circuit conversion along some segments
- **Federal Proposed Action**
 - Forest Service TL626 (relocates to avoid conflicts with LMP), C157 (relocates out of federal designated wilderness), C440 (additional undergrounding in Laguna Recreation Area)
 - BIA TL682 (undergrounds 1,500 feet on the La Jolla Reservation within an economic development zone)
 - BLM would authorize the facilities but does not modify SDG&E proposed actions for TL629, TL625, TL6923

Section B. Project Description

Where are SDG&E's Proposed Power Line Replacement Projects?

- TL625
- TL626
- TL629
- TL682
- TL6923
- C79
- C78
- C157
- C440
- C442
- C449



- EIR/EIS Project Location Figures
- B-1 Regional Overview Map
- B-2 Power Line Replacement Projects Overview Map
- B-2a Facilities Included Under the MSUP
- B-3 TL682 Overview Map
- B-4 TL626, C79 Overview Map
- B-4a Forest Service Proposed Action - TL626 Overland Routes (Options 1, 2, and 4)
- B-4b Forest Service Proposed Action - TL626 Underground Relocation in Boulder Creek Road (Options 3a and 3b)
- B-4c Forest Service Proposed Action - Reroute and Undergrounding around Inaja Picnic Area (Option 5)
- B-5 TL625, C78, C157 Overview Map
- B-5a Forest Service Proposed Action - C157 Partial Relocation to Avoid Designated Wilderness
- B-6 TL629, C440, C442, C449 Overview Map
- B-6a Forest Service Proposed Action - C440 Mount Laguna Recreation Area Underground Alternative
- B-7 TL6923 Overview Map

Section C. Alternatives Development

- **SDG&E Proposed Project – 26 alternatives considered, 11 project alternatives plus No Project and No Action evaluated**
- **Federal Proposed Action Required**
 - **Forest Service**
 - TL626 (5) options
 - C157 (2) options
 - C440
 - **BIA**
 - TL682
- **Additional Alternatives (17 considered, 2 analyzed)**
 - **Partial Removal of Overland Access**
 - **Removal of TL626 from Service**
 - Upgrade TL6931 (single circuit) or Modify TL625 (loop-in to Suncrest Substation)
- **No Action Alternative – No MSUP all SDG&E facilities removed from CNF**
- **No Project Alternative – Baseline conditions remain**

EIR/EIS Alternative Figures

C-1 Remove TL626 from Service - TL6931 Upgrades

C-2 Remove TL626 from Service - TL625 Loop-in

C-3 TL626 Alternative 1: Relocate Along State Route 79 – Eliminated

C-4 C157 Overhead and Underground Alternatives – Eliminated

Section D. Environmental Analysis

- D.1 Introduction
- D.2 Aesthetics
- D.3 Air Quality
- D.4 Biological Resources
- D.5 Cultural and Paleontological Resources
- D.6 Greenhouse Gas Emissions
- D.7 Public Health and Safety
- D.8 Fire and Fuels Management
- D.9 Hydrology and Water Quality-groundwater use
- D.10 Land Use and Planning
- D.11 Noise – Helicopter Use
- D.12 Public Services and Utilities
- D.13 Wilderness and Recreation
- D.14 Transportation and Traffic
- D.15 EMF

Section Contents

Environmental Setting/Affected Environment

Applicable Regulations, Plans, and Standards

Environmental Effects

Alternatives

Mitigation Monitoring, Compliance and Reporting

Residual Effects

Section E. Comparison of Alternatives

- **E.1 Regulatory Requirements**
- **E.2 Comparison under CEQA of SDG&E's Proposed Project with Federal Proposed Action**
- **E.3 Comparison under CEQA of SDG&E's Proposed Project with Additional alternatives**
- **E.4 CEQA Environmentally Superior Alternative**

Section E. Comparison of Alternatives

CEQA Environmentally Superior Alternative (after the No Project Alternative)

Environmentally Superior Alternative

Alternative	Jurisdiction
<i>Power Line Replacement Projects</i>	
SDG&E's proposed power line replacement projects: TL682, TL625, TL629, TL6923, C79, C78, C442, C440, C449.	CPUC, FS, BLM, BIA, and CSP to consider
Relocation of C157 out of wilderness (Option 2 City of San Diego Modified Alignment)	CPUC and FS to consider
Removal of TL626 and replacement with electric facilities within existing electric utility ROWs* <ul style="list-style-type: none"> • Reconstruction of TL6931 • Conversion of 13 miles of TL626 to 12 kV 	CPUC, FS, and BIA (Campo Reservation) to consider
<i>MSUP</i>	
Partial Removal of Overland Access Roads	FS to consider reduction of existing exclusive use access roads on National Forest lands.

BIA = Bureau of Indian Affairs, BLM = Bureau of Land Management, CPUC = California Public Utilities Commission, CSP = California State Parks, FS = Forest Service.

Note: *Reconstruction of TL6931 compared to developing the TL625 loop-in along the Sunrise Powerlink would rank similarly in terms of number of adverse impacts created vs reduced or eliminated. Reconstruction of TL6931 ranks higher due to the extensive work completed for TL6931, which provides a knowledge base that reduces the risk of impacting environmental resources (Sources: SDG&E 2012, TL6931 PEA).

- **Reduces all identified Class I Impacts to Class II or Class III except short-term construction air emissions.**

Section E. Comparison of Alternatives

- **E.5 Comparison of Alternatives under NEPA**
- **E.6 Federal Preferred Alternative**
 - TL626: Remove TL 626 and replace with upgrade TL6931, implement off-grid solution for Boulder Creek substation
 - TL682: BIA Proposed Action underground 1,500 feet
 - TL629, TL625 and TL 6923: Applicants proposed project with reduced roads option
 - C157: Relocate out of wilderness
 - C440: Additional undergrounding in Laguna Recreation Area
 - C442: Applicants proposed project with reduced roads option
- **E.7 Environmentally Preferable Alternative Under NEPA**

Other EIR/EIS Sections

- **Section F. Cumulative Scenario and Impacts**
 - Cumulative Projects
 - Cumulative Analysis
- **Section G Required CEQA/NEPA Topics**
 - Growth Inducing Effects
 - Adverse Environmental Effects
 - Effects Not Found To Be Significant
 - Compliance with Applicable Federal Environmental Regulations and Policies

Cumulative Analysis

Geographic Region

SDG&E Proposed Project

Federal Proposed Action

Additional Alternatives

Other EIR/EIS Sections

- **Section H Mitigation Monitoring, Compliance and Reporting Program**
 - Regulatory Background
 - Roles and Responsibilities
 - Communication
 - Minor Project Refinements
 - Mitigation Monitoring Program Table
- **Section I Public Participation**
 - Scoping Process
- **Section J Distribution of DEIR/DEIS**

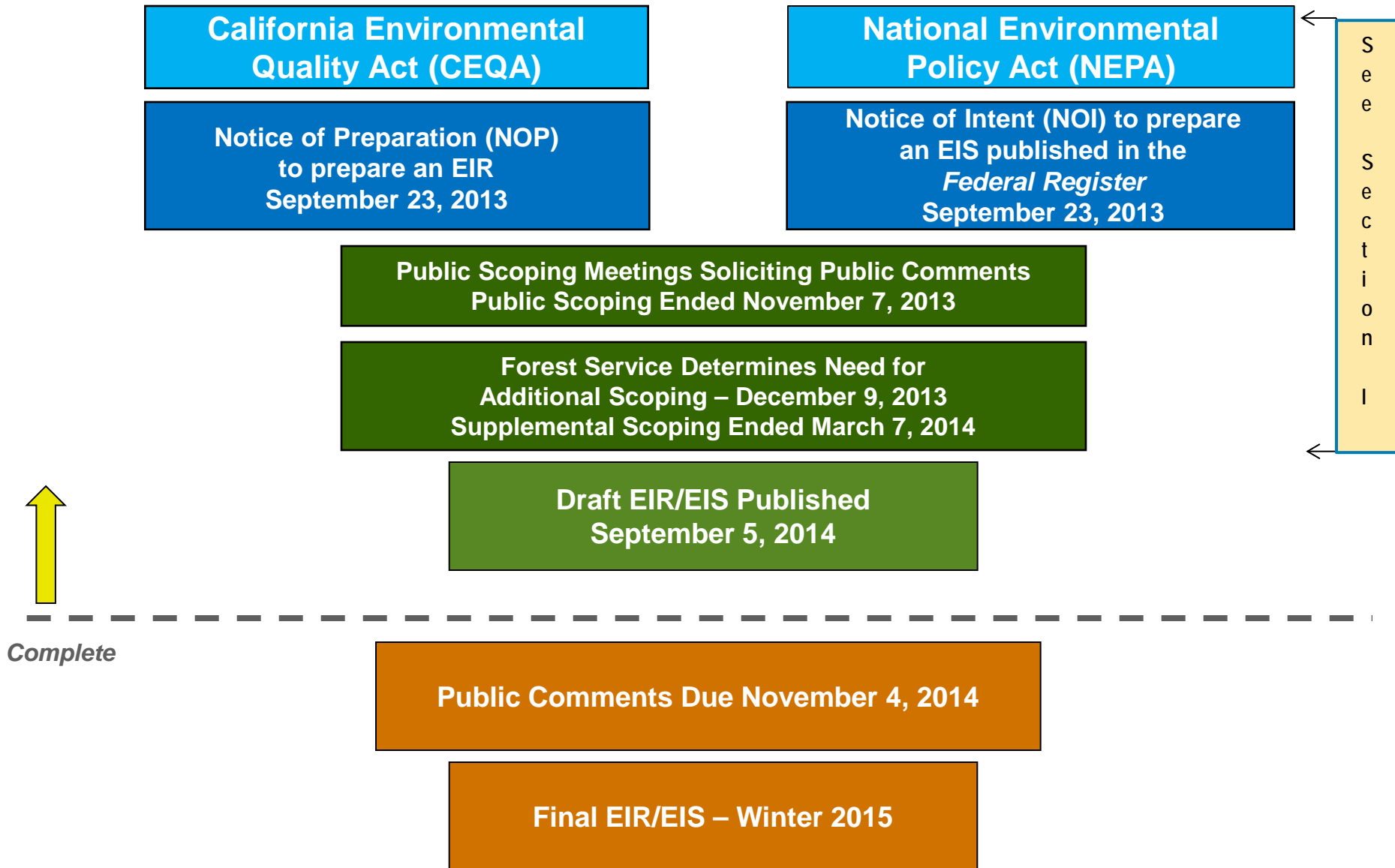
DEIR/DEIS Distribution

Opportunity to Comment

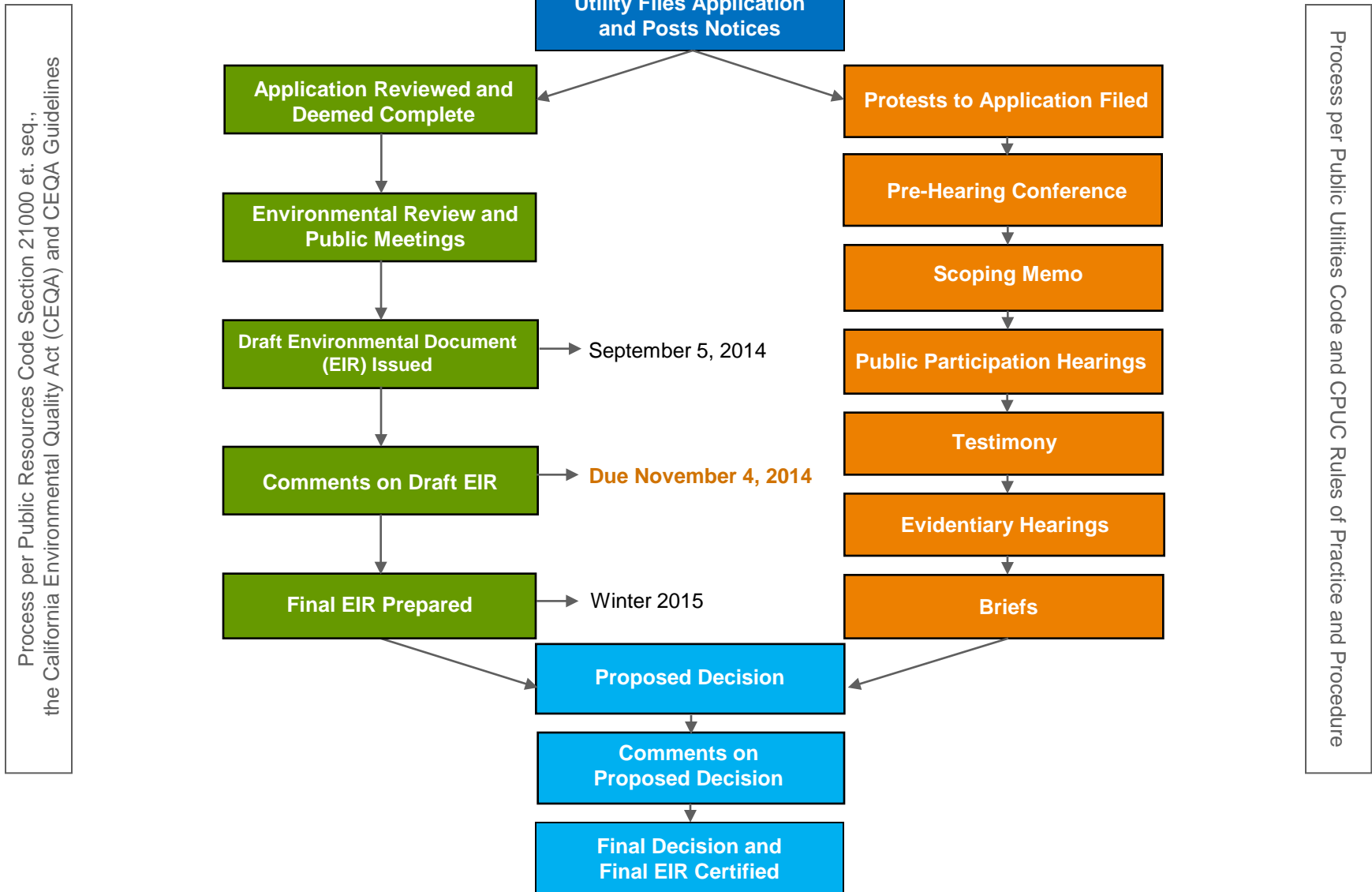
Public Meeting

Forest Service Objection Process

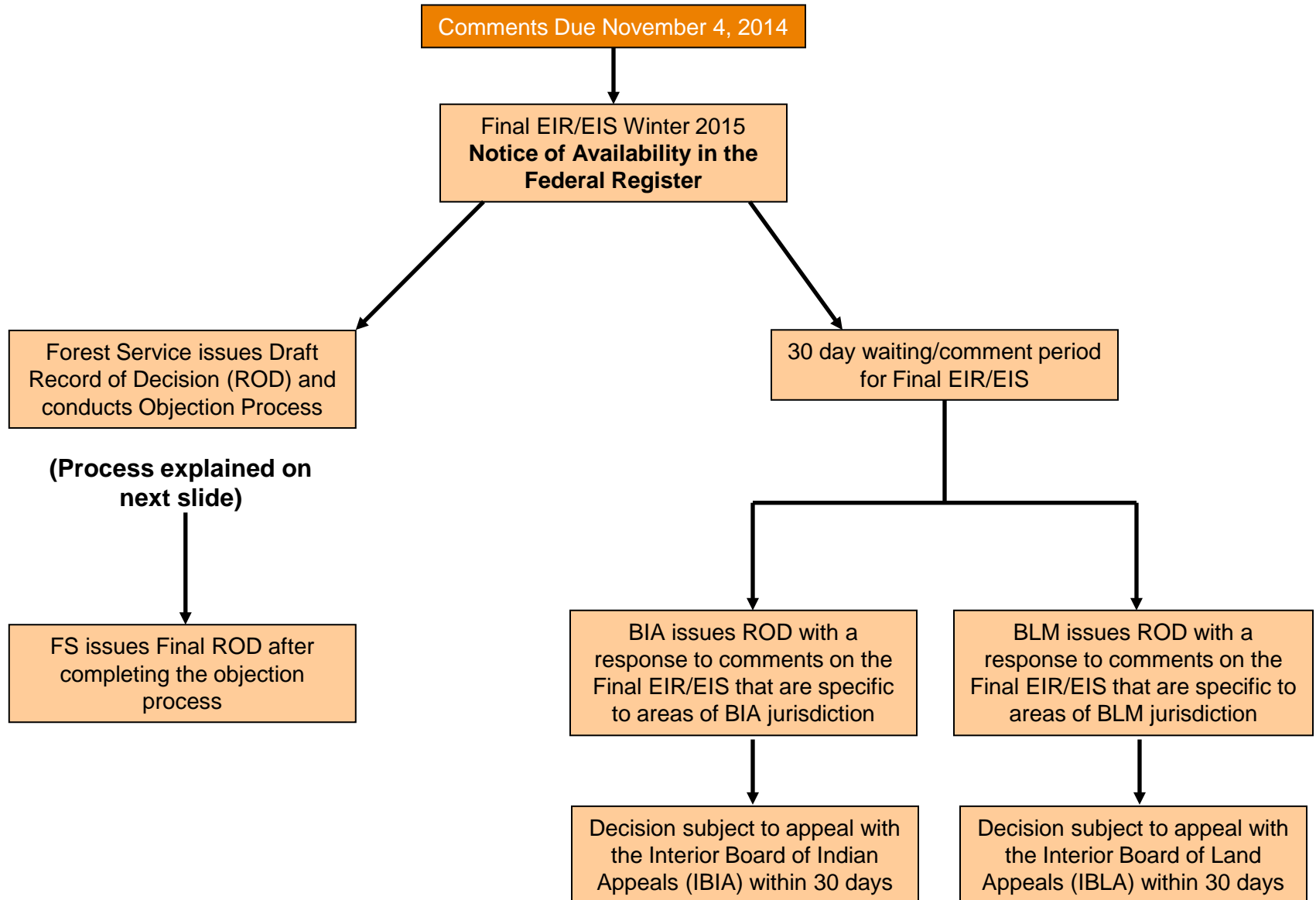
Environmental Review Process – Next Steps



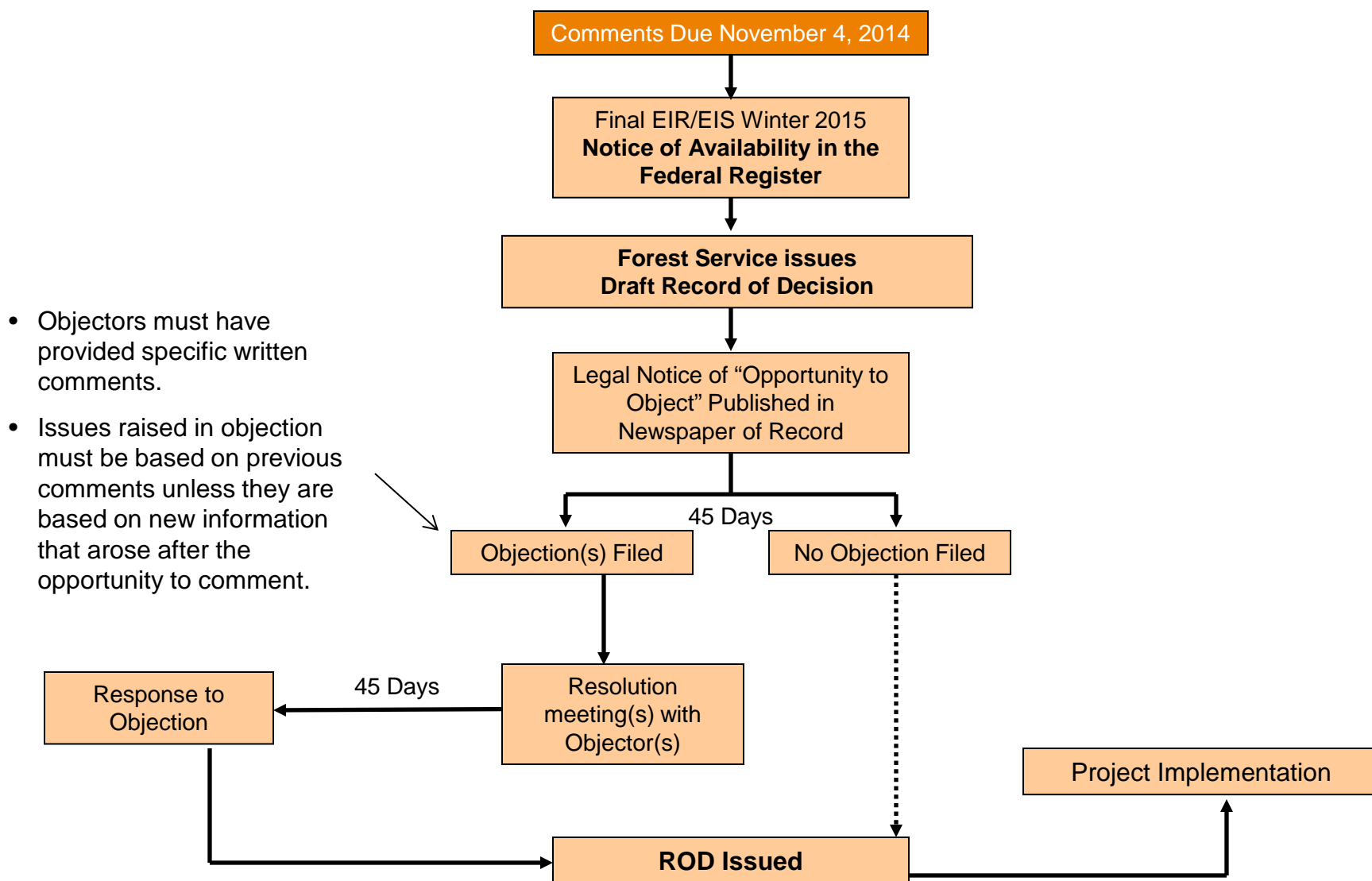
CPUC Review Process



Decision processes for the federal agencies



Forest Service Objection Process (36 CFR 218)



Written Comments

Please send comments to:

California Public Utilities Commission/U.S. Forest Service

Attn: Lisa Orsaba, CPUC Project Manager

Will Metz, Forest Supervisor, Cleveland National Forest

c/o Dudek

605 Third Street

Encinitas, California 92024

Or:

Email: cnfmsup@dudek.com

Subject Line: “SDG&E Master Permit – DEIR/DEIS Comments”

Public Review Ends:

November 4, 2014

Please be sure to include your name, address, and phone number on all comments.

For More Information

- **Check CPUC internet website:**

<http://www.cpuc.ca.gov/environment/info/dudek/CNF/CNF.htm>

Release of Final EIR/EIS anticipated Winter 2015

- **Information Repositories: 7 area libraries have project information**

Alpine Branch Library
2130 Arnold Way
Alpine, California 91901

Campo-Morena Village
Branch Library
31356 Highway 94
Campo, California 91906

Descanso Branch Library
9545 River Drive
Descanso, California 91916

Pine Valley Branch Library
28804 Old Highway 80
Pine Valley, California
91962

Julian Branch Library
1850 Highway 78
Julian, California 92036

Ramona Branch Library
1275 Main Street
Ramona, California 92065

San Diego Public Library
330 Park Boulevard
San Diego, California
92101