



CLEVELAND NATIONAL FOREST POWER LINE REPLACEMENT PROJECTS



MINOR PROJECT REFINEMENT REQUEST FORM

Date Submitted:	03-07-19	Request #:	028
Date Approval Required:	03-12-19	Landowner:	XXX
APN:	XXX-XXX-XX		
Refinement from (check all that apply):			
<input type="checkbox"/> Mitigation Measure	<input type="checkbox"/> APM	<input checked="" type="checkbox"/> Project Description	<input type="checkbox"/> Drawing <input checked="" type="checkbox"/> Other
Identify source (mitigation measure, project description, etc.):			
<p>Notice to Proceed (NTP) request #15 and Minor Project Refinement (MPR) request #18 for the Cleveland National Forest Power Line Replacement Projects (Project) were approved by the California Public Utilities Commission (CPUC) and United States Forest Service on August 30, 2018. Since the approval of NTP request #15 and MPR request #18, San Diego Gas & Electric Company (SDG&E) has determined that the installation of new underground service at Poles P42735, P222133, and P222132 on Circuit (C) 449 is required in order to complete the Project based on changes to AT&T's revised plan for co-location. A brief description and a justification of the refinements are provided on page 2 of this MPR request.</p>			
Attachments (check all that apply):			
<input checked="" type="checkbox"/> Refinement Request Screening Form (See Attachment A: Minor Project Refinement Request Screening Form)	<input checked="" type="checkbox"/> Maps (See Attachment B: Comparison Map)	<input checked="" type="checkbox"/> Photos (See Attachment C: Photographs)	<input type="checkbox"/> Other
<p>Under Order 2 of the Decision Granting SDG&E Permit to Construct the Cleveland National Forest Power Line Replacement Projects (D.16-05-038), the CPUC may approve minor project refinements under certain circumstances. In accordance with Order 2 of the Decision, respond "yes" or "no" to the following questions (a) through (d).</p>			
<p>(a) Is the proposed refinement outside the geographic boundary of the EIR/EIS study area?</p> <p>The requested refinements are located within the geographic boundary of the Final Environmental Impact Report/Environmental Impact Statement (EIR/EIS) study area, which is depicted in Figure ES-1 Regional Overview Map in the Final EIR/EIS. In addition, the refinement areas occur within the baseline biological, hydrological, and cultural survey areas. Supplemental hydrological, biological, and cultural resources surveys were conducted in 2017 and 2018. Additional details regarding the specific surveys conducted can be found in each applicable resource section in Attachment A: Minor Project Refinement Request Screening Form.</p>	<input type="checkbox"/> Yes	<input checked="" type="checkbox"/> No	
<p>(b) Will the proposed refinement result in a new significant impact or a substantial increase in the severity of a previously identified significant impact based on the criteria used in the EIR/EIS?</p> <p>Discussion of changes in significant impacts due to the requested refinements is based on criteria used in the Final EIR/EIS and is resource area-specific. The changes to each resource area are fully analyzed in Attachment A: Minor Project Refinement Request Screening Form.</p>	<input type="checkbox"/> Yes	<input checked="" type="checkbox"/> No	
<p>(c) Does the proposed refinement conflict with any mitigation measure or applicable law or policy?</p>	<input type="checkbox"/> Yes	<input checked="" type="checkbox"/> No	

(d) Does the proposed refinement trigger an additional permit requirement?		<input type="checkbox"/> Yes	<input checked="" type="checkbox"/> No
Describe refinement being requested (attach drawings and photos as needed):			
As depicted in Attachment B: Comparison Map and Attachment C: Photographs, SDG&E is requesting additional temporary underground workspaces at the existing Poles P42735, P222133, and P222132 to complete the installation of new underground service. Installation of new underground service will require the construction of new trench lines extending from approximately station (STA) 102+68 of the approved underground alignment to Pole P42735; STA 102+00 of the approved alignment to Pole P222133; and STA 101+16 of the approved alignment to Pole P222132. Poles P42735, P222133, and P222132 were all previously approved as removal poles, but need to be changed to pole-top work only poles so they can be used as light poles for the Cottonwood Fire Station and continue to support AT&T facilities. The requested refinements will result in an increase of approximately 0.02 acre of temporary impacts. The activities associated with the installation of the new underground will occur in the same manner as described in the Final EIR/EIS for construction of the Project.			
Provide need for refinement (attach drawings and photos as needed):			
SDG&E is requesting additional temporary underground workspaces for the installation of new underground service in order to complete the Project-based changes in AT&T's revised plan for co-location. The requested refinements will allow for continued support of AT&T's facilities and use of the existing Poles P42735, P222133, and P222132 as light poles for the Cottonwood Fire Station, which are required to complete C449 as currently designed.			
Date refinement is expected to be implemented:		03-13-19	
Resource Agency Coordination			
Resource Agency	Name	Action Required	Date
Documentation (see attached if yes)			
Not Applicable (N/A)	N/A	N/A	N/A
<input type="checkbox"/> Yes	<input type="checkbox"/> No		

ATTACHMENT A: MINOR PROJECT REFINEMENT REQUEST SCREENING FORM

MINOR PROJECT REFINEMENT REQUEST SCREENING FORM

RESOURCE EVALUATION

The requested refinements were evaluated to verify that they will not result in a new significant impact or a substantial increase in the severity of a previously identified significant impact based on the criteria used in the Final Environmental Impact Report/Environmental Impact Statement (EIR/EIS) for the San Diego Gas & Electric Company (SDG&E) Cleveland National Forest Power Line Replacement Projects (Project). The following Final EIR/EIS Consistency Checklist answers the consistency questions for each resource category and includes a description and justification, as necessary. The consistency questions were developed using the California Environmental Quality Act Checklist provided in the Final EIR/EIS. Refer to the Final EIR/EIS for the details on the Project impact evaluation.

Final EIR/EIS Consistency Checklist			
Would the proposed action(s) result in a new impact, or increase the severity of a previously analyzed impact to:	No Change	Potentially Significant Change	Not Applicable
<p>Visual Resources (e.g., adversely affect scenic vistas, damage scenic resources within a state scenic highway, degrade the existing visual character of the site and its surroundings, create sources of light or glare, or result in an inconsistency with applicable scenic integrity objectives)?</p> <p><i>Final EIR/EIS evaluation¹: Significant and unavoidable (Class I)/Adverse and unavoidable</i></p>	<input checked="" type="checkbox"/>	<input type="checkbox"/>	<input type="checkbox"/>
<p>Summary of Proposed Minor Project Refinement Impacts on Visual Resources:</p> <p>Changing the three removal poles to pole-top work only poles will not substantially increase impacts to visual resources because the poles are existing structures associated with the Cottonwood Fire Station. Impacts to the visual character of the area may occur due to additional undergrounding; however, this activity is temporary and will be reduced with implementation of Applicant-Proposed Measure (APM) VIS-01 and APM VIS-02. The requested refinements will be consistent with the visual resource analysis as defined in the Final EIR/EIS, and they will not impact scenic vistas or substantially affect existing views from a County of San Diego Scenic Route (i.e., Buckman Springs Road). Therefore, the requested refinements will not result in a new significant impact or a substantial increase in the severity of a previously analyzed impact to visual resources as identified in the Final EIR/EIS.</p>			
<p>Air Quality (e.g. produce additional emissions, conflict with applicable local air quality plans, or expose sensitive receptors to additional pollutants)?</p> <p><i>Final EIR/EIS evaluation: Significant and unavoidable (Class I)/Adverse and unavoidable</i></p>	<input checked="" type="checkbox"/>	<input type="checkbox"/>	<input type="checkbox"/>
<p>Summary of Proposed Minor Project Refinement Impacts on Air Quality:</p> <p>Activities associated with construction and utilization of the refinement areas (e.g., the type of equipment used and the number of truck trips) will be consistent with those discussed in the Final EIR/EIS and will not increase air emissions beyond what was analyzed. Additional undergrounding may result in a minor increase in air quality impacts for the localized area; however, this activity will be short-term and temporary, and no additional sensitive receptors will be affected. With the implementation of air-related APMs, the requested refinements will not result in a new significant impact or a substantial increase in the severity of a previously analyzed impact to air quality as identified in the Final EIR/EIS.</p>			

¹ The Final EIR/EIS evaluations of impact significance are provided for each resource; this table notes the most significant determination within each resource section identified in the Final EIR/EIS.

Final EIR/EIS Consistency Checklist

Would the proposed action(s) result in a new impact, or increase the severity of a previously analyzed impact to:	No Change	Potentially Significant Change	Not Applicable
<p>Biological Resources (e.g., result in temporary or permanent loss of native vegetation, preserve areas, native wildlife and/or their habitats; cause an adverse effect to jurisdictional waters or sensitive or special-status species; result in the introduction of invasive, non-native, or noxious plant species; conflict with local, regional, or state habitat conservation plan; or interfere with the movement of any resident or migratory wildlife)?</p> <p><i>Final EIR/EIS evaluation: Less than significant with mitigation (Class II)/Adverse</i></p>	☒	☐	☐
<p>Summary of Proposed Minor Project Refinement Impacts on Biological Resources:</p> <p>The requested refinement areas were previously surveyed for sensitive vegetation communities and special-status plant and wildlife species during initial Project surveys. In addition, a supplemental survey of the refinement areas was conducted in 2018 to verify site conditions. No special-status plant or wildlife species or other biological resource issues were identified within or adjacent to the refinement areas that were not previously analyzed in the Final EIR/EIS.</p> <p>The requested refinements will result in an increase of approximately 0.02 acre of temporary impacts to urban and developed/ornamental landscaping.² Temporary impacts of approximately 0.02 acre will occur to United States (U.S.) Fish and Wildlife Service-designated critical habitat and U.S. Forest Service occupied habitat for arroyo toad (<i>Anaxyrus californicus</i>). This species was analyzed in the Final EIR/EIS; and all mitigation measures (MMs) defined in the Project’s Mitigation Monitoring, Compliance, and Reporting Program—as well as other permit and plan conditions—will be implemented as applicable to minimize or mitigate for any additional impacts. Therefore, the requested refinements will not result in a new significant impact or a substantial increase in the severity of a previously analyzed impact to biological resources as identified in the Final EIR/EIS.</p>			
<p>Cultural and Paleontological Resources (e.g., cause an adverse change to Traditional Cultural Properties or historical, archeological, or paleontological resources; or disturb any human remains)?</p> <p><i>Final EIR/EIS evaluation: Less than significant with mitigation (Class II)/Adverse</i></p>	☒	☐	☐
<p>Summary of Proposed Minor Project Refinement Impacts on Cultural and Paleontological Resources:</p> <p>The requested refinement areas were surveyed for cultural resources during initial Project surveys. Supplemental intensive pedestrian surveys were conducted by ASM Affiliates, Inc. in 2017 and in 2018. No new cultural resources were recorded during the supplemental survey, and one previously recorded historic resource (Buckman Springs Road) was identified within 50 feet of the refinement areas. There are no avoidance recommendations for the refinement areas as they will not impact the resource. In addition, the refinements are located within the Project’s area of potential effect, as defined in the Project’s Programmatic Agreement. Therefore, the requested refinements will not result in a new significant impact or a substantial increase in the severity of a previously analyzed impact to cultural resources as defined in the Final EIR/EIS.</p> <p>The requested refinements are underlain by geologic rock units/formations assigned a rank of Potential Fossil Yield Classification (PFYC) Class 1 (very low sensitivity). Because the refinements do not require pole installation underlain by rock units with a PFYC Class 3 (moderate or unknown sensitivity) ranking, additional</p>			

² These impacts fall in the Agricultural/Disturbed/Developed/Bare Ground impact category for SDG&E’s Subregional Natural Community Conservation Plan.

Final EIR/EIS Consistency Checklist			
Would the proposed action(s) result in a new impact, or increase the severity of a previously analyzed impact to:	No Change	Potentially Significant Change	Not Applicable
paleontological monitoring and an update to the Paleontological Monitoring & Treatment Plan will not be required. Therefore, the requested refinements will not result in a new significant impact or a substantial increase in the severity of a previously analyzed impact to paleontological resources as identified in the Final EIR/EIS.			
Greenhouse Gases (e.g., result in a net increase of greenhouse gas emissions, or conflict with an applicable plan, policy, or regulation that reduces greenhouse gas emissions)? <i>Final EIR/EIS evaluation: Less than significant (Class III)/Not adverse</i>	<input checked="" type="checkbox"/>	<input type="checkbox"/>	<input type="checkbox"/>
Summary of Proposed Minor Project Refinement Impacts on Greenhouses Gases: Activities associated with utilization of the requested refinement areas are consistent with the greenhouse gas (GHG) analysis in the Final EIR/EIS. Although additional undergrounding will occur, the requested refinements will not trigger an exceedance of the GHG threshold of 10,000 metric tons of carbon dioxide equivalent per year or an exceedance of the County of San Diego Climate Action Plan criteria for annual grading and land clearing due to the small change in acreage. Therefore, the requested refinements will not result in a new significant impact or a substantial increase in the severity of a previously analyzed impact to GHG emissions as identified in the Final EIR/EIS.			
Public Health and Safety (e.g., result in a significant hazard to the public or the environment through the transport, use, or disposal of hazardous materials; emit hazardous waste within one-quarter mile of a school; be located on a hazardous materials site; result in a safety hazard for people residing or working in the Project area; interfere with an adopted emergency plan; or create safety hazards due to structural failure)? <i>Final EIR/EIS evaluation: Less than significant with mitigation (Class II)/Adverse</i>	<input checked="" type="checkbox"/>	<input type="checkbox"/>	<input type="checkbox"/>
Summary of Proposed Minor Project Refinement Impacts on Public Health and Safety: The requested refinements occur within the area assessed in the <i>Report on ASTM Phase I Environmental Site Assessment Cleveland National Forest Electric Safety and Reliability Project San Diego County, California</i> . No known hazardous materials sites are located in the requested refinement areas. Therefore, the requested refinements will not result in a new significant impact or a substantial increase in the severity of a previously analyzed impact to public health and safety as identified in the Final EIR/EIS.			

Final EIR/EIS Consistency Checklist

Would the proposed action(s) result in a new impact, or increase the severity of a previously analyzed impact to:	No Change	Potentially Significant Change	Not Applicable
<p>Fire and Fuels Management (e.g., increase the probability of a wildfire, reduce the effectiveness of firefighting, or introduce non-native plants that would contribute to ignition potential)?</p> <p><i>Final EIR/EIS evaluation: Less than significant with mitigation (Class II)/Adverse</i></p>	☒	☐	☐
<p>Summary of Proposed Minor Project Refinement Impacts on Fire and Fuels Management:</p> <p>The requested refinements will be located within the High Fire Hazard Severity Zone, which is consistent with the Fire and Fuels Management analysis in the Final EIR/EIS. The potential risk of wildfire ignition and spread associated with the refinement areas will be managed in compliance with the Project’s Construction Fire Prevention/Protection Plan. Therefore, the requested refinements will not result in a new significant impact or a substantial increase in the severity of a previously analyzed impact to fire and fuels management as identified in the Final EIR/EIS.</p>			
<p>Hydrology and Water Quality (e.g., result in increased levels of turbidity, introduce contaminants, deplete groundwater supplies, or degrade water quality)?</p> <p><i>Final EIR/EIS evaluation: Significant and unavoidable (Class I)/Adverse and unavoidable</i></p>	☒	☐	☐
<p>Summary of Proposed Minor Project Refinement Impacts on Hydrology and Water Quality:</p> <p>The requested refinement areas were surveyed for the presence of waters of the state and/or the U.S. (i.e., jurisdictional wetlands or non-wetland waters) during initial Project surveys. In addition, a supplemental survey of the refinement areas was conducted in 2018 to verify site conditions. The refinement areas do not contain any waters of the state or U.S. To minimize potential impacts from erosion and off-site sedimentation during construction, the refinement areas will be incorporated into a Change of Information (COI) to the Storm Water Pollution Prevention Plan for Circuit (C) 440, C442, C449, Transmission Line (TL) 629C, and TL6958 (Waste Discharge Identification #9 37C381630). The COI will be submitted to the State Water Resources Control Board’s Stormwater Multiple Applications and Report Tracking System. Therefore, the requested refinements will not result in a new significant impact or a substantial increase in the severity of a previously analyzed impact to hydrology and water quality as identified in the Final EIR/EIS.</p>			
<p>Land Use (e.g., disturb land uses at or near the Project components, divide an established community, or conflict with a land use plan, policy, or regulation of an agency with jurisdiction over the Project)?</p> <p><i>Final EIR/EIS evaluation: Significant and unavoidable (Class I)/Adverse and unavoidable</i></p>	☒	☐	☐
<p>Summary of Proposed Minor Project Refinement Impacts on Land Use:</p> <p>In accordance with the Construction Notification Plan and MM LU-1, property owners within 1,000 feet of C449 were notified of construction activities on August 28, 2018, and the property owners within 1,000 feet of the requested refinements were included in that notification process. The requested refinements will not introduce a new land use, establish a permanent barrier or obstacle between uses, or create a physical division or separation of use. In addition, the requested refinements will not conflict with the applicable land use plans, policies, or regulations of an agency with jurisdiction over the Project, as they are located in the same County of San Diego land use and zoning designations and Cleveland National Forest Land Management Plan land use zone that were analyzed in the Final EIR/EIS. Therefore, the requested refinements will not result in new significant impacts or a substantial increase in the severity of a previously analyzed impact to land use as identified in the Final EIR/EIS.</p>			

Final EIR/EIS Consistency Checklist

Would the proposed action(s) result in a new impact, or increase the severity of a previously analyzed impact to:	No Change	Potentially Significant Change	Not Applicable
<p>Noise (e.g., disturb sensitive receptors and violate local rules, standards, and/or ordinances; or cause ground borne vibration)? <i>Final EIR/EIS evaluation: Less than significant with mitigation (Class II)/Adverse</i></p>	☒	☐	☐
<p>Summary of Proposed Minor Project Refinement Impacts on Noise: Additional construction-related noise will be generated within the requested refinement areas due to undergrounding and large equipment operation. Use of the refinement areas may result in temporary increases in noise levels for the localized area; however, the activities within the refinement areas will be short-term and temporary, and no additional sensitive receptors will be affected. With implementation of noise-related MMs and APMs, the requested refinements will not result in a new significant impact or a substantial increase in the severity of a previously analyzed impact to noise as identified in the Final EIR/EIS.</p>			
<p>Public Services and Utilities (e.g., result in construction of new, or expansion of existing, facilities for fire protection, municipal water supplies, telecommunications, and solid waste; or disrupt electric service)? <i>Final EIR/EIS evaluation: Less than significant with mitigation (Class II)/Adverse</i></p>	☒	☐	☐
<p>Summary of Proposed Minor Project Refinement Impacts on Public Services and Utilities: The requested refinements will be consistent with the public services and utilities analysis in the Final EIR/EIS, and will not require new or expanded facilities or services. Therefore, the requested refinements will not result in a new significant impact or a substantial increase in the severity of a previously analyzed impact to public services and utilities as identified in the Final EIR/EIS.</p>			
<p>Recreation (e.g., reduce access and visitation to recreation areas, preclude recreational activities, or result in increased, unauthorized access to specially designated or restricted areas)? <i>Final EIR/EIS evaluation: Less than significant with mitigation (Class II)/Adverse</i></p>	☒	☐	☐
<p>Summary of Proposed Minor Project Refinement Impacts on Recreation: Like NTP request #15, the requested refinement areas will be located near the Pacific Crest National Scenic Trail and the proposed Buckman Springs Road Pathway. Use of the refinement areas will not reduce or preclude access or visitation to these recreational areas, or increase the possibility of unauthorized access to specially designated or restricted areas. Therefore, the requested refinements will not result in a new significant impact or a substantial increase in the severity of a previously analyzed impact to recreation as identified in the Final EIR/EIS.</p>			

Final EIR/EIS Consistency Checklist

Would the proposed action(s) result in a new impact, or increase the severity of a previously analyzed impact to:	No Change	Potentially Significant Change	Not Applicable
<p>Transportation and Traffic (e.g., conflict with an applicable congestion management program or a plan, ordinance, or policy associated with the circulation system or alternative transportation; increase hazards due to a design feature; or result in inadequate emergency access)?</p> <p><i>Final EIR/EIS evaluation: Less than significant with mitigation (Class II)/Adverse</i></p>	☒	☐	☐
<p>Summary of Proposed Minor Project Refinement Impacts on Transportation and Traffic:</p> <p>The requested refinements will not require additional or different types of construction vehicles and equipment than those discussed in the Final EIR/EIS for construction of the approved Project. In addition, the total number of truck trips associated with construction of the Project will not change, and the refinements will affect the same roadways analyzed in the Final EIR/EIS (e.g., Buckman Springs Road). With the implementation of APM TRANS-01 through APM TRANS-05, potential temporary impacts to the existing levels of service (LOS)³ will be adequately addressed. Therefore, the requested refinements will not result in a new significant impact or a substantial increase in the severity of a previously analyzed impact to transportation and traffic as identified in the Final EIR/EIS.</p>			

³ Buckman Springs Road has an LOS of A through C.

ATTACHMENT B: COMPARISON MAP

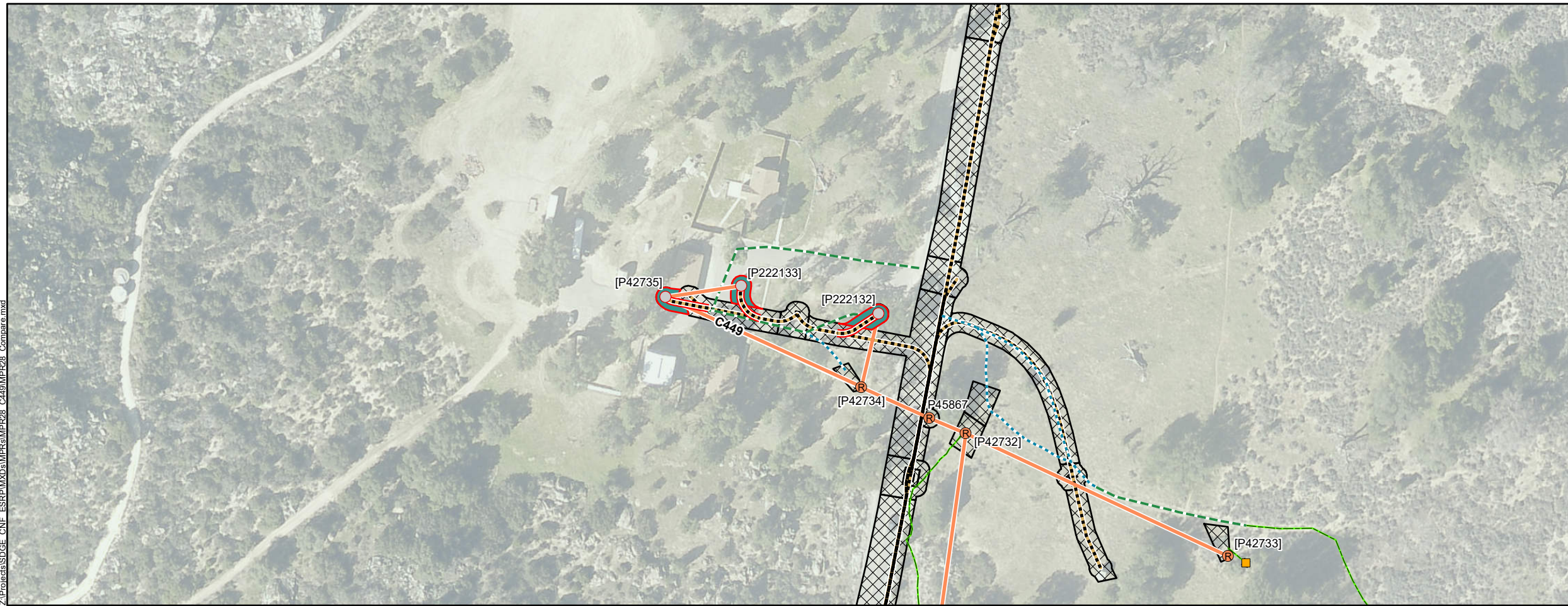
**Attachment B:
Comparison Map
C449 Map 1 of 1**

**Cleveland National Forest
Power Line Replacement Projects**

- Approved Design**
- Removal
 - Remove From Service Anchor
 - Handhole
 - Meter
 - Transformer
 - Utility Box
 - Pad
 - Anchor Work Area
 - Stringing Site
 - Temporary Pole Work Area
 - Underground Work Limits
 - Construction-Only Access Road
 - Footpath
 - Navigation Access Road
 - New Underground
 - Removal
- U.S. Forest Service



- Final Design**
- NTP #15/MPR #18**
- Removal
 - Remove From Service Anchor
 - Work Area
 - Construction-Only Access Road
 - Footpath
 - Navigation Access Road
 - New Underground
 - Removal
- MPR #28**
- Pole Top Work Only
 - Underground Work Limits
 - New Underground
- U.S. Forest Service



1:1,500

0 100 200 Feet

ATTACHMENT C: PHOTOGRAPHS



Cleveland National Forest Power Line Replacement Projects
Minor Project Refinement Request #28
Attachment C: Photographs



Photograph 1:
West-facing view of the existing conditions at the requested temporary underground workspace at Pole P42735.



Photograph 2:
North-facing view of the existing conditions at the requested temporary underground workspace at Pole P222133.



Photograph 3:
East-facing view of
the existing
conditions at the
requested
temporary
underground
workspace at Pole
P222132.