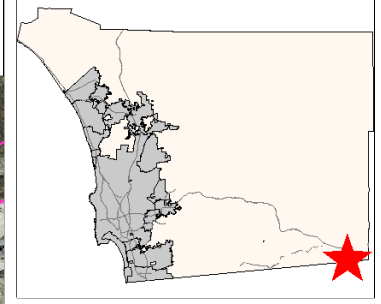
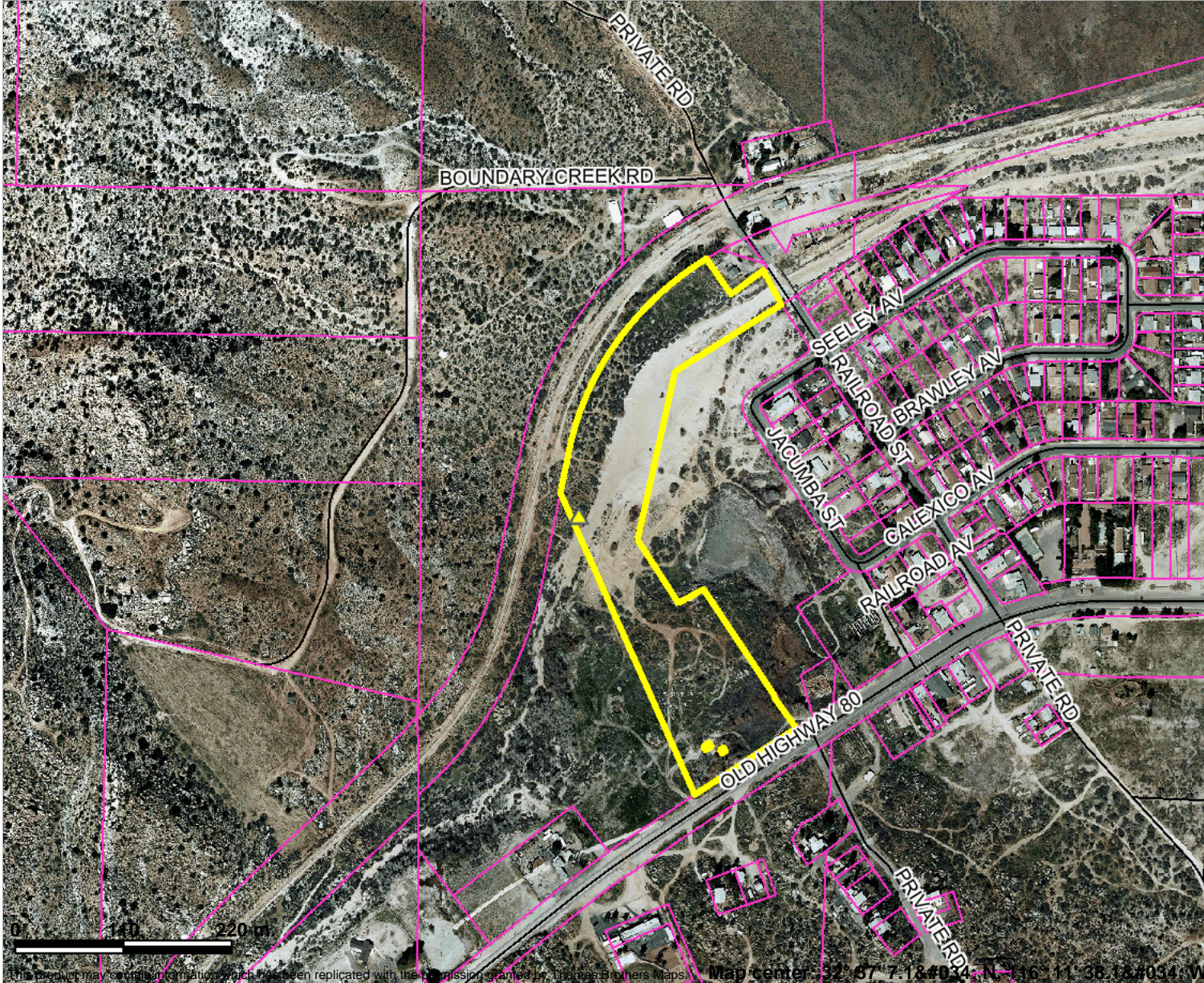


# P10-014 2009 Orthophotos



## Legend

- Parcels with out labels
- Streets
- Water Bodies
- County Boundary2



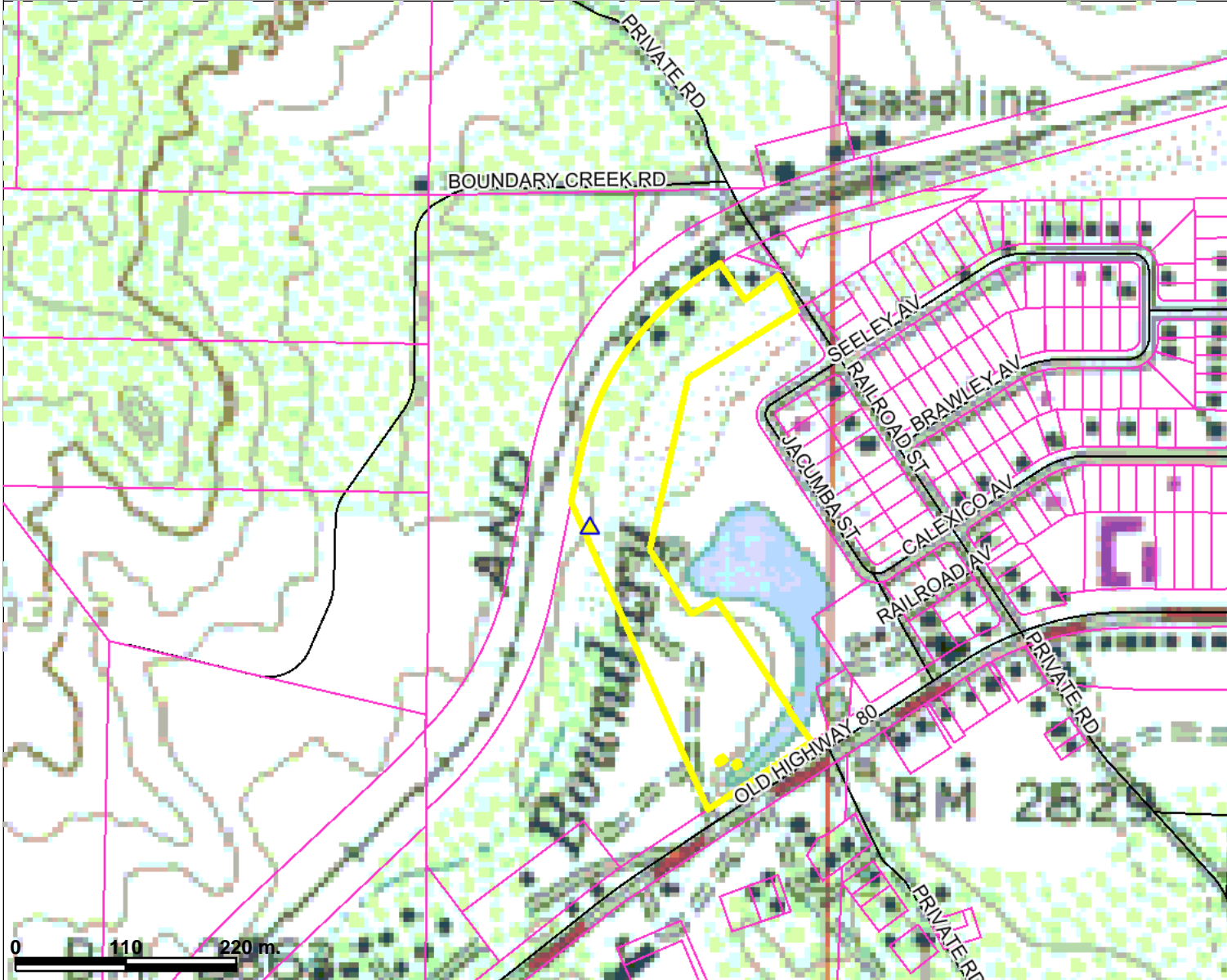
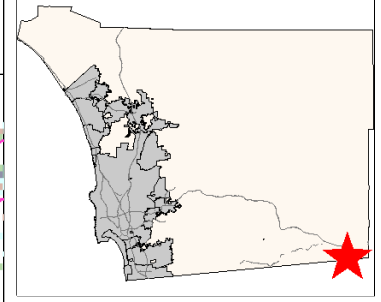
Scale: 1:6,159

This product may contain information which has been replicated with the permission granted by Thomas Brothers Maps. Map center: 32° 57' 7.18\"/>

THIS MAP/DATA IS PROVIDED WITHOUT WARRANTY OF ANY KIND, EITHER EXPRESS OR IMPLIED, INCLUDING BUT NOT LIMITED TO THE IMPLIED WARRANTIES OF MERCHANTABILITY AND FITNESS FOR A PARTICULAR PURPOSE. This product may contain information from the SANDAG Regional Information System which cannot be reproduced without the written permission of SANDAG.



# P10-014 USGS 7.5 Min Topo Quads



- ### Legend
- Parcels with out labels
  - Streets
  - Water Bodies
  - County Boundary2



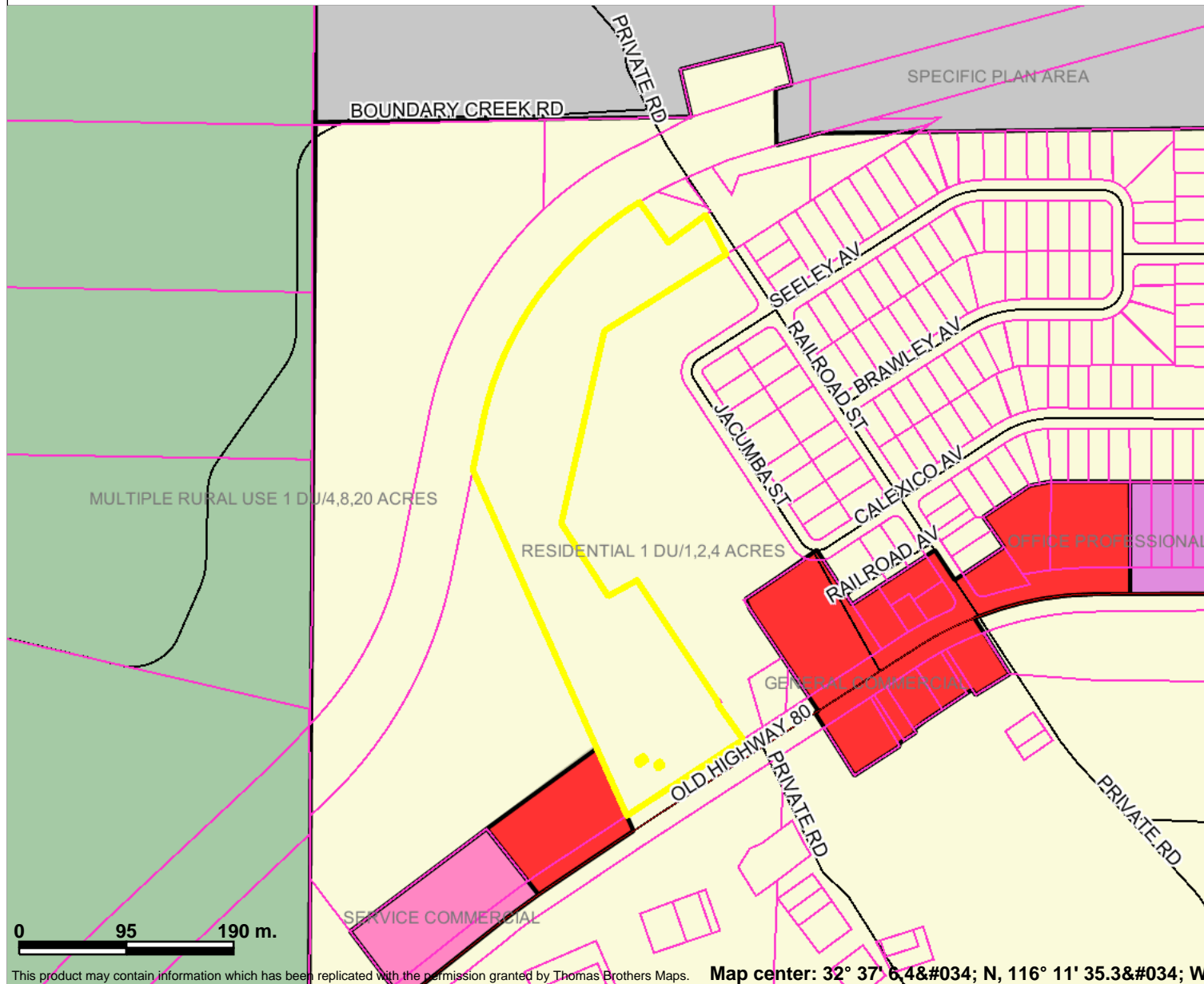
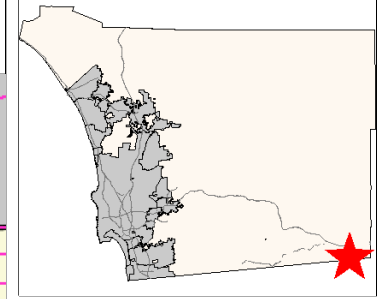
This product may contain information which has been replicated with the permission granted by Thomas Brothers Maps. **Map center: 32° 37' 7.18" N, 116° 11' 38.18" W**

Scale: 1:6,159

THIS MAP/DATA IS PROVIDED WITHOUT WARRANTY OF ANY KIND, EITHER EXPRESS OR IMPLIED, INCLUDING BUT NOT LIMITED TO THE IMPLIED WARRANTIES OF MERCHANTABILITY AND FITNESS FOR A PARTICULAR PURPOSE. This product may contain information from the SANDAG Regional Information System which cannot be reproduced without the written permission of SANDAG.



# P10-014 General Plan (Existing)



### Legend

- Parcels with out labels
- Highways
- Freeways
- Streets
- Water Bodies**
- Water Bodies
- General Plan (Existing)**
- Residential 1 DU/1,2,4 Acres
- Residential 1 DU/Acre
- Residential 2 DU/Acre
- Residential 2.9 DU/Acre
- Residential 4.3 DU/Acre
- Residential 7.3 DU/Acre
- Residential 10.9 DU/Acre
- Residential 14.5 DU/Acre
- Residential 24 DU/Acre
- Residential 43 DU/Acre
- Office Professional
- Neighborhood Professional
- General Commercial
- Service Commercial
- Visitor Serving Commercial
- Limited Impact Industrial
- Fallbrook Village Mixed Use
- General Impact Industrial
- Estate Residential 1 DU/2,4 Acres
- Multiple Rural Use 1 DU/4,8,20 Acres
- Intensive Ag. 1DU/ 4,8 Acres
- General Agriculture
- Specific Plan Area
- Public/Semi-Public Lands
- National Forest and State Parks
- Impact Sensitive 1DU/20 Acres
- Extractive
- Telecommunications
- Indian Reservation

0 95 190 m.

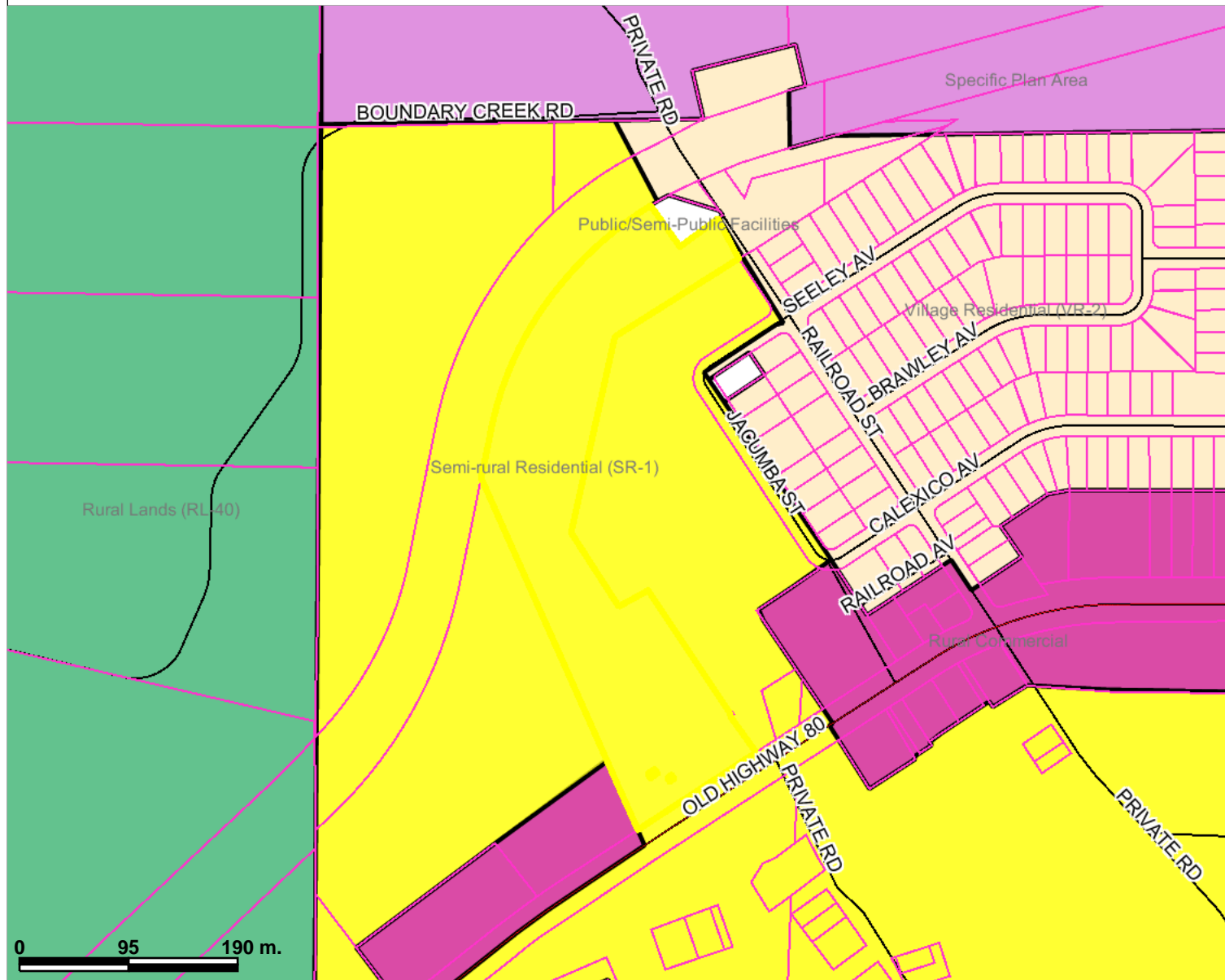
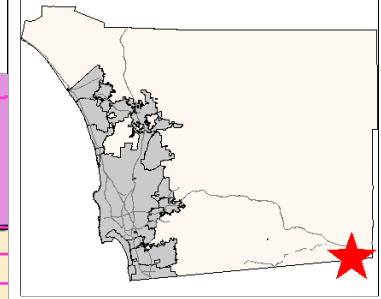
This product may contain information which has been replicated with the permission granted by Thomas Brothers Maps. **Map center: 32° 37' 6.48" N, 116° 11' 35.38" W**

Scale: 1:5,356

THIS MAP/DATA IS PROVIDED WITHOUT WARRANTY OF ANY KIND, EITHER EXPRESS OR IMPLIED, INCLUDING BUT NOT LIMITED TO THE IMPLIED WARRANTIES OF MERCHANTABILITY AND FITNESS FOR A PARTICULAR PURPOSE. This product may contain information from the SANDAG Regional Information System which cannot be reproduced without the written permission of SANDAG.



# P10-014 GP Update - PC Recommendation 2010



## Legend

- Parcels with out labels
- Highways
- Freeways
- Streets
- Water Bodies**
- Water Bodies
- GP Update - PC Recommendation 2010**
- Village Residential (VR-30)
- Village Residential (VR-24)
- Village Residential (VR-14.5)
- Village Residential (VR-10.9)
- Village Residential (VR-7.3)
- Village Residential (VR-4.3)
- Village Residential (VR-2.9)
- Village Residential (VR-2)
- Semi-Rural Residential (SR-1)
- Semi-Rural Residential (SR-2)
- Semi-Rural Residential (SR-4)
- Semi-Rural Residential (SR-10)
- Rural Lands (RL-20)
- Rural Lands (RL-40)
- Rural Lands (RL-80)
- Specific Plan Area
- Office Professional
- Neighborhood Commercial
- General Commercial
- Service Commercial
- Rural Commercial
- Limited Impact Industrial
- Medium Impact Industrial
- High Impact Industrial
- Village Core Mixed Use
- Public/Semi-Public Lands
- National Forest and State Parks



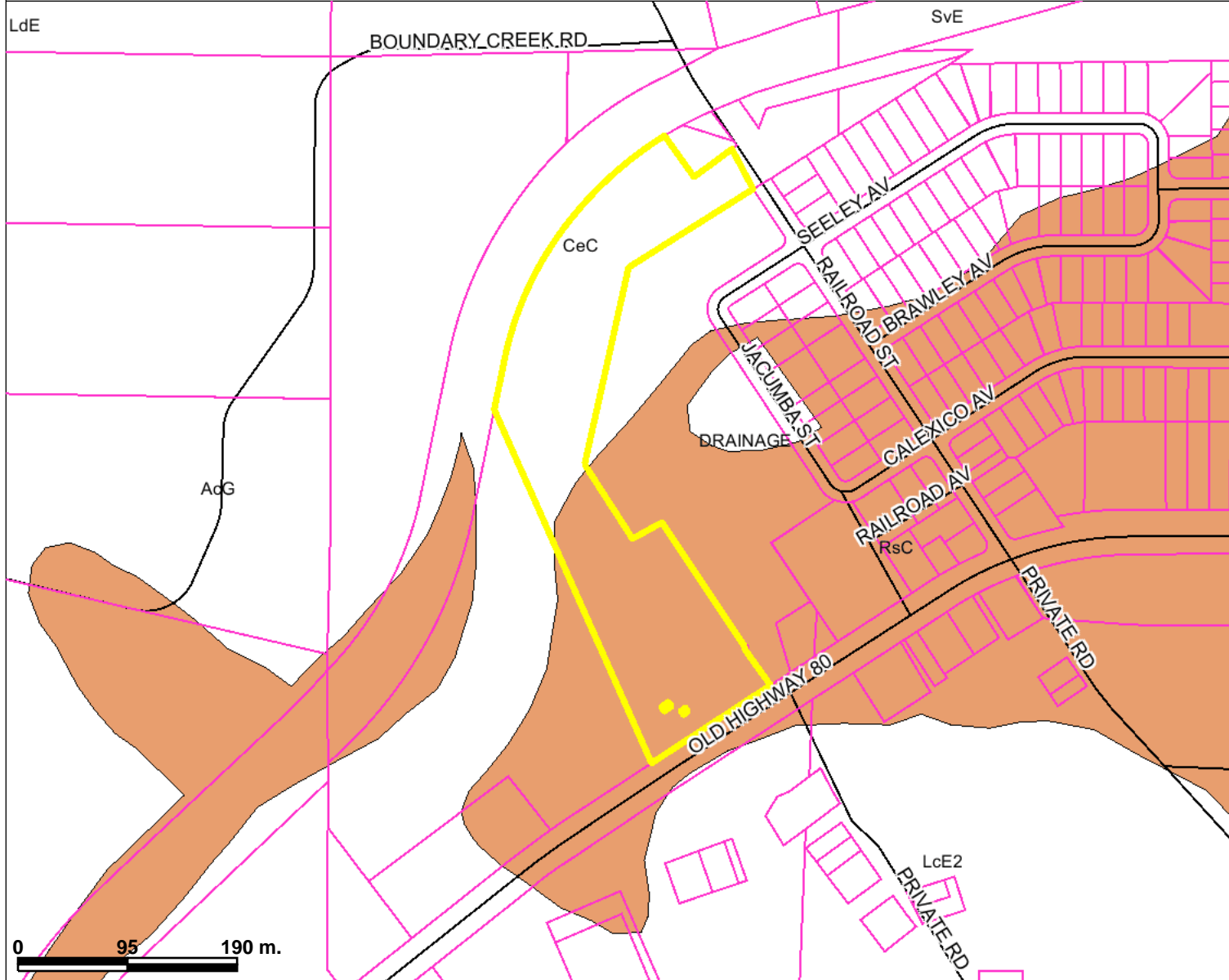
Scale: 1:5,356

This product may contain information which has been replicated with the permission granted by Thomas Brothers Maps. Map center: 32° 37' 6.48" N, 116° 11' 35.38" W

THIS MAP/DATA IS PROVIDED WITHOUT WARRANTY OF ANY KIND, EITHER EXPRESS OR IMPLIED, INCLUDING BUT NOT LIMITED TO THE IMPLIED WARRANTIES OF MERCHANTABILITY AND FITNESS FOR A PARTICULAR PURPOSE. This product may contain information from the SANDAG Regional Information System which cannot be reproduced without the written permission of SANDAG.



# P10-014 FMMP Soil Candidates



## Legend

- Parcels with out labels
- Streets
- Water Bodies
- Soils
- Statewide Significance Soils
- Prime Farmland Soils
- Other
- County Boundary2



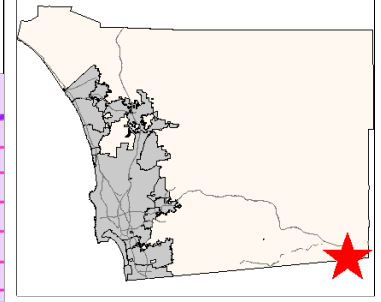
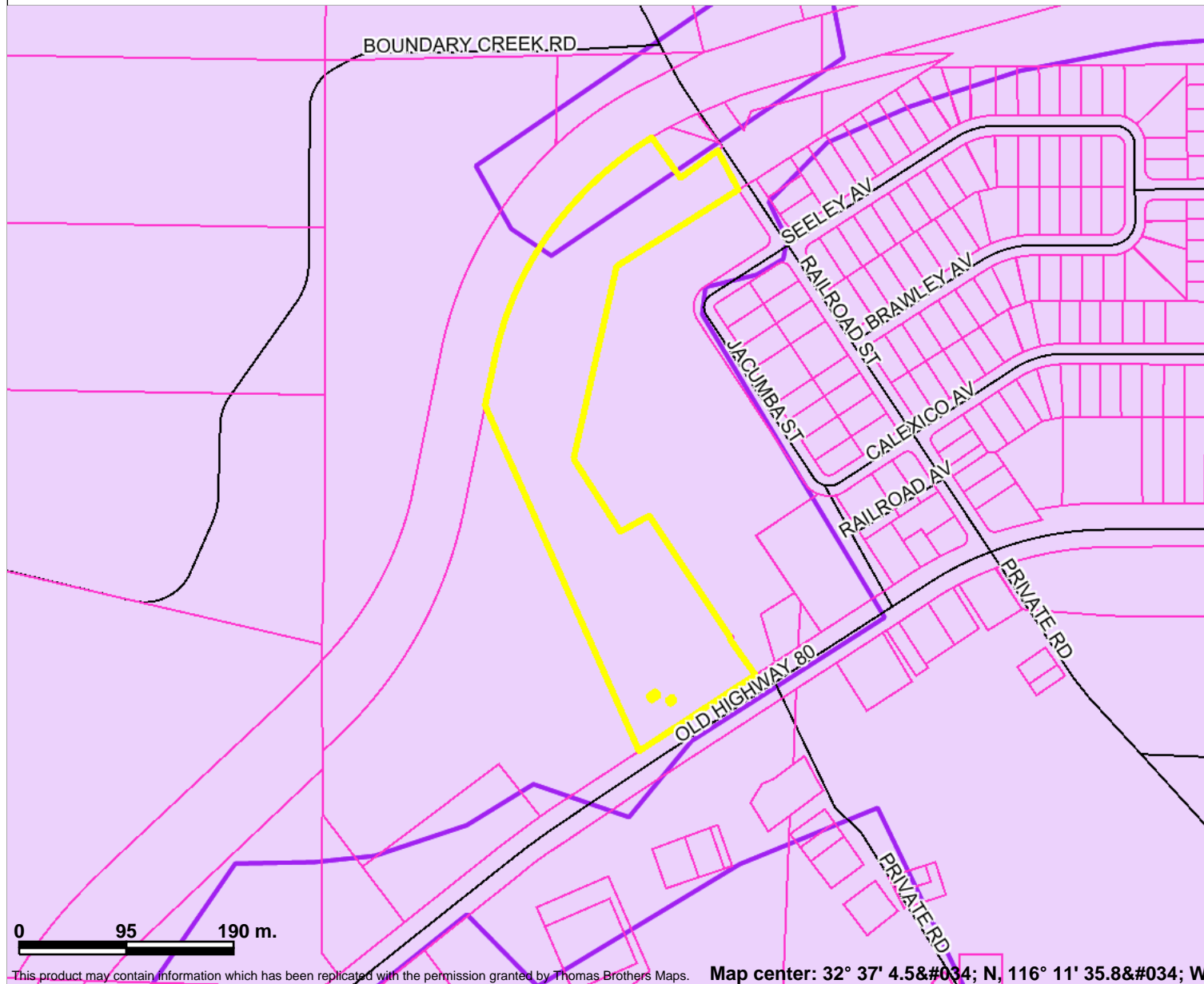
Scale: 1:5,356

This product may contain information which has been replicated with the permission granted by Thomas Brothers Maps. Map center: 32° 37' 4.5&#034; N, 116° 11' 35.8&#034; W

THIS MAP/DATA IS PROVIDED WITHOUT WARRANTY OF ANY KIND, EITHER EXPRESS OR IMPLIED, INCLUDING BUT NOT LIMITED TO THE IMPLIED WARRANTIES OF MERCHANTABILITY AND FITNESS FOR A PARTICULAR PURPOSE. This product may contain information from the SANDAG Regional Information System which cannot be reproduced without the written permission of SANDAG.



# P10-014 DWR Land Use(1998)



## Legend

- Parcels with out labels
- Streets
- Water Bodies
- Water Bodies
- DWR Land Use(1998)
- County Boundary2



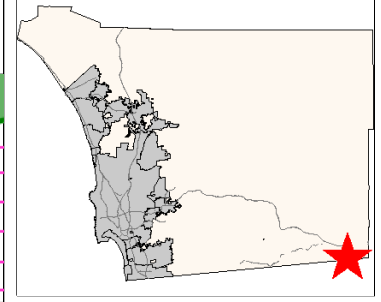
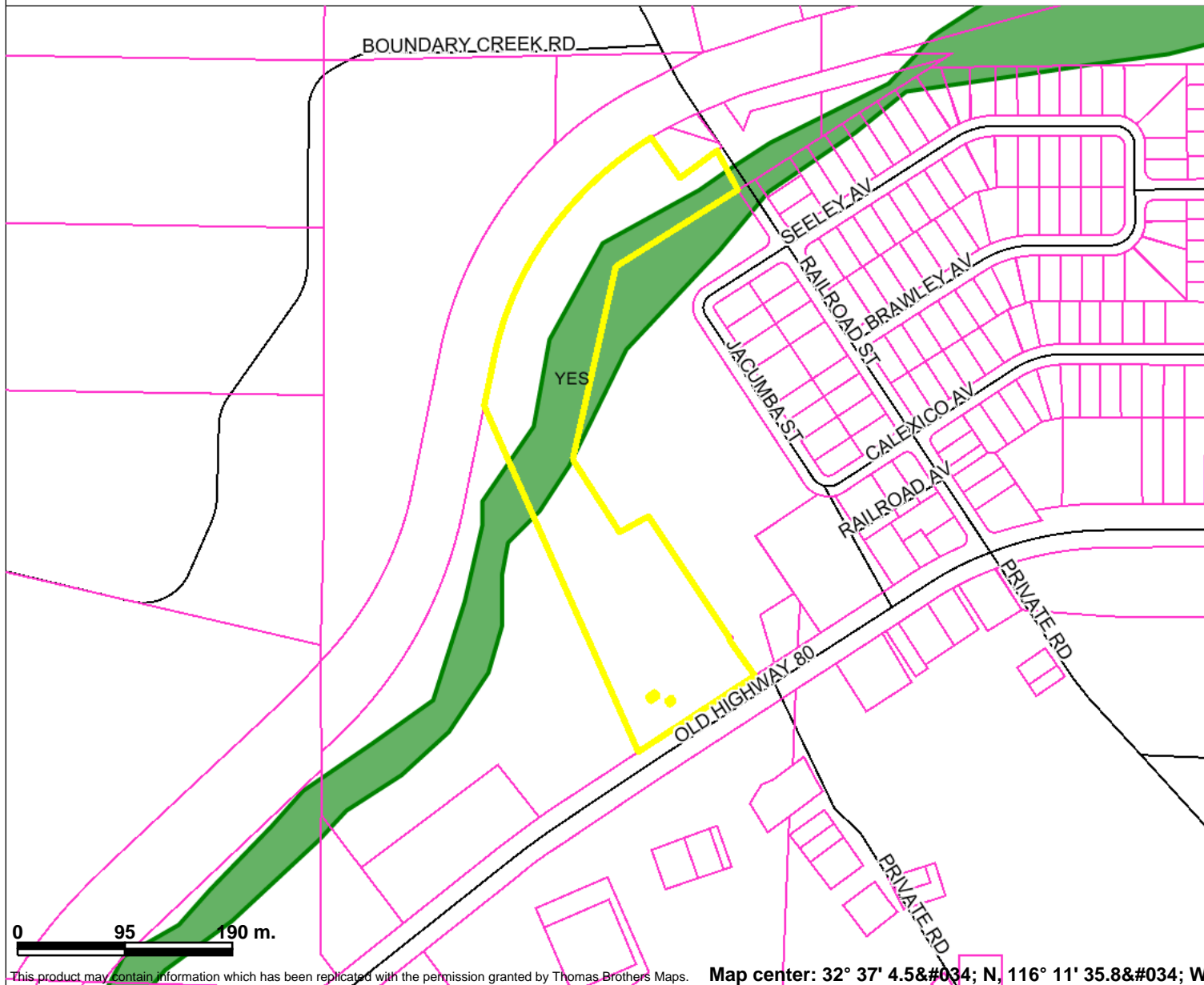
Scale: 1:5,356

This product may contain information which has been replicated with the permission granted by Thomas Brothers Maps. Map center: 32° 37' 4.58" N, 116° 11' 35.88" W

THIS MAP/DATA IS PROVIDED WITHOUT WARRANTY OF ANY KIND, EITHER EXPRESS OR IMPLIED, INCLUDING BUT NOT LIMITED TO THE IMPLIED WARRANTIES OF MERCHANTABILITY AND FITNESS FOR A PARTICULAR PURPOSE. This product may contain information from the SANDAG Regional Information System which cannot be reproduced without the written permission of SANDAG.



# P10-014 Wetlands



**Legend**

- Parcels with out labels
- Streets
- Water Bodies
- Water Bodies
- Wetlands (RPO def.)
- County Boundary2

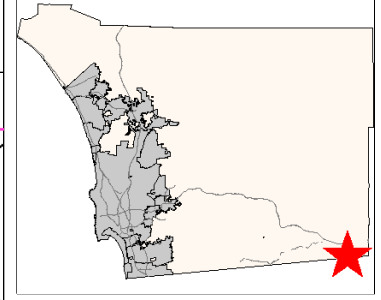
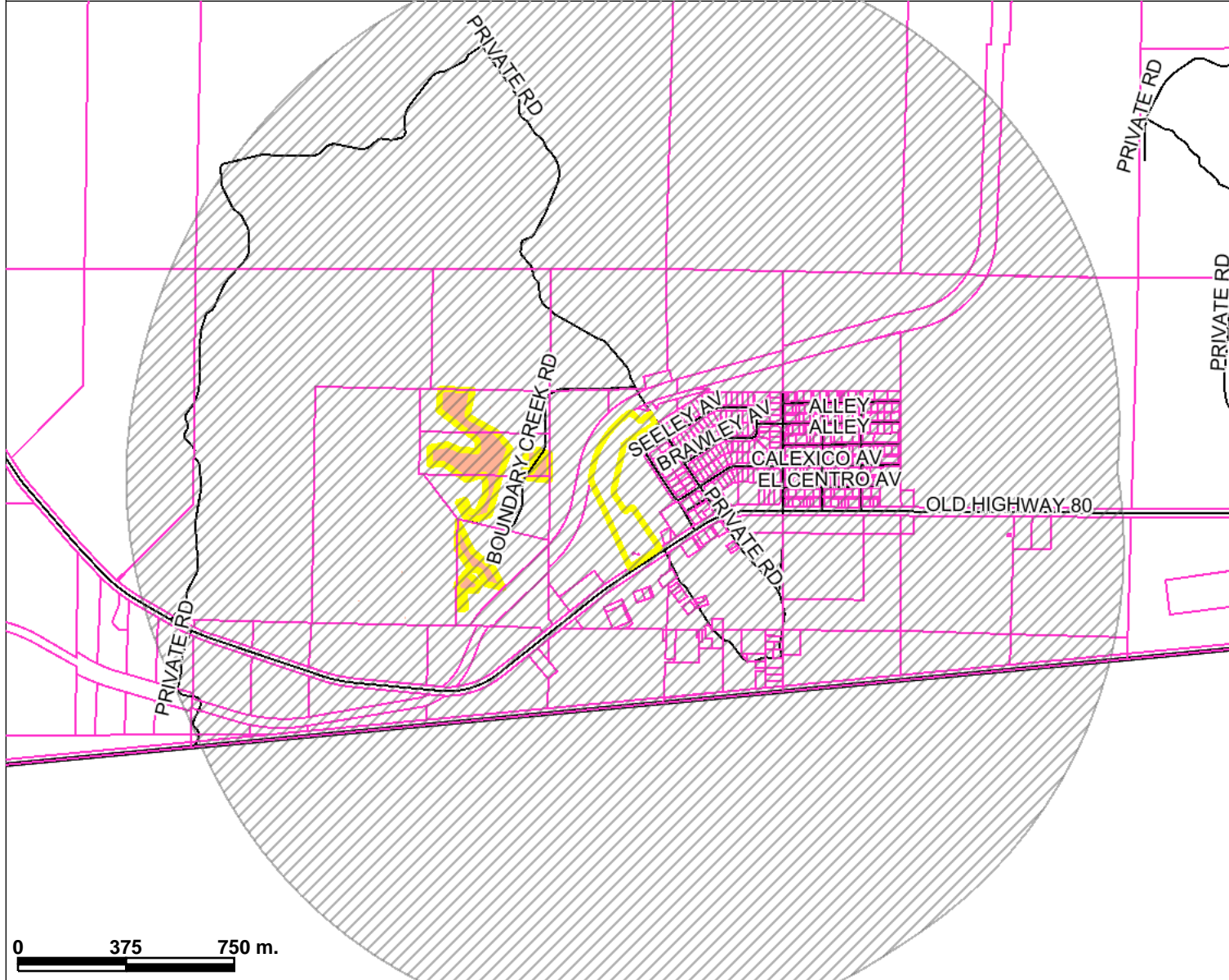
Scale: 1:5,356

This product may contain information which has been replicated with the permission granted by Thomas Brothers Maps. Map center: 32° 37' 4.58" N, 116° 11' 35.88" W

THIS MAP/DATA IS PROVIDED WITHOUT WARRANTY OF ANY KIND, EITHER EXPRESS OR IMPLIED, INCLUDING BUT NOT LIMITED TO THE IMPLIED WARRANTIES OF MERCHANTABILITY AND FITNESS FOR A PARTICULAR PURPOSE. This product may contain information from the SANDAG Regional Information System which cannot be reproduced without the written permission of SANDAG.

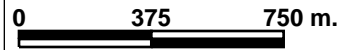


# P10-014 Biological & Openspace Easements



## Legend

- Parcels with out labels
- Streets
- Water Bodies
- Biological Open Space Easements
- County Boundary2



Map center: 32° 37' 5" N, 116° 11' 36" W



Scale: 1:21,424

THIS MAP/DATA IS PROVIDED WITHOUT WARRANTY OF ANY KIND, EITHER EXPRESS OR IMPLIED, INCLUDING BUT NOT LIMITED TO THE IMPLIED WARRANTIES OF MERCHANTABILITY AND FITNESS FOR A PARTICULAR PURPOSE. This product may contain information from the SANDAG Regional Information System which cannot be reproduced without the written permission of SANDAG.



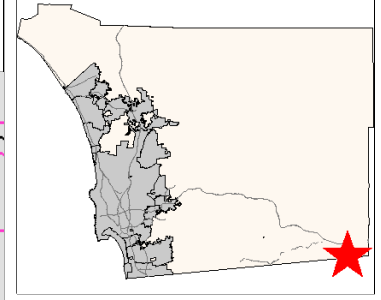
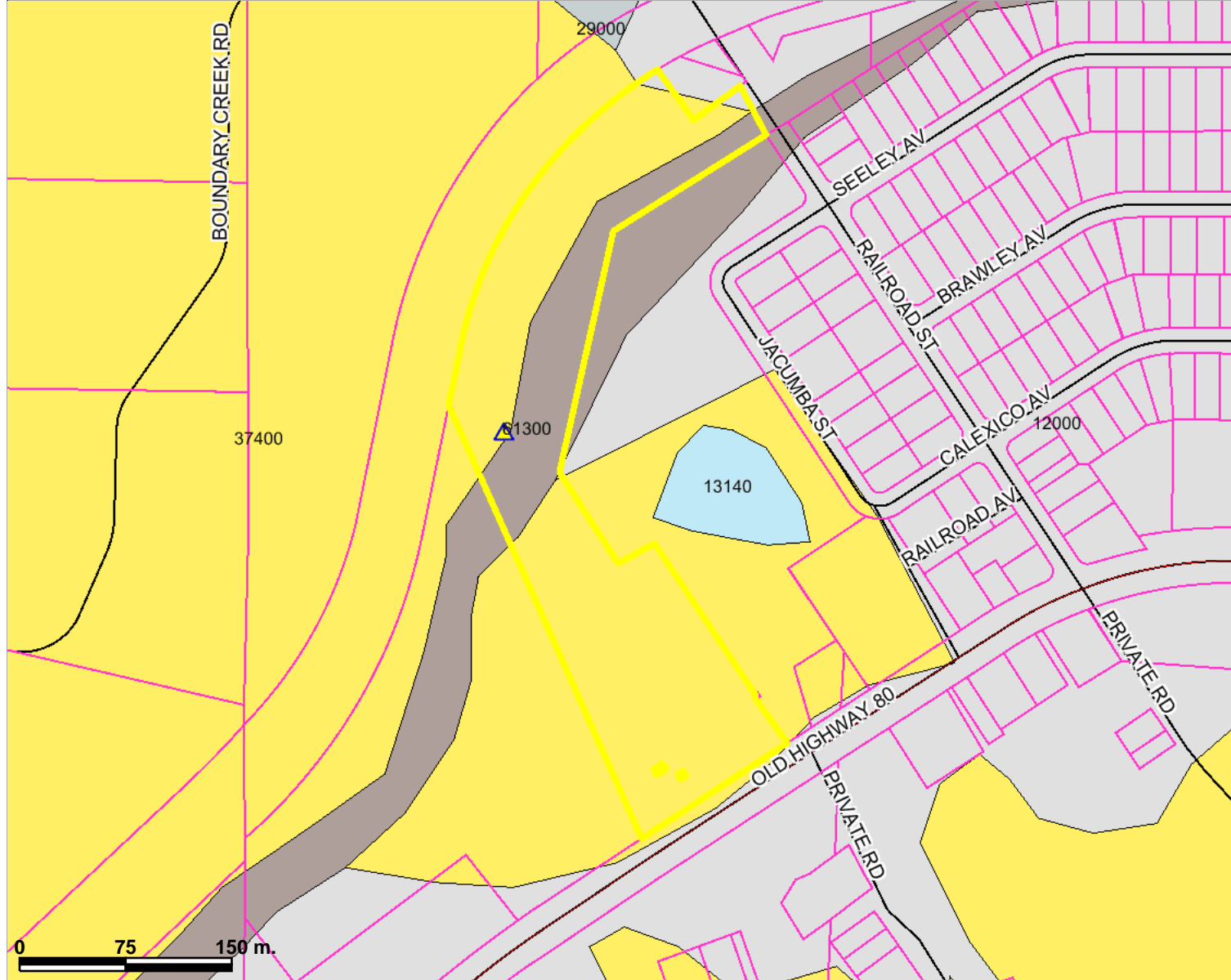
This product may contain information which has been replicated with the permission granted by Thomas Brothers Maps.



### Biological & Openspace Easements

EASEID	POSTID	POSTDATE	TYPE	JURISDIC	SUBDIVID	DOCYR	DOCNO	Recorded Date	SUB_TYPE	PENDING	DRAWING	SHAPE.AREA	SHAPE.LEN
28666	DPWRLP	1999-01-22 15:45:01	OS	CN	15754				1			314.0186986	62.82510842
28665	DPWRLP	1999-01-22 15:43:09	OS	CN	15754				1			314.0238622	62.82571958
28659	DPWRLP	1999-01-22 13:30:33	OS	CN	15754				1			48934.43281	976.0404264
28660	DPWRLP	1999-01-22 13:30:43	OS	CN	15754				1			546572.0795	5705.992063
28662	DPWRLP	1999-01-22 13:30:58	OS	CN	15754				1			46896.43633	1163.755591
28661	DPWRLP	1999-01-22 13:30:52	OS	CN	15754				1			110088.8979	2020.651427
28664	DPWRLP	1999-01-22 15:30:35	OS	CN	15754				1			314.0040876	62.82376316
28667	DPWRLP	1999-01-22 15:46:51	OS	CN	15754				1			314.0223903	62.82550905
28663	DPWRLP	1999-01-22 15:10:39	OS	CN	15754				1			26729.81083	821.9163318

# P10-014 Vegetation



## Legend

- Parcels with out labels
- Highways
- Freeways
- Streets
- Water Bodies**
- Water Bodies
- Aggregated Regional Vegetation**
- Southern Foredunes, Beach, Saltpan, Mudflats
- Sage Scrub (Coastal)
- Chaparral
- Grasslands
- Riparian Scrub
- Riparian Woodland
- Riparian Forest
- Pinyon Juniper Woodlands
- Other Woodlands
- Oak Forest
- Meadow and Seep
- Marsh
- Coniferous Forest
- Desert Dunes
- Playas/Badlands/Mudhill Forbs
- Desert Scrub
- Desert Chaparral
- Dry Wash Woodland
- Water
- Urban, Unvegetated, Disturbed Habitat, Agriculture, Eucalyptus Woodland
- Other
- County Boundary2



Map center: 32° 37' 4.98" N, 116° 11' 35.38" W



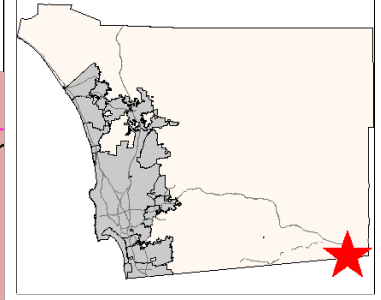
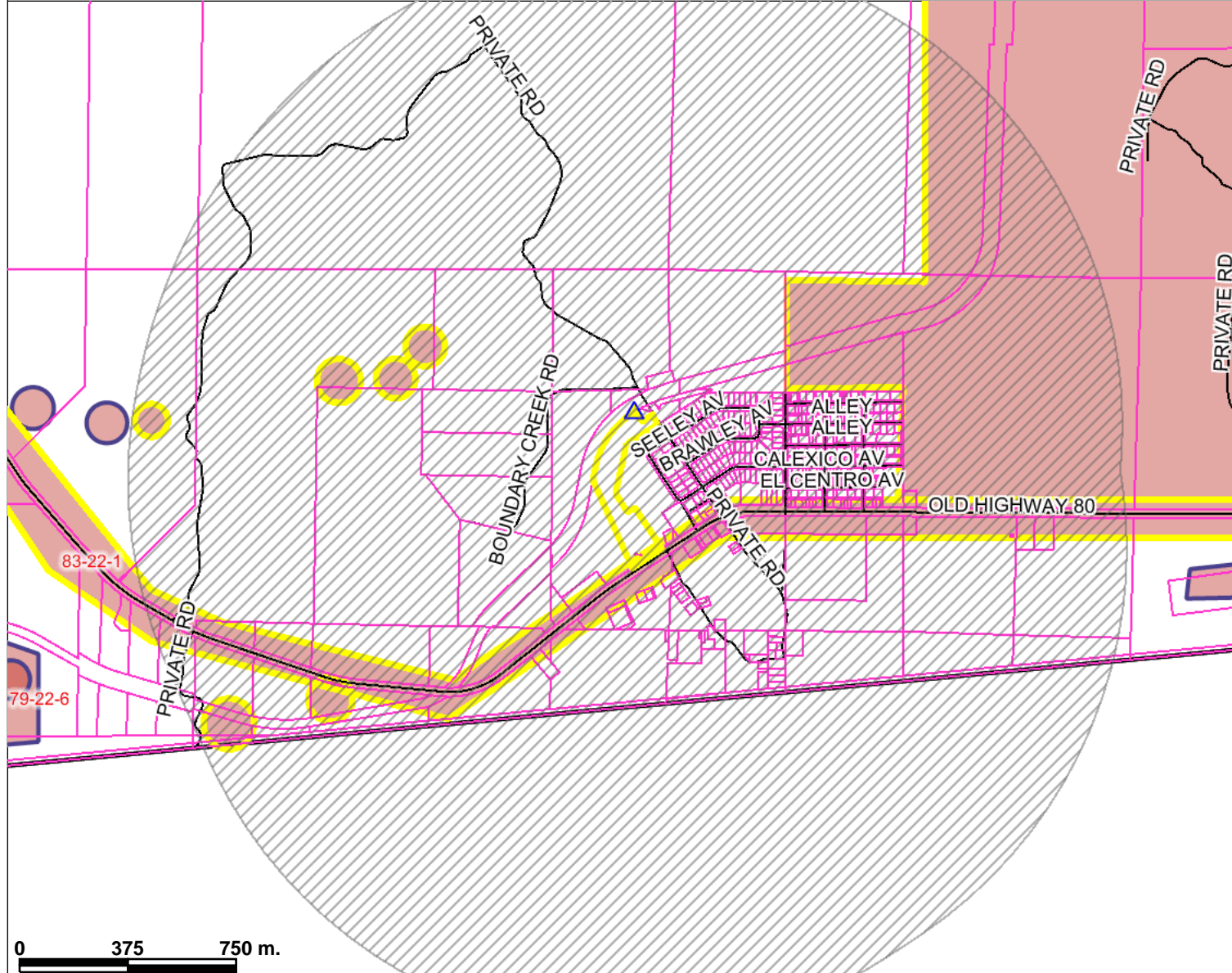
Scale: 1:4,370

This product may contain information which has been replicated with the permission granted by Thomas Brothers Maps.

THIS MAP/DATA IS PROVIDED WITHOUT WARRANTY OF ANY KIND, EITHER EXPRESS OR IMPLIED, INCLUDING BUT NOT LIMITED TO THE IMPLIED WARRANTIES OF MERCHANTABILITY AND FITNESS FOR A PARTICULAR PURPOSE. This product may contain information from the SANDAG Regional Information System which cannot be reproduced without the written permission of SANDAG.

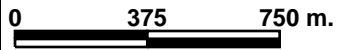


# P10-014 Arch-Bio



## Legend

- Parcels with out labels
- ~ Streets
- Water Bodies
- County Archeology Report Database
- County Boundary2



This product may contain information which has been replicated with the permission granted by Thomas Brothers Maps.

Map center: 32° 37' 5&#034; N, 116° 11' 36&#034; W



Scale: 1:21,424

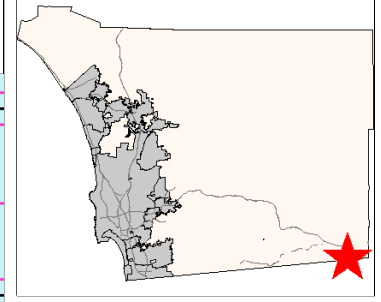
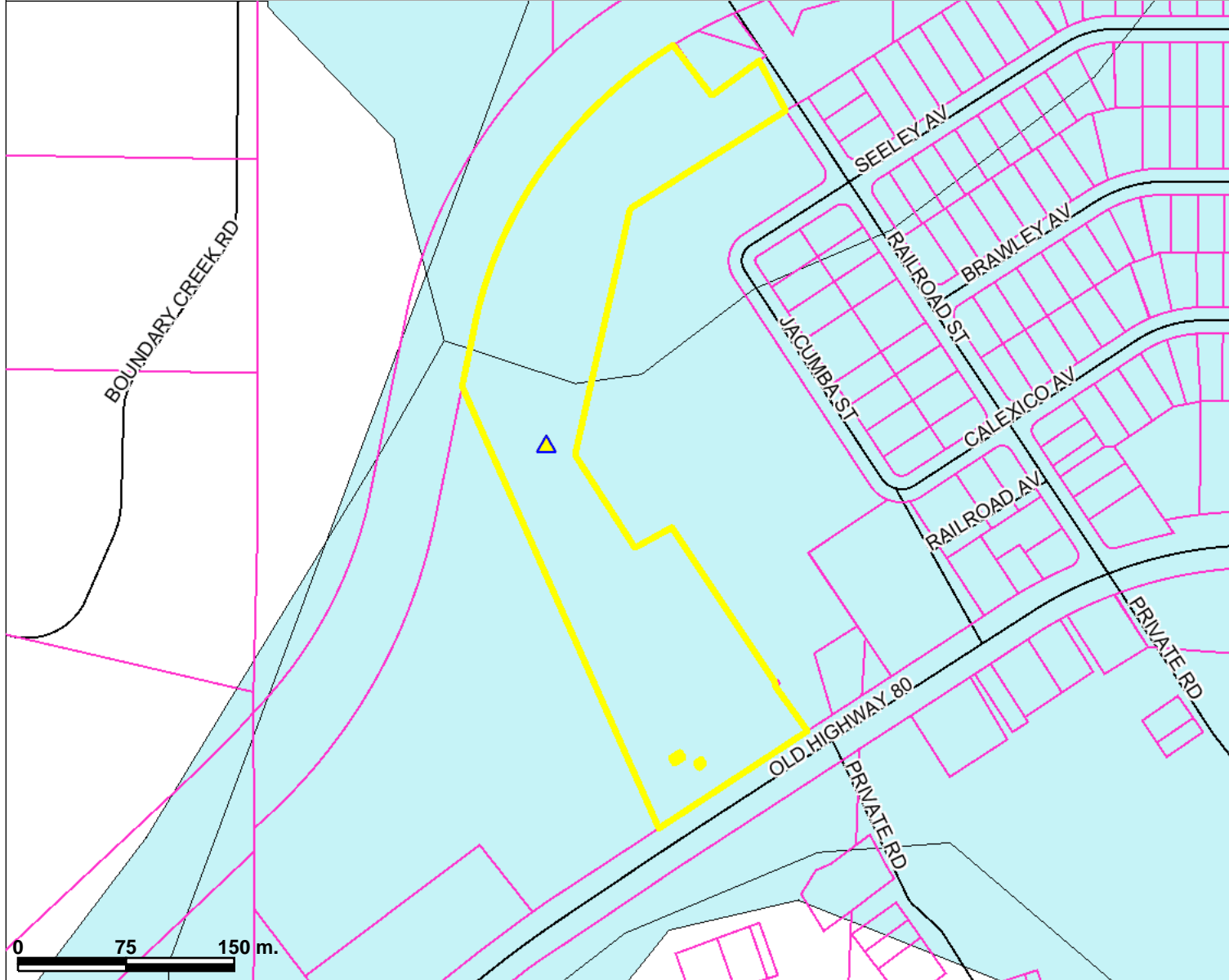
THIS MAP/DATA IS PROVIDED WITHOUT WARRANTY OF ANY KIND, EITHER EXPRESS OR IMPLIED, INCLUDING BUT NOT LIMITED TO THE IMPLIED WARRANTIES OF MERCHANTABILITY AND FITNESS FOR A PARTICULAR PURPOSE. This product may contain information from the SANDAG Regional Information System which cannot be reproduced without the written permission of SANDAG.



**Arch-Bio Database**

QUAD	REPORT	TYPE	PROJECT#	ER LOG#	TITLE	ORGANIZATI	ARCH SITE	DATE PREP	APN	CONTACT	NOTES	USGS QUAD	AREA
22	8	A		83-22-1		Graves Engineering					Archeological resources present	Jacumba, L	21442241.74
22	11	A	SP 91-003		Jacumba Valley Ranch	Brian F. Mooney and Associates		4/1/1991			SDI-4455, SDI-6741, SDI-7056, SDI-11676, SDI-8072, SDI-11689, SDI-8430, SDI-11675, SDI-11677, SDI-11685, SDI-11684, SDI-11694, SDI-11683, SDI-11685, SDI-11688, SDI-11690, SDI-11678, SDI-11681, SDI-11679	Jacumba	47946523.64
22	9	A			BLM CA Desert Project						Archeological resources present: 30 individual sites	Jacumba	160316.78
22	9	A			BLM CA Desert Project						Archeological resources present: 30 individual sites	Jacumba	160316.78
22	9	A			BLM CA Desert Project						Archeological resources present: 30 individual sites	Jacumba	197312.96
22	9	A			BLM CA Desert Project						Archeological resources present: 30 individual sites	Jacumba	110988.54
22	9	A			BLM CA Desert Project						Archeological resources present: 30 individual sites	Jacumba	200395.97
22	9	A			BLM CA Desert Project						Archeological resources present: 30 individual sites	Jacumba	262056.27

# P10-014 Liquefaction Areas



## Legend

- Parcels with out labels
- Streets
- Water Bodies
- Water Bodies
- new\_liquefaction
- County Boundary2



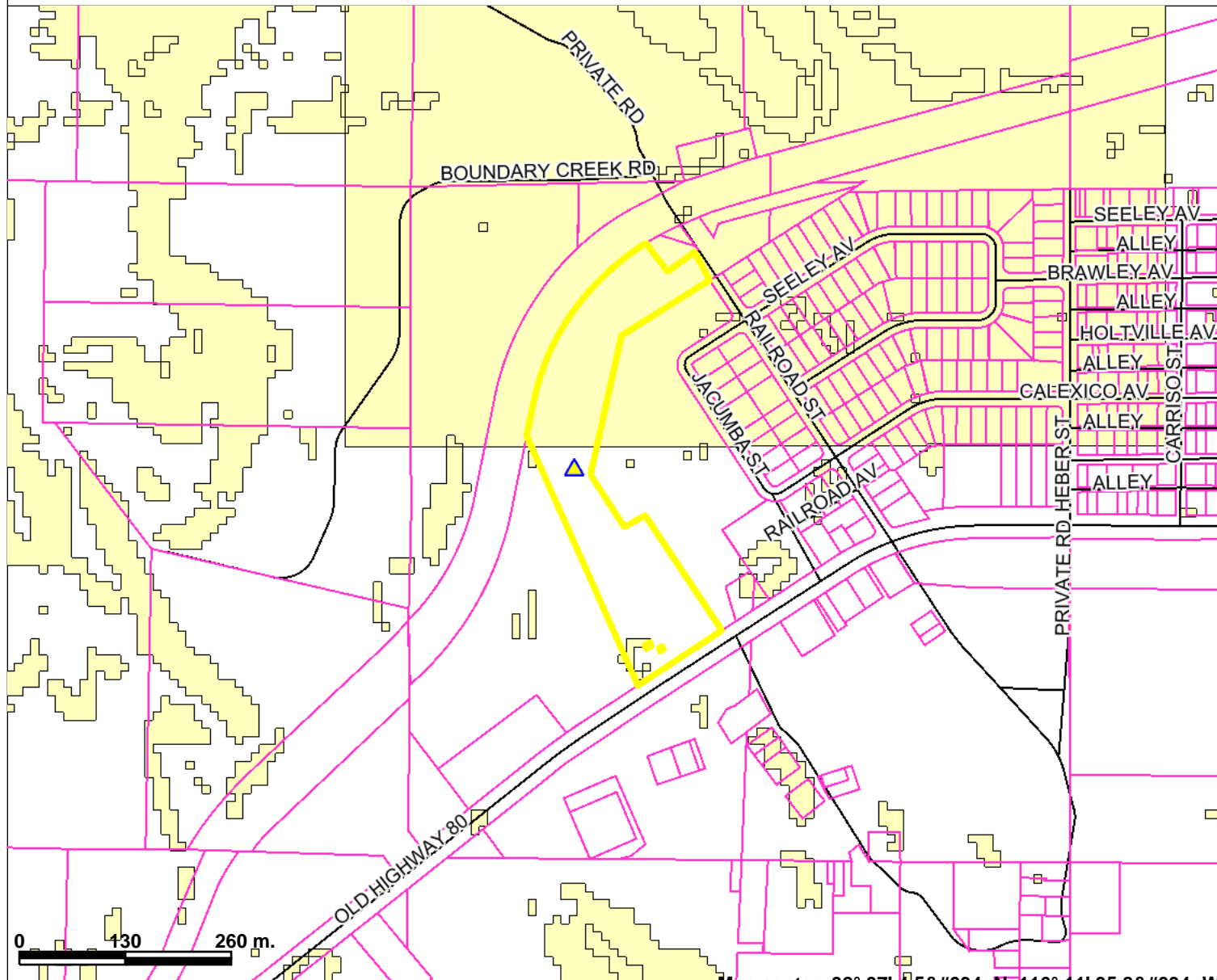
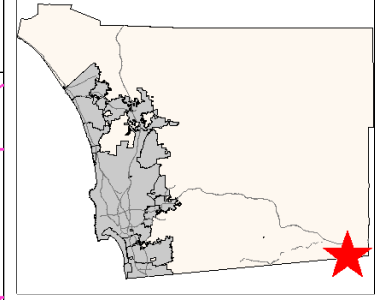
Scale: 1:4,285

This product may contain information which has been replicated with the permission granted by Thomas Brothers Maps. **Map center: 32° 37' 4.5&#034; N, 116° 11' 35.8&#034; W**

THIS MAP/DATA IS PROVIDED WITHOUT WARRANTY OF ANY KIND, EITHER EXPRESS OR IMPLIED, INCLUDING BUT NOT LIMITED TO THE IMPLIED WARRANTIES OF MERCHANTABILITY AND FITNESS FOR A PARTICULAR PURPOSE. This product may contain information from the SANDAG Regional Information System which cannot be reproduced without the written permission of SANDAG.



# P10-014 Landslide Susceptibility



**Legend**

- Parcels with out labels
- Streets
- Water Bodies
- Landslide Susceptibility
- Landslide Susceptibility
- Landslide Susceptibility
- Landslide Susceptibility
- County Boundary2

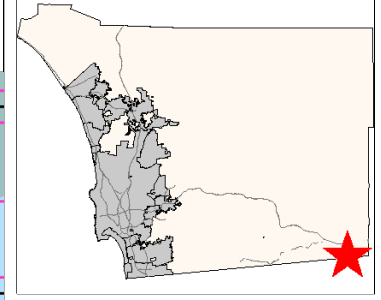
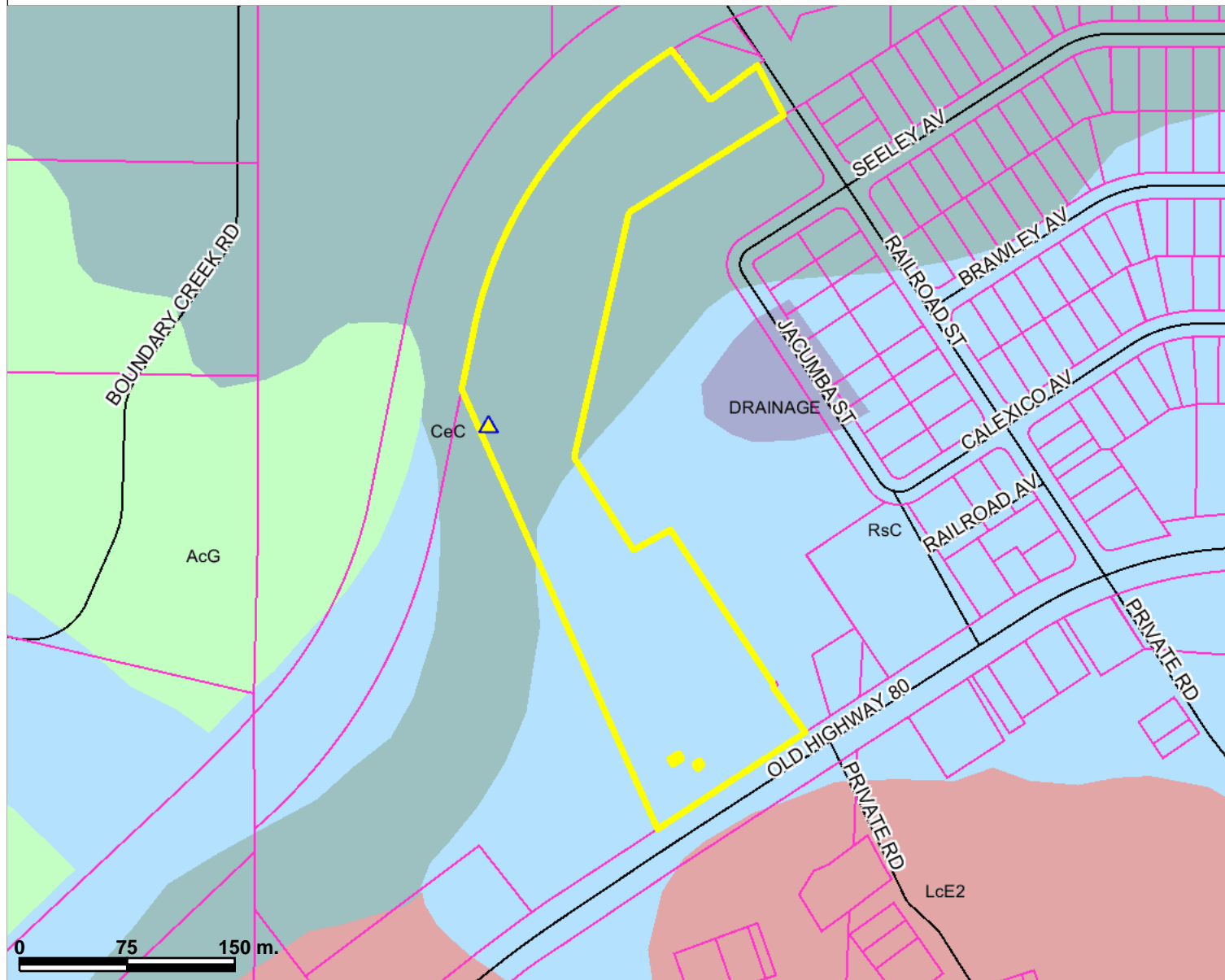
Scale: 1:7,498

This product may contain information which has been replicated with the permission granted by Thomas Brothers Maps. Map center: 32° 37' 4.5&#034; N, 116° 11' 35.8&#034; W

THIS MAP/DATA IS PROVIDED WITHOUT WARRANTY OF ANY KIND, EITHER EXPRESS OR IMPLIED, INCLUDING BUT NOT LIMITED TO THE IMPLIED WARRANTIES OF MERCHANTABILITY AND FITNESS FOR A PARTICULAR PURPOSE. This product may contain information from the SANDAG Regional Information System which cannot be reproduced without the written permission of SANDAG.



# P10-014 Soils



## Legend

- Parcels with out labels
- Streets
- Water Bodies**
- Water Bodies
- Soils**
- Acid igneous rock land
- Altamont clay
- Anderson very gravelly sandy loam
- Arlington coarse sandy loam
- Auld clay
- Auld stony clay
- Badland
- Bancas stony loam
- Blasingame loam
- Blasingame stony loam
- Bonsall-Fallbrook sandy loam
- Bonsall sandy loam
- Bonsall sandy loam, thick surface
- Boomer loam
- Boomer stony loam
- Bosanko clay
- Bosanko stony clay
- Bull Trail sandy loam
- Calpine coarse sandy loam
- Carlsbad gravelly loamy sand
- Carlsbad-Urban land complex
- Carrizo very gravelly sand
- Chesterton fine sandy loam
- Chesterton-Urban land complex
- Chino fine sandy loam
- Chino silt loam, saline
- Cieneba coarse sandy loam
- Cieneba-Fallbrook rocky sandy loam
- Cieneba rocky coarse sand loam
- Clayey alluvial land
- Coastal beaches



Map center: 32° 37' 4.5&#034; N, 116° 11' 35.8&#034; W



Scale: 1:4,285

This product may contain information which has been replicated with the permission granted by Thomas Brothers Maps.

THIS MAP/DATA IS PROVIDED WITHOUT WARRANTY OF ANY KIND, EITHER EXPRESS OR IMPLIED, INCLUDING BUT NOT LIMITED TO THE IMPLIED WARRANTIES OF MERCHANTABILITY AND FITNESS FOR A PARTICULAR PURPOSE. This product may contain information from the SANDAG Regional Information System which cannot be reproduced without the written permission of SANDAG.



### SOIL EVALUATION

No.	SOIL TYPE	Cap Class	Story Index	Shrink/Swell	Erosion Index
1	CeC Carrizo very gravelly sand, 0 to 9 percent slopes	7s-4(30)	12	Low	Severe 2
2	RsC Rositas loamy coarse sand, 2 to 9 percent slopes	4s-4(30)	39	Low	Severe 2




# P10-014 LEA Solid Waste Facilities



### Legend

- LEA Solid Waste Facilities
- SW Burnsite
- Active SW Facility
- Streets
- Highways
- Freeways
- Parcels
- 2007 Orthophoto South West
- 2007 Orthophoto South East
- 2007 Orthophoto North West
- 2007 Orthophoto North East



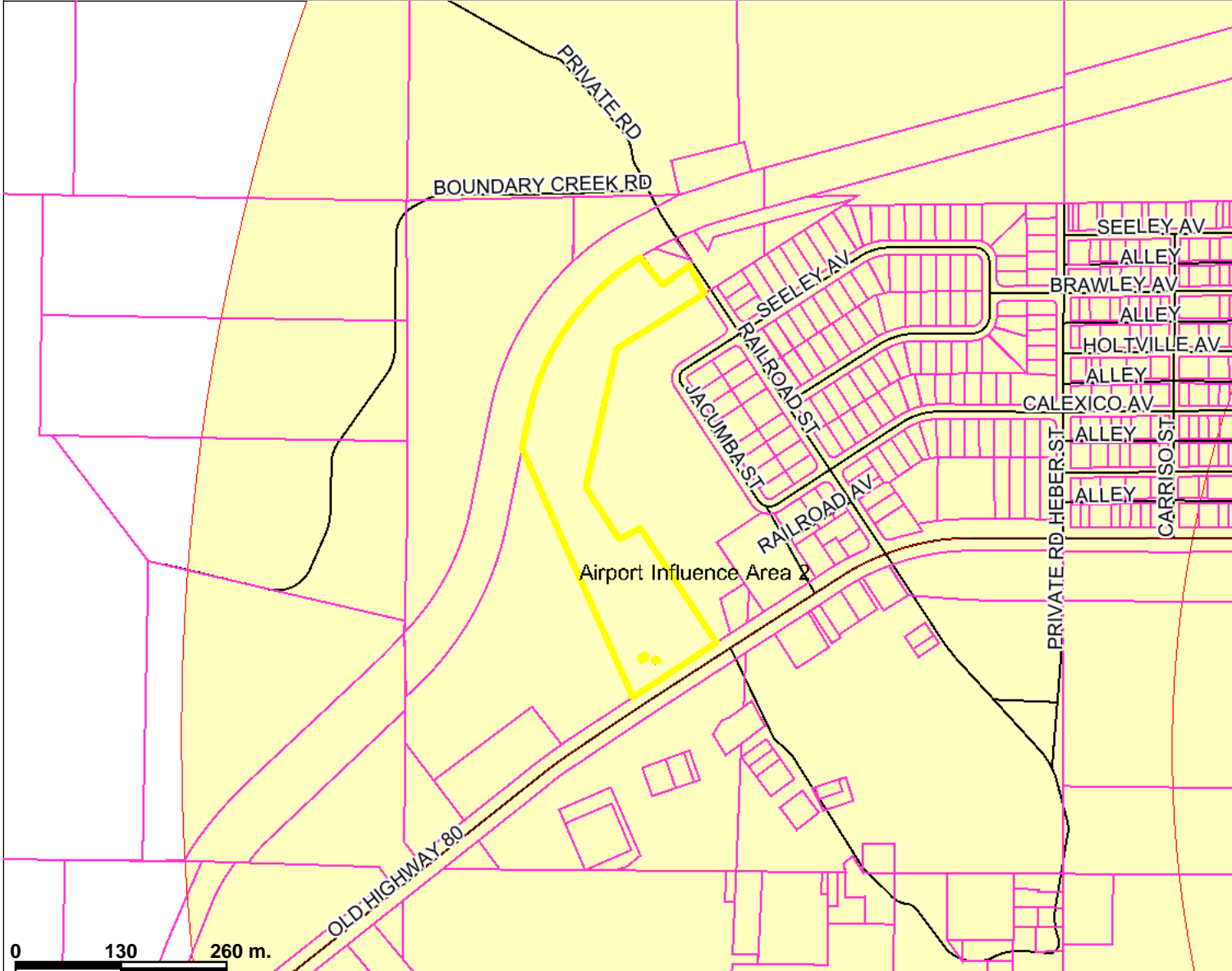
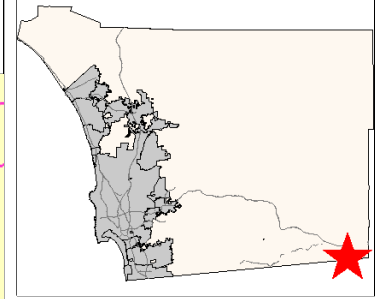

DISCLAIMER: THIS MAP/DATA IS PROVIDED WITHOUT WARRANTY OF ANY KIND, EITHER EXPRESS OR IMPLIED, INCLUDING BUT NOT LIMITED TO, THE IMPLIED WARRANTIES OF MERCHANTABILITY AND FITNESS FOR A PARTICULAR PURPOSE.

Note: This product may contain information from the SANDAG Regional Information System which cannot be reproduced without the written permission of SANDAG. This product may contain information reproduced with permission granted by RAND McNALLY & Co. to SanGIS. This map is copyrighted by RAND McNALLY & Co.

It is unlawful to copy or reproduce all or any part thereof, whether for personal use or resale, without the prior, written permission of RAND McNALLY & Co. Copyright SanGIS 2009 - All Rights Reserved. Full text of this legal notice can be found at: [http://www.sangis.org/Legal\\_Notice.htm](http://www.sangis.org/Legal_Notice.htm)



# P10-014 Airport Safety Zones



### Legend

- Parcels with out labels
- Highways
- Freeways
- Streets
- Water Bodies
- Water Bodies
- Airport Safety Zones**
- Runway
- Zone 1
- Zone 2
- Zone 3
- Zone 4
- Zone 5
- Zone 6
- Zone 99
- County Boundary2

0 130 260 m.

Map center: 32° 37' 4.9&#034; N, 116° 11' 35.3&#034; W

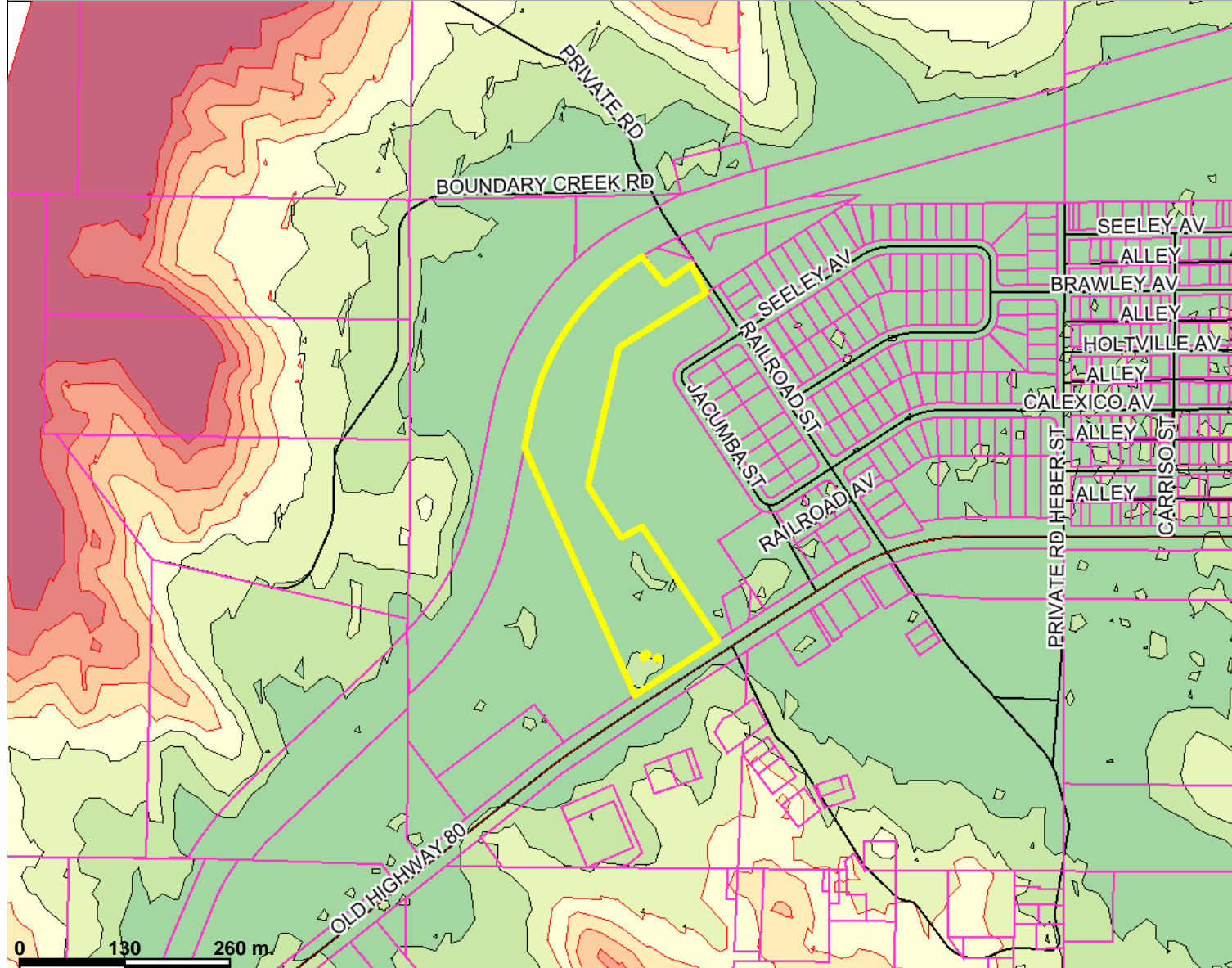
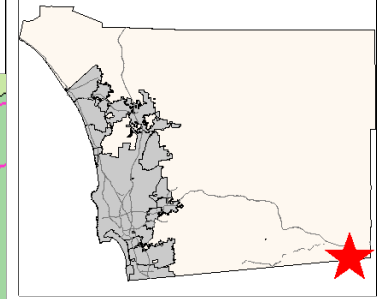
Scale: 1:7,647

This product may contain information which has been replicated with the permission granted by Thomas Brothers Maps.

THIS MAP/DATA IS PROVIDED WITHOUT WARRANTY OF ANY KIND, EITHER EXPRESS OR IMPLIED, INCLUDING BUT NOT LIMITED TO THE IMPLIED WARRANTIES OF MERCHANTABILITY AND FITNESS FOR A PARTICULAR PURPOSE. This product may contain information from the SANDAG Regional Information System which cannot be reproduced without the written permission of SANDAG.



# P10-014 FAA\_Height\_Notification\_Surface



### Legend

- Parcels with out labels
- Highways
- Freeways
- Streets
- Water Bodies
- Water Bodies
- FAA Height Notification Zones**
- Max elevation below to 201 feet below FAAHNS
- 200 to 151 feet below FAAHNS
- 150 to 101 feet below FAAHNS
- 100 to 81 feet below FAAHNS
- 80 to 61 feet below FAAHNS
- 60 to 41 feet below FAAHNS
- 40 to 21 feet below FAAHNS
- 20 to Zero feet below FAAHNS
- 1 to 20 feet above FAAHNS (notification required automatically)
- 21 to 40 feet above FAAHNS (notification required automatically)
- 41 to maximum elevation above FAAHNS (notification required automatically)
- County Boundary2

0 130 260 m

Map center: 32° 37' 4.9&#034; N, 116° 11' 35.3&#034; W

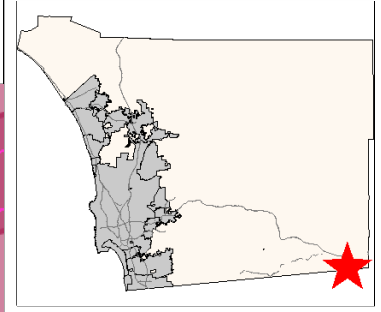
Scale: 1:7,647

This product may contain information which has been replicated with the permission granted by Thomas Brothers Maps.

THIS MAP/DATA IS PROVIDED WITHOUT WARRANTY OF ANY KIND, EITHER EXPRESS OR IMPLIED, INCLUDING BUT NOT LIMITED TO THE IMPLIED WARRANTIES OF MERCHANTABILITY AND FITNESS FOR A PARTICULAR PURPOSE. This product may contain information from the SANDAG Regional Information System which cannot be reproduced without the written permission of SANDAG.



# P10-014 Noise Constraints



**Legend**

- Parcels with out labels
- Streets
- Water Bodies
- Noise Layer
- County Boundary2

Scale: 1:6,159

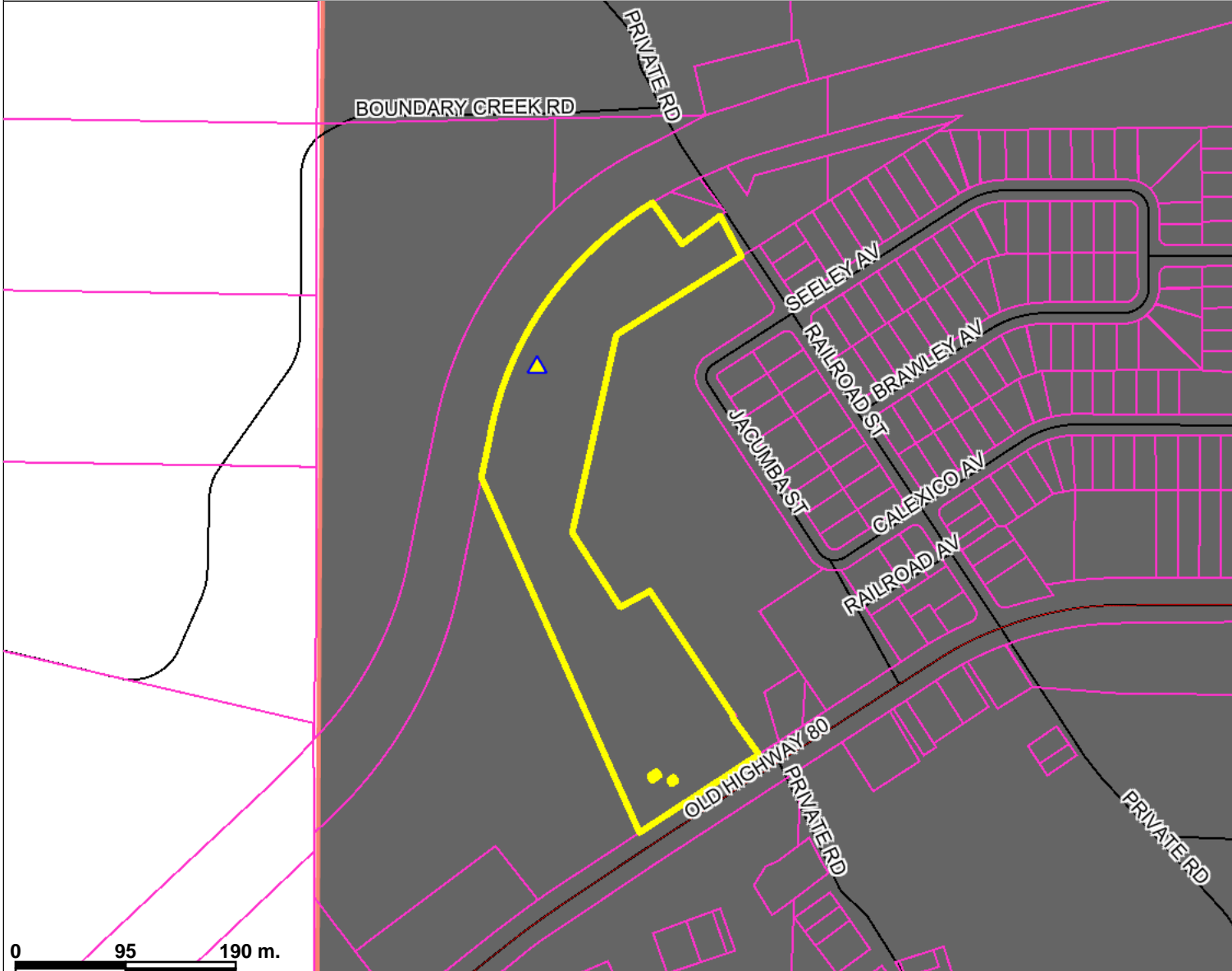
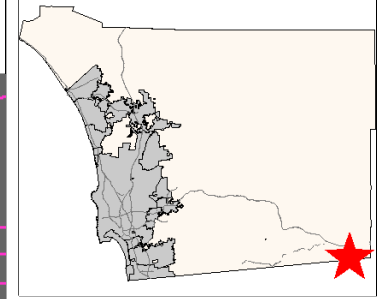


This product may contain information which has been replicated with the permission granted by Thomas Brothers Maps. **Map center: 32° 37' 7.18" N, 116° 11' 38.18" W**

THIS MAP/DATA IS PROVIDED WITHOUT WARRANTY OF ANY KIND, EITHER EXPRESS OR IMPLIED, INCLUDING BUT NOT LIMITED TO THE IMPLIED WARRANTIES OF MERCHANTABILITY AND FITNESS FOR A PARTICULAR PURPOSE. This product may contain information from the SANDAG Regional Information System which cannot be reproduced without the written permission of SANDAG.



# P10-014 Special Circumstance Areas Jacumba RPO #11



**Legend**

- Parcels with out labels
- Highways
- Freeways
- Streets
- Water Bodies
- Special Circumstances
- County Boundary2

**Scale: 1:5,356**

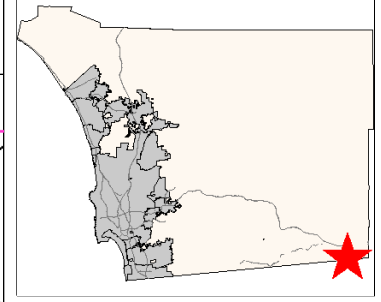
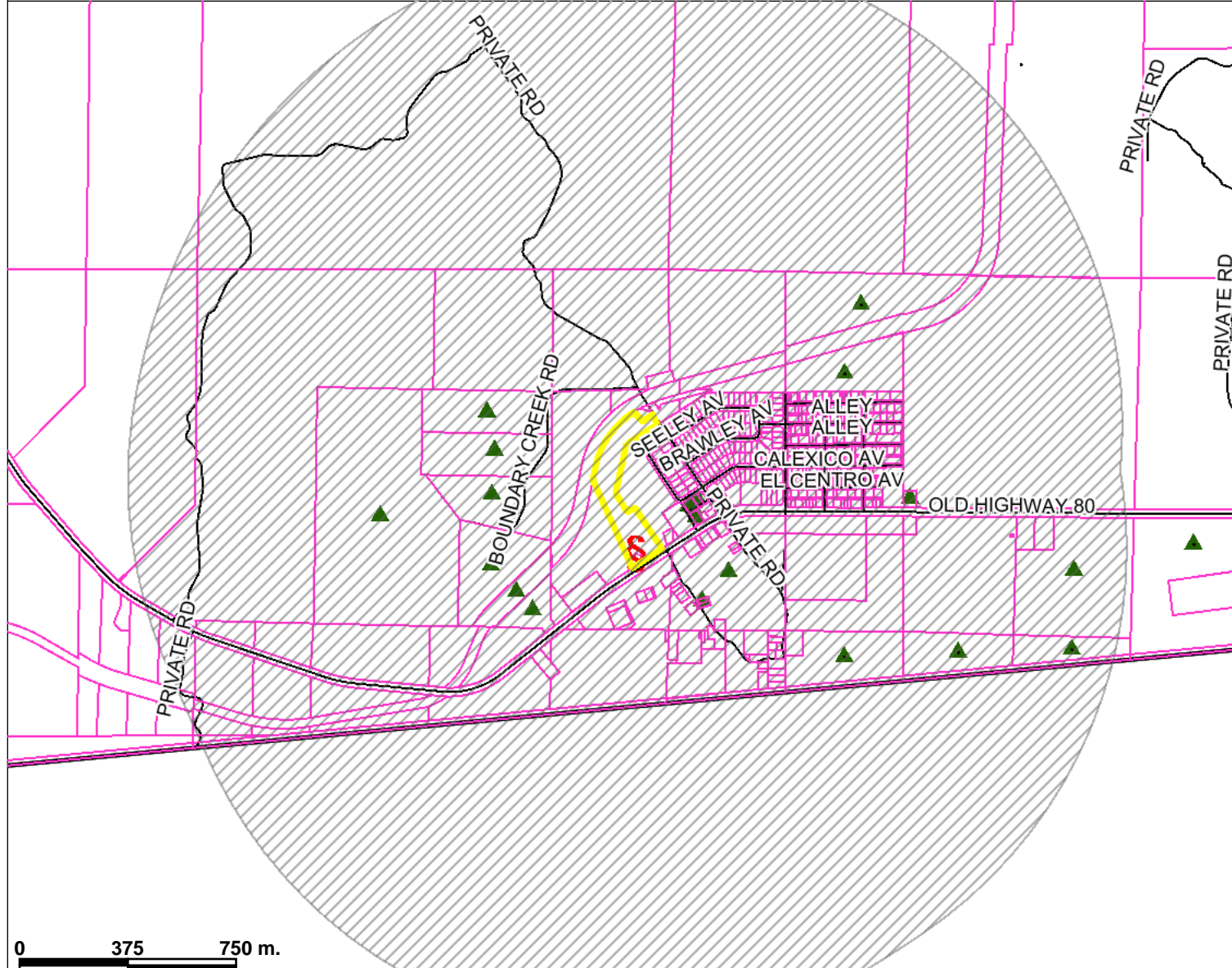


This product may contain information which has been replicated with the permission granted by Thomas Brothers Maps. **Map center: 32° 37' 6.4&#034; N, 116° 11' 35.3&#034; W**

THIS MAP/DATA IS PROVIDED WITHOUT WARRANTY OF ANY KIND, EITHER EXPRESS OR IMPLIED, INCLUDING BUT NOT LIMITED TO THE IMPLIED WARRANTIES OF MERCHANTABILITY AND FITNESS FOR A PARTICULAR PURPOSE. This product may contain information from the SANDAG Regional Information System which cannot be reproduced without the written permission of SANDAG.

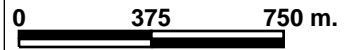


# P10-014 Discretionary Applications



## Legend

- Parcels with out labels
- Streets
- Water Bodies
- Water Bodies
- Discretionary Applications
- Done
- Open
- Cancelled/Expired/Void
- Unknown
- Other
- County Boundary2



Map center: 32° 37' 5" N, 116° 11' 36" W



Scale: 1:21,424

THIS MAP/DATA IS PROVIDED WITHOUT WARRANTY OF ANY KIND, EITHER EXPRESS OR IMPLIED, INCLUDING BUT NOT LIMITED TO THE IMPLIED WARRANTIES OF MERCHANTABILITY AND FITNESS FOR A PARTICULAR PURPOSE. This product may contain information from the SANDAG Regional Information System which cannot be reproduced without the written permission of SANDAG.



This product may contain information which has been replicated with the permission granted by Thomas Brothers Maps.

### Discretionary Applications

PID	TYPE_DESC	STATUS	COMPL_DATE	PER_TYPE	PROP_CODE	PER_NUM	PER_NAME	APN
675335	TENTATIVE MAP	IDLE		3100	3TM>100	5524	KETCHUM RANCH, GPA,SP,TM,REZ,MUP,STP, AD	660-150-04-00
675335	TENTATIVE MAP	IDLE		3100	3TM>100	5524	KETCHUM RANCH, GPA,SP,TM,REZ,MUP,STP, AD	660-150-07-00
675335	TENTATIVE MAP	IDLE		3100	3TM>100	5524	KETCHUM RANCH, GPA,SP,TM,REZ,MUP,STP, AD	660-150-08-00
675335	TENTATIVE MAP	IDLE		3100	3TM>100	5524	KETCHUM RANCH, GPA,SP,TM,REZ,MUP,STP, AD	660-150-10-00
675335	TENTATIVE MAP	IDLE		3100	3TM>100	5524	KETCHUM RANCH, GPA,SP,TM,REZ,MUP,STP, AD	660-150-14-00
675335	TENTATIVE MAP	IDLE		3100	3TM>100	5524	KETCHUM RANCH, GPA,SP,TM,REZ,MUP,STP, AD	660-150-17-00
675335	TENTATIVE MAP	IDLE		3100	3TM>100	5524	KETCHUM RANCH, GPA,SP,TM,REZ,MUP,STP, AD	660-150-18-00
675336	REZONE	IDLE		3600	3REZ	06-019	KETCHUM RANCH, GPA,SP,TM,REZ,MUP,STP, AD	660-150-04-00
675336	REZONE	IDLE		3600	3REZ	06-019	KETCHUM RANCH, GPA,SP,TM,REZ,MUP,STP, AD	660-150-07-00
675336	REZONE	IDLE		3600	3REZ	06-019	KETCHUM RANCH, GPA,SP,TM,REZ,MUP,STP, AD	660-150-08-00
675336	REZONE	IDLE		3600	3REZ	06-019	KETCHUM RANCH, GPA,SP,TM,REZ,MUP,STP, AD	660-150-10-00
675336	REZONE	IDLE		3600	3REZ	06-019	KETCHUM RANCH, GPA,SP,TM,REZ,MUP,STP, AD	660-150-14-00
675336	REZONE	IDLE		3600	3REZ	06-019	KETCHUM RANCH, GPA,SP,TM,REZ,MUP,STP, AD	660-150-17-00
675336	REZONE	IDLE		3600	3REZ	06-019	KETCHUM RANCH, GPA,SP,TM,REZ,MUP,STP, AD	660-150-18-00
675338	MAJOR USE PERMIT	IDLE		3300	3MUP	06-099	KETCHUM RANCH, GPA,SP,TM,REZ,MUP,STP, AD	660-150-04-00
675338	MAJOR USE PERMIT	IDLE		3300	3MUP	06-099	KETCHUM RANCH, GPA,SP,TM,REZ,MUP,STP, AD	660-150-07-00
675338	MAJOR USE PERMIT	IDLE		3300	3MUP	06-099	KETCHUM RANCH, GPA,SP,TM,REZ,MUP,STP, AD	660-150-08-00
675338	MAJOR USE PERMIT	IDLE		3300	3MUP	06-099	KETCHUM RANCH, GPA,SP,TM,REZ,MUP,STP, AD	660-150-10-00
786229	MAJOR USE PERMIT	OPEN		3300	3MUP	10-014	JACUMBA COMMUNITY SERVICE DISTRICT, P10-	660-040-32-00
675338	MAJOR USE PERMIT	IDLE		3300	3MUP	06-099	KETCHUM RANCH, GPA,SP,TM,REZ,MUP,STP, AD	660-150-14-00
675338	MAJOR USE PERMIT	IDLE		3300	3MUP	06-099	KETCHUM RANCH, GPA,SP,TM,REZ,MUP,STP, AD	660-150-17-00
675338	MAJOR USE PERMIT	IDLE		3300	3MUP	06-099	KETCHUM RANCH, GPA,SP,TM,REZ,MUP,STP, AD	660-150-18-00
675339	SITE PLAN	IDLE		3500	3STP	06-055	KETCHUM RANCH, GPA,SP,TM,REZ,MUP,STP, AD	660-150-04-00
675339	SITE PLAN	IDLE		3500	3STP	06-055	KETCHUM RANCH, GPA,SP,TM,REZ,MUP,STP, AD	660-150-07-00
675339	SITE PLAN	IDLE		3500	3STP	06-055	KETCHUM RANCH, GPA,SP,TM,REZ,MUP,STP, AD	660-150-08-00
675339	SITE PLAN	IDLE		3500	3STP	06-055	KETCHUM RANCH, GPA,SP,TM,REZ,MUP,STP, AD	660-150-10-00
675339	SITE PLAN	IDLE		3500	3STP	06-055	KETCHUM RANCH, GPA,SP,TM,REZ,MUP,STP, AD	660-150-14-00
675339	SITE PLAN	IDLE		3500	3STP	06-055	KETCHUM RANCH, GPA,SP,TM,REZ,MUP,STP, AD	660-150-17-00
675339	SITE PLAN	IDLE		3500	3STP	06-055	KETCHUM RANCH, GPA,SP,TM,REZ,MUP,STP, AD	660-150-18-00
675340	ADMINISTRATIVE PERMIT	IDLE		3000	3ADHOA	06-069	KETCHUM RANCH, GPA,SP,TM,REZ,MUP,STP, AD	660-150-04-00
675340	ADMINISTRATIVE PERMIT	IDLE		3000	3ADHOA	06-069	KETCHUM RANCH, GPA,SP,TM,REZ,MUP,STP, AD	660-150-07-00
675340	ADMINISTRATIVE PERMIT	IDLE		3000	3ADHOA	06-069	KETCHUM RANCH, GPA,SP,TM,REZ,MUP,STP, AD	660-150-08-00
675340	ADMINISTRATIVE PERMIT	IDLE		3000	3ADHOA	06-069	KETCHUM RANCH, GPA,SP,TM,REZ,MUP,STP, AD	660-150-10-00
675340	ADMINISTRATIVE PERMIT	IDLE		3000	3ADHOA	06-069	KETCHUM RANCH, GPA,SP,TM,REZ,MUP,STP, AD	660-150-14-00
675340	ADMINISTRATIVE PERMIT	IDLE		3000	3ADHOA	06-069	KETCHUM RANCH, GPA,SP,TM,REZ,MUP,STP, AD	660-150-17-00
675340	ADMINISTRATIVE PERMIT	IDLE		3000	3ADHOA	06-069	KETCHUM RANCH, GPA,SP,TM,REZ,MUP,STP, AD	660-150-18-00
654427	PLAN AMENDMENT AUTHORIZATION	DONE	6-Sep-06	3801	3GPAPAA	06-009	JACUMBA VALLEY RANCH	660-150-04-00
654427	PLAN AMENDMENT AUTHORIZATION	DONE	6-Sep-06	3801	3GPAPAA	06-009	JACUMBA VALLEY RANCH	660-150-07-00
654427	PLAN AMENDMENT AUTHORIZATION	DONE	6-Sep-06	3801	3GPAPAA	06-009	JACUMBA VALLEY RANCH	660-150-08-00
654427	PLAN AMENDMENT AUTHORIZATION	DONE	6-Sep-06	3801	3GPAPAA	06-009	JACUMBA VALLEY RANCH	660-150-10-00

654427	PLAN AMENDMENT AUTHORIZATION	DONE	6-Sep-06	3801	3GPAPAA	06-009	JACUMBA VALLEY RANCH	660-150-14-00
654427	PLAN AMENDMENT AUTHORIZATION	DONE	6-Sep-06	3801	3GPAPAA	06-009	JACUMBA VALLEY RANCH	660-150-17-00
654427	PLAN AMENDMENT AUTHORIZATION	DONE	6-Sep-06	3801	3GPAPAA	06-009	JACUMBA VALLEY RANCH	660-150-18-00
675329	GENERAL PLAN AMENDMENT	IDLE		3800	3GPA	06-014	KETCHUM RANCH, GPA,SP,TM,REZ,MUP,STP, AD	660-150-04-00
675329	GENERAL PLAN AMENDMENT	IDLE		3800	3GPA	06-014	KETCHUM RANCH, GPA,SP,TM,REZ,MUP,STP, AD	660-150-07-00
675329	GENERAL PLAN AMENDMENT	IDLE		3800	3GPA	06-014	KETCHUM RANCH, GPA,SP,TM,REZ,MUP,STP, AD	660-150-08-00
675329	GENERAL PLAN AMENDMENT	IDLE		3800	3GPA	06-014	KETCHUM RANCH, GPA,SP,TM,REZ,MUP,STP, AD	660-150-10-00
675329	GENERAL PLAN AMENDMENT	IDLE		3800	3GPA	06-014	KETCHUM RANCH, GPA,SP,TM,REZ,MUP,STP, AD	660-150-14-00
675329	GENERAL PLAN AMENDMENT	IDLE		3800	3GPA	06-014	KETCHUM RANCH, GPA,SP,TM,REZ,MUP,STP, AD	660-150-17-00
675329	GENERAL PLAN AMENDMENT	IDLE		3800	3GPA	06-014	KETCHUM RANCH, GPA,SP,TM,REZ,MUP,STP, AD	660-150-18-00
552319	SITE PLAN	DONE	22-Jul-03	3500	3STPLEGACY	03-037		660-064-01-00
552319	SITE PLAN	DONE	22-Jul-03	3500	3STPLEGACY	03-037		660-064-02-00
552319	SITE PLAN	DONE	22-Jul-03	3500	3STPLEGACY	03-037		660-064-03-00
552319	SITE PLAN	DONE	22-Jul-03	3500	3STPLEGACY	03-037		660-073-01-00
553507	SITE PLAN	DONE	6-May-03	3500	3STPLEGACY	03-005		660-064-01-00
553507	SITE PLAN	DONE	6-May-03	3500	3STPLEGACY	03-005		660-064-02-00
553507	SITE PLAN	DONE	6-May-03	3500	3STPLEGACY	03-005		660-064-03-00
553507	SITE PLAN	DONE	6-May-03	3500	3STPLEGACY	03-005		660-073-01-00
552327	ADMINISTRATIVE PERMIT	DONE	7-Jun-03	3000	3ADLEGACY	03-046		660-064-01-00
552327	ADMINISTRATIVE PERMIT	DONE	7-Jun-03	3000	3ADLEGACY	03-046		660-064-02-00
552327	ADMINISTRATIVE PERMIT	DONE	7-Jun-03	3000	3ADLEGACY	03-046		660-064-03-00
552327	ADMINISTRATIVE PERMIT	DONE	7-Jun-03	3000	3ADLEGACY	03-046		660-073-01-00
552430	SITE PLAN	DONE	6-May-03	3500	3STPLEGACY	03-013		660-064-01-00
552430	SITE PLAN	DONE	6-May-03	3500	3STPLEGACY	03-013		660-064-02-00
552430	SITE PLAN	DONE	6-May-03	3500	3STPLEGACY	03-013		660-064-03-00
552430	SITE PLAN	DONE	6-May-03	3500	3STPLEGACY	03-013		660-073-01-00
551191	TENTATIVE PARCEL MAP	DONE	7-Sep-98	3200	3TPMLEGACY	20214		660-030-14-00
551191	TENTATIVE PARCEL MAP	DONE	7-Sep-98	3200	3TPMLEGACY	20214		660-030-22-00
551191	TENTATIVE PARCEL MAP	DONE	7-Sep-98	3200	3TPMLEGACY	20214		660-030-25-00
551191	TENTATIVE PARCEL MAP	DONE	7-Sep-98	3200	3TPMLEGACY	20214		660-030-26-00
551191	TENTATIVE PARCEL MAP	DONE	7-Sep-98	3200	3TPMLEGACY	20214		660-030-27-00
551191	TENTATIVE PARCEL MAP	DONE	7-Sep-98	3200	3TPMLEGACY	20214		660-030-28-00
551191	TENTATIVE PARCEL MAP	DONE	7-Sep-98	3200	3TPMLEGACY	20214		660-030-29-00
550065	MAJOR USE PERMIT	DONE	1-Aug-07	3300	3MUPCELL	77-009	PACIFIC BELL	660-110-11-00
551831	REZONE	DONE	16-Sep-03	3600	3REZ	02-006		660-064-01-00
551831	REZONE	DONE	16-Sep-03	3600	3REZ	02-006		660-064-02-00
551831	REZONE	DONE	16-Sep-03	3600	3REZ	02-006		660-064-03-00
551831	REZONE	DONE	16-Sep-03	3600	3REZ	02-006		660-073-01-00
548195	MAJOR USE PERMIT	DONE	20-Jan-05	3300	3MUPLEGACY	99-014		660-064-01-00
548195	MAJOR USE PERMIT	DONE	20-Jan-05	3300	3MUPLEGACY	99-014		660-064-02-00
548195	MAJOR USE PERMIT	DONE	20-Jan-05	3300	3MUPLEGACY	99-014		660-064-03-00
548195	MAJOR USE PERMIT	DONE	20-Jan-05	3300	3MUPLEGACY	99-014		660-073-01-00
548516	SITE PLAN	DONE	19-Jun-03	3500	3STPLEGACY	03-007		660-064-01-00



548516	SITE PLAN	DONE	19-Jun-03	3500	3STPLEGACY	03-007		660-064-02-00
548516	SITE PLAN	DONE	19-Jun-03	3500	3STPLEGACY	03-007		660-064-03-00
548516	SITE PLAN	DONE	19-Jun-03	3500	3STPLEGACY	03-007		660-073-01-00
548950	BOUNDARY ADJUSTMENT	DONE	6-Aug-02	3700	3BA	99-0095	HIDDEN MEADOWS BA	660-064-01-00
548950	BOUNDARY ADJUSTMENT	DONE	6-Aug-02	3700	3BA	99-0095	HIDDEN MEADOWS BA	660-064-02-00
548950	BOUNDARY ADJUSTMENT	DONE	6-Aug-02	3700	3BA	99-0095	HIDDEN MEADOWS BA	660-064-03-00
548950	BOUNDARY ADJUSTMENT	DONE	6-Aug-02	3700	3BA	99-0095	HIDDEN MEADOWS BA	660-073-01-00
554384	MAJOR USE PERMIT	APPR	10-Feb-05	3300	3MUPLEGACY	79-152	HIDDEN MEADOWS - OAK WOODLANDS	660-064-01-00
554384	MAJOR USE PERMIT	APPR	10-Feb-05	3300	3MUPLEGACY	79-152	HIDDEN MEADOWS - OAK WOODLANDS	660-064-02-00
554384	MAJOR USE PERMIT	APPR	10-Feb-05	3300	3MUPLEGACY	79-152	HIDDEN MEADOWS - OAK WOODLANDS	660-064-03-00
554384	MAJOR USE PERMIT	APPR	10-Feb-05	3300	3MUPLEGACY	79-152	HIDDEN MEADOWS - OAK WOODLANDS	660-073-01-00
557601	SITE PLAN	DONE	23-Jul-03	3500	3STPLEGACY	03-036		660-064-01-00
557601	SITE PLAN	DONE	23-Jul-03	3500	3STPLEGACY	03-036		660-064-02-00
557601	SITE PLAN	DONE	23-Jul-03	3500	3STPLEGACY	03-036		660-064-03-00
557601	SITE PLAN	DONE	23-Jul-03	3500	3STPLEGACY	03-036		660-073-01-00
553581	MAJOR USE PERMIT	DONE	20-Mar-01	3300	3MUPLEGACY	77-009		660-110-11-00
553581	MAJOR USE PERMIT	DONE	20-Mar-01	3300	3MUPLEGACY	77-009		660-110-22-00
553676	SITE PLAN	DONE	19-Jun-03	3500	3STPLEGACY	03-006		660-064-01-00
553676	SITE PLAN	DONE	19-Jun-03	3500	3STPLEGACY	03-006		660-064-02-00
553676	SITE PLAN	DONE	19-Jun-03	3500	3STPLEGACY	03-006		660-064-03-00
553676	SITE PLAN	DONE	19-Jun-03	3500	3STPLEGACY	03-006		660-073-01-00
554642	MAJOR USE PERMIT	DONE	17-Aug-03	3300	3MUPLEGACY	99-013		660-064-01-00
554642	MAJOR USE PERMIT	DONE	17-Aug-03	3300	3MUPLEGACY	99-013		660-064-02-00
554642	MAJOR USE PERMIT	DONE	17-Aug-03	3300	3MUPLEGACY	99-013		660-064-03-00
554642	MAJOR USE PERMIT	DONE	17-Aug-03	3300	3MUPLEGACY	99-013		660-073-01-00
553765	TENTATIVE MAP	DONE	19-Jun-05	3100	3TMLEGACY	5176	HIDDEN MEADOWS - OAK WOODLANDS	660-064-01-00
553765	TENTATIVE MAP	DONE	19-Jun-05	3100	3TMLEGACY	5176	HIDDEN MEADOWS - OAK WOODLANDS	660-064-02-00
553765	TENTATIVE MAP	DONE	19-Jun-05	3100	3TMLEGACY	5176	HIDDEN MEADOWS - OAK WOODLANDS	660-064-03-00
553765	TENTATIVE MAP	DONE	19-Jun-05	3100	3TMLEGACY	5176	HIDDEN MEADOWS - OAK WOODLANDS	660-073-01-00
555939	SITE PLAN	DONE	21-Apr-03	3500	3STPLEGACY	03-008		660-064-01-00
555939	SITE PLAN	DONE	21-Apr-03	3500	3STPLEGACY	03-008		660-064-02-00
555939	SITE PLAN	DONE	21-Apr-03	3500	3STPLEGACY	03-008		660-064-03-00
555939	SITE PLAN	DONE	21-Apr-03	3500	3STPLEGACY	03-008		660-073-01-00
554279	SITE PLAN	DONE	3-Dec-02	3500	3STPLEGACY	01-080		660-064-01-00
554279	SITE PLAN	DONE	3-Dec-02	3500	3STPLEGACY	01-080		660-064-02-00
554279	SITE PLAN	DONE	3-Dec-02	3500	3STPLEGACY	01-080		660-064-03-00
554279	SITE PLAN	DONE	3-Dec-02	3500	3STPLEGACY	01-080		660-073-01-00
558713	TENTATIVE MAP	DONE	17-Sep-03	3100	3TMLEGACY	5175		660-064-01-00
558713	TENTATIVE MAP	DONE	17-Sep-03	3100	3TMLEGACY	5175		660-064-02-00
558713	TENTATIVE MAP	DONE	17-Sep-03	3100	3TMLEGACY	5175		660-064-03-00
558713	TENTATIVE MAP	DONE	17-Sep-03	3100	3TMLEGACY	5175		660-073-01-00
558117	BOUNDARY ADJUSTMENT	DONE	2-Jul-02	3700	3BA	02-0118		660-064-01-00
558117	BOUNDARY ADJUSTMENT	DONE	2-Jul-02	3700	3BA	02-0118		660-064-02-00

558117	BOUNDARY ADJUSTMENT	DONE	2-Jul-02	3700	3BA	02-0118		660-064-03-00
558117	BOUNDARY ADJUSTMENT	DONE	2-Jul-02	3700	3BA	02-0118		660-073-01-00
558186	REZONE	DONE		3600	3REZ	99-012		660-064-01-00
558186	REZONE	DONE		3600	3REZ	99-012		660-064-02-00
558186	REZONE	DONE		3600	3REZ	99-012		660-064-03-00
558186	REZONE	DONE		3600	3REZ	99-012		660-073-01-00
675333	SPECIFIC PLAN	IDLE		3810	3SP	06-003	KETCHUM RANCH, GPA,SP,TM,REZ,MUP,STP, AD	660-150-04-00
675333	SPECIFIC PLAN	IDLE		3810	3SP	06-003	KETCHUM RANCH, GPA,SP,TM,REZ,MUP,STP, AD	660-150-07-00
675333	SPECIFIC PLAN	IDLE		3810	3SP	06-003	KETCHUM RANCH, GPA,SP,TM,REZ,MUP,STP, AD	660-150-08-00
675333	SPECIFIC PLAN	IDLE		3810	3SP	06-003	KETCHUM RANCH, GPA,SP,TM,REZ,MUP,STP, AD	660-150-10-00
675333	SPECIFIC PLAN	IDLE		3810	3SP	06-003	KETCHUM RANCH, GPA,SP,TM,REZ,MUP,STP, AD	660-150-14-00
675333	SPECIFIC PLAN	IDLE		3810	3SP	06-003	KETCHUM RANCH, GPA,SP,TM,REZ,MUP,STP, AD	660-150-17-00
675333	SPECIFIC PLAN	IDLE		3810	3SP	06-003	KETCHUM RANCH, GPA,SP,TM,REZ,MUP,STP, AD	660-150-18-00