

Job Name:	Location:
Purchaser:	
Engineer:	
Submitted To:	For: <input type="checkbox"/> Reference <input type="checkbox"/> Approval <input type="checkbox"/> Construction
Submitted By:	Date:
Unit Designation: Schedule #:	Model No.:

**Capacities:**

Cooling Capacity	192,000 Btu/h
Cooling Input Power	17.3 kW
Heating Capacity	216,000 Btu/h
Heating Input Power	18.4 kW (62,781 Btu/h)

**Cooling Mode Nominal Conditions:**

Indoor: 80°F DB / 67°F WB  
Outdoor: 95°F DB  
Pipe Length: 25 ft  
Level Difference: 0 ft

**Heating Mode Nominal Conditions:**

Indoor: 70°F DB  
Outdoor: 47°F DB / 43°F WB  
Pipe Length: 25 ft  
Level Difference: 0 ft

**Operating Range:**

Cooling	23°F – 110°F DB
Heating	0°F – 64°F DB -5°F – 60°F WB

**Compressor:**

Type	Daikin High Pressure Dome Scroll
Quantity	4 (2 PAM inverter and 2 on/off)
Capacity Control Range	7% - 100%
Motor Rating Output	(2.7 + 4.5) x 2 kW

**Fan:**

Fan Type x Quantity	Propeller Fan x 2
Fan Motor Output	750 + 750 Watts
Airflow Rate	7,400 + 7,400 cfm
Drive	Direct Drive

**Power Supply:**

V/PH/Hz	208-230/3/60
Minimum Circuit Amps (MCA)	44.8 + 44.8 Amps
Maximum Fuse Amps (MFA)	60 + 60 Amps
Maximum Starting Current (MSC)	142 Amps
Total Overcurrent Amps (TOCA)	90.9 Amps

**Refrigerant & Piping:**

Refrigerant Type/Charge	R-410A/27.3 + 27.3 lbs
Control	Electronic Expansion Valve
Liquid Refrigerant Piping	ϕ5/8" Brazing
Gas Refrigerant Piping	ϕ1-1/8" Brazing
Discharge Gas Piping	ϕ7/8" Brazing
Oil equalizing pipe	ϕ1/4" Flare

**Unit Data:**

Max. Number of Indoor Units	20
Sound Pressure Level at 3 ft	63 dBA
Weight	666 + 666 lbs

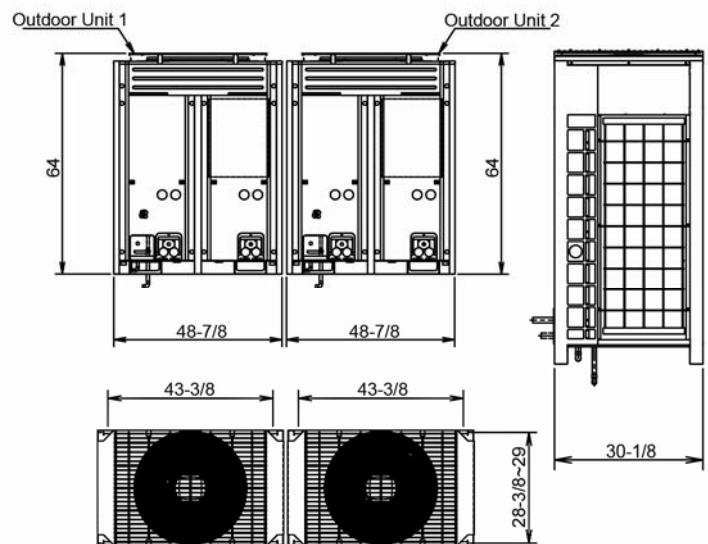
**Standard Features:**

- Six year compressor warranty
- One year limited labor warranty
- One year parts warranty
- Simultaneous operation of heating and cooling
- PE coated condenser coil to prevent corrosion
- VFD controlled outdoor motor fan
- Internal ground fault circuit breaker



**R-410A**

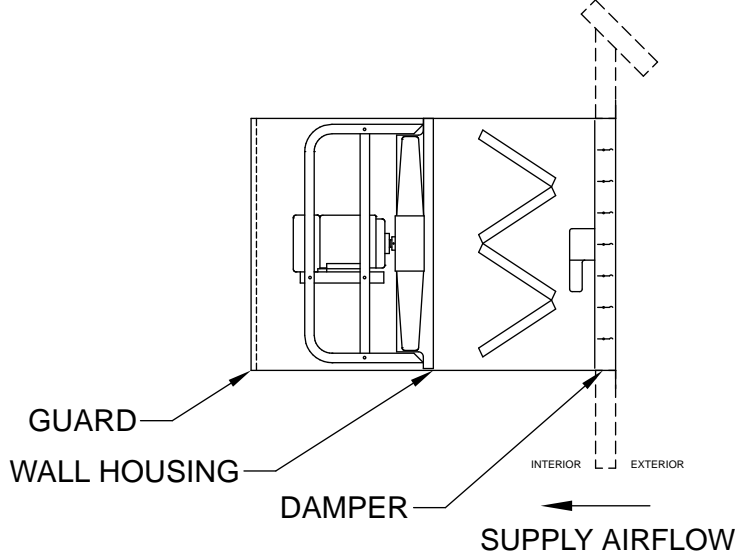
**INVERTER**



For further information about the installation allowances on manifolded systems, please refer to the Installation and Engineering Guides

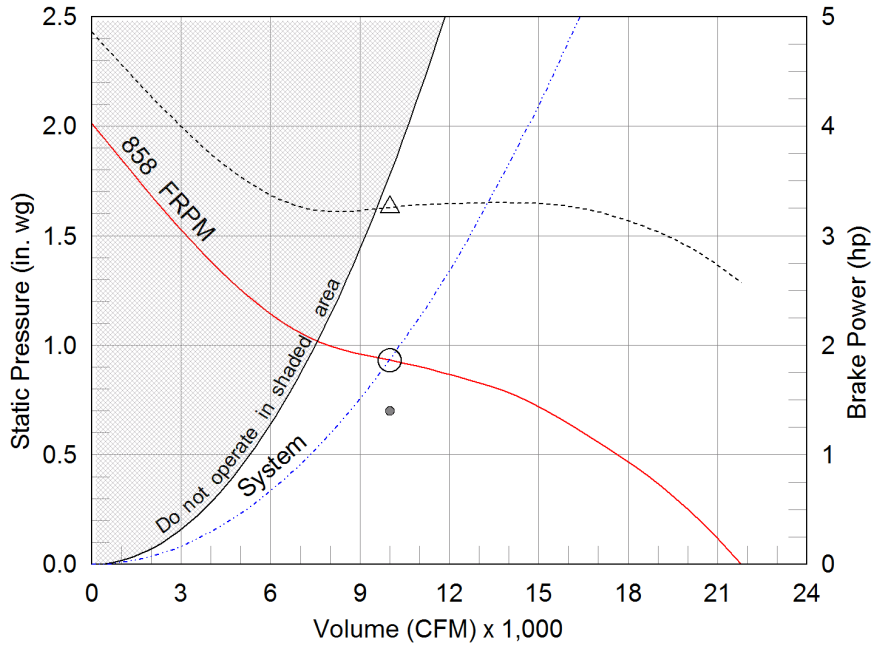
# Model: SS2-42-617-C30

Sidewall Direct Drive Fan  
Motor Access From Int. of Bldg.



Dimensional	
Quantity	1
Weight w/o Acc's (lb)	157
Weight w/ Acc's (lb)	544
Max T Motor Frame Size	256
Optional Damper (in.)	44 x 44
Wall Opening (in.)	51.75 x 51.75

Performance	
Requested Volume (CFM)	10,000
Actual Volume (CFM)	10,000
External SP (in. wg)	0.7
Total SP (in. wg)	0.932
Fan RPM	858
Operating Power (hp)	3.26
Elevation (ft)	26
Airstream Temp.(F)	70
Air Density (lb/ft3)	0.075
Tip Speed (ft/min)	9,438
Static Eff. (%)	45



Motor	
Motor Mounted	Yes
Size (hp)	3
Voltage/Cycle/Phase	460/60/3
Enclosure	ODP
Motor RPM	860
Windings	1

- △ Operating Bhp point
- Operating point at Total SP
- Operating point at External SP
- Fan curve
- - - System curve
- ..... Brake horsepower curve

External SP	0.7 in. wg
Filters	0.163 in. wg
Damper	0.024 in. wg
Wall Housing	0.045 in. wg
<b>Total SP</b>	<b>0.932 in. wg</b>

Note: Using External SP only, the fan would have been incorrectly selected at:  
762 RPM      2.29 hp

### Sound Power by Octave Band

Sound Data	62.5	125	250	500	1000	2000	4000	8000	LwA	dBA	Sones
Inlet	100	99	94	90	87	82	76	73	93	81	39

### Notes:

All dimensions shown are in units of in.  
\*Please consult factory for actual motor amp draw  
LwA - A weighted sound power level, based on ANSI S1.4  
dBA - A weighted sound pressure level, based on 11.5 dB attenuation per Octave band at 5 ft - dBA levels are not licensed by AMCA International  
Sones - calculated using AMCA 301 at 5 ft



## Model: SS2-42-617-C30

### Sidewall Direct Drive Fan

#### Standard Construction Features:

- Galvanized steel fan panel - Die formed, galvanized steel drive frame assembly
- Welded and painted steel propeller - Ball bearing motors - Corrosion resistant fasteners

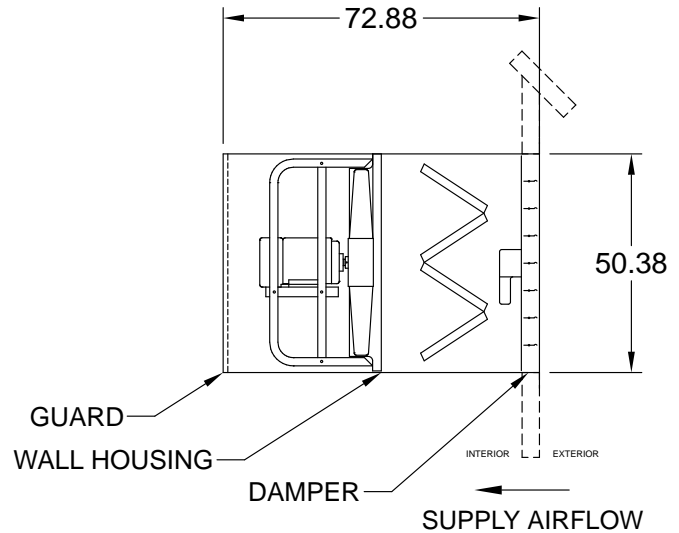
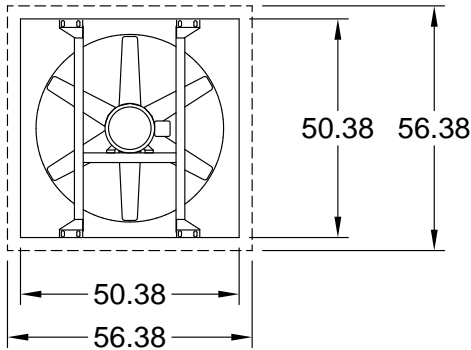
#### Selected Options & Accessories:

- Energy Efficient Motor - meets NEMA Table 12-11
- Motor VFD Rated without Shaft Grounding Protection
- Airflow Direction: Supply
- Damper Mounted, WD-220-PB-44X44, Coated
- Damper Actuator (MP-220A), 115 VAC Actuated
- Long Wall Hsg - Filtered Flush Exterior, w/ 2 in. Alum. Filters, w/ OSHA Grd., Ctd with Industrial Epoxy, Limestone
- Motor Access: From Int. of Bldg.
- Switch, NEMA-1, Toggle, Shipped with Unit
- Junction Box Mounted & Wired
- Aluminum Damper Guard
- 2-Way Diffuser w/Guard, Coated
- Coating Industrial Epoxy, Limestone, Fan & Attached Accessories
- Welded Drive Frame Construction
- Unit Warranty: 1 Yr (Standard)

# Assembly Drawing

Type: Sidewall Direct Drive Fan

DRAWING VIEWED FROM INTERIOR



END VIEW DIMENSIONS ARE FOR HOUSING NOT FAN PANEL  
WALL OPENING 51.75 SQ.  
MOTOR IS ACCESSIBLE FROM INTERIOR OF BUILDING  
THIS IS A SUPPLY FAN DUE TO MOTOR ORIENTATION  
THIS FAN HAS 6 BLADES

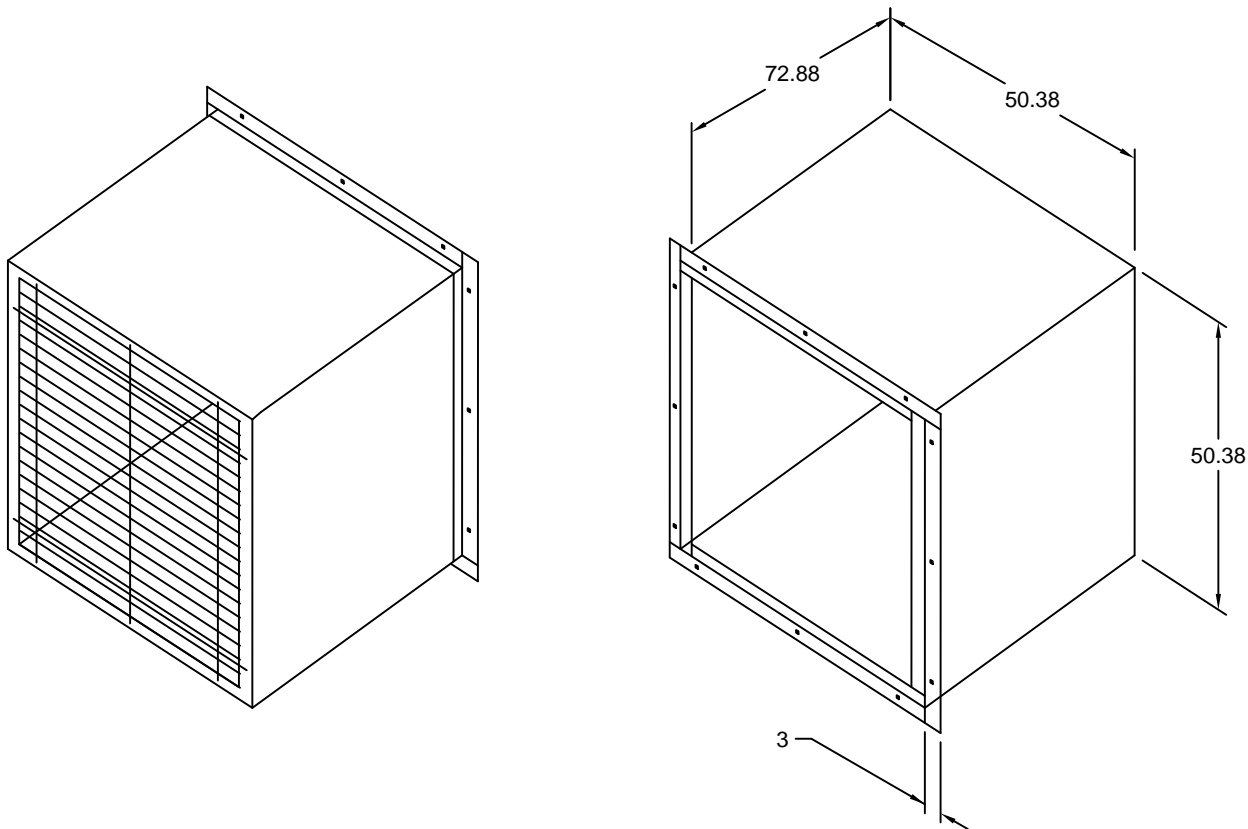
THIS FAN CAN POTENTIALLY CARRY RAIN OR SNOW INTO THE BUILDING

Notes: All dimensions shown are in units of in..

## Long Wall Housing

### Standard Construction Features:

- Galvanized steel construction - Heavy gauge mounting flanges - Pre-punched mounting holes - Inside flanges allow damper to be mounted - Overlapping weatherhood flange keeps rain out - OSHA Protective guard of welded steel wire completely protects the drive side of the wall housing.



Notes: All dimensions shown are in units of in.

## AMCA



AMCA Licensed for Sound and Air Performance Without Appurtenances (Accessories). Power rating (BHP/kW) does not include transmission losses.

Greenheck Fan Corporation certifies that the model shown herein is licensed to bear the AMCA Seal. The ratings shown are based on tests and procedures performed in accordance with AMCA Publication 211 and AMCA Publication 311 and comply with the requirements of the AMCA Certified Ratings Program. Performance certified is for installation type A: Free inlet, Free outlet. Power rating (BHP/kW) does not include transmission losses. Performance ratings do not include the effects of appurtenances (accessories). The sound ratings shown are loudness values in fan sones at 5 ft. (1.5 m) in a hemispherical free field calculated per AMCA Standard 301. Values shown are for installation type A: free inlet hemispherical sone levels. dBA levels are not licensed by AMCA International. The AMCA Certified Ratings Seal applies to sone ratings only.

The AMCA licensed air and/or sound performance data has been modified for installation, appurtenances or accessories, etc. not included in the certified data. The modified performance is not AMCA licensed but is provided to aid in selection and applications of the product.