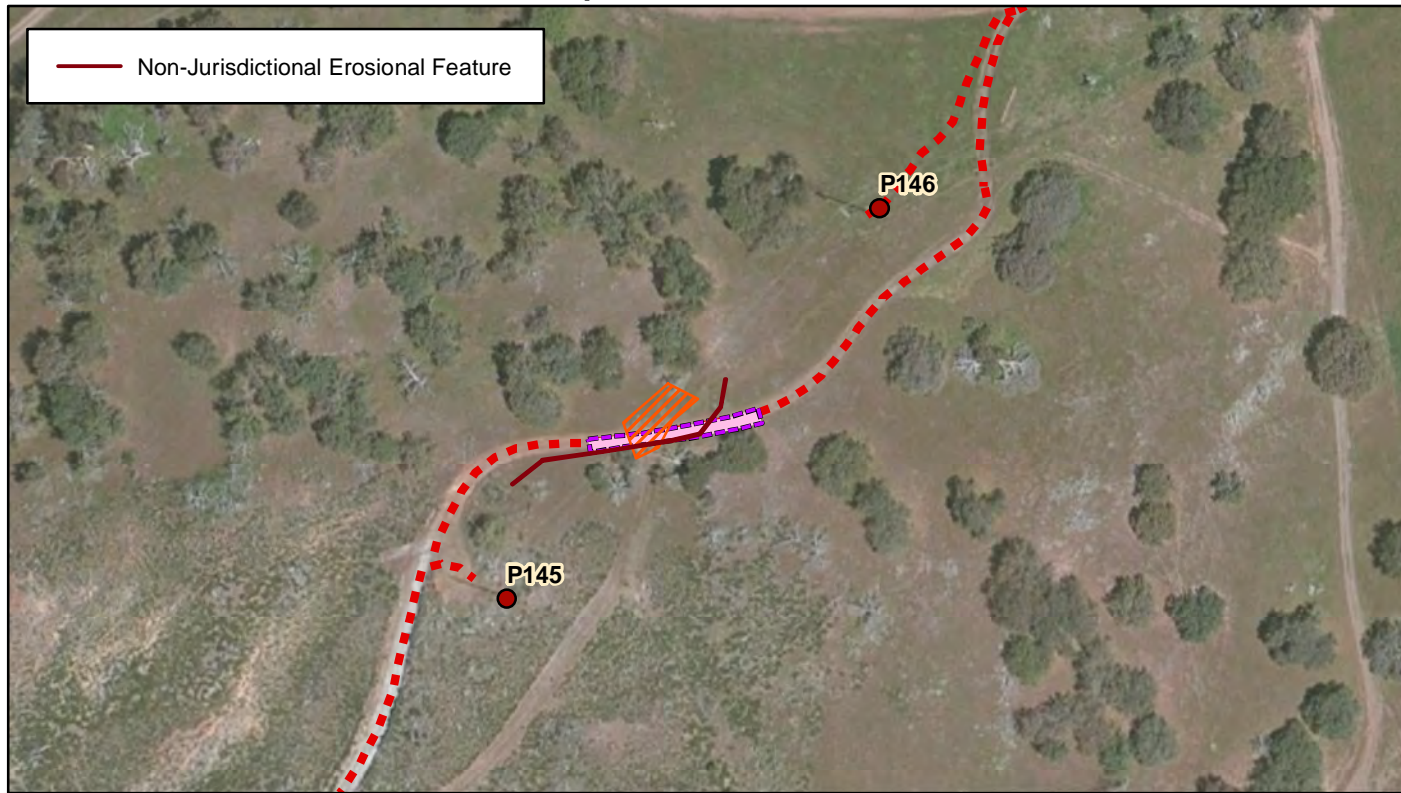
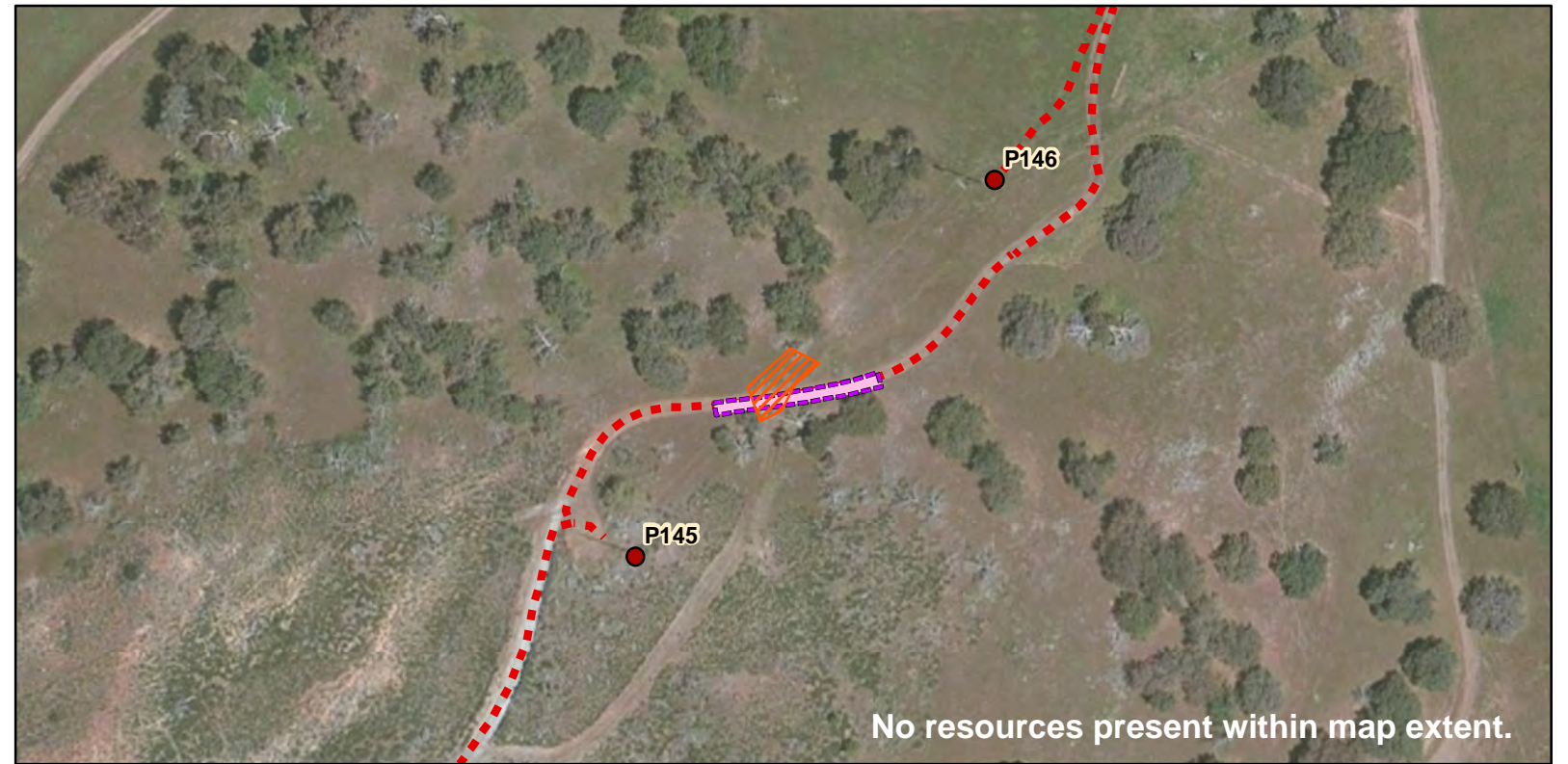


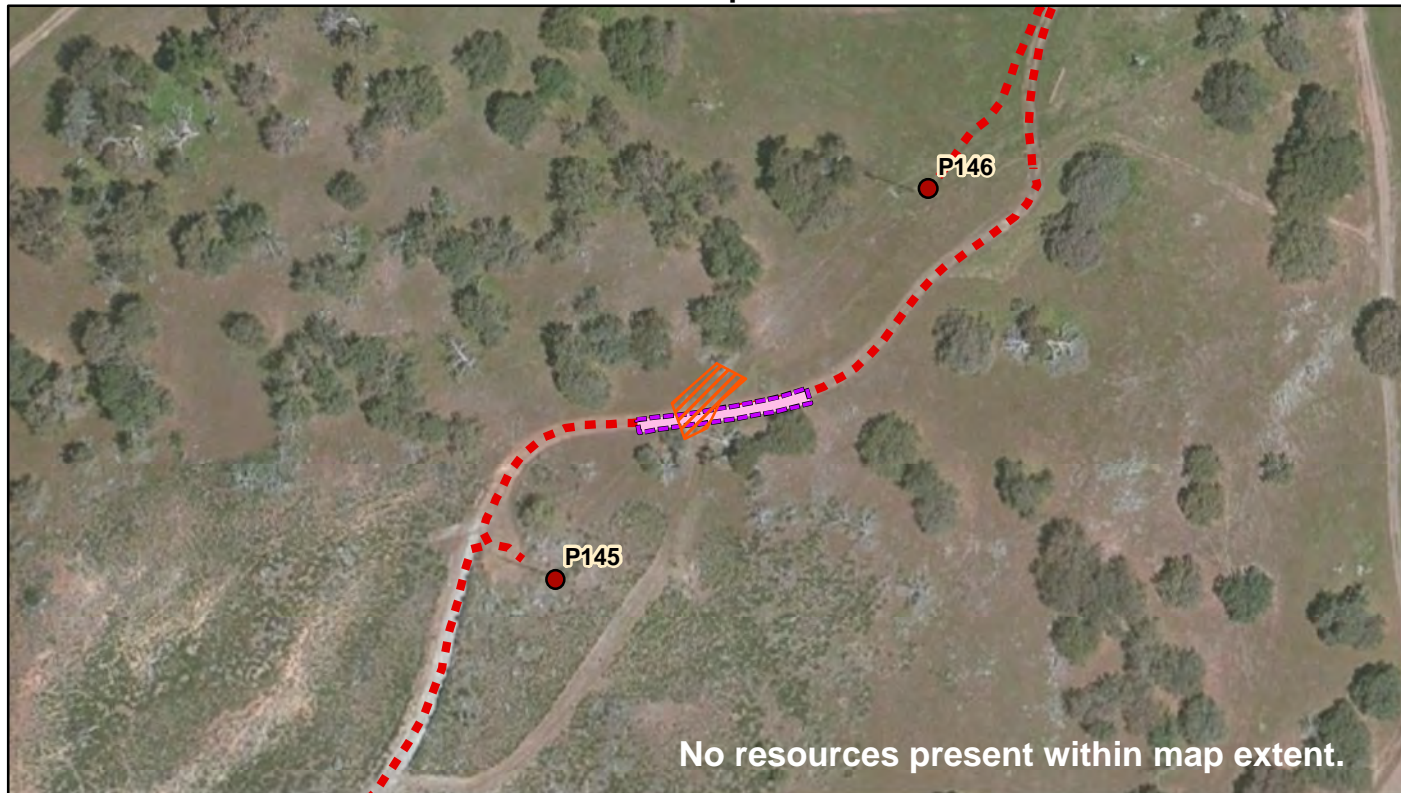
Aquatic Resources



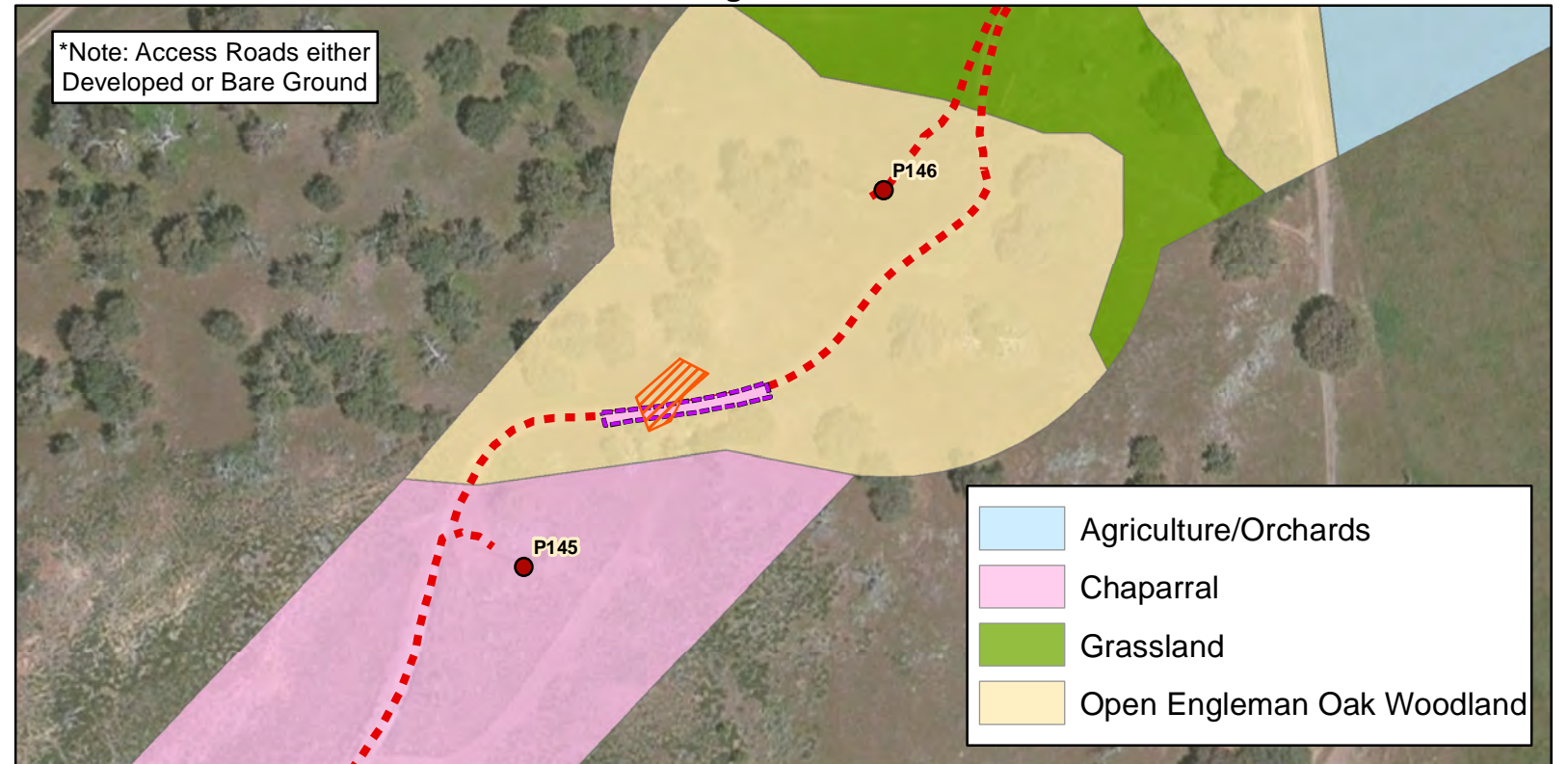
Cultural Resources



Sensitive Species



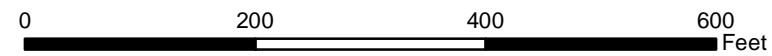
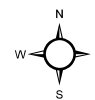
General Vegetation



Minor Project Refinement Request No. 14 (Stringing Site 18)

Attachment A: Resources Maps

Tie-Line 637 Wood-To-Steel Project



- Proposed Pole
- ▨ New Proposed Stringing Site 18
- - - Existing Access Road
- ▭ Original Stringing Site 18

Service Layer Credits: Source: Esri, DigitalGlobe, GeoEye, i-cubed, Earthstar Geographics, CNES/Airbus DS, USDA, USGS, AEX, Getmapping, Aerogrid, IGN, IGP,