

Lauren Coartney

From: Mark Hass <mahass@earthlink.net>
Sent: Friday, March 04, 2011 3:38 PM
To: ECOSUB; Wind Blm
Subject: Comments for submission
Attachments: Wind Farm Concerns 3+4+2011.doc; Bats Curtailment_2008_Final_Report.pdf; Wind FPL Carbon Offsets.bmp

Enclosed are my comments.
Thank You,

Mark Hass
701 kettner Blvd 68
San Diego, Ca 92101

This footnote confirms that this email message has been scanned by PineApp Mail-SeCure for the presence of malicious code, vandals & computer viruses.

Wind farm concerns submitted for discussion and review

From Mark Hass
701 Kettner Blvd 68
San Diego Ca 92101
Party/self

The EIS Environmental Impact Study cannot be performed without identifying the specific turbine that had been selected for the project. It is impossible. Each turbine has its own noise levels, blade radiuses, optimum turbine speed, optimum wind requirements, foundation requirements, effects on Doppler radar, communication interference, overall height with regards to aviation and bird safety, life of turbines and their reliability are different and decommissioning costs cannot be established. The Meg size of the project directly impacts the number of turbines needed with regards to the output of the turbine selected.

The study submitted does not address any of these concerns in sufficient detail with many false assumptions and flawed data. I call upon the county of San Diego and State of California to show goodwill and investigate the validity of the Draft EIR/EIS. If these projects proceed and it becomes apparent do diligences was not done, and the forthcoming evidence and studies are not reviewed, then I am sorry I put my life on the line and got shot at in the name of energy, in the Middle east.

Without the specific turbine identified, no noise study can be preformed to ensure compliance with noise codes. Setbacks from residents and farms cannot be established. Flicker effects cannot be assessed and minimized. Farm animals near turbines nationwide are experiencing increased rates of still birth rates. The study by HDR Engineering is tremendously flawed. Wind studies from actual 1.5 Meg sites are as much as 20-30 decibels higher than HDR predicts. HDR must submit their source for how they obtained their turbine dbl. For the turbines at the setbacks depicted in the study this is impossible to be accurate.

The noise level of the GE 1.5 Meg turbine at 1450 ft, midrange temperatures and humidity is in the high 60db low 70 dbl range. This is also at low range winds. This sound goes up steeply when winds increase and temperatures decrease. This is actual certified wind study data that I will submit, this must be reviewed by the county. The data will clearly show that the turbines will exceed county code.

SDGE must identify the suggested noise barriers and be specific as to type and location. A fund must be set up for the county, state and Feds to draw from to protect our property and assure these mitigation measures are met. The fund should be funded at estimates plus 20%. This will ensure any unforeseen issues that arise can and will be dealt with without hesitation.

There must be specific language to ensure all mitigation is performed and items like the exhaust silencers mentions are used

There are NO additional noise reduction measures available for turbines as suggested. If there were, the multitude of 1.5 Meg sites experiencing huge noise problems would have used them. HDR must identify these measures that are available in detail AND where they have been used successfully. Plus, why not be a good neighbor and use them anyway, and have the data included in their sound study? This should be easy for sound professionals.

The project cannot go on without the ascertaining the TRUE sound impact that will take place. Again, this information is readily available from actual studies performed at actual wind farm sites with the turbines suggested by SDGE, This is a simple exercise in do diligence by all parties. Believe me, the county needs to do its homework on this, because flawed studies like the HDR report, have caused MAJOR problems for county officials elsewhere in the country, for example in DeKalb County Illinois. I would mandate our county officials contact the officials in DeKalb and learn from their lesions learned the hard way.

Other equipment dbl estimate levels are may be understated. For instance a helicopter at 500 ft above downtown San Diego is well into the high 70db range. Jack hammers are in the high 90db range. I understand using a sound model like the one used from Boston is ok and probably quite accurate. Likewise, why not use a sound study at a 1.5 Meg wind farm from an equally certified sound engineer. I will submit one.

Sound information I provide is from a Larson-Davis sound meter model 812 with calibration model CAL200 used for calibration. This meter has been allowed in previous courts in San Diego and was the instrument that I used to obtained the readings to force NGR energy center to add sound attenuation to their Kettner site. I was trained by The Navy North Island Industrial Hygienist in the early 80s on sound studies and equipment and authored articles about aircraft noise. My reading for ambient noise in similar locations is somewhat lower.

The turbine must be matched to the available wind for peak performance. In many instances wind farms have been planned with the wrong turbines selected. For instance the GE 1.5 Meg turbine needs 13 kts of wind to ENTER its peak performance window. No where in southern California does this wind exist on a daily or even weekly basis. The 20% renewable energy goals are simply not achievable with wind power. Wind companies have teamed up with smoke and mirror companies that can amazingly turn your low wind area to a high wind area with the use of satellite technology. This of course cannot be done. Actual historic wind data is available and must be used. If it were used, there would be few turbines. The information from the SDGE MET towers must be provided for my review. Wind companies traditionally install MET towers to gather a MINIMUM. Of one years wind and weather data before planning a wind farm.

Different turbines have different impacts on wildlife. The wildlife that may be impacted must be identified and proper measures must be taken to minimize the threat. For instance the Altamont Pass wind farm got a break. Its turbines kill (over 70) Eagles and other birds of prey. At a presentation by K Tyrell of BHE Environmental, a leading wind farm engineering support company, she indicates that the American bald Eagle is a victim of wind farms, but that there are federal "take" permits available. One of the major concerns in San Diego County is our birds of prey and our Condor population. Turbines decimate wildlife. The nation's bats are extremely venerable. They are our insect and primary mosquito control. (Disease control) Can you say West Nile Virus? We must have our neighborhood experts from the San Diego Zoo and Wildlife Park weighing on this.

In fact turbine failures are very common and FPL Florida Power and Light states the danger of being around them. The blades explode and the turbines catch on fire. The National Renewable Energy Lab has selected the GE 1.5 Meg turbine and a Siemens turbine for research funded by the federal government. The purpose is to find a way to make the more reliable and safe. They document the GE turbines with a 5-7 year life.

I met with an engineer that works for the company that makes the blades for GE. He states GE, in a cost cutting measure has chosen a double mold system in blade manufacturing. This is ultimately what causes the failures. He went further to explain there is a superior method of one piece manufacturing that would completely eliminate blade failures. Turbines hate ice, snow and wind shear or a sudden change in wind direction.

The foundations of the turbines are very deep and require substantial concrete. If the foundation site develops problems, wind farms have been able to move the turbine site without notifying the FAA and Homeland Security. The wind companies, like FPL in their EIR stated that the massive amount of earth removed in excavating a foundation would ALL fit back in the hole. This is impossible and ended up not being the case. This is pure physics. Finding areas to haul the dirt and debris to is a major problem and does create huge environmental issues. The smoke and mirrors team was at it again on this one claiming new "compacting technology" eliminated this hazard. It did not.

Wind farms have an arrangement to circumnavigate FAA lighting requirements for tall structures. They either build the towers 10" than the requirements or they are allowed to place one light up for several towers. The hazards in both cases are severe and do open the government up to liability, not the wind farm.

Along the boarder the security of the USA is GREATLY compromised. This should raise every alarm in Washington. The US customs routinely fly low level helicopters and aircraft along the entire border. Their ability to freely patrol the boarder and rapidly respond to threats is paramount. The listening devises and other security measures deployed along our boarders will be rendered useless. And yes, terrorists and criminals operate across our boarders. Not to mention the danger to the illegal immigrants that would be transitioning the boarder around the turbines.

Remember turbines are dangerous. Many windmill sites are littered with shattered blades and gearboxes. Let the Border Pilots speak on this issue, not management. The great Admiral Halsey once said, and he was proven right, "let the men that will perform the job make the decision". Why would we want to turn down his advice?

In a time when concern for protecting our boarders is in the headlines daily, why do we allow this breach of security to take place? The BLM has much better property available in the state for turbines.

These areas are also known for recreational hiking. How will we protect these folks?

The other MAJOR concern is the close proximity of the turbines to our nation's military training airports and training areas, routinely used to train our military pilots. I have personally trained in these areas as a Naval Aviator. These areas must be kept clear of all hazards to aviation. The Navy literally flies from the ground up. Our pilots need to concentrate on honing their piloting skills. This is what makes them effective weapons and brings them home safe. The VERY LAST THING a pilot needs to do while managing his multi million dollar jet at mach speeds is the increased burden and responsibility of avoiding these turbines. ESPECIALLY WHILE HANDLING AN AIRCRAFT EMERGENCY! This is criminal to expose our young warriors to this avoidable severe hazard. They get enough danger in real combat! Let the pilots speak!

Doppler radar is greatly affected by turbines. There are many instances nationwide where local wind and storm information has been compromised. Over the air television and radio is greatly disrupted. It effectively removes the nearby population access to the USA Emergency Broadcast System. I thought the system was designed for all citizens to receive crucial national and local emergency information. Especially in the active earthquake and forest fire zones we live in. Let the firemen speak!

There has never been a property value agreement that has favored the residents near wind farms. Agreements that several have made have been not honored as is the case in DeKalb. There must be an open and fair dialogue about this.

I would suggest with all the complexities involved with the environmental and health issues surrounding wind farms, the BLM does not possess the knowledge and experience level required to provide a sound EIS that addresses all the concerns associated with wind farm placement. Wind farms are simply too new and the short and long-term impacts with all the known concerns are not completely known yet and the upmost cautions must be utilized. The USA is littered with examples of premature acceptance of the way we manage our land, and paying (or not being able to pay) the consequences later. Both in dollars and in lives. Just look at superfund sites!

A compromise must be reached with SDGE, (or any utility) The State of California, The US government, the Mexican government and the citizens effected, to pool their recourses to arrive at a meaningful EIS that promotes renewable energy,

but primarily protects the environment and the health and property of the citizens surrounding wind farms. There is no other right answer.

I would like to reserve the right to enter information to support the citizens of California during this review.

The major concerns again;

Noise and sound study

Flicker

Turbine location

National Security/boarder patrol concerns

Military and Customs pilot safety

Installation concerns/debris

Road new and old

Jobs, identify the jobs, be specific. No wind farm project has produced the job number promised. And nearly all are extremely part time

Land values

Animal safety/Eagles/Condors,

Decommissioning costs, there must be an escrow for this cost. FPL had mentioned 150k per turbine at one time.

Turbine reliability and safety

Aviation safety concerns/lighting and mapping. The pilots of the border patrol must testify as to the safety concerns that will be place in their office. One pilot told me “it is tough enough to fly around the mountains” while performing our mission.

Carbon Credits, give them to the state, and counties.

Taxes, be specific with numbers and where they will go.

Corporate/government landowner concerns/ business only, do not share other concerns

Wind studies

Turbine selected

Energy customers, power and credits must stay in the state. It is our 33% we are complying with.

We have already reduced our carbon footprint in the USA

Mark Hass

mahass@earthlink.net 619-985-5376

Effectiveness of Changing Wind Turbine Cut-in Speed to Reduce Bat Fatalities at Wind Facilities

2008 Annual Report



Edward B. Arnett and Michael Schirmacher, Bat Conservation International

**Manuela M. P. Huso
Oregon State University**

**John P. Hayes
University of Florida**

**Annual Report Prepared for the
Bats and Wind Energy Cooperative and the Pennsylvania Game Commission**

April 2009

REPORT CITATION

Arnett, E. B., M. Schirmacher, M. M. P. Huso, and J. P. Hayes. 2009. Effectiveness of changing wind turbine cut-in speed to reduce bat fatalities at wind facilities. An annual report submitted to the Bats and Wind Energy Cooperative. Bat Conservation International. Austin, Texas, USA.

ACKNOWLEDGMENTS

This study was conducted under the auspices of the Bats and Wind Energy Cooperative. We wish to thank the American Wind Energy Association (AWEA), Bat Conservation International (BCI), the National Renewable Energy Laboratory-Department of Energy (NREL), and the U.S. Fish and Wildlife Service (USFWS) for partnering to form the Bats and Wind Energy Cooperative (BWEC). Tom Gray (AWEA), Alex Hoar (USFWS), Bob Thresher (NREL), and Merlin Tuttle (BCI) provided oversight for the BWEC the project.

We wish to thank the U.S. Fish and Wildlife Service, donors to BCI, the National Renewable Energy Lab, and Iberdrola Renewables for funding the curtailment study at the Casselman Wind Project in 2008. We are indebted to Holly McCready, Jeff Miller, Erica LaMore, Mario Desilva, Brian Farless, Paula Shover, Ryan Claire, and Ann Zurbriggen for their dedication in the field and collecting and managing the data throughout the study. We thank Iberdrola Renewables employees, in particular Andy Linehan, Sam Enfield, Jason Bell, Scott McDonald, Dave DeCaro, and Chris Long, for their support and efforts to make this study happen and run smoothly. Zac Wilson (BCI) conducted all GIS analysis for the study. Finally, we appreciate the support and hospitality of the private landowners that graciously allowed access to their lands for this study; they should be commended for supporting proactive research for solving wildlife and wind energy issues.



EXECUTIVE SUMMARY

We implemented the first U.S.-based experiment on the effectiveness of changing turbine cut-in speed on reducing bat fatality at wind turbines at the Casselman Wind Project in Somerset County, Pennsylvania. Our objectives were to 1) determine the difference in bat fatalities at turbines with different cut-in-speeds relative to fully operational turbines, and 2) determine the economic costs of the experiment and estimated costs for the entire project area under different curtailment prescriptions and timeframes.

Twelve turbines of the 23 turbines at the site were randomly selected for the experiment and we employed three treatments at each turbine with four replicates on each night of the experiment: 1) fully operational, 2) cut-in speed at 5.0 m/s (C5 turbines), and 3) cut-in speed at 6.5 m/s (C6 turbines). We used a completely randomized design and treatments were randomly assigned to turbines each night of the experiment, with the night when treatments were applied being the experimental unit. We conducted daily searches at the 12 turbines from 26 July to 10 October 2008. During this same period, we also conducted daily searches at 10 different turbines that were part of a complementary study to determine if activity data collected prior to construction with acoustic detectors can be used to predict post-construction fatalities, and to meet permitting requirements of the Pennsylvania Game Commission's (PGC) voluntary agreement for wind energy (herein referred to as "PGC" turbines). These 10 turbines formed an alternative 'control' to the curtailed turbines. We performed two different analyses to evaluate the effectiveness of changing turbine cut-in speed to reduce bat fatalities; for one we used 12 turbines to determine differences in fatality between curtailment levels and for another using 22 turbines to determine differences in fatalities between curtailment and fully operational turbines. The experimental unit in the first analysis was the turbine-night and turbines were considered a random blocking factor within which all treatments were applied. In our first analysis, the total number of fatalities estimated to have been killed the previous night, herein referred to as "fresh" fatalities, in each treatment at each turbine was modeled as a Poisson random variable with an offset of the number of days a treatment occurred within a turbine (due to the slight imbalance of the design). For our second analysis, the turbine was the experimental unit, with 12 turbines receiving the curtailment treatment, 10 the control (fully operational at all times). We used all carcasses found at a turbine to estimate the total number of bat fatalities that occurred at each turbine between 26 July and 10 October 2008 and compared fatalities using one-way ANOVA.

A total of 32 fresh bat fatalities were found at the 12 treatment turbines between 26 July and 10 October 2008. Each treatment was implemented at each turbine for at least 25 nights, with one treatment at each turbine implemented for 26 nights. At least one fresh fatality was found at each turbine, and 10 of the 12 turbines had at least 1 fatality during a fully operational night, indicating that fatalities did not occur disproportionately at only some turbines, but were well distributed among all turbines. There was strong evidence that the estimated number of fatalities over 25–26 nights differed among turbine treatments ($F_{2,33} = 8.99$, $p = 0.008$). There was no difference between the number of fatalities for C5 and C6 turbines ($\chi_1^2 = 0.83$, $p = 0.3625$, 95% CI: 0.11, 2.22). Total fatalities at fully operational turbines were estimated to be 5.4 times greater on average than at curtailed turbines (C5 and C6 combined; $\chi_1^2 = 14.63$, $p = 0.001$, 95% CI: 2.28, 12.89); in other words, 73% (95% CI: 53–87%) of all fatalities at curtailment turbines likely occurred when the turbines were fully operational.

Estimated total bat fatalities per turbine (i.e., all carcasses found and corrected for field bias) were 1.23–4.68 times greater (mean = 2.34) at PGC turbines relative to curtailed turbines, further supporting the contention that reducing operational hours during low wind periods reduces bat fatalities. This is a conservative estimate of the difference because treatment turbines were fully operational one-third of the time during the study.

The lost power output resulting from the experiment amounted to approximately 2% of total project output during the 76-day study period for the 12 turbines. Hypothetically, if the experimental changes in cut-in speed had been applied to all 23 turbines at the Casselman site for the study period (0.5 hour before sunset to 0.5 hour after sunrise for the 76 days we studied), the 5.0 m/s curtailment used would have resulted in lost output equaling 3% of output during the study period and only 0.3 % of total annual output. If the 6.5 m/s curtailment were applied to all 23 turbines during the study period, the lost output would have amounted to 11% of total output for the period and 1% of total annual output. In addition to the lost power revenues, the company also incurred costs for staff time to set up the processes and controls and to implement the curtailment from the company's offsite 24-hour operations center.

Our study is the first U.S.-based experiment of changing cut-in speed to reduce bat fatalities, and only the third we are aware of anywhere in the world. We demonstrated nightly reductions in bat fatality ranging from 53–87% with marginal annual power loss. Given the magnitude and extent of bat fatalities worldwide, the conservation implications of our findings are critically important. However, more studies are needed to test changes in turbine cut-in speed among different sizes and types of turbines, wind regimes, and habitat conditions to fully evaluate the general effectiveness of this mitigation strategy. We plan to initiate a second year of post-construction fatality searches at the PGC turbines beginning 1 April and continuing through 15 November 2009 and will initiate searches for the curtailment study beginning in mid- late July and continuing through the second week of October in 2009 at the Casselman facility.



Photo by: E. B. Arnett, Bat Conservation International.

INTRODUCTION

Although wind-generated electricity is renewable and generally considered environmentally clean, fatalities of bats and birds have been recorded at wind facilities worldwide (Erickson et al. 2002, Durr and Bach 2004, Kunz et al. 2007, Arnett et al. 2008, Baerwald 2008). Bat fatalities at wind energy facilities generally received little attention in North America until 2003 when 1,400–4,000 bats were estimated to have been killed at the Mountaineer Wind Energy Center in West Virginia (Kerns and Kerlinger 2004). High bat fatalities continued at the Mountaineer facility in 2004 (Arnett 2005) and large kills also have been reported at facilities in Pennsylvania (Arnett 2005) and Tennessee (Fiedler 2004, Fiedler et al. 2007). These fatalities raise concerns about potential impacts on bat populations at a time when many species of bats are known or suspected to be in decline (Racey and Entwistle 2003, Winhold et al. 2008) and extensive planning and development of both onshore and offshore wind energy development is increasing worldwide (EIA 2008, Arnett et al. 2007a, Kunz et al. 2007).

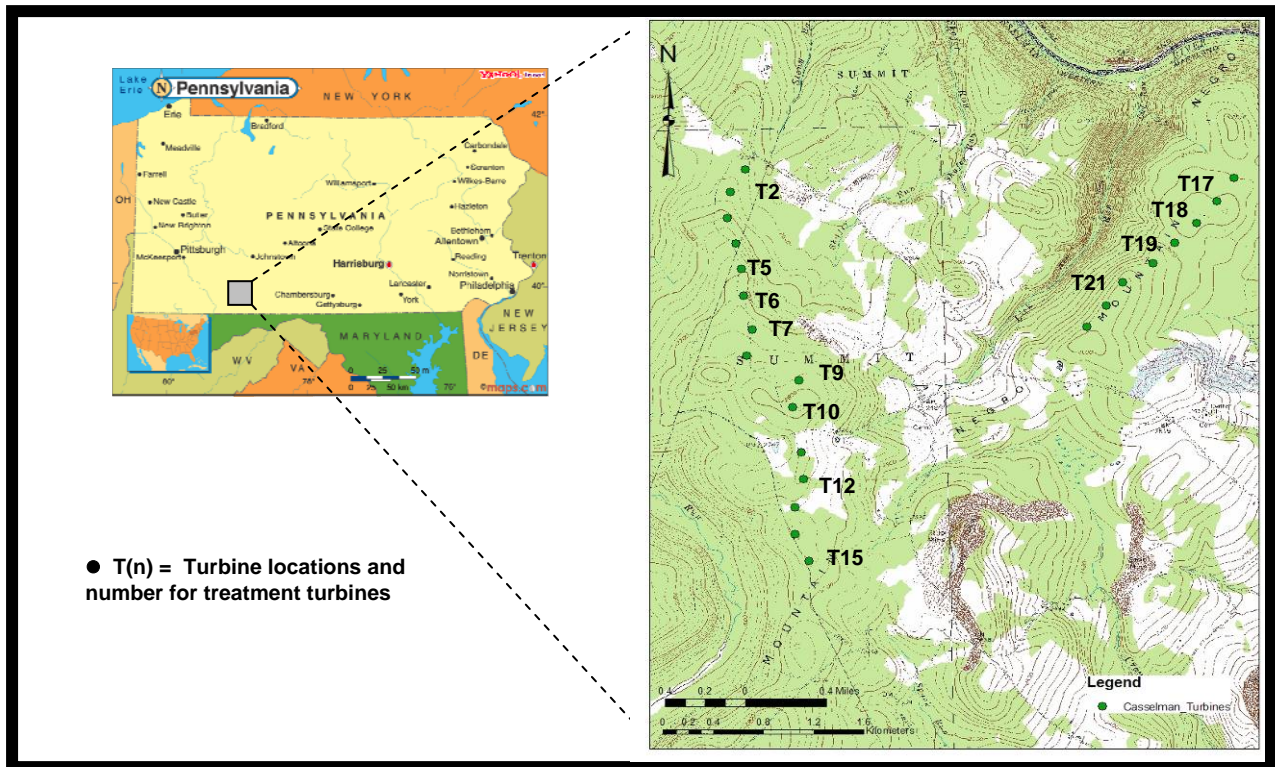
Data previously collected at operating wind energy facilities indicate that a substantial portion of the bat fatalities occurs during relatively low-wind conditions over a relatively short period of time during the summer-fall bat migration period (Arnett et al. 2008). Some curtailment of turbine operations during these conditions and during this period of time has been proposed as a possible means of reducing impacts to bats (Kunz et al. 2007, Arnett et al. 2008). Indeed, recent results from studies in Canada (Baerwald et al. 2009) and in Germany (O. Behr, University of Erlangen, unpublished data) indicate that changing turbine “cut-in speed” (i.e., wind speed at which wind generated electricity enters the power grid) from the normal (usually 3.5–4.0 m/s on modern turbines) to 5.5 m/s resulted in at least a 50% reduction in bat fatalities compared to normally operating turbines. Altering turbine operations even on a partial, limited-term basis potentially poses operational and financial difficulties for project operators, but this mitigation may ultimately prove sufficiently feasible and effective at reducing impacts to bats at minimal costs to companies that operate wind energy facilities.

We implemented the first U.S.-based experiment on the effectiveness of operational curtailment on reducing bat fatality at wind turbines. Our objectives were to: 1) determine the difference in bat fatality at turbines with different changes in the cut-in-speed relative to fully operational turbines, and 2) determine the economic costs of the experiment and estimated costs for the entire project area under different curtailment prescriptions and timeframes. This report presents our experimental design, methods, and first year results of the study.

STUDY AREA

The Casselman Wind Project is located near the town of Rockwood in Somerset County, Pennsylvania (Figure 1). The facility lies within the Appalachian mixed mesophytic forests ecoregion that encompasses the moist broadleaf forests that cover the plateaus and rolling hills west of the Appalachian Mountains (Brown and Brown 1972, Strausbaugh and Core 1978). Turbines at the Casselman facility are GE SLE 1.5 MW turbines with a 77 m rotor diameter, 4,657 m² rotor-swept area, 80 m hub height, variable rotor speeds from 12–20 RPMs, and cut-in speed of 3.5 m/s

Figure 1. Location of the Casselman Wind Project study area in Somerset County in south-central Pennsylvania, and locations of 23 turbines at the facility. Curtailment treatment turbines have numbers next to them and no searches were performed at turbine number 22.



(http://www.gepower.com/prod_serv/products/wind_turbines/en/downloads/ge_15_brochure.pdf).

There are two “strings” of turbines at the Casselman site. The western string has 15 turbines and is mostly forested (herein referred to as the “forested ridge”; Figure 1). Eleven of the 15 turbines in this string occur in relatively dense, second-growth deciduous hardwood forest with a canopy height generally ranging from 15–20 m; 3 of the 15 turbines in this string occur in open hay pasture near second-growth forest and one occurs in a stand of young (<10 years old) regenerating forest. The eastern string has 8 turbines (herein referred to as “mine ridge”; Figure 1). All turbines in this string occur in open grassland reclaimed after strip mining for coal.

EXPERIMENTAL DESIGN and HYPOTHESES

Twelve turbines were used for the operational curtailment experiment and we employed three turbine treatments with four replicates of each treatment on each night of the experiment: 1) fully operational, 2) cut-in speed at 5.0 m/s, and 3) cut-in speed at 6.5 m/s. We used a randomized block design (Hurlbert 1984) and treatments were randomly assigned to turbines each night of the experiment, with the night when treatments were applied being the experimental unit. Randomization was constrained so that on each night, each treatment was assigned to 4 turbines and over the course of 15 nights, each treatment occurred 5 times at each

turbine, in random order. Randomization was further constrained so that each of the three treatments was assigned to at least one turbine on the mine side of the site. There was a slight imbalance in the design because the study was run for 76 rather than 75 nights. Each treatment was assigned to each turbine for 25 nights, with each turbine receiving one additional treatment for one night.

On any given night, there was little variation in the wind speed among turbines (M. Huso, unpublished data), so we assumed that wind speeds were the same at all turbines on any night. The GE 1.5 MW turbines used in this experiment generally do not rotate at low wind speeds and “feather” when winds are <3.5 m/s (i.e., turbine blades are pitched parallel with the wind and free-wheel at very low rotation rates). Thus, the actual application of the curtailment treatment was dependent on the ambient wind speed on each night. There were 4 possible levels of ambient wind speed: <3.5 m/s, 3.5–5.0 m/s, 5.0–6.5 m/s, >6.5 m/s. Table 1 presents conditions of turbines under each of these treatments and wind speeds. When wind speeds were <3.5 or >6.5 m/s, all turbines were in the same operational condition and no curtailment treatments were in effect for those times; only when wind speeds were between 3.5 and 6.5 m/s were any treatments actually effective. When wind speeds were low, bat activity was expected to be high (Table 2; e.g., Arnett et al. 2006, 2007b), and when winds were <3.5 m/s none of the turbines were expected to rotate so we expected no fatalities during these periods at any of the treated turbines because all turbines were feathered below the cut-in speed (Table 2). When wind speeds were >6.5 m/s, bat activity was expected to be low (e.g., Arnett et al. 2006, 2007b) and all turbines were rotating so we expected few fatalities during these nights as well, and hypothesized there would be no differences among treatments (Table 2). When wind speeds were 3.5–5.0 m/s, bat activity was expected to be moderate to high and turbines with two different feathering treatments were not rotating, so we expected no fatalities at these turbines, but potentially high fatalities at the unfeathered, fully operational turbines under these wind conditions. Finally, when wind speeds were 5–6.5 m/s, we expected bat activity to be moderate to low, turbines assigned the 6.5 m/s treatment were not rotating, and we expected no fatalities at these turbines and moderate to low fatalities at the unfeathered turbines. However, wind speed varied throughout the night changing the effective treatment application throughout the night. In addition, fatalities were only observed at the end of the night and it was impossible to determine when and under exactly what conditions of wind speed when a fatality occurred. Our design actively accounted for this effect by maintaining balance (4 replicates of each treatment on each night), and reassigning treatment to turbines each night. Also, the measure of fatality for a treatment was the sum of all fatalities found at a given turbine following a particular treatment assignment, thereby evenly distributing the effect of varying wind speed within a night and among nights across all turbines and treatments in the study.

FIELD METHODS

Delineation of Carcass Search Plots and Habitat Mapping

We attempted to delineate a rectangular plot that is 126 m east-west by 120 m north-south (60 m radius from the turbine mast in any direction; 15,120 m² total area) centered on each turbine

Table 1. Possible turbine conditions (“feathered” or “rotating”) under different treatments and wind conditions at the Casselman Wind Project in Somerset County, Pennsylvania. Under the treatment condition when wind is <3.5 m/s, we expected all turbines to be feathered with no rotation.

Treatment	Wind Speed (m/s)			
	< 3.5	3.5–5.0	5.1–6.5	> 6.5
5.0 m/s	Feathered/	Feathered/	No feathering/	No feathering/
	No rotation	No rotation	Full rotation	Full rotation
6.5 m/s	Feathered/	Feathered/	Feathered/	No feathering/
	No rotation	No rotation	No rotation	Full rotation
Fully Operational	Feathered/	No feathering/	No feathering/	No feathering/
	No rotation	Full rotation	Full rotation	Full rotation

Table 2. Predicted bat activity levels under different treatments and wind conditions (based on analyses in Arnett et al. 2006, 2007b) and predicted fatality levels at the Casselman Wind Project in Somerset County, Pennsylvania.

Treatment		Wind Speed (m/s)			
		< 3.5	3.5–5.0	5.1–6.5	> 6.5
5.0 m/s	Activity	High	Moderate	Moderate	Low
	Fatality	None	None	Moderate	Low
6.5 m/s	Activity	High	Moderate	Moderate	Low
	Fatality	None	None	None	Low
Fully Operational					
	Activity	High	Moderate	Moderate	Low
	Fatality	None	High	Moderate	Low

sampled; this area represents the maximum possible search area for this study [see Figure 2 for an example]). Transects were set 6 m apart within each plot and observers searched 3 m on each side of the transect line; thus, the maximum plot in the east-west direction could be up to 126 m wide. However, dense vegetation and the area cleared of forest at this facility was highly varied and, thus, we eliminated unsearchable habitat (e.g., forest, tall and dense grassland) and usually did not search the entire possible maximum area. We used a global positioning system (GPS) to map the actual area searched at each turbine (see Figure 2 for an example, and Appendix 1 for plot maps). The density-weighted proportion of area searched was used to standardize results and adjust fatality estimates (see methods below). The number of transect lines and length of each line was recorded for each plot and habitat in each plot mapped with a GPS unit. We recorded the percent ground cover, height of ground cover (low [<10 cm], medium [11–50 cm], high [>50 cm]), type of habitat (vegetation, brush pile, boulder, etc), and the presence of extreme slope and collapsed these habitat characteristics into visibility classes that reflect their combined influence on carcass detectability (Table 3; following PGC 2007).

Fatality Searches

We conducted daily searches at 12 of the 23 turbines (2, 5, 6, 7, 9, 10, 12, 15, 17, 18, 19, 21; Figure 1) from 26 July to 10 October 2008. During this same period, we also conducted daily searches at 10 different turbines (1, 3, 4, 8, 11, 13, 14, 16, 20, 23; Figure 1) as part of a different study effort to determine if activity data collected prior to construction with acoustic detectors can predict post-construction fatalities (Arnett et al. 2006, 2009), and to meet permitting requirements of the Pennsylvania Game Commission's (PGC) voluntary agreement for wind energy (PGC 2007). These 10 turbines, herein referred to as "PGC" turbines, were selected because they had multiple years of acoustic data previously collected from 2005–2007 to be correlated with turbine-specific fatality data in the future (Arnett et al. 2006). We then randomly selected the 12 turbines listed above (of the remaining 13 turbines) for the curtailment study; no searches were conducted at turbine 22.

Searchers walked at a rate of approximately 10–20 m/min. along each transect searching both sides out to 3 m on each side for casualties. Searches were abandoned only if severe or otherwise unsafe weather (e.g., heavy rain, lightning) conditions were present and searches were resumed that day if weather conditions permitted. Searches commenced at sunrise and all turbines were searched within 8 hr after sunrise. We recorded date, start time, end time, observer, and weather data for each search at turbines. When a dead bat or bird was found, the searcher placed a flag near the carcass and continued the search. After searching the entire plot, the searcher returned to each carcass and recorded information on date, time found, species, sex and age (where possible), observer name, identification number of carcass, turbine number, perpendicular distance from the transect line to the carcass, distance from turbine, azimuth from turbine, habitat surrounding carcass, condition of carcass (entire, partial, scavenged), and estimated time of death (e.g., ≤ 1 day, 2 days, etc.). The field crew leader (M. Schirmacher) confirmed all species identifications at the end of each day. Disposable nitrile surgical gloves or inverted plastic bags were used to handle all carcasses to reduce possible human scent bias for carcasses later used in scavenger removal trials. Carcasses were placed in a plastic bag and labeled. Fresh carcasses, those determined to have been killed the night immediately before a

Figure 2. Sample carcass search plot at a wind turbine depicting the maximum plot size of 126 m east-west and 120 m north-south, 6 m wide transect lines (searched 3 m on each side), unsearchable area (black), and area encompassed by easy (white), moderate (light tan), difficult (dark tan), and very difficult (brown) visibility habitat.



Table 3. Habitat visibility classes used during this study (following PGC 2007). Data for Classes 3 and 4 were combined during our final analyses.

% Vegetative Cover	Vegetation Height	Visibility Class
≥90% bare ground	≤15 cm tall	Class 1 (Easy)
≥25% bare ground	≤15 cm tall	Class 2 (Moderate)
≤25% bare ground	≤25% > 30 cm tall	Class 3 (Difficult)
Little or no bare ground	≥25% > 30 cm tall	Class 4 (Very Difficult)

search, were redistributed at random points on the same day for searcher efficiency and scavenging trials.

Field Bias Trials

Searcher efficiency and removal of carcasses by scavengers was quantified to adjust the estimate of total bat fatalities for detection bias. We conducted bias trials throughout the entire study period and searchers were never aware which turbines were used or the number of carcasses placed beneath those turbines during trials. Prior to the study’s inception, we used EXCEL to generate a list of random turbine numbers and random azimuths and distances (m) from turbines for placement of each bat used in bias trials.

We used only fresh killed bats for searcher efficiency and carcass removal trials during this study. At the end of each day’s search, the field crew leader gathered all bats and then redistributed only fresh bats at predetermined random points within any given turbine’s searchable area. Data recorded for each trial carcass prior to placement included date of placement, species, turbine number, distance and direction from turbine, and visibility class surrounding the carcass. We attempted to distribute trial bats equally among the different visibility classes throughout the study period, and succeeded in distributing roughly one-third of all trial bats in each visibility class (easy, moderate, and difficult [difficult and very difficult were combined]). We attempted to avoid “over-seeding” any one turbine with carcasses by placing no more than 4 carcasses at any one time at a given turbine.

Because we used fresh bats for searcher efficiency trials and carcass removal trials simultaneously, we did not mark bats with tape or some other previously used methods (see Kerns et al. 2005) that could impart human or other scents on trial bat carcasses. Rather, we removed an upper canine tooth from each trial bat so as to distinguish them from other fatalities landing nearby

or if scavengers pulled the trial bat away from its original random location. Each trial bat was left in place and checked daily by the field crew leader or a searcher not involved with the bias trials; thus, trial bats were available and could be found by searchers on consecutive days during daily searches unless that were previously removed by a scavenger. We recorded the day that each bat was found by a searcher, at which time the carcass remained in the scavenger removal trial. If, however, a carcass was removed by a scavenger before detection by a searcher, it was removed from the searcher efficiency trial and used only in the removal data set. When a bat carcass was found, the searcher inspected the canine teeth to determine if a bias trial carcass had been found. If so, the searcher contacted the field crew leader and the bat was left in place for the carcass removal trial. Carcasses were left in place until removed by a scavenger or they decomposed to a point beyond recognition, at which time the number of days after placement was recorded.

ANALYTICAL METHODS

Comparison of Treatments

The experimental unit in the first analysis was the turbine-night and turbines were considered a random blocking factor. The total number of fatalities estimated to have been killed the previous night, herein referred to as “fresh” fatalities, in each treatment at each turbine was modeled as a Poisson random variable with an offset of the number of days a treatment occurred within a turbine (due to the slight imbalance of the design). These data were fit to a Generalized Linear Mixed Model using PROC GLIMMIX in SAS v9.1 (SAS Institute 2007) with turbine as the blocking factor. The block effect was found to be negligible and results were almost identical when the data were fit to a simple log-linear model.

Comparison of PGC and Curtailment Turbine Bat Fatalities

For our second analysis, the turbine was the experimental unit, with 12 turbines receiving the curtailment treatment, 10 the control (fully operational at all times). We used all carcasses found at a turbine to estimate the total number of bat fatalities that occurred at each turbine between 26 July and 10 October 2008. We compared fatalities at PGC with curtailment turbines using one-way analysis of variance with each turbine as the experimental unit and \log_e (estimated total fatalities) as the response (SAS Institute 2007).

Carcass persistence/removal. Estimates of the probability that a carcass was not removed in the interval between searches were used to adjust carcass counts for removal bias. Removal includes removal by predation, scavenging, wind or water, or decomposition beyond recognition. In most fatality monitoring efforts, it is assumed that carcass removal occurs at a constant rate that is not dependent on the time since death; this simplifying assumption allows us to estimate fatality when search intervals exceed one day. The length of time a carcass remains on the study area before it is removed is typically modeled as an exponentially distributed random variable. The probability that a carcass is not removed during an interval of length I can be approximated as $r_j = \hat{t}_j(1 - \exp(-I_{ij} / \hat{t}_j)) / I_{ij}$, the average probability of persisting given its death might have occurred at any time during the interval. Data from 114 bat carcasses used in removal trials were fit to an interval-censored parametric failure time model, with carcass

persistence time modeled as a function of visibility class. We used an alpha of 0.05 to determine if there was a statistically significant effect among visibility classes.

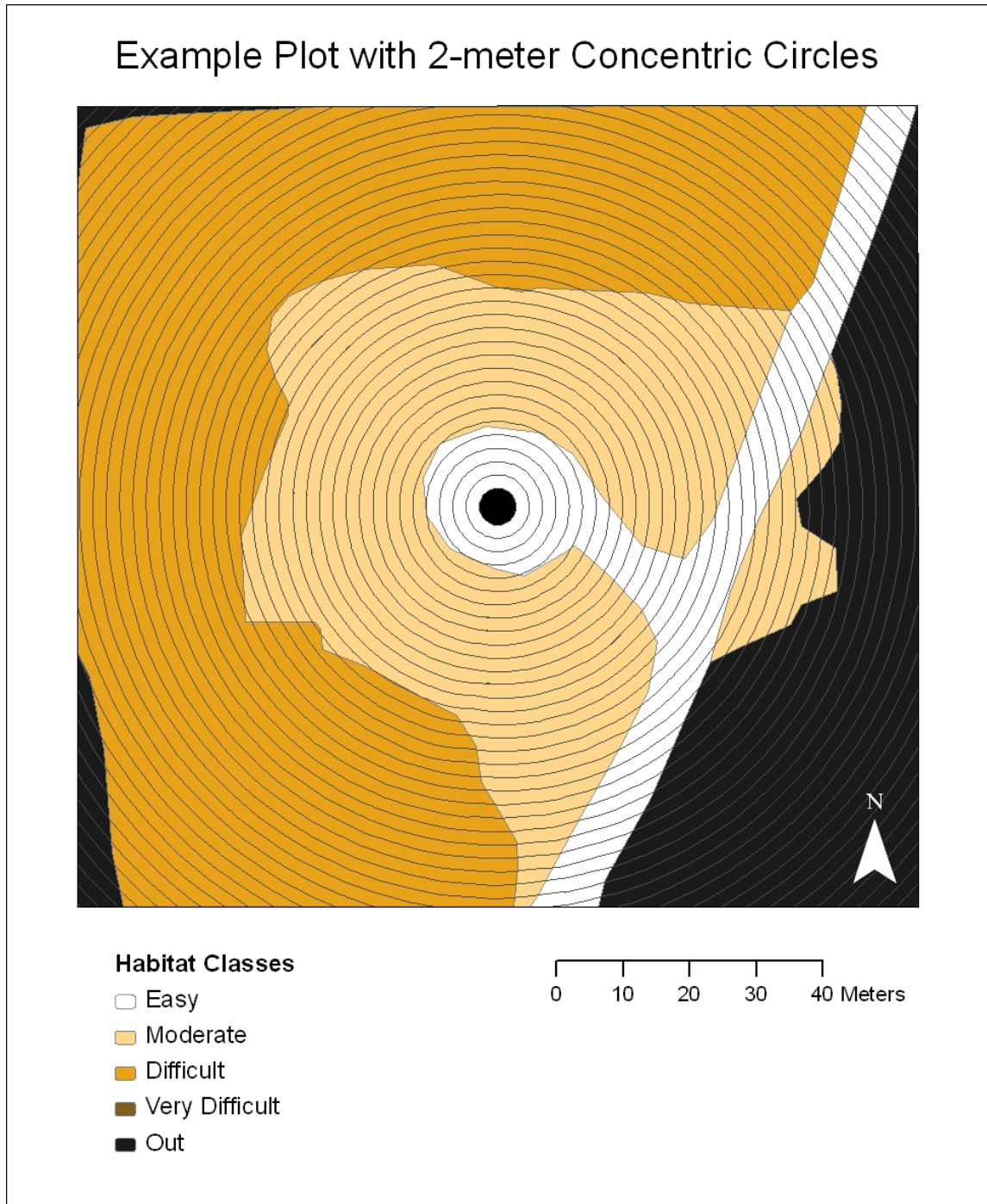
Searcher efficiency. Estimates of the probability that a carcass will be detected by an observer during a search (searcher efficiency) were used to adjust carcass counts for observer bias. Failure of an observer to detect a carcass on a search plot may be due to its size, color, or time since death, as well as conditions in its immediate vicinity (e.g., vegetation density, shade). In most fatality monitoring efforts, because we cannot measure time since death, it is assumed that a carcass' observability was constant over the period of the search interval. In this study, searches were conducted daily and carcass persistence times were long, giving a substantial opportunity for a searcher to detect a carcass that was missed on a previous search. Carcasses used in searcher efficiency trials were placed on search plots and monitored for 20 days. The day on which the carcass was either observed or removed by a scavenger was noted. Of the 100 carcasses placed in multi-day searcher efficiency trials, 4 had no visibility class recorded (2 of these had no species ID so could not be identified as bird or bat), leaving 96, 83 of which were bats, 13 were birds. Of the 83 bats, 4 were removed by scavengers before the searches took place, leaving 79. Of these, 70 were either seen or persisted beyond 7 days and were included in estimates of searcher efficiency rates. We fit searcher efficiency trial carcass data to a logistic regression model with odds of observing a carcass throughout the study period, given that it persisted, modeled as a function of visibility class. We used an alpha of 0.10 to determine if there was a statistically significant effect among visibility classes.

Density of carcasses and proportion of area surveyed. The density of carcasses was modeled as a function of distance from the turbine. Only carcasses found in 'easy' visibility areas were used for this analysis, and data from all turbines were used, yielding a total of 144 bat carcasses. The searcher efficiency in the 'easy' class was estimated to be 100% (see below in results) and we assumed that the carcass persistence time would be equal for all carcasses within this class and would not change as a function of distance, so that any carcasses removed before detection would be equally distributed among all distances, creating no bias. Carcasses from other visibility classes were not used because their probability of detection would be different from those in the easy class, and while we can adjust total fatality for detection probability less than 1, we cannot assume that the adjustment applies to a particular distance. Carcasses were "binned" into 2 m rings (Figure 3) extending from the turbine edge out to the theoretical maximum plot distance. We determined the total area among all search plots that was in the easy visibility class (m^2) and calculated carcass density from this. We combined data from all turbines to calculate carcass density (number of carcasses/ m^2) in each ring. These data were modeled as a conditional cubic polynomial with the following estimated function:

If distance $\leq 81m$, then density = $\exp(-2.8573 + 0.0849*dist - 0.0028*dist^2 + 0.00001858*dist^3) - 0.01$; otherwise, density = $0.00137*\exp(-0.05*(distance-81))$

The actual, unweighted, area surveyed within plots ranged from 41.8 to 95.6% of the delineated theoretical maximum. Density of bat carcasses is known to diminish with increasing distance from the turbine (e.g., Kerns et al. 2005), so a simple adjustment to fatality based on area surveyed would likely lead to over estimates, because unsearched areas tend to be farthest from turbines. The calculated function (see above) relating density to distance from a turbine

Figure 3. Hypothetical carcass search plot for a wind turbine illustrating 2 m rings extending from the turbine edge out to the theoretical maximum plot distance and the depicted “easy” searchable area (shaded area within line drawing) of the plot, used to develop weights for adjusting fatalities.



was used to weight each square meter in the plot. The density-weighted fraction of each plot that was actually searched (60.9–99.6%, mean = 82.9%) was used as an area adjustment to per-turbine fatality estimates rather than using a simple proportion. In addition, using this density weight, we estimated that the search plots represented 94.7% of the total density weighted area of the entire site, rather than only 83% of the actual surveyed area.

Fatality estimates. We adjusted the number of fatalities found by searchers by estimates of searcher efficiency and of the proportion of carcasses expected to persist unscavenged during each interval using the following equation:

$$\frac{c_{ijk}}{\hat{a}_i * \hat{p}_{jk} * \hat{r}_j * \hat{e}_j} = \hat{f}_{ijk}$$

Where:

\hat{f}_{ijk} is the estimated fatality in the k^{th} visibility class that occurred at the i^{th} turbine during the j^{th} search;

c_{ijk} is the observed number of carcasses in the k^{th} visibility class at the i^{th} turbine during the j^{th} search;

\hat{a}_i is the estimated density-weighted proportion of the area of the i^{th} turbine that was searched;

\hat{p}_{jk} is the estimated probability that a carcass in the k^{th} visibility class that is on the ground during the j^{th} search will actually be seen by the observer;

\hat{r}_j is the probability than an individual bird or bat that died during the interval preceding the j^{th} search will not be removed by scavengers; and

\hat{e}_j is the effective interval (i.e., the ratio of the length of time before 99% of carcasses can be expected to be removed, to the search interval).

The value for \hat{p}_{jk} was estimated through searcher efficiency trials and assumed not to differ among turbines, but differ with search interval (j) and visibility class (k); \hat{r}_j is a function of the average carcass persistence rate and the length of the interval preceding the j^{th} search; and \hat{r}_j and \hat{e}_j are assumed not to differ among turbines, but differ with search interval (j).

The estimated annual per turbine fatality was calculated for PGC and curtailed turbines using two different estimators: a modified version of an estimator presented by Johnson et al. (2003) (P. Shoenfeld, unpublished data) used by Kerns and Kerlinger (2004) and Kerns et al.

(2005) (herein referred to as the modified estimator, which is the current estimator required by PGC 2007) but which has been shown to be biased under certain conditions (Huso in press), and an estimator newly derived by M. Huso, Oregon State University (Huso in press; herein referred to as the MH estimator). The equation for the MH estimator in this study is:

$$\hat{f} = \frac{\sum_{i=1}^u \sum_{j=1}^{n_i} \sum_{k=1}^3 \hat{f}_{ijk}}{u}$$

where n_i is the number of searches carried out at turbine i , $i = 1, \dots, u$, and $u = 10$ or 12 for PGC and curtailment turbines, respectively. The per turbine estimate and confidence limits were divided by 0.947 to adjust for actual density-weighted area searched and multiplied by 23 to give total annual fatality estimates (Cochran 1977). No closed form solution is yet available for the variance of this estimator, so 95% confidence intervals of this estimate were calculated by bootstrapping (Manly 1997). Searcher efficiency was estimated from a bootstrap sample (with replacement) of searcher efficiency data, carcass persistence estimated from a bootstrap sample of carcass persistence data, and these values were applied to the carcass data from a bootstrap sample of turbines to estimate average fatality per turbine. This process was repeated 1000 times. The 2.5th and 97.5th quantiles from the 1000 bootstrapped estimates formed the 95% confidence limits of the estimated fatality.

RESULTS

Comparison of Treatments

A total of 32 fresh bat fatalities were found at the 12 curtailment study turbines between 26 July and 10 October 2008. At least one fresh fatality was found at each turbine, and 10 of the 12 turbines had at least 1 fatality during a fully operational night, indicating that fatalities did not occur disproportionately at only some turbines, but were well distributed among all turbines (Figure 4). We found 3 fresh fatalities at turbines that were curtailed when wind speeds were <5.0 m/s (C5) the preceding night, 6 at turbines curtailed when wind speeds were <6.5 m/s (C6), and 23 at turbines that were fully operational.

There was strong evidence that the estimated number of fatalities over 25–26 nights differed among turbines ($F_{2,33} = 8.99$, $p = 0.008$, Figure 5). There was no difference between the number of fatalities at C5 and C6 turbines ($\chi_1^2 = 0.83$, $p = 0.3625$, 95% CI: 0.11–2.22; Table 4, Figure 5). Total fatalities at fully operational turbines were estimated to be 5.4 times greater on average than at curtailed turbines, C5 and C6 combined ($\chi_1^2 = 14.63$, $p = 0.001$, 95% CI: 2.28–12.89; Table 4, Figure 5). In other words, 73% (95% CI: 53–87%) of all fatalities at curtailment turbines likely occurred when the turbines were fully operational.

Figure 4. Number of fresh bat fatalities (n = 32 total) found at each turbine for each of three operational treatments (cut-in speed changed to 5.0 m/s [C5], cut-in at 6.5 m/s [C6], and fully operational [F]) for 12 turbines at the Casselman Wind Project in Somerset County, Pennsylvania, 26 July to 10 October 2008.

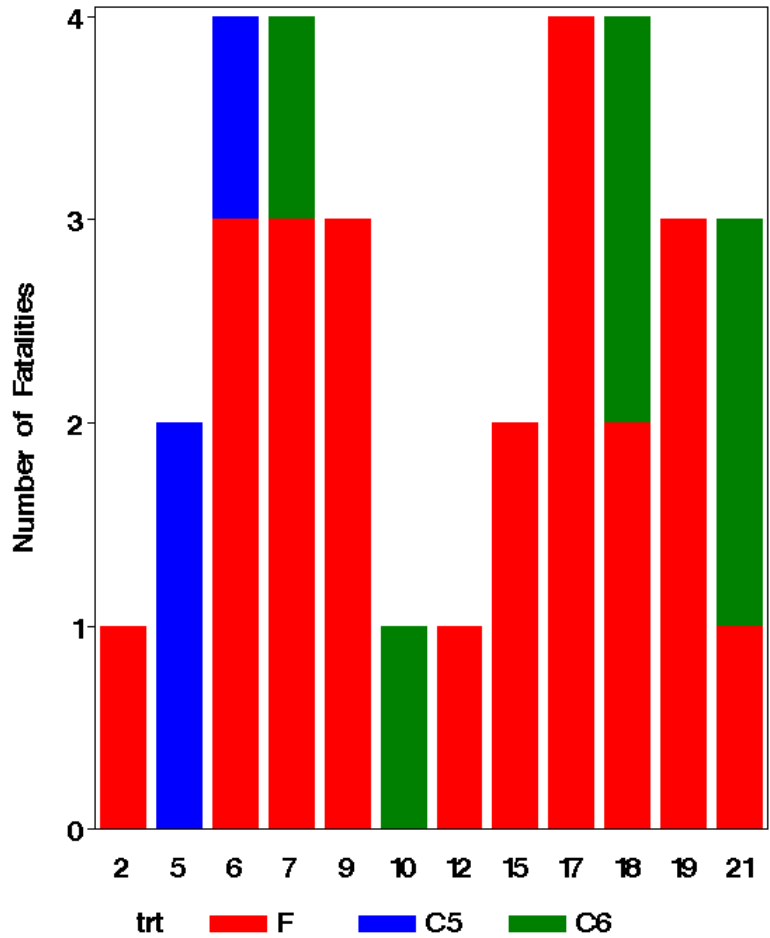


Figure 5. Estimated number of fresh bat fatalities per turbine, and 95% confidence intervals, over 25 nights for each of three treatments (cut-in speed changed to 5.0 m/s, cut-in at 6.5 m/s, and fully operational [none]) for 12 turbines at the Casselman Wind Project in Somerset County, Pennsylvania, 26 July to 10 October 2008.

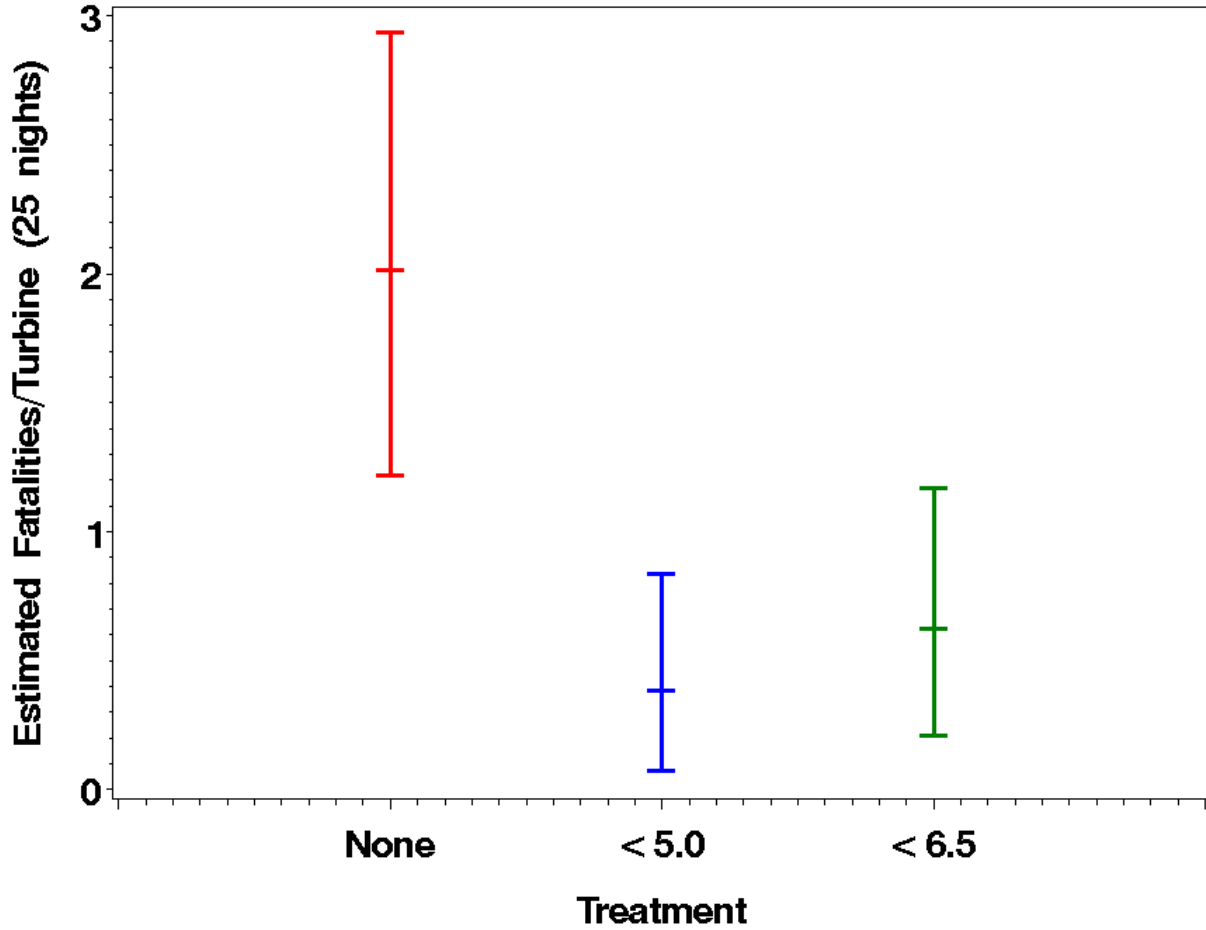


Table 4. Estimated ratio of the number of fresh bat fatalities per turbine, and 95% confidence interval, over 25 nights for each of three curtailment treatments (cut-in speed changed to 5.0 m/s, cut-in at 6.5 m/s, and fully operational) for 12 turbines at the Casselman Wind Project in Somerset County, Pennsylvania, 26 July to 10 October 2008.

Comparison	Estimated Ratio	95% Confidence Interval	
Cut-in at 5.0 vs 6.5 m/s	0.50	0.11	2.22
Fully operational vs average of 5.0 and 6.5 m/s treatments	5.42	2.28	12.89

Comparison of PGC and Curtailment Turbine Bat Fatalities

The average temperature (Figure 6), average wind speed (Figure 7), and percent of night when wind speed was <6.5 m/s (Figure 8) were similar between the PGC and curtailed turbines, suggesting no inherent environmental differences between the two groups of turbines that might have influenced our comparison of bat fatalities. However, while the average proportion of density weighted area in the easy visibility class was not statistically significantly different between the two turbine groups (Satterthwaite t-test with unequal variances, $t_{10.9} = -1.64$, $p = 0.129$), one PGC turbine had about 40% in the easy class when all others in the PGC and the curtailment group were ~20% or less (Figure 9). This turbine (PGC #20) could bias fatality numbers for the PGC group because carcasses at this turbine would be easier to find than at other turbines. When this turbine was omitted from the analysis, the average percent of the density weighted area in the easy visibility class was 16.7% (95% CI: 13.9, 19.5) for PGC turbines and 14.5% (95% CI: 12.5, 16.4) for curtailed turbines. Without turbine 20, there was no evidence that the average fraction of the density weighted area actually searched differed between the two groups ($t_{19} = 0.48$, $p = 0.640$). Thus, we concluded that comparison of the two groups was warranted, as it seemed unlikely to be strongly influenced by differences in detectability of the carcasses among the turbines.

Field Bias Trials. Data from 70 searcher efficiency trials for randomly placed carcasses were fit to a logistic regression model and searcher efficiency differed significantly among the visibility classes ($\chi^2_2 = 25.8$, $p = 0.0001$). All 30 carcasses in the ‘easy’ class that persisted long enough to be observed were found by searchers, while 17 of the 24 carcasses in the ‘moderate’ class that persisted long enough to be observed were found (Table 5). Only 2 of 16 carcasses that persisted more than 1 week in the ‘difficult’ class were found. Data from 114 scavenger removal trial for carcasses were fit to an interval-censored parametric failure time model. Using $\alpha = 0.10$, average carcass persistence time was not found to differ among visibility classes ($\chi^2_2 = 1.778$, $p = 0.411$). Average persistence time was estimated to be 28.19 (95% CI: 16.87, 50.15) days (Table 5).

Figure 6. Histograms of the percent of survey nights and average temperature (C) for 10 turbines surveyed as part of the Pennsylvania Game Commission Cooperative Agreement (PGC; n = 10) and experimentally curtailed turbines (CURT; n = 12) from 26 July to 10 October 2008 at the Casselman Wind Project facility in Somerset County, Pennsylvania.

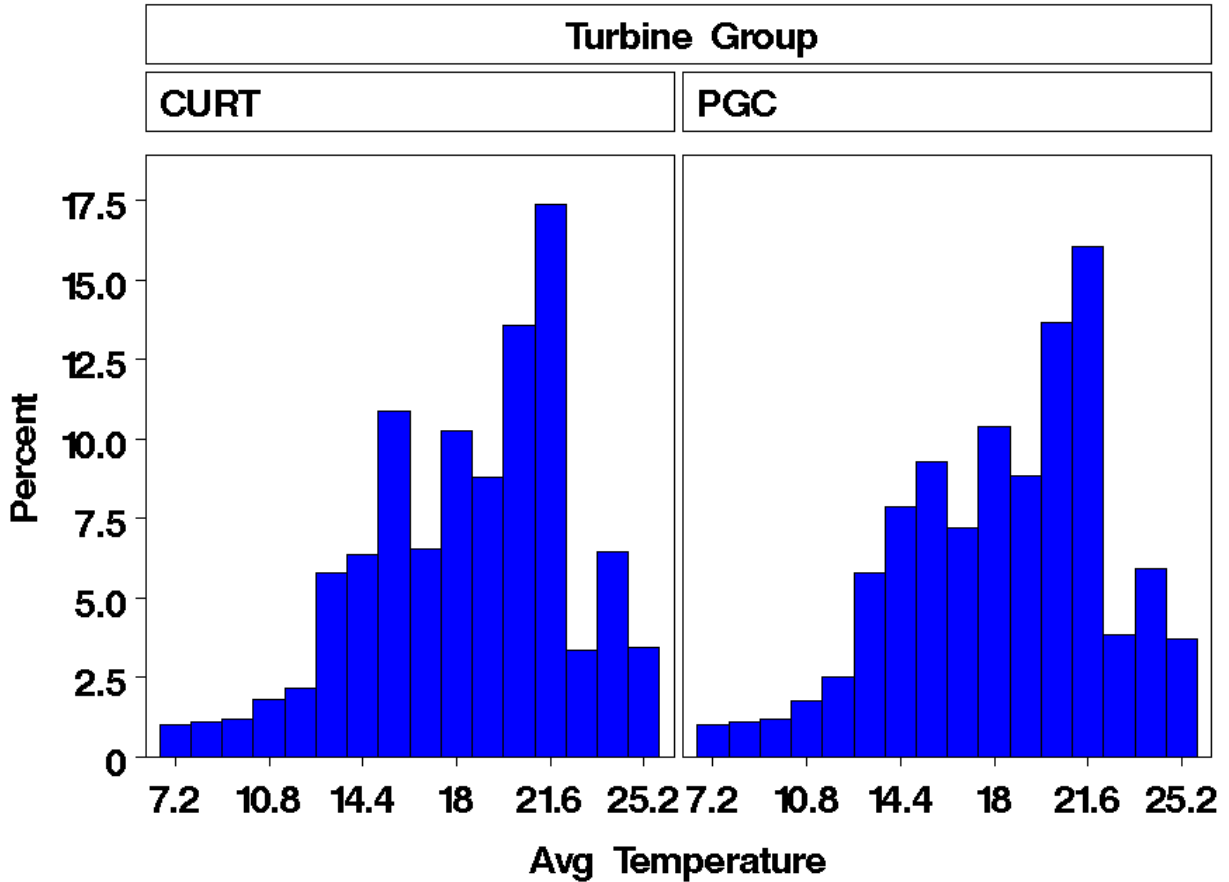


Figure 7. Histograms of the percent of survey nights and average wind speed (m/s) for 10 turbines surveyed as part of the Pennsylvania Game Commission Cooperative Agreement (PGC; n = 10) and experimentally curtailed turbines (CURT; n = 12) from 26 July to 10 October 2008 at the Casselman Wind Project facility in Somerset County, Pennsylvania.

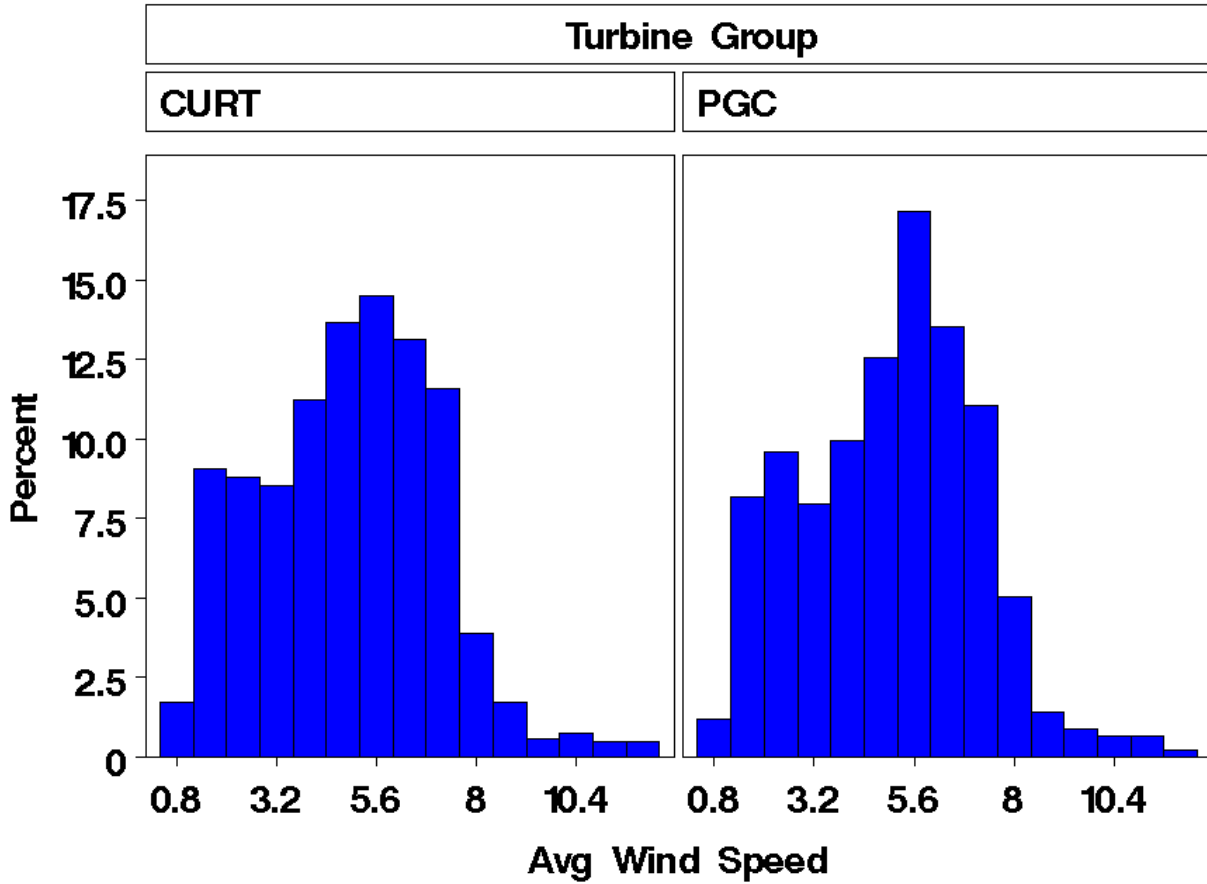


Figure 8. Histograms of the percent of survey nights and percent of night when wind speed was < 6.5 m/s for 10 turbines surveyed as part of the Pennsylvania Game Commission Cooperative Agreement (PGC; n = 10) and experimentally curtailed turbines (CURT; n = 12) from 26 July to 10 October 2008 at the Casselman Wind Project facility in Somerset County, Pennsylvania.

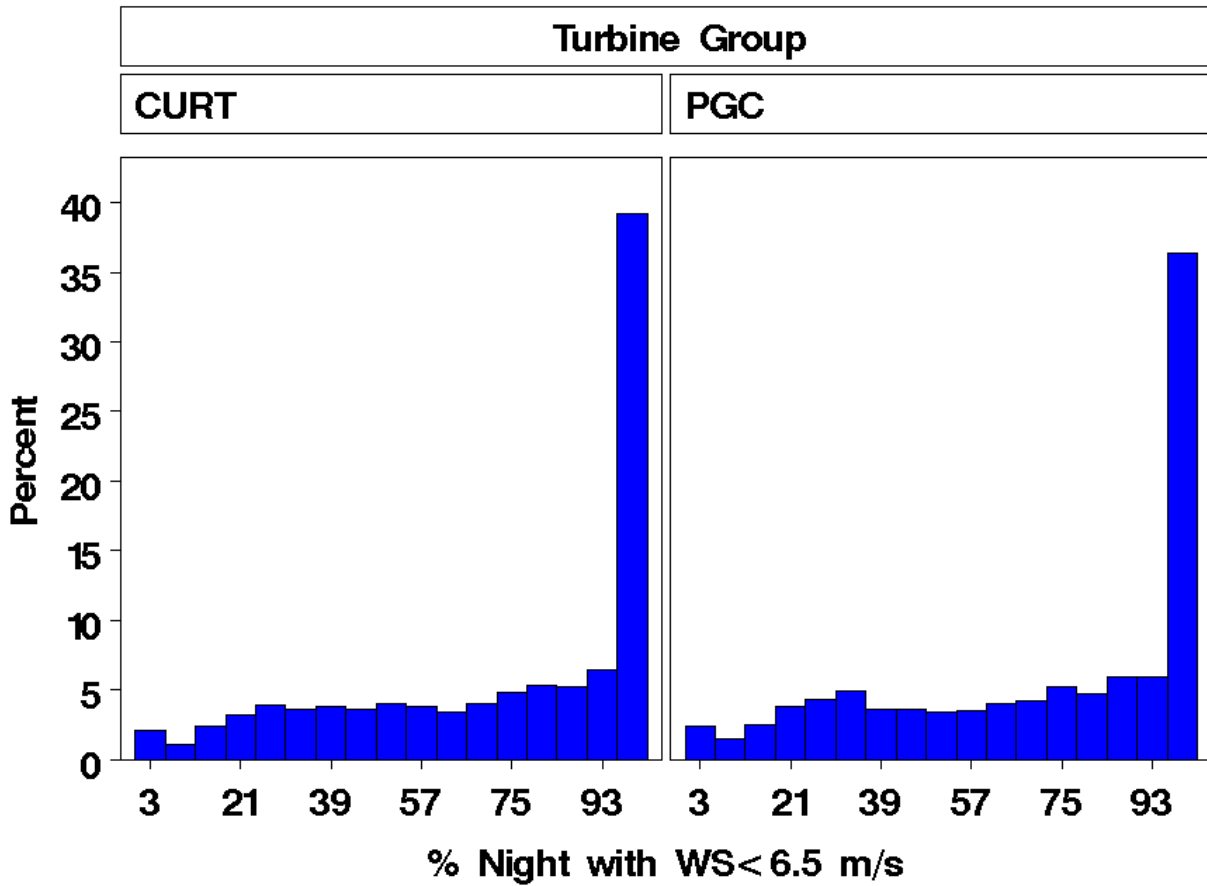


Figure 9. Histograms of the density weighted percent of plots in easy visibility habitat for 10 turbines surveyed as part of the Pennsylvania Game Commission Cooperative Agreement (PGC; n = 10) and experimentally curtailed turbines (CURT; n = 12) from 26 July to 10 October 2008 at the Casselman Wind Project facility in Somerset County, Pennsylvania.

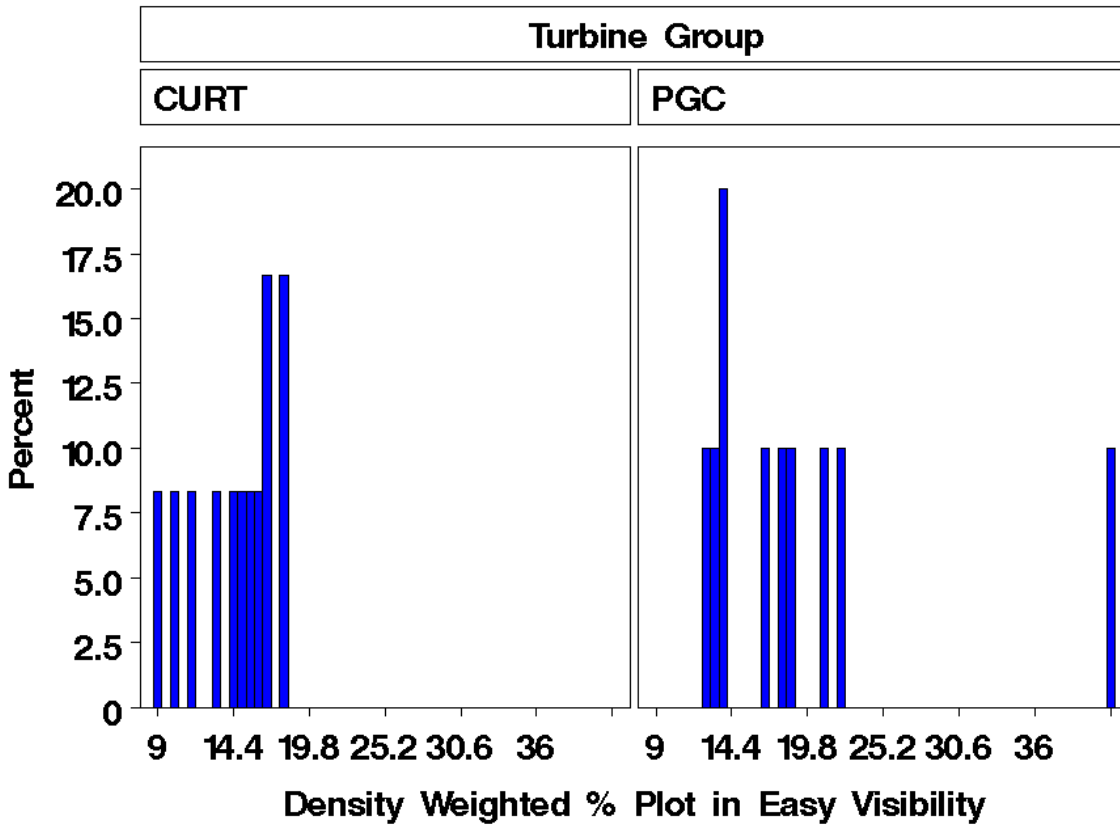


Table 5. Mean and 95% confidence intervals (CI) for searcher efficiency (proportion of available carcasses a searcher was likely to detect) and carcass persistence (average number of days a carcass was estimated to persist unscavenged or detectable by a searcher) in each habitat visibility class from the Casselman Wind Project facility in Somerset County, Pennsylvania in 2008. Difficult and very difficult classes (classes 3 and 4) were combined for the final analysis.

Visibility Class	<u>Searcher Efficiency</u>			<u>Carcass Persistence</u>		
	Mean	Lower CI	Upper CI	Mean	Lower CI	Upper CI
easy	1.000	1.000	1.000	28.192	16.866	50.153
moderate	0.708	0.542	0.875	28.192	16.866	50.153
difficult	0.125	0.031	0.313	28.192	16.866	50.153

Fatality Estimates. The estimated number of bat fatalities per turbine from 26 July through 11 October was 23.49 (95% CI: 16.14, 68.93) for the PGC turbines and 10.05 (95% CI: 6.76, 32.49) for the curtailed turbines using the MH estimator (Table 6). Using the modified estimator, the estimated number of bat fatalities per turbine was 14.86 (95% CI: 11.53, 32.91) for the PGC turbines and 6.60 (95% CI: 5.54, 14.56) for the curtailed turbines. The average bat fatality estimate per turbine using the MH estimator was 1.5 times greater than that of the modified estimator. Estimated bat fatalities per turbines were 1.23 to 4.68 times greater (mean = 2.34) at PGC turbines relative to curtailed turbines, using the MH estimator, and 1.61 to 2.87 times greater (mean = 2.25) using the modified estimator. This analysis provides further support for the contention that reducing operational hours during low wind periods reduces bat fatalities, but is a conservative estimate of the actual difference because treatment turbines were fully operational one-third of the time during the study.

Financial Costs of Curtailment

At the end of the experiment, Iberdrola Renewables evaluated how much power loss had occurred by comparing daily output of the curtailed turbines with the output of turbines that were not curtailed. The lost power output resulting from the experiment amounted to approximately 2% of total project output during the 76-day study period (12 turbines, 26 July to 10 October). Hypothetically, if the experiment had been applied to all 23 turbines at the Casselman site for the study period (½ hour before sunset to ½ hour after sunrise for the 76 days we studied), the 5.0 m/s curtailment used would have resulted in lost output equaling 3% of output during the period and only 0.3 % of total annual output. If the 6.5 m/s curtailment were applied to all 23 turbines during the study period, the lost output would have amounted to 11% of total output for the

Table 6. Estimated fatalities (mean and 95% confidence intervals [CI]) per turbine and for the site total, adjusted for searcher efficiency, carcass removal, and area, for PGC (fully operational) and curtailed (CURT; curtailed one-third of study period) from 26 July through October 11 for the Casselman Wind Project in Somerset County, Pennsylvania, using two different estimators (MH estimator (M.Huso, Oregon State University, unpublished data [manuscript in press] and the Modified estimator (from P. Shoenfeld, unpublished data, and Erickson et al. 2004; e.g., Kerns and Kerlinger 2004, Kerns et al. 2005; estimator currently required by PGC 2007). We also present the estimated ratio of per turbine fatality at PGC versus Curtailment turbines for the same period.

	N turbines	MH Estimates			Modified Estimates		
		Mean	Lower 95% CL	Upper 95% CL	Mean	Lower 95% CL	Upper 95% CL
Per Turbine							
CURT	12	10.05	6.76	32.49	6.60	5.54	14.56
PGC	10	23.49	16.14	68.93	14.86	11.53	32.91
Site total							
CURT	23	243.9	164.2	789.0	160.3	134.4	353.5
PGC	23	570.4	392.0	1673.7	360.9	279.9	799.1
Ratio of PGC:CURT							
		2.34	1.23	4.68	2.25	1.61	2.87

study period and 1% of total annual output. In addition to the lost power revenues, the company also incurred costs for staff time to set up the processes and controls and to implement the curtailment from the company’s offsite 24-hour operations center based in Portland, Oregon.

DISCUSSION

Our findings were consistent with our predictions that bat fatalities would be significantly reduced by changing turbine cut-in speed and reducing the operational hours during low wind periods, and corroborate the only other studies of operational curtailment (Baerwald et al. 2009, O. Behr, University of Erlangen, unpublished data). All three studies of operational curtailment conducted to date indicate that bat fatalities can be reduced by at least 50%.

In the first analysis, our study design differed from other studies in part because we were able to change treatments easily on each night of the study from a centralized, off-site command center, thus allowing the night to be the experimental unit in our analysis. Because we used the turbine as a blocking factor, any differences in searchable area among turbines were contained in the blocking factor. The almost even distribution of fatalities among turbines indicates that there

was no strong distinction in fatality among turbines, so detected effects can be reasonably attributed to the treatments. This design is very powerful, but also is very dependent on the correct determination of fresh carcasses. If a two day old carcass was discovered, it could have been inaccurately attributed to the treatment of the previous night, rather than the night before that. Appendix 2 presents data from turbines where the potential existed for misclassification of fresh carcasses. For all but one of the fatalities attributed to a curtailment treatment, the previous treatment was a fully operational treatment. In slightly over half (12/23) of the fatalities attributed to fully operational treatments, the previous treatment was also a fully operational treatment. Thus, even if our accuracy in determining fresh carcasses was off by a day and all carcasses that were found were in fact 2 days old and hence killed during the prior treatment, the majority of fatalities would still have been associated with fully operational turbines (12 curtailed vs 20 fully operational, Appendix 2). We do not believe that our misclassification rate was that high, nor do we have reason to believe that the probability of misclassifying a carcass as fresh is in any way associated with the treatment. Thus, we assume that any error in our classification of fresh bats was equal among turbines and treatments and that it did not greatly influence the results of this study. Our second analysis demonstrated that estimated fatalities were higher at PGC compared to curtailed turbines and further supports our contention that reducing operational hours during low wind periods reduces bat fatalities. These fatality differences likely represent a conservative estimate of the effect of curtailment because the curtailed turbines were fully operational 1/3 of the time during the study.

Numerous factors influence the power loss and, thus financial costs of changing the cut-in speed of wind turbines reduce bat fatalities. These include, but are not limited to, the type and size of wind turbines and computer hardware used, market or contract prices of power, power purchase agreements and associated fines for violating delivery of power, and variation in temporal consistency, speed and duration of wind across different sites. Wind speeds in the Mid-Atlantic Highlands region are typically lowest in late summer and early fall (S. McDonald, Iberdrola Renewables, unpublished data). The loss in power production resulting from our experimental treatments was surprisingly low when considering the full annual productivity lost, but power loss was 3 times higher for the 6.5 m/s change in cut-in speed compared to the 5.0 m/s treatment. Our data indicated no significant difference in fatalities between these two changes in cut-in speed, albeit with low statistical power to detect such a difference, and thus further research at the Casselman site and other sites is needed to determine whether lower changes in cut-in speed may provide the same biological effects as higher cut-in speeds with less financial cost. Power loss during our experiment was considerably different from that reported by Baerwald et al. (2009) primarily because we curtailed turbines only at night when bats are flying and because of different market pricing for electricity between the two study sites. Technological limitations of the Vestas V80 turbines studied by Baerwald et al. (2009) forced them to change the cut-in speed for the entire duration of the study, 24 hours a day. Baerwald et al. (2009) noted that if the operational parameters could have been changed only when bats were active at night, then costs would have been even less for their study.

Higher bat activity (e.g., Arnett et al. 2006, 2007b, Redell et al. 2006, Reynolds 2006, Weller 2007) and fatalities (Arnett et al. 2008) have been consistently related to periods of low wind speed and weather conditions typical of the passage of storm fronts. The casual mechanism underlying this relationship remains unclear, but perhaps migration is less efficient for bats in

high wind speeds and thus migratory movement by these species is reduced (Baerwald et al. 2009). Cryan and Brown (2007) reported that fall arrivals of hoary bats on Southeast Farallon Island were related to periods of low wind speed, dark phases of the moon, and low barometric pressure, supporting the view that migration events may be predictable. Low barometric pressure can coincide with passage of cold fronts that may be exploited by migrating birds and bats (Cryan and Brown 2007). Erickson and West (2002) reported that regional climate patterns as well as local weather conditions can predict foraging and migratory activity of bats. On a local scale, strong winds can influence abundance and activity of insects, which in turn influence bat activity. Bats are known to reduce their foraging activity during periods of rain, low temperatures, and strong winds (Erkert 1982, Erickson et al. 2002). Episodic hatches of insects that are likely associated with favorable weather and flight conditions may periodically increase local bat activity (Erickson and West 2002). More studies incorporating daily fatality searches are needed so that patterns such as those described above can be determined at multiple sites across regions. These data will be critical for developing robust predictive models of environmental conditions preceding fatality events, and for predicting when operational curtailment will be most effective to reduce bat fatalities.

Our study is the first U.S.-based experiment of changing cut-in speed to reduce bat fatalities, and only the third we are aware of anywhere in the world. We demonstrated reductions in average nightly bat fatality ranging from 56 to 92% with minimal annual power loss. Given the magnitude and extent of bat fatalities worldwide, the conservation implications of our findings and those of Baerwald et al. (2009) are critically important. However, additional studies are needed to test changes in turbine cut-in speed among different sizes and types of turbines, wind regimes, and habitat conditions to fully evaluate the general effectiveness of this mitigation strategy.

NEXT STEPS

We are preparing a scope of work for a second year of testing operational curtailment at the Casselman facility in summer and fall 2009. We will initiate a second year of post-construction fatality searches at the PGC turbines beginning 1 April and continuing through 15 November 2009 and will initiate searches for the curtailment study beginning in mid- late July and continuing through the second week of October at the Casselman facility. A final report on the 2-years of curtailment data gathered at Casselman will be prepared in December 2009 and distributed in February 2010, with a journal manuscript submission to follow shortly afterward.

LITERATURE CITED

Arnett, E. B., editor. 2005. Relationships between bats and wind turbines in Pennsylvania and West Virginia: an assessment of bat fatality search protocols, patterns of fatality, and behavioral interactions with wind turbines. A final report submitted to the Bats and Wind Energy Cooperative. Bat Conservation International, Austin, Texas, USA.

Arnett, E. B., J. P. Hayes, and M. M. P. Huso. 2006. Patterns of pre-construction bat activity at

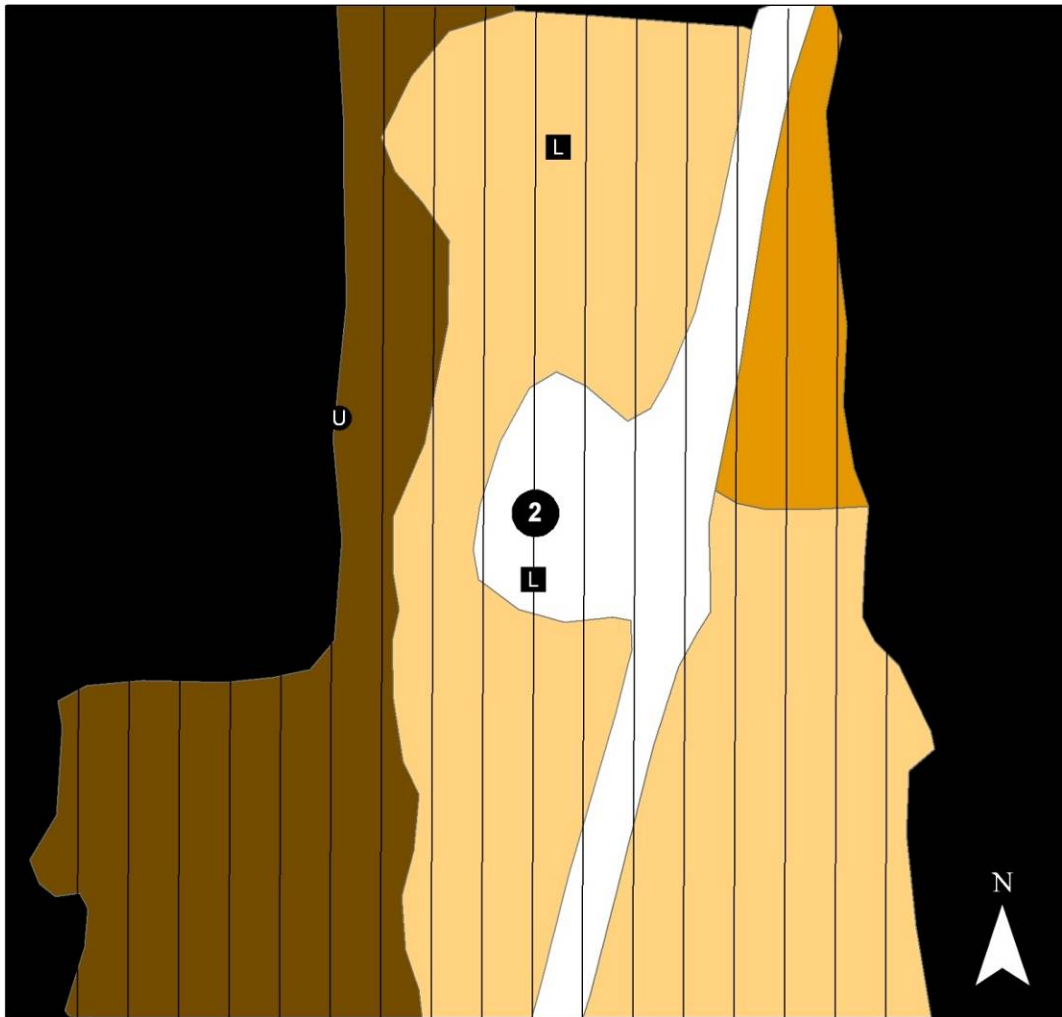
- a proposed wind facility in south-central Pennsylvania. An annual report submitted to the Bats and Wind Energy Cooperative. Bat Conservation International. Austin, Texas, USA.
- Arnett, E. B., D. B. Inkley, D. H. Johnson, R. P. Larkin, S. Manes, A. M. Manville, J. R. Mason, M. L. Morrison, M. D. Strickland, and R. Thresher. 2007a. Impacts of wind energy facilities on wildlife and wildlife habitat. Wildlife Society Technical Review 07-2. The Wildlife Society, Bethesda, Maryland, USA.
- Arnett, E. B., M. M. P. Huso, D. S. Reynolds, and M. Schirmacher. 2007b. Patterns of pre-construction bat activity at a proposed wind facility in northwest Massachusetts. An annual report submitted to the Bats and Wind Energy Cooperative. Bat Conservation International. Austin, Texas, USA.
- Arnett, E. B., K. Brown, W. P. Erickson, J. Fiedler, T. H. Henry, G. D. Johnson, J. Kerns, R. R. Kolford, C. P. Nicholson, T. O'Connell, M. Piorkowski, and R. Tankersley, Jr. 2008. Patterns of fatality of bats at wind energy facilities in North America. *Journal of Wildlife Management* 72: 61–78.
- Arnett, E. B., M. Schirmacher, M. M. P. Huso, and J. P. Hayes. 2009. Patterns of bat fatality at the Casselman Wind Project in south-central Pennsylvania. An annual report submitted to the Bats and Wind Energy Cooperative and the Pennsylvania Game Commission. Bat Conservation International. Austin, Texas, USA.
- Baerwald, E. F. 2008. Variation in the activity and fatality of migratory bats at wind energy facilities in southern Alberta: causes and consequences. Thesis, University of Calgary, Calgary, Alberta, Canada.
- Baerwald, E. F., J. Edworthy, M. Holder, and R. M. R. Barclay. 2009. A large-scale mitigation experiment to reduce bat fatalities at wind energy facilities. *Journal of Wildlife Management* 73: in press.
- Brown, R. G., and M. L. Brown. 1972. *Woody Plants of Maryland*. Port City Press, Baltimore, Maryland, USA.
- Cryan, P. M. 2003. Seasonal distribution of migratory tree bats (*Lasiurus* and *Lasionycteris*) in North America. *Journal of Mammalogy* 84:579–593.
- Cryan, P. M., and A. C. Brown. 2007. Migration of bats past a remote island offers clues toward the problem of bat fatalities at wind turbines. *Biological Conservation* 139: 1–11.
- Cochran, W. G. 1977. *Sampling techniques*, 3rd edition. John Wiley & Sons, New York, New York, USA.
- Dürr, T., and L. Bach. 2004. Bat deaths and wind turbines – a review of current knowledge, and of the information available in the database for Germany. *Bremer Beiträge für Naturkunde und Naturschutz* 7: 253–264.

- Eckert, H.G. 1982. Ecological aspects of bat activity rhythms. Pages 201–242 in T. H. Kunz, editor. Ecology of bats. Plenum Press, New York.
- Energy Information Administration (EIA). 2008. Annual energy outlook 2008 with projections to 2030. U.S. Department of Energy, Energy Information Administration, Washington, D.C., USA.
- Erickson, J. L., and S. D. West. 2002. The influence of regional climate and nightly weather conditions on activity patterns of insectivorous bats. *Acta Chiropterologica* 4: 17–24.
- Erickson, W. P., G. D. Johnson, D. Young, M. D. Strickland, R. Good, M. Bourassa, K. Bay, and K. Sernka. 2002. Synthesis and comparison of baseline avian and bat use, raptor nesting and mortality information from proposed and existing wind developments. Unpublished report prepared for Bonneville Power Administration, Portland, Oregon, USA.
- Fiedler, J. K. 2004. Assessment of bat mortality and activity at Buffalo Mountain Windfarm, eastern Tennessee. Thesis, University of Tennessee, Knoxville, Tennessee, USA.
- Fiedler, J. K., T. H. Henry, C. P. Nicholson, and R. D. Tankersley. 2007. Results of bat and bird mortality monitoring at the expanded Buffalo Mountain windfarm, 2005. Tennessee Valley Authority, Knoxville, USA
- Hurlbert, S. H. 1984. Pseudoreplication and the design of ecological field experiments. *Ecological Monographs* 54: 187–211.
- Johnson, G. D., W. P. Erickson, M. D. Strickland, M. F. Shepherd, D. A. Shepherd, and S. A. Sarappo. 2003. Mortality of Bats at a Large-Scale Wind Power Development at Buffalo Ridge, Minnesota. *American Midland Naturalist* 150:332–342.
- Kerns, J., and P. Kerlinger. 2004. A study of bird and bat collision fatalities at the Mountaineer Wind Energy Center, Tucker County, West Virginia. Annual Report for 2003. Curry and Kerlinger, L. L. C., McLean, Virginia, USA.
- Kerns, J, W. P. Erickson, and E. B. Arnett. 2005. Bat and bird fatality at wind energy facilities in Pennsylvania and West Virginia. Pages 24–95 in E. B. Arnett, editor. Relationships between bats and wind turbines in Pennsylvania and West Virginia: an assessment of bat fatality search protocols, patterns of fatality, and behavioral interactions with wind turbines. A final report submitted to the Bats and Wind Energy Cooperative. Bat Conservation International, Austin, Texas, USA.
- Kunz, T. H., E. B. Arnett, W. P. Erickson, G. D. Johnson, R. P. Larkin, M. D. Strickland, R. W. Thresher, and M. D. Tuttle. 2007. Ecological impacts of wind energy development on bats: questions, hypotheses, and research needs. *Frontiers in Ecology and the Environment*: 5: 315–324.

- Manly, B.F.J. 1997. *Randomization and Monte Carlo Methods in Biology*, 2nd edition. Chapman and Hall. New York, New York, USA.
- O'Shea, T. J., M. A. Bogan, and L. E. Ellison. 2003. Monitoring trends in bat populations of the United States and territories: status of the science and recommendations for the future. *Wildlife Society Bulletin* 31: 16–29.
- Pennsylvania Game Commission (PGC). 2007. *Pennsylvania Game Commission wind energy voluntary agreement*. Pennsylvania Game Commission, Harrisburg, Pennsylvania, USA
- Racey, P. A., and A. C. Entwistle. 2003. Conservation ecology of bats. Pages 680–743 *in* T. H. Kunz and M. B. Fenton, editors. *Bat Ecology*. University of Chicago Press, Chicago, Illinois, USA.
- Reynolds, D. S. 2006. Monitoring the potential impact of a wind development site on bats in the northeast. *Journal of Wildlife Management*: 70: 1219–1227
- SAS Institute Inc. 2007. *SAS/STAT User's Guide, Version 9.1*. SAS Institute, Cary, North Carolina, USA.
- Strausbaugh, P.D., and E. L. Core. 1978. *Flora of West Virginia*. Second edition. Seneca Books, Grantsville, West Virginia, USA.
- Winhold, L., A. Kurta, and R. Foster. 2008. Long-term change in an assemblage of North American bats: are eastern red bats declining? *Acta Chiropterologica* 10: 359–366.

APPENDIX 1
(Turbine Plot Maps)

Turbine 2



Fatalities by Species

■ L LANO

● U UNKN

Transects

Habitat Classes

□ Easy

■ Moderate

■ Difficult

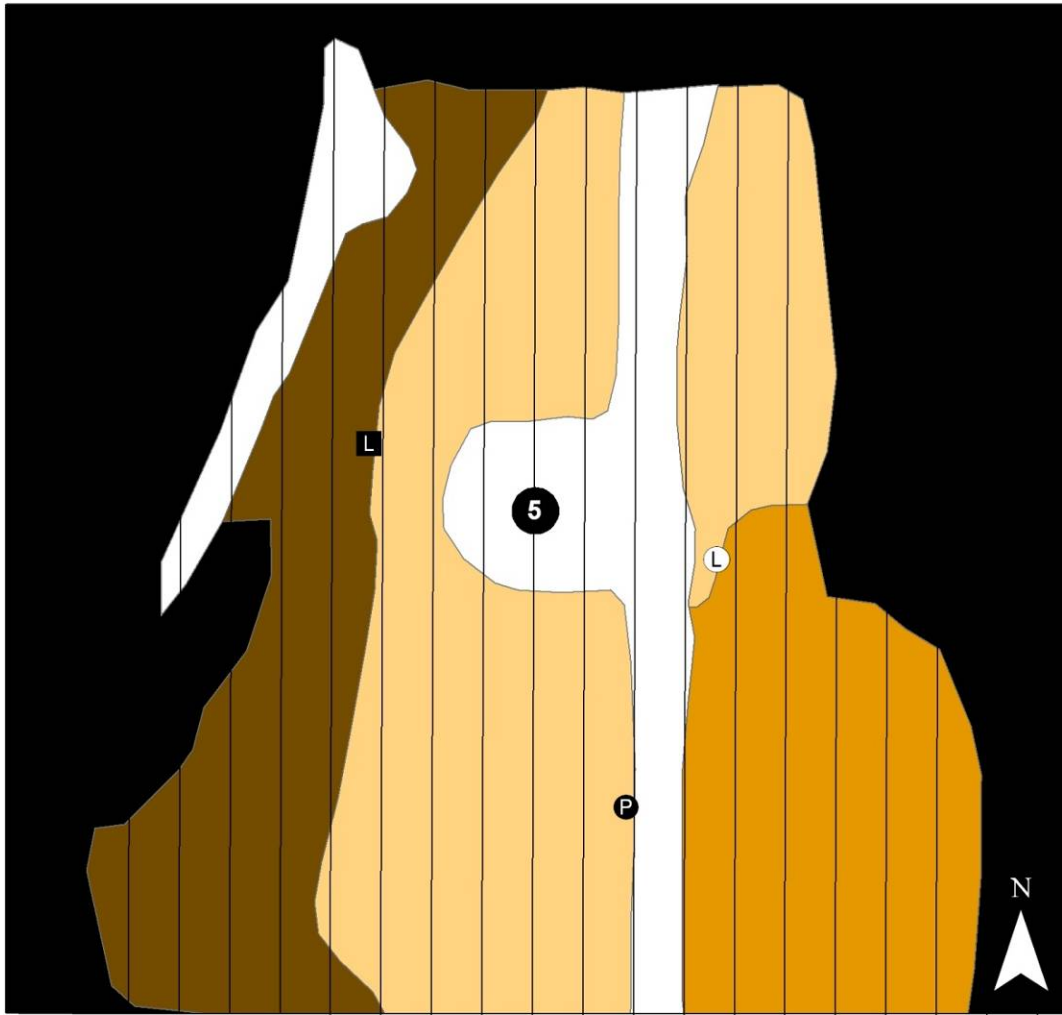
■ Very Difficult

■ Out

0 10 20 30 40 Meters



Turbine 5



Fatalities by Species

- Ⓛ LACI
- Ⓛ LANO
- Ⓟ PISU

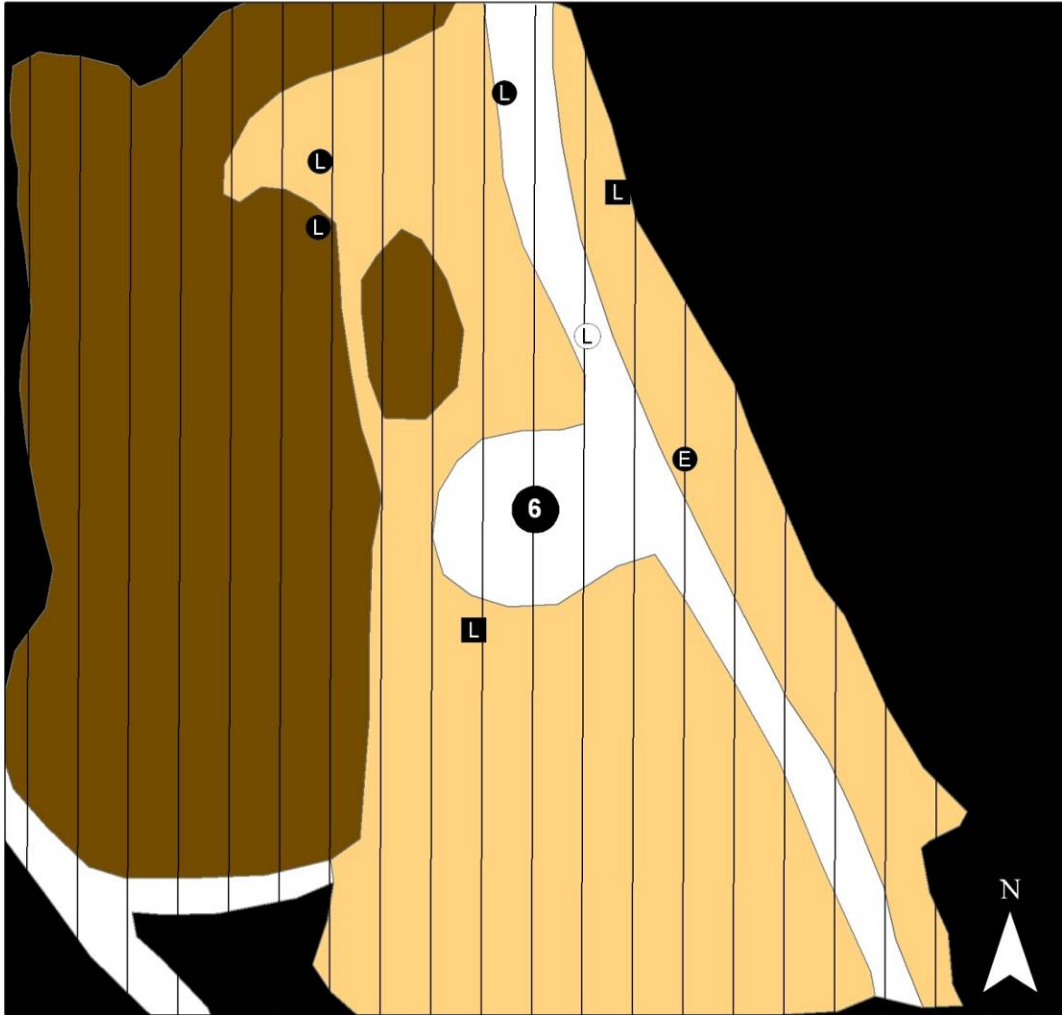
Transects

Habitat Classes

- Easy
- Moderate
- Difficult
- Very Difficult
- Out

0 10 20 30 40 Meters

Turbine 6



Fatalities by Species

- EPFU
- LABO
- LACI
- LANO

Transects

Habitat Classes

- Easy
- Moderate
- Difficult
- Very Difficult
- Out

0 10 20 30 40 Meters

Turbine 7



Fatalities by Species

- LABO
- LACI
- LANO
- MYLU
- PISU

Transects

Habitat Classes

- Easy
- Moderate
- Difficult
- Very Difficult
- Out

0 10 20 30 40 Meters

Turbine 9



Fatalities by Species

- ⊙ LACI
- LANO

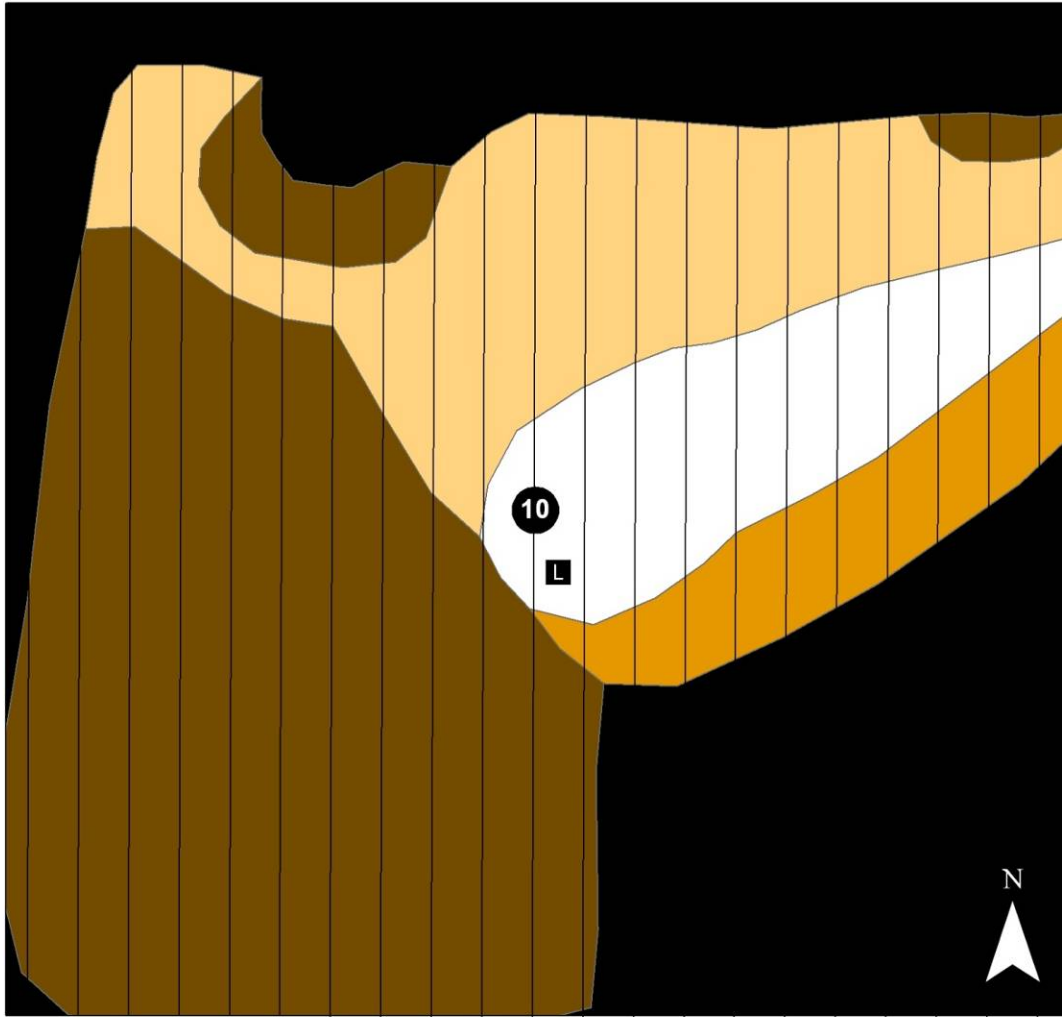
Transects

Habitat Classes

- Easy
- Moderate
- Difficult
- Very Difficult
- Out

0 10 20 30 40 Meters

Turbine 10



Fatalities by Species

■ LANO

Transects

Habitat Classes

- Easy
- Moderate
- Difficult
- Very Difficult
- Out

0 10 20 30 40 Meters

Turbine 12



Fatalities by Species

● LABO

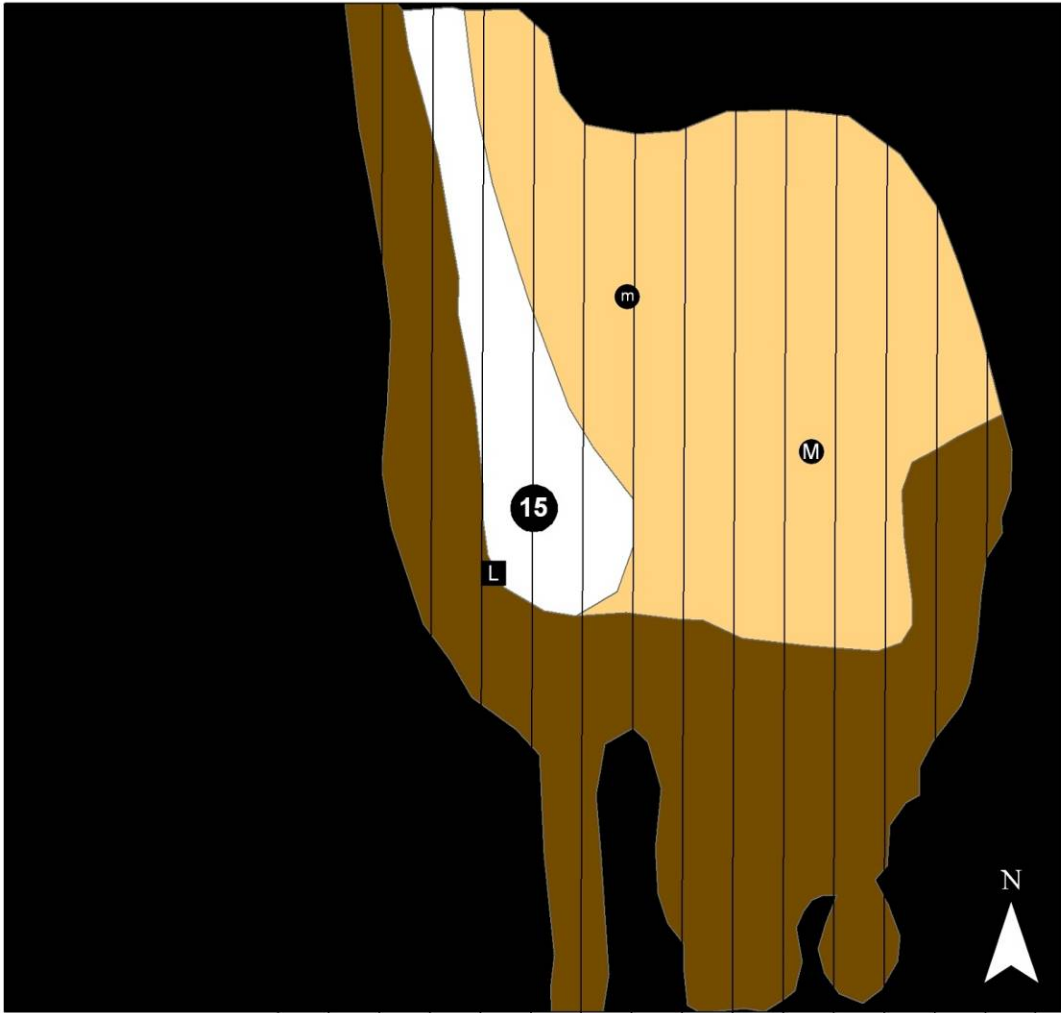
Transects

Habitat Classes

- Easy
- Moderate
- Difficult
- Very Difficult
- Out

0 10 20 30 40 Meters

Turbine 15



Fatalities by Species

- L** LANO
- m** MY--
- M** MYLU

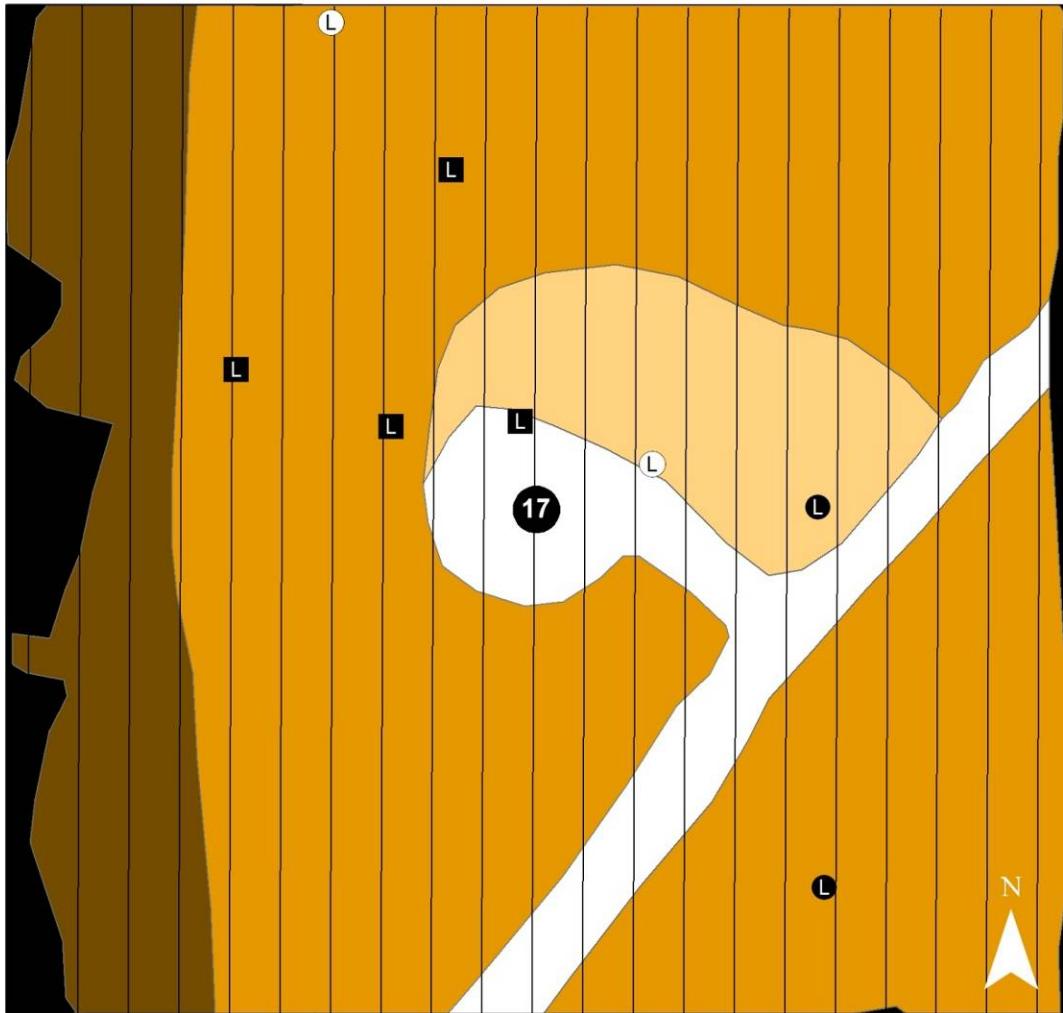
Transects

Habitat Classes

- Easy
- Moderate
- Difficult
- Very Difficult
- Out

0 10 20 30 40 Meters

Turbine 17



Fatalities by Species

- LABO
- LACI
- LANO

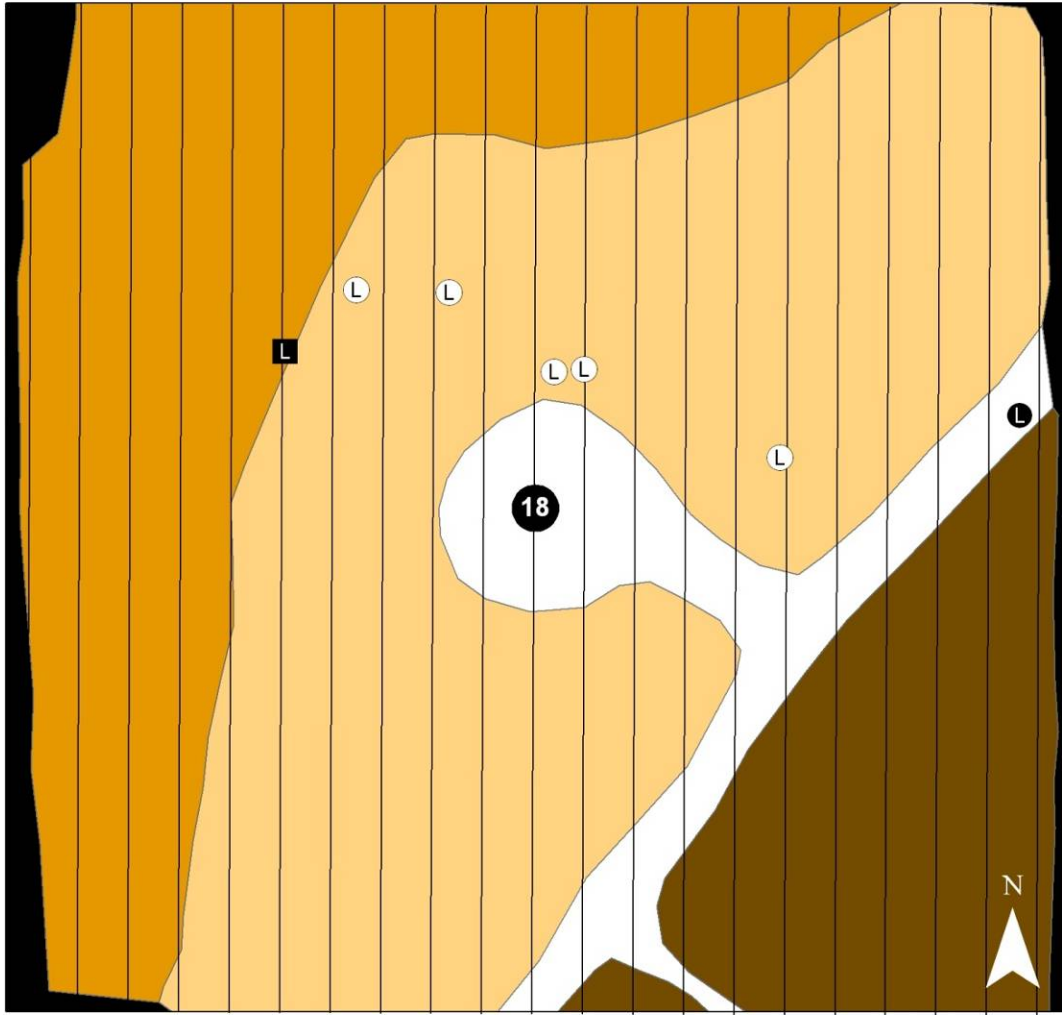
Transects

Habitat Classes

- Easy
- Moderate
- Difficult
- Very Difficult
- Out

0 10 20 30 40 Meters

Turbine 18



Fatalities by Species

- LABO
- LACI
- LANO

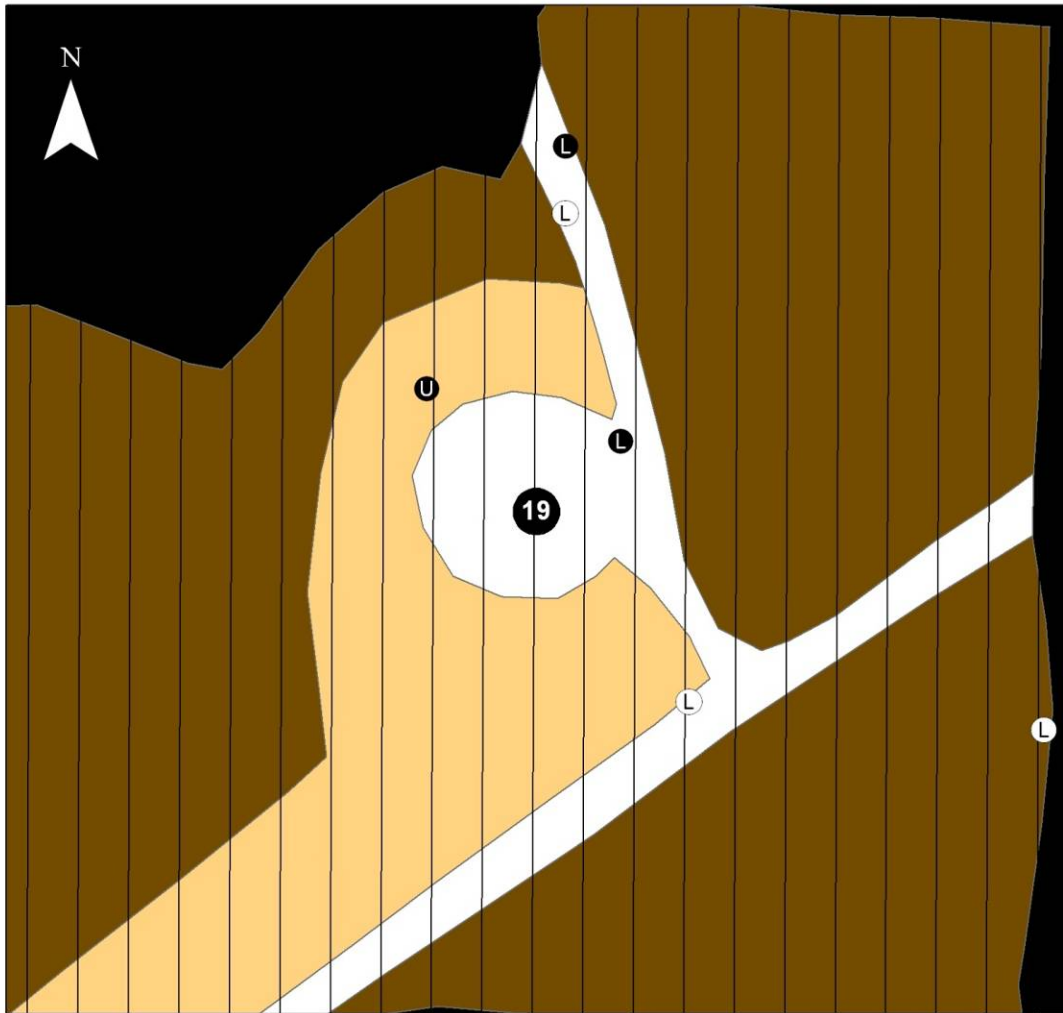
Transects

Habitat Classes

- Easy
- Moderate
- Difficult
- Very Difficult
- Out

0 10 20 30 40 Meters

Turbine 19



Fatalities by Species

- LABO
- LACI
- UNKN

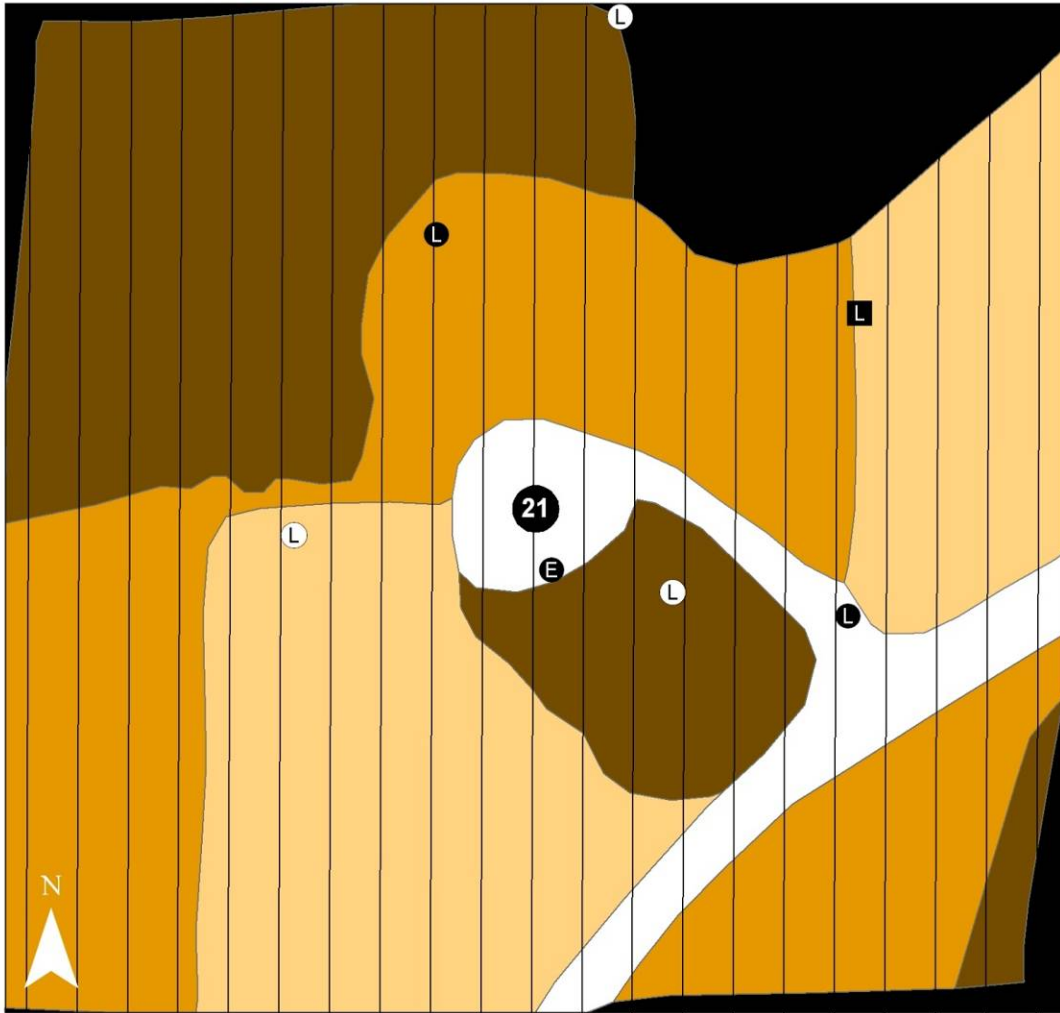
Transects

Habitat Classes

- Easy
- Moderate
- Difficult
- Very Difficult
- Out

0 10 20 30 40 Meters

Turbine 21



Fatalities by Species

- EPFU
- LABO
- LACI
- LANO

Transects

Habitat Classes

- Easy
- Moderate
- Difficult
- Very Difficult
- Out

0 10 20 30 40 Meters

Appendix 2. Turbines, fatality count, and treatments that could have yielded potential for misclassification of fresh bat fatalities to treatments at the Casselman Wind Project in Somerset County, Pennsylvania.

Turbine	Fatality count	Treatment	Prior Treatment
6	1	C5	C5
5	1	C5	NF
5	1	C5	NF
7	1	C6	NF
10	1	C6	NF
18	1	C6	NF
18	1	C6	NF
21	1	C6	NF
21	1	C6	NF
6	1	NF	C5
6	1	NF	C5
9	1	NF	C5
17	1	NF	C5
2	1	NF	C6
6	1	NF	C6
7	1	NF	C6
15	1	NF	C6
17	1	NF	C6
18	1	NF	C6
19	1	NF	C6
7	2	NF	NF
9	1	NF	NF
9	1	NF	NF
12	1	NF	NF
15	1	NF	NF
17	2	NF	NF
18	1	NF	NF
19	1	NF	NF
19	1	NF	NF
21	1	NF	NF

FPL Energy Carbon Offsets		Product Content Label	
Project Type	Project Certification	Project Location	% of Product*
Renewable Energy	Green-e Climate	United States	100%
The emission reductions supplied were created in:		{2007-2008}	
 <p>Green-e Climate is an independent certification program for greenhouse gas emissions reductions (offsets) sold on the voluntary market. It provides a way to identify products that meet the program's high environmental and consumer-protection standards. For more information on Green-e Climate certification requirements, or to find certified products, see www.green-e.org or call 888 63-GREEN.</p> <p><small>* The percentages listed are prospective. Actual figures may vary. For more information on how much they can vary see Price, Terms & Conditions.</small></p>			

Lauren Coartney

From: BayLink Voice Mail <support@baylinkcentral.com>
Sent: Friday, March 04, 2011 4:02 PM
To: ECOSUB
Subject: Fax from [619-235-6275] - Friday, March 04, 2011 at 4:00 PM
Attachments: FaxDocument.pdf

You received the attached fax document on Friday, March 04, 2011 at 4:00 PM From a fax machine at: 619-235-6275
This fax was left in mailbox [17732] 760-405-9604 There are 2 pages in the attachment.

MsgRef[1023-17732:8668355]

Thank you for using BayLink Voice Mail <http://www.mybaylink.com>

This footnote confirms that this email message has been scanned by PineApp Mail-SeCure for the presence of malicious code, vandals & computer viruses.



Notice of Extension of the Draft Environmental Impact Report/
Draft Environmental Impact Statement (DEIR/DEIS) Public Review Period for:
East County Substation/Tule Wind/Energia Sierra Juarez Gen-Tie Projects

State Clearinghouse No. 2009121079

DOI-BLM-CA-D070-2010-0027-EIS (ECO Sub)
DOI-BLM-CA-D070-2008-0040-EIS (Tule Wind)



Lead Agencies: California Public Utilities Commission
United States Department of the Interior, Bureau of Land Management

PUBLIC COMMENT PERIOD EXTENSION

By this notice, California Public Utilities Commission (CPUC) and Bureau of Land Management (BLM) are announcing the extension of the public comment period from February 16, 2011, to March 4, 2011, for the East County Substation/Tule Wind/Energia Sierra Juarez Gen-Tie Projects DEIR/DEIS. The Joint DEIR/DEIS was released for public review on December 24, 2010.

To ensure that comments will be considered, the CPUC/BLM must receive written comments on the DEIR/DEIS by the close of the extended public review period (March 4, 2011). Written comments on the DEIR/DEIS must be postmarked or received no later than March 4, 2011. Written comments on the Joint DEIR/DEIS can be submitted via:

Mail: Iain Fisher, CPUC/Greg Thomsen, BLM, c/o Dudek, 605 Third Street, Encinitas, California 92024

Email: ecosub@dudek.com (CPUC project email) OR catulewind@blm.gov (BLM project email)

Fax: (800) 371-8854 (to send a fax, please press "2")

Before including your address, phone number, email address, or other personal identifying information in your comment, you should be aware that your entire comment, including personal identifying information, may be made publicly available at any time. While you can ask us in your comment to withhold your personal identifying information from public review, we cannot guarantee that we will be able to do so.

PROJECT ABSTRACT

The California Public Utilities Commission (CPUC) and Bureau of Land Management (BLM) have prepared a Joint Draft Environmental Impact Report/Draft Environmental Impact Statement (DEIR/DEIS) under the California Environmental Quality Act (CEQA) and National Environmental Policy Act (NEPA) for consideration of San Diego Gas & Electric Company's (SDG&E's) application to build and operate the East County (ECO) Substation Project. In addition, the Joint DEIR/DEIS addresses Pacific Wind Development's application to build and operate the Tule Wind Project and Energia Sierra Juarez U.S. Transmission, LLC's application to build and operate the Energia Sierra Juarez Generator Tie-Line (ESJ Gen-Tie) Project as "connected actions" under NEPA and "whole of the action" under CEQA. Therefore, the ECO Substation Project, Tule Wind Project, and ESJ Gen-Tie Project are collectively referred to as the Proposed PROJECT in the Joint DEIR/DEIS. In addition, the DEIR/DEIS also considers at a qualitative/program level the proposed Campo, Manzanita, and Jordan wind energy projects, which would connect into the proposed Boulevard Substation Rebuild component of the ECO Substation Project. The CPUC and BLM have determined that these three wind energy projects are sufficiently developed to analyze impacts where feasible. Therefore, for purposes of this EIR/EIS, the Campo, Manzanita, and Jordan projects are qualitatively evaluated at a programmatic level because sufficient project-level information has yet to be developed. The proposed Campo, Manzanita, and Jordan wind energy projects will still require project-specific environmental review and evaluation under all applicable environmental regulations once sufficient project-level information is developed. By including these nascent wind projects as components of the proposed wider PROJECT, it allows the lead agencies to further consider broad impacts, mitigation and consequences of the ECO substation project specifically, and the wider PROJECT as a whole.

X To go with
MARK HASS COMMENTS

The Proposed PROJECT would be located near the unincorporated communities of Jacumba and Boulevard, approximately 70 miles east of downtown San Diego, in the southeastern portion of San Diego County. If approved, the Proposed PROJECT would construct and operate 1) the ECO Substation Project including a new 500/230/138-kilovolt (kV) ECO Substation, a new 13.3-mile 138 kV transmission line (connecting the ECO Substation with the Boulevard Substation Rebuild), and would rebuild the existing Boulevard Substation to operate at 138/69/12 kV; 2) the Tule Wind Project, including up to 134 wind turbines and associated facilities, including an aboveground and underground cable collection system, collector substation, and an operations and maintenance facility, and an approximate 9.7-mile 138 kV transmission line to interconnect with the proposed Boulevard Substation Rebuild; 3) and the ESJ Gen-Tie Project including an approximate 1-mile 500 kV (or 230 kV) gen-tie from the U.S.-Mexico border approximately 4 miles southeast of the community of Jacumba to interconnect with the proposed ECO Substation. Approval of the Campo, Manzanita, and Jordan wind energy projects will require project level environmental review.

The Joint DEIR/DEIS describes the Proposed PROJECT, evaluates and describes the potential environmental impacts associated with the construction and operation of the Proposed PROJECT, identifies those impacts that could be significant, and presents mitigation measures, which, if adopted, could avoid or minimize these impacts. The Joint DEIR/DEIS also evaluates alternatives to the Proposed PROJECT, including the No Project/No Action Alternative, as required by CEQA and NEPA.

AVAILABILITY OF JOINT DEIR/DEIS

Copies of the Joint DEIR/DEIS are available for review at the following local libraries: Jacumba Public Library, located at 44605 Old Highway 80, Jacumba, California 91934; Campo-Morena Village Branch Library, located at 31356 Highway 94, Campo, California 91906; Potrero Branch Library, located at 24883 Potrero Valley Road, Potrero, California 91963. The DEIR/DEIS is also available on the CPUC and BLM websites at:

<http://www.cpuc.ca.gov/environment/info/dudek/ECOSUB/ECOSUB.htm>

<http://www.blm.gov/ca/st/en/fo/elcentro/nepa/tule.html>