



March 9, 2010

MEMORANDUM

TO: Joan Heredia, Sempra Global

FROM: Mark Tarrall, PE, Project Manager

RE: MUP 09 - ESJ US Transmission Access – Acceptable Access Locations

Dokken Engineering has performed additional corner sight distance studies to determine locations for the ESJ access to Old Highway 80 that will meet the County of San Diego's Department of Public Works criteria for corner intersection sight distance. The County of San Diego requires that a minimum of 600' corner sight distance be available for access points to Old Highway 80 at this location. The study was conducted using field survey data.

It was determined that an access located anywhere between points B-1 (Sta 113+00) and B-3 (Sta 114+175) would meet the corner intersectional sight distance requirements and have a sight distance greater than 600' in both directions. Exhibit 1 shows points B-1 and B-3 and the acceptable range of locations between these two points that will meet corner sight distance criteria. NAD 83 coordinates for points B-1 and B-3 are also shown on Exhibit 1. Exhibits 2-4 are attached for reference, and detail the sight distance in both directions at points B-1 and B-3, as well as an interior location B-2.

Please do not hesitate to contact me should you have any questions.

Regards,

A handwritten signature in black ink that reads 'Mark Tarrall' in a cursive script.

Mark Tarrall, PE
Project Manager



NAD 83 COORDINATES FOR POINTS
 B1 = NORTHING 1807968.950, EASTING 6598001.074
 B2 = NORTHING 1808027.645, EASTING 6598082.234
 B3 = NORTHING 1808071.460, EASTING 6598142.882

APPROXIMATE
 RIGHT OF WAY

APN 661-041-02

A PROPOSED ACCESS POINT LOCATED
 BETWEEN POINTS B-1 AND B-3
 (STA 113+00 TO 114+75) WILL
 MEET COUNTY OF SAN DIEGO CORNER
 SIGHT DISTANCE REQUIREMENTS.
 CORNER SIGHT DISTANCE WILL
 EXCEED 600' IN BOTH DIRECTIONS.

APN 661-041-03

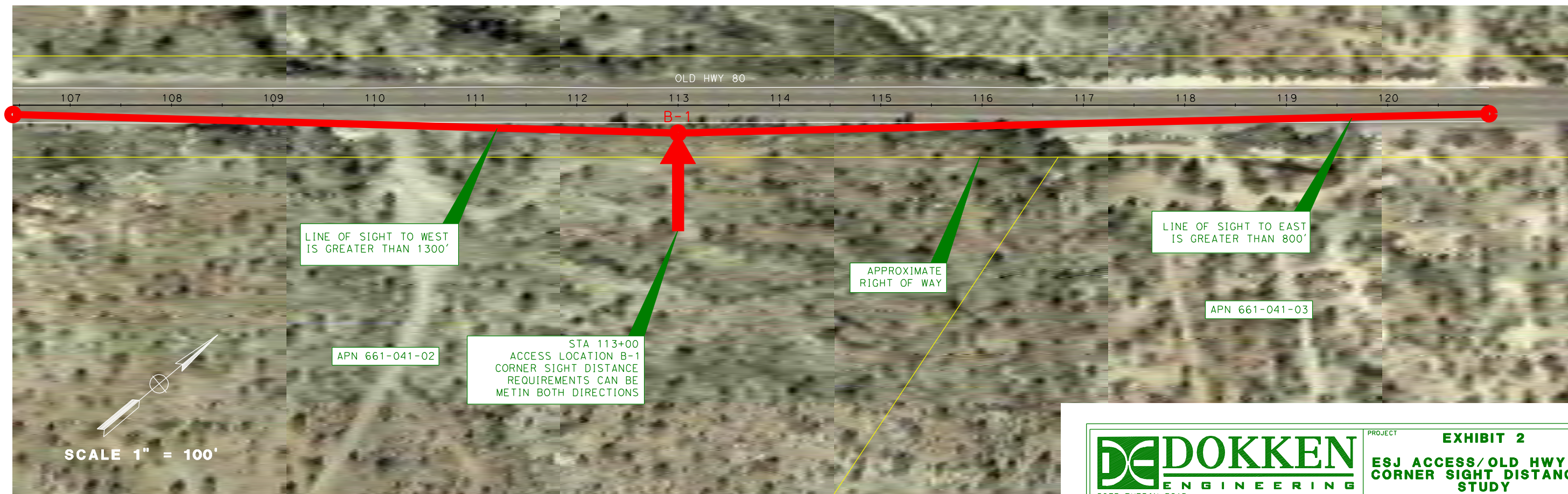
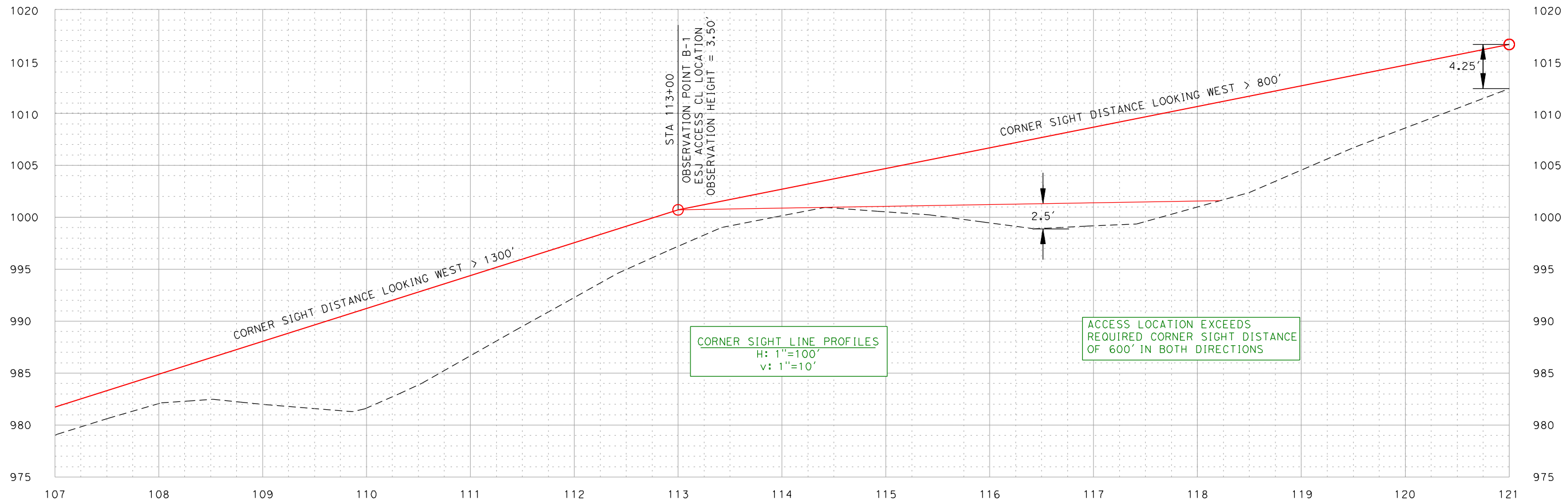
SCALE 1" = 100'

DE DOKKEN
 ENGINEERING

5675 RUFFIN ROAD
 SUITE 250
 SAN DIEGO, CA 92123

(858) 514-8377

PROJECT **EXHIBIT 1**
ESJ ACCESS/OLD HWY 80
CORNER SIGHT DISTANCE
STUDY
ACCESS LOCATION RANGE
MARCH 8, 2010



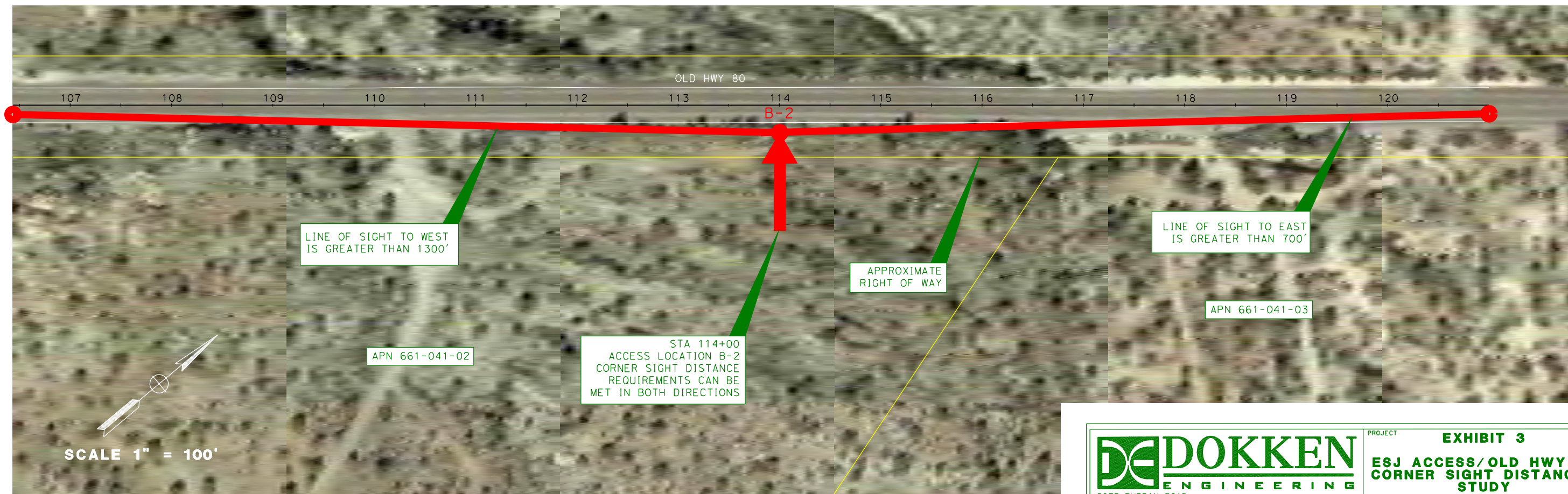
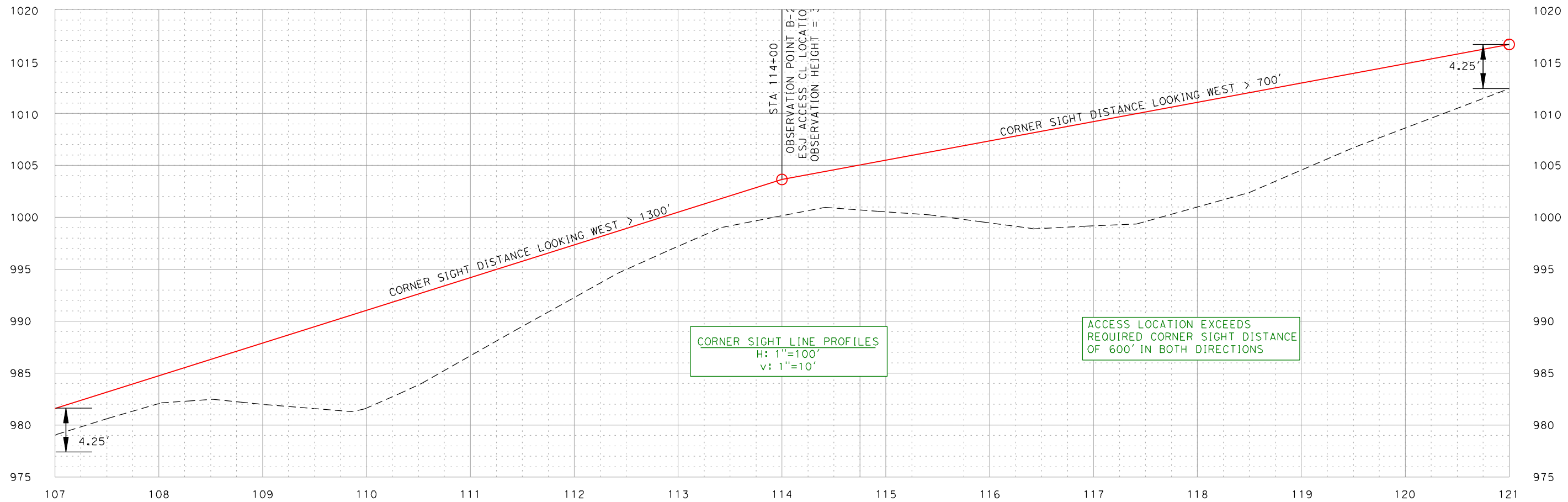
SCALE 1" = 100'

DE DOKKEN
ENGINEERING

5675 RUFFIN ROAD
SUITE 250
SAN DIEGO, CA 92123

(858) 514-8377

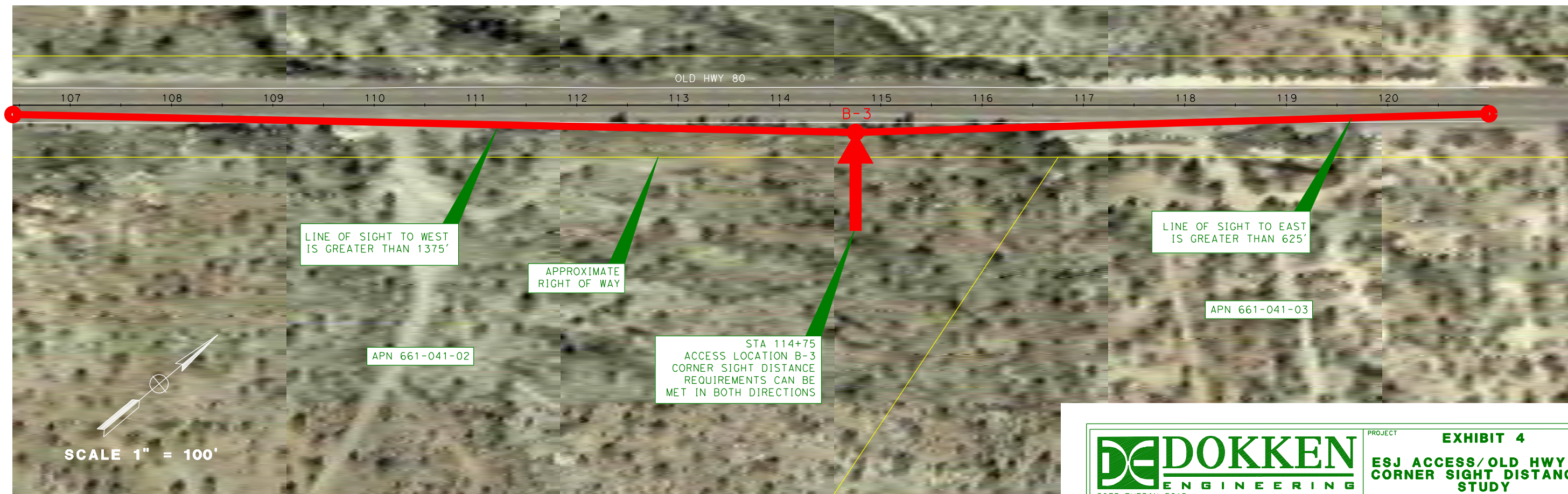
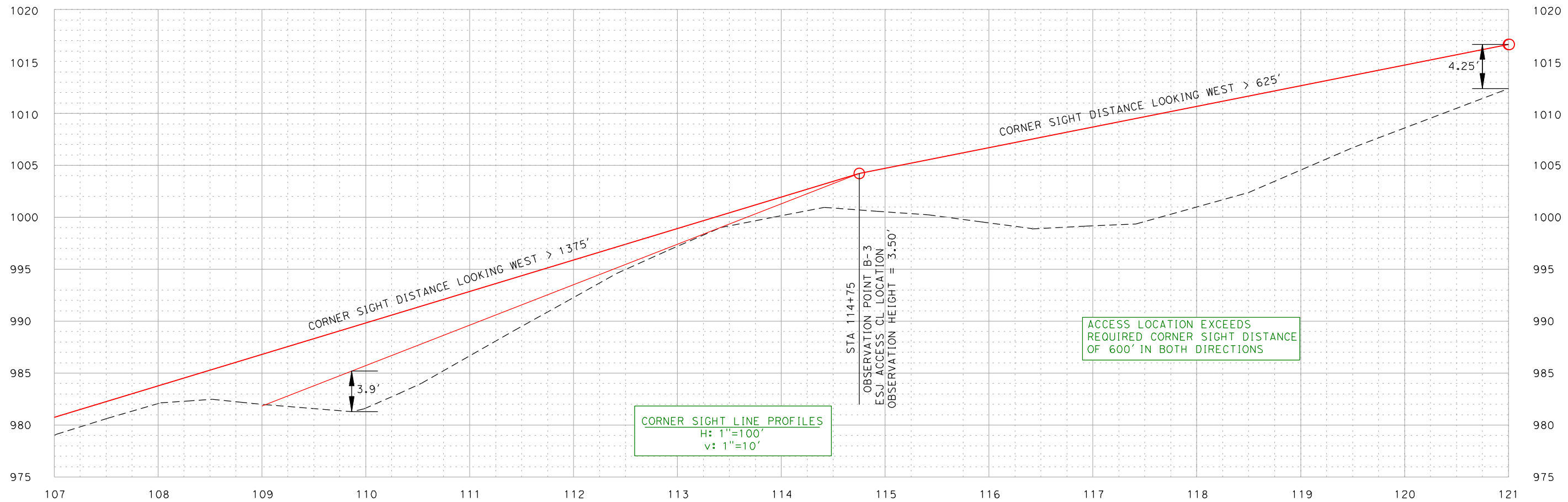
PROJECT **EXHIBIT 2**
ESJ ACCESS/OLD HWY 80
CORNER SIGHT DISTANCE
STUDY
ACCESS LOCATION B-1
MARCH 8, 2010



DE DOKKEN
 ENGINEERING

5675 RUFFIN ROAD
 SUITE 250
 SAN DIEGO, CA 92123 (858) 514-8377

PROJECT **EXHIBIT 3**
ESJ ACCESS/OLD HWY 80
CORNER SIGHT DISTANCE
STUDY
ACCESS LOCATION B-2
MARCH 8, 2010



DE DOKKEN
ENGINEERING

5675 RUFFIN ROAD
SUITE 250
SAN DIEGO, CA 92123

(858) 514-8377

PROJECT **EXHIBIT 4**
ESJ ACCESS/OLD HWY 80
CORNER SIGHT DISTANCE
STUDY
ACCESS LOCATION B-3
MARCH 8, 2010