

PUBLIC UTILITIES COMMISSION

505 VAN NESS AVENUE
SAN FRANCISCO, CA 94102-3298



Ms. Linda Wrazen
Regulatory Case Administrator
San Diego Gas & Electric
8330 Century Park Court,
San Diego, California 92123-1530

November 3, 2010

Subject: Data Request No. 2 – San Diego Gas & Electric (“Applicant”), South Bay Substation Relocation Project (CPCN Application No. 10.06.007)

Dear Ms. Wrazen:

The California Public Utilities Commission (CPUC) has identified additional information required to complete our analysis of the South Bay Substation Relocation Project. Please provide the information requested in Attachment A. We would appreciate your response to this data request no later than November 10, 2010. This will help us maintain our schedule for analysis and processing of your application.

If you have any questions regarding this letter or need additional information, please contact me at 415.703.5484 or jensen.uchida@cpuc.ca.gov.

Sincerely,

A handwritten signature in black ink that reads "Jensen Uchida".

Jensen Uchida
Energy Division, Room 4A

ATTACHMENT A

Data Request No. 2

ATTACHMENT A
Data Request No. 2
South Bay Substation Relocation Project

1. San Diego Fairy Shrimp (*Branchinecta sandiegonensis*) – As indicated in Data Request No. 1, dated October 22, 2010, based on correspondence from the U.S. Fish and Wildlife Service (USFWS), seasonal ponds or basins that hold water are present on site, and these areas have the potential for being occupied by fairy shrimp (federally listed endangered San Diego fairy shrimp). USFWS indicated there are records of multiple pools that are located adjacent to San Diego Bay, just across the bay from the project site. The locations of these sites are available by contacting the USFWS Geographic Information Systems (GIS) Department. In addition, the project site contains soils that are typically associated with vernal pools.

Based on the recent rain events, it is recommended that the surveys are to be started the week of November 1, 2010. The USFWS is aware of the need to conduct the surveys and has indicated they are ready to approve the proposed survey upon request.

In the data response provided by San Diego Gas & Electric (SDG&E) on October 29, 2010, SDG&E indicated that the wet season survey is anticipated to be completed in spring of 2011, and if the results are negative, the dry season survey will be completed in late summer or early fall 2011. Please describe how SDG&E intends to mitigate for the occurrence of fairy shrimp in the event that the results of the surveys indicate they are present.

2. Coastal Development Permit (CDP): SDG&E has determined that the CDP for the project will be issued by the California Coastal Commission (CCC) per the data response provided by SDG&E on October 29, 2010. Please indicate whether any correspondence has occurred between the Port of San Diego, City of Chula Vista, and CCC regarding this determination that has been made by SDG&E. Please provide a summary of any meeting discussions that have been held with the CCC, City of Chula Vista, and Port of San Diego since the filing of the Proponent's Environmental Assessment (PEA) on June 16, 2010, regarding issuance of the CDP.

Please also indicate whether there are any updates regarding whether the project site contains wetland characteristics or other habitats within the project site that are considered environmentally sensitive habitat areas (ESHA) under the California Coastal Act. Please indicate whether the CCC, California Department of Fish and Game (CDFG), and/or U.S. Army Corps of Engineers (ACOE) have provided any direction on this matter.

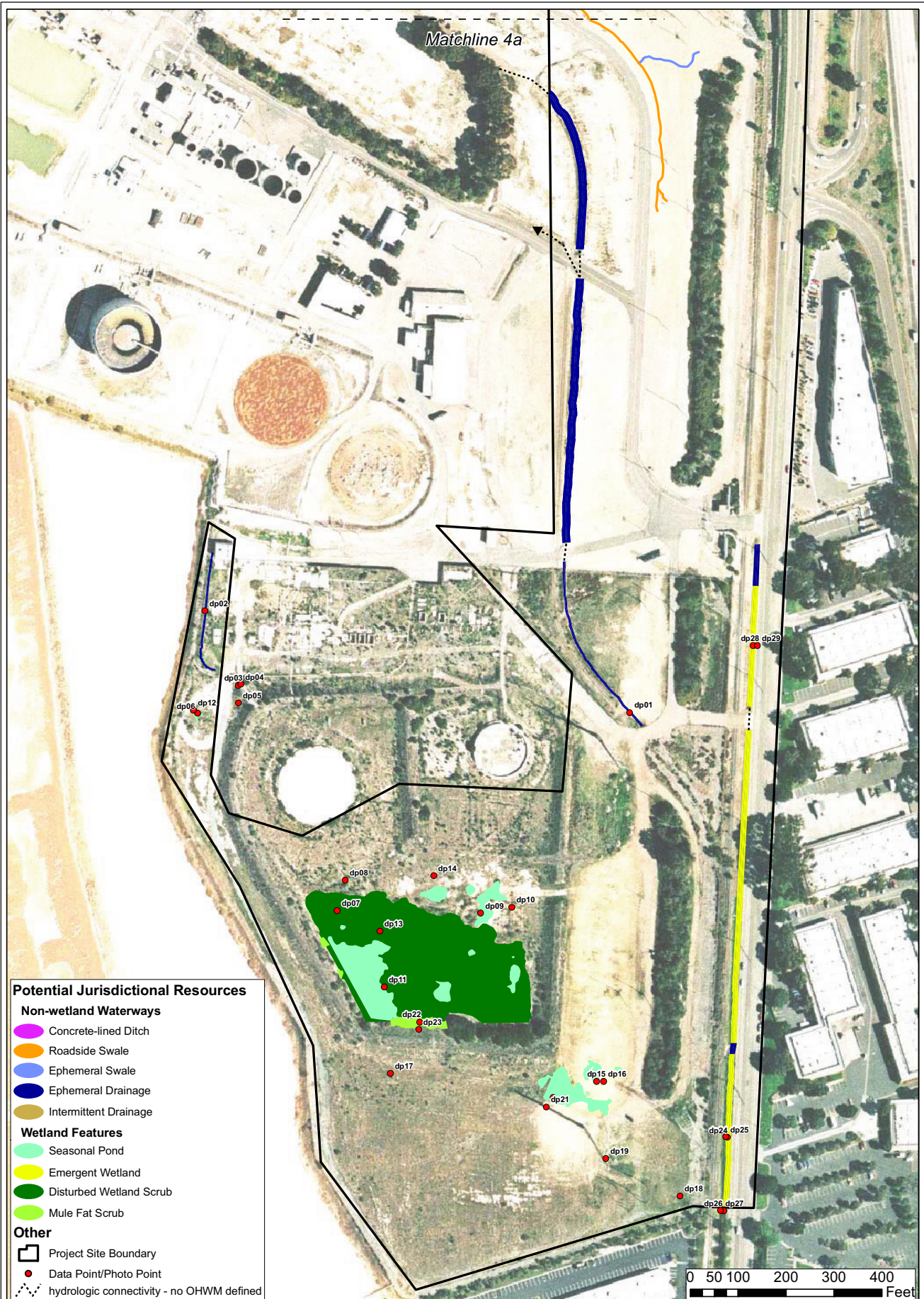
3. Substation Modifications: Response No. 7 provided by SDG&E on October 29, 2010, identified that substation modifications required to accommodate the proposed Bay Boulevard Substation will be provided at a later date. Please provide an update regarding

ATTACHMENT A

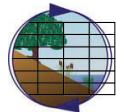
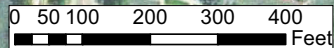
improvements that will be completed at the Telegraph Canyon Substation, Imperial Beach Substation, and Miguel Substation.

4. Jack-and-Bore Pit Construction: Table 3-6 of the PEA indicates approximately 5.2 acres would be disturbed to complete jack-and-bore pit construction. Footnote 13 on Table 3-6 identifies that Telegraph Creek would be crossed using jack-and-bore construction methods, and up to four additional features have been identified that may be crossed using the jack-and-bore method of construction. Please indicate whether the 5.2 acres of temporary disturbance identified in Table 3-6 includes total temporary disturbance for construction activities associated with the five jack-and-bore pit construction areas. Please also provide a map identifying the worst-case footprint of the areas that would be disturbed during construction associated with the five jack-and-bore pit construction areas.
5. Wetland Data Request: Data Request 1 requested the geographic information system (GIS) files that were used to create exhibits included in the Preliminary Jurisdictional Wetland Delineation Report, dated June 11, 2010 (see *Exhibit 1*). The data received by SDG&E in response to this data request does not distinguish the different wetland features (i.e. seasonal pond, emergent wetland, mule fat scrub and disturbed wetland scrub). Please provide the GIS files that distinguish the different wetland features as depicted in *Exhibit 1*.

Exhibit 1



- Potential Jurisdictional Resources**
- Non-wetland Waterways**
- Concrete-lined Ditch
 - Roadside Swale
 - Ephemeral Swale
 - Ephemeral Drainage
 - Intermittent Drainage
- Wetland Features**
- Seasonal Pond
 - Emergent Wetland
 - Disturbed Wetland Scrub
 - Mule Fat Scrub
- Other**
- Project Site Boundary
 - Data Point/Photo Point
 - - - hydrologic connectivity - no OHWM defined



Wetland and Waterway Features (South)
South Bay Substation Relocation Project

Figure 4b