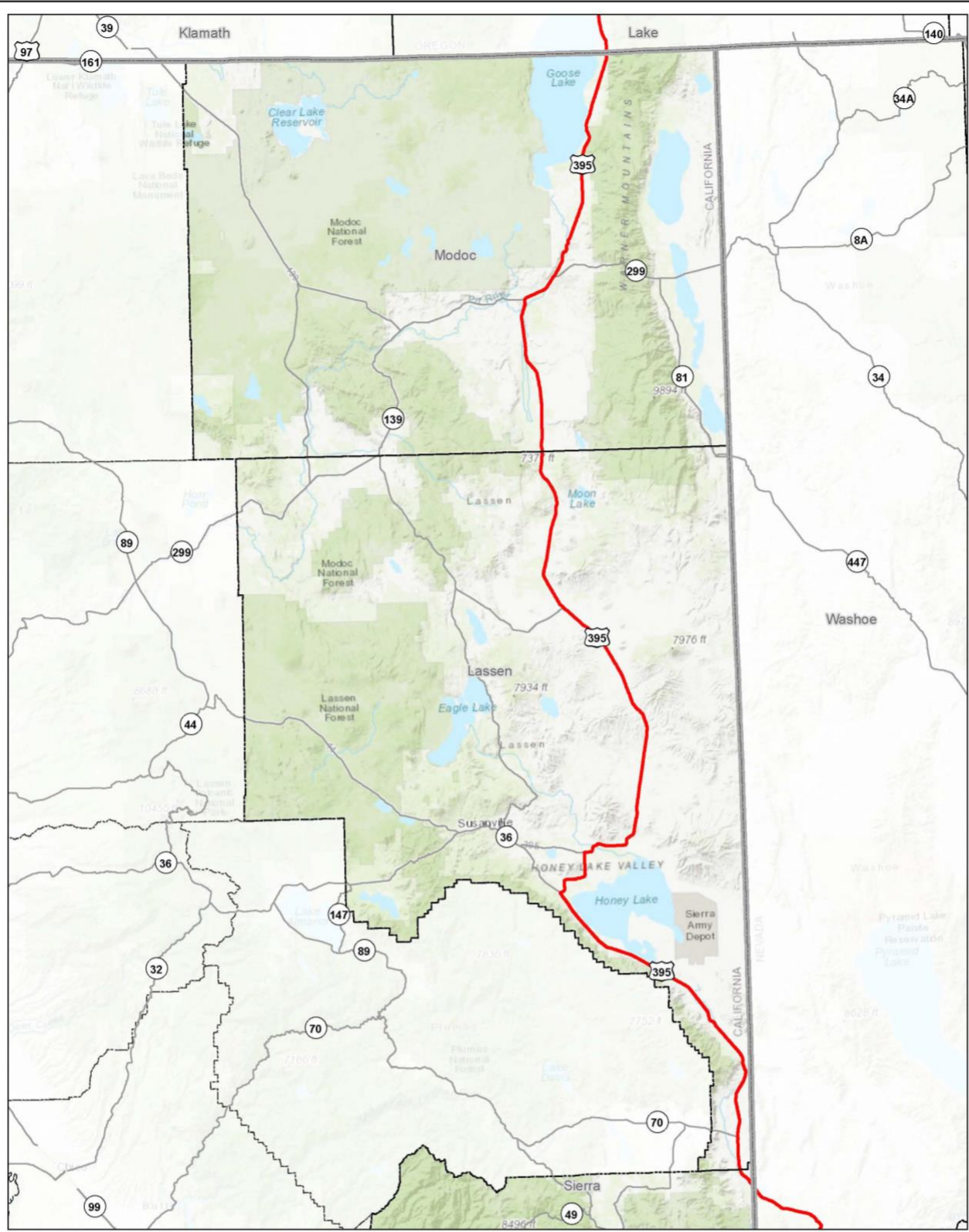


20220601 1:00:00 PM \\GIS\Projects\2022\20220601_1:00:00 PM\Map_Series_20220601_1:00:00 PM.mxd



- Alignment
- Highway
- County Boundary
- State Boundary



Project Location: Prineville, OR to Reno, NV
 Prepared by: JC on 2020-06-19
 Technical Review by: SV on 2020-06-19
 Independent Review by: DW on 2020-06-19

Client/Project:
Zayo
 Fiber Optic Line--Prineville to Reno

Figure No.
3-1
 Title

Project Location
Proposed Prineville to Reno
Fiber Optic Line

Notes
 1. Coordinate System: NAD 1983 UTM Zone 10N
 2. Data source: Esri 2020; CPAD 2019
 3. Service Layer Credits: Sources: Esri, HERE, Garmin, Intermap, increment P Corp., GEBCO, USGS, FAO, NPS, NRCAN, GeBCast, IGN, Kadaster NL, Ordnance Survey, Esri Japan, METI, Esri China (Hong Kong), (c) OpenStreetMap contributors, and the GIS User Community