

Valley-Ivyglen Phase 2 Vegetation and Sensitive Species

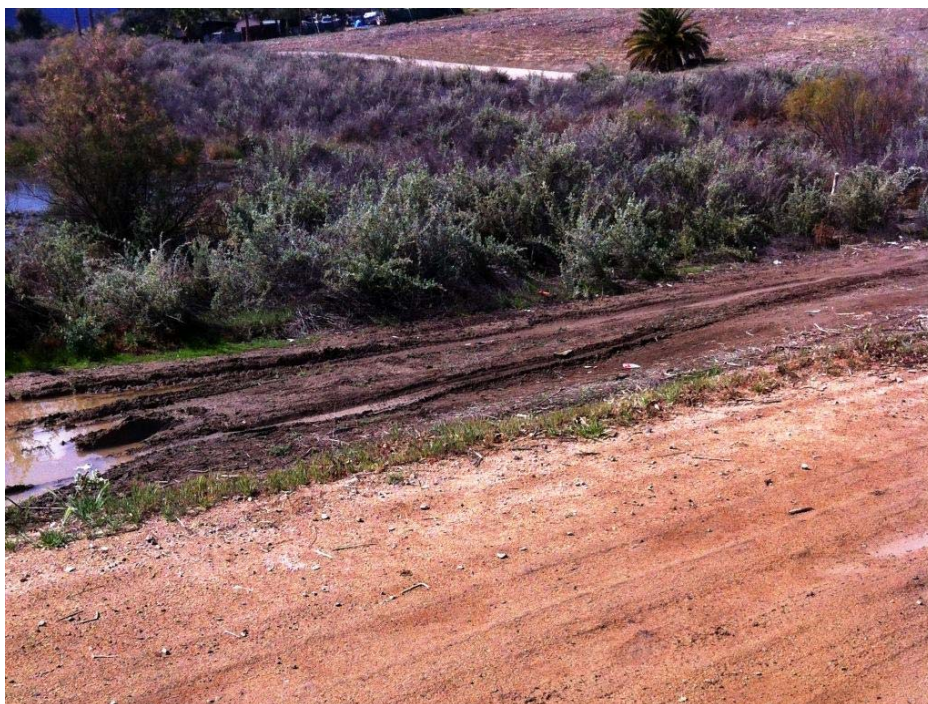


Photo Alkali Marsh. Looking west near the corner of Baker Street and Bromley Avenue, 28 February 2012.



Photo Disturbed Alkali Marsh. Looking south from near the north end of Pasadena Street, 19 June 2013.



Photo Chamise Chaparral. Looking east from within the Richland Tract, 28 February 2012. Interstate 15 in background.



Photo Disturbed Chamise Chaparral (at right). . Near Bolo Court in the Richland Tract, 25 June 2012.



Photo Coast Live Oak Woodland. Temescal Canyon Road near Indian Truck Trail, 8 June 2011.



Photo Coastal and Valley Freshwater Marsh (and Alkali Marsh). Looking north from Baker Street, north of Turnbull Avenue, 10 May 2011.



Photo Mulefat Scrub. Looking east at from near Lake Street and Temescal Canyon Road, 28 June 2012.



Photo Non-native Grassland. Looking northeast from the vicinity of Baker and Pierce Streets. 10 May 2011.



Photo Disturbed Non-native Grassland. Looking south from along Baker Street south of Pierce Street, 22 November 2011.



Photo Open Water. Looking west from near the corner of Baker Street and Bromley Avenue, 1 August 2006.



Photo Residential/Urban/Exotic. Looking south from the edge of the Richland Tract near Horsethief Canyon Road, 25 June 2012.



Photo Riparian Scrub. Looking northwest near Horsethief Canyon Road in the Richland Tract, 25 June 2012.



Photo Riversidean Alluvial Fan Sage Scrub. Looking south near Indian Truck Trail & Temescal Canyon Road, 17 May 2013.



Photo Disturbed Riversidean Alluvial Fan Sage Scrub. Looking south near Temescal Canyon & Hostettler Roads, 6-13-12.



Photo . Riversidean Sage Scrub. Looking west on the Richland Tract, east of Horsethief Canyon Road, 31 January 2012.



Photo . Disturbed Riversidean Sage Scrub. Looking west along Interstate 15 near Temescal Wash undercrossing, 6-25-12.



Photo . Southern Cottonwood/Willow Riparian. Looking west near the intersection of Campbell Ranch & Mayhew Canyon Roads, 9 July 2013.



Photo . Southern Sycamore/Alder Riparian Woodland. Looking south from near the corner of Campbell Ranch Road & Temescal Canyon Road, 14 June 2011.



Photo . Southern Willow Scrub. Looking northwest from vicinity of Third Street and Pasadena Avenue, 3 July 2013.



Photo . Upland Southern Willow Scrub near the corner of Collier and Riverside Avenues (Highway 74). 17 December 2012.



Photo Chaparral Sand-verbena. Temescal Canyon Road near El Hermano Road, 1 June 2012.



Photo . Coulter's Goldfields. Along Baker Street, south of Pierce Street, 5 May 2006.



Photo Matilja Poppy. Near Ivyglen Substation, 6 April 2012.



Photo San Diego Ambrosia. Off Pierce Street near Baker Street, 1 April 2013.



Photo San Jacinto Valley Crownscale. Baker Street area, 28 July 2006



Photo Small-flowered Morning Glory. Off Nichols Road near Coal Avenue, 27 March 2013.



Photo Smooth Tarplant. Vicinity of Third Street and Pasadena Avenue, 26 April 2013.



Photo White Rabbit-tobacco, Richland Tract, 1 June 2012.



Photo Western Spadefoot Toad tadpole. Near Nichols Road and Lake Street, 12 April 2011.



Photo Coastal Western Whiptail. In the vicinity of El Hermano and Temescal Canyon Roads, 6 April 2012.



Photo Orange-throated Whiptail. Southeast of the intersection of Lake Street and Nichols Road, 26 March 2013.



Photo Red Diamond Rattlesnake. Near Temescal Canyon and El Hermano Roads, 6 April 2012.



Photo Bald Eagle. Near Temescal Canyon Road and Indian Truck Trail, 13 June 2012.



Photo San Diego Desert Woodrat. Near Temescal Canyon and El Hermano Roads, 2 June 2012.

