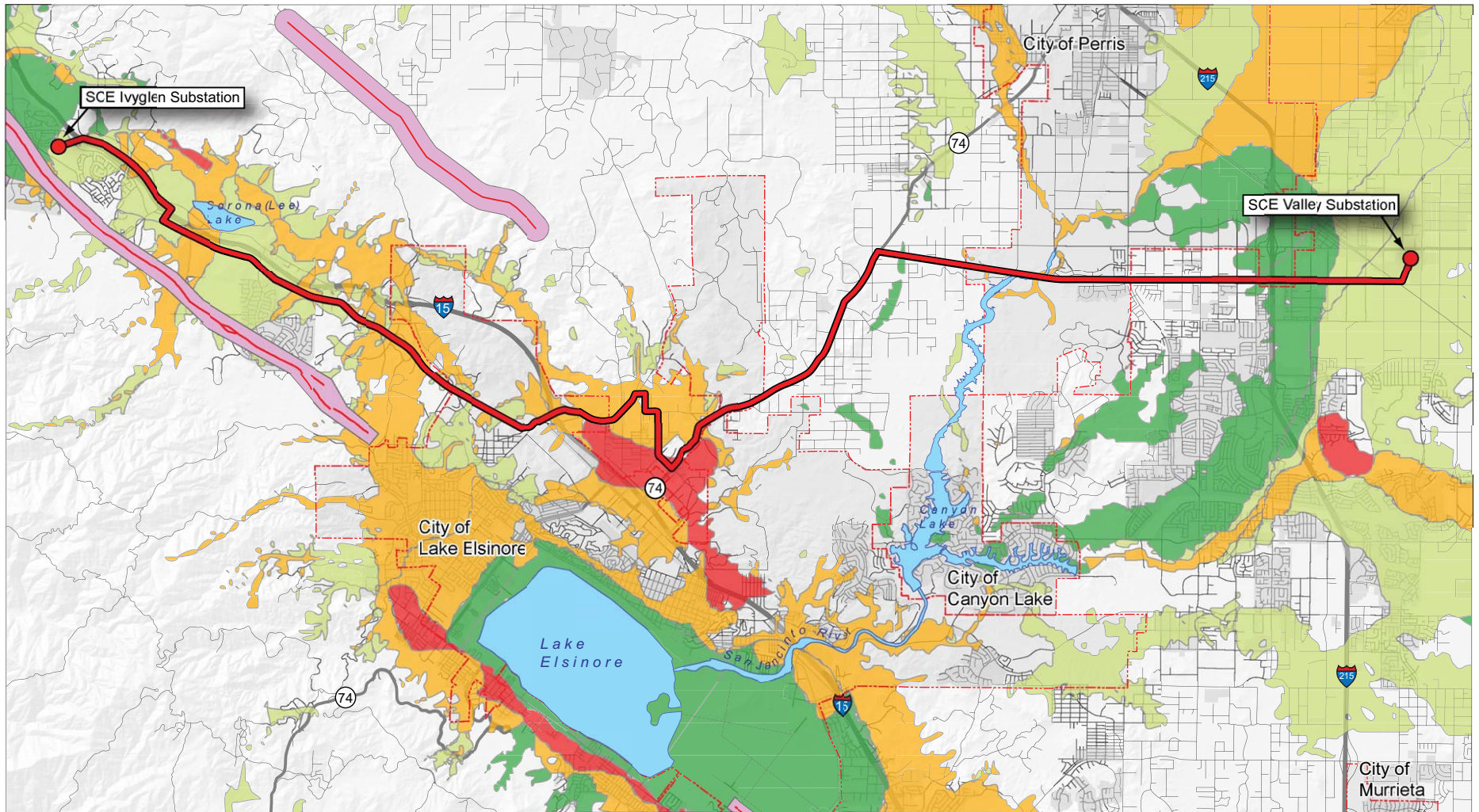


Reference: Fig. 4.7-5, Fault Hazard and Geologic Hazard Zones, Proponent's Environmental Assessment, SCE & MHA, 2007



SOURCE: Earth Consultants International 2000, Southern California Edison 2006, and MHA Environmental Consulting, Inc. 2006

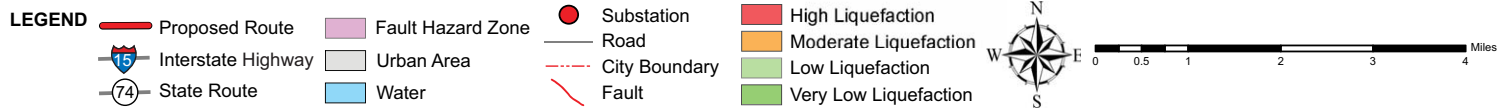


Figure D.6-4
Fault Hazard and Geologic Hazard Zones