

ATTACHMENT C: PHOTOGRAPHS OF IMPACTED WATER FEATURES



Photograph 1:
Overview of ephemeral drainage Feature 7-39-S-5, facing upstream/east.



Photograph 2:
Overview of ephemeral drainage Feature 7-39-S-5, facing downstream/west.



Photograph 3:
Ephemeral drainage
Feature 7-39-S-5, facing
upstream/east.



Photograph 4:
Ephemeral drainage
Feature 7-39-S-5, facing
downstream/west.



Photograph 5:
Ephemeral drainage
Feature 11-94-S-5, facing
downstream/west.



Photograph 6:
Ephemeral drainage
Feature 11-94-S-5, facing
south.



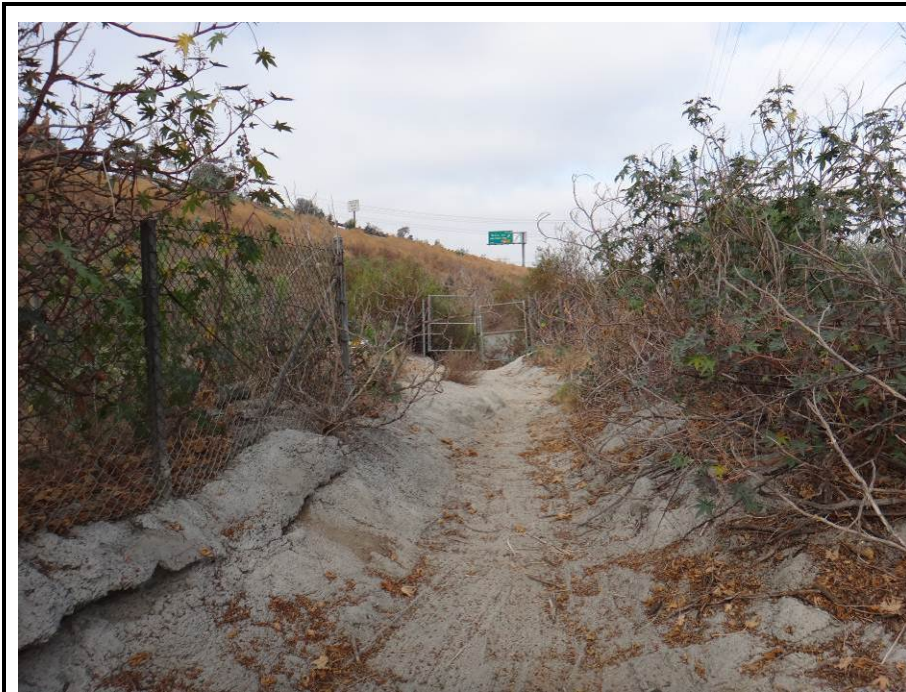
Photograph 7:
Ephemeral drainage
Feature 11-138-S-100,
western portion facing
upstream/north.



Photograph 8:
Ephemeral drainage
Feature 11-138-S-100,
facing upstream/east.



Photograph 9:
Ephemeral drainage
Feature 11-138-S-100,
facing downstream/west.



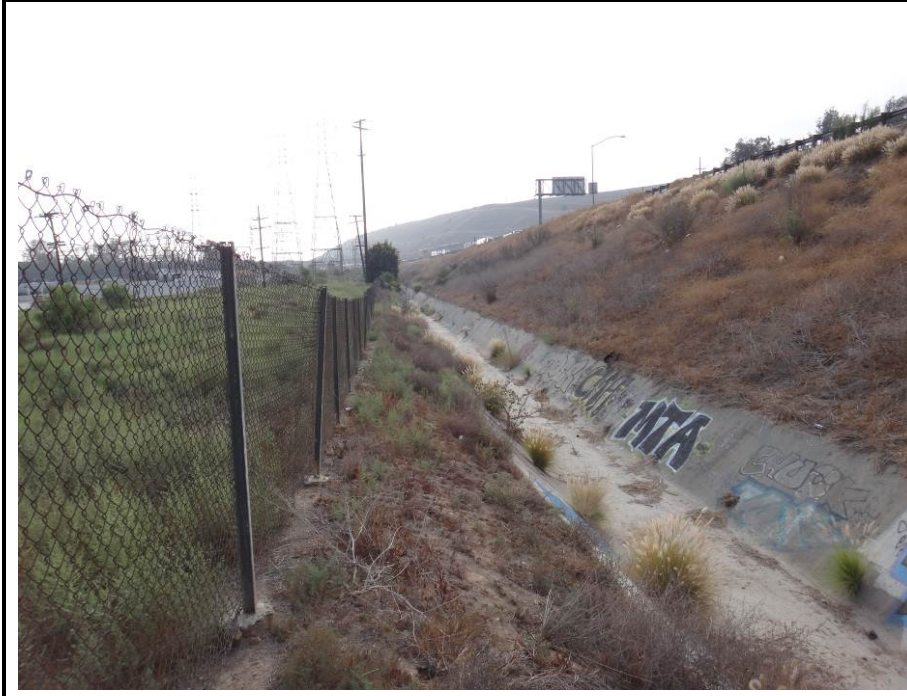
Photograph 10:
Confluence of ephemeral
drainages features 7-39-
S-6 and 11-138-S-100,
facing downstream/west.



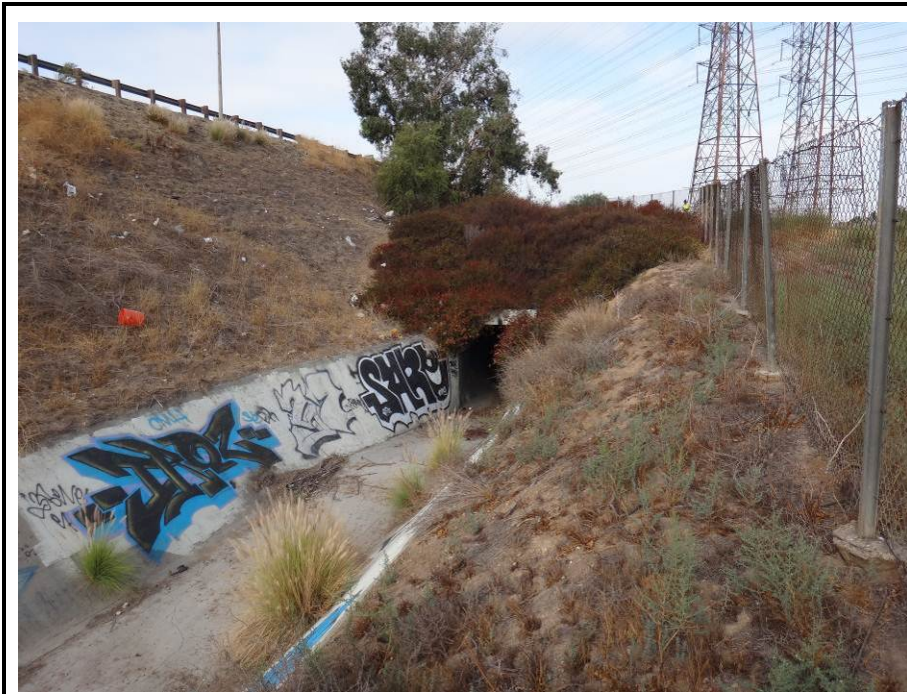
Photograph 11:
Ephemeral drainage
Feature 7-39-S-6, facing
upstream/northeast.



Photograph 12:
Ephemeral drainage
Feature 7-39-S-6, facing
downstream/southwest.



Photograph 13:
Off-site continuation of
ephemeral drainage
Feature 7-39-S-6, facing
upstream/east.



Photograph 14:
Off-site continuation of
ephemeral drainage
Feature 7-39-S-6 and
culvert under State Route
60, facing
downstream/west.



Photograph 15:
Ephemeral drainage
Feature 7-39-S-1, facing
downstream/west.



Photograph 16:
Ephemeral drainage
Feature 7-39-S-1, facing
downstream/west.



Photograph 17:
Ephemeral drainage
Feature 7-39-S-1, facing
upstream/northeast.



Photograph 18:
Ephemeral drainage
Feature 7-39-S-1, facing
downstream/southwest.



Photograph 19:
Ephemeral drainage
Feature 7-39-S-2, facing
downstream/northwest.



Photograph 20:
Ephemeral drainage
Feature 7-39-S-2, facing
upstream/southeast.



Photograph 21:
Ephemeral drainage
Feature 7-39-S-3, taken
from above the culvert,
facing downstream/west.



Photograph 22:
Ephemeral drainage
Feature 7-39-S-3, facing
the culvert and
upstream/east.



Photograph 23:
Culvert at the upstream
portion of ephemeral
drainage Feature 11-136-
S-101, facing north.



Photograph 24:
Ephemeral drainage
Feature 11-136-S-101,
facing downstream/south.



Photograph 25:
Upstream portion of
ephemeral drainage
Feature 7-38-S-1, taken
from west side of
Greenwood Road, facing
upstream/east.



Photograph 26:
Ephemeral drainage
Feature 11-136-S-100,
facing upstream/north.



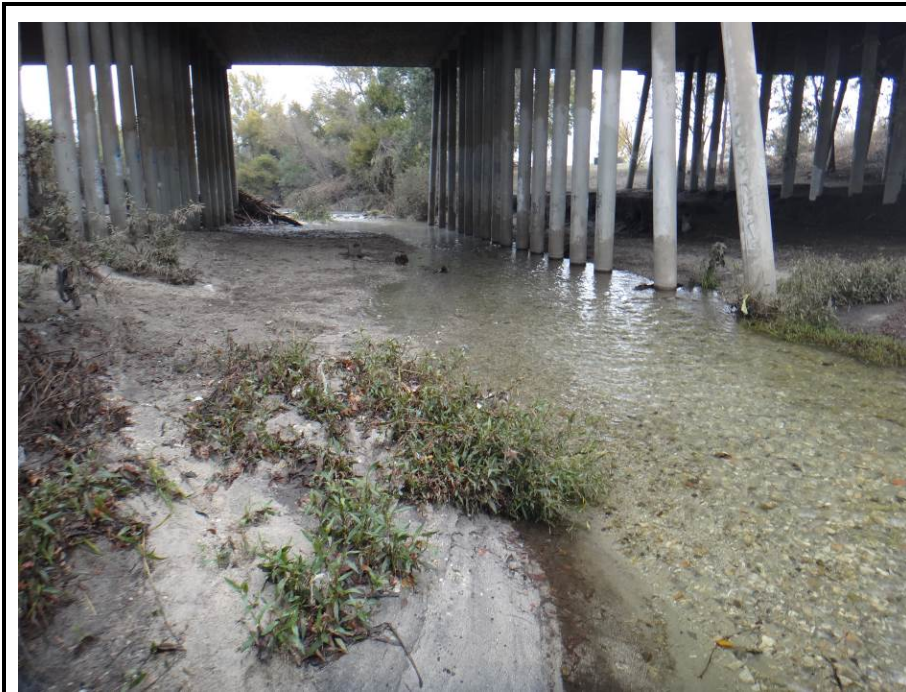
Photograph 27:
Ephemeral drainage
Feature 11-136-S-100,
facing downstream/south.



Photograph 28:
Northern dirt-lined
portion of ephemeral
drainage Feature 11-136-
S-100, facing
upstream/north.



Photograph 29:
Northern dirt-lined
portion of ephemeral
drainage Feature 11-136-
S-100, facing
downstream/south.



Photograph 30:
Intermittent drainage
Feature 7-39-S-11 (Rio
Hondo), facing
upstream/northeast.



Photograph 31:
Intermittent drainage
Feature 7-39-S-11 (Rio
Hondo), facing
downstream/southwest.