

Scoping Meeting

Environmental Impact Report

**Southern California Edison**

**Mesa 500-kV Substation Project**

Application No. 15-03-003

---

**California Public Utilities Commission**

June 23, 2015



# Presentation Overview

- Purpose of Meeting
- CEQA and the EIR Process
- SCE's Purpose and Need
- Overview of the Proposed Project
- Environmental Topics
- Comment Period



# Purpose of Meeting

- Inform the public and responsible and trustee government agencies about the project
- Describe the environmental review process
- Solicit input on the scope of issues, alternatives, and mitigation to be addressed in the Environmental Impact Report (EIR)



# CEQA and EIR Process

- Roles
  - California Public Utilities Commission is lead agency under the California Environmental Quality Act (CEQA)
    - In order to issue a Permit to Construct the CPUC must conduct environmental analysis
    - Ecology and Environment, Inc., is the environmental consultant to CPUC and will prepare the EIR
  - SCE is the project applicant



# CEQA and EIR Process

- Purpose of EIR
  - Disclose potential impacts of the proposed project and alternatives
  - Identify mitigation to reduce adverse impacts
  - Consider a reasonable range of alternatives to the proposed project
  - Give the public an opportunity to provide input
  - Provide information for decision makers to consider



Process per CEQA (Public Resources Code §21000 et seq.) and CEQA Guidelines

Process per Public Utilities Code and CPUC Rules of Practice and Procedure



# Looking Forward: EIR Process

Stage	Objectives	Schedule Estimate
<b>Scoping</b>	<ul style="list-style-type: none"> <li>• Collect comments from public and agencies on scope of EIR</li> </ul>	June 5 to July 5, 2015, 5:00 p.m. (30 days)
<b>Draft EIR Preparation</b>	<ul style="list-style-type: none"> <li>• Conduct analysis of proposed project's environmental impacts.</li> <li>• Develop and analyze reasonable range of alternatives.</li> </ul>	September 2015
<b>Draft EIR Public Review</b>	<ul style="list-style-type: none"> <li>• Collect comments from public and agencies on analysis and alternatives in EIR</li> <li>• Public meeting</li> </ul>	September to October 2015 (45 days)
<b>Final EIR with Response to Comments</b>	<ul style="list-style-type: none"> <li>• Respond to public comments on Draft EIR</li> <li>• Revise Draft EIR as needed</li> </ul>	February 2016

# SCE's Stated Purpose and Need

- Address reliability concerns resulting from the recent retirement of the San Onofre Nuclear Generation Station (SONGS) and from Once Through Cooling (OTC) shutdowns expected by December 31, 2020
- Allow greater flexibility in siting generation projects to meet local reliability needs in the Western Los Angeles Basin while reducing amount of new generation required by providing additional transmission import capability
- Maintain or improve system reliability within the Electrical Needs Area
- Meet proposed project needs while minimizing environmental impacts



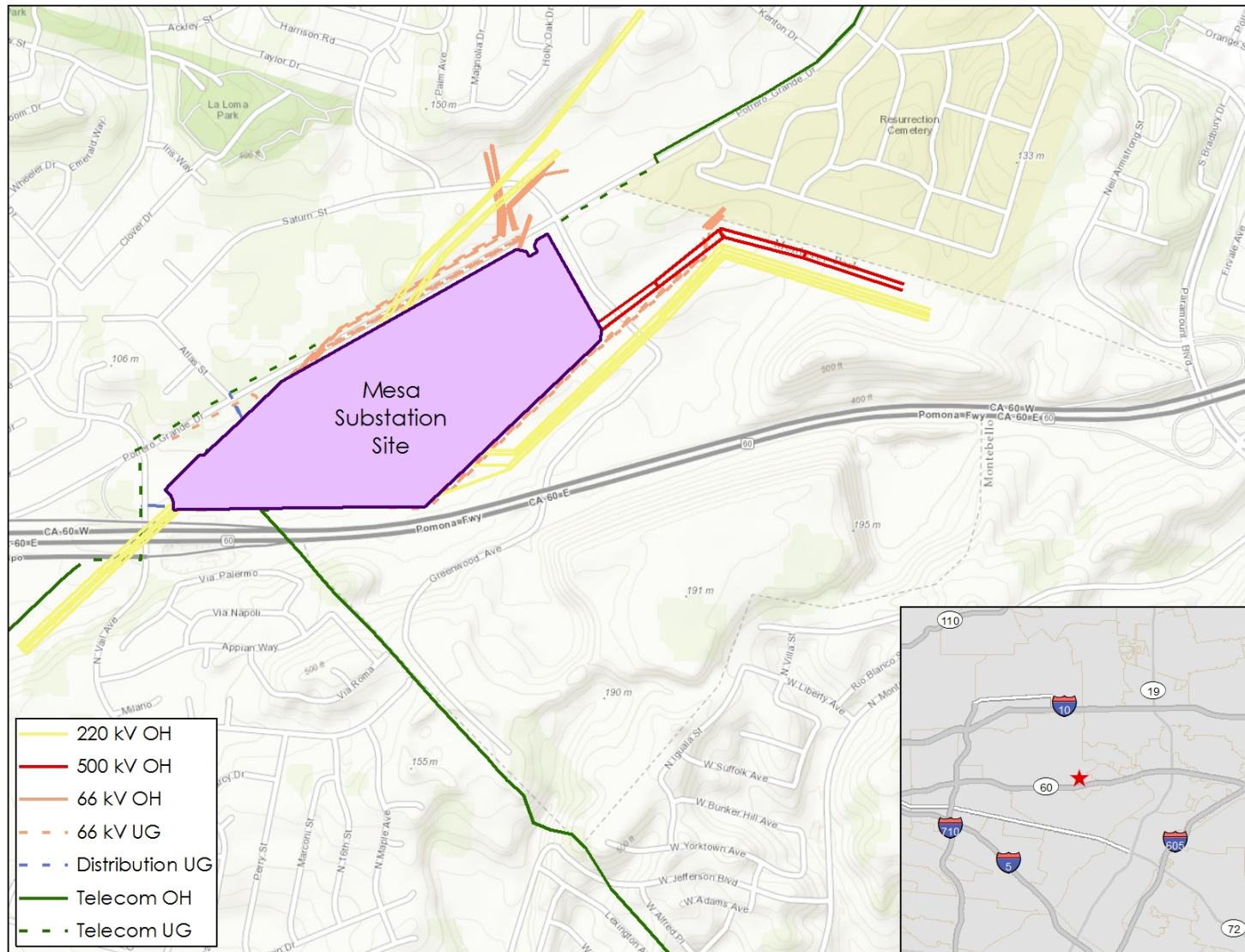


# SCE's Stated Purpose and Need

- Comply with all applicable reliability planning criteria required by North American Electric Reliability Corporation (NERC), Western Electricity Coordinating Council (WECC), and California Independent System Operator (CAISO)
- Design and construct the proposed project in conformance with SCE's approved engineering, design, and construction standards for substation, transmission, subtransmission, distribution, and telecommunications system projects



# Overview of the Proposed Project



# Project Description: Major Components

- Upgrade existing 220-kV Mesa Substation to 500/220-kV
  - Substation footprint will increase from 22 acres to 69 acres
  - SCE currently owns most of the substation site, which is about 86 acres, and will acquire two small adjacent parcels
  - **Existing 220-kV substation must remain in operation while constructing new 500-kV substation**
- Remove, replace, and relocate existing Metropolitan Water District 72-inch-diameter water line with an 84-inch-diameter waterline
- SCE estimates construction will take about five years; to begin approximately June 2016



# Project Description: Other Components

## Work within and adjacent to Mesa Substation site

Component	Actions
500-kv Transmission	<ul style="list-style-type: none"> <li>• Remove 1 overhead structure</li> <li>• Relocate <math>\leq 3</math> overhead structures</li> <li>• Approximate height of 140 to 200 feet</li> </ul>
220-kV Transmission	<ul style="list-style-type: none"> <li>• Replace <math>\sim 17</math> overhead structures</li> <li>• Approximate height of 100 to 190 feet</li> </ul>
66-kV Subtransmission	<ul style="list-style-type: none"> <li>• Remove <math>\sim 65</math> overhead structures</li> <li>• Install <math>\sim 24</math> overhead structures, <math>\sim 27,400'</math> of underground duct, <math>\sim 28</math> underground vaults (10' x 20' x 8')</li> <li>• Approximate height of 50 to 100 feet</li> <li>• Net reduction of 41 structures</li> </ul>
16-kV Distribution	<ul style="list-style-type: none"> <li>• Install <math>\sim 5,000'</math> of underground duct and <math>\sim 5</math> underground vaults (7' x 18' x 8')</li> <li>• Install station light and power supplies</li> </ul>

# Project Description: Other Components

Work required in other locations	
Component	Actions
Temporary Electric Supply	<ul style="list-style-type: none"> <li>• Install temporary steel pole and conductor at existing substation to provide electric service to Pasadena during planned outage</li> </ul>
220-kV Upgrades at Existing Substations	<ul style="list-style-type: none"> <li>• Replace or upgrade 220-kV equipment at 13 existing substations</li> </ul>
66-kV Upgrades at Existing Substations	<ul style="list-style-type: none"> <li>• Upgrade 66-kV equipment at 16 existing substations</li> </ul>
Tower Replacement	<ul style="list-style-type: none"> <li>• Replace tower with taller tower in Commerce</li> </ul>
Underground Conversion	<ul style="list-style-type: none"> <li>• Underground existing streetlight source line</li> </ul>



# Project Description: Other Components

Minor telecommunications work	
Component	Actions
Fiber optic	<ul style="list-style-type: none"> <li>• Reroute to clear Mesa Substation</li> <li>• Mostly on existing poles or in existing ducts</li> </ul>
New telecommunications line	<ul style="list-style-type: none"> <li>• Install two new lines into Mesa Substation mostly on existing poles or in existing ducts</li> <li>• Located partially in Whittier Narrows Recreation Area, triggering NEPA review/coordination with federal agency (U.S. Army Corps of Engineers)</li> </ul>
Telecommunications reroute	<ul style="list-style-type: none"> <li>• Reroute existing telecommunications within fence lines of three existing substations</li> </ul>



# CEQA Alternatives

- EIR must assess alternatives
  - Feasible
  - Meet the basic project objectives
  - Reduce a significant impact
- Reasonable range of alternatives
- No project alternative



# Environmental Topics in EIR

- Aesthetics
- Agriculture and forestry resources
- Air quality/greenhouse gas emissions
- Biological resources
- Cultural resources
- Geology and soils
- Hazards and hazardous materials
- Hydrology and water quality
- Land use and planning
- Mineral resources
- Noise
- Population and housing
- Public services (fire, police, schools, parks)
- Recreation
- Transportation and traffic
- Utilities and Service Systems
- Cumulative impacts





# How to Comment

- Fill out and submit a comment card tonight
- Submit comments by mail, fax, e-mail, or voicemail

Mail	Email
<p style="text-align: center;">Lisa Orsaba California Public Utilities Commission RE: Mesa 500-kV Substation Project c/o Ecology and Environment, Inc. 505 Sansome Street, Suite #300 San Francisco, CA 94111</p>	Mesa.CPUC@ene.com
	Fax
	(415) 398-5326
	Voicemail
(844) 538-6992	

- Verbal comments tonight
- Comments due by **5:00 p.m. on July 5, 2015**  
Website for more info: <http://tinyurl.com/mesasubstation>



# Effective Scoping Comments

- Some of the most helpful scoping comments identify:
  - Location and extent of probable environmental impacts of the proposed project
  - Specific topics that should be discussed in the EIR
  - Mitigation measures that could reduce impacts
  - Alternatives that could reduce impacts of the proposed project
- Less effective comments are those that
  - Suggest a general topic of discussion for the EIR
  - Suggest a vague alternative
  - Speak to the merit of the project



# How to Comment

- Fill out and submit a comment card tonight
- Submit comments by mail, fax, email, or voicemail

Mail	Email
<p style="text-align: center;">Lisa Orsaba California Public Utilities Commission RE: Mesa 500-kV Substation Project c/o Ecology and Environment, Inc. 505 Sansome Street, Suite #300 San Francisco, CA 94111</p>	Mesa.CPUC@ene.com
	Fax
	(415) 398-5326
	Voicemail
(844) 538-6992	

- Verbal comments tonight
- Comments due by **5:00 p.m. on July 5, 2015**  
Website for more info: <http://tinyurl.com/mesasubstation>



# Environmental Topics in EIR

- Aesthetics
- Agriculture and forestry resources
- Air quality/greenhouse gas emissions
- Biological resources
- Cultural resources
- Geology and soils
- Hazards and hazardous materials
- Hydrology and water quality
- Land use and planning
- Mineral resources
- Noise
- Population and housing
- Public services (fire, police, schools, parks)
- Recreation
- Transportation and traffic
- Utilities and Service Systems
- Cumulative impacts

