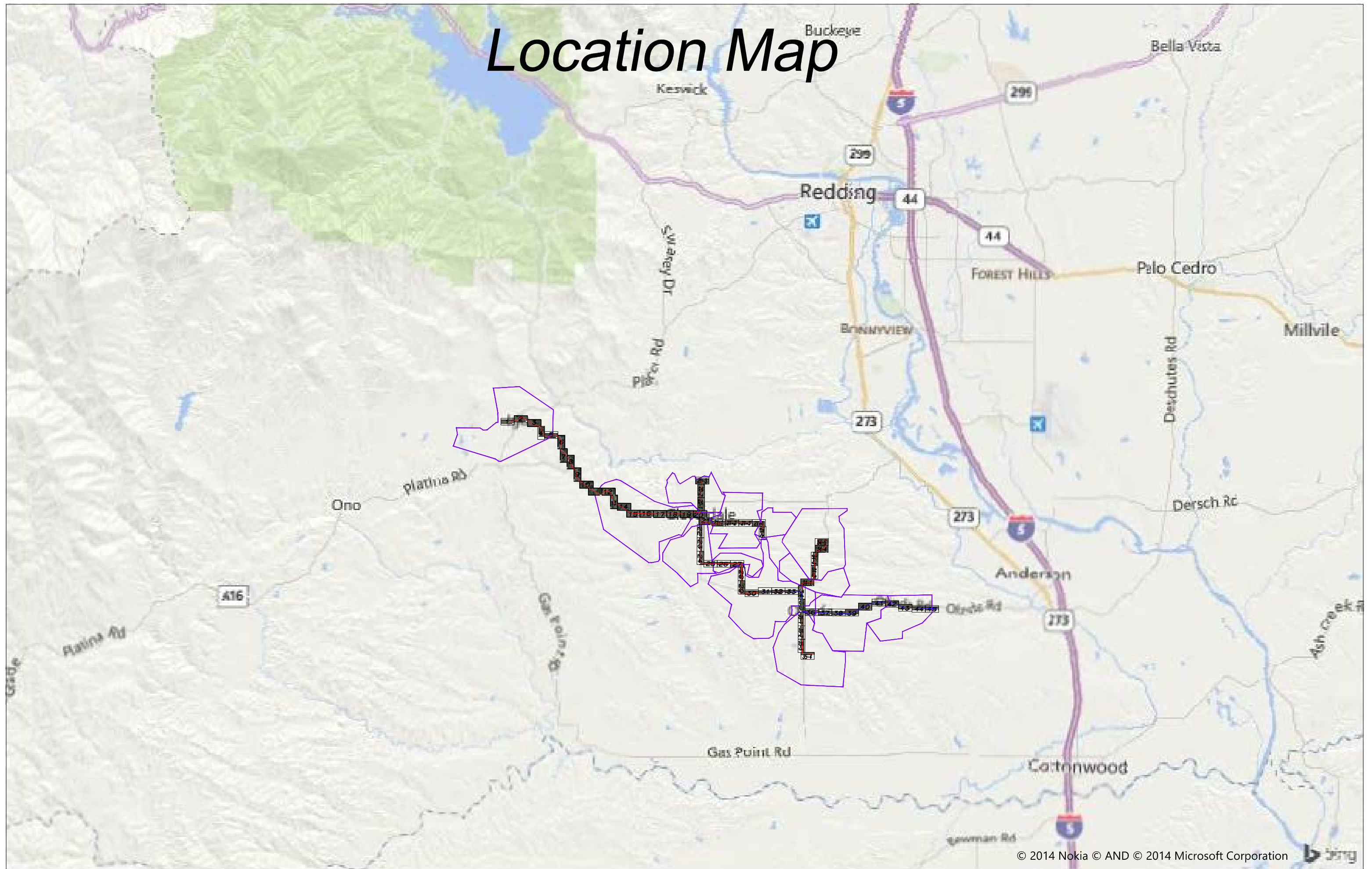
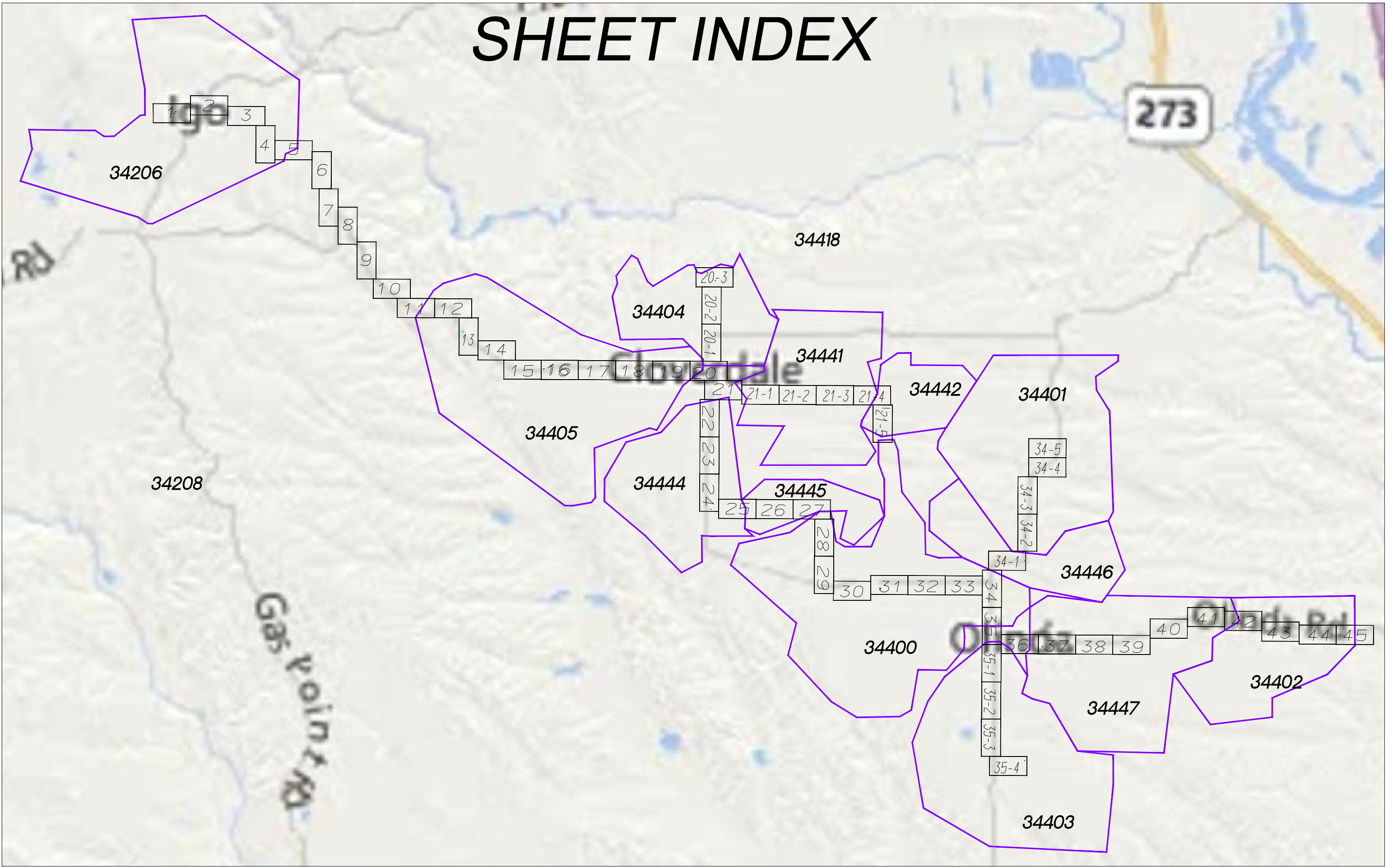

APPENDIX A. PROJECT PLANS

Location Map



SHEET INDEX



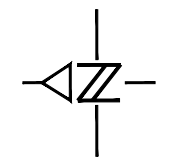


ID 20-2

ID 20.1-1

ID 20.1-2

ID 20.1-3



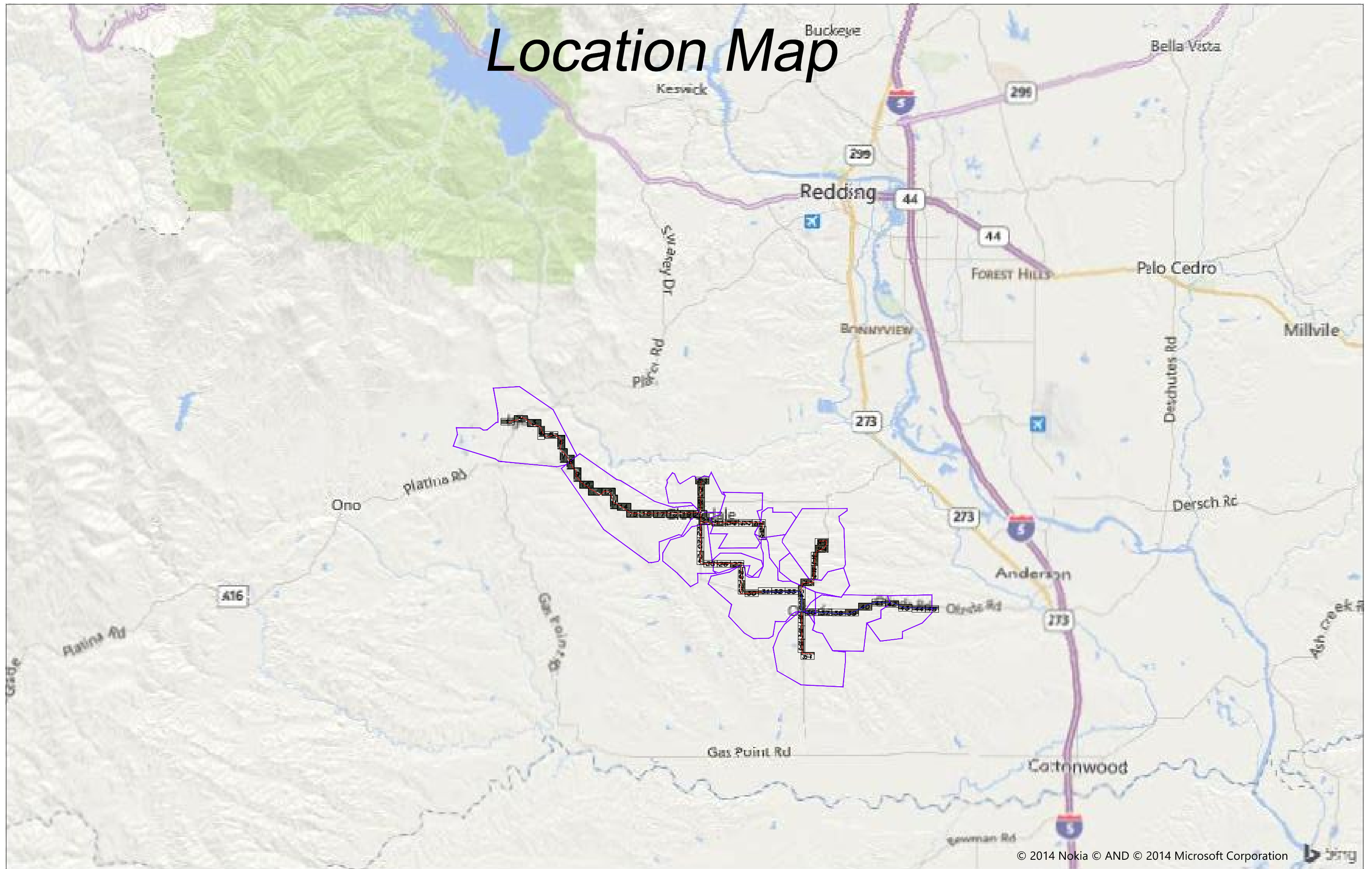
NOT TO SCALE

UNDERGROUND UTILITIES HAVE BEEN PLOTTED FROM FIELD OBSERVATIONS BUT ARE NOT NECESSARILY EXACT. IT IS THE CONTRACTORS RESPONSIBILITY TO FIELD LOCATE ALL UNDERGROUND OBSTRUCTIONS AND UTILITIES PRIOR TO CONSTRUCTION. COMPLETE REPAIR OF ANY AND ALL DAMAGES INCURRED SHALL BE AT THE EXPENSE OF THE CONTRACTOR.

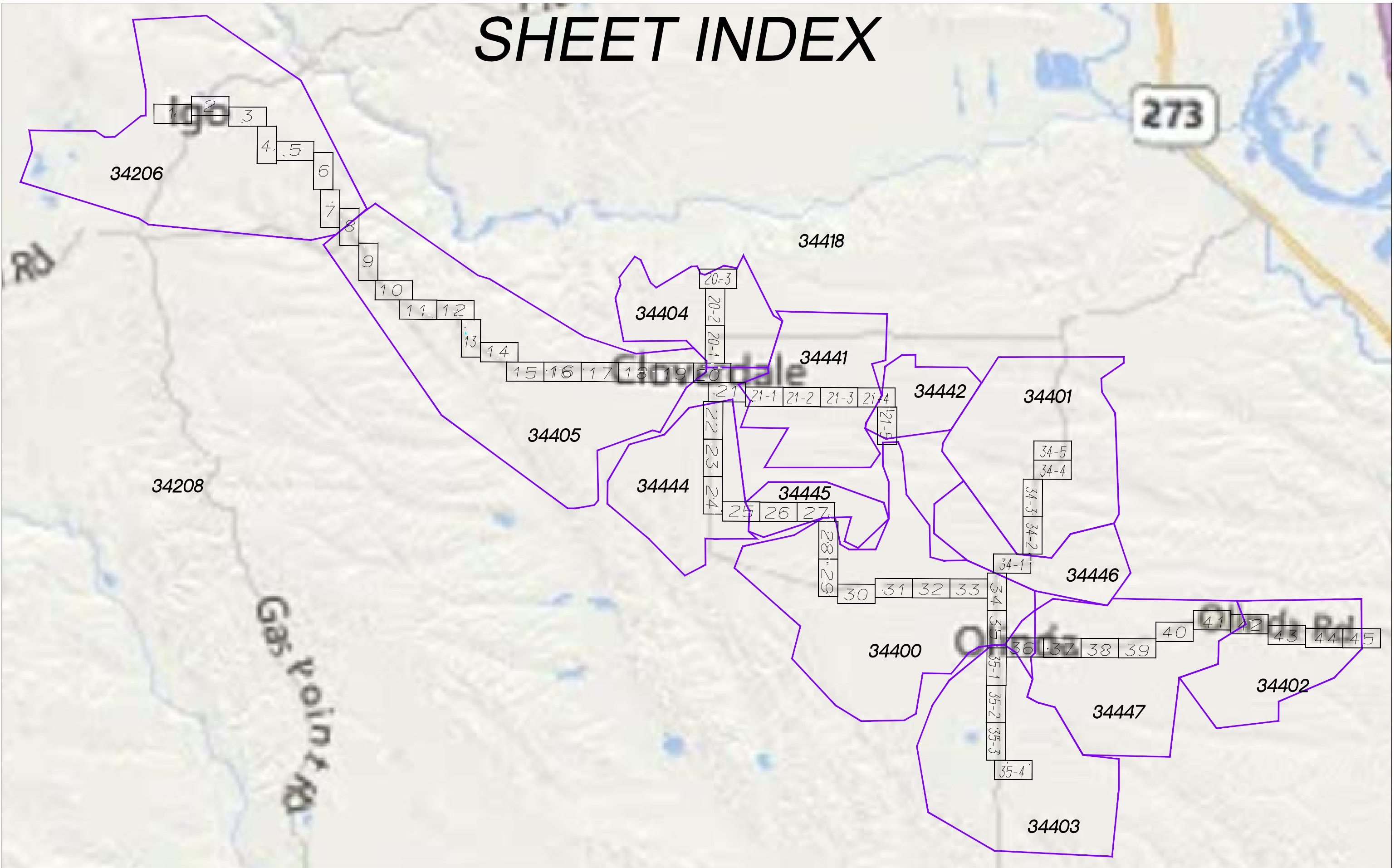


POLES / PEDS				CABLE				POLE LINE & PED HARDWARE															
POLE/ PED NO.		BD / HA	BG / PG	LEAD ANGLE	POLE LENGTH CLASS	YEAR		JOINT															
TEL CO.	FOR CO.					SET	REM	%	W/														
0+00																							

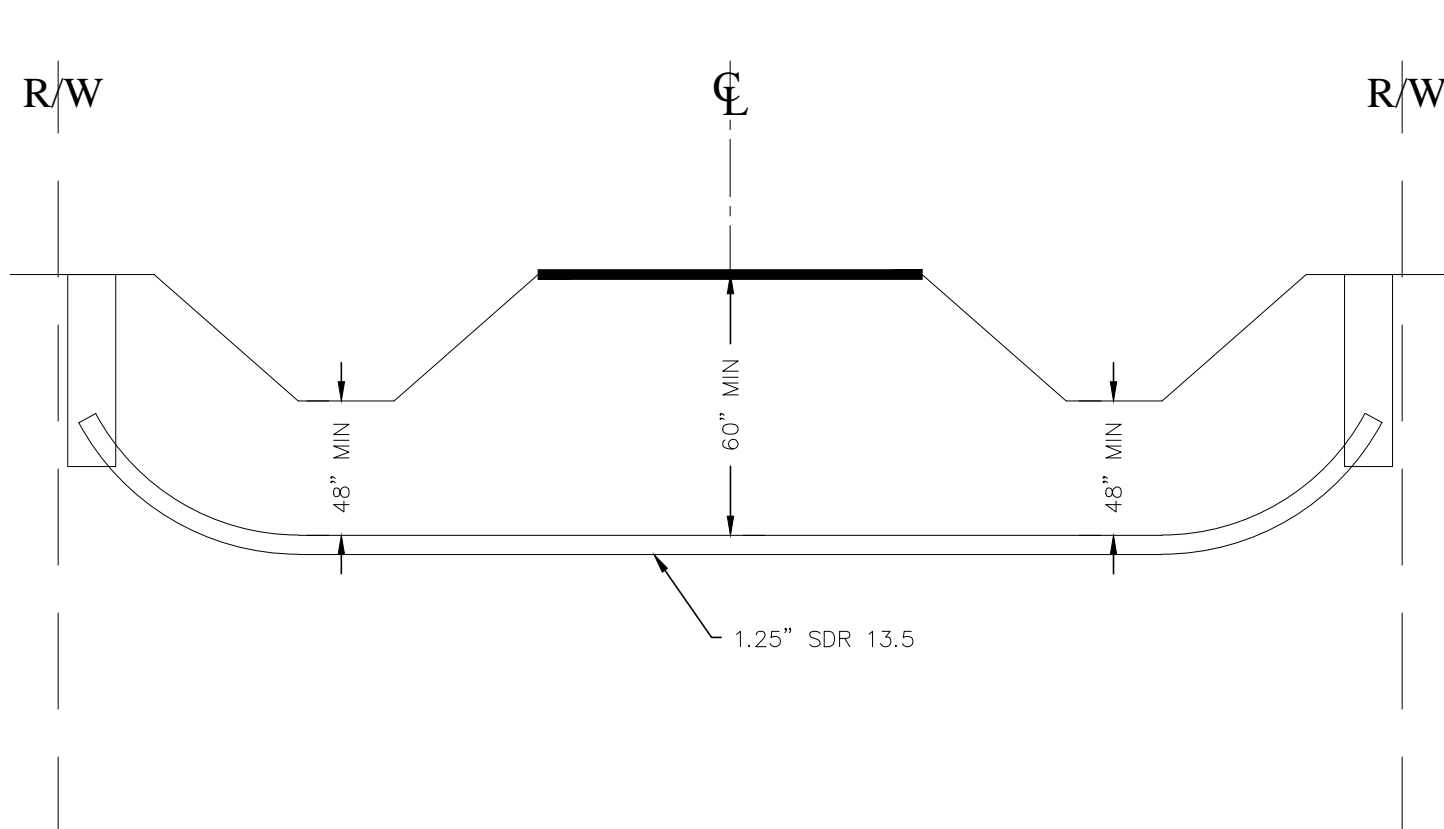
Location Map



SHEET INDEX



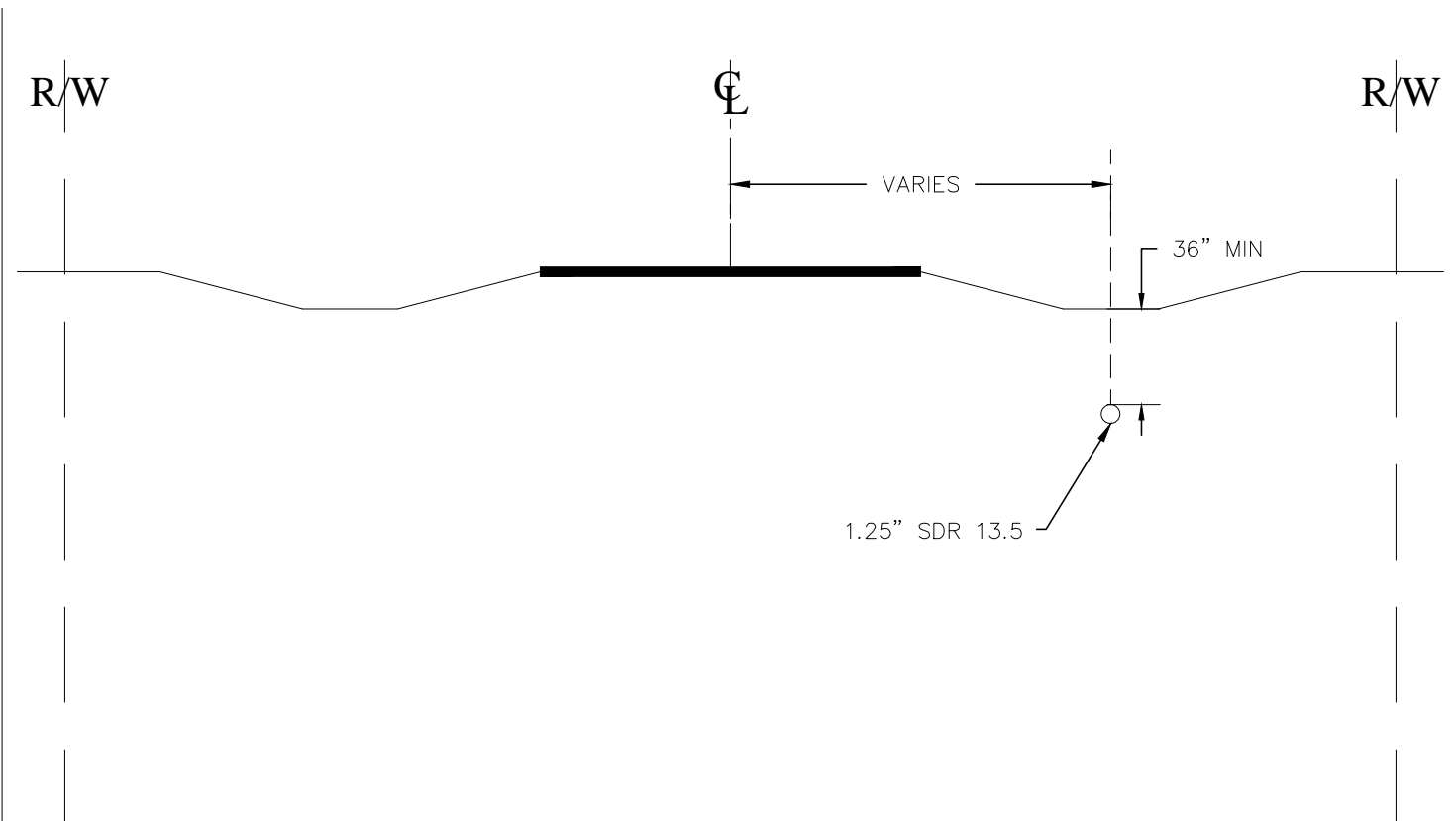
TYPICAL SECTIONS



TYPICAL BORE PROFILE

NOTES:

1. Crossing will be made utilizing directional bore methodology.
2. Depth to top of duct will be a minimum of forty-eight inches (48") below bottom of ditch
3. Depth to top of duct will be a minimum of sixty inches (60") below hard road surface.
4. Entry and Exit locations on each side of roadway will be dug down to depth of running line as required and care will be taken to return pits to original or better condition.



TYPICAL PARALLEL PROFILE

NOTES:

1. Minimum depth from ground to top of duct will be 36"
2. Placement shall be by directional bore, plow or trench methodology
3. When trenching or plowing, warning tape shall be placed 12" above top of duct
4. Running line shown on sheets subject to change due to location of existing utilities

NOT TO SCALE





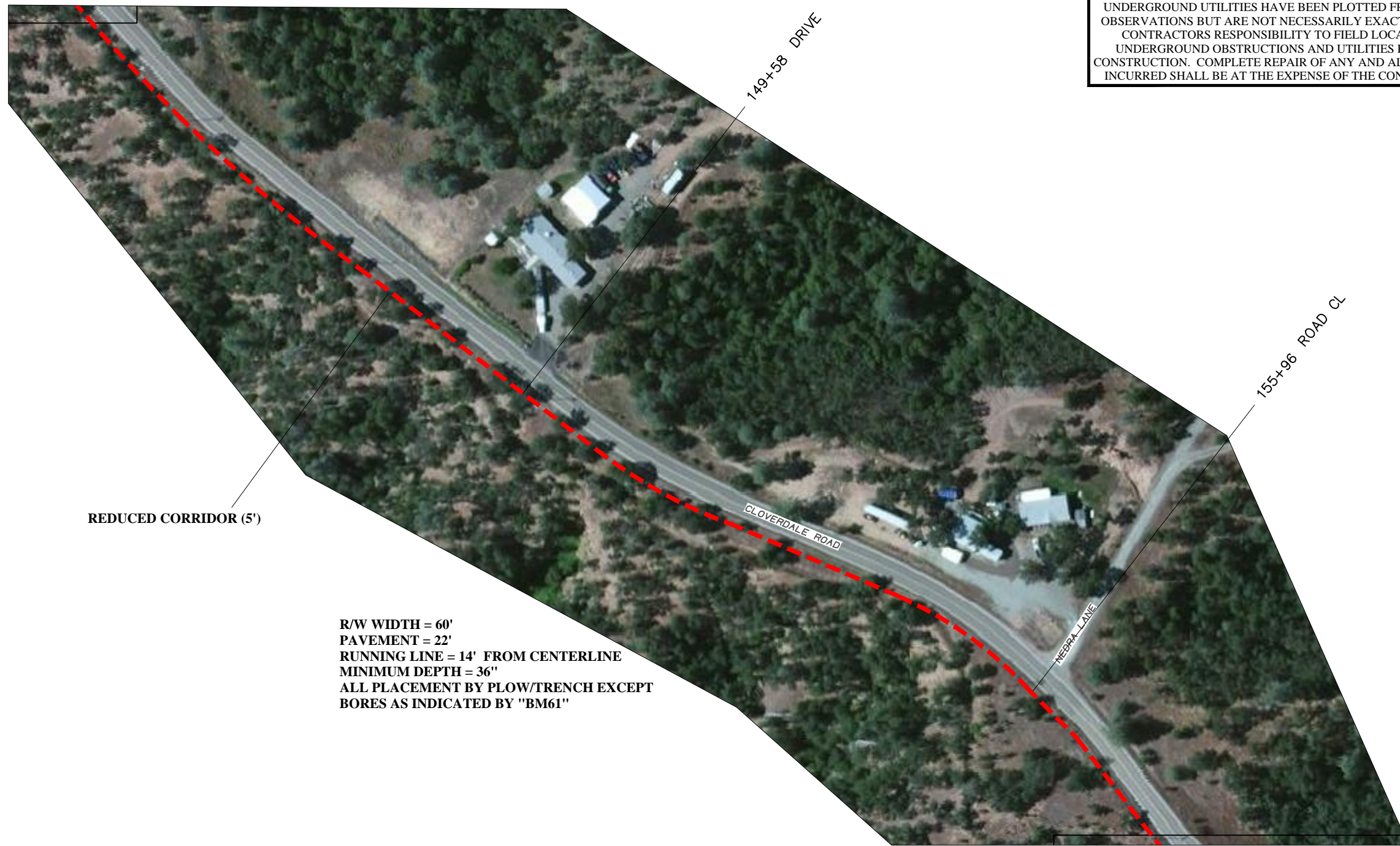
R/W WIDTH = 45'
PAVEMENT = 24'
RUNNING LINE = 21' FROM CENTERLINE
MINIMUM DEPTH = 36"
ALL PLACEMENT BY PLOW/TRENCH
EXCEPT BORES AS INDICATED BY "BM61"

UNDERGROUND UTILITIES HAVE BEEN PLOTTED FROM FIELD OBSERVATIONS BUT ARE NOT NECESSARILY EXACT. IT IS THE CONTRACTORS RESPONSIBILITY TO FIELD LOCATE ALL UNDERGROUND OBSTRUCTIONS AND UTILITIES PRIOR TO CONSTRUCTION. COMPLETE REPAIR OF ANY AND ALL DAMAGES INCURRED SHALL BE AT THE EXPENSE OF THE CONTRACTOR.



POLES / PEDS				CABLE				POLE LINE & PED HARDWARE																		
POLE / PED NO.		BD / HA	BG / PG	LEAD ANGLE	POLE LENGTH CLASS	YEAR				BFO (96)	BFOI (96)	BFOV (1)(1.25)	BFOV (2)(2)	BM2 (5/8)(8)	BM 20	BM 53	BM 61	BM71					HBFO (96)	HO 1	WBH	
TEL CO.	FOR CO.					SET	REM	%	W/																	
0+00	C.O.	BH2							150				1	1										1	96	
0+00	HH1	BH4 / BD3							100	80		84	1		1		20									
5+40										550	550					540										
6+92										156	156				1											
TOTAL		1 / 1							250	786	706	84	2	1	2	620	20							1	96	

SHEET 9

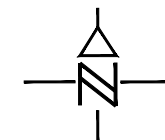


UNDERGROUND UTILITIES HAVE BEEN PLOTTED FROM FIELD OBSERVATIONS BUT ARE NOT NECESSARILY EXACT. IT IS THE CONTRACTOR'S RESPONSIBILITY TO FIELD LOCATE ALL UNDERGROUND OBSTRUCTIONS AND UTILITIES PRIOR TO CONSTRUCTION. COMPLETE REPAIR OF ANY AND ALL DAMAGES INCURRED SHALL BE AT THE EXPENSE OF THE CONTRACTOR.

SHEET 10 OF 45
EX. ROUTE EA
MAP REF. 344020
COUNTY: SHASTA
TOWNSHIP:
TAX DISTRICT: 344500
MUNICIPALITY: IGO
TWN/RGE 30N / 6W
SEC. 2
STAKED BY FARR
DATE 10/14
DRAFTED BY FARR
DATE 10/14
W.O. TC-CA344ENG-001
REV
REV
REV
FILE:

REDUCED CORRIDOR (5')

R/W WIDTH = 60'
 PAVEMENT = 22'
 RUNNING LINE = 14' FROM CENTERLINE
 MINIMUM DEPTH = 36"
 ALL PLACEMENT BY PLOW/TRENCH EXCEPT
 BORES AS INDICATED BY "BM61"



NOT TO SCALE



SHEET 11

POLES / PEDS				CABLE										POLE LINE & PED HARDWARE											
POLE/ PED NO.		BD / HA	BG / PG	LEAD ANGLE	POLE LENGTH CLASS	YEAR				JOINT				BFO (96)	BFOI (96)	BFOV (1)(1.25)	BFOV (2)(2)	BM2 (5/8)(8)	BM 20	BM 53	BM 61	BM71	HBFO (96)	HO 1	WBH
TEL CO.	FOR CO.					SET	REM	%	W/																
143+50	SHT 9																								
155+96	ROAD												1284	1284				2							
TOTAL													1284	1284				2							



SHEET 14

MATCH
END BORE 207+40
ROAD CL 206+98
BEGIN BORE 206+72

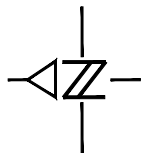
END BORE 204+67
DRIVE 204+18
ROAD CL 202+99

DRIVE 202+14
BEGIN BORE 201+64

PP 200+80

R/W WIDTH = 60'
PAVEMENT = 22'
RUNNING LINE = 14' FROM CENTERLINE
MINIMUM DEPTH = 36"
ALL PLACEMENT BY PLOW/TRENCH EXCEPT BORES AS INDICATED BY "BM61"

SHEET 13 OF 45
EX. ROUTE EA
MAP REF. 344017
COUNTY: SHASTA
TOWNSHIP:
TAX DISTRICT: 344500
MUNICIPALITY: CLOVERDALE
TWN/RGE 30N/6W
SEC. 1
STAKED BY FARR
DATE 10/14
DRAFTED BY FARR
DATE 10/14
W.O. TC-CA344ENG-001
REV
REV
REV
FILE:

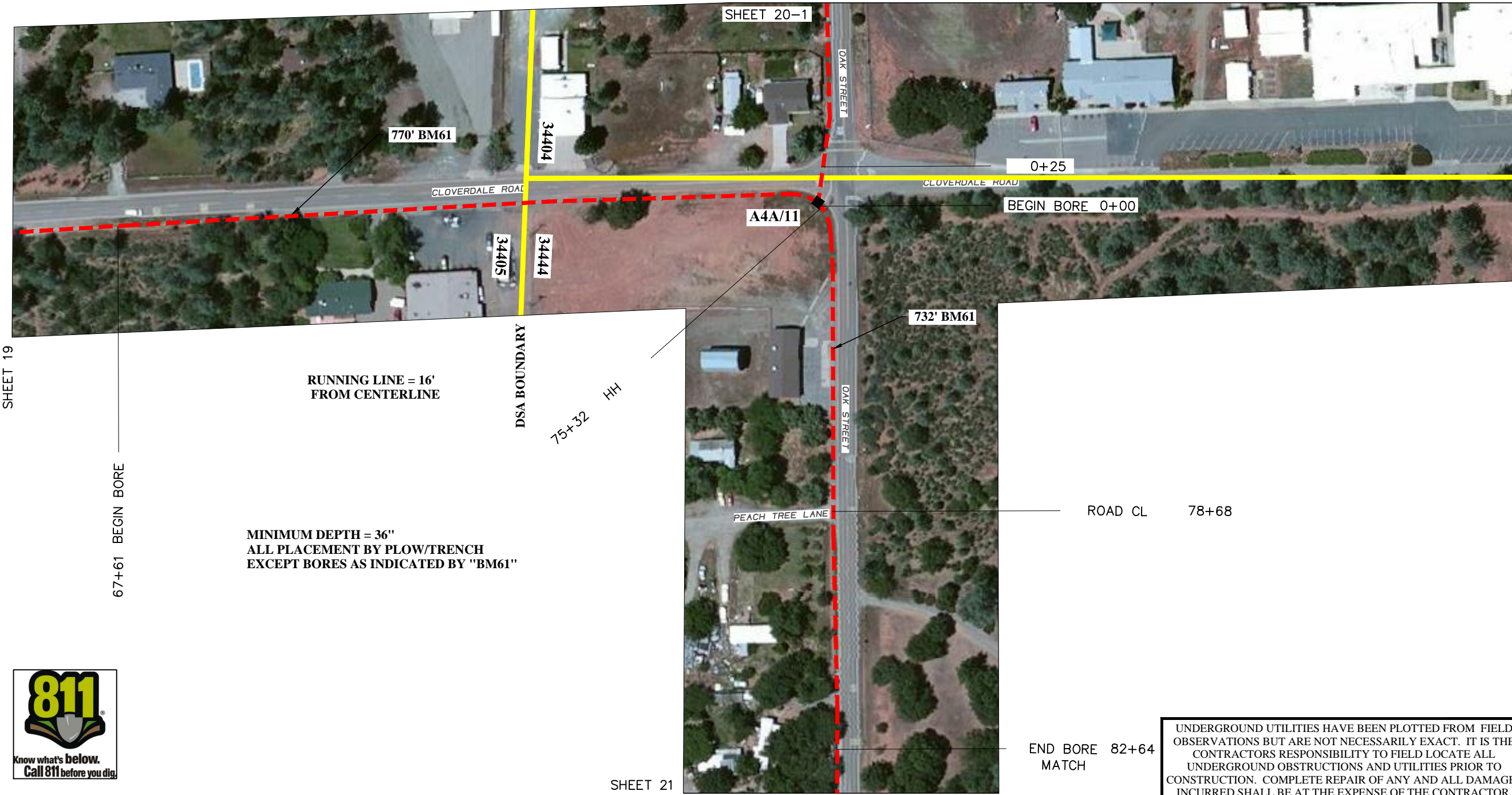


NOT TO SCALE

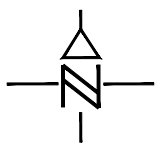
UNDERGROUND UTILITIES HAVE BEEN PLOTTED FROM FIELD OBSERVATIONS BUT ARE NOT NECESSARILY EXACT. IT IS THE CONTRACTORS RESPONSIBILITY TO FIELD LOCATE ALL UNDERGROUND OBSTRUCTIONS AND UTILITIES PRIOR TO CONSTRUCTION. COMPLETE REPAIR OF ANY AND ALL DAMAGES INCURRED SHALL BE AT THE EXPENSE OF THE CONTRACTOR.



POLES / PEDS				CABLE								POLE LINE & PED HARDWARE										OTHER			
TEL CO.	FOR CO.	BD / HA	BG / PG	LEAD ANGLE	POLE LENGTH CLASS	YEAR		JOINT		BFO (96)	BFOI (96)	BFOV (1)(1.25)	BFOV (2)(2)	BM2 (5/8)(8)	BM 20	BM 53	BM 61	BM71					HBFO (96)	HO 1	WBH
						SET	REM	%	W/																
192+32	SHT 12																								
196+11	CULVERT																50								
197+13	DRIVE																50								
202+14	DRIVE																305								
207+40	MATCH																3	70							
TOTAL																	3	475							



SHEET 20 OF 45
EX. ROUTE EA / AK
MAP REF. 344014
COUNTY: SHASTA
TOWNSHIP:
TAX DISTRICT: 344500
MUNICIPALITY: CLOVERDALE
TWN/RGE 30N / 5W
SEC. 5 / 8
STAKED BY FARR
DATE 10/14
DRAFTED BY FARR
DATE 10/14
W.O. TC-CA344ENG-001
REV
REV
REV
FILE:



NOT TO SCALE



UNDERGROUND UTILITIES HAVE BEEN PLOTTED FROM FIELD OBSERVATIONS BUT ARE NOT NECESSARILY EXACT. IT IS THE CONTRACTORS RESPONSIBILITY TO FIELD LOCATE ALL UNDERGROUND OBSTRUCTIONS AND UTILITIES PRIOR TO CONSTRUCTION. COMPLETE REPAIR OF ANY AND ALL DAMAGES INCURRED SHALL BE AT THE EXPENSE OF THE CONTRACTOR.

SHEET 19



SHEET 21

POLE / PEDS		CABLE										POLE LINE & PED HARDWARE										
TEL CO.	FOR CO.	BD / HA	BG / PG	LEAD ANGLE	POLE LENGTH CLASS	YEAR		JOINT		BFO (96)	BFOI (96)	BFOV (1)(1.25)	BFOV (2)(2)	BM2 (5/8)(8)	BM 20	BM 53	BM 61	BM71	HBFO (96)	HO 1	WBH	
						SET	REM	%	W/													
65+77	SHT 19																					
75+32	A4A/11	BH4 / BD3								100	1004	1004				1	770			1	8	1
82+64	MATCH										774	774				1	732					
TOTAL		1 / 1								100	1778	1778			2	1502			1	8	1	

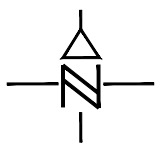
SHEET 20

UNDERGROUND UTILITIES HAVE BEEN PLOTTED FROM FIELD OBSERVATIONS BUT ARE NOT NECESSARILY EXACT. IT IS THE CONTRACTOR'S RESPONSIBILITY TO FIELD LOCATE ALL UNDERGROUND OBSTRUCTIONS AND UTILITIES PRIOR TO CONSTRUCTION. COMPLETE REPAIR OF ANY AND ALL DAMAGES INCURRED SHALL BE AT THE EXPENSE OF THE CONTRACTOR.

MINIMUM DEPTH = 36"
ALL PLACEMENT BY PLOW/TRENCH
EXCEPT BORES AS INDICATED BY "BM61"



SHEET 21 OF 45
EX. ROUTE EA / AA
MAP REF. 344014
COUNTY: SHASTA
TOWNSHIP:
TAX DISTRICT: 344500
MUNICIPALITY: CLOVERDALE
TWN/RGE 30N / 5W
SEC. 8
STAKED BY FARR
DATE 10/14
DRAFTED BY FARR
DATE 10/14
W.O. TC-CA344ENG-001
REV
REV
REV
FILE:



NOT TO SCALE



POLES / PEDS				CABLE					POLE LINE & PED HARDWARE													
TEL CO.	FOR CO.	BD / HA	BG / PG	LEAD ANGLE	POLE LENGTH CLASS	YEAR			BFO (96)	BFOI (96)	BFOV (1)(1.25)	BFOV (2)(1.25)	BFOV (1)(1.25)P	BM2 (5/8)(8)	BM 20	BM 53	BM 61	BM71	HBFO (96)	HO 1	WBH	
						SET	REM	% W/														
82+64	SHT 20																					
86+43	HH6	BH4 / BD3						100 / 50	390	390				1		2				1	4	
1+00	X							104 / 104		104							60					
11+50	P								1082	1082							40					
14+96									356				356									
TOTAL		1 / 1						150	2036	1472	104	356	1	2	100							



RUNNING LINE = 10'
W OF EDGE PVMT

SHEET 21-4

60' BM61

55' BM61

87+33
CULVERT

34442

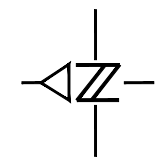
SERENDIPITY LANE

TREAT AVENUE

ROBIN LINDA LANE

END BORE	A2B2	PP	DSA
85+70	86+68	88+10	88+26

MINIMUM DEPTH = 36"
ALL PLACEMENT BY PLOW/TRENCH
EXCEPT BORES AS INDICATED BY "BM61"



NOT TO SCALE



UNDERGROUND UTILITIES HAVE BEEN PLOTTED FROM FIELD OBSERVATIONS BUT ARE NOT NECESSARILY EXACT. IT IS THE CONTRACTORS RESPONSIBILITY TO FIELD LOCATE ALL UNDERGROUND OBSTRUCTIONS AND UTILITIES PRIOR TO CONSTRUCTION. COMPLETE REPAIR OF ANY AND ALL DAMAGES INCURRED SHALL BE AT THE EXPENSE OF THE CONTRACTOR.



POLES / PEDS				CABLE										POLE LINE & PED HARDWARE															
POLE/ PED NO.		BD / HA	BG / PG	LEAD ANGLE	POLE LENGTH CLASS	YEAR				JOINT				BFO (96)	BFOI (96)	BFOV (1)(1.25)	BFOV (2)(2)	BM2 (5/8)(8)	BM 20	BM 53	BM 61	BM71					HBFO (96)	HO 1	WBH
TEL CO.	FOR CO.					SET	REM	%	W/																				
85+15	SHT 21-4																												
88+26	DSA	BH4 / BD3										50	340	340		1			55	60							1	8	
TOTAL		1 / 1										50	340	340		1			115							1	8		

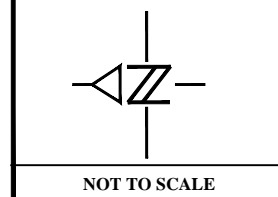


REDUCED CORRIDOR

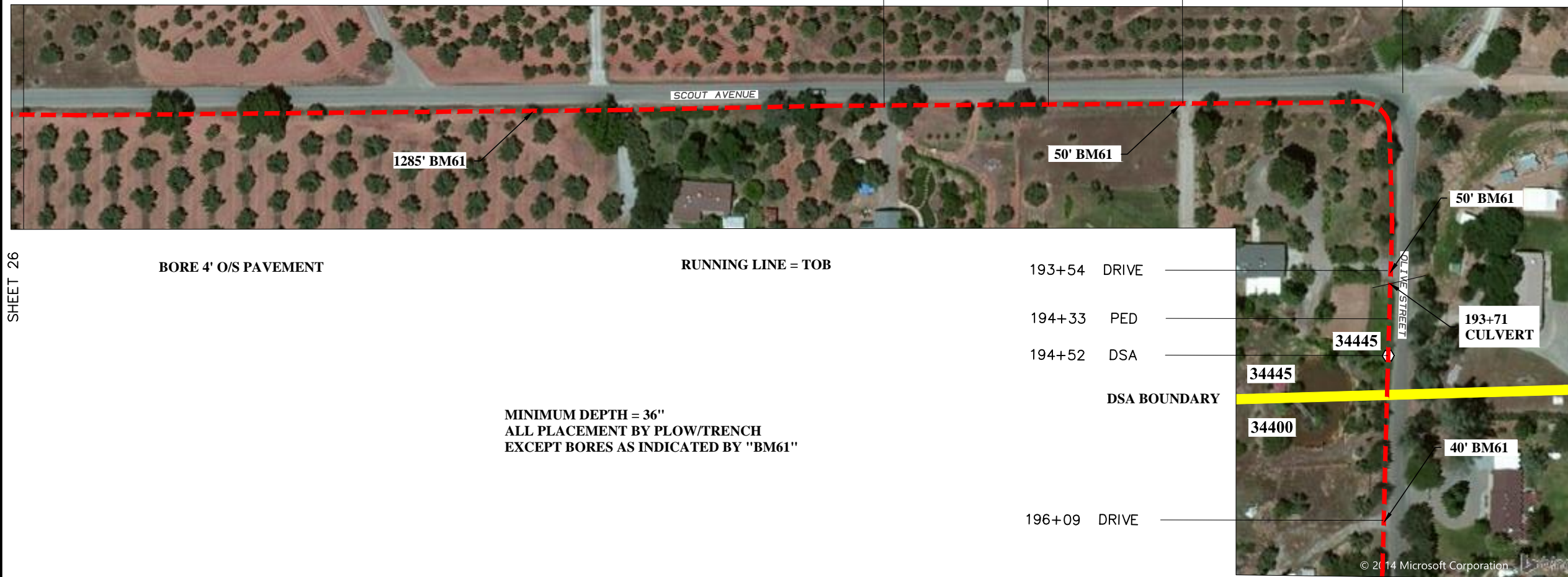
MINIMUM DEPTH = 36"
 ALL PLACEMENT BY PLOW/TRENCH
 EXCEPT BORES AS INDICATED BY "BM61"



UNDERGROUND UTILITIES HAVE BEEN PLOTTED FROM FIELD OBSERVATIONS BUT ARE NOT NECESSARILY EXACT. IT IS THE CONTRACTORS RESPONSIBILITY TO FIELD LOCATE ALL UNDERGROUND OBSTRUCTIONS AND UTILITIES PRIOR TO CONSTRUCTION. COMPLETE REPAIR OF ANY AND ALL DAMAGES INCURRED SHALL BE AT THE EXPENSE OF THE CONTRACTOR.



POLES / PEDS				CABLE										POLE LINE & PED HARDWARE														
POLE / PED NO.		BD / HA	BG / PG	LEAD ANGLE	POLE LENGTH CLASS	YEAR				JOINT		BFO (96)	BFOI (96)	BFOV (1)(1.25)	BFOV (2)(2)	BM2 (5/8)(8)	BM 20	BM 53	BM 61	BM71						HBFO (96)	HO 1	WBH
TEL CO.	FOR CO.					SET	REM	%	W/																			
121+54	SHT 23																											
																	1											
																		60										
																		45										
																		50										
140+40	DSA	BH4 / BD3									50 / 50	2036	2036		1		1	50							1	16		
143+41	CULVERT											330	330															
TOTAL											100	2366	2366		1		3	205						1	16			



SHEET 26

BORE 4' O/S PAVEMENT

RUNNING LINE = TOB

193+54 DRIVE

194+33 PED

194+52 DSA

DSA BOUNDARY

196+09 DRIVE

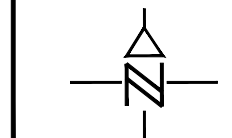
MINIMUM DEPTH = 36"
ALL PLACEMENT BY PLOW/TRENCH
EXCEPT BORES AS INDICATED BY "BM61"

SHEET 28

RUNNING LINE = 27'
O/S CENTERLINE



UNDERGROUND UTILITIES HAVE BEEN PLOTTED FROM FIELD OBSERVATIONS BUT ARE NOT NECESSARILY EXACT. IT IS THE CONTRACTOR'S RESPONSIBILITY TO FIELD LOCATE ALL UNDERGROUND OBSTRUCTIONS AND UTILITIES PRIOR TO CONSTRUCTION. COMPLETE REPAIR OF ANY AND ALL DAMAGES INCURRED SHALL BE AT THE EXPENSE OF THE CONTRACTOR.



NOT TO SCALE



POLES / PEDS				CABLE										POLE LINE & PED HARDWARE															
POLE/ PED NO.		BD / HA	BG / PG	LEAD ANGLE	POLE LENGTH CLASS	YEAR				JOINT		BFO (96)	BFOI (96)	BFOV (1)(1.25)	BFOV (2)(2)	BM2 (5/8)(8)	BM 20	BM 53	BM 61	BM71							HBFO (96)	HO 1	WBH
TEL CO.	FOR CO.					SET	REM	%	W/																				
175+21	SHT 26																												
																		1285											
																		50											
																		50											
194+52	DSA	BH4 / BD3									50 / 50	2010	2010		1	2									1	16			
196+09	DRIVE											182	182				40												
TOTAL		1 / 1									100	2192	2192		1	2	1425								1	16			

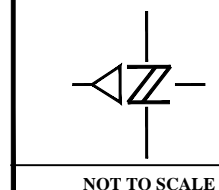


RUNNING LINE= 17' O/S CL

MINIMUM DEPTH = 36"
ALL PLACEMENT BY PLOW/TRENCH
EXCEPT BORES AS INDICATED BY "BM61"



UNDERGROUND UTILITIES HAVE BEEN PLOTTED FROM FIELD OBSERVATIONS BUT ARE NOT NECESSARILY EXACT. IT IS THE CONTRACTORS RESPONSIBILITY TO FIELD LOCATE ALL UNDERGROUND OBSTRUCTIONS AND UTILITIES PRIOR TO CONSTRUCTION. COMPLETE REPAIR OF ANY AND ALL DAMAGES INCURRED SHALL BE AT THE EXPENSE OF THE CONTRACTOR.



NOT TO SCALE



POLES / PEDS				CABLE				POLE LINE & PED HARDWARE										OTHER				
POLE/ PED NO.		BD / HA	BG / PG	LEAD ANGLE	POLE LENGTH CLASS	YEAR		JOINT		BFO (96)	BFOI (96)	BFOV (1)(1.25)	BFOV (2)(2)	BM2 (5/8)(8)	BM 20	BM 53	BM 61	BM71	HBFO (96)	HO 1	WBH	
TEL CO.	FOR CO.					SET	REM	%	W/													
213+52	SHT 28																					
																	224					
																	370					
																1	125					
																	55					
																	60					
																	50					
																	125					
																1	150					
234+58	ROAD CL	MATCH								2216	2216					1	400					
TOTAL										2216	2216				3	1559						

8+46 DRIVE
6+87 DRIVE
2+61 TREE
1+70 ROAD XING

MINIMUM DEPTH = 36"
ALL PLACEMENT BY PLOW/TRENCH
EXCEPT BORES AS INDICATED BY "BM61"



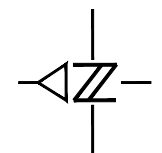
RUNNING LINE=
18' O/S CL

Existing Handhole

Existing Handhole

Existing 32 Fiber

Existing 40 Fiber



NOT TO SCALE



UNDERGROUND UTILITIES HAVE BEEN PLOTTED FROM FIELD OBSERVATIONS BUT ARE NOT NECESSARILY EXACT. IT IS THE CONTRACTORS RESPONSIBILITY TO FIELD LOCATE ALL UNDERGROUND OBSTRUCTIONS AND UTILITIES PRIOR TO CONSTRUCTION. COMPLETE REPAIR OF ANY AND ALL DAMAGES INCURRED SHALL BE AT THE EXPENSE OF THE CONTRACTOR.



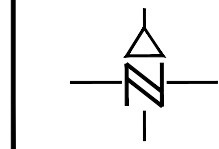
POLES / PEDS				CABLE										POLE LINE & PED HARDWARE									
POLE/ PED NO.	BD / HA	BG / PG	LEAD ANGLE	POLE LENGTH CLASS	YEAR		JOINT		BFO (96)	BFOI (96)	BFOV (1)(1.25)	BFOV (2)(2)	BM2 (5/8)(8)	BM 20	BM 53	BM 61	BM71	HO-1	WBH	WHBFO (3M-2178)	WHBFO (96)	HO 1	WBH
					SET	REM	%	W/															
0+00	Exist HH								50												1	8	1
																170							
																90							
														1	50								
8+46	DRIVE	MATCH							872	872													
TOTAL									50	872	872			1	310						1	8	1



MINIMUM DEPTH = 36"
ALL PLACEMENT BY PLOW/TRENCH
EXCEPT BORES AS INDICATED BY "BM61"



UNDERGROUND UTILITIES HAVE BEEN PLOTTED FROM FIELD OBSERVATIONS BUT ARE NOT NECESSARILY EXACT. IT IS THE CONTRACTORS RESPONSIBILITY TO FIELD LOCATE ALL UNDERGROUND OBSTRUCTIONS AND UTILITIES PRIOR TO CONSTRUCTION. COMPLETE REPAIR OF ANY AND ALL DAMAGES INCURRED SHALL BE AT THE EXPENSE OF THE CONTRACTOR.



NOT TO SCALE



POLES / PEDS				CABLE										POLE LINE & PED HARDWARE										OTHER			
POLE / PED NO.		BD / HA	BG / PG	LEAD ANGLE	POLE LENGTH CLASS	YEAR				JOINT		BFO (96)	BFOI (96)	BFOV (1)(1.25)	BFOV (2)(1.25)	BM2 (5/8)(8)	BM 20	BM 53	BM 61	BM71					HBFO (96)	HO 1	WBH
TEL CO.	FOR CO.					SET	REM	%	W/																		
8+46	SHT 34																										
																			100								
																			300								
28+17	DSA	BH4 / BD3								50 / 50	2050	2050		1			1412						1	16			
0+00											258	258					80										
6+30	DRIVE	MATCH									392	392					35										
TOTAL		1 / 1									100	2700	2700		1	2	1527	400									



ROAD CL 62+42

ALL BORE

RUNNING LINE=
15' O/S CL

MINIMUM DEPTH = 36"
ALL PLACEMENT BY PLOW/TRENCH
EXCEPT BORES AS INDICATED BY "BM61"

59+54 DRIVE

58+82 ROAD CL

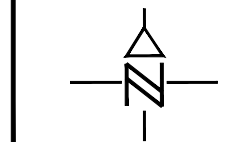
57+71 ROAD CL

72+40
DSA



SHEET 34-4

UNDERGROUND UTILITIES HAVE BEEN PLOTTED FROM FIELD OBSERVATIONS BUT ARE NOT NECESSARILY EXACT. IT IS THE CONTRACTORS RESPONSIBILITY TO FIELD LOCATE ALL UNDERGROUND OBSTRUCTIONS AND UTILITIES PRIOR TO CONSTRUCTION. COMPLETE REPAIR OF ANY AND ALL DAMAGES INCURRED SHALL BE AT THE EXPENSE OF THE CONTRACTOR.



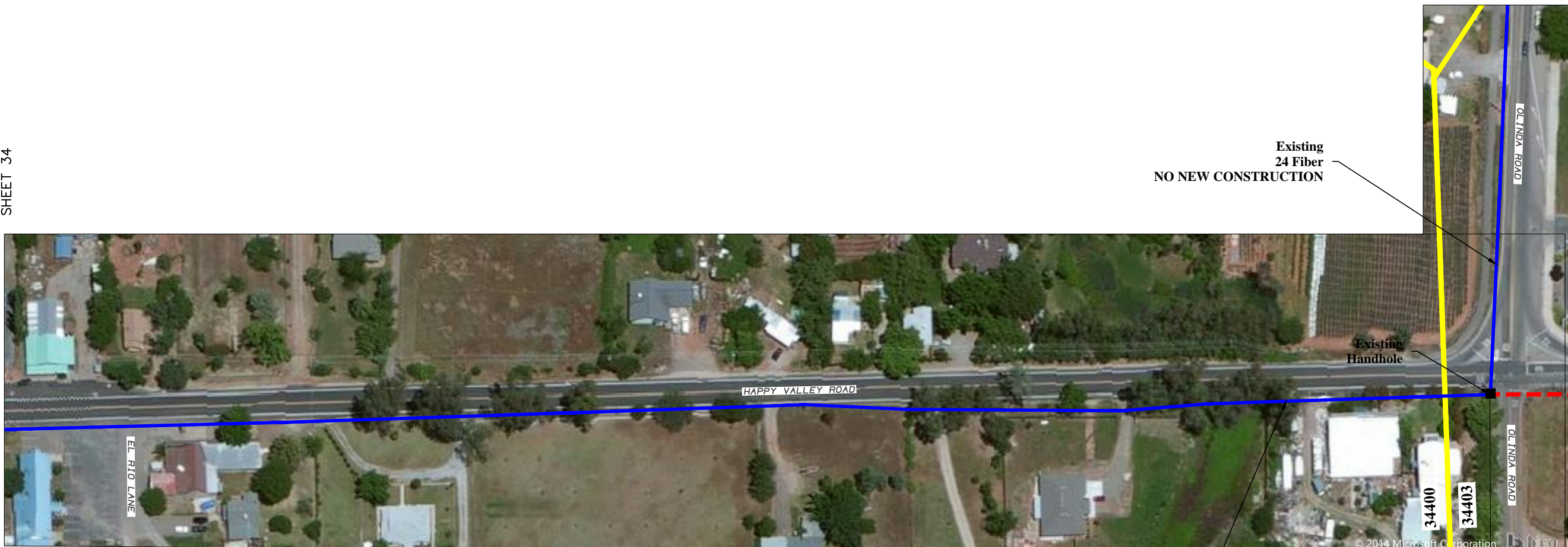
NOT TO SCALE



POLES / PEDS				CABLE										POLE LINE & PED HARDWARE														
POLE/ PED NO.		BD / HA	BG / PG	LEAD ANGLE	POLE LENGTH CLASS	YEAR				BFO (96)	BFOI (96)	BFOV (1)(1.25)	BFOV (2)(2)	BM2 (5/8)(8)	BM 20	BM 53	BM 61	BM71							HBFO (96)	HO 1	WBH	
TEL CO.	FOR CO.					SET	REM	%	W/																			
54+25	C.O.																											
72+40	DSA	BH4 / BD3							50	1888	1888			1	2	1868									1	8	1	
TOTAL		1 / 1							50	1888	1888			1	2	1868									1	8	1	

SHEET 34

SHEET 36



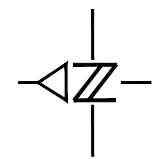
Existing 32 Fiber
NO NEW CONSTRUCTION

Existing 24 Fiber
NO NEW CONSTRUCTION

Existing Handhole

EXIST HH
0+00

SHEET 35-1



NOT TO SCALE



UNDERGROUND UTILITIES HAVE BEEN PLOTTED FROM FIELD OBSERVATIONS BUT ARE NOT NECESSARILY EXACT. IT IS THE CONTRACTORS RESPONSIBILITY TO FIELD LOCATE ALL UNDERGROUND OBSTRUCTIONS AND UTILITIES PRIOR TO CONSTRUCTION. COMPLETE REPAIR OF ANY AND ALL DAMAGES INCURRED SHALL BE AT THE EXPENSE OF THE CONTRACTOR.



POLES / PEDS				CABLE										POLE LINE & PED HARDWARE													
POLE/ PED NO.		BD / HA	BG / PG	LEAD ANGLE	POLE LENGTH CLASS	YEAR				JOINT		BFO (96)	BFOI (96)	BFOV (1)(1.25)	BFOV (2)(2)	BM2 (5/8)(8)	BM 20	BM 53	BM 61	BM71					HBFO (96)	HO 1	WBH
TEL CO.	FOR CO.					SET	REM	%	W/																		
0+00	EXIST HH										100													1	8	1	
TOTAL											100													1	8	1	

SHEET 35-3

ROAD CL 52+69
BEGIN BORE 52+71

END BORE 54+71

ROAD CL 56+26

BEGIN BORE 57+81

DRIVE 59+68
END BORE 59+93

BEGIN BORE 65+06

ROAD CL 65+30

END BORE 66+72
DSA 66+85

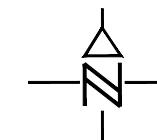


RUNNING LINE=
18' O/S C/L

MINIMUM DEPTH = 36"
ALL PLACEMENT BY PLOW/TRENCH
EXCEPT BORES AS INDICATED BY "BM61"



UNDERGROUND UTILITIES HAVE BEEN PLOTTED FROM FIELD OBSERVATIONS BUT ARE NOT NECESSARILY EXACT. IT IS THE CONTRACTORS RESPONSIBILITY TO FIELD LOCATE ALL UNDERGROUND OBSTRUCTIONS AND UTILITIES PRIOR TO CONSTRUCTION. COMPLETE REPAIR OF ANY AND ALL DAMAGES INCURRED SHALL BE AT THE EXPENSE OF THE CONTRACTOR.



NOT TO SCALE

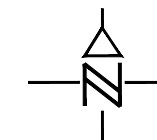


POLES / PEDS				CABLE										POLE LINE & PED HARDWARE													
POLE/ PED NO.		BD / HA	BG / PG	LEAD ANGLE	POLE LENGTH CLASS	YEAR				JOINT		BFO (96)	BFOI (96)	BFOV (1)(1.25)	BFOV (2)(2)	BM2 (5/8)(8)	BM 20	BM 53	BM 61	BM71					HBFO (96)	HO 1	WBH
TEL CO.	FOR CO.					SET	REM	%	W/																		
48+40	SHT 35-4																										
																		200									
																		90									
																		310									
66+85	DSA	BH4 / BD3									50	1920	1920			1	2	170						1	8	1	
TOTAL		1 / 1									50	1920	1920			1	2	770						1	8	1	



SHEET 39

SHEET 41



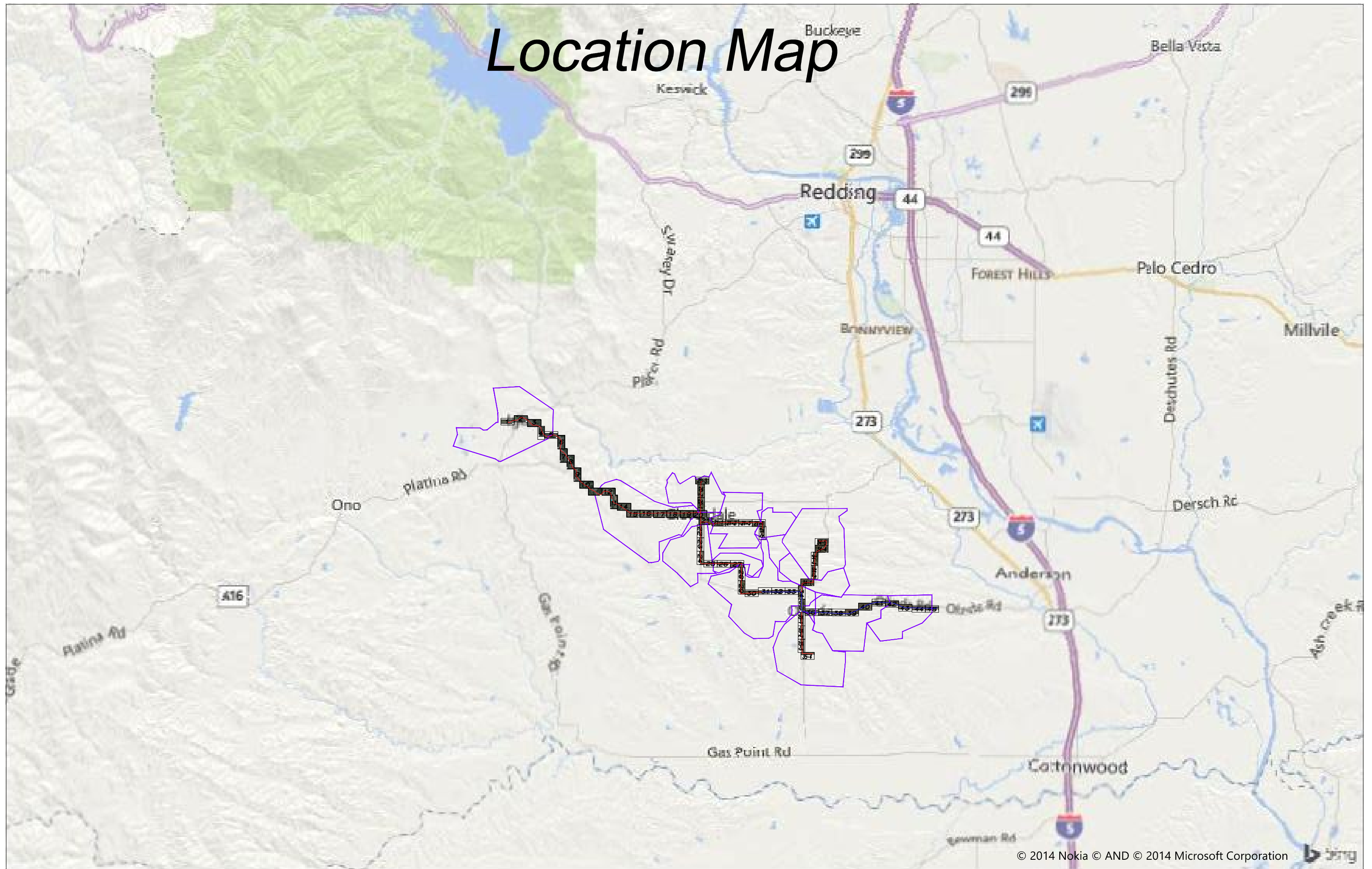
NOT TO SCALE

UNDERGROUND UTILITIES HAVE BEEN PLOTTED FROM FIELD OBSERVATIONS BUT ARE NOT NECESSARILY EXACT. IT IS THE CONTRACTORS RESPONSIBILITY TO FIELD LOCATE ALL UNDERGROUND OBSTRUCTIONS AND UTILITIES PRIOR TO CONSTRUCTION. COMPLETE REPAIR OF ANY AND ALL DAMAGES INCURRED SHALL BE AT THE EXPENSE OF THE CONTRACTOR.

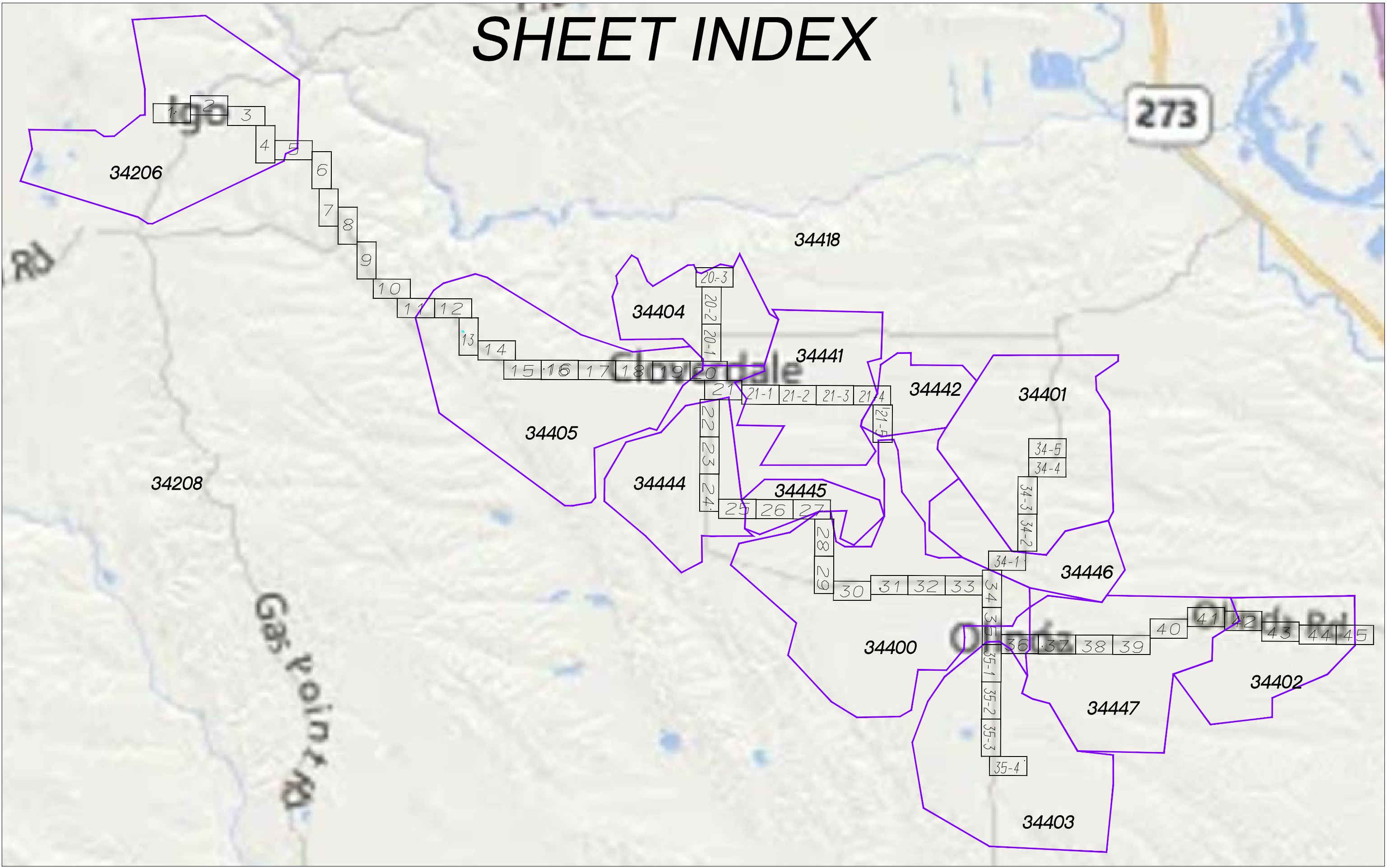


POLES / PEDS				CABLE										POLE LINE & PED HARDWARE															
POLE/ PED NO.		BD / HA	BG / PG	LEAD ANGLE	POLE LENGTH CLASS	YEAR		JOINT		BFO (96)	BFOI (96)	BFOV (1)(1.25)	BFOV (2)(2)	BM2 (5/8)(8)	BM 20	BM 53	BM 61	BM71							HBFO (96)	HO 1	WBH		
TEL CO.	FOR CO.					SET	REM	%	W/																				
					</																								

Location Map

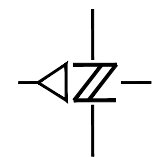


SHEET INDEX





© 2014 Microsoft Corporation



NOT TO SCALE

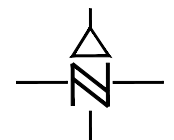
UNDERGROUND UTILITIES HAVE BEEN PLOTTED FROM FIELD OBSERVATIONS BUT ARE NOT NECESSARILY EXACT. IT IS THE CONTRACTORS RESPONSIBILITY TO FIELD LOCATE ALL UNDERGROUND OBSTRUCTIONS AND UTILITIES PRIOR TO CONSTRUCTION. COMPLETE REPAIR OF ANY AND ALL DAMAGES INCURRED SHALL BE AT THE EXPENSE OF THE CONTRACTOR.



POLES / PEDS				CABLE								POLE LINE & PED HARDWARE													
POLE/ PED NO.		BD / HA	BG / PG	LEAD ANGLE	POLE LENGTH CLASS	YEAR		JOINT																	
TEL CO.	FOR CO.					SET	REM	%	W/																
0+00																									



© 2014 Microsoft Corporation



NOT TO SCALE

UNDERGROUND UTILITIES HAVE BEEN PLOTTED FROM FIELD OBSERVATIONS BUT ARE NOT NECESSARILY EXACT. IT IS THE CONTRACTORS RESPONSIBILITY TO FIELD LOCATE ALL UNDERGROUND OBSTRUCTIONS AND UTILITIES PRIOR TO CONSTRUCTION. COMPLETE REPAIR OF ANY AND ALL DAMAGES INCURRED SHALL BE AT THE EXPENSE OF THE CONTRACTOR.



POLES / PEDS				CABLE				POLE LINE & PED HARDWARE																	
POLE/ PED NO.		BD / HA	BG / PG	LEAD ANGLE	POLE LENGTH CLASS	YEAR		JOINT																	
TEL CO.	FOR CO.					SET	REM	%	W/																
0+00																									

