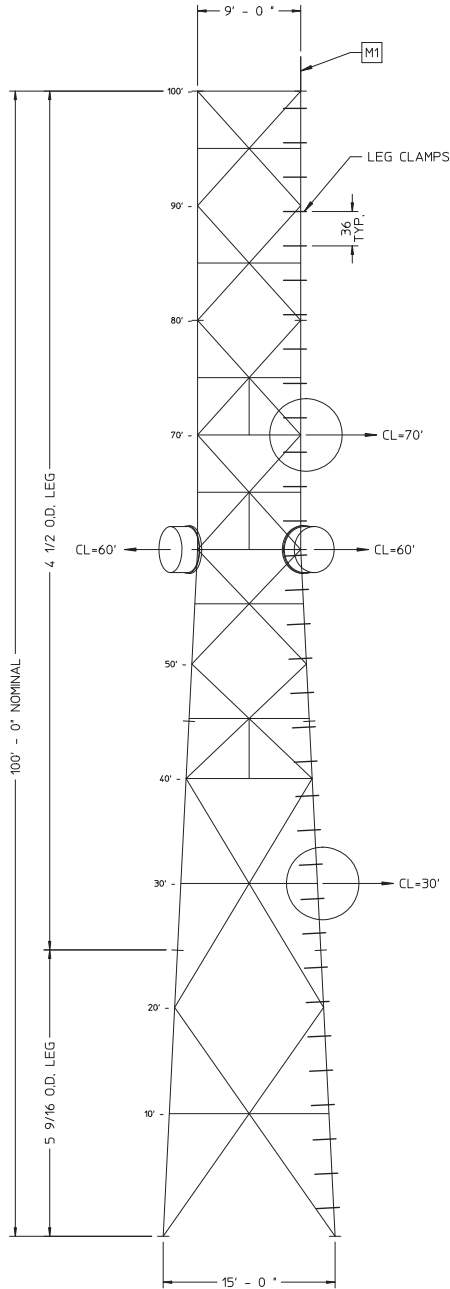


Attachment A

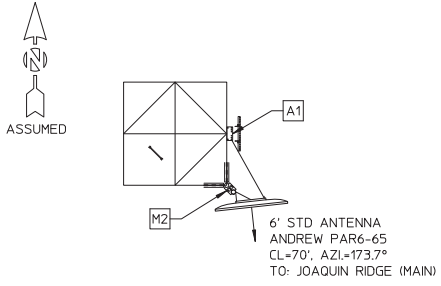
Response to #1

Revised Figure 2-4 & Typical Microwave Tower Schematic

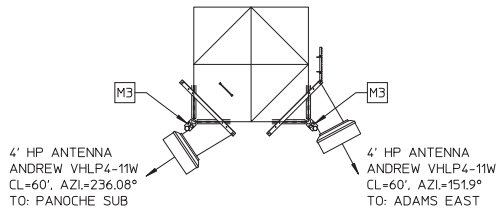
Mendota Substation Microwave Tower Schematic



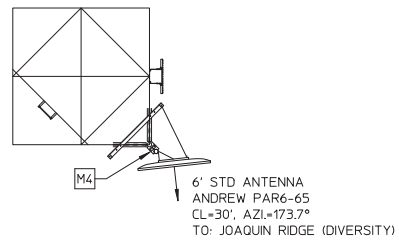
SOUTH ELEVATION
1/8"=1'-0"



PLAN AT 70' LEVEL
1/8"=1'-0"

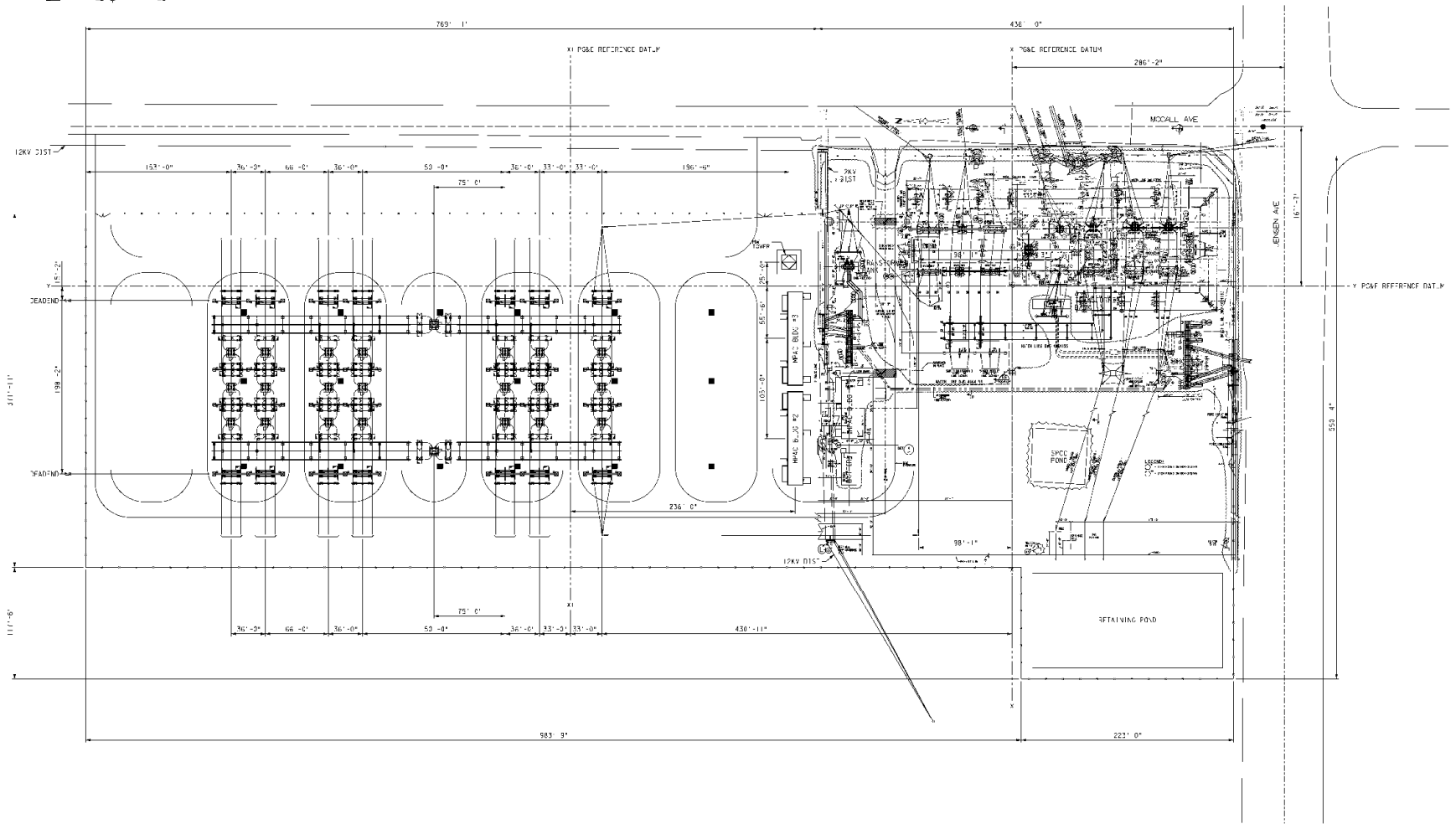
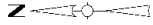


PLAN AT 60' LEVEL
1/8"=1'-0"



PLAN AT 30' LEVEL
1/8"=1'-0"

Disclaimer: This is an example of a typical microwave tower schematic and is provided for illustration purposes only.



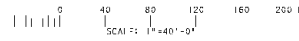
NOTES

1. X - X = 162' 11"
2. TRANSMISSION LINE TYP AND LOCATION OUTSIDE SUBS ATTENTION TO BE DETERMINED BY OTHERS.
3. THE MPC BUILDINGS HAVE BEEN RELOCATED TO THE SOUTH AS SHOWN PER P&G REQUESTS.
4. THE MPC BUILDING SERVING BUS SECTION D WILL HAVE INCREASE IN CONDUITS AND CABLES USE. P&G IS AWARE AS A RESULT OF THIS RELOCATION.

REFERENCES

- SINGLE LINE DIAGRAM - 115KV SYS BY _____ S-J
 ULTIMATE SINGLE LINE DIAGRAM - 15KV SYSTEM _____ U.TS.D
 SINGLE LINE DIAGRAM - 12KV SYSTEM _____ B22224

DWG NO.



Note: Preliminary and subject to change based on CPUC requirements, final engineering, and other factors



FIGURE 2-4
Existing and Expanded Substation
General Arrangements
 Sanger Substation Expansion Project

Date: 5/13/2016