

South Orange County Reliability Enhancement (SOCRE) Project CPUC CEQA Public Scoping Meeting



Please Sign In

- Pick up meeting materials
- Fill out a speaker card if you want to comment
- Pick up comment cards for written comments

Public Scoping Period Ends: February 8, 2013

South Orange County Reliability Enhancement (SOCRE) Project



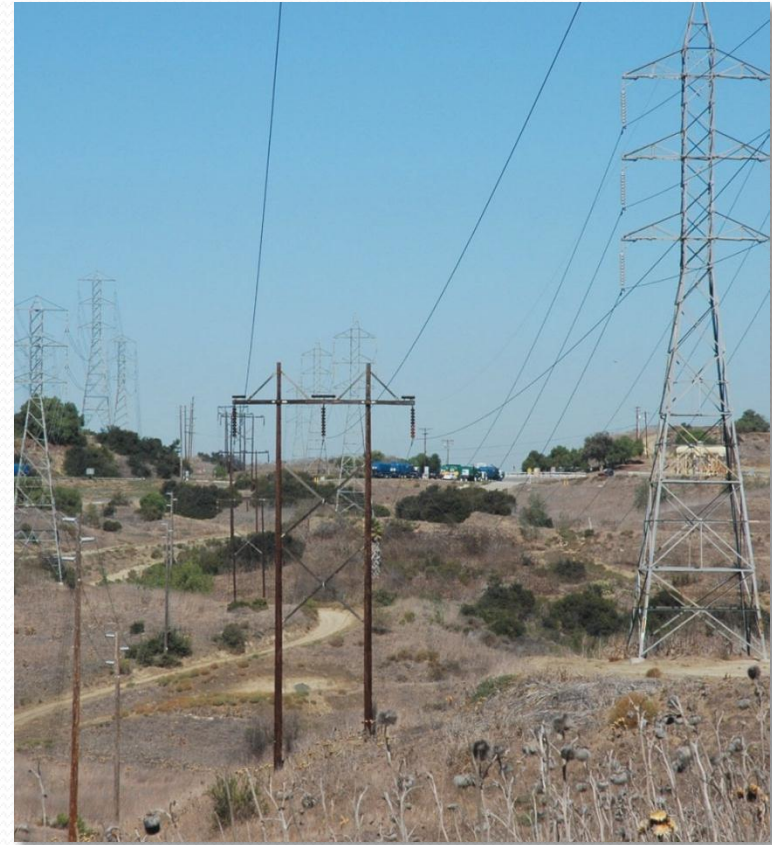
CEQA Public Scoping Meetings
January 23 and 24, 2013

Public Scoping Meeting Agenda

- **Introduction**
- **Purpose of the Meeting**
- **CPUC and Environmental Review Process**
- **Description of the Project**
- **CEQA**
- **How to Comment**

Purposes of the Public Meeting

1. **Share information about the SOCRE Project**
2. **Solicit input from the public and agencies on the scope of the Environmental Impact Report**





CPUC and the Environmental Review Process

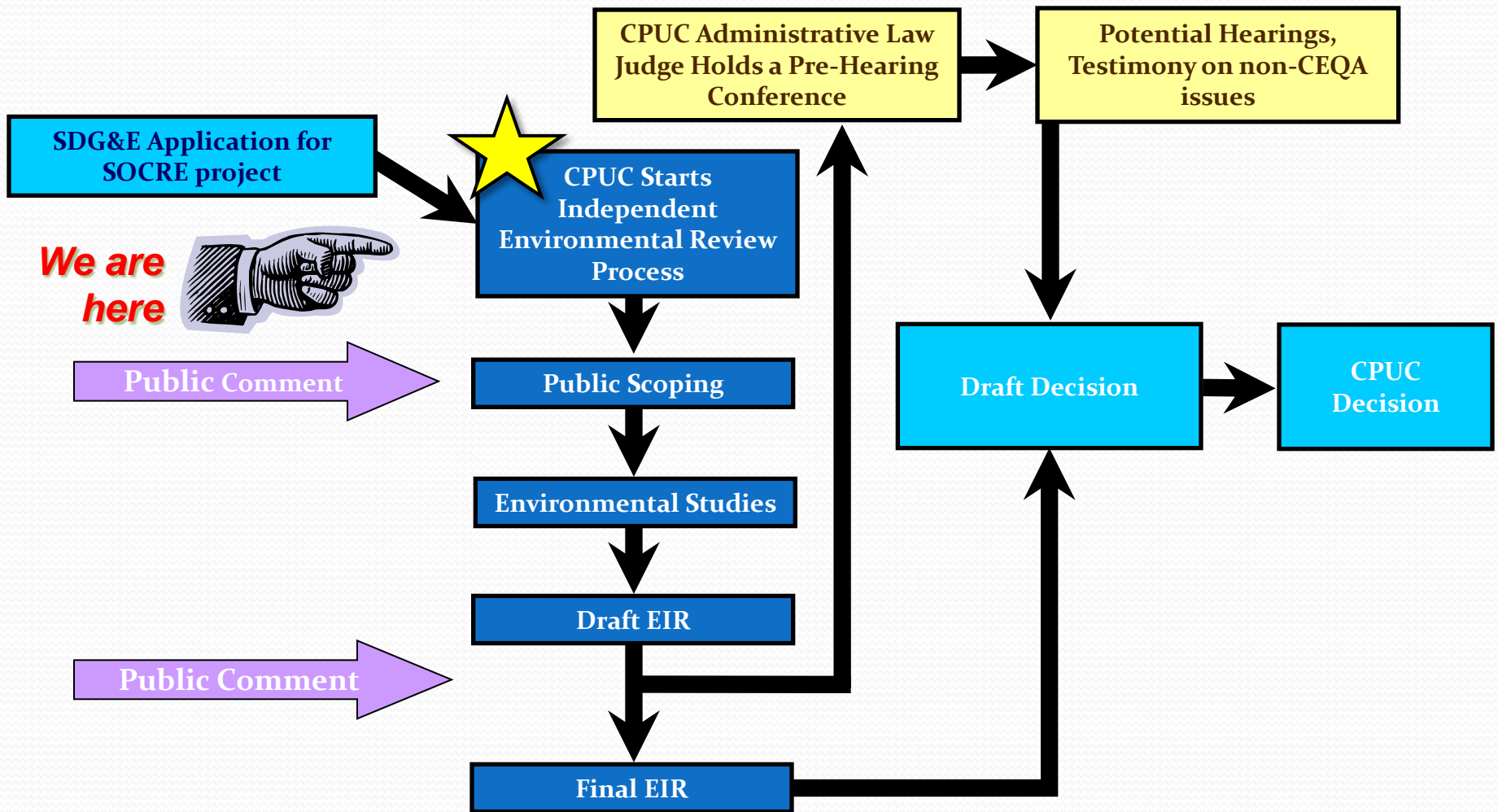
CPUC Process for Project Review

The CPUC process has two parts:

1. Ratemaking (need, cost, feasibility and rates)
2. Environmental review

Today's meeting is about Environmental Review:
Compliance with California Environmental
Quality Act (CEQA)

CPUC Process for Project Review





For Additional Information:
<http://www.cpuc.ca.gov>



South Orange County Reliability Enhancement Project and CEQA

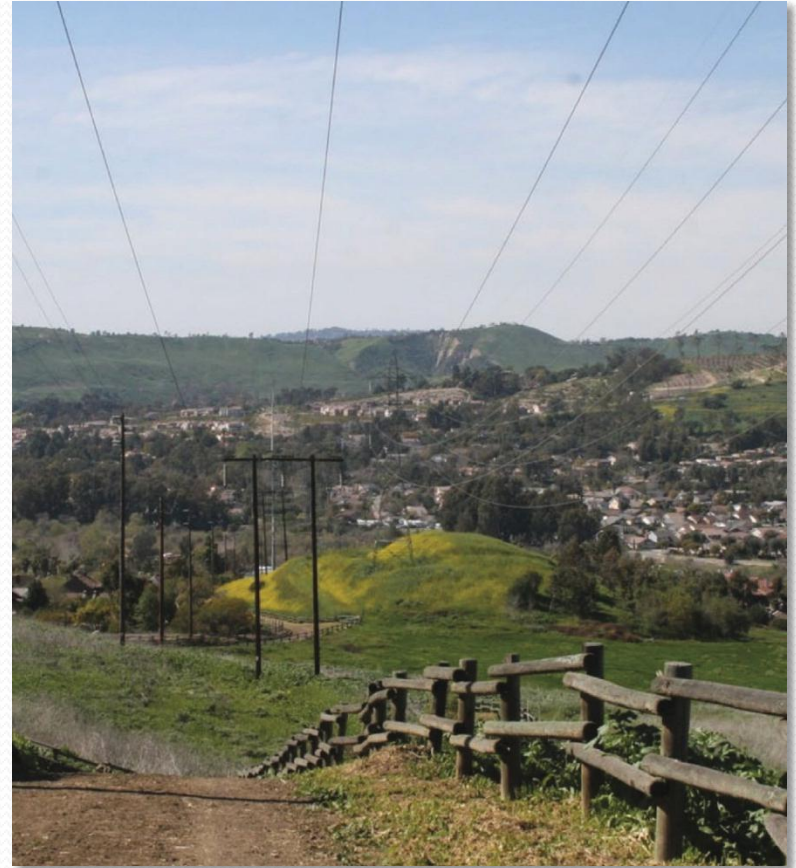
Key Players and Their Roles

California Public Utilities Commission (CPUC):

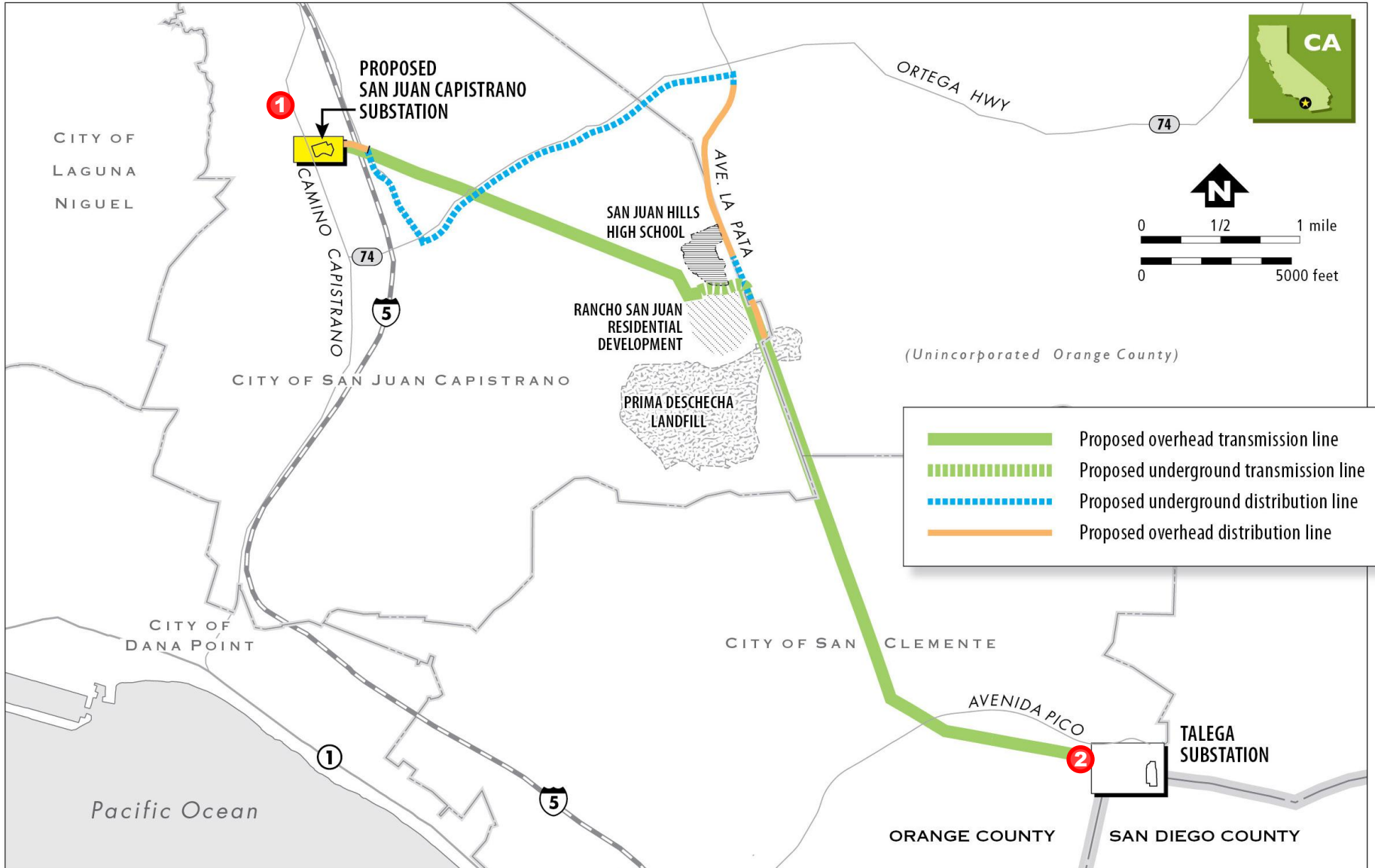
- Lead agency under CEQA
- E & E is CPUC's CEQA contractor

San Diego Gas & Electric (SDG&E):

Applicant and project developer



SOCRE Project



SOCRE Project

- Rebuild and upgrade *Capistrano Substation* as a larger substation called *San Juan Capistrano Substation*.
- Replace a single-circuit 138-kV transmission line between Talega and Capistrano substations with a new 230-kV double-circuit transmission line (7.5 miles).
 - Relocate several transmission line segments located near the two substations (additional 2 miles) .
- Relocate a 12-kV distribution line into new and existing underground conduit and overhead on new structures from the proposed San Juan Capistrano Substation to Prima Deschecha Landfill (6 miles).

SOCRE Project



SOCRE Project



SOCRE Project

2



SOCRE Project

- **Approximately 140 transmission and distribution line structures would be removed and 120 would be installed.**
- **New rights-of-way would be acquired by SDG&E for approximately 0.30 miles of the proposed transmission line routes.**
- **Construction would take approximately 4 years months including 4 months for restoration of the proposed substation site and transmission and distribution line corridors.**

CEQA: Approach

- **SDG&E has submitted an application to CPUC**
- **CPUC is CEQA lead agency – required to review environmental impacts of SDG&E’s proposal**
- **E & E (CPUC contractor) is conducting the environmental review under CEQA**

Environmental Impact Report (EIR)

What Will Be In the EIR

- **Description of the project**
- **Description of alternatives**
- **Analysis of environmental impacts**
- **Mitigation (for significant impacts)**
- **Comparison of alternatives**
- **“Other CEQA considerations,” including cumulative impacts and growth-inducing impacts**
- **Mitigation Monitoring Plan**

What Will Be In the EIR

Environmental Issue Areas	
Aesthetics	Hydrology, Water Quality
Agriculture and Forestry Resources	Land Use, Planning
Air Quality and Greenhouse Gases	Noise
Biological Resources	Population, Housing
Cultural Resources	Public Services, Utilities
Geology, Soils	Recreation
Hazards, Hazardous Materials	Transportation, Traffic

How to Make Comments

Written public scoping comments must be received or postmarked by **February 8, 2013**

Email: SOCRE.CEQA@ene.com

Mail: Attention: Andrew Barnsdale, CPUC

RE: SOCRE Project

505 Sansome Street, Suite #300

San Francisco, CA 94111

Web: www.cpuc.ca.gov/Environment/info/ene/socre/socre.html

Information Hotline: (855) 520-6799