



## South Orange County Reliability Enhancement Project

### Project Overview

San Diego Gas & Electric (SDG&E) is seeking to improve the reliability of the electrical system and accommodate anticipated growth in South Orange County. To meet these goals, SDG&E proposes to construct the South Orange County Reliability Enhancement (SOCRE) project. The SOCRE project would include:

- Replacing SDG&E's existing Capistrano electrical substation, located in San Juan Capistrano, with a new, gas-insulated substation to modernize aging equipment and increase capacity.
- Replacing a segment of SDG&E's 138-kV electrical transmission line that runs from the existing Capistrano substation to the Talega Substation with a double-circuit 230-kV transmission line, and relocating several distribution lines between the two substations. This would involve the removal of about 140 transmission and distribution line structures, installation of about 120 structures, and installation of new electric lines on both above-ground poles and underground conduits.
- Modification of infrastructure at the Talega Substation, on Marine Corps Base Camp Pendleton in northern San Diego County.

SDG&E has submitted an application for a project permit to the California Public Utilities Commission (CPUC). If the project is approved, construction could begin in November, 2013 and would take place over a four year period. Maps on the other side of this fact sheet show where the elements of the project would be constructed.

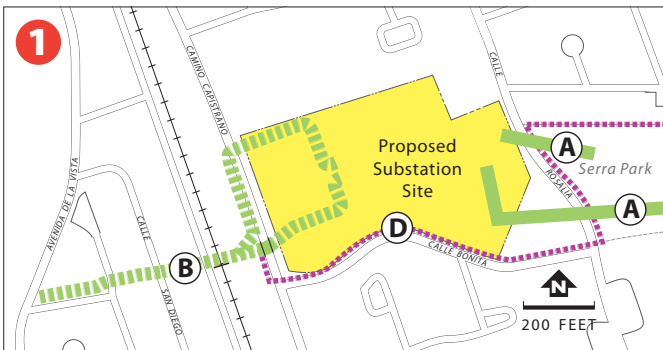
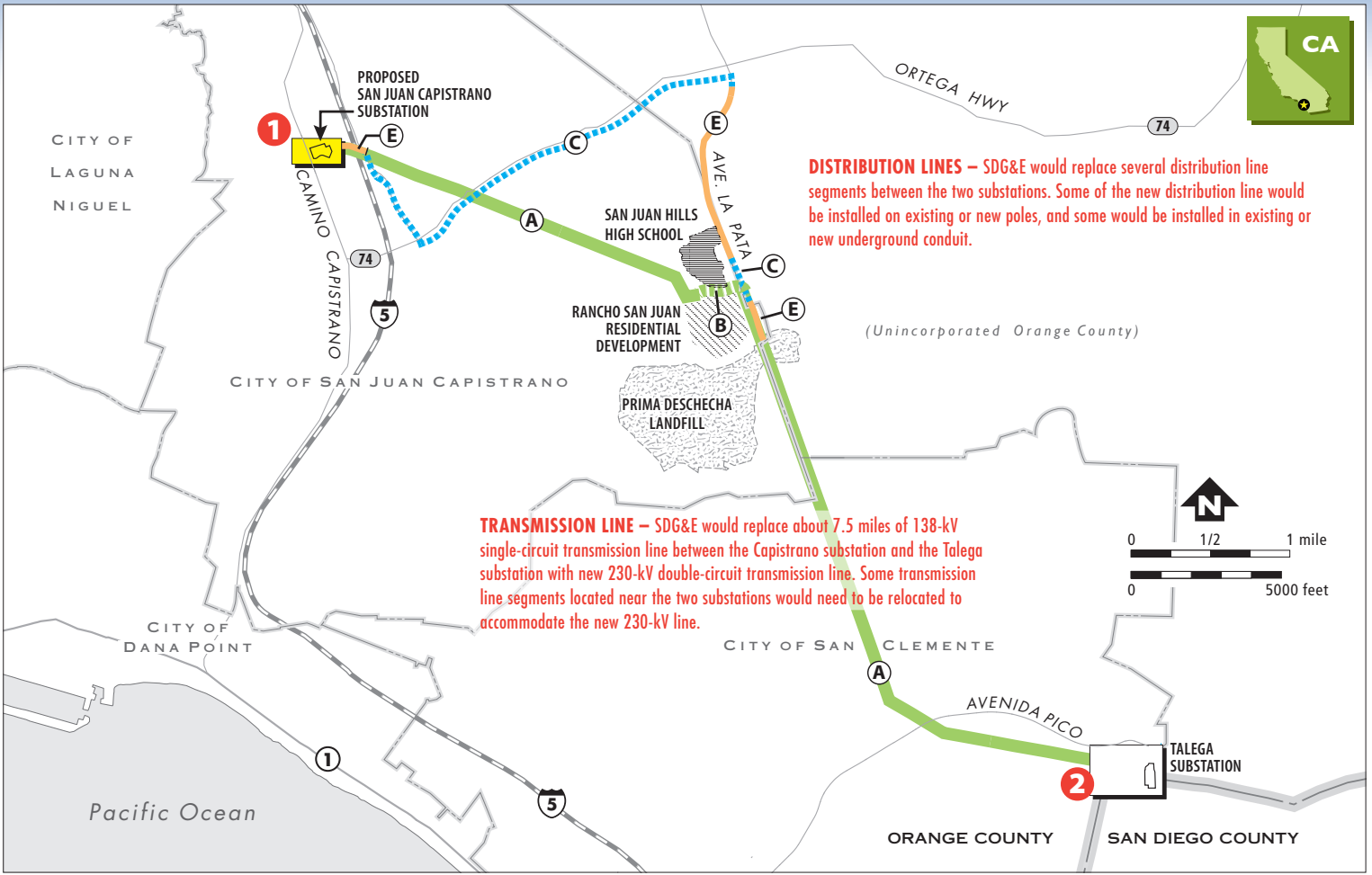
### Environmental Impact Assessment

The CPUC will review SDG&E's project application and consider whether the project is needed and is in the public interest. Under the California Environmental Quality Act (CEQA), the CPUC is also required to evaluate the SOCRE project's potential impacts to the environment. At the same time the CPUC is reviewing the project application, the CPUC will also prepare an Environmental Impact Report (EIR) for the project consistent with CEQA. The public will have opportunities throughout the EIR process to learn about and comment on the proposed project and its environmental impacts.

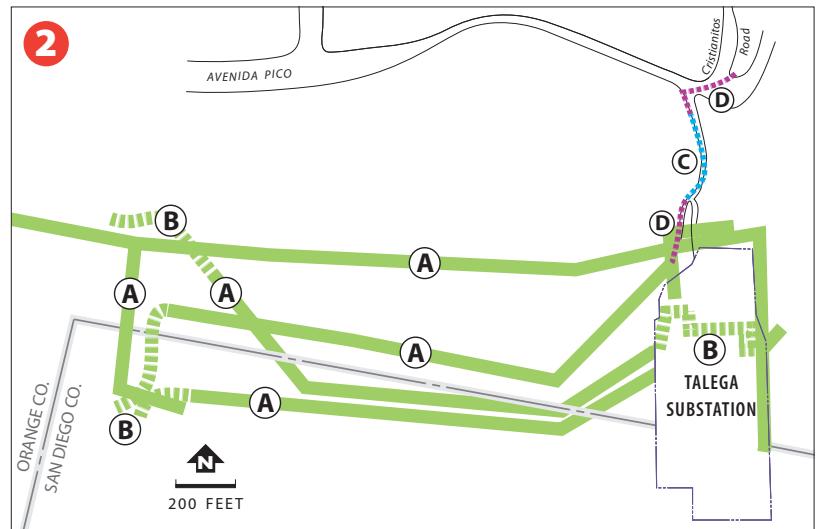
### Public Involvement

The CPUC would like to know your views on the project, and invites you to submit comments about what might need to be included in the environmental analysis. Comments may be mailed, emailed, or communicated verbally at one of two public meetings or on the CPUC's hotline for the project (information provided below). All comments must be postmarked by February 8, 2013. Once the public review period ends, the CPUC will review all comments received during the scoping process and prepare the Draft EIR, which will be circulated for review and further comment.





SDG&E would replace the existing, 2-acre air-insulated Capistrano Substation with a gas-insulated substation about 6.4 acres in size, which would be known as the **SAN JUAN CAPISTRANO SUBSTATION**. The existing, 138/12-kV substation, which was constructed in the 1960s, would be modernized and replaced with a 230/138/12-kV substation, to improve operational safety while also upgrading capacity.



SDG&E would upgrade portions of the **TALEGA SUBSTATION** and associated electrical infrastructure located within U.S. Marine Corps Base Camp Pendleton and San Diego County.

**For more information...**

**Email:** [SOCRE.CEQA@ene.com](mailto:SOCRE.CEQA@ene.com)  
**Mail:** Attn: Andrew Barnsdale  
 California Public Utilities Commission  
 Re: SOCRE Project, 505 Sansome Street #300  
 San Francisco, CA 94111  
**Fax:** (415) 398-5326  
**Hotline:** (855) 520-6799

<b>A</b>	Proposed transmission line (overhead on new structures)
<b>B</b>	Proposed underground transmission line (new conduit)*
<b>C</b>	Proposed underground distribution line (existing conduit)
<b>D</b>	Proposed underground distribution line (new conduit)
<b>E</b>	Proposed distribution line (overhead on new structures)

\* Conduit would include new underground distribution line in some areas, or new underground distribution line would be adjacent and cannot be shown at this scale.