

# Public Meeting on the Draft EIR for the San Diego Gas and Electric Company **South Orange County** **Reliability Enhancement Project**

Please:

- Sign in and pick up meeting materials
- Fill out a speaker card if you want to submit verbal comments during this meeting
- Fill out a comment card to submit written comments

**The presentation will start at 6:15 pm.**

Tenemos un traductor en español presente en la sala, por favor contáctenos si necesita asistencia.

**SOCRE DRAFT ENVIRONMENTAL IMPACT REPORT**



# South Orange County Reliability Enhancement Project



Public Meeting on the  
Draft Environmental Impact Report  
March 25, 2015

SOCRE DRAFT ENVIRONMENTAL IMPACT REPORT



# Housekeeping

- ¿Hay alguna persona en la sala que necesite asistencia en español, además de quienes ya nos han notificado?
- Please turn cell phones off or to a silent mode
- Emergency exit locations
- Restroom locations



# Agenda

- Presentation
  - Introductions
  - Purpose of this Meeting
  - How to Comment on the Draft EIR
  - CEQA and CPUC Review Processes
  - Description of the Proposed Project
  - Objectives of the Proposed Project
  - Environmental Impacts
  - Alternatives to the Proposed Project
  - More Information
- Verbal Comments

SOCRE DRAFT ENVIRONMENTAL IMPACT REPORT



# Introductions

- **California Public Utilities Commission (CPUC), Energy Division**
  - Andrew Barnsdale, Project Manager
  - Rob Peterson, CEQA Regulatory Analyst
- **Ecology and Environment, Inc.**
  - Bonny O'Connor, Project Manager
  - Silvia Yanez, Environmental Scientist, *habla español*
  - Erec DeVost, Environmental Scientist
  - Luke Shillington, Environmental Scientist
  - Jessica Midbust, Planner

SOCRE DRAFT ENVIRONMENTAL IMPACT REPORT



# Purpose of this Meeting

- San Diego Gas and Electric Company (SDG&E) has submitted an application to the CPUC for the South Orange County Reliability Enhancement Project (SOCRE)
- CPUC, as the CEQA Lead Agency, prepared and released (February 23, 2015) a Draft Environmental Impact Report (EIR) and is hosting this meeting to:
  - Share information about the SOCRE Draft EIR
  - Solicit input from the public to include in the Final EIR

SOCRE DRAFT ENVIRONMENTAL IMPACT REPORT



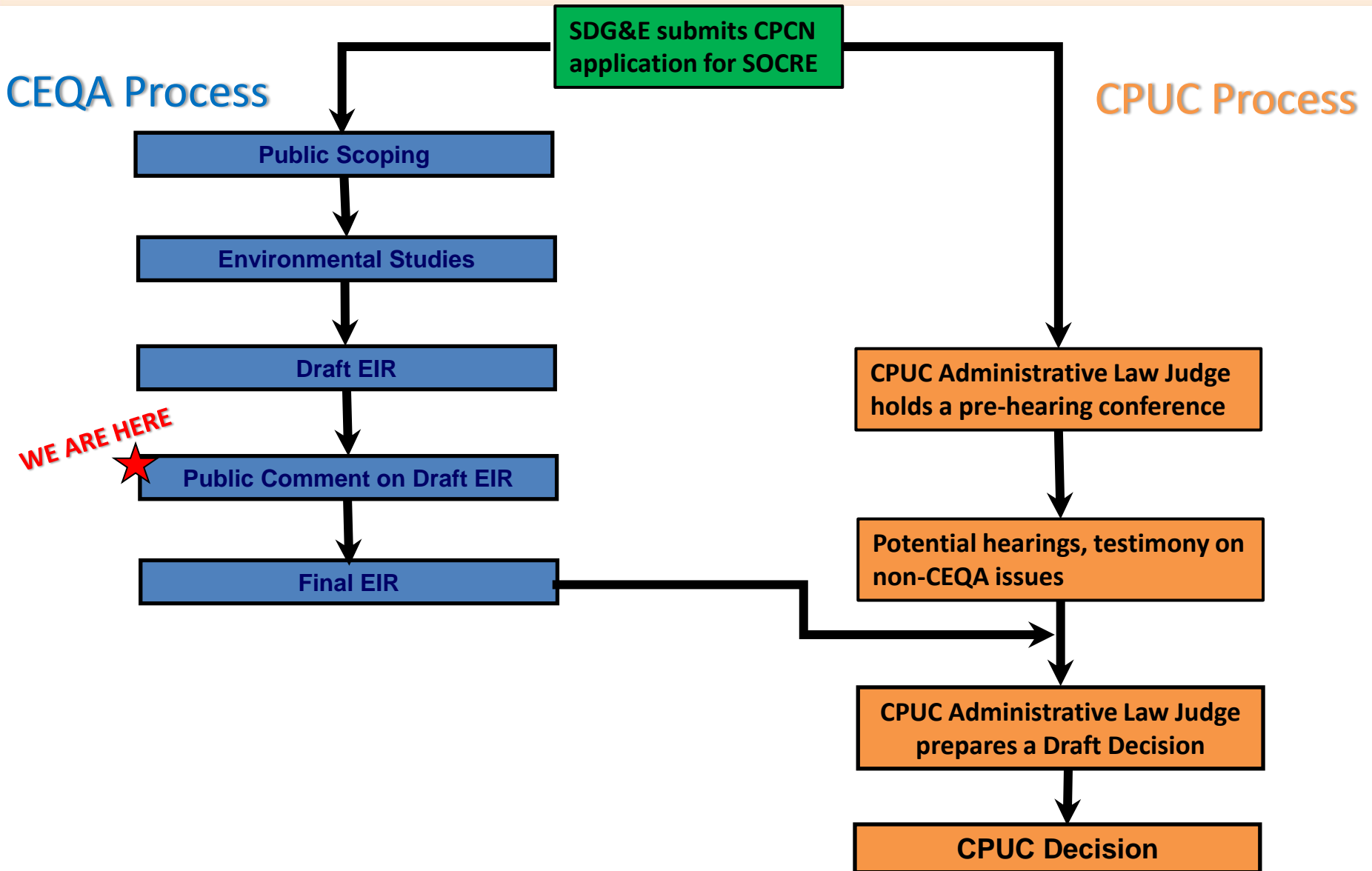
# How to Comment on the Draft EIR

- Verbal comments will be accepted during this meeting. Please fill out a speaker card.
- The public comment period for the Draft EIR ends on April 10, 2015.
  - Fill out and return a comment form available at this meeting.
  - Email comments to: [SOCRE.CEQA@ene.com](mailto:SOCRE.CEQA@ene.com)
  - Mail comments to:  
South Orange County Reliability Enhancement Project  
c/o Ecology and Environment, Inc.  
505 Sansome Street, Suite 300  
San Francisco, CA 94111
  - Fax comments to: 415-398-5326

SOCRE DRAFT ENVIRONMENTAL IMPACT REPORT



# CEQA and CPUC Review Processes





# CPUC Administrative Law Judge Proceeding Process

- On March 3-12-15 the ALJ issued a revised schedule:

<b>Adopted Schedule – A.12-05-020</b>	
SDG&E Serves Amended or Supplemental Opening Testimony	April 7, 2015
ORA and Intervenors serve Reply Testimony	May 26, 2015
Rebuttal Testimony	June 24, 2015
Hearings	July 15-17, 2015
Opening Brief	August 3, 2015
Reply Brief	August 17, 2015
Proposed Decision Issued	4 <sup>th</sup> Quarter 2015
First Commission Meeting to Consider Proposed Decision	4 <sup>th</sup> Quarter 2015

## SOCRE DRAFT ENVIRONMENTAL IMPACT REPORT



# CPUC Administrative Law Judge Proceeding Process

If you would be like to added to the mailing list for the proceeding to address issues not related to the CEQA process, go to:  
[http://www.cpuc.ca.gov/service\\_lists/](http://www.cpuc.ca.gov/service_lists/)

Fill out the Addition/Change to Service List Form (reference A. 1205020) and provide the completed form to the Commission's Process Office (505 Van Ness Ave., San Francisco, CA 94102), or e-mail the form to:  
[Process\\_Office@cpuc.ca.gov](mailto:Process_Office@cpuc.ca.gov)

## *CPUC's Public Advisor Website*

<http://www.cpuc.ca.gov/PUC/aboutus/Divisions/CSID/Public+Advisor/>

10

**SOCRE DRAFT ENVIRONMENTAL IMPACT REPORT**



# Description of the Proposed Project



# Description of Proposed Project

The primary components of the proposed project include:

- Rebuilding and upgrading the 138/12-kilovolt (kV) 60-megavolt ampere (MVA) air-insulated Capistrano Substation as a 230/138/12-kV 700-MVA gas-insulated (GIS) substation that would be named the San Juan Capistrano Substation;
- Replacing a single-circuit 138-kV transmission line between the Talega and Capistrano substations with a new double-circuit 230-kV transmission line;
- Relocating several transmission line segments adjacent to the Talega and Capistrano substations to accommodate the proposed Capistrano Substation expansion and new 230-kV line; and
- Relocating several 12-kV distribution line segments into underground conduit and overhead on existing and new structures located between the Capistrano Substation and Prima Deshecha Landfill.

12

SOCRE DRAFT ENVIRONMENTAL IMPACT REPORT



# Objectives of the Proposed Project

The basic objectives of the proposed project are to:

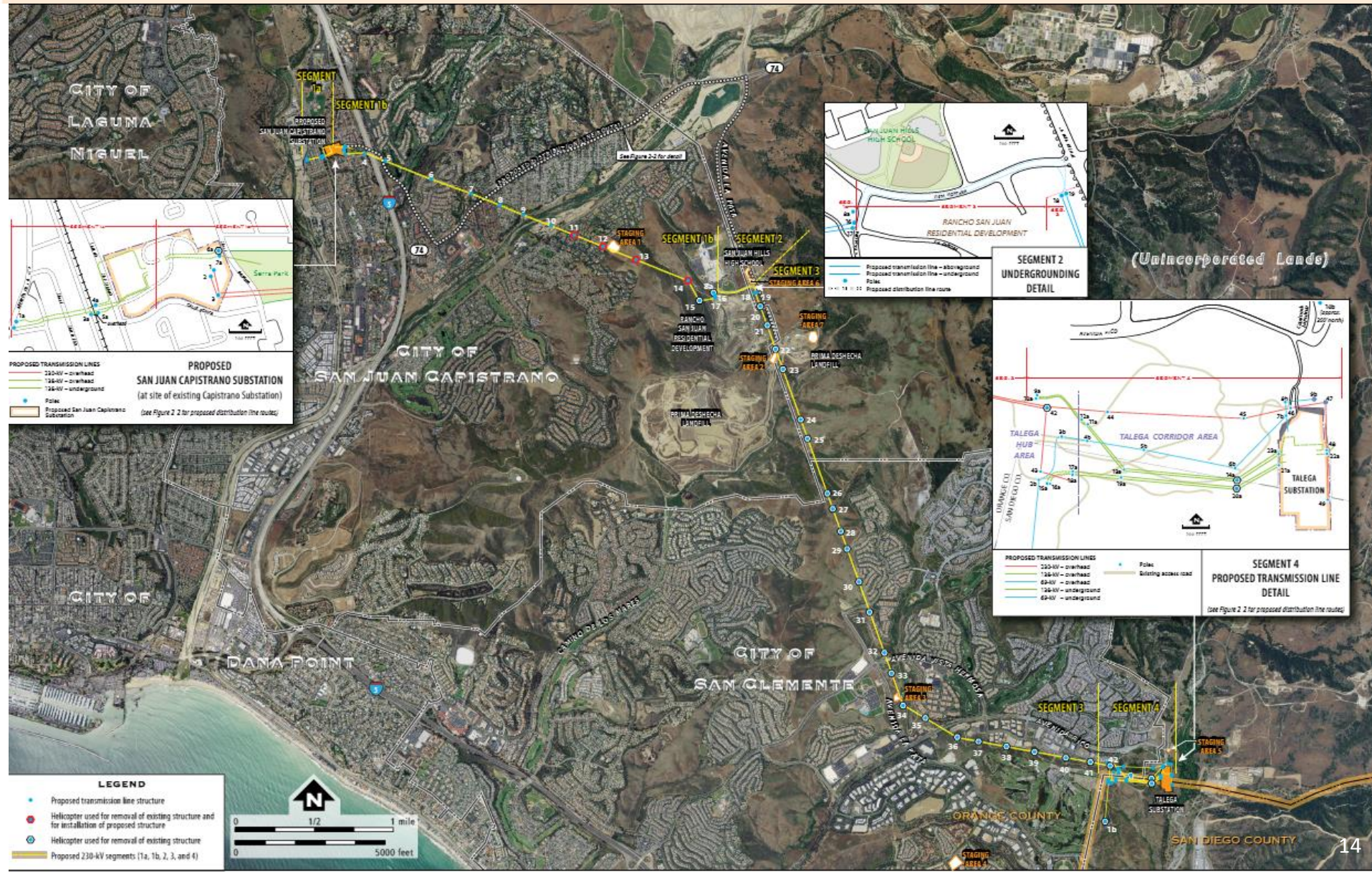
1. Reduce the risk of instances that could result in the loss of power to customers served by the South Orange County 138-kV System through the 10-year planning horizon;
2. Replace inadequate equipment at the Capistrano Substation; and
3. Redistribute power flow of the applicant's South Orange County 138-kV System such that operational flexibility is increased.

13

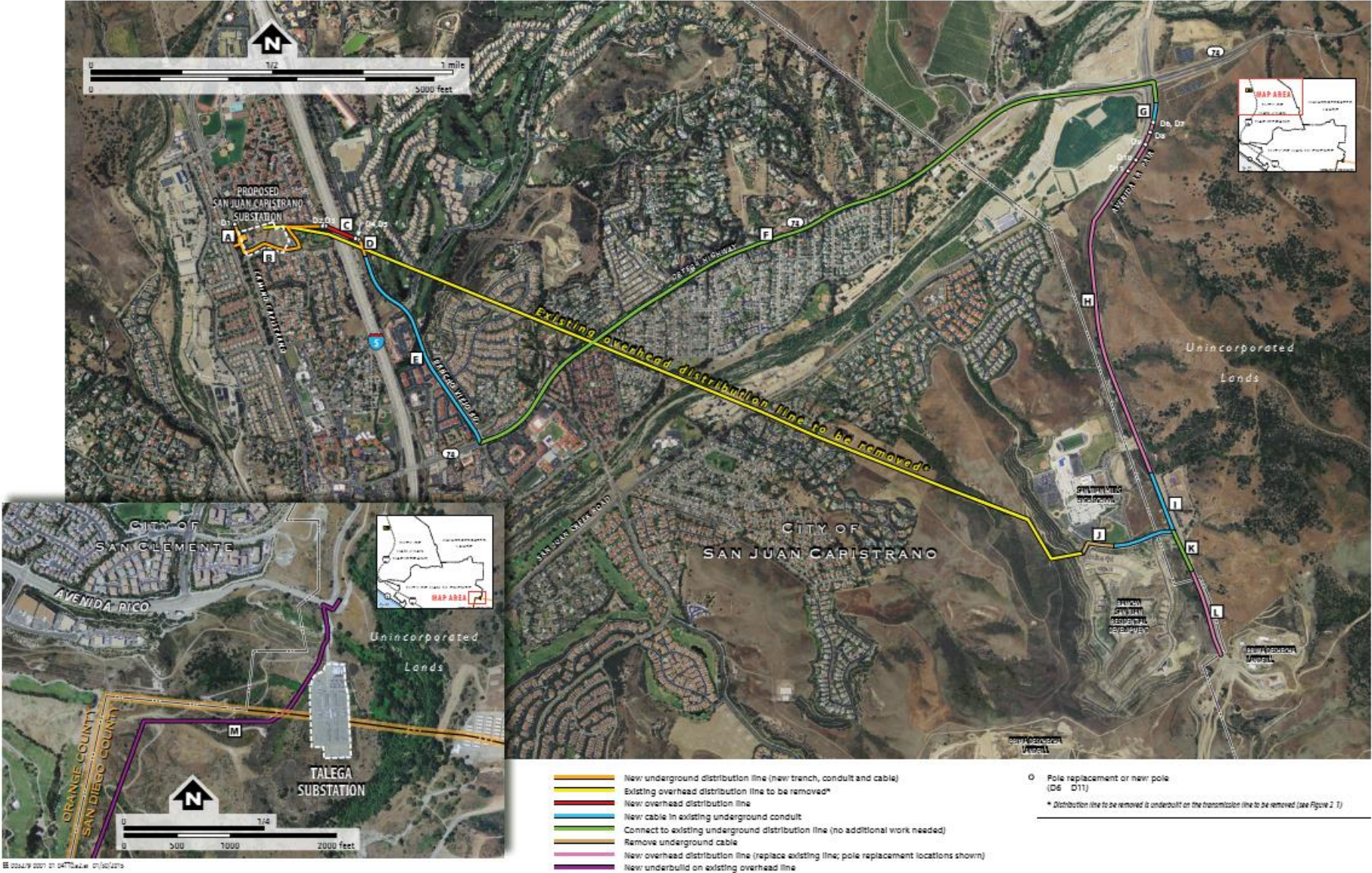
SOCRE DRAFT ENVIRONMENTAL IMPACT REPORT



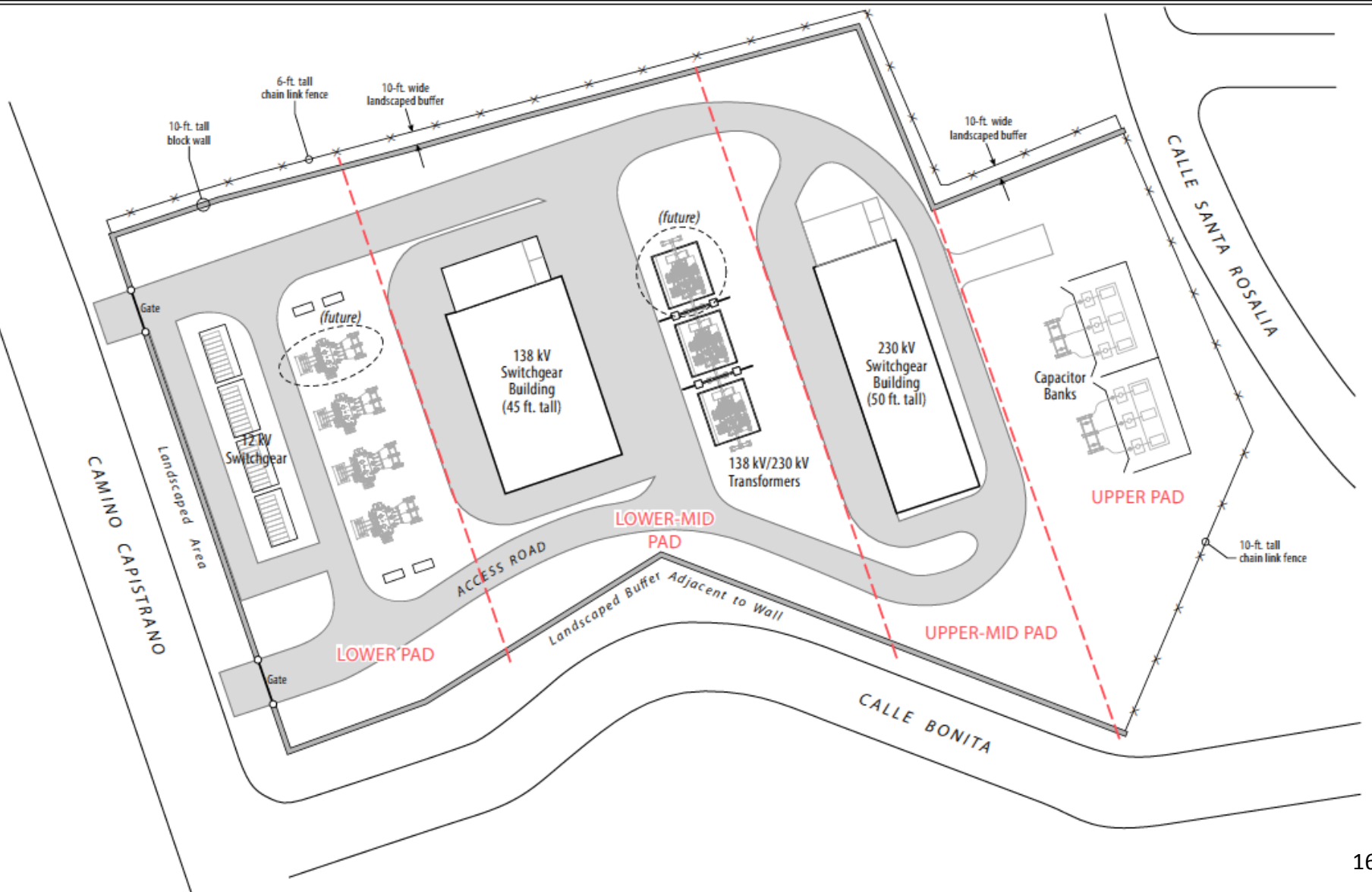
# Proposed Transmission Lines



# Proposed 12-kV Distribution Lines



# Proposed San Juan Capistrano Substation





# Environmental Impacts

The proposed project would have a Less than Significant Impact with Mitigation on the following resources:

- Aesthetics
- Biological Resources
- Cultural Resources
- Hazards and Hazardous Materials
- Hydrology and Water Quality
- Land Use and Planning
- Noise
- Public Services and Utilities



# Environmental Impacts

The proposed project would have a Significant Impact on the following resources:

- Air Quality
- Traffic and Transportation
- Cumulative Impacts on Traffic and Transportation



# Air Quality

- Reactive organic gases (ROG), particulate matter less than or equal to 10 microns in diameter ( $PM_{10}$ ), and particulate matter less than or equal to 2.5 microns in diameter ( $PM_{2.5}$ ) would exceed South Coast Air Quality Management District (SCAQMD) thresholds during construction.
- Emissions of  $PM_{10}$  and  $PM_{2.5}$  during various substation and transmission line construction phases are above the SCAQMD's local significance thresholds.
- Mitigation:
  - Fugitive dust emission controls and vehicle emission reduction measures.



# Transportation and Traffic

- Project traffic along Camino Capistrano (City of San Juan Capistrano) during partial road closures
- Full road closures along Camino Capistrano, Via Pamplona, and Calle San Diego (City of San Juan Capistrano)
- Mitigation:
  - Advance notification of full road closures



Photo source: Google 2015.



# Cumulative Impacts

- Transportation and Traffic:
  - Significantly contribute to cumulative traffic impacts along Camino Capistrano (City of San Juan Capistrano) during partial road closures
- Mitigation:
  - Advance notification of partial and full road closures



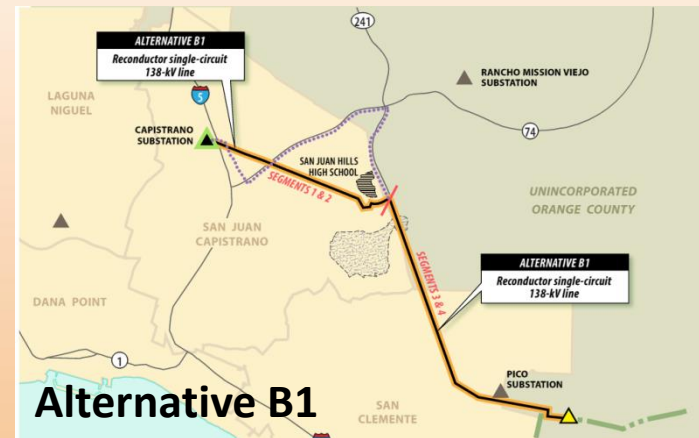
# Alternatives to the Proposed Project

## Alternatives Screening Report

- Twelve alternatives identified
- Ten alternatives were carried forward to the EIR

## Environmentally Superior Alternatives

- Alternative B1: Reconductor Laguna Niguel-Talega 138-kV Line
- Alternative D: SCE 230-kV Loop In to Reduced-Footprint Substation at Landfill



SOCRE DRAFT ENVIRONMENT



# For More Information

**CPUC Website for the  
Environmental Review of the SOCRE Project**

*<http://tinyurl.com/clsee4g>*



# Thank you!

We will take a short break before inviting the public to submit verbal comments

24

**SOCRE DRAFT ENVIRONMENTAL IMPACT REPORT**





# Verbal Comments

- Fill out Speaker Request form and turn into Jessica.
- Speakers will be invited to the podium one-by-one.
- Each speaker will have 2 minutes to submit their comments. A one minute warning will be provided.
- The audience shall maintain order and allow speakers to talk during their turn without interruption.
- Additional time may be provided to speakers at the end depending available time.
- All verbal comments will be recorded by the transcriptionist.
- We will not to respond to all verbal comments made tonight; the purpose of tonight's meeting is to record comments so that we can respond fully in the Final EIR.

