

New information concerning a proposed Southern California Edison Company project in your area.



## PROJECT UPDATE

### Triton 115/12 Kilovolt Substation

October 2008

Southern California Edison (SCE) Company is providing an important update to the community regarding the proposed Triton Substation. The project was introduced to the public back in April 2008, through an Open House and community information pieces. In anticipation of the project's November filing to the California Public Utilities Commission, SCE would like to share with the community new information regarding its preferred site for the project.

#### PROJECT HISTORY

Back in April 2008, SCE presented to the community its plans for a new substation project. Introduced as Triton Substation, the project consists of constructing a new 115/12 kilovolt substation that would serve the cities of Temecula, Murrieta and unincorporated southwestern Riverside County. The purpose of this project is to strengthen SCE's electrical network in order to maintain reliability and meet the area's forecasted electrical demands due to population and density growth.

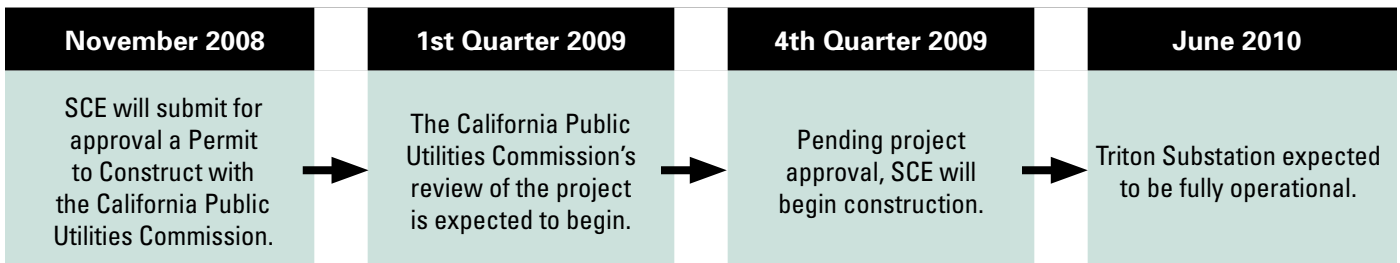
When first presented to the community, SCE had identified a possible site for the Triton Substation. Located in the City of Temecula on the southwest corner of Nicolas Road and Los Choras Ranch Road,

this nine acre site was presented to the public as a potentially preferred location for the substation. As part of its public outreach activities, SCE conducted an open house and informed the community, city officials and surrounding residents about this site.

#### PROJECT STATUS

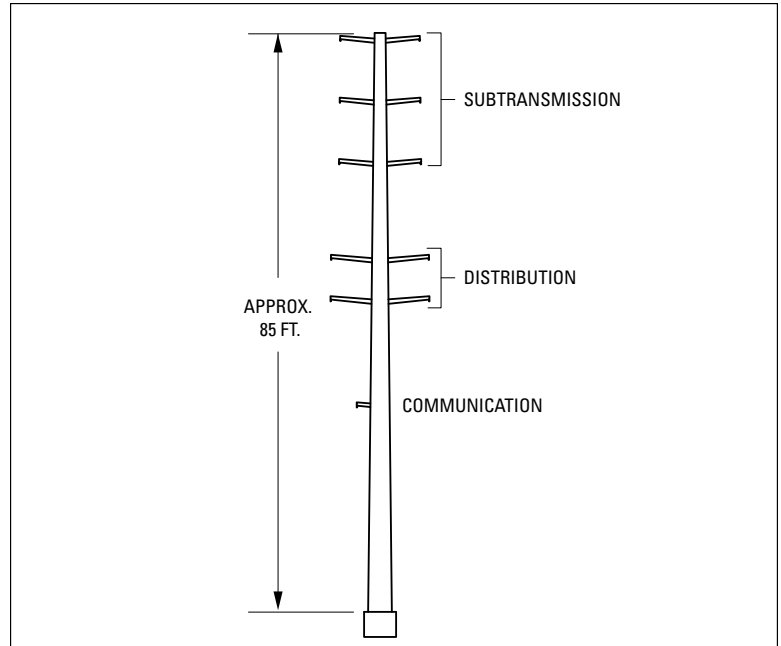
Following the open house, SCE continued evaluating the site for constructability and environmental feasibility in preparation for its filing with the California Public Utilities Commission for project approval. At the same time, due to changes in the real estate market, SCE was able to research and identify other available sites. The project team located a new potential site that is better suited to meet the requirements for the layout and design of a substation.

#### PROJECT TIMELINE

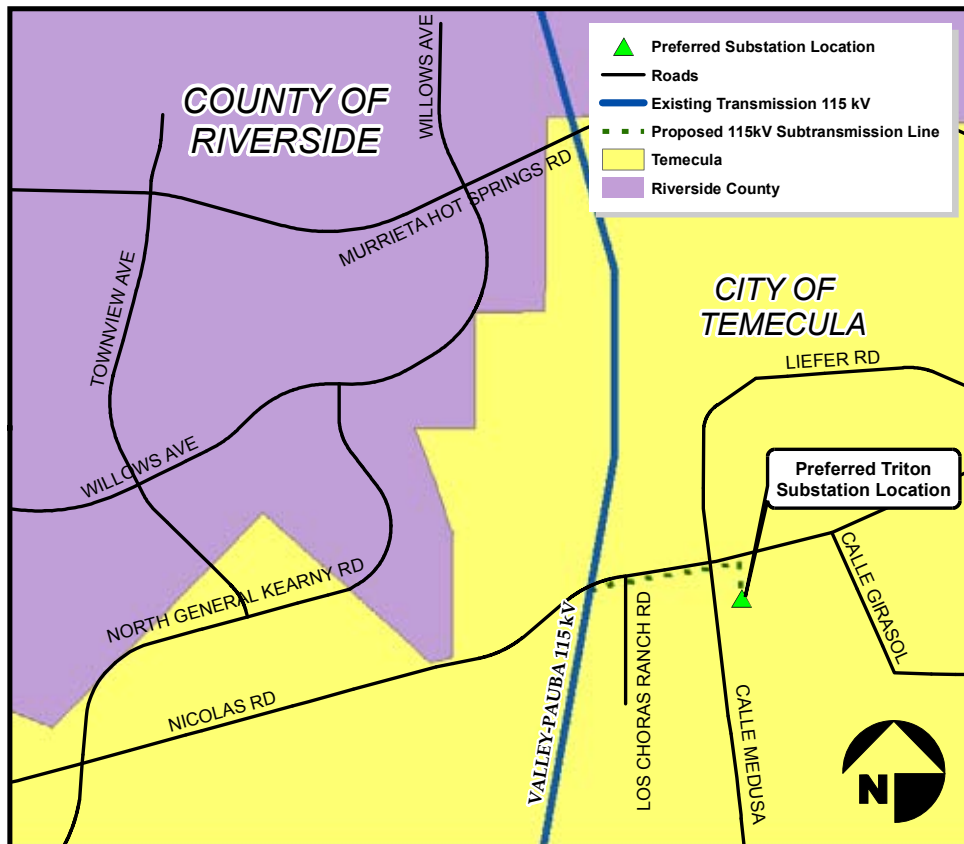


## NEW PROJECT INFORMATION

The new SCE preferred site is a 10 acre property located on the southeast corner of Nicolas Road and Calle Medusa in the City of Temecula. The site is located near the existing Valley-Auld-Pauba 115 kilovolt subtransmission line that will power Triton Substation. The project would require the construction of a new subtransmission line segment, approximately 1,300 feet in length, which will connect the substation to the Valley-Auld-Pauba line. This line will run east along the south side of Nicolas Road within existing SCE right-of-way. SCE will replace nine wood poles with seven engineered tubular steel poles. Each tubular steel pole is approximately 85 feet in height.



**Front view of a typical (Triton Substation) engineered, double circuit, base mounted, tubular steel, sub-transmission, suspension pole with two distribution circuits and two communication circuits.**



## SUMMARY OF PROJECT DESCRIPTION

The Triton Substation will be a distribution substation that will serve as the control and transfer point of electricity for distribution to customers. The Triton Substation will be an unattended, low-profile substation. Electricity will be delivered to the proposed substation from the existing Valley-Auld-Pauba 115

kilovolt subtransmission line. The electricity will then be reduced to 12 kilovolts and sent along distribution lines to local homes and businesses. SCE will also build new distribution getaways and a new telecommunications system. Landscaping around the four walls of the substation will be consistent with the surrounding landscape of the community to the extent practicable.



**Existing view facing south on Nicolas Road and the corner of Calle Medusa towards the proposed site.**



**Simulation of view facing south on Nicolas Road and the corner of Calle Medusa towards the proposed site.**

## PROJECT APPROVAL PROCESS

As part of the project review and approval process for the Triton Substation project, SCE must submit a Permit to Construct application to the California Public Utilities Commission for approval. The California Public Utilities Commission is the state regulatory agency that sets electricity rates and grants permits for transmission power lines and substations.

The application for this permit requires an environmental review under the California Environmental Quality Act. The California Public Utilities Commission will review the application to ensure the project's compliance with all applicable laws and will seek public comment on the project. SCE's site selection will be reviewed as part of this process. Once the process is complete, the California Public Utilities Commission will take one of three possible actions: approve the project as filed, approve it with modifications, or deny the application.

### For More Information

For more information on the project, visit <http://www.sce.com/triton>. If you have any questions or comments or would like to be added to the project mailing list, contact:

**Viet Tran**  
**Region Manager**  
**Southern California Edison**  
**San Jacinto Valley Service Center**  
**(951) 928-8352**  
[viet.tran@sce.com](mailto:viet.tran@sce.com)

### About Southern California Edison

An Edison International (NYSE:EIX) company, Southern California Edison is the largest electric utility in California, serving a population of more than 13 million via 4.8 million customer accounts in a 50,000-square-mile service area within Central, Coastal and Southern California. In order to continue powering California's growing population and economy, SCE plans to invest \$17 billion over the next five years to expand and strengthen its electric system infrastructure.



SOUTHERN CALIFORNIA  
**EDISON**<sup>®</sup>

An EDISON INTERNATIONAL<sup>®</sup> Company