

Appendix A

Scoping Report



Scoping Report

SOUTHERN CALIFORNIA EDISON'S

Devers-Mirage 115 kV Subtransmission System Split Project

Prepared for
California Public Utilities Commission

September 2008



Scoping Report

SOUTHERN CALIFORNIA EDISON'S

Devers-Mirage 115 kV Subtransmission System Split Project

Prepared for
California Public Utilities Commission

September 2008

225 Bush Street
Suite 1700
San Francisco, CA 94104
415.896.5900
www.esassoc.com

Los Angeles

Oakland

Olympia

Petaluma

Portland

Sacramento

San Diego

Seattle

Tampa

Woodland Hills

207059



TABLE OF CONTENTS

Devers-Mirage 115 kV Subtransmission System Split Project Scoping Report

	<u>Page</u>
1. Introduction	1
2. Description of the Project	1
Project Summary	2
Project Location	2
3. Opportunities for Public Comment	2
Notification	2
Public Scoping Meeting	3
4. Summary of Scoping Comments	3
Commenting Parties	4
Comments Received During the Scoping Period.....	4
5. Consideration of Issues Raised in Scoping Process	9

Appendices

- A Notice of Preparation
- B Newspaper Notices
- C Project Website Notification
- D Scoping Meeting Attendance Sheet
- E Scoping Meeting Presentation
- F Scoping Comment Letters

List of Tables

Table 1 Parties Submitting Comments during the Devers-Mirage 115 kV Subtransmission System Split Project EIR Scoping Process	4
---	---

SCOPING REPORT

Devers-Mirage 115 kV Subtransmission System Split Project Scoping Report

1. Introduction

This report provides an overview of the written and oral comments received by the California Public Utilities Commission (CPUC) during the public scoping period for the Environmental Impact Report (EIR) that the CPUC is preparing for the Devers-Mirage 115 kV Subtransmission System Split Project (the Proposed Project).¹

CEQA Guidelines Section 15083 provides that a “Lead Agency may...consult directly with any person...it believes will be concerned with the environmental effects of the project.” Scoping is the process of early consultation with the affected agencies and public prior to completion of a Draft EIR. Section 15083(a) states that scoping can be “helpful to agencies in identifying the range of actions, alternatives, mitigation measures, and significant effects to be analyzed in depth in an EIR and in eliminating from detailed study issues found not to be important.” Scoping is an effective way to bring together and consider the concerns of affected State, regional, and local agencies, the project proponent, and other interested persons (CEQA Guidelines Section 15083(b)).

Scoping is not conducted to resolve differences concerning the merits of a project or to anticipate the ultimate decision on a proposal. Rather, the purpose of scoping is to help ensure that a comprehensive and focused EIR will be prepared that provides a firm basis for the decision-making process.

This report is intended for use by the public to have access to and understand the comments received during the scoping period. It includes verbal and written public comments received during the scoping period (April 15, 2008 to May 15, 2008). The CPUC will use this report as a tool to ensure the preparation of a comprehensive and focused EIR. Pursuant to CEQA Guidelines Section 15082, all public comments *will be considered*² in the EIR process.

¹ The California Public Utilities Commission is the lead agency under the California Environmental Quality Act (CEQA) for the preparation of an EIR for the Proposed Project.

² Comments not within the scope of CEQA will not be addressed through the CEQA Process.

2. Description of the Project

Project Summary

The EIR will examine the environmental impacts associated with construction and operation of the Devers-Mirage 115 kV Subtransmission System Split Project, and identify and evaluate a reasonable range of alternatives to the Proposed Project. The Proposed Project includes the following major elements:

- Replacement of approximately 5.3 miles of existing 115 kilovolt (kV) single-circuit subtransmission lines with new higher capacity double-circuit 115 kV subtransmission lines and replacement of support structures within existing SCE right-of-ways (ROWs) and franchise locations (public ROWs) between Farrell and Garnet Substations in the City of Palm Springs;
- Construction of a new 115 kV subtransmission line from Mirage Substation south to Interstate 10, adjacent to the east side of Tri-Palm Estates and within SCE's existing ROWs or franchise locations;
- Looping the existing Devers-Coachella 220 kV transmission line from an existing ROW to the south for approximately 0.8 of a mile on double-circuit lattice steel towers to Mirage Substation, located near the community of Thousand Palms;
- Installation of a new 280 megavolt amperes (MVA) 200/115 kV transformer, two new 220 kV circuit breakers, and five new 115 kV circuit breakers at SCE's existing Mirage Substation; and
- Subtransmission line reconfigurations at the intersections of Portola Avenue and Gerald Ford Drive, Bob Hope Drive and Dinah Shore Drive, and Varner Road and Date Palm Drive.

The Proposed Project would also include additional equipment and relay installations at Mirage, Concho, Indian Wells, Santa Rosa, Eisenhower, Farrell, Garnet, Thornhill, and Tamarisk Substations. SCE also proposes to transfer existing fiber optic cable to the new support structures and install new fiber optic and digital telecommunications equipment as part of the Proposed Project.

Project Location

The Proposed Project would be located within eastern Riverside County, including portions of the cities of Palm Springs, Rancho Mirage, Palm Desert, Cathedral City, and Indian Wells, and unincorporated areas of Riverside County, including the Thousand Palms community.

3. Opportunities for Public Comment

Notification

On Tuesday, April 15, 2008, the CPUC published and distributed a Notice of Preparation (NOP) to advise interested local, regional, and State agencies, and interested public, that an EIR would be prepared for the Proposed Project. The NOP solicited both written and verbal comments on the

EIR's scope during a 30-day comment period and provided information on a forthcoming public scoping meeting. Additionally, the NOP presented the background, purpose, description, and location of the Proposed Project, potential issues to be addressed in the EIR, and contact information for additional information regarding the project.

In addition to the NOP, the CPUC notified the public about the public scoping meeting through newspaper legal advertisements and the project website. The NOP, newspaper legal advertisements, and the project website notification are presented in Appendices A, B, and C, respectively. Notifications provided basic project information, the date, time, and location of the scoping meeting, and a brief explanation of the public scoping process.

The CPUC published legal advertisements in *The Desert Sun* on Sunday, April 20, 2008, and Sunday, April 27, 2008, as well as *The Desert Post Weekly* on Thursday, April 24, 2008. Additionally, an electronic copy of the NOP was posted on the CPUC's website at: <http://www.cpuc.ca.gov/Environment/info/esa/devers-mirage/devers.html>.

The comment period extended through May 15, 2008. The public was encouraged to submit written comments on the scope, content, and format of the environmental document by mail, facsimile, or electronic mail to the CPUC.

Public Scoping Meeting

The CPUC conducted a scoping meeting on Tuesday, April 29, 2008. The public scoping meeting was held from 6:00 p.m. to 8:00 p.m. in the Mary Stuart Rogers Gateway Building at the California State University San Bernardino Palm Desert Campus at 37-500 Cook Street, Palm Desert, California. Approximately seven people attended the meeting, including two members of the public as well as Eric Chiang (CPUC), Douglas Cover, Matthew Fagundes, and Rachel Baudler (ESA), and Milissa Marona (SCE). The sign-in sheet from the scoping meeting is provided in Appendix D. Meeting attendees were encouraged to sign in and were provided with materials including presentation slides, a comment card, and a speaker card. Copies of the NOP were available upon request.

A presentation (Appendix E) was given which included an overview of the environmental review process, the regional context, project background, project objectives, project description, project alternatives, and role of the public comments. Following the presentation public comments were taken and documented by a note taker from ESA. These public comments are included in the *Comments Received during Scoping Period* section presented below. The attendees were encouraged to submit written comments.

4. Summary of Scoping Comments

Eight letters were received during the scoping period. Appendix F contains copies of the submitted written comments.

Commenting Parties

The following individuals and organizations submitted comments on the scope of the EIR. These comments are organized by date of receipt. See Appendix F for copies of the comment letters.

**TABLE 1
PARTIES SUBMITTING COMMENTS DURING THE
DEVERS-MIRAGE 115 KV SUBTRANSMISSION SYSTEM SPLIT PROJECT EIR SCOPING PERIOD**

Name	Organization	Date
Dave Singleton	Native American Heritage Commission	April 17, 2008
Steve Smith	South Coast Air Quality Management District	April 22, 2008
Sandy Hesnard	California Department of Transportation Division of Aeronautics	April 23, 2008
David M. Van Dorpe	US Army Corps of Engineers	May 6, 2008
Mark L. Johnson	Coachella Valley Water District	May 8, 2008
Mojahed Salama (1)	Riverside County Transportation Department	May 12, 2008
Mojahed Salama (2)	Riverside County Transportation Department	May 12, 2008
Thomas C. MacMaster	Individual	May 14, 2008

Comments Received During the Scoping Period

The following discussion summarizes both the oral and written comments received during the public scoping period. For more detailed information, please see Appendix F, which contains written comments submitted during the scoping period.

Specific comments are categorized by topic areas to enable easy review of the comments.

Aesthetics

- Commenter owns two hundred acres of undeveloped land along the east side of SCE's existing 115 kV ROW where the Mirage-Santa Rosa 115 kV portion of the Proposed Project would be constructed. The commenter expressed concern that the land east of this portion of the Proposed Project will be developed with up to 3,000 units within the next decade and that the Proposed Project could degrade views of the mountains from those units. The commenter supports the Mirage-Santa Rosa 115 kV Alternative Route #5 because it would require the new circuit to be underground and out of sight for most of the route. (Arthofer)
- Commenter would like to know if there will be "new support structures" and buildings constructed in the Thornhill Substation. If so, will the structures be taller than 15 feet. (MacMaster)
- Riverside County Transportation Department prefers that the transmission line be put underground when and if possible. (RCTD)

Air Quality

- Commenter requests a copy of the Draft EIR upon its completion, as well as all appendices or technical documents related to the air quality analysis and electronic versions of all air quality modeling and health risk assessment files. (SCAQMD)
- SCAQMD recommends that the Lead Agency use its CEQA Air Quality Handbook as guidance when preparing its air quality analysis. Alternatively, the lead agency may wish to consider using the California Air Resources Board approved URBEMIS 2007 Model, available on the SCAQMD website. (SCAQMD)
- The Lead Agency should identify and calculate any potential adverse air quality impacts that could occur from all phases of the project and all air pollutant sources related to the project, from construction, demolition, and operations. This typically includes, but is not limited to:
 - construction-related air quality impacts such as emissions from the use of heavy-duty equipment from grading, earth-loading/unloading, paving, architectural coatings, off-road mobile sources (e.g., heavy-duty construction equipment) and on-road mobile sources (e.g., construction worker vehicle trips, material transport trips);
 - operation-related air quality impacts such as emissions from stationary sources (e.g., boilers), area sources (e.g., solvents and coatings), and vehicular trips (e.g., on- and off-road tailpipe emissions and entrained dust); and
 - impacts from indirect sources, that is, sources that generate or attract vehicular trips; (SCAQMD)
- The SCAQMD requests that the lead agency quantify PM_{2.5} emissions and compare the results to the recommended PM_{2.5} significance thresholds. (SCAQMD)
- The SCAQMD recommends calculating localized air quality impacts and comparing the results to localized significance thresholds (LSTs). LSTs can be used in addition to the recommended regional significance thresholds as a second indication of air quality impacts when preparing a CEQA document. When preparing the air quality analysis for the proposed project, SCAQMD recommends that the lead agency perform a localized significance analysis by either using the LSTs developed by the SCAQMD or performing dispersion modeling as necessary. (SCAQMD)
- The SCAQMD recommends that lead agencies for projects generating or attracting vehicular trips, especially heavy-duty diesel-fueled vehicles, perform a mobile source health risk assessment. An analysis of all toxic air contaminant impacts due to the decommissioning or use of equipment potentially generating such air pollutants should also be included. (SCAQMD)
- The SCAQMD CEQA Air Quality Handbook contains information to help the Lead Agency identify possible air quality mitigation measures for the project, measures for

controlling construction-related emissions, and other measures to reduce air quality impacts from land use projects. (SCAQMD)

- The SCAQMD is willing to work with the Lead Agency to ensure that project-related emissions are accurately identified, categorized, and evaluated. (SCAQMD)

Cultural Resources

- Commenter recommends that CPUC contact the appropriate California Historic Resources Information Center to perform a record search to determine:
 - if a part or the entire area of potential effect (APE) has been previously surveyed for cultural resources;
 - if any known cultural resources have already been recorded in or adjacent to the APE;
 - if the probability is low, moderate, or high that cultural resources are located in the APE; and
 - if a survey is required to determine whether previously unrecorded cultural resources are present. (Native American Heritage Commission)
- If an archaeological inventory survey is required, the final state is the preparation of a professional report detailing the findings and recommendations of the records search and field survey. The final report containing site forms, site significance, and mitigation measures should be submitted immediately to the planning department. All information regarding site locations, Native American human remains, and associated funerary objects should be in a separate confidential addendum, and not be made available for public disclosure. The final written report should be submitted within 3 months after work has been completed to the appropriate regional archaeological information center. (Native American Heritage Commission)
- CPUC should contact the NAHC for a Sacred Lands File (SLF) search of the project area and information on tribal contacts in the project vicinity who may have information on cultural resources in or near the APE. CPUC should provide NAHC site identification as follows: USGS 7.5-minute quadrangle citation with name, township, range and section. This will assist NAHC with the SLF. (Native American Heritage Commission)
- NAHC recommends that CPUC contact the Native American contacts on the list attached to their comment letter, to get their input on the effect of potential project impact. In many cases, a culturally-affiliated Native American tribe or person will be the only source of information about the existence of a cultural resource. (Native American Heritage Commission)

- Commenter states that lack of surface evidence of archeological resources does not preclude their subsurface existence. (Native American Heritage Commission)
- Lead agencies should include in their mitigation plan provisions for the identification and evaluation of accidentally discovered archeological resources, per CEQA §15064.5 (f) of the California Code of Regulations (CEQA Guidelines). In areas of identified archaeological sensitivity, a certified archaeologist and a culturally affiliated Native American, with knowledge in cultural resources, should monitor all ground-disturbing activities. (Native American Heritage Commission)
- Lead agencies should include in their mitigation plan provisions for the disposition of recovered artifacts, in consultation with culturally affiliated Native Americans. (Native American Heritage Commission)
- Lead agencies should include provisions for discovery of Native American human remains or unmarked cemeteries in their mitigation plans. CEQA Guidelines §15064.5(d) requires the lead agency to work with the Native Americans identified by the NAHC if the Initial Study identifies the presence or likely presence of Native American human remains within the APE. CEQA Guidelines provide for agreements with Native American groups, identified by the NAHC, to ensure the appropriate and dignified treatment of Native American human remains and any associated grave goods. Health and Safety Code §7050.5, Public Resources Code §5097.98 and CEQA Guidelines §15064.5(d) mandate procedures to be followed in the event of an accidental discovery of any human remains in a location other than a dedicated cemetery. (Native American Heritage Commission)
- Lead agencies should consider avoidance, as defined in CEQA Guidelines §15370 when significant cultural resources are discovered during the course of project planning or execution. (Native American Heritage Commission)

Hydrology and Water Quality

- The project lies within and outside the area of the Whitewater River Basin Thousand Palms Flood Control Project, which will provide regional flood control to a portion of the Thousand Palms area. Coachella Valley Water District (CVWD) is currently in the design phase of this flood control project. Upon completion of the design phase, developers and property owners within the area may be required to dedicate right-of-way for regional flood control facilities and/or participate in the financing of a portion of these facilities. Until construction of the flood control project is complete, the developer shall comply with Riverside County Ordinance 458.12. (Coachella Valley Water District)
- The Proposed Project area is shown to be subject to shallow flooding and is designated Zone AO, with depths of one to three feet on the Federal Flood Insurance Rate maps. (Coachella Valley Water District)
- Prior to the approval of the proposed Subtransmission System project, the developer shall comply with Riverside County Ordinance 458.12 as amended in the preparation of on-site

flood protection facilities for this project. The developer will be required to pay fees and submit plans to CVWD as part of the flood management review. Flood protection measures shall include establishing a finished floor/slab elevation at or above the flood depth, constructing erosion protection for the foundation of the structures and allowing reasonable conveyance of off-site flow through the property. (Coachella Valley Water District)

- Construction of block walls may be in violation of Ordinance 458.12. When CVWD reviews a project for compliance with Ordinance 458.12, block walls are reviewed carefully and seldom found to be compatible with the goals of Ordinance 458.12. Block walls can cause diversion and concentration of storm flows onto adjacent properties and thus be in violation of Ordinance No. 458.12 and California drainage law. (Coachella Valley Water District)
- Walls must be constructed in a manner that does not increase the risk of off-site storm water flows on to adjacent properties. This can be accomplished by constructing open sections in the wall to accommodate flow-through. To achieve this, CVWD requires that at least 50 percent of the total lineal footage of the wall be constructed of wrought iron fencing or similar material that will provide for storm water flow-through. Construction materials used within the open sections must extend the entire vertical wall height so not to obstruct flow at the finish grade/surface. (Coachella Valley Water District)
- Project leaders will need to coordinate with Imperial Irrigation District (IID) and the County including the Economic Development Agency (EDA) on how the project will impact the EDA project on Monterey and Varner since this project includes relocation of (IID) poles. The EDA project is currently under construction and includes improving both Varner (Monterey to a few hundred feet east of Ramon) and Monterey (Varner to Ramon) to ultimate improvement, which includes Widening, Curb & Gutter and Sidewalks. (Riverside County Transportation Department)
- Commenter does not believe their project (the Whitewater River Basin flood control project) has any right-of-way conflicts with the Devers-Mirage project. (USACE)
- The Whitewater River Basin flood control project (WRBFCP) may impact some parcels. Commenter's consultant, PB World, had preliminary discussions with Mr. Pascual Garcia, ROW Transmission Specialist, regarding their project's levee alignments. WRBFCP has since made some changes to those alignments which they would like to coordinate with the design team for the Devers-Mirage project. Commenter requests to be provided a POC with whom they can share design information. (USACE)

Land Use

- The County has the northwest corner of the intersection of Dinah Shore and Bob Hope. The remaining three quarters are within the City of Rancho Mirage. (RCTD)
- Commenter expressed the importance of the proposed project to be consistent with the Coachella Valley Multiple Species Habitat Conservation Plan. (Taylor)

Noise

- Commenter states that current SCE workers and other subcontractors who use the Thornhill Substation generate noise from their vehicles (radios playing, motors running), which is a constant irritant to the residents adjacent to the substation. Additional buildings and worker-visits will cause more noise and be an eyesore in a residential neighborhood. (MacMaster)

Hazards

- California Public Utilities Code Section 21658 prohibits structural hazards associated with utility poles and lines near airports. Should any of the transmission lines be in the vicinity of Palm Springs International Airport or exceed 200 feet in height, a Notice of Proposed Construction or Alteration (Form 7460-1) will be required by the Federal Aviation Administration (FAA) in accordance with Federal Aviation Regulation, Part 77 "Objects Affecting Navigable Airspace." (Caltrans)

Traffic and Transportation

- Commenter would like to know if additional traffic (trucks, workers) will be using the Thornhill Substation on a regular basis after the project is completed. (MacMaster)
- The Proposed Project will need an encroachment permit anytime crews work or cross a county road. (Riverside County Transportation Department)

5. Consideration of Issues Raised in Scoping Process

A primary purpose of this Scoping Report is to document the process of soliciting and identifying comments from interested agencies and the public. The Scoping process provides the means by which the CPUC can determine those issues that interested participants consider to be the principal areas for study and analysis. Every issue that has been raised that falls within the scope of CEQA during scoping will be addressed in the EIR.

APPENDIX A

Notice of Preparation

**PUBLIC UTILITIES COMMISSION
505 VAN NESS AVENUE
SAN FRANCISCO, CA 94102-3298**



To: State Clearinghouse, Responsible and Trustee Agencies, Property Owners
& Interested Parties

From: Eric Chiang, Environmental Project Manager

Subject: NOTICE OF PREPARATION OF AN ENVIRONMENTAL IMPACT REPORT (EIR) AND
SCOPING MEETING:
Southern California Edison's Devers-Mirage 115 kV Subtransmission System Split Project
(A.08-01-029)

Date: April 15, 2008

Description of Proposed Project. Southern California Edison (SCE), in its California Public Utilities Commission (CPUC) application (A.08-01-029), filed on January 31, 2008, seeks a Permit to Construct (PTC) the Devers-Mirage 115 kV Subtransmission System Split Project (Proposed Project), which includes the following major elements:

- replacement of approximately 5.3 miles of existing 115 kilovolt (kV) single-circuit subtransmission lines with new higher capacity double-circuit 115 kV subtransmission lines and replacement of support structures within existing SCE right-of-ways (ROWs) and franchise locations (public ROWs) between Farrell and Garnet Substations in the City of Palm Springs;
- construction of a new 115 kV subtransmission line from Mirage Substation south to Interstate 10, adjacent to the east side of Tri-Palm Estates and within SCE's existing ROWs or franchise locations;
- looping the existing Devers-Coachella 220 kV transmission line from an existing ROW to the south for approximately 0.8 of a mile on double-circuit lattice steel towers to Mirage Substation, located near the community of Thousand Palms;
- installation of a new 280 megavolt amperes (MVA) 200/115 kV transformer, two new 220 kV circuit breakers, and five new 115 kV circuit breakers at SCE's existing Mirage Substation; and
- replacement of four poles at the intersection of Bob Hope Drive and Dinah Shore Drive.

The Proposed Project would also include additional equipment and relay installations at Mirage, Concho, Indian Wells, Santa Rosa, Eisenhower, Farrell, Garnet, Thornhill, and Tamarisk Substations located in the cities of Palm Springs, Rancho Mirage, Indian Wells, Cathedral City, Palm Desert, and unincorporated areas of Riverside County, including the Thousand Palms community. SCE also proposes to transfer existing fiber optic cable to the new support structures and install new fiber optic and digital telecommunications equipment as part of the Proposed Project.

The objective of the Proposed Project is to maintain electric system reliability, enhance operational flexibility, and serve projected electrical demand in the cities of Palm Springs, Rancho Mirage, Cathedral City, Palm Desert, Indian Wells, and unincorporated areas of Riverside County, including the Thousand Palms community. Construction of the project is scheduled to begin in the second quarter of 2009 and be operational by mid-2010.

Location of the Proposed Project.

The Proposed Project is located within eastern Riverside County, including portions of the cities of Palm Springs, Rancho Mirage, Palm Desert, Cathedral City, and Indian Wells, and unincorporated areas of Riverside County, including the Thousand Palms community. See the map that follows this notice for an illustration of the project area.

Issues To Be Addressed In The EIR.

The EIR will address impacts of the construction, operation, and maintenance of the Proposed Project. The EIR

will also discuss and analyze alternatives to the Proposed Project. Alternatives to the Proposed Project that will be considered may include, but not be limited to, a No Project alternative as well as several alignment variations. Other alternatives may be added based on input received during this Notice of Preparation (NOP) scoping period or by the EIR team in response to potentially significant environmental impacts identified during the EIR process.

Specific areas of analysis the EIR will address include aesthetics, agriculture resources, air quality, biological resources, cultural resources, hazards and hazardous materials, hydrology and water quality, land use and planning, mineral resources, noise, population and housing, public services, recreation, transportation and traffic, and utilities and service systems. Where feasible, mitigation measures will be recommended to avoid or reduce potentially significant impacts. Additionally, potential cumulative impacts of the Proposed Project, when considered in context with other past, present, or reasonably foreseeable future projects in the area, will be addressed in the EIR.

Information to be included in the EIR will also be based on input and comments received during the NOP review period. Decision-makers, responsible and trustee agencies under CEQA, property owners, and interested persons and parties will also have an opportunity to comment on the Draft EIR after it is published and circulated for public review. For additional information about the CEQA review of the Proposed Project, go to: <http://www.cpuc.ca.gov/Environment/info/esa/devers-mirage/devers.html>.

Public Scoping Period for this Notice of Preparation.

Due to the time limits mandated by State law, your response must be sent at the earliest possible date, but no later than 30 days after the date of this notice. The public scoping period will close at 5:00 p.m. on **May 15, 2008**. Please include a name, address, and telephone number of a contact person for all future correspondence on this subject.

Please send your comments to:

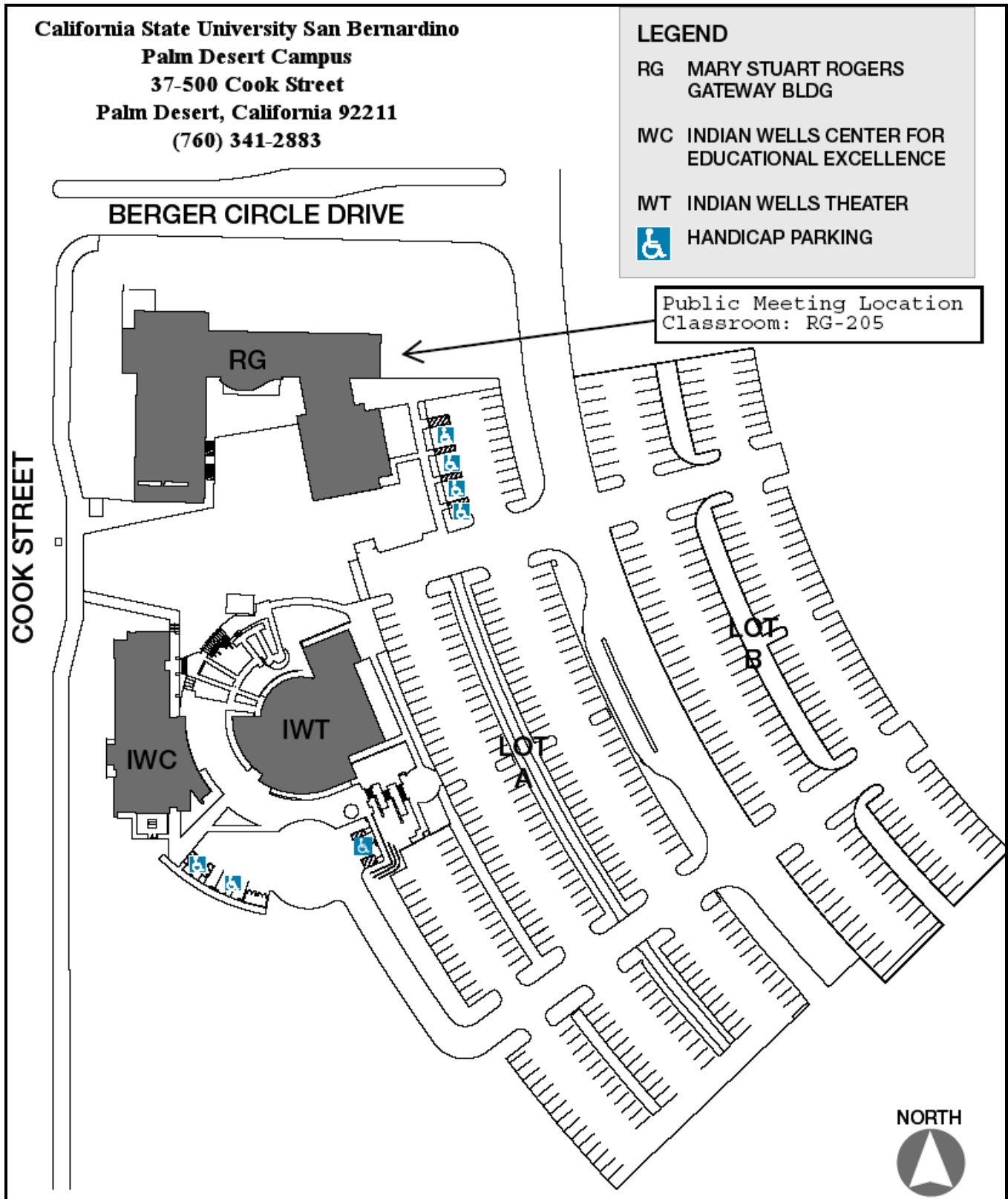
Mr. Eric Chiang
Devers-Mirage 115 kV Subtransmission System Split Project
c/o Environmental Science Associates
1425 N. McDowell Boulevard, Suite 105
Petaluma, CA 94954
Fax: (707) 795-0902
Voicemail: (707) 795-0940
E-mail: devers-mirage@esassoc.com

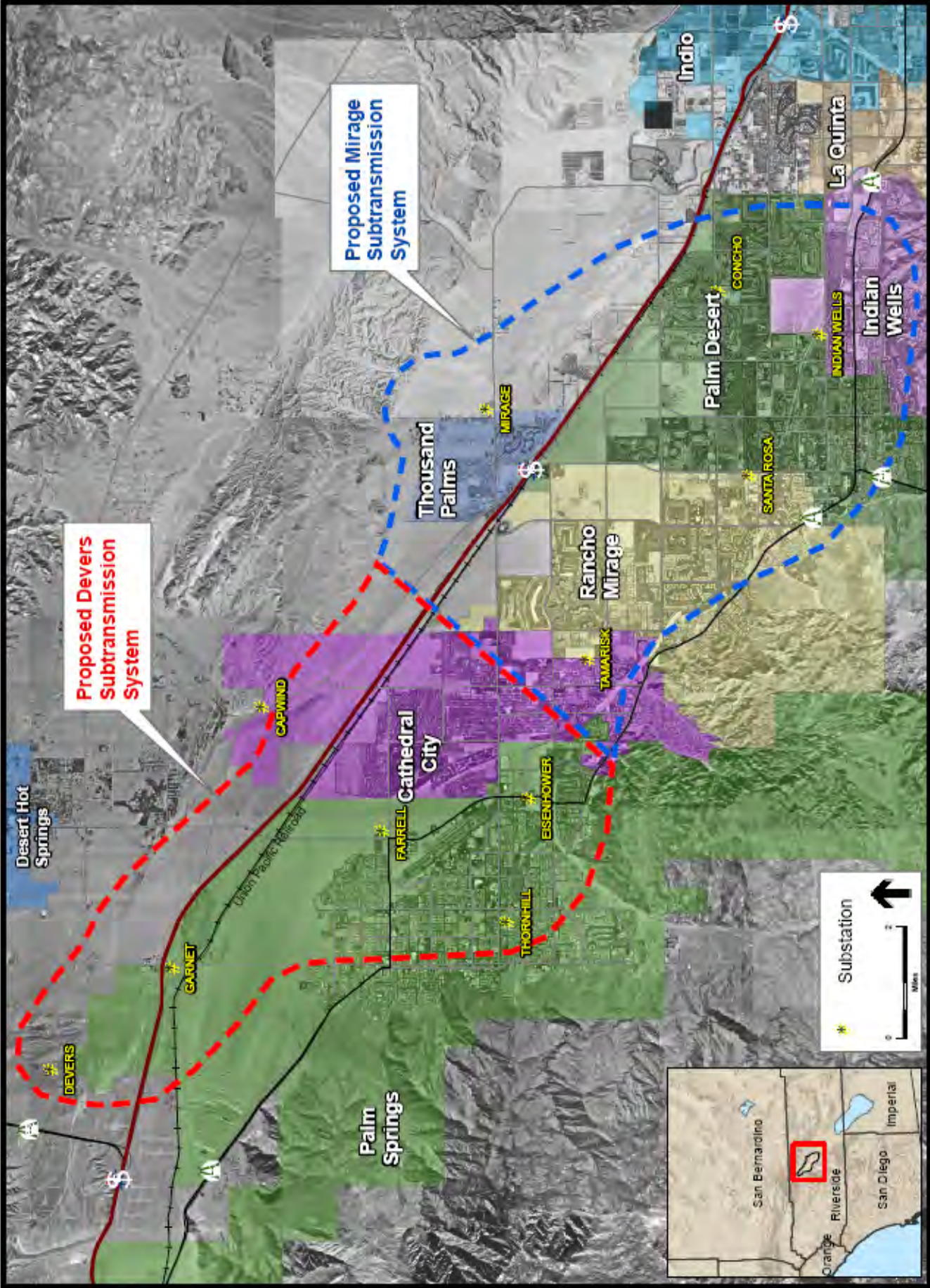
Scoping Meeting.

In order for the public and regulatory agencies to have an opportunity to ask questions and submit comments on the scope of the EIR, a meeting will be held during the NOP scoping period. The scoping meeting will start with a brief presentation providing an overview of the Proposed Project and alternatives identified to date. Subsequent to the presentation, interested parties will be provided an opportunity to ask questions and provide comments about the project. Written comment forms will be supplied for those who wish to submit written comments at the scoping meeting; written comments may also be submitted anytime during the NOP scoping period to the address, fax, or e-mail listed above. The scoping meeting will be held:

Tuesday April 29, 2008
6:00 p.m. – 8:00 p.m.
CSUSB Palm Desert Campus, Mary Stuart Rogers Gateway Building (Classroom RG-205)
37-500 Cook Street (b/w Gerald Ford Dr. and Frank Sinatra Dr.)
Palm Desert, CA 92211
(see map on following page)

REMINDER: Scoping comments will be accepted by fax, e-mail, or postmark through May 15, 2008. Please be sure to include your name, address, and telephone number.





Proposed Devers Subtransmission System

Proposed Mirage Subtransmission System

* Substation
 0 1 2 Miles



APPENDIX B

Newspaper Notices

**PROOF OF PUBLICATION
(2015.5.C.C.P)**

This is space for County Clerk's Filing Stamp

STATE OF CALIFORNIA
County of Riverside

I am a citizen of the United States and a resident of the County aforesaid; I am over the age of eighteen years, and not a party to or interested in the above-entitled matter. I am the principal clerk of a printer of the, **DESERT SUN PUBLISHING COMPANY** a newspaper of general circulation, printed and published in the city of Palm Springs, County of Riverside, and which newspaper has been adjudged a newspaper of general circulation by the Superior Court of the County of Riverside, State of California under the date of March 24, 1988. Case Number 191236; that the notice, of which the annexed is a printed copy (set in type not smaller than non pariel, has been published in each regular and entire issue of said newspaper and not in any supplement thereof on the following dates, to wit:

April 20th, 27th, 2008

All in the year 2008

I certify (or declare) under penalty of perjury that the foregoing is true and correct.

Dated at Palm Springs, California this ----30th, ---- day

of----- April -----, 2008

Signature

Proof of Publication of

No. 1239

**California Public Utilities Commission
Notice of Preparation of an Environmental
Impact Report (EIR) and Scoping Meeting for
the Devers-Mirage 115 kV Subtransmission
System Split Project**

Notice is hereby given that the California Public Utilities Commission (CPUC) has released a Notice of Preparation (NOP) of an Environmental Impact Report (EIR) for the Devers-Mirage 115 kV Subtransmission System Split Project, for public review and comment. The EIR will address site-specific impacts of the construction, operation, and maintenance of the Proposed Project. The EIR will also discuss and analyze alternatives to the Proposed Project. Information to be included in the EIR will also be based on input and comments received during the 30-day NOP scoping period that is now open until 5:00 p.m. on May 15, 2008. The NOP is available for public review on the project website at: <http://www.cpuc.ca.gov/Environment/info/esa/devers-mirage/devers.html>. The website includes further information on the environmental review process for this project, including copies of related public documents, project history, and announcements of all upcoming public meetings. A copy of the NOP may be requested by telephone at (707) 795-0940 or by email at devers-mirage@esassoc.com. Comments may be submitted in writing to: Mr. Eric Chiang, Devers-Mirage 115 kV Subtransmission System Split Project, C/O ESA, 1425 N. McDowell Boulevard, Suite 105, Petaluma, CA 94954, by fax to (707) 795-0902 or by email to devers-mirage@esassoc.com.

Additionally, the CPUC will hold a public scoping meeting on Tuesday, April 29th at the CSUSB Palm Desert Campus, Mary Stuart Rogers Gateway Building (Classroom RG-205), 37-500 Cook Street (b/w Gerald Ford Dr. and Frank Sinatra Dr., Palm Desert, California between 6 p.m. and 8 p.m. Following the end of the public scoping period, the CPUC will prepare a Draft EIR that will consider comments received. Decision-makers, responsible and trustee agencies under CEQA, property owners, and interested persons and parties will also have an opportunity to comment on the Draft EIR after it is published and circulated for public review.

Published: 4/20, 4/27/2008

**PROOF OF PUBLICATION
(2015.5.C.C.P)**

This is space for County Clerk's Filing Stamp

STATE OF CALIFORNIA
County of Riverside

I am a citizen of the United States and a resident of the County aforesaid; I am over the age of eighteen years, and not a party to or interested in the above-entitled matter. I am the principal clerk of the printer of the, DESERT POST WEEKLY, a newspaper of general circulation, printed and published weekly in the city of Cathedral City, County of Riverside, and which newspaper has been adjudged a newspaper of general circulation by the Superior Court of the County of Riverside, State of California under the date of September 4, 2001. Case Number 024022; that the notice, of which the annexed is a printed copy (set in type not smaller than non pariel), has been published in each regular and entire issue of said newspaper and not in any supplement thereof on the following dates, to wit:

April 24th, 2008

All in the year 2008

I certify (or declare) under penalty of perjury that the foregoing is true and correct.

Dated at Palm Springs, California this ---- 8th, ---- day

of----- May -----, 2008



Signature

Proof of Publication of

**California Public Utilities Commission
Notice of Preparation of an Environmental
Impact Report (EIR) and Scoping Meeting for
the Devers-Mirage 115 kV Subtransmission
System Split Project**

Notice is hereby given that the California Public Utilities Commission (CPUC) has released a Notice of Preparation (NOP) of an Environmental Impact Report (EIR) for the Devers-Mirage 115 kV Subtransmission System Split Project, for public review and comment. The EIR will address site-specific impacts of the construction, operation, and maintenance of the Proposed Project. The EIR will also discuss and analyze alternatives to the Proposed Project. Information to be included in the EIR will also be based on input and comments received during the 30-day NOP scoping period that is now open until 5:00 p.m. on May 15, 2008. The NOP is available for public review on the project website at: <http://www.cpuc.ca.gov/Environment/info/esa/devers-mirage/devers.html>. The website includes further information on the environmental review process for this project, including copies of related public documents, project history, and announcements of all upcoming public meetings. A copy of the NOP may be requested by telephone at (707) 795-0940 or by email at devers-mirage@esassoc.com. Comments may be submitted in writing to: Mr. Eric Chiang, Devers-Mirage 115 kV Subtransmission System Split Project, C/O ESA, 1425 N. McDowell Boulevard, Suite 105, Petaluma, CA 94954, by fax to (707) 795-0902 or by email to devers-mirage@esassoc.com.

Additionally, the CPUC will hold a public scoping meeting on Tuesday, April 29th at the CSUSB Palm Desert Campus, Mary Stuart Rogers Gateway Building (Classroom RG-205), 37-500 Cook Street (b/w Gerald Ford Dr. and Frank Sinatra Dr., Palm Desert, California between 6 p.m. and 8 p.m. Following the end of the public scoping period, the CPUC will prepare a Draft EIR that will consider comments received. Decision-makers, responsible and trustee agencies under CEQA, property owners, and interested persons and parties will also have an opportunity to comment on the Draft EIR after it is published and circulated for public review.

Published: 4/24/2008

APPENDIX C

Project Website Notification



STATE OF CALIFORNIA
PUBLIC UTILITIES COMMISSION

SCE Devers-Mirage 115 kV Subtransmission System Split Project

(Application A.08-01-029, filed January 31, 2008)

Welcome to the California Public Utilities Commission (CPUC) website for the California Environmental Quality Act (CEQA) review of proposed construction of Southern California Edison (SCE)'s Devers-Mirage 115 kV Subtransmission System Split Project. An application for this project was submitted to the CPUC on January 31, 2008 (Application [A.08-01-029](#)). This site provides access to public documents and information relevant to the CEQA review process.

Files linked on this page are in Portable Document Format (PDF). To view them, you will need to download the free [Adobe Acrobat Reader](#) if it is not already installed on your PC.

Note: For best results in displaying the largest files (see sizes shown in parentheses below for files larger than 3.0 MB), right-click the file's link, click "Save Target As" to download the file to a folder on your hard drive, then browse to that folder and double-click the downloaded file to open it in Acrobat.

Background

SCE has filed an application with the CPUC to construct the Devers-Mirage 115 kV Subtransmission System Split Project. The CPUC is the CEQA lead agency. The Devers 115 kV Subtransmission System split portion of the project was approved by the California Independent System Operator (CAISO) in 2002 and the Devers-Coachella Valley 220 kV transmission line loop into Mirage Substation portion of the project was approved by CAISO in 2006.

The main components of the Devers-Mirage 115 kV Subtransmission System Split Project, as proposed by SCE, includes: the replacement of approximately 5.3 miles of existing single-circuit 115 kV subtransmission line with new higher capacity double-circuit 115 kV subtransmission line between Farrell and Garnet substations in the City of Palm Springs; construction of a new 115 kV subtransmission line from Mirage Substation south to Interstate 10 (I-10); looping the existing Devers-Coachella 220 kV transmission line from an existing right-of-way (ROW) for approximately 0.8 of a mile on double-circuit lattice steel towers (LSTs) to Mirage Substation. In addition, the project would include installation of one new 280 megavolt amperes (MVA) 220/115 kV transformer, two new 220 kV circuit breakers, and five new 115 kV circuit breakers at SCE's existing Mirage Substation.

The project would also include additional equipment and relays installations at Mirage, Concho, Indian Wells, Santa Rosa, Devers, Eisenhower, Farrell, Garnet, Thornhill, and Tamarisk substations located in the cities of Palm Springs, Rancho Mirage, Indian Wells, Cathedral City, Palm Desert, and unincorporated areas of Riverside County, including the Thousand Palms community. SCE also proposes to transfer existing fiber optic cable to the new support structures and install new fiber optic and digital telecommunications equipment as part of the project.

The project is needed to relieve existing thermal overload conditions on two 115 kV subtransmission lines and to resolve a forecasted voltage problem on the 220 kV transmission system that would exist by 2009. The total cost of the project is estimated to be approximately \$33.3 million. Construction of the project is scheduled to begin in the second quarter of 2009 and be operational by mid-2010.

Environmental Review

On April 15, 2008 the CPUC has published a Notice of Preparation (NOP) of an Environmental Impact Report (EIR) for the Devers-Mirage 115 kV Subtransmission System Split Project. Click [here](#) to view the NOP.

Public Scoping Period for this Notice of Preparation



BACKGROUND

Due to the time limits mandated by State law, your response must be sent at the earliest possible date, but no later than 30 days after the date of this notice. The public scoping period will close at 5:00 p.m. on May 15, 2008. Please include a name, address, and telephone number of a contact person for all future correspondence on this subject.

Scoping Meeting

In order for the public and regulatory agencies to have an opportunity to ask questions and submit comments on the scope of the EIR, a meeting will be held during the NOP scoping period. The scoping meeting will start with a brief presentation providing an overview of the Proposed Project and alternatives identified to date. Subsequent to the presentation, interested parties will be provided an opportunity to ask questions and provide comments about the project. Written comment forms will be supplied for those who wish to submit written comments at the scoping meeting; written comments may also be submitted anytime during the NOP scoping period to the address, fax, or e-mail listed above. The scoping meeting will be held:

Tuesday April 29, 2008
6:00 p.m. – 8:00 p.m.
CSUSB Palm Desert Campus, Mary Stuart Rogers Gateway Building (Classroom RG-205)
37-500 Cook Street (b/w Gerald Ford Dr. and Frank Sinatra Dr.)
Palm Desert, CA 92211

Current Progress

The CPUC is currently in the process of preparing the EIR. The EIR, and other CEQA review documents will be posted on this website when they are available.

Proponent's Environmental Assessment (PEA)

The application and PEA for the Devers-Mirage 115 kV Subtransmission System Split Project may be viewed here. The application was deemed complete by CPUC on February 29, 2008.

To view the Application for the project click [here](#).

To view the PEA for the project click [here](#).

Other Documents Available

Application Deemed Complete Letter (February 29, 2008), click [here](#) to view.

For Additional Information

The CPUC, through its [Environmental Review Team](#), manages [environmental review](#) of the project. To request additional information or to be added to the mailing list, please contact us by email, fax, or phone, as follows:

Project email: devers-mirage@esassoc.com

Project fax: (707) 795-0902

Voicemail: (707) 795-0940

The CPUC's Project Manager in the Energy Division's CEQA unit is:

Mr. Eric Chiang, CPUC Project Manager

California Public Utilities Commission

505 Van Ness Avenue

San Francisco, CA 94102

Tel. (415) 703-1956

Fax (415) 703-2200

To request additional information, please contact us by email at devers-mirage@esassoc.com

This page contains tables and is best viewed with Firefox or Internet Explorer.

Please report any problems to the [Energy Division web coordinator](#).

[Project Home Page](#) - [CPUC Environmental Information](#) - [CPUC Home](#) - [Top](#)

WEBSITE INFO

APPENDIX D

Scoping Meeting Attendance Sheet

Southern California Edison's Devers-Mirage 115 kV Subtransmission System Split Project Environmental Impact Report Public Scoping Meeting Hosted by the California Public Utilities Commission (CPUC)

Meeting Location: CSUSB Palm Desert Campus, Mary Stuart Rogers Gateway Building (Classroom RG-205)
37-500 Cook Street (b/w Gerald Ford Dr. and Frank Sinatra Dr.)
Palm Desert, CA 92211

Date/Time: Tuesday, April 29, 2008 at 6:00 p.m. to 8:00 p.m.

Project CD

[CARS=5]

Name	Affiliation	Address	Email address
Melissa Marona	SCE	2044 Walnut Grove Rosemead	MARONAM@SCE.COM
Jean Taylor	Sierra Club	1850 Smoke Tree* PS CA 92269 Ln	palmcanyon@dc.rn.com
Dan Arthofer	property owner	3 Terra Vista Ct Rancho Mirage CA 92270	
Eric Chiang	CPUC	505 Van Ness Ave SF, CA. 94403	
Rachel Bauer	ESA	225 Bush St SF 94104	

APPENDIX E

Scoping Meeting Presentation

**Southern California Edison Company
Devers-Mirage 115 kV Subtransmission
System Split Project**

**California Public Utilities Commission
Public Scoping Meeting
for Preparation of an
Environmental Impact Report (EIR)**

**April 29, 2008
Palm Desert, California**

Key Players and their Roles

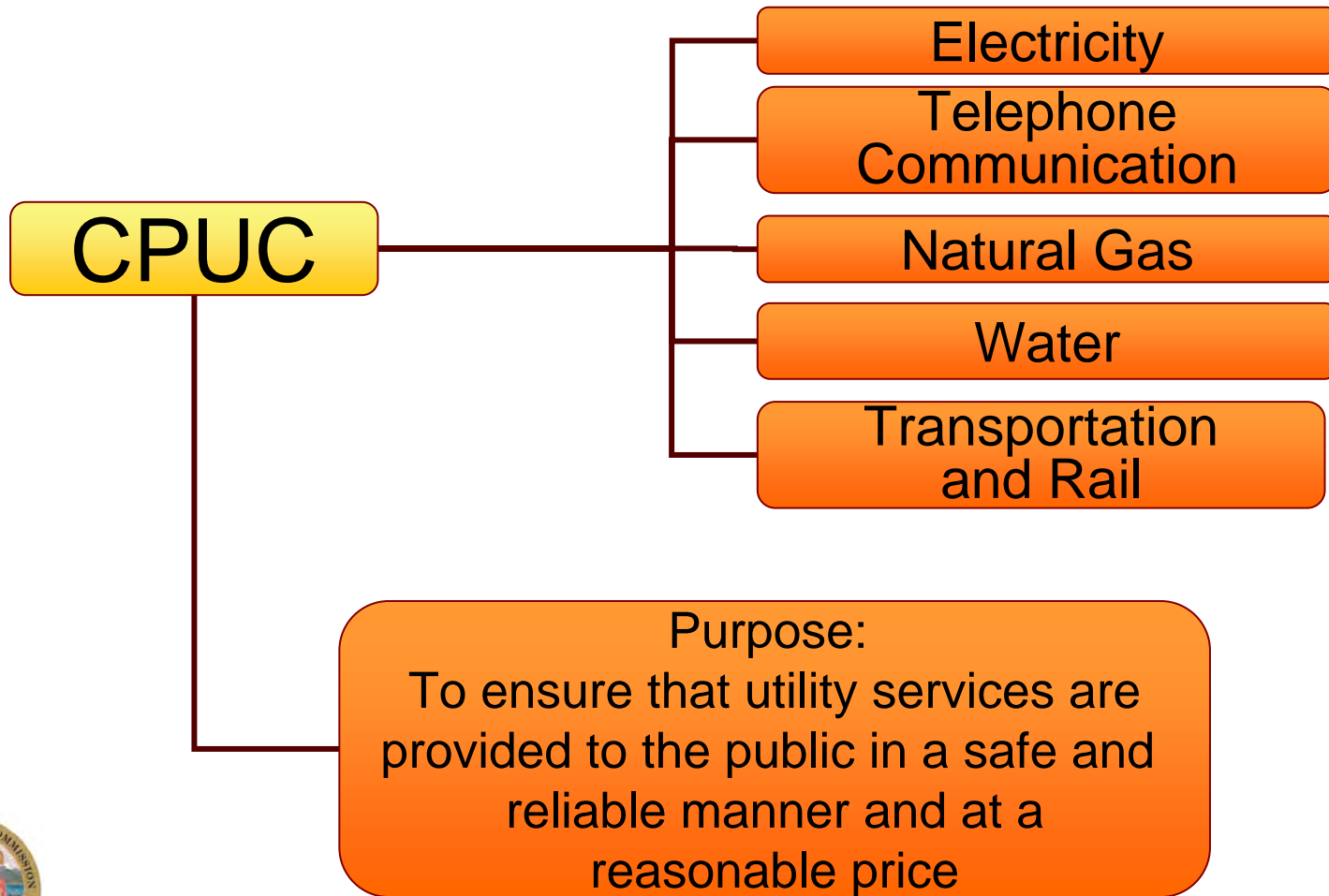
- Eric Chiang, CPUC: Lead Agency under the California Environmental Quality Act (CEQA)
- Doug Cover, Environmental Science Associates (ESA): Environmental consultant for CPUC
- Southern California Edison: Applicant

Meeting Agenda

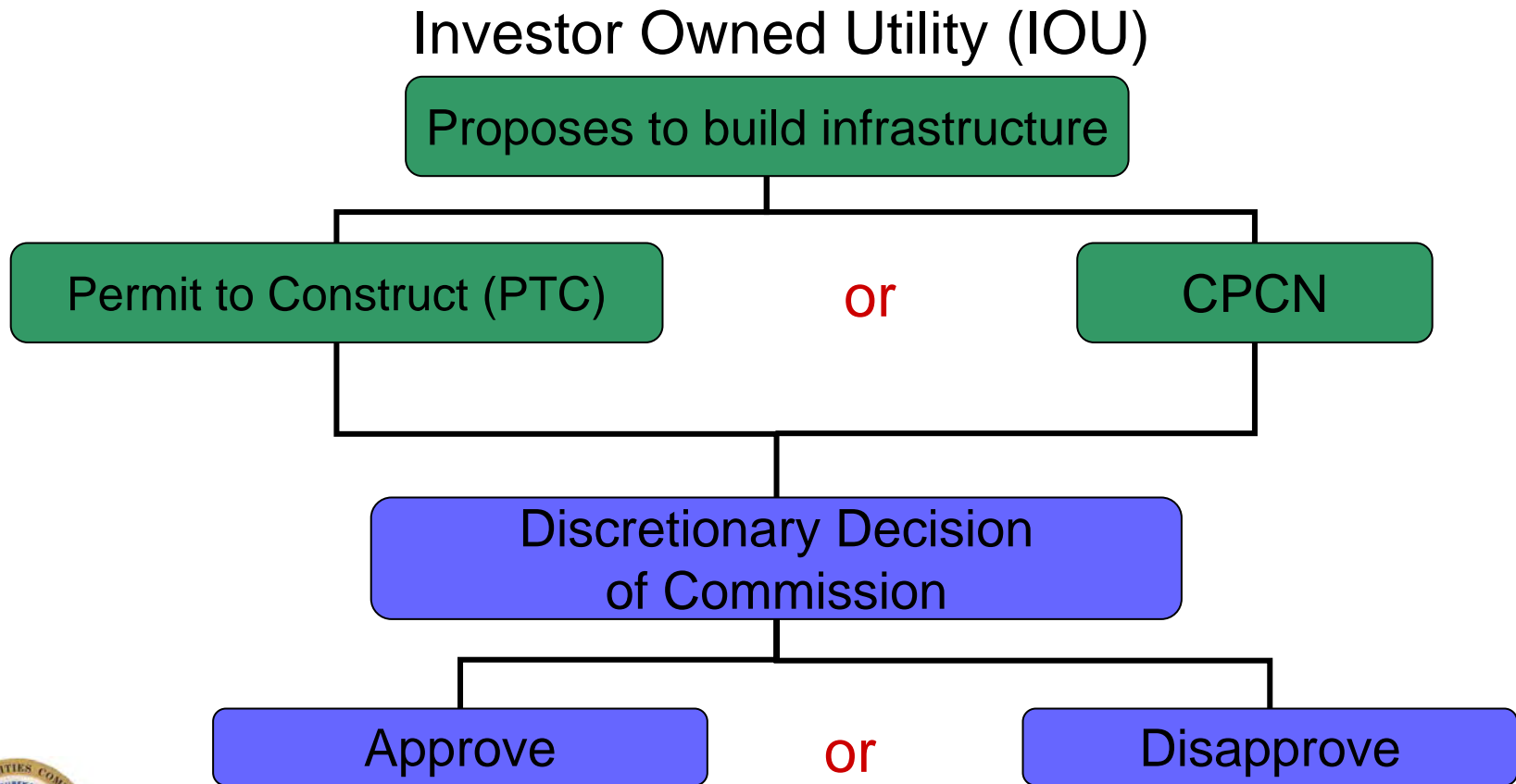
- CPUC Review Process
- Project Overview
 - Background
 - Project Purpose and Need
 - Project Description
- Alternatives
- Next Steps
- Public Comment
 - Speaker cards
 - Comment forms

California Public Utilities Commission

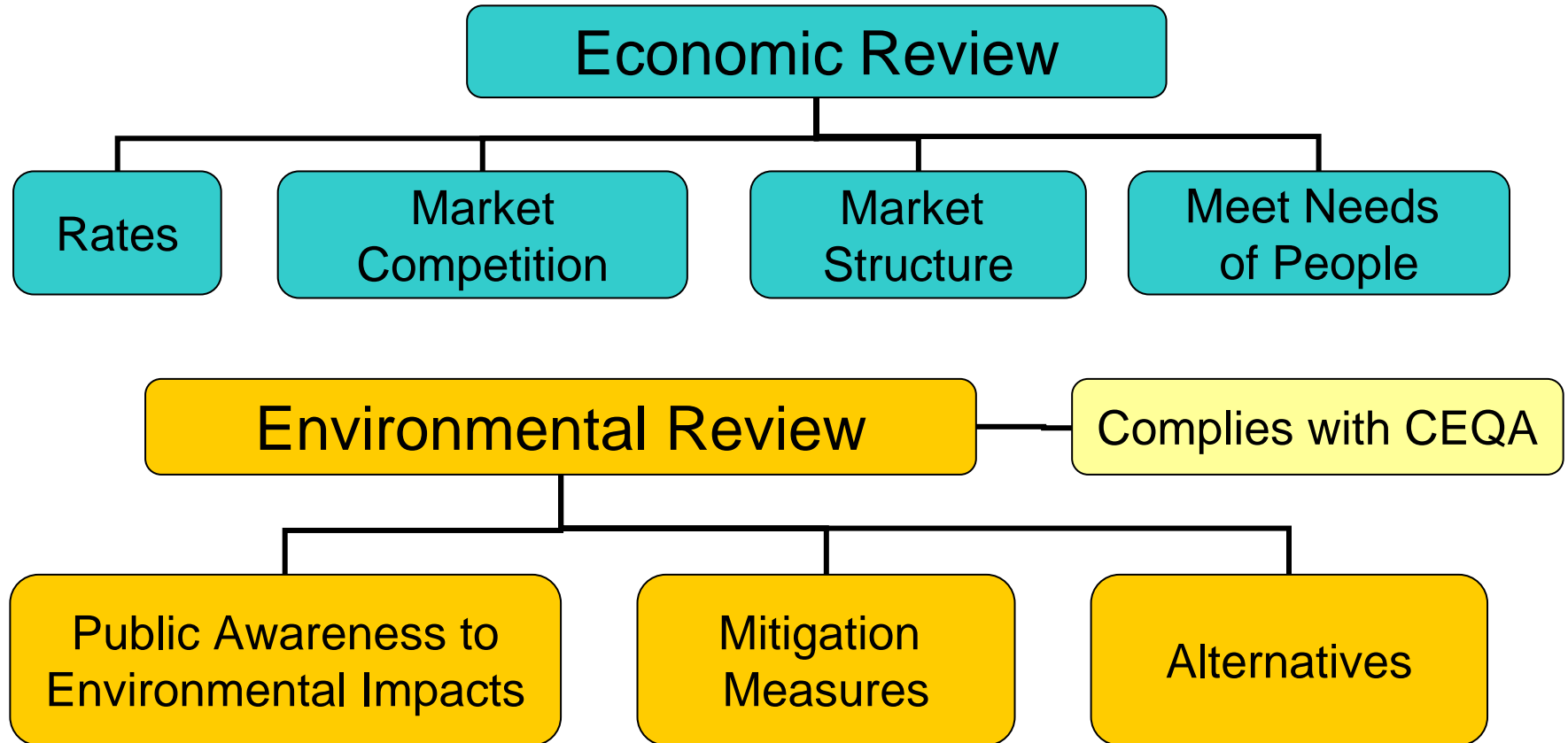
Who does the CPUC regulate?



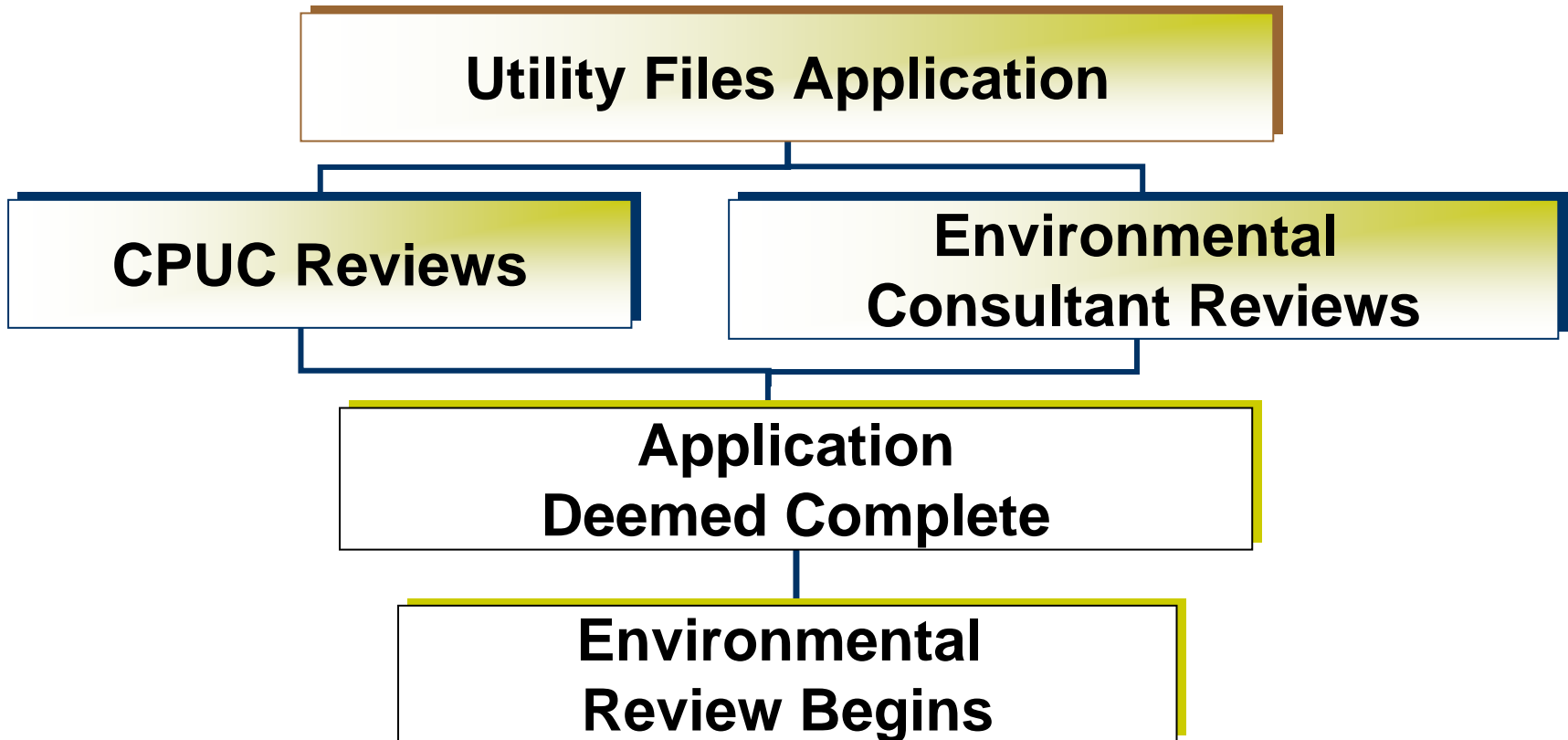
Certificate of Public Convenience and Necessity (CPCN)



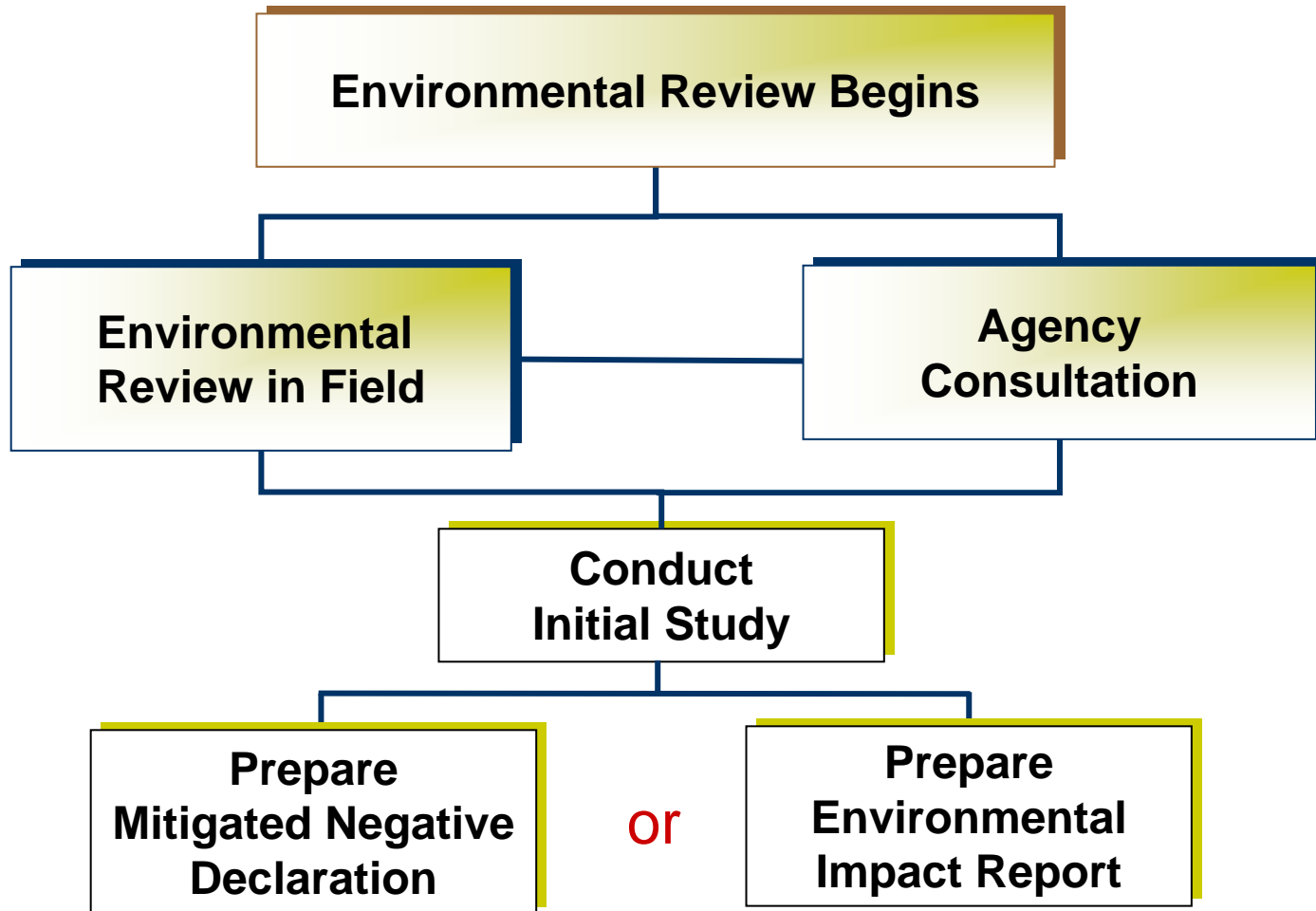
CPUC Review Process



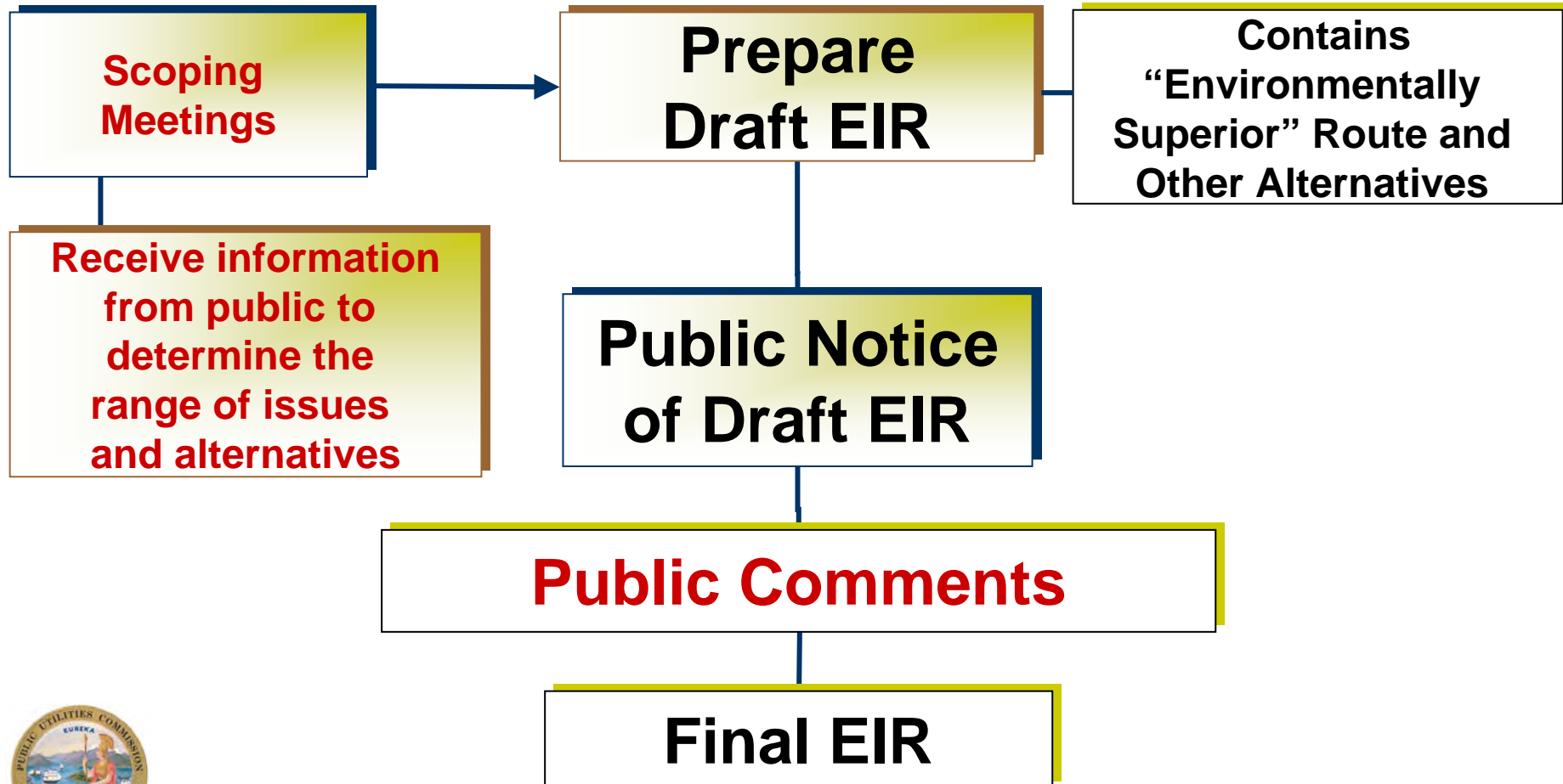
Basic Application and Environmental Review Processes (Step 1)



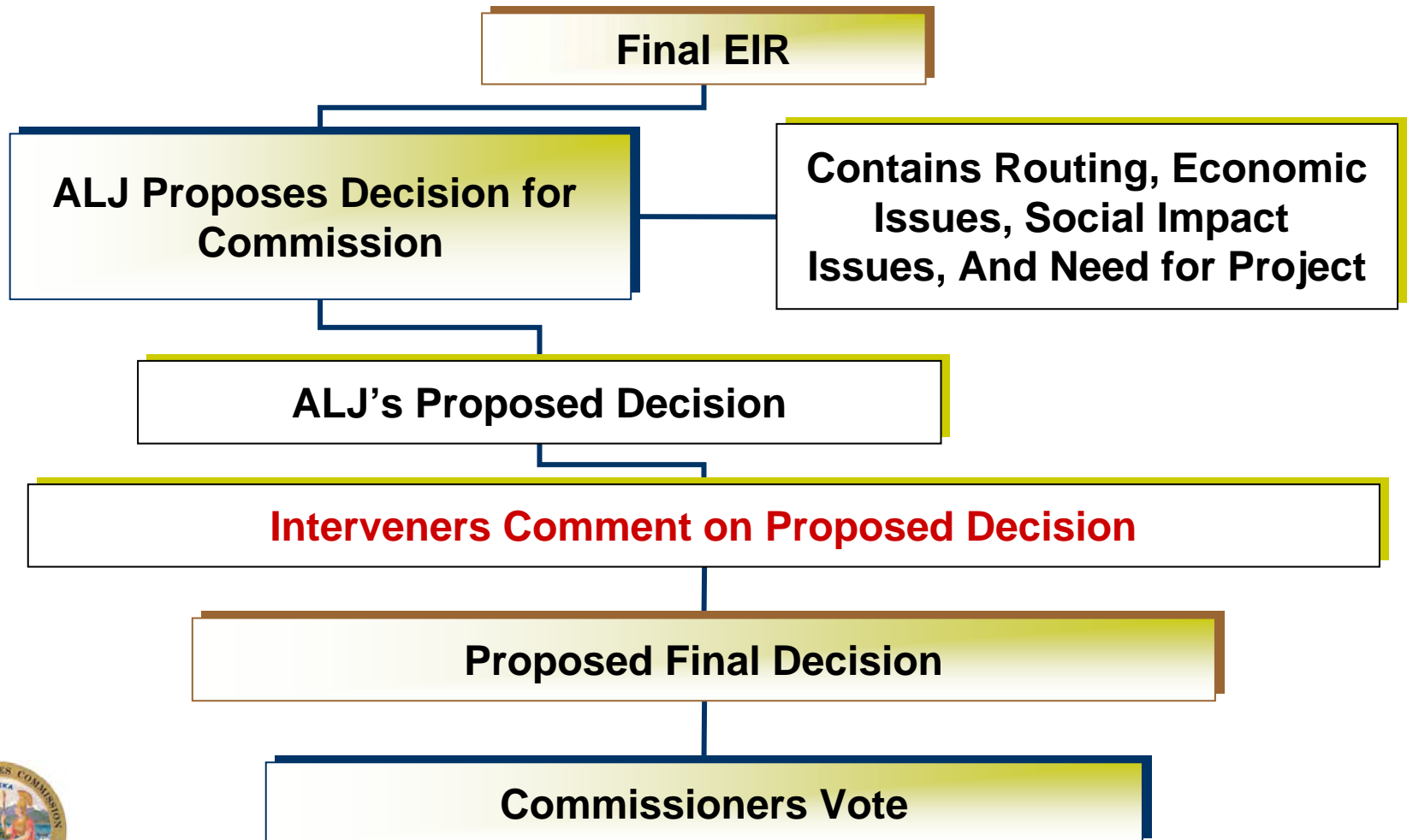
Basic Application and Environmental Review Processes (Step 2)



Basic Application and Environmental Review Processes (Step 3)



Basic Application and Environmental Review Processes (Step 4)





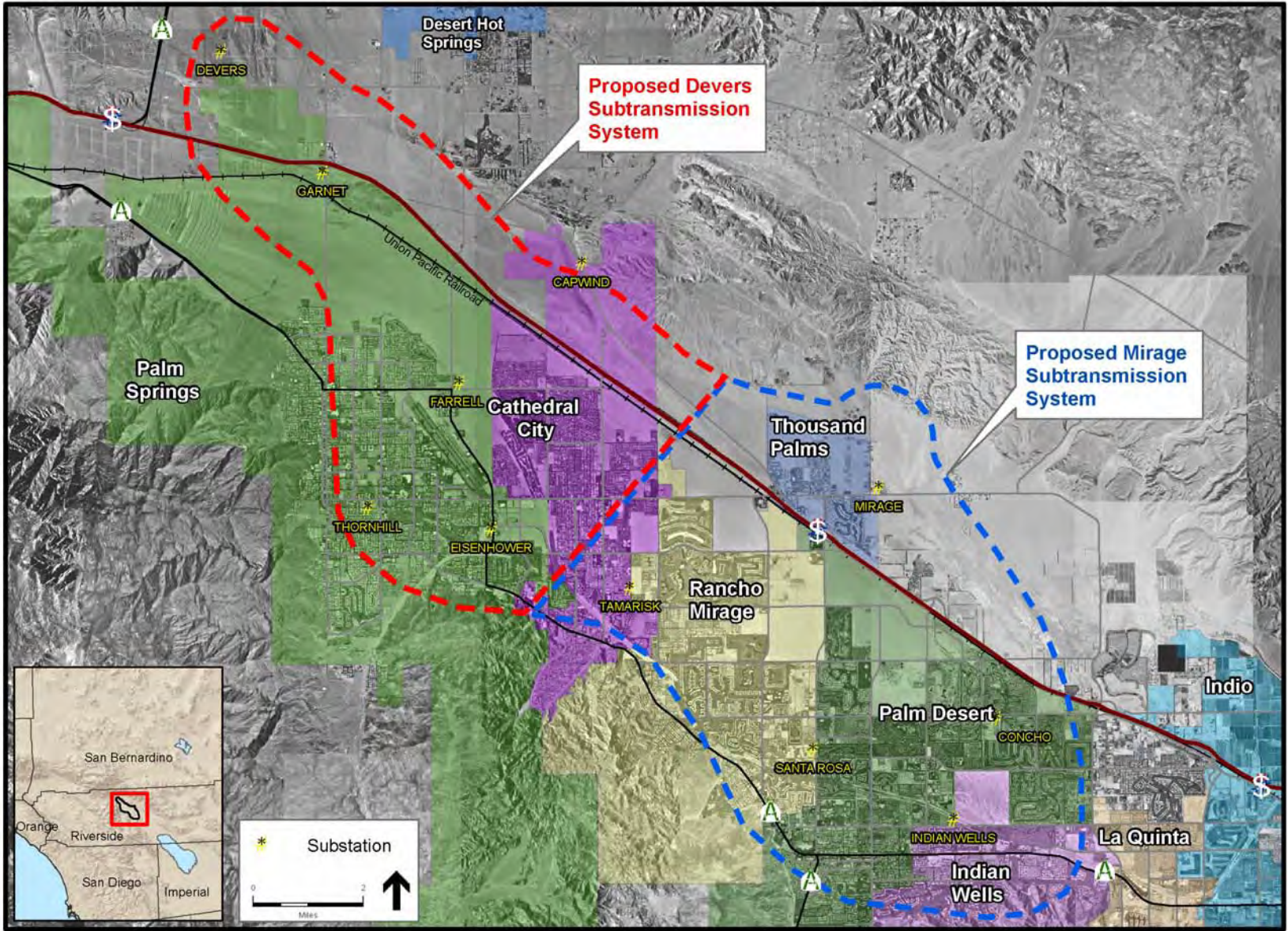
For Additional Information
<http://www.cpuc.ca.gov>



SCE's Project Purpose and Need

- ❑ Relieve existing thermal overload conditions on two 115 kV subtransmission lines
- ❑ Resolve a forecasted voltage problem on the 220 kV transmission system
- ❑ Serve projected electrical demand in the cities of Palm Springs, Rancho Mirage, Cathedral City, Palm Desert, Indian Wells, and unincorporated areas of Riverside County, including the Thousand Palms community
- ❑ Be operational by mid-2010

Project Location



Project Description Overview

- Farrell-Garnet 115 kV Proposed Route
- Mirage-Santa Rosa 115 kV Proposed Route
- Devers-Coachella Valley 220 kV Loop-In
- 115 kV Line Reconfigurations
- Substations

Project Description

□ **Farrell-Garnet 115 kV Proposed Route**

- Replace approximately 5.3 miles of existing single-circuit lines and structures with double-circuit
- Within existing SCE and public road right-of-ways (ROWs)
- General alignment:
 - From Farrell Sub north along the east side of Gene Autry Trail to a point south of the RR
 - Cross to west of Gene Autry Trail
 - NNW (crossing the RR) to a location south of I-10 ROW
 - Continue NW and W along I-10 to Garnet Substation

Project Description (cont'd)

- **Mirage-Santa Rosa 115 kV Proposed Route**
 - Replace approximately 1.5 miles of existing single-circuit lines and structures with double-circuit
 - Within existing SCE and public road ROWs
 - General alignment:
 - From Mirage Sub south adjacent to the east side of Tri-Palm Estates
 - Through the Tri-Palm Estates golf course
 - South of the golf course, cross I-10 to join the existing subtransmission system

Project Description (cont'd)

□ **Devers-Coachella Valley 220 kV Loop-In**

- Loop existing Devers-Coachella 220 kV line to an existing SCE ROW
- South approximately 0.8 mile on double-circuit lattice steel towers to Mirage Substation

□ **115 kV Line Reconfigurations**

- Line reconfigurations at three intersections:
 - Portola and Gerald Ford
 - Dinah Shore and Bob Hope
 - near Varner and Date Palm

Project Description (cont'd)

□ **Substations**

- Installation of additional equipment and relays at Mirage, Concho, Indian Wells, Santa Rosa, Eisenhower, Farrell, Garnet, Thornhill, and Tamarisk Substations

Alternative Alignments

- Farrell-Garnet 115 kV Route #1 Option A
 - Avoid small section of BLM land
- Farrell-Garnet 115 kV Route #2
 - Overhead single-circuit along Gene Autry Trail, Vista Chino Rd, Sunrise Way, San Rafael Rd
 - Underground from San Rafael Rd to Four Seasons Blvd
 - Overhead from Four Seasons Blvd north to the Proposed Route
 - 0.5 mile underground; 5.5 miles overhead

Alternative Alignments (cont'd)

- Farrell-Garnet 115 kV Route #3
 - Along Gene Autry Trail, Vista Chino Rd, Sunrise Way, San Rafael Rd, Indian Canyon Dr then north to Garnet Sub
 - 6.5 miles overhead
- Mirage-Santa Rosa 115 kV Route #5
 - Underground in Ramon Road to Monterey Ave south to Varner Rd
 - Transition to overhead before crossing I-10
 - 1.9 miles underground; 500 feet overhead

Next Steps

- ❑ Notice of Preparation was circulated to solicit input from agencies and the public
- ❑ This meeting is part of the scoping process
- ❑ A Draft EIR will be prepared and circulated for agency and public comment
- ❑ Comments will be considered and addressed in a Final EIR
- ❑ CPUC considers EIR / other factors and issues a draft decision for the Proposed Project
- ❑ CPUC considers comments on draft and alternate decisions and votes on the Project

How to Comment

- Please submit scoping comments no later than Thursday, May 15, 2008:

Mr. Eric Chiang

Devers-Mirage 115kV Subtransmission
System Split Project

c/o Environmental Science Associates

1425 N. McDowell Blvd., Suite 105

Petaluma, CA 94954

Fax: (707) 795-0902

Voicemail: (707) 795-0940

E-mail: devers-mirage@esassoc.com

Website: <http://www.cpuc.ca.gov/Environment/info/esa/devers-mirage/devers.html>

Public Comment

Discussion Guidelines

- ❑ One person to speak at a time
- ❑ Be concise
- ❑ Stay on topic
- ❑ Support everyone's participation
- ❑ Respect others' opinions
- ❑ Comments will be recorded
- ❑ Written comments are encouraged

APPENDIX F

Scoping Comment Letters

NATIVE AMERICAN HERITAGE COMMISSION

915 CAPITOL MALL, ROOM 364
SACRAMENTO, CA 95814
(916) 653-6251
Fax (916) 657-5390
www.nahc.ca.gov
ds_nahc@pacbell.net



April 17, 2008

Mr. Eric Chhiang

CALIFORNIA PUBLIC UTILITIES COMMISSION

505 Van Ness Avenue
San Francisco, CA 94102-3298

Re: SCH# 2008041087; CEQA Notice of Preparation (NOP) draft Environmental Impact Report (DEIR) for the Southern California Edison Devers-Mirage 115kV Subtransmission System Split Project, CPUC; Riverside County, California

Dear Mr. Chiang:

Thank you for the opportunity to comment on the above-referenced document. The Native American Heritage Commission is the state agency designated for the protection of California's Native American cultural resources. The California Environmental Quality Act (CEQA) requires that any project that causes a substantial adverse change in the significance of an historical resource, that includes archeological resources, is a 'significant effect' requiring the preparation of an Environmental Impact Report (EIR per the California Code of Regulations § 15064.5(b)(c) (CEQA Guidelines). In order to comply with this provision, the lead agency is required to assess whether the project will have an adverse impact on these resources within the 'area of potential effect (APE),' and if so, to mitigate that effect. To adequately assess the project-related impacts on historical resources, the Commission recommends the following action:

√ Contact the appropriate California Historic Resources Information Center (CHRIS). Contact information for the 'Information Center' nearest you is available from the State Office of Historic Preservation in Sacramento (916/653-7278). The record search will determine:

- If a part of the entire (APE) has been previously surveyed for cultural resources.
 - If any known cultural resources have already been recorded in or adjacent to the APE.
 - If the probability is low, moderate, or high that cultural resources are located in the APE.
 - If a survey is required to determine whether previously unrecorded cultural resources are present.
- √ If an archaeological inventory survey is required, the final stage is the preparation of a professional report detailing the findings and recommendations of the records search and field survey.
- The final report containing site forms, site significance, and mitigation measures should be submitted immediately to the planning department. All information regarding site locations, Native American human remains, and associated funerary objects should be in a separate confidential addendum, and not be made available for public disclosure.
 - The final written report should be submitted within 3 months after work has been completed to the appropriate regional archaeological Information Center.
- √ Contact the Native American Heritage Commission (NAHC) for:
- * A Sacred Lands File (SLF) search of the project area and information on tribal contacts in the project vicinity who may have information on cultural resources in or near the APE. Please provide us site identification as follows: USGS 7.5-minute quadrangle citation with name, township, range and section. This will assist us with the SLF.
 - Also, we recommend that you contact the Native American contacts on the attached list to get their input on the effect of potential project (e.g. APE) impact. In many cases a culturally-affiliated Native American tribe or person will be the only source of information about the existence of a cultural resource.
- √ Lack of surface evidence of archeological resources does not preclude their subsurface existence.
- Lead agencies should include in their mitigation plan provisions for the identification and evaluation of accidentally discovered archeological resources, per California Environmental Quality Act (CEQA) §15064.5 (f) of the California Code of Regulations (CEQA Guidelines). In areas of identified archaeological sensitivity, a certified archaeologist and a culturally affiliated Native American, with knowledge in cultural resources, should monitor all ground-disturbing activities.
 - Lead agencies should include in their mitigation plan provisions for the disposition of recovered artifacts, in consultation with culturally affiliated Native Americans.

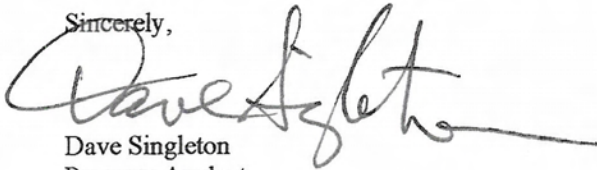
√ Lead agencies should include provisions for discovery of Native American human remains or unmarked cemeteries in their mitigations plans.

- CEQA Guidelines §15064.5(d) requires the lead agency to work with the Native Americans identified by this Commission if the Initial Study identifies the presence or likely presence of Native American human remains within the APE. CEQA Guidelines provide for agreements with Native American groups, identified by the NAHE, to ensure the appropriate and dignified treatment of Native American human remains and any associated grave goods.
- Health and Safety Code §7050.5, Public Resources Code §5097.98 and CEQA Guidelines §15064.5(d) mandate procedures to be followed in the event of an accidental discovery of any human remains in a location other than a dedicated cemetery.

√ Lead agencies should consider avoidance, as defined in CEQA Guidelines §15370 when significant cultural resources are discovered during the course of project planning or execution.

Please feel free to contact me at (916) 653-6251 if you have any questions.

Sincerely,

A handwritten signature in black ink, appearing to read "Dave Singleton", with a long horizontal flourish extending to the right.

Dave Singleton
Program Analyst

Attachment: Native American Contact List.

Cc: State Clearinghouse

**Native American Contacts
Riverside County
April 17, 2008**

Cabazon Band of Mission Indians
John A. James, Chairperson
84-245 Indio Springs Parkway Cahuilla
Indio , CA 92203-3499
(760) 342-2593
(760) 347-7880 Fax

Torres-Martinez Desert Cahuilla Indians
Raymond Torres, Chairperson
PO Box 1160 Cahuilla
Thermal , CA 92274
(760) 397-0300
(760) 397-8146 Fax

Cahuilla Band of Indians
Anthony Madrigal, Jr., Chairperson
P.O. Box 391760 Cahuilla
Anza , CA 92539
tribalcouncil@cahuilla.net
(951) 763-2631

(951) 763-2632 Fax

Twenty-Nine Palms Band of Mission Indians
Mike Darrell, Chairperson
46-200 Harrison Place Chemehuevi
Coachella , CA 92236
tribal-epa@worldnet.att.net
(760) 775-5566
(760) 775-4639 Fax

Los Coyotes Band of Mission Indians
Katherine Saubel, Spokesperson
P.O. Box 189 Cahuilla
Warner , CA 92086
loscoyotes@earthlink.net
(760) 782-0711
(760) 782-2701 - FAX

Joseph R. Benitez (Mike)
P.O. Box 1829 Chemehuevi
Indio , CA 92201
(760) 347-0488

Ramona Band of Cahuilla Mission Indians
Joseph Hamilton, vice chairman
P.O. Box 391670 Cahuilla
Anza , CA 92539
admin@ramonatribe.com
(951) 763-4105
(951) 763-4325 Fax

Colorado River Reservation
Michael Tsosie, Cultural Contact
Route 1, Box 23-B Mojave
Parker , AZ 85344 Chemehuevi
symi@rraz.net
(928) 669-9211
(928) 669-5675 Fax

This list is current only as of the date of this document.

Distribution of this list does not relieve any person of statutory responsibility as defined in Section 7050.5 of the Health and Safety Code, Section 5097.94 of the Public Resources Code and Section 5097.98 of the Public Resources Code.

This list is only applicable for contacting local Native American with regard to cultural resources for the proposed, SCH#2008041087; CEQA Notice of Preparation (NOP); draft Environmental Impact Report (DEIR) for the Southern California Edison Devers to Mirage 115kV Subtransmission System Split Project; located in Riverside County, California.

**Native American Contacts
Riverside County
April 17, 2008**

Augustine Band of Cahuilla Mission Indians
Mary Ann Green, Chairperson
P.O. Box 846 Cahuilla
Coachella, CA 92236
(760) 369-7171
760-369-7161

Cabazon Band of Mission Indians
Judy Stapp, Director of Cultural Affairs
84-245 Indio Springs Parkway Cahuilla
Indio, CA 92203-3499
lweaver@cabazonindians.org
(760) 342-2593
(760) 347-7880 Fax

Morongo Band of Mission Indians
Michael Contreras, Cultural Resources-Project
49750 Seminole Drive Cahuilla
Cabazon, CA 92230 Serrano
(951) 755-5206

(951) 922-8146 Fax

Agua Caliente Band of Cahuilla Indians THPO
Richard Begay, Tribal Historic Preservation Officer
5401 Dinah Shore Drive Cahuilla
Palm Springs, CA 92264
rbegay@aguacaliente.net
(760) 325-3400 Ext 6906
(760) 699-6906
(760) 699-6925- Fax

Torres-Martinez Desert Cahuilla Indians
William Contreras, Cultural Resources Coordinator
P.O. Box 1160 Cahuilla
Thermal, CA 92274
cultural_monitor@yahoo.com
(760) 397-0300
(760) 275-2686-CELL
(760) 397-8146 Fax

Cahuilla Band of Indians
Maurice Chacon, Cultural Resources
P.O. Box 391760 Cahuilla
Anza, CA 92539
cbandodian@aol.com
(951) 763-2631

(951) 763-2632 Fax

Torres-Martinez Desert Cahuilla Indians
Alberto Ramierz, Environmental Coordinator
P.O. Box 1160 Cahuilla
Thermal, CA 92274
albertor@torresmartinez.org
(760) 397-0300
(760) 397-8146 Fax

This list is current only as of the date of this document.

Distribution of this list does not relieve any person of statutory responsibility as defined in Section 7050.5 of the Health and Safety Code, Section 5097.94 of the Public Resources Code and Section 5097.98 of the Public Resources Code.

This list is only applicable for contacting local Native American with regard to cultural resources for the proposed, SCH#2008041087; CEQA Notice of Preparation (NOP); draft Environmental Impact Report (DEIR) for the Southern California Edison Devers to Mirage 115kV Subtransmission System Split Project; located in Riverside County, California.



South Coast Air Quality Management District

21865 Copley Drive, Diamond Bar, CA 91765-4178
(909) 396-2000 • www.aqmd.gov

April 22, 2008

Mr. Eric Chiang
Devers-Mirage 115kV Subtransmission System Split Project
c/o Environmental Science Associates
1425 N. McDowell Boulevard, Suite 105
Petaluma, CA 94954

Dear Mr. Chiang:

Notice of Preparation of a Draft Environmental Impact Report (Draft EIR) for the Southern California Edison's Devers-Mirage 115kV Subtransmission System Split Project

The South Coast Air Quality Management District (SCAQMD) appreciates the opportunity to comment on the above-mentioned document. The SCAQMD's comments are recommendations regarding the analysis of potential air quality impacts from the proposed project that should be included in the draft environmental impact report (EIR). Please send the SCAQMD a copy of the Draft EIR upon its completion. **In addition, please send with the draft EIR all appendices or technical documents related to the air quality analysis and electronic versions of all air quality modeling and health risk assessment files. Without all files and supporting air quality documentation, the SCAQMD will be unable to complete its review of the air quality analysis in a timely manner. Any delays in providing all supporting air quality documentation will require additional time for review beyond the end of the comment period.**

Air Quality Analysis

The SCAQMD adopted its California Environmental Quality Act (CEQA) Air Quality Handbook in 1993 to assist other public agencies with the preparation of air quality analyses. The SCAQMD recommends that the Lead Agency use this Handbook as guidance when preparing its air quality analysis. Copies of the Handbook are available from the SCAQMD's Subscription Services Department by calling (909) 396-3720. Alternatively, the lead agency may wish to consider using the California Air Resources Board (CARB) approved URBEMIS 2007 Model. This model is available on the SCAQMD Website at: www.urbemis.com.

The Lead Agency should identify any potential adverse air quality impacts that could occur from all phases of the project and all air pollutant sources related to the project. Air quality impacts from both construction (including demolition, if any) and operations should be calculated. Construction-related air quality impacts typically include, but are not limited to, emissions from the use of heavy-duty equipment from grading, earth-loading/unloading, paving, architectural coatings, off-road mobile sources (e.g., heavy-duty construction equipment) and on-road mobile sources (e.g., construction worker vehicle trips, material transport trips). Operation-related air quality impacts may include, but are not limited to, emissions from stationary sources (e.g., boilers), area sources (e.g., solvents and coatings), and vehicular trips (e.g., on- and off-road tailpipe emissions and entrained dust). Air quality impacts from indirect sources, that is, sources that generate or attract vehicular trips should be included in the analysis.

The SCAQMD has developed a methodology for calculating PM_{2.5} emissions from construction and operational activities and processes. In connection with developing PM_{2.5} calculation methodologies, the SCAQMD has also developed both regional and localized significance thresholds. The SCAQMD requests that the lead agency quantify PM_{2.5} emissions and compare the results to the recommended PM_{2.5} significance thresholds. Guidance for calculating PM_{2.5} emissions and PM_{2.5} significance thresholds can be found at the following internet address: http://www.aqmd.gov/ceqa/handbook/PM2_5/PM2_5.html.

In addition to analyzing regional air quality impacts the SCAQMD recommends calculating localized air quality impacts and comparing the results to localized significance thresholds (LSTs). LST's can be used in addition to the recommended regional significance thresholds as a second indication of air quality impacts when preparing a CEQA document. Therefore, when preparing the air quality analysis for the proposed project, it is recommended that the lead agency perform a localized significance analysis by either using the LSTs developed by the SCAQMD or performing dispersion modeling as necessary. Guidance for performing a localized air quality analysis can be found at <http://www.aqmd.gov/ceqa/handbook/LST/LST.html>.

It is recommended that lead agencies for projects generating or attracting vehicular trips, especially heavy-duty diesel-fueled vehicles, perform a mobile source health risk assessment. Guidance for performing a mobile source health risk assessment ("Health Risk Assessment Guidance for Analyzing Cancer Risk from Mobile Source Diesel Idling Emissions for CEQA Air Quality Analysis") can be found on the SCAQMD's CEQA web pages at the following internet address: http://www.aqmd.gov/ceqa/handbook/mobile_toxic/mobile_toxic.html. An analysis of all toxic air contaminant impacts due to the decommissioning or use of equipment potentially generating such air pollutants should also be included.

Mitigation Measures

In the event that the project generates significant adverse air quality impacts, CEQA requires that all feasible mitigation measures that go beyond what is required by law be utilized during project construction and operation to minimize or eliminate significant adverse air quality impacts. To assist the Lead Agency with identifying possible mitigation measures for the project, please refer to Chapter 11 of the SCAQMD CEQA Air Quality Handbook for sample air quality mitigation measures. Additional mitigation measures can be found on the SCAQMD's CEQA web pages at the following internet address: www.aqmd.gov/ceqa/handbook/mitigation/MM_intro.html Additionally, SCAQMD's Rule 403 – Fugitive Dust, and the Implementation Handbook contain numerous measures for controlling construction-related emissions that should be considered for use as CEQA mitigation if not otherwise required. Other measures to reduce air quality impacts from land use projects can be found in the SCAQMD's Guidance Document for Addressing Air Quality Issues in General Plans and Local Planning. This document can be found at the following internet address: <http://www.aqmd.gov/prdas/aqguide/aqguide.html>. In addition, guidance on siting incompatible land uses can be found in the California Air Resources Board's Air Quality and Land Use Handbook: A Community Perspective, which can be found at the following internet address: <http://www.arb.ca.gov/ch/handbook.pdf>. Pursuant to state CEQA Guidelines §15126.4 (a)(1)(D), any impacts resulting from mitigation measures must also be discussed.

Data Sources

SCAQMD rules and relevant air quality reports and data are available by calling the SCAQMD's Public Information Center at (909) 396-2039. Much of the information available through the Public Information Center is also available via the SCAQMD's World Wide Web Homepage (<http://www.aqmd.gov>).

The SCAQMD is willing to work with the Lead Agency to ensure that project-related emissions are accurately identified, categorized, and evaluated. Please call Gordon Mize, Ph.D., Air Quality Specialist, CEQA Section, at (909) 396-3302 if you have any questions regarding this letter.

Sincerely,



Steve Smith, Ph.D.
Program Supervisor, CEQA Section
Planning, Rule Development and Area Sources

SS:CB:AK
RVC080417-03AK
Control Number

DEPARTMENT OF TRANSPORTATION

DIVISION OF AERONAUTICS – M.S.#40
1120 N STREET
P. O. BOX 942873
SACRAMENTO, CA 94273-0001
PHONE (916) 654-4959
FAX (916) 653-9531
TTY 711



*Flex your power!
Be energy efficient!*

Mr. Eric Chiang
California Public Utilities Commission
505 Van Ness Avenue
San Francisco, CA 94102-3298

April 23, 2008

Dear Mr. Chiang:

Notice of Preparation of a Draft Environmental Impact Report for the Southern California Edison Devers-Mirage 115 kV Subtransmission System Split Project; SCH# 2008041087

The California Department of Transportation (Caltrans), Division of Aeronautics (Division), reviewed the above-referenced document with respect to airport-related noise and safety impacts and regional aviation land use planning issues pursuant to the California Environmental Quality Act (CEQA). The Division has technical expertise in the areas of airport operations safety, noise and airport land use compatibility. We are a funding agency for airport projects, and we have permit authority for public-use and special-use airports and heliports.

The proposal is for the Southern California Edison Devers-Mirage 115 kV Subtransmission System Split Project. A portion of the project site is located in the vicinity of Palm Springs International Airport.

California Public Utilities Code Section 21658 prohibits structural hazards associated with utility poles and lines near airports. Should any of the transmission lines be in the vicinity of Palm Springs International Airport or exceed 200 feet in height, a Notice of Proposed Construction or Alteration (Form 7460-1) will be required by the Federal Aviation Administration (FAA) in accordance with Federal Aviation Regulation, Part 77 "Objects Affecting Navigable Airspace." Form 7460-1 is available on-line at <https://oeaaa.faa.gov/oeaaa/external/portal.jsp> and should be submitted electronically to the FAA.

These comments reflect the areas of concern to the Division with respect to airport-related noise and safety impacts and regional airport land use planning issues. We advise you to contact our Caltrans District 8 office concerning surface transportation issues.

Thank you for the opportunity to review and comment on this proposal. If you have any questions, please call me at (916) 654-5314.

Sincerely,

A handwritten signature in cursive script that reads "Sandy Hesnard".

SANDY HESNARD
Aviation Environmental Specialist

c: State Clearinghouse, Palm Springs Int'l Airport, Riverside County ALUC

Matthew Fagundes

From: Van Dorpe, David M SPL [David.M.VanDorpe@usace.army.mil]
Sent: Tuesday, May 06, 2008 3:15 PM
To: Matthew Fagundes
Cc: Mallette, Frank B SPL; Miya, Baron; Lovan, Hayley J SPL; Georgia Celehar
Subject: Whitewater River Basin Project and SCE Notice of EIR public meeting - Devers-Mirage 115kV Subtransmission System Split Project

Mr. Matt Fagundes;

Good talking with you on the phone earlier. Our project is called the Whitewater River Basin (Thousand Palms) flood control project. It consists of four levees that run northeast to southwest, diverting flooding from the Indio Hills away from the Thousand Palms area and to the southwest.

Right now, I do not believe we have any right-of-way conflicts with the Devers-Mirage project. We may however, impact some parcels. Our consultant, PB World, had preliminary discussions with Mr. Pascual Garcia, ROW Transmission Specialist, SCE Rialto Office regarding our levee alignments. We have since made some changes to those alignments which we would like to coordinate with the design team for the Devers-Mirage project. Please provide a POC whom we can share design information.

I have also copied this email to our consultant, Mr. Baron Miya, PB World, our lead engineer Mr. Frank Mallette, our Environmental Coordinator Ms. Hayley Lovan and our Sponsor, Ms. Georgia Celehar with Coachella Valley Water District. Either CVWD or we will send a letter in response to the Notice.

Sincerely,

David M. Van Dorpe, P.E., PMP
Project Manager
US Army Corps of Engineers
david.m.vandorpe@usace.army.mil
(213) 452-3998
(213) 280-8572 (m)



Established in 1918 as a public agency
Coachella Valley Water District



Directors:
Peter Nelson, President
Patricia A. Larson, Vice President
Tellis Codekas
John W. McFadden
Russell Kitahara

Officers:
Steven B. Robbins, General Manager-Chief Engineer
Julia Hernandez, Secretary
Mark Beuhler, Asst. General Manager
Dan Parks, Asst. To General Manager
Redwine and Sherrill, Attorneys

May 8, 2008

File: 0022.75
1142.03

Eric Chiang
Environmental Science Associates
1425 N. McDowell Boulevard, Suite 105
Petaluma, CA 94954

Dear Mr. Chiang:

Subject: Devers-Mirage 115kV Subtransmission System Split Project

Thank you for affording the Coachella Valley Water District (CVWD) the opportunity to review the Notice of Preparation (NOP) of an Environmental Impact Report (EIR) for Southern California Edison Company's (SCE) Devers-Mirage Subtransmission System Split Project located in the Coachella Valley. CVWD provides domestic water, wastewater, recycled water, irrigation/drainage, regional stormwater protection and groundwater management services to a population of 265,000 throughout the Coachella Valley in Southern California.

After reviewing the NOP, we submit the following comments:

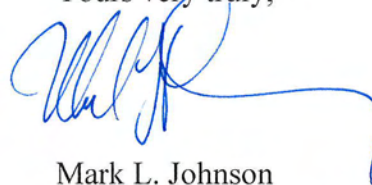
1. The project lies within and outside the area of the Whitewater River Basin Thousand Palms Flood Control Project, which will provide regional flood control to a portion of the Thousand Palms area. CVWD is currently in the design phase of this flood control project. Upon completion of the design phase, developers and property owners within the area may be required to dedicate right-of-way for regional flood control facilities and/or participate in the financing of a portion of these facilities. Until construction of the flood control project is complete, the developer shall comply with Riverside County Ordinance 458.12.
2. The proposed project area is shown to be subject to shallow flooding and is designated Zone AO, with depths of one to three feet on the Federal Flood Insurance Rate maps.
3. Prior to approval of the proposed Subtransmission System project, the developer shall comply with Riverside County Ordinance 458.12 as amended in the preparation of on-site flood protection facilities for this project. The developer will be required to pay fees and submit plans to CVWD as part of the flood management review. Flood protection measures shall include establishing a finished floor/slab elevation at or above the flood depth, constructing erosion protection for the foundation of the structures and allowing reasonable conveyance of off-site flow through the property.

May 8, 2008

4. Construction of block walls may be in violation of Ordinance 458.12. When CVWD reviews a project for compliance with Ordinance 458.12, block walls are reviewed carefully and seldom found to be compatible with the goals of Ordinance 458.12. Block walls can cause diversion and concentration of storm flows onto adjacent properties and thus be in violation of Ordinance No. 458.12 and California drainage law.
5. Walls must be constructed in a manner that does not increase the risk of off-site storm water flows on to adjacent properties. This can be accomplished by constructing open sections in the wall to accommodate flow-through. To achieve this, CVWD requires that at least 50 percent of the total lineal footage of the wall be constructed of wrought iron fencing or similar material that will provide for storm water flow-through. Construction materials used within the open sections must extend the entire vertical wall height so not to obstruct flow at the finish grade/surface.

If you have any questions, please contact Luke Stowe, Senior Environmental Specialist, at extension 2545.

Yours very truly,



Mark L. Johnson
Director of Engineering

L.S:\md\eng\env\08\may\chiang-ltr

From: Juan Perez [mailto:jcperez@rctima.org]
Sent: Monday, May 12, 2008 10:52 AM
To: Matthew Fagundes; Mojahed Salama
Cc: Eric Chiang; Douglas Cover; Damian Meins; Kathleen Browne; Ron Goldman
Subject: Re: Devers-Mirage EIR

Thanks Mojahed.

Matt, I do want to clarify that these comments are only from the County of Riverside Transportation Department, and as you can see they are more operational in nature with regards to County roads. I assume that you are also contacting the County Planning Department, which is tasked with coordinating overall County comments from other affected County Departments and the Board of Supervisors? Kathleen Browne is the contact in Planning, I do want to emphasize that you make contact with her please as well.

Thanks.

>>> Mojahed Salama 5/12/2008 9:53 AM >>>
Matt,

Based on our phone conversation this morning, the following are my comments:

- 1) You will need an encroachment permit any time you work or cross a County road.
- 2) I prefer that you underground your lines when and if possible.
- 3) You will need to coordinate with IID (Imperial Irrigation District) and the County including the Economic Development Agency (EDA) on how your project will impact the EDA project on Monterey and Varner since this project includes relocation of IID poles. The EDA project is currently under construction and includes improving both Varner (Monterey to few hundred feet east of Ramon) and Monterey (Varner to Ramon) to ultimate improvement, which includes widening, Curb & Gutter and Sidewalks.
- 4) The County has the north west corner of the intersection of Dinah Shore and Bob Hope. The remaining 3 quarters are within the City of Rancho Mirage.

I hope this helps. Give me a call if you have further questions.

Mojahed Salama
Eng. Division Manager
Riverside County Transportation Department
Desert Office
760-863-8267 (office)
760-863-7040 (Fax)

-----Original Message-----

From: Mojahed Salama [mailto:msalama@rctlma.org]
Sent: Monday, May 12, 2008 9:54 AM
To: Matthew Fagundes; Juan Perez
Cc: Eric Chiang; Douglas Cover
Subject: Re: Devers-Mirage EIR

Matt,

Based on our phone conversation this morning, the following are my comments:

- 1) You will need an encroachment permit any time you work or cross a County road.
- 2) I prefer that you underground your lines when and if possible.
- 3) You will need to coordinate with IID (Imperial Irrigation District) and the County including the Economic Development Agency (EDA) on how your project will impact the EDA project on Monterey and Varner since this project includes relocation of IID poles. The EDA project is currently under construction and includes improving both Varner (Monterey to few hundred feet east of Ramon) and Monterey (Varner to Ramon) to ultimate improvement, which includes widening, Curb & Gutter and Sidewalks.
- 4) The County has the north west corner of the intersection of Dinah Shore and Bob Hope. The remaining 3 quarters are within the City of Rancho Mirage.

I hope this helps. Give me a call if you have further questions.

Mojahed Salama
Eng. Division Manager
Riverside County Transportation Department
Desert Office
760-863-8267 (office)
760-863-7040 (Fax)

Matthew Fagundes

From: tchighland@aol.com
Sent: Wednesday, May 14, 2008 4:14 PM
To: Devers Mirage
Cc: mejahed@aol.com
Subject: SCE Devers-Mirage Project

To: Mr. Eric Chiang
Re: SCE Devers-Mirage Project

Dear Sir:

I own a home at 641 Dunes Court, Palm Springs. I am adjacent to the Thornhill Substation in the City of Palm Springs.

#1 Will there be "new support structures" and buildings constructed in the Thornhill Substation?

#2 Will these structures be taller than 15 ft?

#3 Will additional traffic (trucks, workers) be using the Thornhill Substation on a regular basis after the project is completed?

#4 Currently there are SCE workers and other subcontractors who use the Thornhill Substation. NOISE from their vehicles (radios playing, motors running) are a constant irritant to the residents adjacent to the sub station.

#5 Additional buildings and worker-visits will cause even more NOISE and eyesore in a residential neighborhood.

These are my concerns.

Sincerely,
Thomas C. MacMaster
641 Dunes Court
Palm Springs, CA 92264
email- tchighland@aol.com
cell phone- 760 808 2456

Plan your next roadtrip with MapQuest.com: America's #1 Mapping Site.