

CPUC Public Meeting Draft Environmental Impact Report Estrella Substation and Paso Robles Area Reinforcement Project

Proposed Jointly by Horizon West Transmission, LLC, and
Pacific Gas and Electric Company
Application No. 17-01-023

December 15, 2020

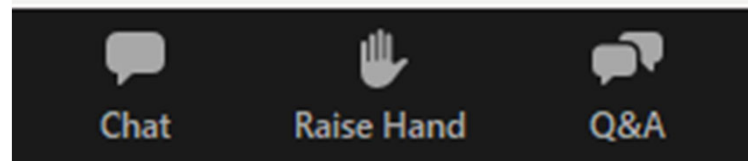


California Public
Utilities Commission

Overview of Zoom Features

Zoom features are located along the black tool bar at the bottom of your screen:

- **Chat** – This feature is disabled.
- **Raise Hand** – Click this to indicate that you would like to speak at the end of the presentation.
- **Q&A** – Click this to ask a question to the panelists. Time permitting, the host will read the question aloud at the end of the presentation and provide a response.

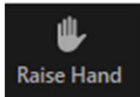


Meeting Agenda

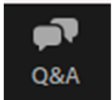
- Meeting Format
- Meeting Purpose and Goals
- Roles
- CPUC Process
- Overview of California Environmental Quality Act (CEQA)
- Overview of Proposed Project
- Alternatives and Environmental Analysis
- How to Submit Comments on the Draft EIR

Meeting Format

- **This Zoom call is being recorded**
- Presentation slides are available on the project website
- Presenters: Rob Peterson (CPUC), Tom Engels (Horizon Water and Environment – not affiliated with Horizon West Transmission)
- Attendees are muted during the presentation



- If an attendee would like to speak at the end of the presentation, the attendee should raise its hand



- To ask a question, please use the Q&A button

- At the end of the presentation, attendees with raised hands will be called upon individually and unmuted so that they can speak for up to 2 minutes, time permitting

Purpose and Goals of Public Meeting

Purpose: Provide an overview of the Proposed Project and the Draft EIR and an opportunity for informal questions and answers.

Written comments can be submitted to estrellaproject@horizonh2o.com

Goals:

- Inform the community members about the project purpose, evaluation process, project design, and environmental impact analysis with an emphasis on the issues of concern.
- Ensure that all participants know how to submit written comments on the Draft EIR.

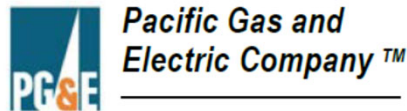
Role: Review Project



California Public Utilities
Commission (CPUC)
Lead Agency under CEQA

Horizon Water and Environment
Environmental Contractor
for CPUC

Role: Construct and Operate Project, If Approved



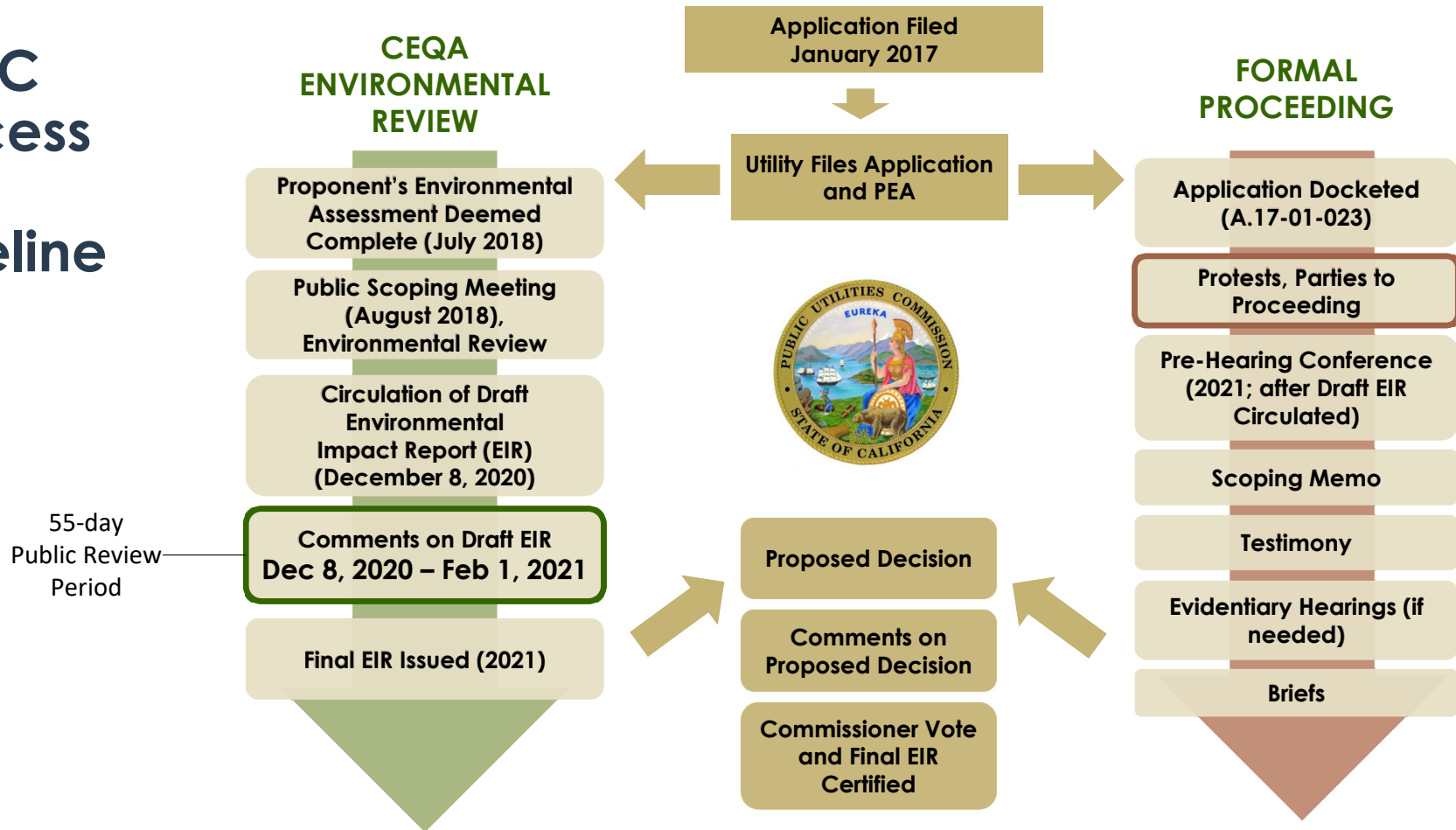
Horizon West Transmission, LLC
(HWT)
Project Co-Applicant

Pacific Gas & Electric Company
(PG&E)
Project Co-Applicant

CPUC Process

- Investor-owned utilities submit a Permit to Construct application pursuant to CPUC General Order 131-D
- HWT and PG&E filed an application for the Estrella Project consisting of:
 1. Application A.17-01-023 for a Permit to Construct
 2. Proponent's Environmental Assessment
 - Revised Proponent's Environmental Assessment
 - Deficiency and Data Responses
- CPUC review occurs under two tracks:
 1. Environmental Review (CEQA)
 2. Formal Proceeding for Application A.17-01-023
- CPUC has authority to approve or deny the application

CPUC Process and Timeline



CEQA Overview

Basic purposes of CEQA (State CEQA Guidelines, Section 15002):

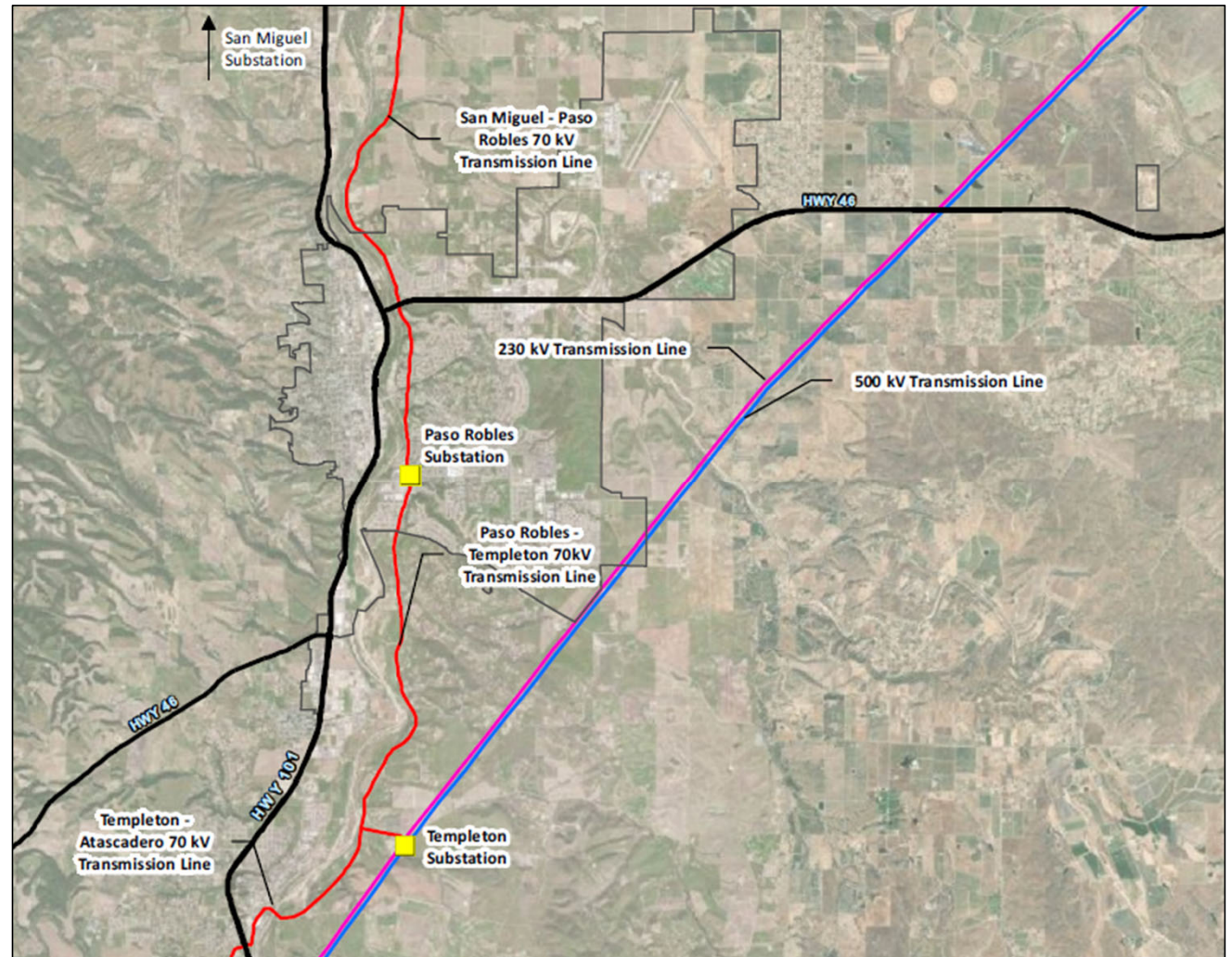
- Inform governmental decision makers and public about potential significant environmental effects of proposed activities
- Identify ways that environmental damage can be avoided or significantly reduced
- Prevent significant, avoidable damage to environment by requiring changes in projects through use of alternatives or mitigation measures when governmental agency finds project changes to be feasible
- Disclose to public the reasons why a governmental agency approved the project in the manner the agency chose if significant environmental effects are involved

Project Objectives as Described in Draft EIR

- 1. Transmission Objective:** Mitigate thermal overload and low voltage concerns in the Los Padres 70 kV system during Category B contingency scenarios, as identified by the CAISO in its 2013-2014 Transmission Plan. (We'll describe this later in the presentation)
- 2. Distribution Objective:** Accommodate expected future increased electric distribution demand in the Paso Robles Distribution Planning Area, particularly in the anticipated growth areas in northeast Paso Robles.

Existing Transmission System

- San Miguel-Paso Robles 70 kV power line does not have the capacity to accommodate the load served through Paso Robles Substation
- Thermal overloads and low voltage could occur



Sections of Draft EIR

Executive Summary

1. Introduction
2. Project Description
3. Alternatives Description
4. Environmental Impact Analysis
5. Alternatives Analysis Summary and Comparison of Alternatives
6. Other Statutory Considerations and Cumulative Impacts
7. Report Preparers
8. References

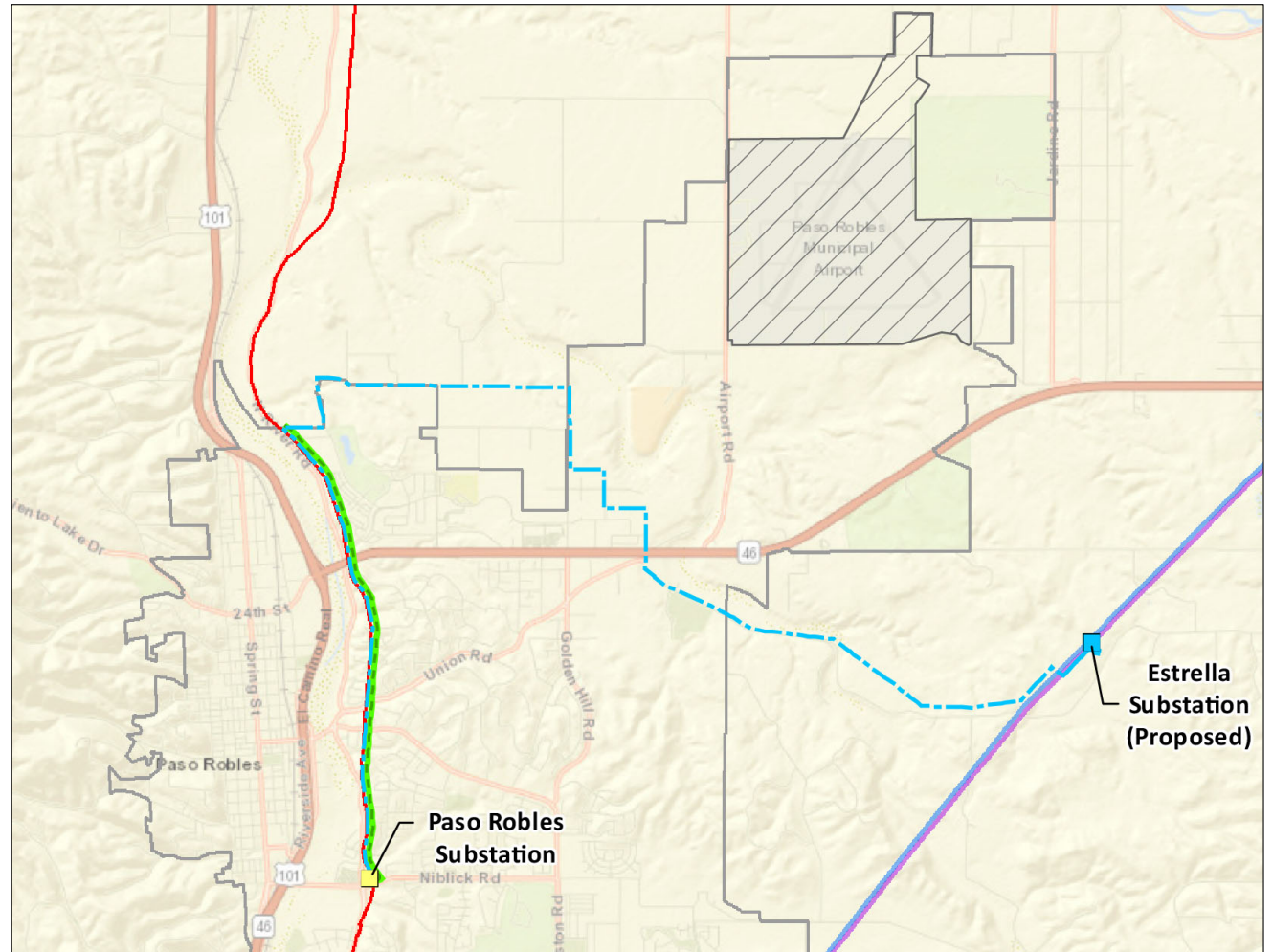
Appendices

CEQA Draft EIR Resource Areas (Chapter 4)

- 4.1 Aesthetics
- 4.2 Agriculture and Forestry Resources
- 4.3 Air Quality
- 4.4 Biological Resources
- 4.5 Cultural Resources
- 4.6 Energy
- 4.7 Geology, Soils, Paleontology
- 4.8 Greenhouse Gas Emissions
- 4.9 Hazards and Hazardous Materials
- 4.10 Hydrology and Water Quality
- 4.11 Land Use and Planning
- 4.12 Mineral Resources
- 4.13 Noise
- 4.14 Population and Housing
- 4.15 Public Services (fire, police, schools, parks)
- 4.16 Recreation
- 4.17 Transportation
- 4.18 Tribal Cultural Resources
- 4.19 Utilities and Service Systems (water, wastewater, solid waste)
- 4.20 Wildfire

Project Overview

- Substation
- +
- - - Powerline
- +
— Reconductoring



Proposed Project Components

Estrella Substation Components

- Constructing a new 230 kV / 70 kV substation on approx. 15-acre site
- Constructing a new 230 kV transmission line interconnection to existing 230 kV transmission facilities

Power Line Components

- Constructing a new approx. 7-mile-long 70 kV double circuit power line between new Estrella Substation and existing San Miguel-Paso Robles 70 kV power line
- Reconductoring / replacing approx. 3 miles of existing San Miguel-Paso Robles 70 kV power line from interconnection with new line from Estrella Substation to existing Paso Robles Substation

Reasonably Foreseeable & Future Components

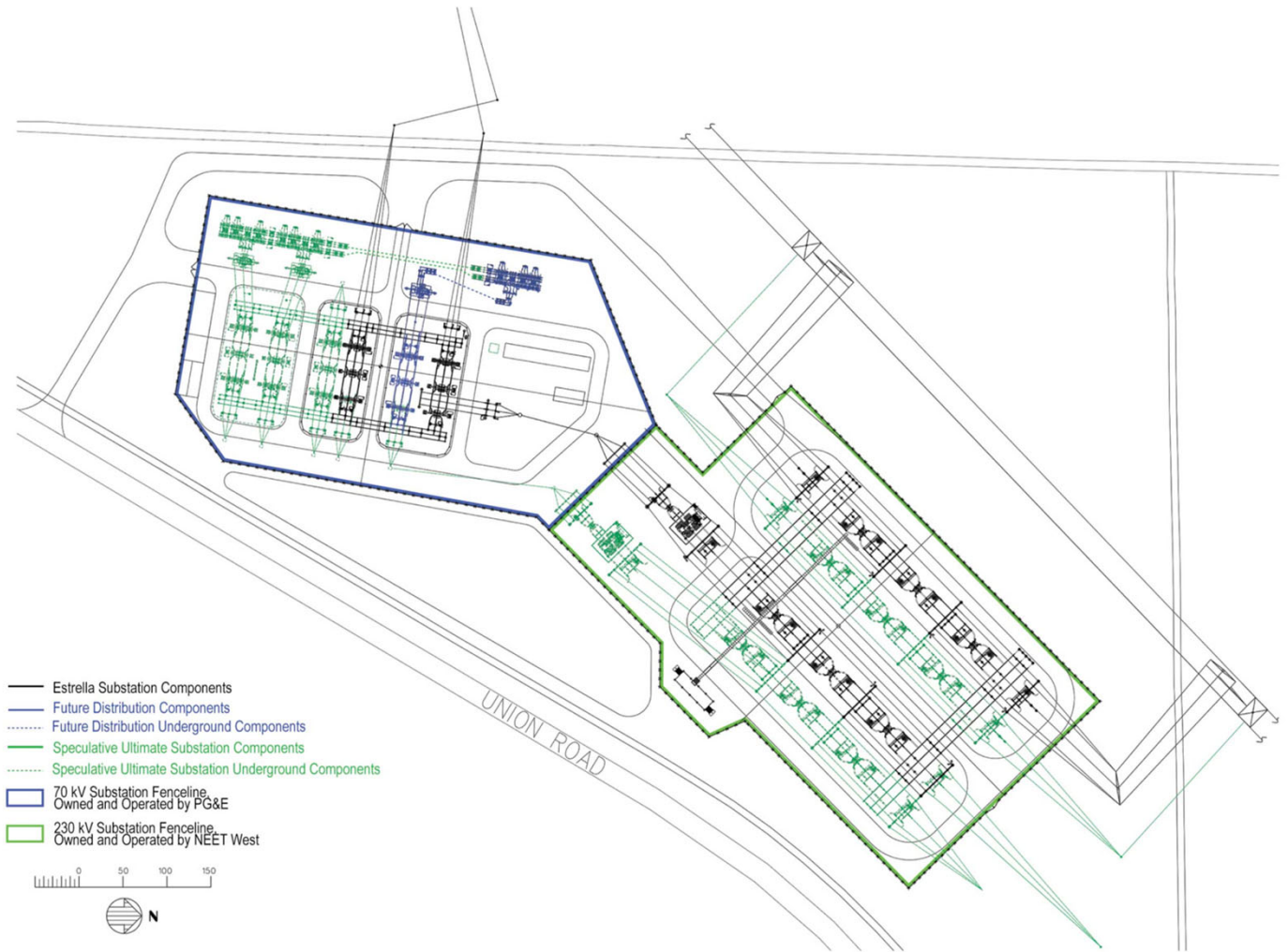
Reasonably Foreseeable Distribution Components

- Establish three new 21 kV distribution feeders from Estrella Substation, including:
 - New 70/21 kV transformer, new and reconductored distribution lines, three 21/12 kV pad-mounted transformers

Ultimate Substation Buildout

- Establish additional 70 kV lines and 21 kV distribution feeders (routes currently unknown) as needed to meet future demands, including:
 - Additional 230 kV interconnection, 230/70 kV transformer, up to three additional 70/21 kV transformers, and associated equipment

Ultimate Substation Buildout



Simulation of the Proposed Estrella Substation






Significant and Unavoidable Impacts of the Proposed Project



- Aesthetics
- Agricultural Resources
- Air Quality
- Noise

Components of the Proposed Project and Alternatives

Proposed Project

-  Estrella Substation
-  Proposed Project 70kV Route
-  70 kV Minor Route Variation 1









Reasonably Foreseeable Distribution Components

-  New Distribution Line Segments
-  Additional 21/12 kV Pad-Mounted Transformer







Existing Infrastructure

-  Existing Substations

Project Alternatives Carried Forward for Full Analysis

-  Front-of-the-Meter (FTM) Battery Storage Sites (Alternative BS-2)
-  Alternative SS-1: Bonel Ranch Substation Site
-  Alternative SE-1A: Templeton Substation Expansion - 230/70 kV Substation
-  Alternative PLR-1A: Estrella Route to Estrella Substation
-  Alternative PLR-1C: Estrella Route to Bonel Ranch, Option 1
-  Alternative PLR-1C: Minor Route Variation 1
-  Alternative PLR-1C: Minor Route Variation 2
-  Alternative PLR-3A: Strategic Undergrounding, Option 1
-  Alternative PLR-3B: Strategic Undergrounding, Option 2
-  Alternative SE-PLR-2: Templeton-Paso South River Road Route

Other Project Alternatives Considered

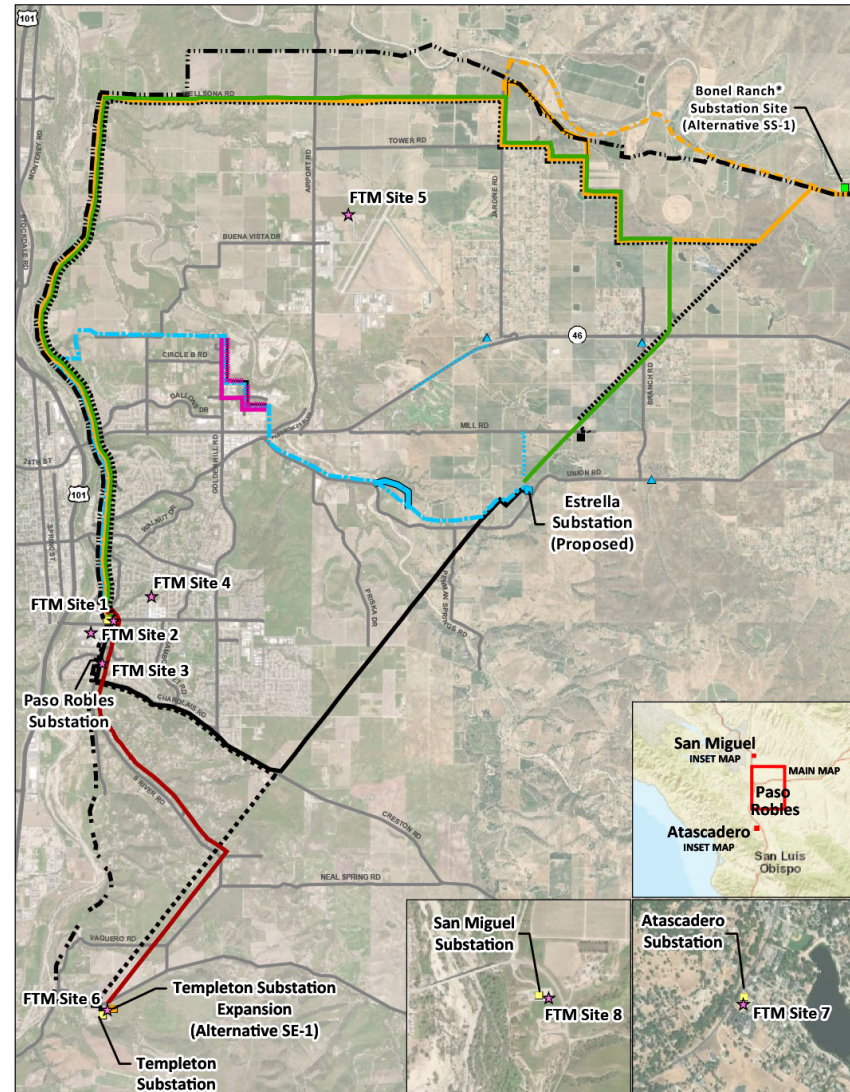
-  Alternative PLR-1D: Estrella Route to Bonel Ranch, Option #2
-  Alternative SS-2: Mill Road West Substation Site
-  Alternative PLR-1B: Estrella Route to Mill Road West
-  Alternative PLR-2: Creston Route (Variations not shown; not carried forward)
-  Alternative SE-PLR-1: Templeton-Paso 70kV Route (Existing)
-  Alternative SE-PLR-3: Templeton-Paso Creston Route

Alternatives Analysis and Comparison of Alternatives


- Alternatives analyzed individually within Chapter 4 of the DEIR
- Many alternatives address one aspect of the Proposed Project and/or Project objectives and one or more alternatives can be paired together (e.g., substation site [SS] alternative and power line route [PLR] alternative)
- Thus, alternative combinations were considered in Chapter 5 to provide a holistic comparison

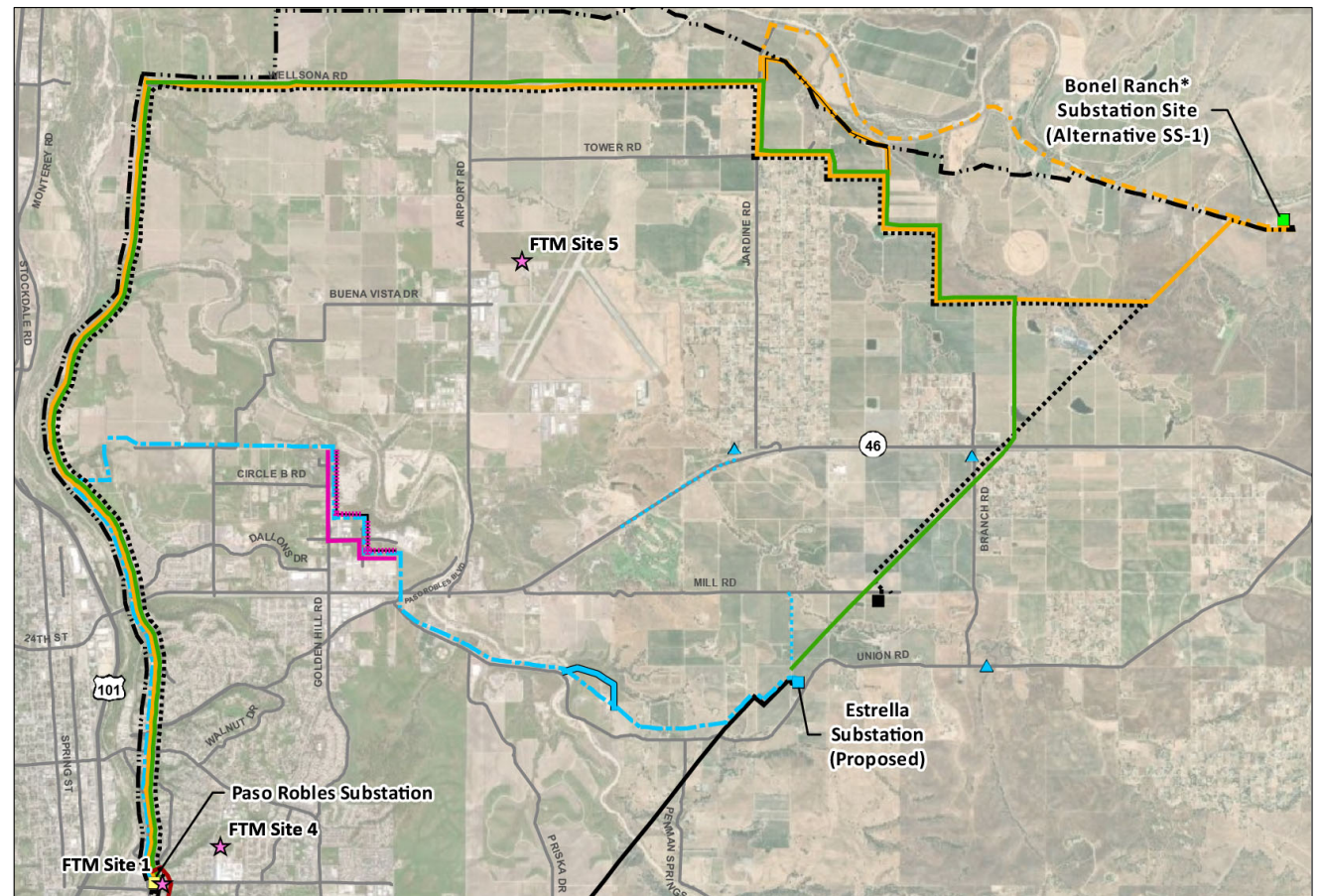
Alternative Combinations

-  Alternative Combination #1
(With Undergrounding)
-  Alternative Combination #2
(Estrella Route)
-  Alternative Combination #3
(Bonel Ranch)
-  Alternative Combination #4
(South River Road)
-  Alternative Combination #5
(With Distributed Energy Resources [DERs])



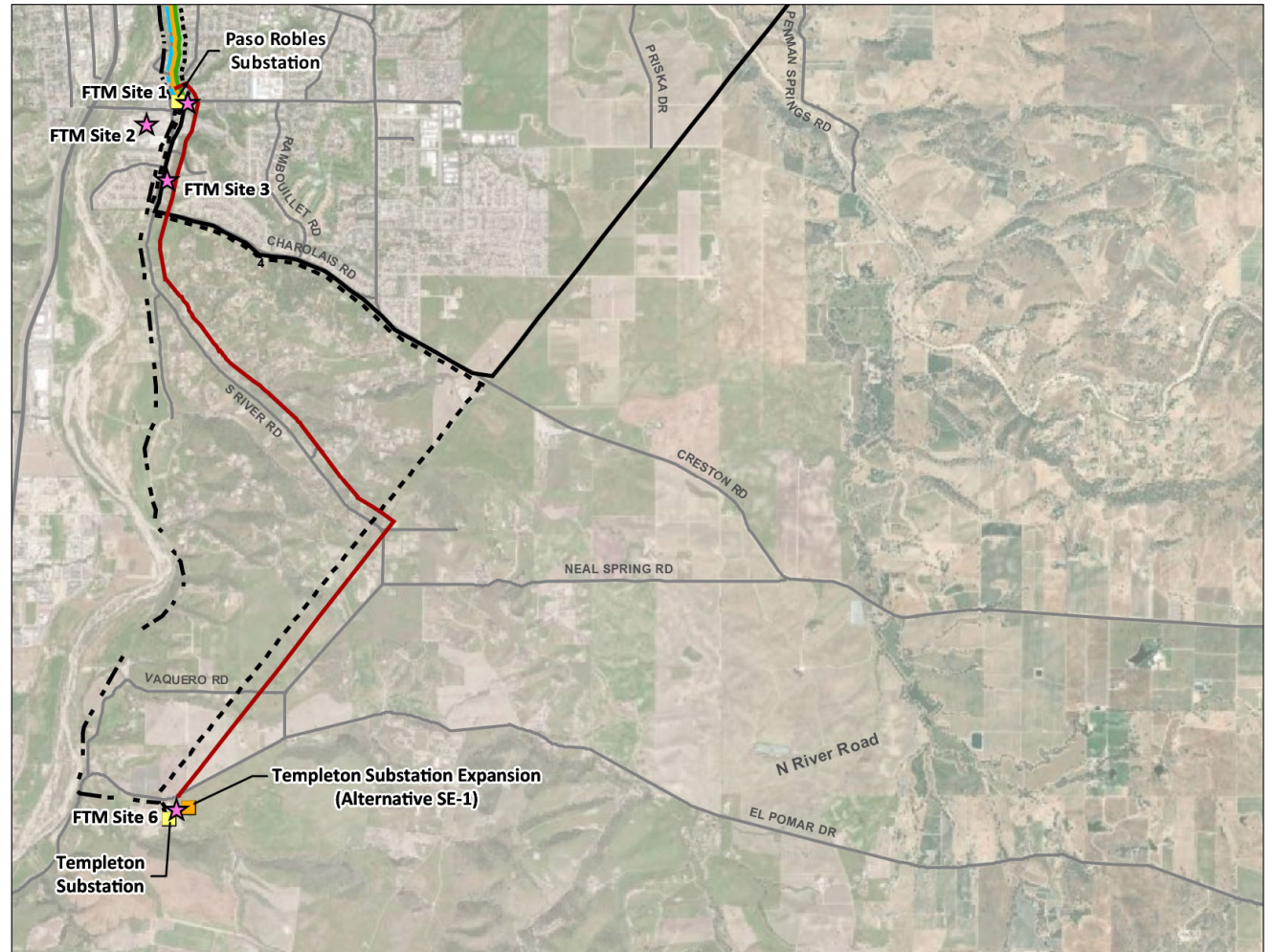
Proposed Project and Northern Alternative Combinations

-  Proposed Project
-  Alternative Combination #1 (With Undergrounding)
-  Alternative Combination #2 (Estrella Route)
-  Alternative Combination #3 (Bonel Ranch)
-  Alternative Combination #5 (With Distributed Energy Resources)



Southern Alternative Combinations

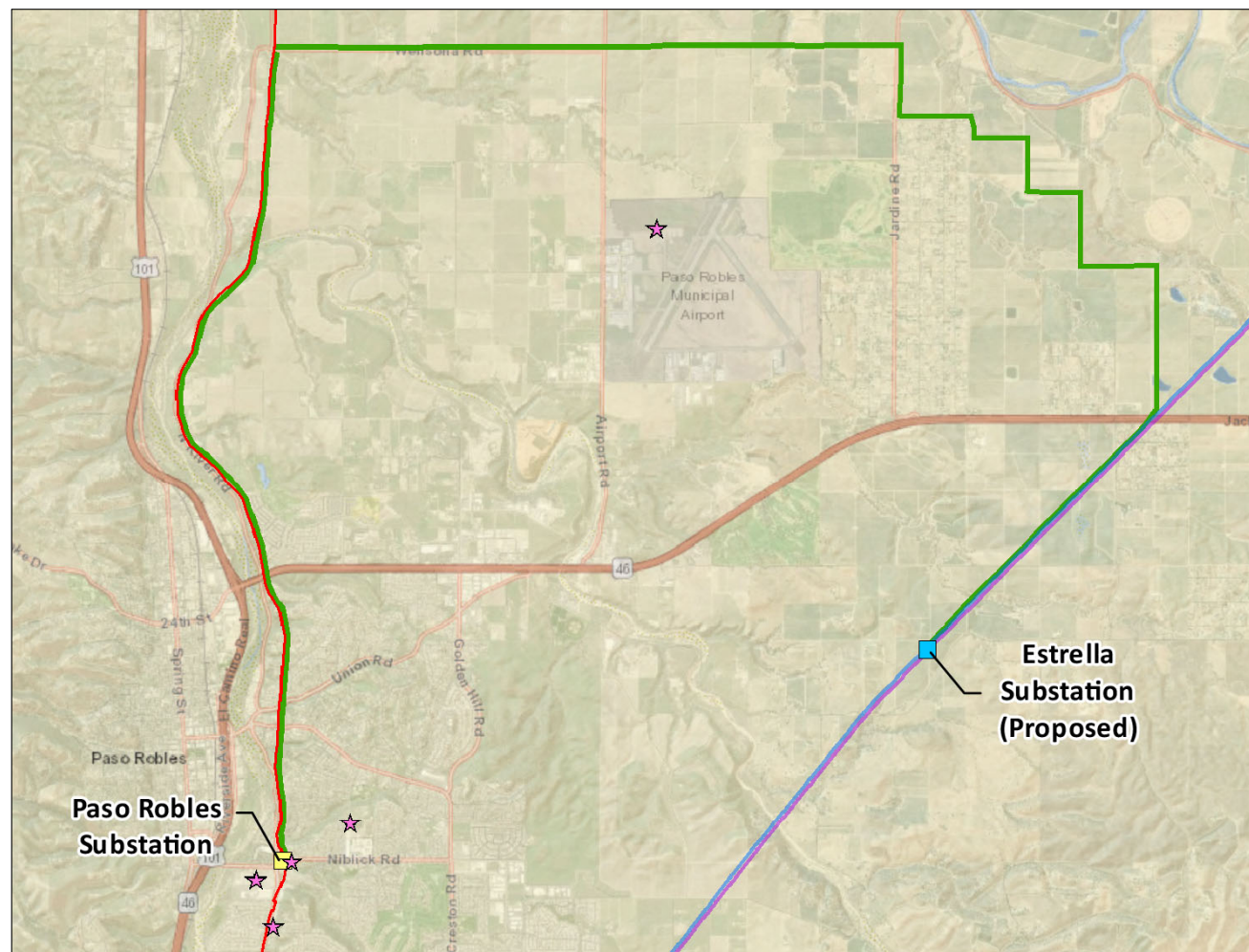
Alternative Combination #4 (South River Road)



Environmentally Superior Alternative Combination

Alternative Combination #2 (Estrella Route)

- Estrella Substation
- +
- Estrella Route
- +
- ★ Battery Storage



Ranking of Alternative Combinations

Rank	Alternative Combination No.	Title	Alternative Component(s)
1	Alternative Combination 2	Estrella Route	Estrella Substation + Estrella Route + Battery Storage
2	Alternative Combination 1	With Undergrounding	Proposed Project with Undergrounding + Battery Storage
3	Alt. Combination 5	With Distributed Energy Resources	Proposed Project + Battery Storage
4	Proposed Project		
5	Alternative Combination 3	Bonel Ranch	Bonel Ranch Substation + Estrella Route to Bonel Ranch + Battery Storage
6	Alternative Combination 4	South River Road	Templeton Substation Expansion + Templeton-Paso South River Road Route + Battery Storage

Interactive Web Map

Proposed Estrella Project and Alternatives Consideration

Map Type

Alternatives

Legend

Paso Robles

Templeton

Basemap gallery

- Imagery
- Imagery with Labels
- Streets
- Topographic
- Dark Gray Canvas
- Light Gray Canvas

POWERED BY ESRI

Final EIR

The Final EIR will include:

- Copies of all comments received on the Draft EIR
- Written responses to each comment raising significant environmental issues
- Any changes to Draft EIR based on the comments and responses

Q&A & Open Discussion

Reminder:

All participants are in listen-only mode by default.

If you would like to speak for 2 minutes, please “raise hand”. At the end of the presentation, the host will announce your name and unmute you. Please note that your video will never be activated. We will only hear your voice and see your name in the video box.

We may not be able to answer your questions during the presentation. However, we will provide written responses in the Final EIR to all comments submitted through the methods shown on the next slides.



How Can You Provide Comments?

Mail

Mr. Rob Peterson

CPUC

c/o Horizon Water and Environment

PO Box 2727, Oakland, CA 94602

or

266 Grand Ave, Ste 210

Oakland, CA 94610

Email

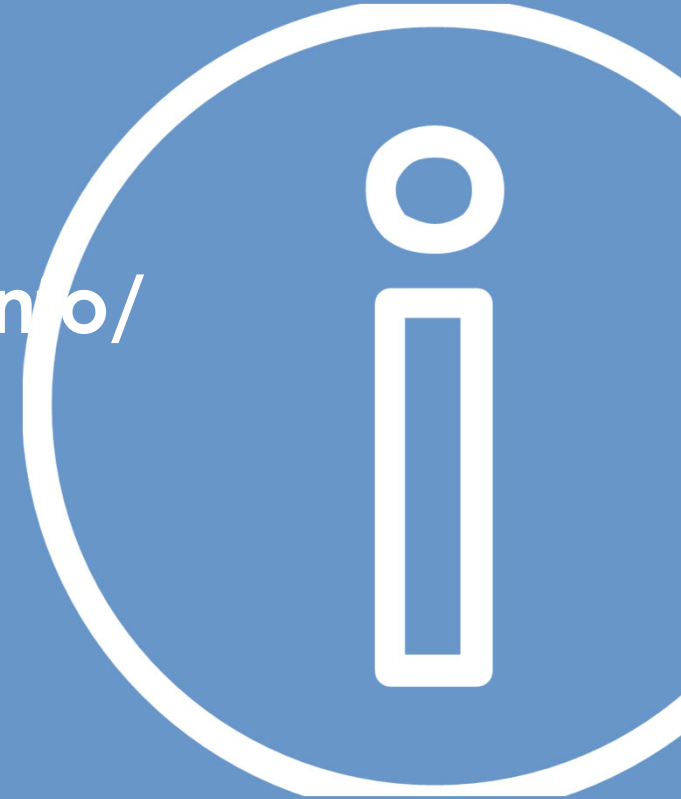
estrellaproject@horizonh2o.com

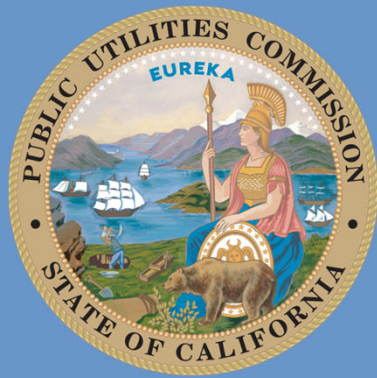
Voice Mail

(844) 211-7510

For more information:

[www.cpuc.ca.gov/environment/info/
horizonh2o/Estrella/index.html](http://www.cpuc.ca.gov/environment/info/horizonh2o/Estrella/index.html)





California Public Utilities Commission