



California Public Utilities Commission

December 8, 2020

Notice of Availability of a Draft Environmental Impact Report Regarding the Proposed Estrella Substation and Paso Robles Area Reinforcement Project

CALIFORNIA PUBLIC UTILITIES COMMISSION
505 Van Ness Avenue
San Francisco, CA 94102-3238

1. NOTICE IS HEREBY GIVEN that the California Public Utility Commission (CPUC), is the lead agency for preparation of a draft Environmental Impact Report (EIR) pursuant to the California Environmental Quality Act (CEQA) for construction and operation of the Estrella Substation and Paso Robles Area Reinforcement Project (Proposed Project). This draft EIR was prepared in compliance with the California Environmental Quality Act (CEQA) of 1970 (as amended) and the State CEQA Guidelines (California Code of Regulations [CCR] title 14, section (§) 15000 et seq.). CPUC hereby invites comments on the adequacy and completeness of the environmental analyses in the draft EIR.
2. Project Title & Number: Estrella Substation and Paso Robles Area Reinforcement Project
3. Property Owner(s): Various
4. Contact Person: Rob Peterson; estrellaproject@horizonh2o.com
5. Project Location: unincorporated portions of San Luis Obispo County and the City of Paso Robles (See attached figure)

Project APNs: Various
6. General Plan designation: Various
7. Zoning: Various



8. Brief Description of the Project: The proposed project involves the construction of a 230 kV/70 kV substation, a 230 kV transmission line interconnection, a new 70 kV double-circuit powerline between the new 70 kV substation and the existing San Miguel-Paso Robles 70 kV power line, and reconductoring of the existing San Miguel-Paso Robles 70 kV power line.
9. Project Alternatives: The draft EIR evaluates the potential environmental impacts of the Proposed Project and eight project alternatives: the No Project Alternative, Bonel Ranch Substation Site, Estrella Route to Estrella Substation, Estrella Route to Bonel Ranch, Strategic Undergrounding, Templeton Substation Expansion, Templeton-Paso Robles South River Road Route, Battery Storage to Address the Distribution Objective, and Behind-the-Meter Solar and Battery Storage
10. The project site is not located on the lists enumerated under Section 65962.5 of the Government Code, including, but not limited to lists of hazardous waste facilities.
11. Copies of the draft EIR and all documents referenced are available for review online at the CPUC's project website:
www.cpuc.ca.gov/environment/info/horizonh2o/estrella/index.html
12. Public Meetings: All interested persons are encouraged to attend one of the two public meetings on the draft EIR. The meetings will cover the same information. Due to the COVID-19 pandemic, the public meetings will be held online via Zoom at the times and URL Links below. These links also will be posted on the project website listed above. If you would like the links emailed to you, please send your request to estrellaproject@horizonh2o.com. If you need assistance, please send an email to estrellaproject@horizonh2o.com or leave a voicemail message at (844) 211-7510.

Tuesday, December 15, 2020

Meeting #1: 12:00 pm – 2:00 pm

Zoom Link: <https://zoom.us/j/93029368572>

Or Telephone:

(669) 900-9128 or (253) 215-8782

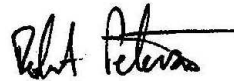
Webinar ID: 930 2936 8572



Meeting #2: 5:30 pm – 7:30 pm
Zoom Link: <https://zoom.us/j/93304123563>

Or Telephone:
(669) 900-9128 or (253) 215-8782
Webinar ID: 933 0412 3563

December 8, 2020



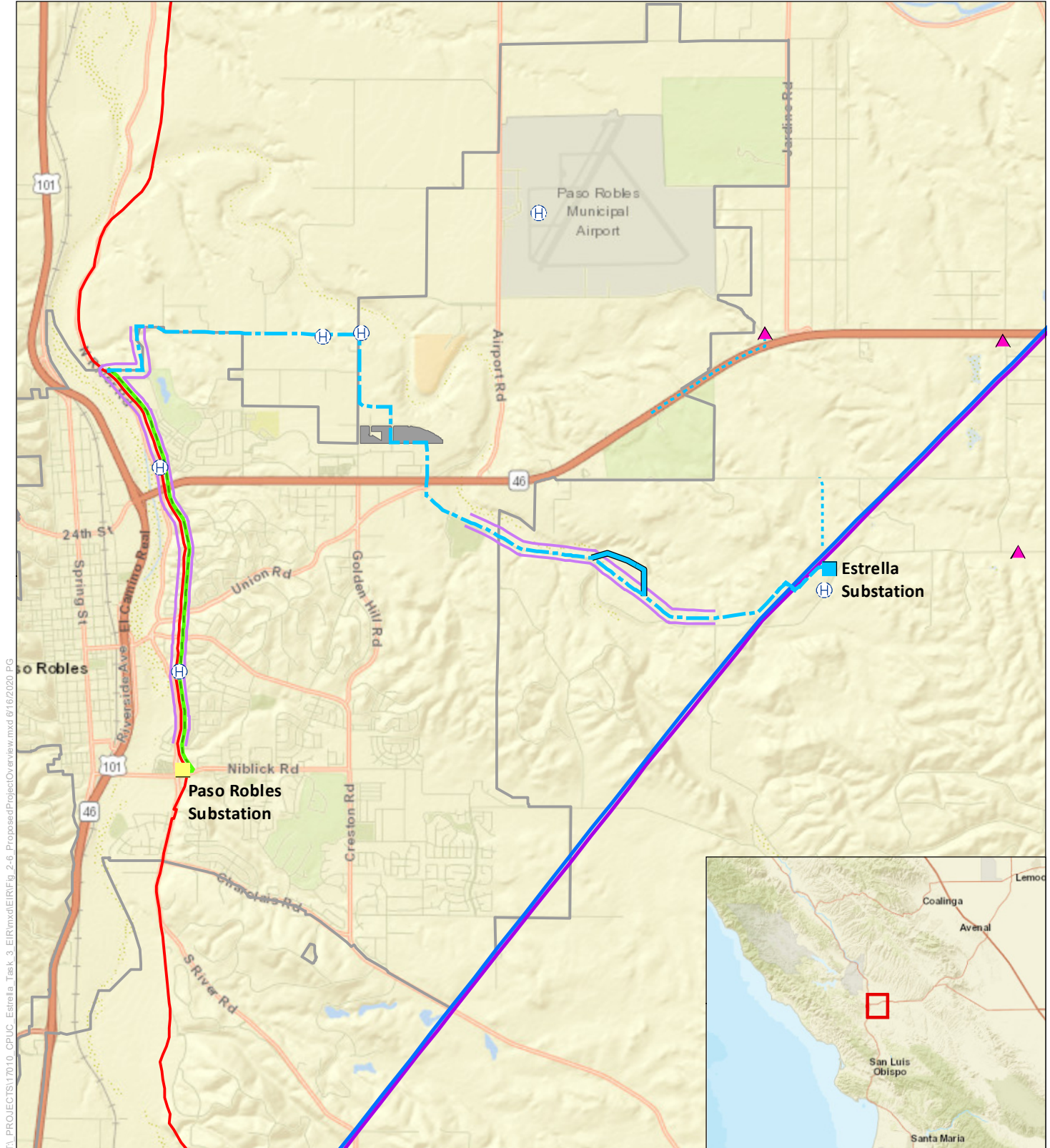
DATE OF THIS NOTICE

BY: Rob Peterson, CPUC

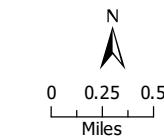
WRITTEN COMMENT PERIOD: December 8, 2020 to February 1, 2021

Please send written comments to the attention of Robert Peterson, c/o Tom Engels at Horizon Water and Environment, 266 Grand Avenue, Suite 210, Oakland, CA 94610, or via e-mail to estrellaproject@horizonh2o.com.





T:\PROJECTS\17010_CPUC_Estrella_Task_3_EIR\mxd\EIR\Fig_2-6_ProposedProjectOverview.mxd 6/16/2020 PG



Proposed Project

- Estrella Substation
- - - 70kV Route
- ⋯ New Distribution Line Segments
- 70 kV Minor Route Variation 1
- Reconductoring Segment
- Distribution Underbuild
- Power Line Staging Areas
- Helicopter Landing Zones

- ▲ Additional 21/12 kV Pad-Mounted Transformer
- Paso Robles city limits
- Existing Infrastructure**
- Existing 500 kV Transmission Line
- Existing 230 kV Transmission Line
- Existing 70 kV Power Line
- Existing Substations

Source: ESRI 2020, NEET West and PG&E 2017



Figure
Proposed Project
Location and Overview

Estrella Substation and
Paso Robles Area
Reinforcement Project