

Appendix F
Allands Data and Research, Inc., Report



14947 W. Piccadilly Road, Goodyear, AZ 85395 • Phone: 623-535-7800 • Fax: 623-535-7900
www.allands.com • e-mail: sharon@allands.com

Historical Title and Environmental Research

REGULATORY DATABASE (ASTM) SEARCH

YOUR FILE NO:

ALLANDS FILE NO: 2015-04-012D

DATE OF REPORT: April 12, 2015

ALLANDS hereby reports the search results of Federal and State Databases according to ASTM standards for Phase I Environmental Site Assessments E 1527-13. Allands is not responsible for errors in the available records. The total liability is limited to the fee paid for this report. This is a confidential, privileged and protected document for the use of Tierra Right of Way Services.

1. The land referred to in this report is located in Imperial County, California, described as follows:

1/10th of a mile Corridor Study along power line corridor and existing DSA and proposed nodes along Streets and Avenues located on the Fort Yuma - Quechan Indian Reservation and in the vicinity of the towns of Bard and Winterhaven, California, being in Sections 13, 14, 21 to 24, inclusive, 26 & 27, Township 16 South, Range 22East; Sections 32 & 33, Township 15 South, Range 23 East; and in Sections 4 to 9, inclusive and 16 to 19, inclusive, Township 16 South, Range 23 East, San Bernardino Meridian and Base Line.

REGULATORY DATABASE SEARCH SUMMARY

Database	Date of Database	Approximate Minimum Search Distance (miles)	Reported Facilities
Standard Federal ASTM Environmental Record Sources			
NPL (National Priorities List) / Proposed NPL / DOD (Department of Defense Sites)	04/15	Within corridor boundaries	0
Delisted National Priorities List	04/15	Within corridor boundaries	0
CERCLIS (Comprehensive Environmental Response, Compensation and Liability Information System)/No Further Remedial Action Planned (NFRAP)	11/13	Within corridor boundaries	0
RCRA (Resource Conservation and Recovery Act) Large and Small Quantity Generators	04/15	Within corridor boundaries	0
RCRA – CORRACTS TSDFs (Corrective Action Treatment, Storage, and Disposal Facilities)	04/15	Within corridor boundaries	0
RCRA – Non-CORRACTS TSDFs	04/15	Within corridor boundaries	0
ERNS (Emergency Response Notification System)	04/15	Within corridor boundaries	0
Standard State ASTM Environmental Record Sources			
State Priority List	04/15	Within corridor boundaries	0
California Hazardous Materials Incident System (CHMIRS)	02/05	Within corridor boundaries	0
Solid Waste Facilities/Landfill Sites	04/15	Within corridor boundaries	0
CalSites / Envirostor	04/15	Within corridor boundaries	0
Registered USTs (Underground Storage Tanks) LUSTs (Leaking Underground Storage Tanks) Incident Reports (includes Tribal Records)	04/15	Within corridor boundaries	3
Additional Environmental Record Sources			
RCRA Compliance Facilities	04/15	Within corridor boundaries	0
Topographical / Aerial Maps	See text	Within corridor boundaries	2

Standard Federal ASTM Environmental Record Sources

SUPERFUND NATIONAL PRIORITIES LIST (NPL)

Under Section 105 of the Comprehensive Environmental Response, Compensation and Liability Act the Environmental Protection Agency established a National Priorities List (NPL) of Superfund sites. In addition, Proposed NPL and DOD (Department of Defense) Sites are researched in the section. These databases are provided by the EPA, dated April, 2015, and searched to identify all NPL/Proposed NPL/DOD sites within corridor boundaries.

No National Priorities List (NPL) / Proposed NPL / DOD Sites were found located within corridor boundaries.

DELISTED NATIONAL PRIORITIES LIST

Site may be delisted from the National Priorities List where no further response is appropriate. This database is provided by the Environmental Protection Agency, dated April, 2015, and searched to identify all Delisted NPL Sites within corridor boundaries.

No Delisted National Priorities List (NPL) Sites were found located within corridor boundaries.

FEDERAL CERCLIS / NFRAP LIST

The CERCLIS list contains sites which are either proposed to or on the NPL and sites which are in the screening and assessment phase for possible inclusion on the NPL. Those sites on the NFRAP list have no further remedial action planned. This database is provided by EPA, dated November, 2013, and searched for facilities within corridor boundaries.

No CERCLIS / NFRAP facilities were found located within corridor boundaries.

RESOURCE CONSERVATION AND RECOVERY ACT FACILITIES (RCRA)

Under RCRA the Environmental Protection Agency compiles a database of facilities that are involved in the generation of hazardous materials. This database is from the EPA, dated April, 2015 and checked for Federal RCRA facilities located within corridor boundaries.

No Federal RCRA handlers were found located within corridor boundaries.

CORRACTS FACILITIES

Under RCRA the Environmental Protection Agency compiles a database of Corrective Action Sites, sites with known contamination. Also known as the RCRA CORRACTS List, this is a list maintained by the EPA of RCRA sites at which contamination has been discovered and where some level of corrective clean-up activity has been undertaken. For example, a site may have been on the RCRA TSD or the RCRA Generators site list, and was placed on the CORRACTS list once contamination was discovered and remediation was underway. This database is dated April, 2015, and checked for facilities which occurred within corridor boundaries.

No Facilities were found which occurred within corridor boundaries.

TSD FACILITIES

Under RCRA the Environmental Protection Agency compiles a database of facilities that are involved in the transportation, treatment, storage, or disposal of hazardous materials. This database is from the EPA, dated April, 2015, and checked for Facilities which occurred within corridor boundaries.

No TSD Facilities were found which occurred within corridor boundaries.

FEDERAL EMERGENCY RESPONSE NOTIFICATION SYSTEM (ERNS) LIST

The ERNS list is a national database used to collect information on reported releases of oil and hazardous substances. This database is provided by the National Response Center and the EPA through the Right of Know Net by OMB Watch and Unison Institute from 1983 to April, 2015, and checked for incidents located within corridor boundaries.

No incidents were found located within corridor boundaries.

Standard State ASTM Environmental Record Sources

STATE PRIORITY LIST

The California Department of Toxic Substances Control (DTSC) has developed an electronic database system with information about sites that are known to be contaminated with hazardous substances as well as information on uncharacterized properties where further studies may reveal problems. The database, referred to as "CalSites," is used primarily by DTSC's staff as an informational tool to evaluate and track activities at properties that may have been affected by the release of hazardous substances. This list includes CALSITE Active Workplan (AWP); Sites that are not AWP (Annual workplan) are not actively being remediated, but are still being tracked on the State Equivalent CERCLIS List (SCL)

No Sites were found located within corridor boundaries.

CALIFORNIA HAZARDOUS MATERIAL INCIDENT REPORT SYSTEM (CHMIRS)

The California Office of Emergency Services documents spills and incidents involving hazardous materials that are reported to the unit prior to the state of California adopting the National Incident Management System. This database is dated February, 2005 and checked for hazardous material incidents which occurred within corridor boundaries.

Property within corridor boundaries was not found on this list.

SOLID WASTE INFORMATION SYSTEM (SWIS)

The Solid Waste Information System (SWIS) database contains information on solid waste facilities, operations, and disposal sites throughout the State of California. The types of facilities found in this database include landfills, transfer stations, material recovery facilities, composting sites, transformation facilities, waste tire sites, and closed disposal sites.

For each facility, the database contains information about location, owner, operator, facility type, regulatory and operational status, authorized waste types, local enforcement agency and inspection and enforcement records.

The data in the [facility database](#) is continuously updated and reviewed April, 2015 for facilities located within corridor boundaries.

No facilities were found located within corridor boundaries.

SITE MITIGATION AND BROWNFIELDS REUSE PROGRAM DATABASE (CALSTITES) / DEPARTMENT OF TOXIC SUBSTANCES CONTROL (ENVIROSTOR)

The California Department of Toxic Substances Control (DTSC) has developed an electronic database system with information about sites that are known to be contaminated with hazardous substances.. The Site Mitigation and Brownfields Reuse Program Database was known as CalSites. The Voluntary Cleanup Program (VCP) category contains only those properties undergoing voluntary investigation and/or cleanup and which are listed in the Voluntary Cleanup Program. DTSC recently replaced the “CalSites” database with a new database of hazardous substance release sites, known as the “EnviroStor” database. This database was reviewed April 2015, for facilities located within corridor boundaries.

No facilities were found located within corridor boundaries.

**UNDERGROUND STORAGE TANKS
(UST, AST & LUST)**

Owners of USTs are required to report any and all releases of tank contents for which an ongoing file documenting the nature of contamination and the status of each such incident is maintained. This database is maintained by the State Water Resources Control Board and individual cities, dated April, 2015 and searched for facilities located within corridor boundaries.

FACILITY	ID	ADDRESS	STATUS
U S A Supersave / Salvador Huerta	T0602500185	2115 Winterhaven Drive	Open - Inactive as of 8/27/2014
Ross Corner Store	T0602592922	1460 West Ross Road	Completed - Case Closed as of 8/5/2013
Bard / Winterhaven Road Yard	T0602500186	1477 Ross Road	Completed - Case Closed as of 2-13-2008

**For more information replace “xxx” below with ID from table above
http://geotracker.waterboards.ca.gov/profile_report.asp?global_id=xxx**

Additional Environmental Record Sources

RESOURCE CONSERVATION AND RECOVERY ACT (RCRA) COMPLIANCE FACILITIES

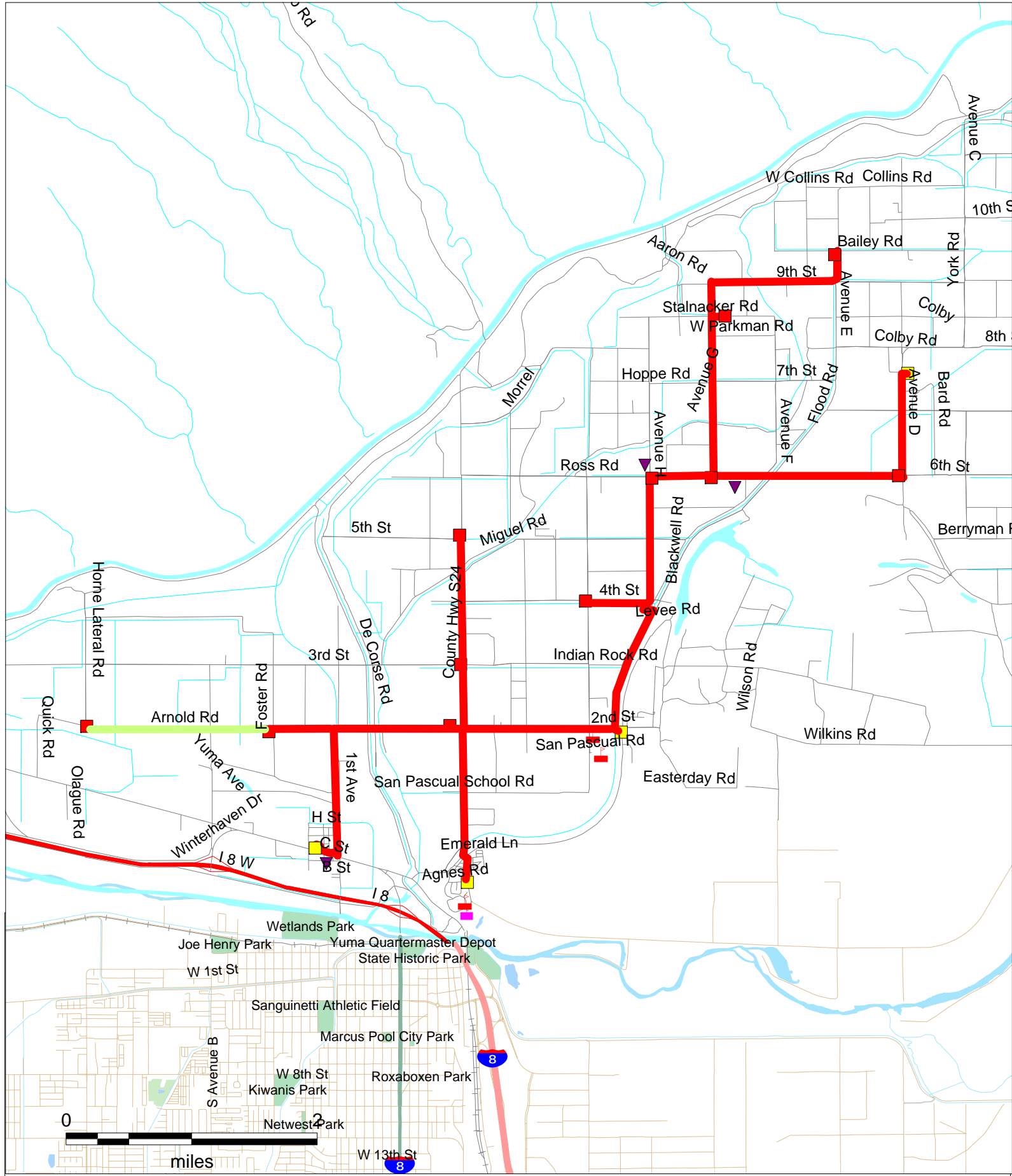
The RCRA Compliance Log lists facilities that have been or presently are under investigation for non-compliance with RCRA regulations. Inclusion of any facility on this list indicates a history of compliance problems and RCRA regulatory violation. This database is from the EPA, dated April, 2015, and searched for compliance facilities within corridor boundaries.

No compliance facilities were found located within corridor boundaries.

USGS 7.5 MINUTE TOPOGRAPHICAL MAPS AERIAL PHOTOS

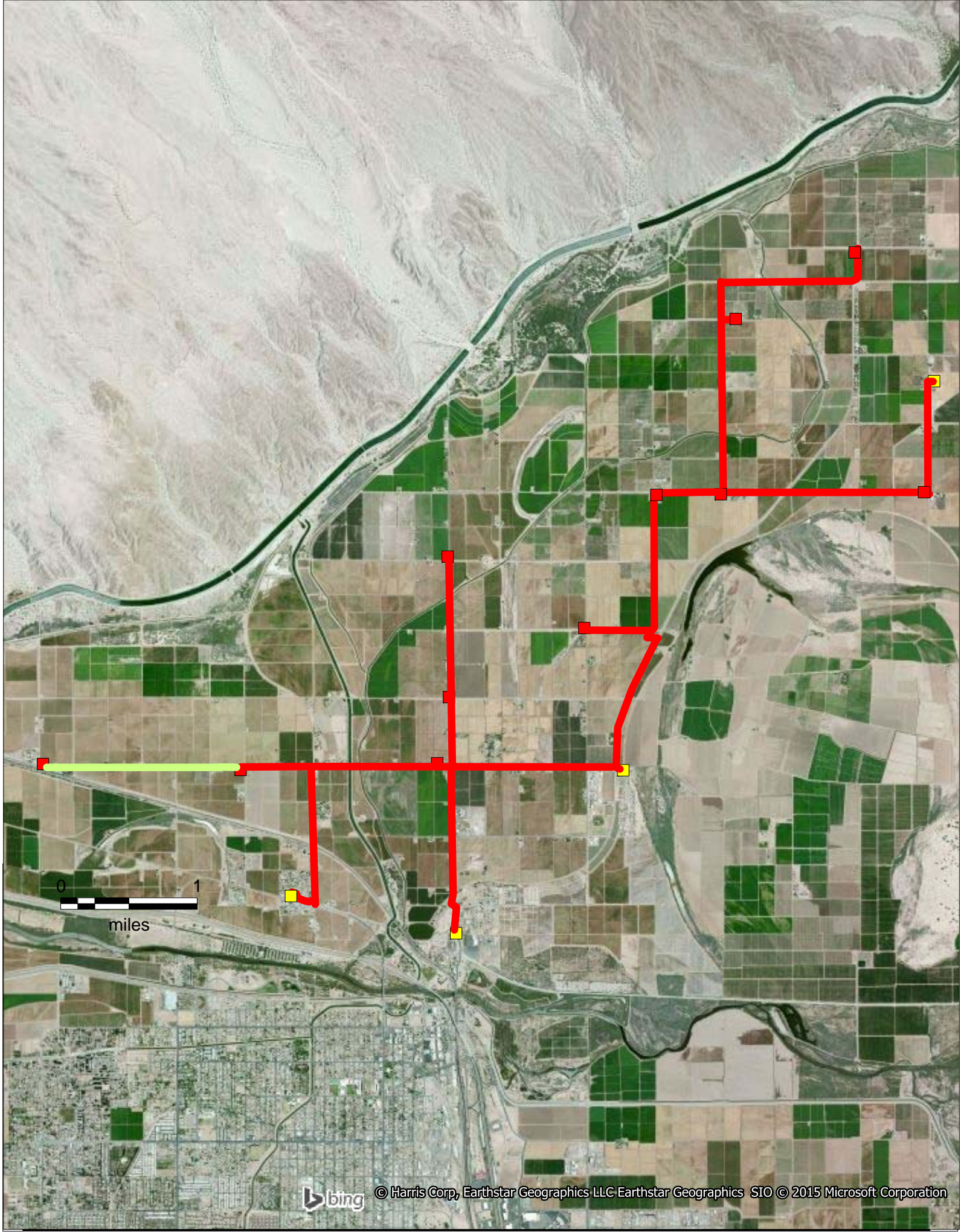
The United States Geological Survey Topographic maps and Aerial Photos are derived from Terrain Navigator Software from Maptech, Inc. (www.maptech.com) and are for informational purposes only.

NAME	TYPE	DATE
Bard	Topo	1965 revised 1979
Bing Aerial	Aerial	2015



LEGEND

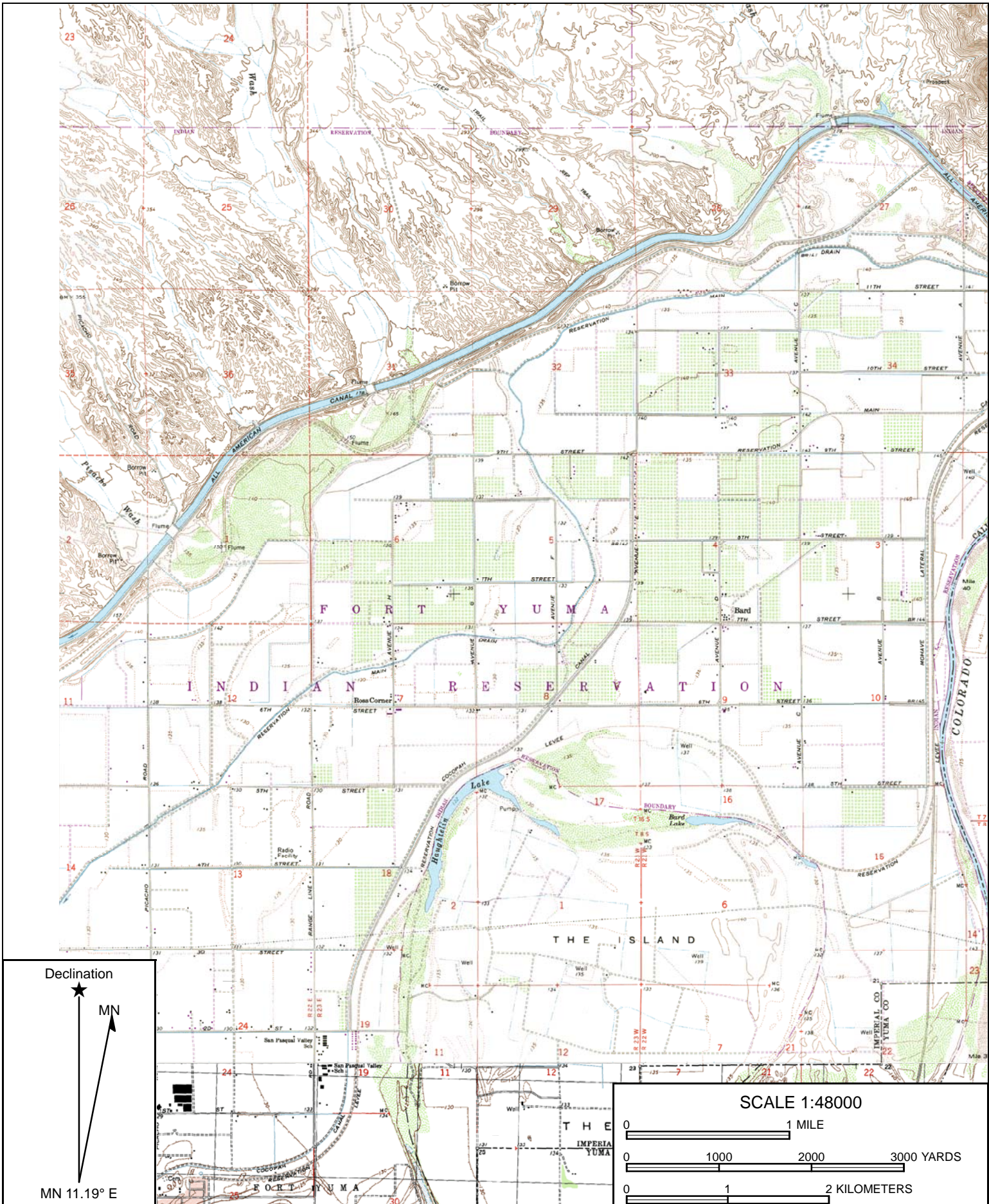
	SITE	USTs	CERCLA / NFRAP	RCRA (Generators, TSD & CORRACTS TSD)	SCHOOL
	LUSTs	LANDFILLS	RCRA COMPLIANCE		



0 1
miles



© Harris Corp, Earthstar Geographics LLC Earthstar Geographics SIO © 2015 Microsoft Corporation

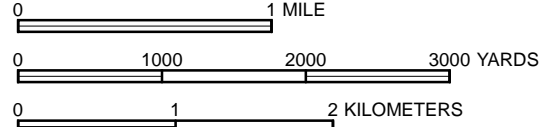


Declination



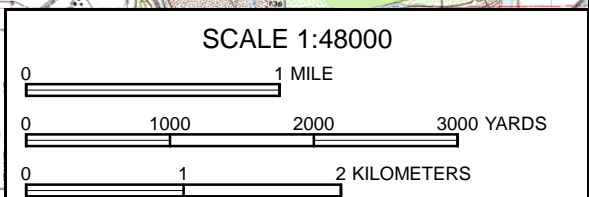
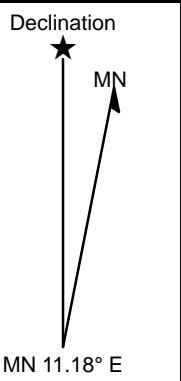
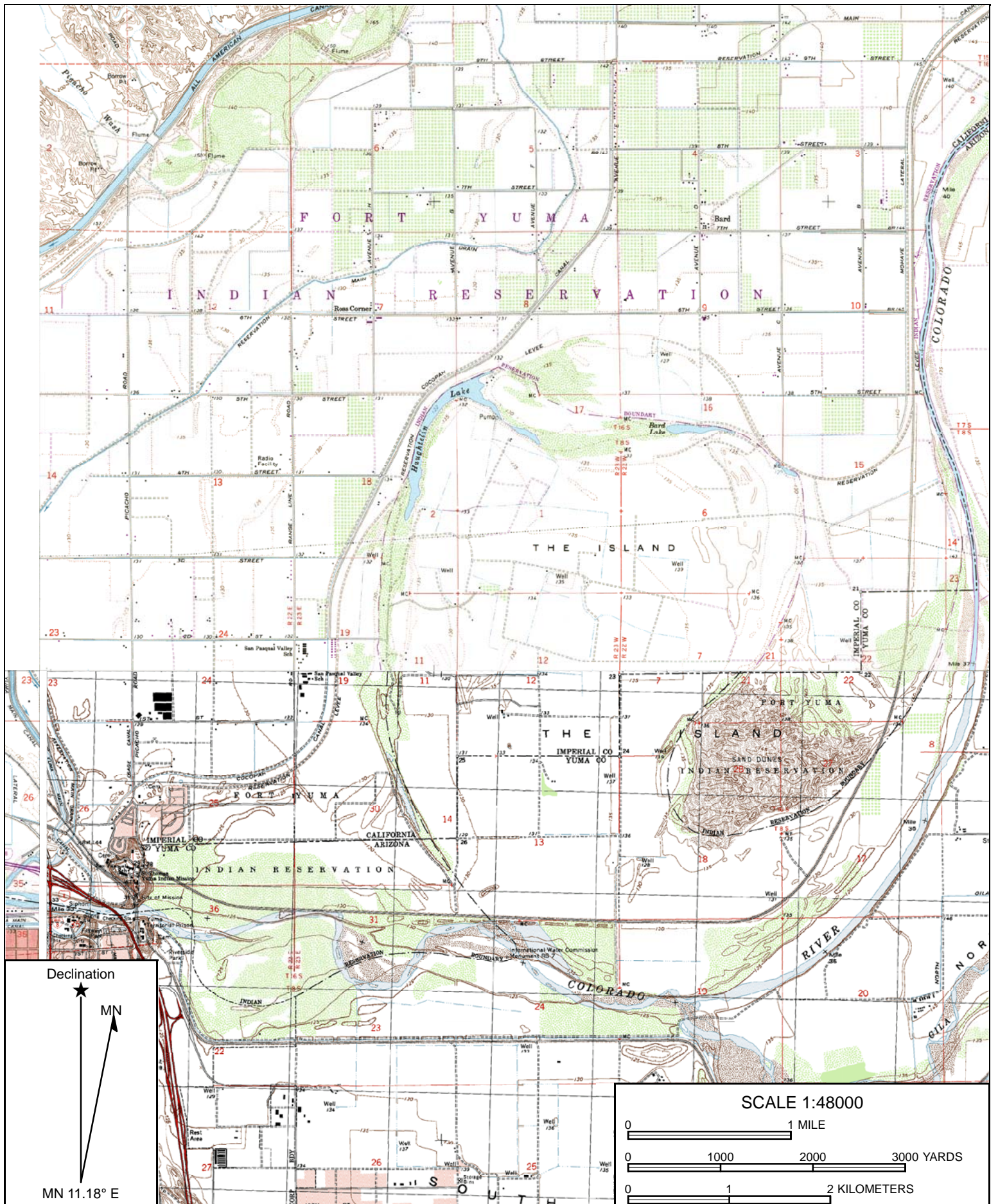
MN 11.19° E

SCALE 1:48000



Name: BARD
 Date: 04/12/15
 Scale: 1 inch = 4,000 ft.

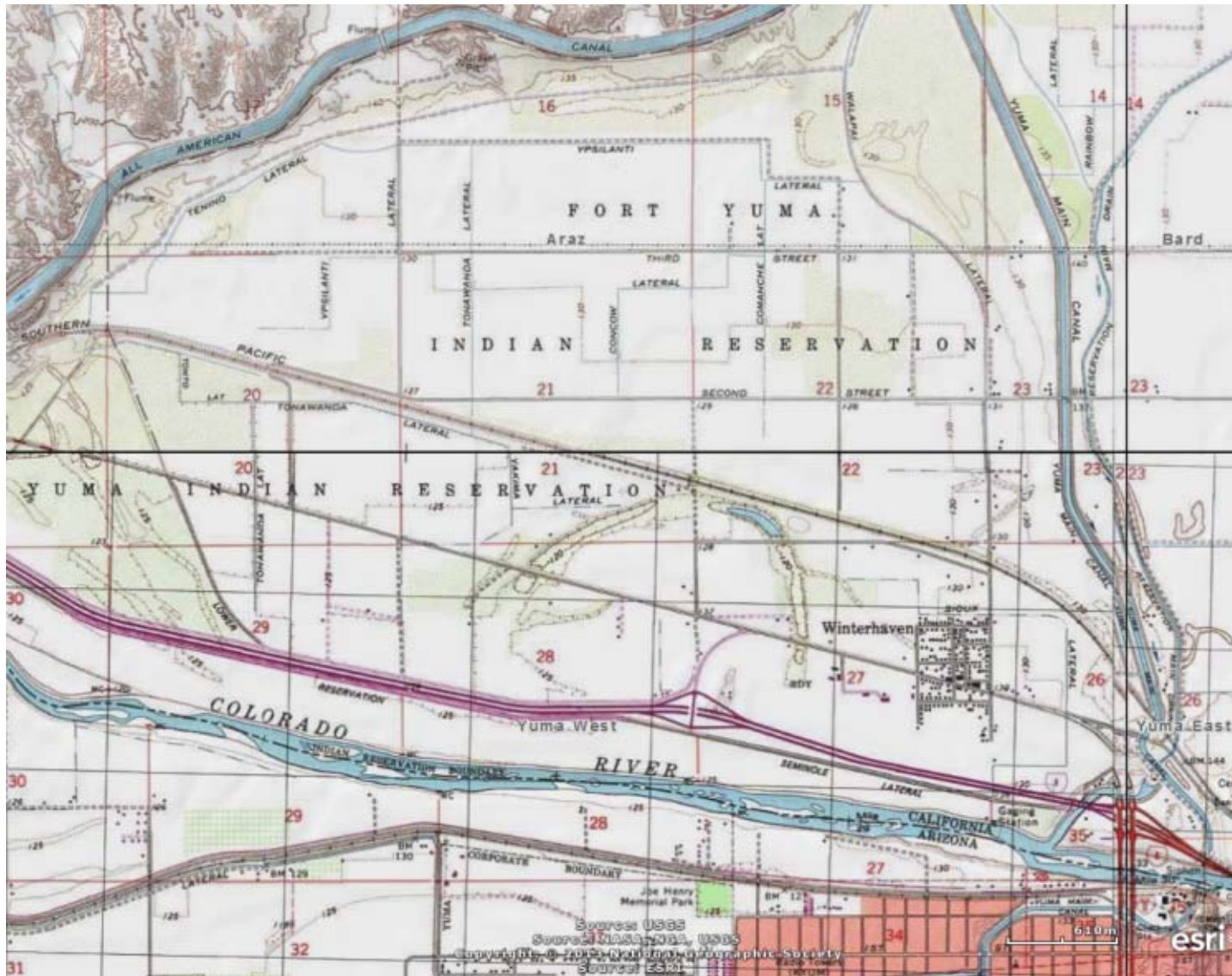
Location: 032° 47' 26.5228" N, 114° 34' 44.2079" W
 2015-04-012.north

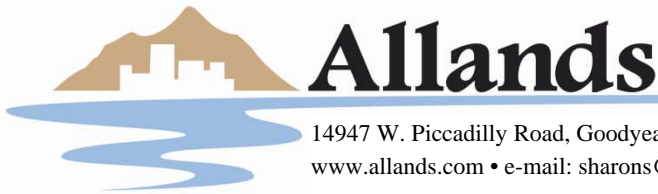


Name: BARD
 Date: 04/12/15
 Scale: 1 inch = 4,000 ft.

Location: 032° 45' 21.0674" N, 114° 34' 36.0000" W
 2015-04-012

Topo West





14947 W. Piccadilly Road, Goodyear, AZ 85395 • Phone: 623-535-7800 • Fax: 623-535-7900
www.allands.com • e-mail: sharons@allands.com

Historical Title and Environmental Research

**TITLE AND JUDICIAL RECORDS FOR ENVIRONMENTAL LIENS AND
ACTIVITY AND USE LIMITATIONS; VOLUNTARY ENVIRONMENTAL
MITIGATION USE RESTRICTIONS BY OWNERS (VEMUR) AND
DECLARATION OF ENVIRONMENTAL USE RESTRICTIONS (DEUR)**

YOUR FILE NO:

ALLANDS FILE NO: 2015-04-012E

Date of Report: April 12, 2015

Title Plant Date***: April 8, 2015

***The Title Plant Date reflects the most current data made available by the information sources used at the time the research was performed.

ALLANDS hereby presents an Environmental Search Report to the land described below. The total liability is limited to the fee paid for this report. Allands is not responsible for errors in the available records. The total liability is limited to the fee paid for this report. This is a confidential, privileged and protected document for the use of Tierra Right of Way Services.

1. The land referred to in this report is located in Imperial County, California.
2. 1/10th of a mile Corridor Study along power line corridor and existing DSA and proposed nodes along Streets and Avenues located on the Fort Yuma - Quechan Indian Reservation and in the vicinity of the towns of Bard and Winterhaven, California, being in Sections 13, 14, 21 to 24, inclusive, 26 & 27, Township 16 South, Range 22 East; Sections 32 & 33, Township 15 South, Range 23 East; and in Sections 4 to 9, inclusive and 16 to 19, inclusive, Township 16 South, Range 23 East, San Bernardino Meridian and Base Line.
3. No VEMUR'S, DEUR'S; Environmental Liens, Brownfields, institutional controls, engineering controls, or activity and use limitations, if any, were found currently recorded against the property as searched at the subject county recorder's office.