

APPENDIX B.7
CUMULATIVE PROJECTS

Cumulative Project List – Fresno County

Agency	Name	Description	Location	Status
Fresno County	Zenergy, Inc. Gas Exploration Well	Exploratory gas well and production facilities on a 37,026 sq. ft. portion of a 13.45 acre parcel. If natural gas is discovered a 20,328 ft. pipeline will connect the production site with an existing pipeline located southeast of the subject parcel.	15 miles west of the City of Firebaugh. North side of W. Shields Ave. between Interstate 5 and W. Oxford Ave.	Under review
Fresno County	Petrogulf Corporation	Exploratory gas well and production facilities on a 37,500 square-foot portion of a 322.22-acre parcel . If natural gas is discovered, a 1,400 foot pipeline will connect the production site with the existing Arroyo Pipeline, located on the sample parcel of land.	West of the City of Firebaugh. Cross Streets: Fairfax Avenue Township: 11S Range: 13E Section: 3, 4	Under review
Fresno County	San Joaquin River Water Quality Improvement Project Phase I, Part 2	Acquisition of up to 2,900 acres of land to expand the existing 4,000-acre Phase I In-Valley Treatment/ Drainage Reuse Facility to reach up to 6,900 acres of reuse area within the GDA.	Cross Streets: 7 miles west of Russell Avenue and east to approximately Fairfax Avenue Township: 12,13S Range: 1, 13E	Under review
Fresno County	Caltrans	SR 180 road widening between Fresno/Kings Slough and Mendota	SR 180 between Fresno/Kings Slough and the City of Mendota	Under construction
Fresno County	Microgy, Inc.	Biogas Facility and approx. 6 miles of 6-inch diameter gas pipeline on private land along SR 180 between James Road and San Mateo Avenue	Southeast corner SR 180 and James Road, approx 8 miles west of the City of Kerman	Under review
Fresno County	Panoche Energy Center	400 MW peaker power plant Fresno Co	West Panoche Road, approx. 2.5 northeast of Interstate 5	Approved January 2008
Fresno County	Starwood Power Project	120 MW peaker power plant	West Panoche Road, approx. 2.5 northeast of Interstate 5	Approved January 2008

Cumulative Project List – Madera County

Agency	Name	Description	Location	Status
Madera County	Brooks Ransom	Grain storage warehouse and rail offloading facilities with an average of four trucks per day.	West side of Avenue 20 1/2, approx. 0.4 mile south of the intersection Avenue 20 1/2 and Road 21	Under review
Madera County	General Plan Amendment RRM Design Group	Amendment to the 1995 General Plan to designate the boundaries of a future planning area, Joaquin Bend	Northeast, northwest and southeast sides of the intersection of Avenue 7 and Highway 99	Under review

Cumulative Project List – City of Kerman

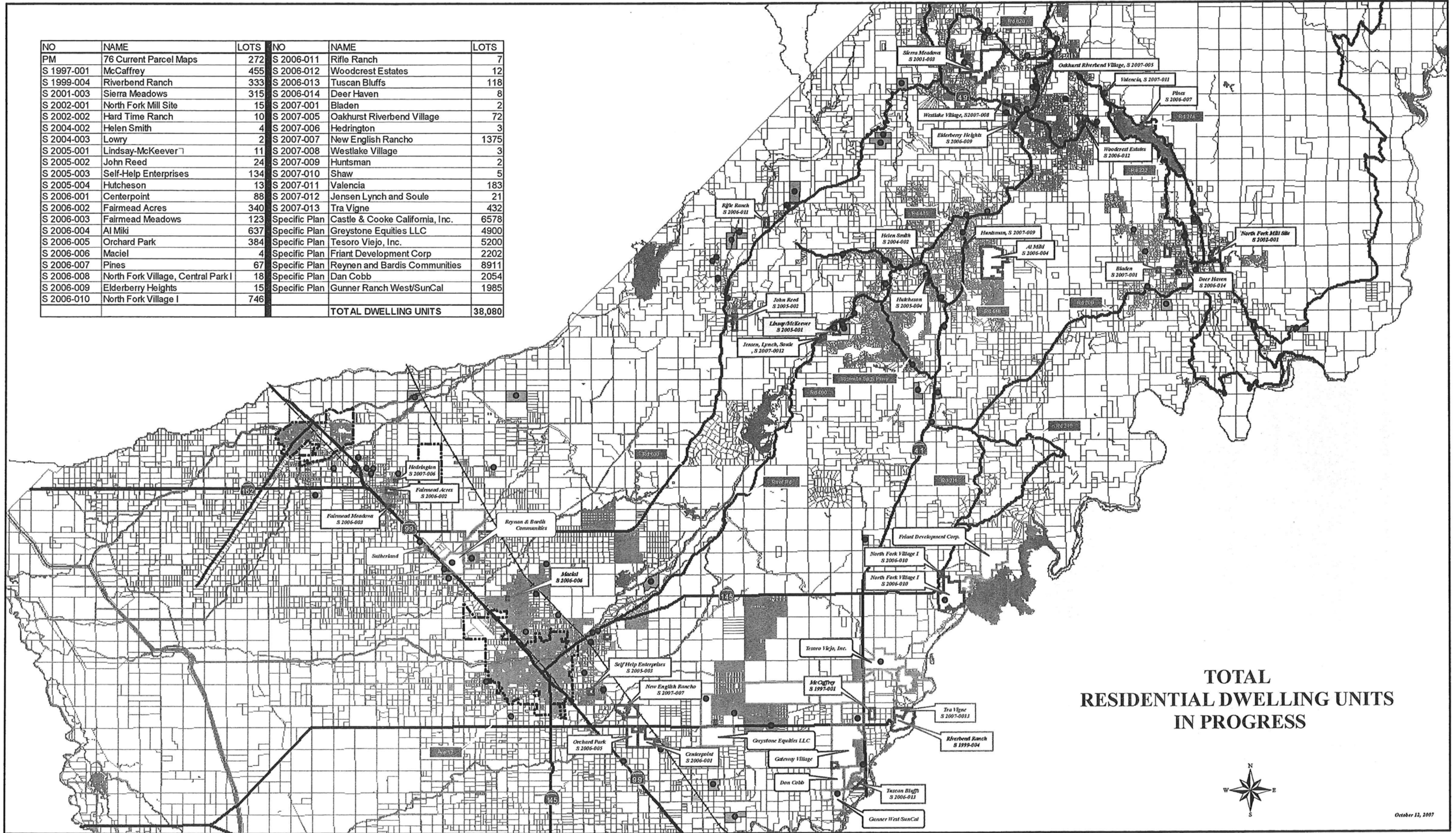
Agency	Name	Description	Location	Status
Kerman	Kerman Neighborhood Shopping Center	75,000 s.f. retail space on 8.5 acres (nine parcels).	Southeast corner of Whitesbridge Avenue (SR 80) and Madera Avenue (SR 145)	Approved. Construction start is expected in 2008 and completion is expected in 2009.
Kerman	Autumn Ridge Senior Facility	34 bed senior facility	Stanislaus Ave. between Golden Rod and 16 th (Stanislaus needs to be extended and 16 th Street has not yet been constructed).	Approved and under construction. Completion expected in 2008.
Kerman	Northeast Annexation Project	3 commercial tracts, 106 single family homes, 10 multi-family homes, and 20 acre school site.	Corner of Golden Rod and SR 80.	Project is being developed piecemeal. To date no parcel has final permits for development.

NO	NAME	ACRES	LOTS	STATUS
S 1997-001	McCaffrey	80	455	Hold
S 1999-004	Riverbend Ranch	370	333	Hold
S 2000-001	Central Valley Partners	162	444	Hold
S 2001-003	Sierra Meadows	442	315	EIR
S 2002-001	North Fork Mill Site	129.56	15	Hold
S 2002-002	Hard Time Ranch	68.89	10	Recorded
S 2004-002	Helen Smith	42.16	4	Tent
S 2004-003	Lowry	7.45	2	Recorded
S 2005-001	Lindsay-McKeever	59.37	11	Withdrawn
S 2005-002	John Reed	133.96	24	Tent
S 2005-003	Self-Help Enterprises	38.16	134	Tent
S 2005-004	Hutcheson	44.7	13	Tent
S 2006-001	Centerpoint	305.1	88	Final
S 2006-002	Fairmead Acres	65.93	340	Prel
S 2006-003	Fairmead Meadows	24.14	123	Prel
S 2006-004	Al Miki	897.83	637	EIR
S 2006-005	Orchard Park	72.15	384	EIR
S 2006-006	Maciel	4.82	4	Dead
S 2006-007	Pines	10.82	67	Tent
S 2006-008	North Fork Village, Central Park I	40	18	EIR
S 2006-009	Elderberry Heights	12.77	15	Tent
S 2006-010	North Fork Village I	1161	746	EIR
S 2006-011	Rifle Ranch	40.3	7	Prel
S 2006-012	Woodcrest Estates	74.77	12	Tent
S 2006-013	Tuscan Bluffs	57.3	118	Prel
S 2006-014	Deer Haven	50	8	Tent
S 2007-001	Bladen	21.92	2	Prel
S 2007-003	West Oaks Subdivision I	57.68	7	Prel
S 2007-004	West Oaks Subdivision II	42.6	4	Prel
S 2007-005	Oakhurst Riverbend Village	12.26	72	Prel
S 2007-006	Hedrington	10	3	Prel
S 2007-007	New English Rancho	242	1375	EIR
S #2007-008	Liberty Village	114.77	10	Tent
S #2007-009	Huntsman	6.86	2	Prel
S #2007-010	Shaw Subdivision	50.11	5	Prel
S #2007-011	Valencia Subdivision	11.24	183	Tent
S #2007-013	Tra Vigne Subdivision	161.99	432	Prel
S #2007-014	Sumpf Subdivision	43.9	34	Prel
S #2007-015	Schneider	39.74	12	Tent
S #2008-001	Oakhurst Town Homes	40.36	199	Prel
S #2008-002	Muller	38.43	8	Prel
S #2008-003	Bella Subdivision	40	8	Prel
S #2008-004	SAW Development Subdivision	8.34	15	Prel
S #2008-006	Cimarron Estates	74.36	31	Prel
S #2008-007	Coarsegold Commercial and Industrial P	30.12	15	Prel

Source: Madera County Resource Management Agency

Projects in Progress

NO	NAME	LOTS	NO	NAME	LOTS
PM	76 Current Parcel Maps	272	S 2006-011	Rifle Ranch	7
S 1997-001	McCaffrey	455	S 2006-012	Woodcrest Estates	12
S 1999-004	Riverbend Ranch	333	S 2006-013	Tuscan Bluffs	118
S 2001-003	Sierra Meadows	315	S 2006-014	Deer Haven	8
S 2002-001	North Fork Mill Site	15	S 2007-001	Bladen	2
S 2002-002	Hard Time Ranch	10	S 2007-005	Oakhurst Riverbend Village	72
S 2004-002	Helen Smith	4	S 2007-006	Hedrington	3
S 2004-003	Lowry	2	S 2007-007	New English Rancho	1375
S 2005-001	Lindsay-McKeever	11	S 2007-008	Westlake Village	3
S 2005-002	John Reed	24	S 2007-009	Huntsman	2
S 2005-003	Self-Help Enterprises	134	S 2007-010	Shaw	5
S 2005-004	Hutcheson	13	S 2007-011	Valencia	183
S 2006-001	Centerpoint	88	S 2007-012	Jensen Lynch and Soule	21
S 2006-002	Fairmead Acres	340	S 2007-013	Tra Vigne	432
S 2006-003	Fairmead Meadows	123	Specific Plan	Castle & Cooke California, Inc.	6578
S 2006-004	Al Miki	637	Specific Plan	Greystone Equities LLC	4900
S 2006-005	Orchard Park	384	Specific Plan	Tesoro Viejo, Inc.	5200
S 2006-006	Maciel	4	Specific Plan	Friant Development Corp	2202
S 2006-007	Pines	67	Specific Plan	Reynen and Bardis Communities	8911
S 2006-008	North Fork Village, Central Park I	18	Specific Plan	Dan Cobb	2054
S 2006-009	Elderberry Heights	15	Specific Plan	Gunner Ranch West/SunCal	1985
S 2006-010	North Fork Village I	746			
TOTAL DWELLING UNITS					38,080



**TOTAL
RESIDENTIAL DWELLING UNITS
IN PROGRESS**

