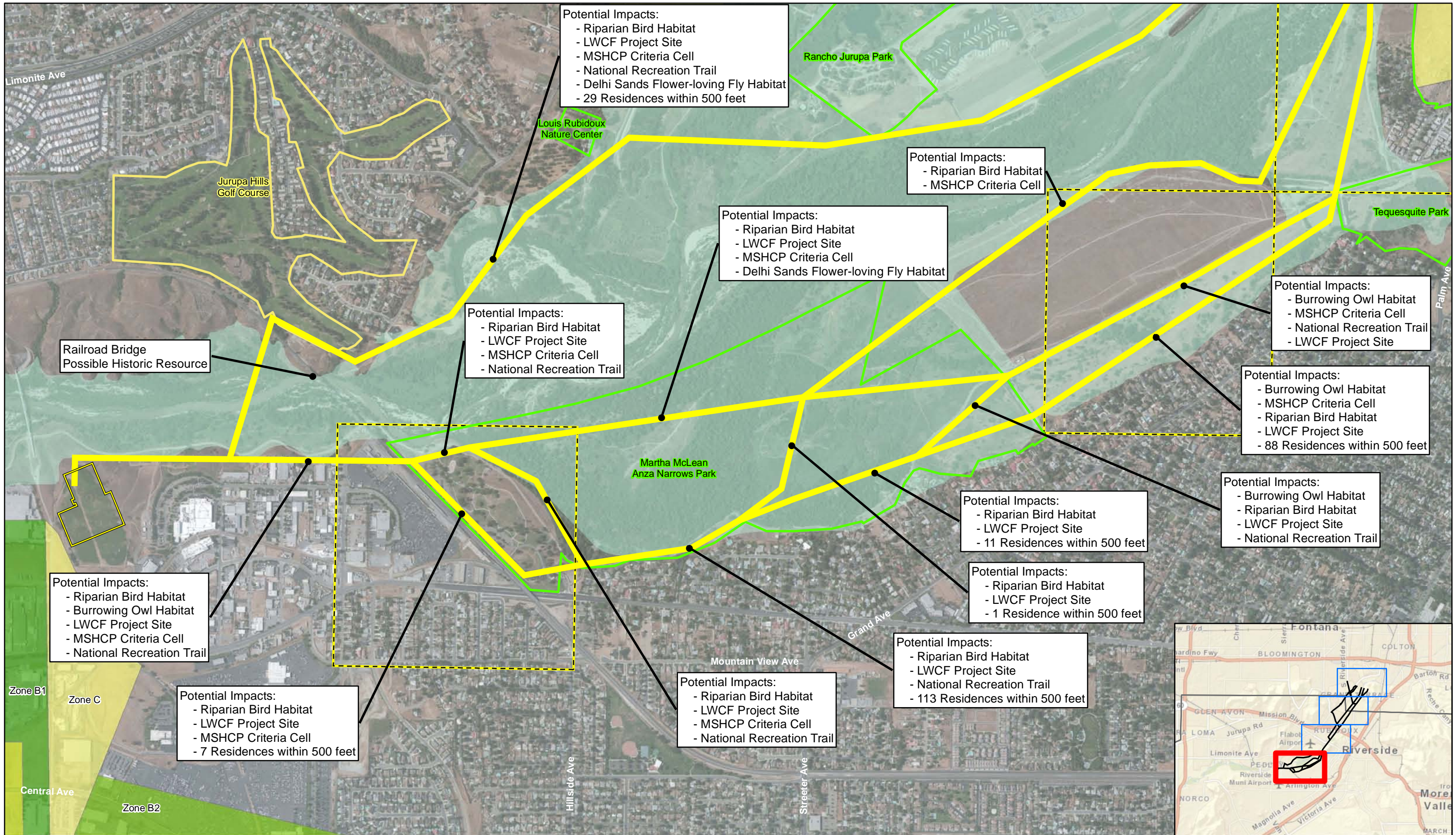

ATTACHMENT F: EASTERN ROUTE CONSTRAINTS MAP

THIS PAGE INTENTIONALLY LEFT BLANK



Potential Impacts:
 - Riparian Bird Habitat
 - LWCF Project Site
 - MSHCP Criteria Cell
 - National Recreation Trail
 - Delhi Sands Flower-loving Fly Habitat
 - 29 Residences within 500 feet

Potential Impacts:
 - Riparian Bird Habitat
 - MSHCP Criteria Cell

Potential Impacts:
 - Riparian Bird Habitat
 - LWCF Project Site
 - MSHCP Criteria Cell
 - Delhi Sands Flower-loving Fly Habitat

Potential Impacts:
 - Burrowing Owl Habitat
 - MSHCP Criteria Cell
 - National Recreation Trail
 - LWCF Project Site

Potential Impacts:
 - Riparian Bird Habitat
 - LWCF Project Site
 - MSHCP Criteria Cell
 - National Recreation Trail

Potential Impacts:
 - Burrowing Owl Habitat
 - MSHCP Criteria Cell
 - Riparian Bird Habitat
 - LWCF Project Site
 - 88 Residences within 500 feet

Railroad Bridge
 Possible Historic Resource

Potential Impacts:
 - Burrowing Owl Habitat
 - Riparian Bird Habitat
 - LWCF Project Site
 - National Recreation Trail

Potential Impacts:
 - Riparian Bird Habitat
 - LWCF Project Site
 - 11 Residences within 500 feet

Potential Impacts:
 - Riparian Bird Habitat
 - Burrowing Owl Habitat
 - LWCF Project Site
 - MSHCP Criteria Cell
 - National Recreation Trail

Potential Impacts:
 - Riparian Bird Habitat
 - LWCF Project Site
 - 1 Residence within 500 feet

Potential Impacts:
 - Riparian Bird Habitat
 - LWCF Project Site
 - MSHCP Criteria Cell
 - 7 Residences within 500 feet

Potential Impacts:
 - Riparian Bird Habitat
 - LWCF Project Site
 - National Recreation Trail
 - 113 Residences within 500 feet

Potential Impacts:
 - Riparian Bird Habitat
 - LWCF Project Site
 - MSHCP Criteria Cell
 - National Recreation Trail

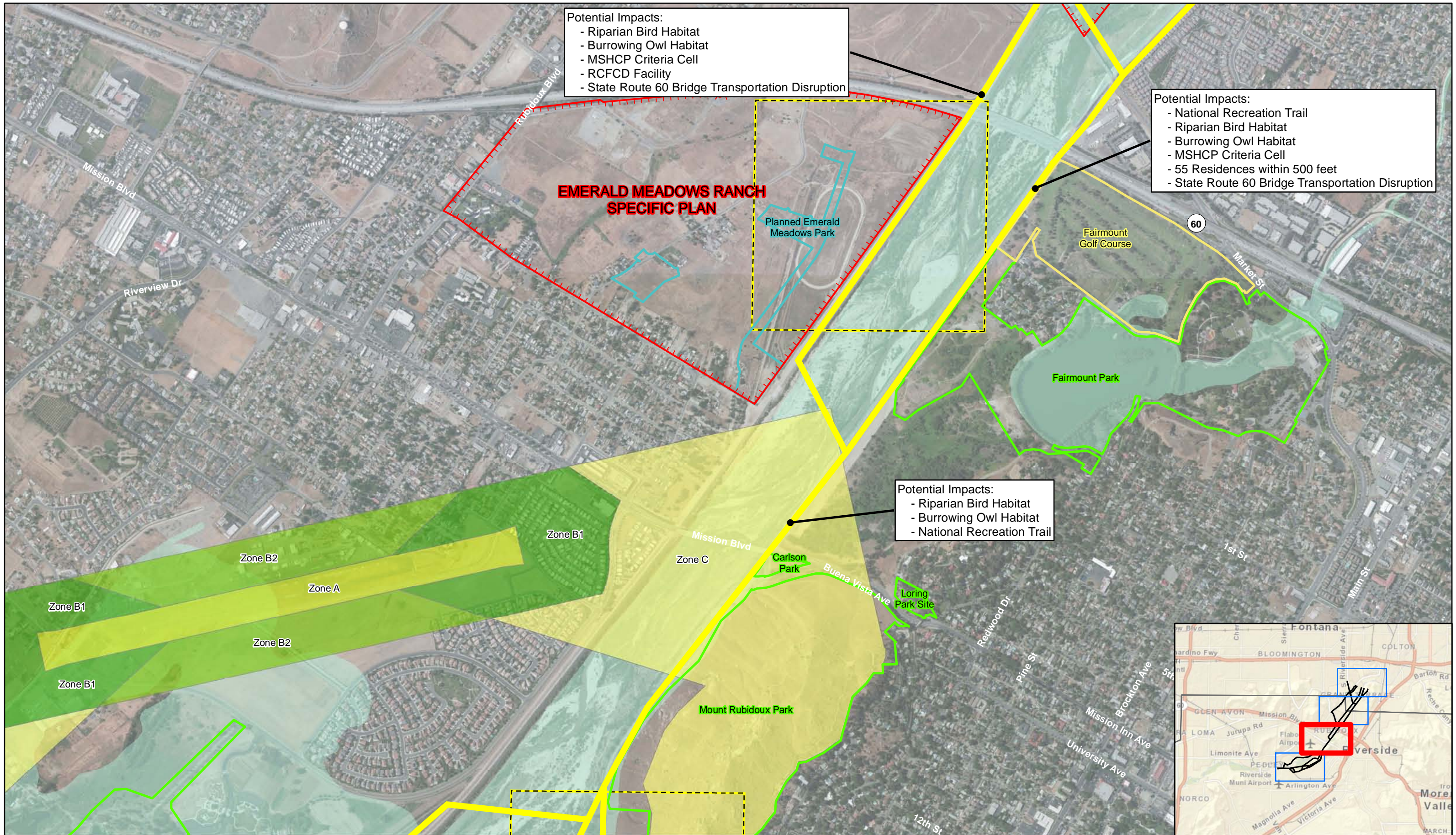
Legend

- Potential Route Segment
- MSHCP Criteria Cell
- Specific Plan
- Proposed Substation
- Local Park
- 100 year flood zone

Note:
 MSHCP = Multiple Species Habitat Conservation Plan
 LWCF = Land and Water Conservation Fund
 RCFCFD = Riverside County Flood Control District

Riverside Transmission Reliability Project
 Eastern Route Environmental Constraints

Page 1 of 4



Potential Impacts:

- Riparian Bird Habitat
- Burrowing Owl Habitat
- MSHCP Criteria Cell
- RCFCD Facility
- State Route 60 Bridge Transportation Disruption

Potential Impacts:

- National Recreation Trail
- Riparian Bird Habitat
- Burrowing Owl Habitat
- MSHCP Criteria Cell
- 55 Residences within 500 feet
- State Route 60 Bridge Transportation Disruption

Potential Impacts:

- Riparian Bird Habitat
- Burrowing Owl Habitat
- National Recreation Trail

**EMERALD MEADOWS RANCH
SPECIFIC PLAN**

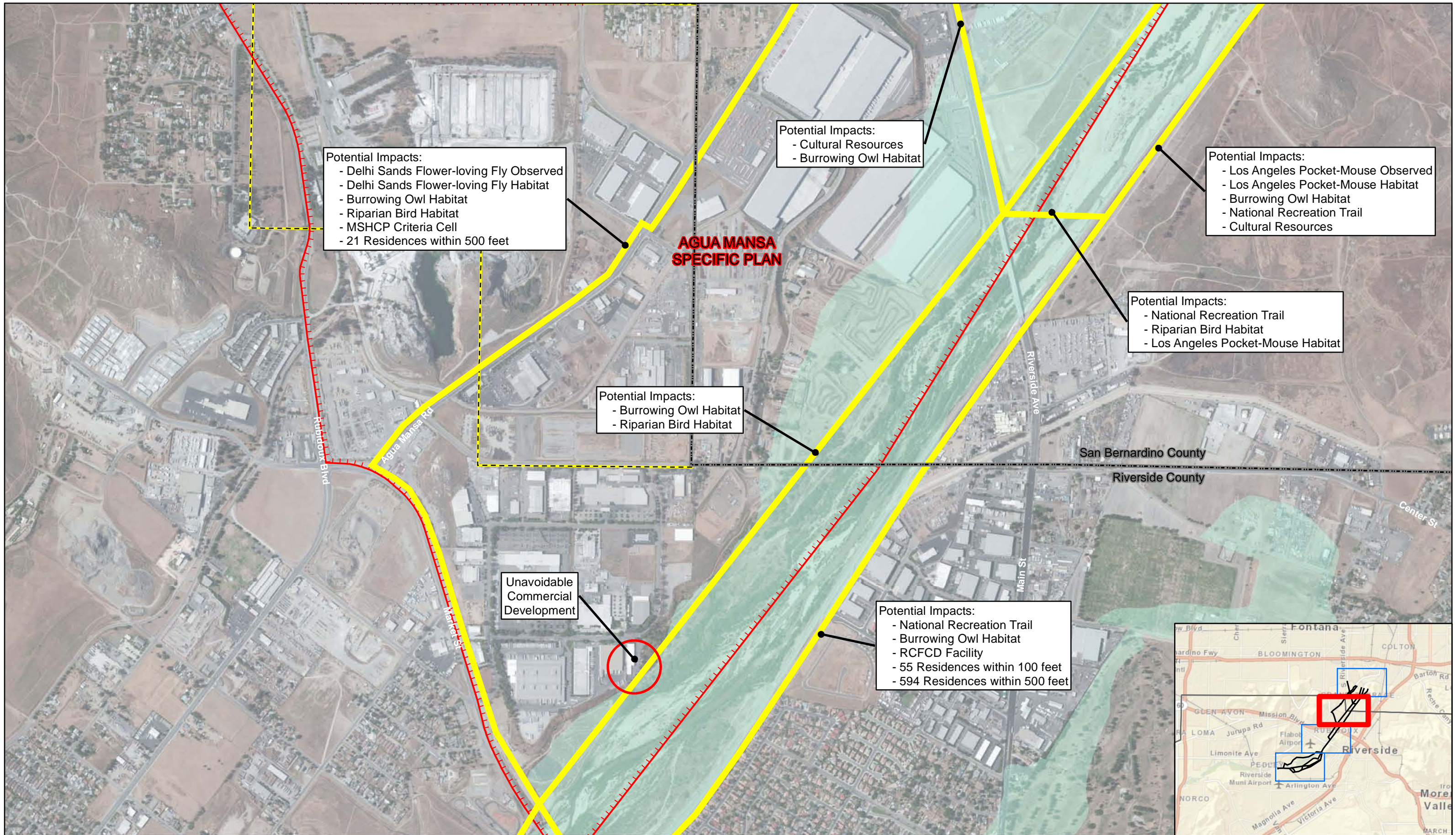
Legend

	Potential Route Segment		Local Park
	Proposed Substation		MSHCP Criteria Cell
	Specific Plan		100 year flood zone

Note:
 MSHCP = Multiple Species Habitat Conservation Plan
 LWCF = Land and Water Conservation Fund
 RCFCD = Riverside County Flood Control District

Riverside Transmission Reliability Project
 Eastern Route Environmental Constraints

Page 2 of 4



Potential Impacts:
 - Delhi Sands Flower-loving Fly Observed
 - Delhi Sands Flower-loving Fly Habitat
 - Burrowing Owl Habitat
 - Riparian Bird Habitat
 - MSHCP Criteria Cell
 - 21 Residences within 500 feet

Potential Impacts:
 - Cultural Resources
 - Burrowing Owl Habitat

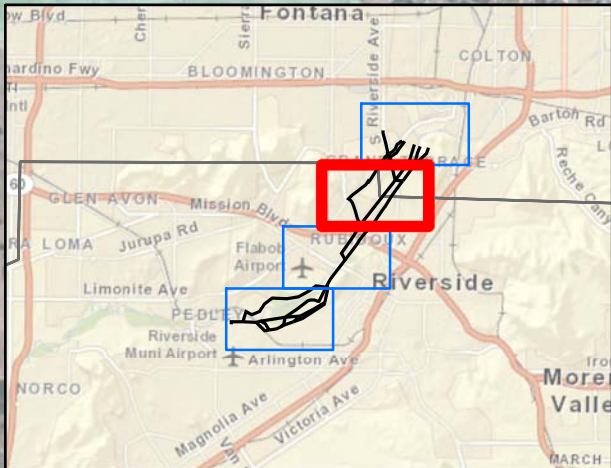
Potential Impacts:
 - Los Angeles Pocket-Mouse Observed
 - Los Angeles Pocket-Mouse Habitat
 - Burrowing Owl Habitat
 - National Recreation Trail
 - Cultural Resources

Potential Impacts:
 - National Recreation Trail
 - Riparian Bird Habitat
 - Los Angeles Pocket-Mouse Habitat

Potential Impacts:
 - Burrowing Owl Habitat
 - Riparian Bird Habitat

Unavoidable
 Commercial
 Development

Potential Impacts:
 - National Recreation Trail
 - Burrowing Owl Habitat
 - RCFCF Facility
 - 55 Residences within 100 feet
 - 594 Residences within 500 feet

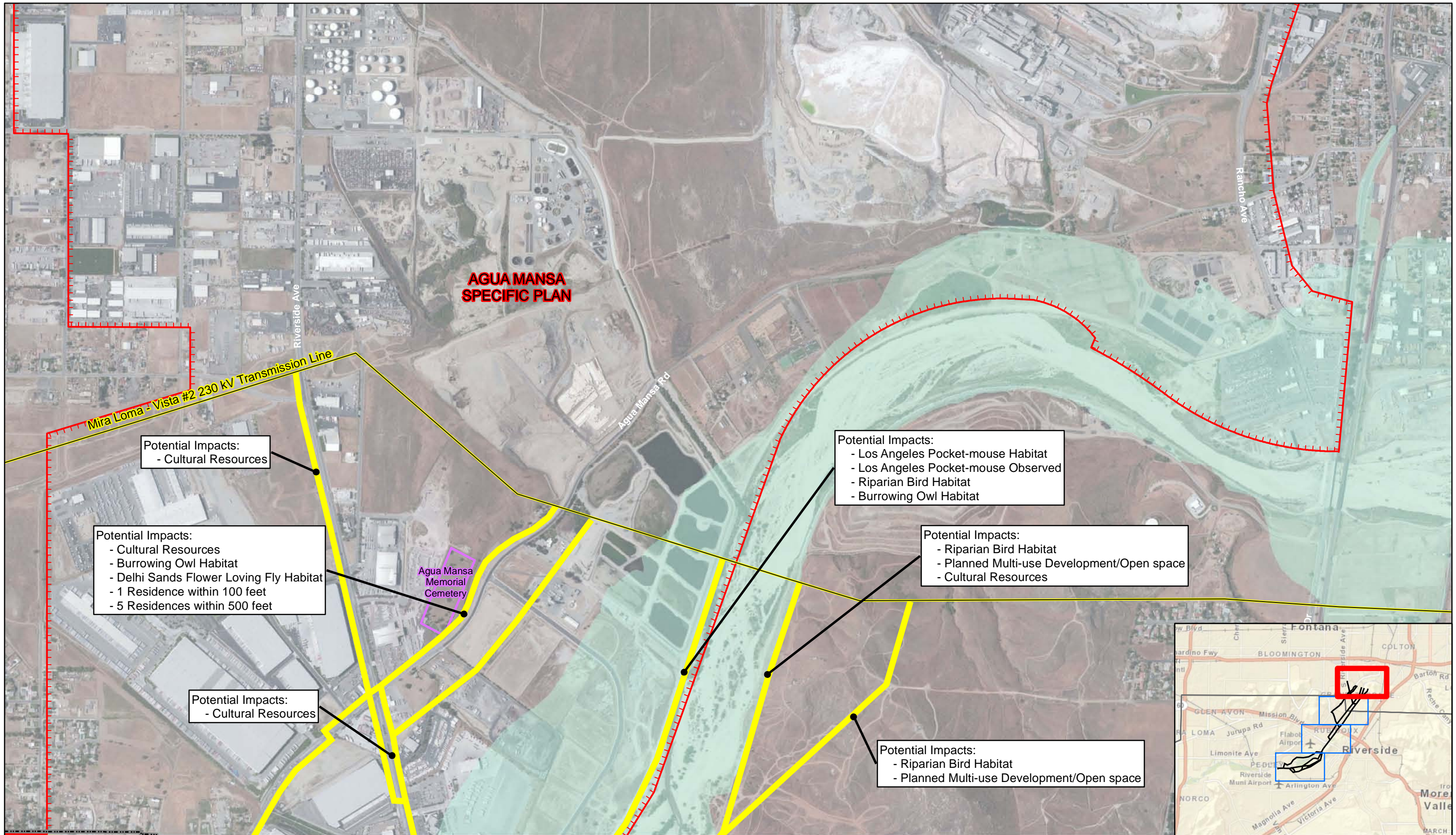


Legend	
	Potential Route Segment
	Specific Plan
	Proposed Substation
	Local Park
	MSHCP Criteria Cell
	100 year flood zone

Note:
 MSHCP = Multiple Species Habitat Conservation Plan
 LWCF = Land and Water Conservation Fund
 RCFCF = Riverside County Flood Control District

Riverside Transmission Reliability Project
 Eastern Route Environmental Constraints

Page 3 of 4



Potential Impacts:
- Cultural Resources

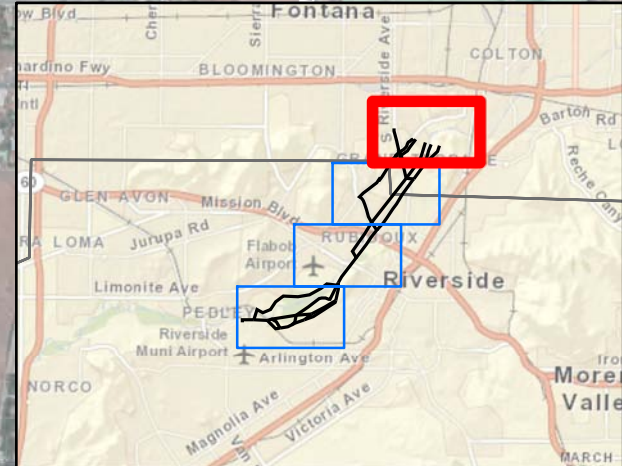
Potential Impacts:
- Cultural Resources
- Burrowing Owl Habitat
- Delhi Sands Flower Loving Fly Habitat
- 1 Residence within 100 feet
- 5 Residences within 500 feet

Potential Impacts:
- Cultural Resources

Potential Impacts:
- Los Angeles Pocket-mouse Habitat
- Los Angeles Pocket-mouse Observed
- Riparian Bird Habitat
- Burrowing Owl Habitat

Potential Impacts:
- Riparian Bird Habitat
- Planned Multi-use Development/Open space
- Cultural Resources

Potential Impacts:
- Riparian Bird Habitat
- Planned Multi-use Development/Open space



Legend	
	Potential Route Segment
	MSHCP Criteria Cell
	Specific Plan
	Proposed Substation
	Local Park
	100 year flood zone

Note:
MSHCP = Multiple Species Habitat Conservation Plan
LWCF = Land and Water Conservation Fund
RCFCD = Riverside County Flood Control District

Riverside Transmission Reliability Project
Eastern Route Environmental Constraints

Page 4 of 4