

# RIVERSIDE TRANSMISSION RELIABILITY PROJECT

PHOTO SIMULATION  
VIEWPOINT  
LOCATION MAP



# RIVERSIDE TRANSMISSION RELIABILITY PROJECT

## VIEWPOINT 4 GOOSE CREEK GOLF CLUB

DATE: 05/10/2017

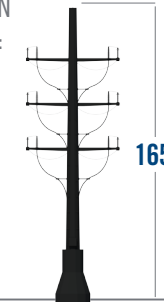
FOCAL LENGTH: 50.00MM

TIME: 12:29 PM

DIRECTION: SOUTHEAST

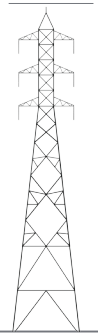
### PROPOSED STRUCTURES

TERMINATION STRUCTURE:



165'

TRANSMISSION TOWER (LATTICE):



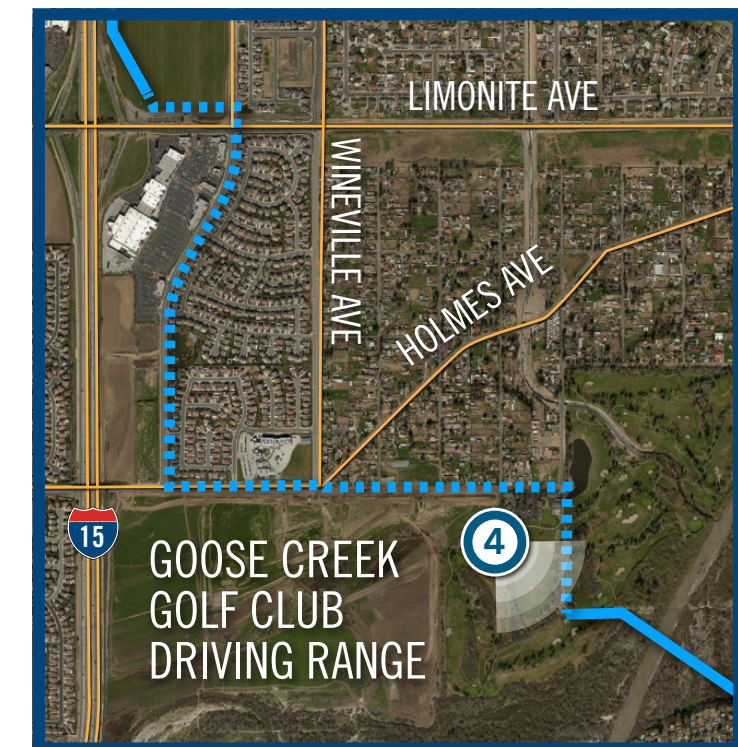
180'

EXISTING CONDITIONS



PROPOSED CONDITIONS

PHOTO SIMULATIONS ARE FOR DEMONSTRATIVE PURPOSES ONLY. FINAL DESIGN IS SUBJECT TO CHANGE PENDING PUBLIC, UTILITY, AND REGULATORY REVIEW.



— OVERHEAD TRANSMISSION LINE

④ VIEWPOINT LOCATION

... UNDERGROUND TRANSMISSION LINE OPTION



# RIVERSIDE TRANSMISSION RELIABILITY PROJECT

## VIEWPOINT 5

LIMONITE AVE - PAT'S RANCH RD

DATE: 05/10/2017

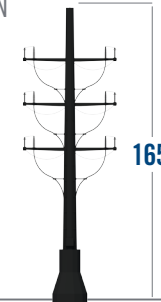
FOCAL LENGTH: 50.00MM

TIME: 12:45 PM

DIRECTION: WEST/NORTHWEST

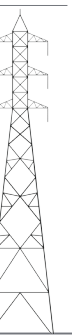
### PROPOSED STRUCTURES

TERMINATION STRUCTURE:



165'

TRANSMISSION TOWER (LATTICE):



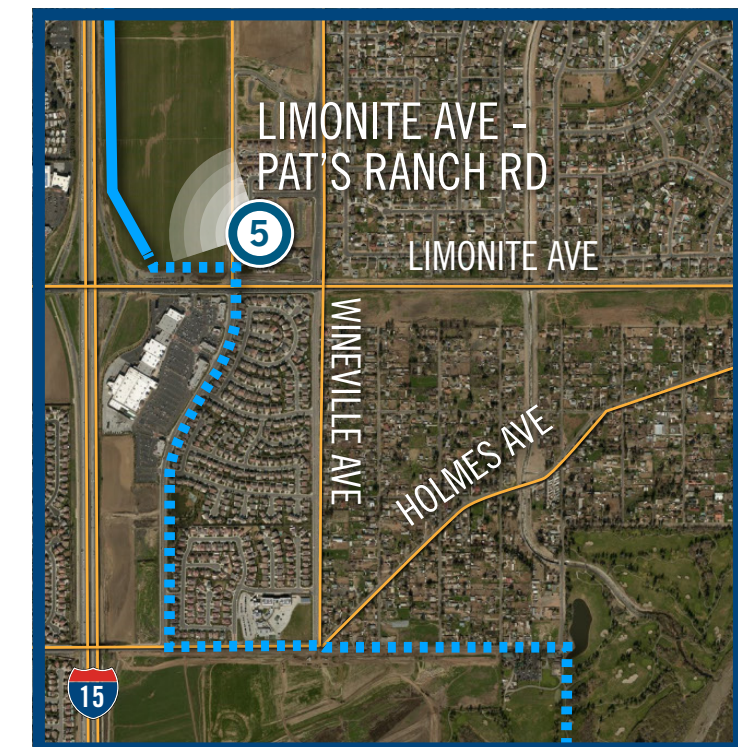
180'

EXISTING CONDITIONS



PROPOSED CONDITIONS

PHOTO SIMULATIONS ARE FOR DEMONSTRATIVE PURPOSES ONLY. FINAL DESIGN IS SUBJECT TO CHANGE PENDING PUBLIC, UTILITY, AND REGULATORY REVIEW.



— OVERHEAD TRANSMISSION LINE

⑤ VIEWPOINT LOCATION

- - - UNDERGROUND TRANSMISSION LINE OPTION

