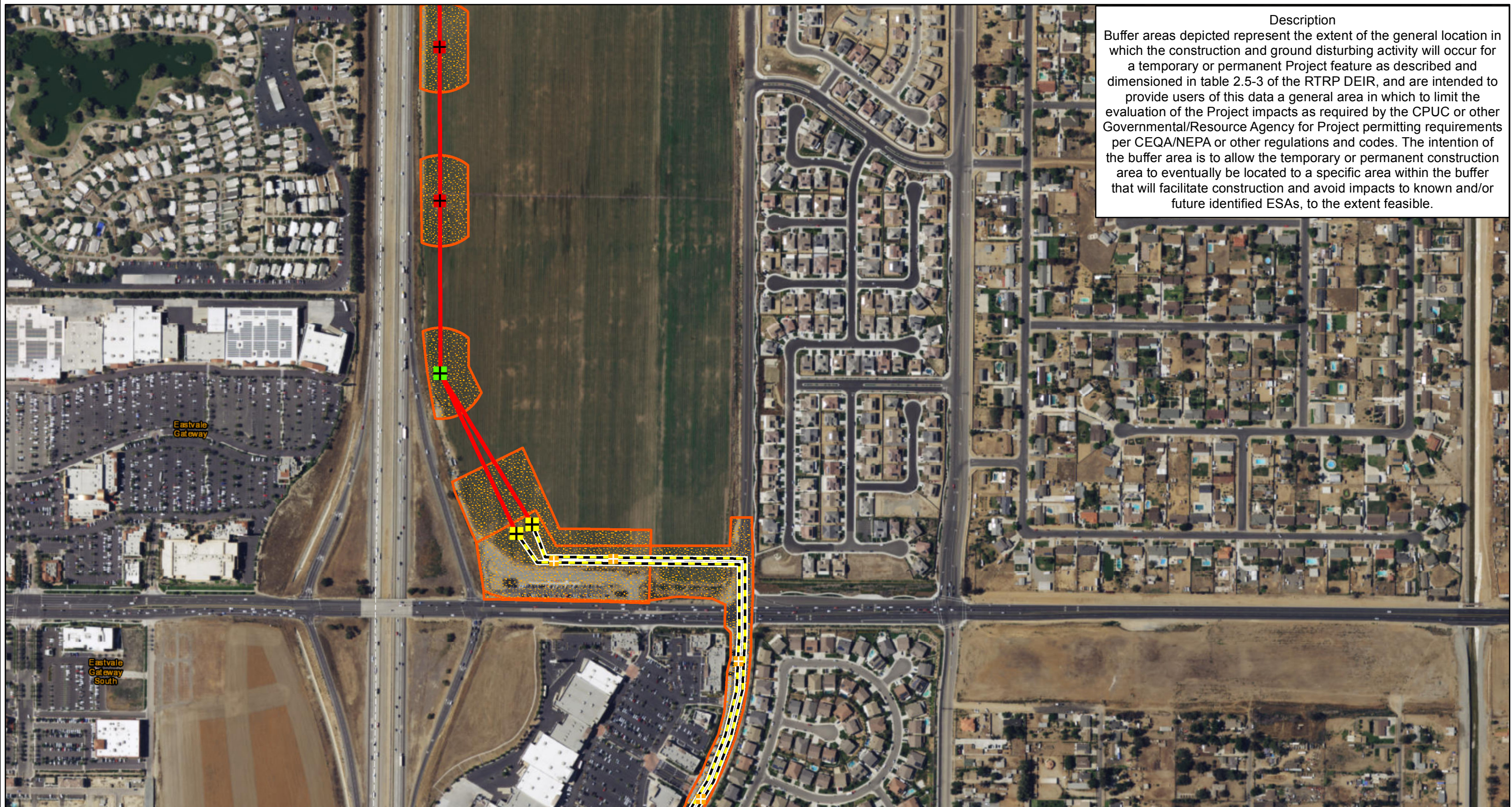


Path: P:\PROJECTS\MPO_P\Projects\Riverside\TransmissionReliability\Project_WLD\Data\CUPUC20170706_Data_Request_6\submitRTRP_CUPUC_DataRequest_6_UG_Alt_4.mxd

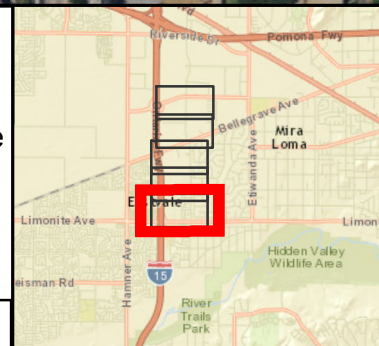


Description
 Buffer areas depicted represent the extent of the general location in which the construction and ground disturbing activity will occur for a temporary or permanent Project feature as described and dimensioned in table 2.5-3 of the RTRP DEIR, and are intended to provide users of this data a general area in which to limit the evaluation of the Project impacts as required by the CPUC or other Governmental/Resource Agency for Project permitting requirements per CEQA/NEPA or other regulations and codes. The intention of the buffer area is to allow the temporary or permanent construction area to eventually be located to a specific area within the buffer that will facilitate construction and avoid impacts to known and/or future identified ESAs, to the extent feasible.

Riverside Transmission Reliability Project
Alternative 4: Riser Pole Relocation Underground North

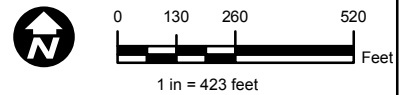
- | | |
|---|---|
| Alternative 4: Transmission Structures | Alternative 4: Riser Pole Relocation Underground North |
| Tubular Steel Pole (TSP) | OH |
| Lattice Steel Tower (LST) | UG |
| Riser pole (TSP) | Disturbance Area |
| Vault | Ground Disturbance Area Data (GDAD) Hybrid Route |
| Rack | Ground Disturbance Area Data (GDAD) Alternative 4 |

Use Limitations
 Buffer areas are tied directly to a temporary or permanent project feature, as identified per the Project's engineering design and construction description; the accuracy of this data is relative to the accuracy level of the engineering design. If the Project's engineering design is modified and/or updated and the project feature is relocated, the buffer and disturbance area to construct that feature will be relocated with it.

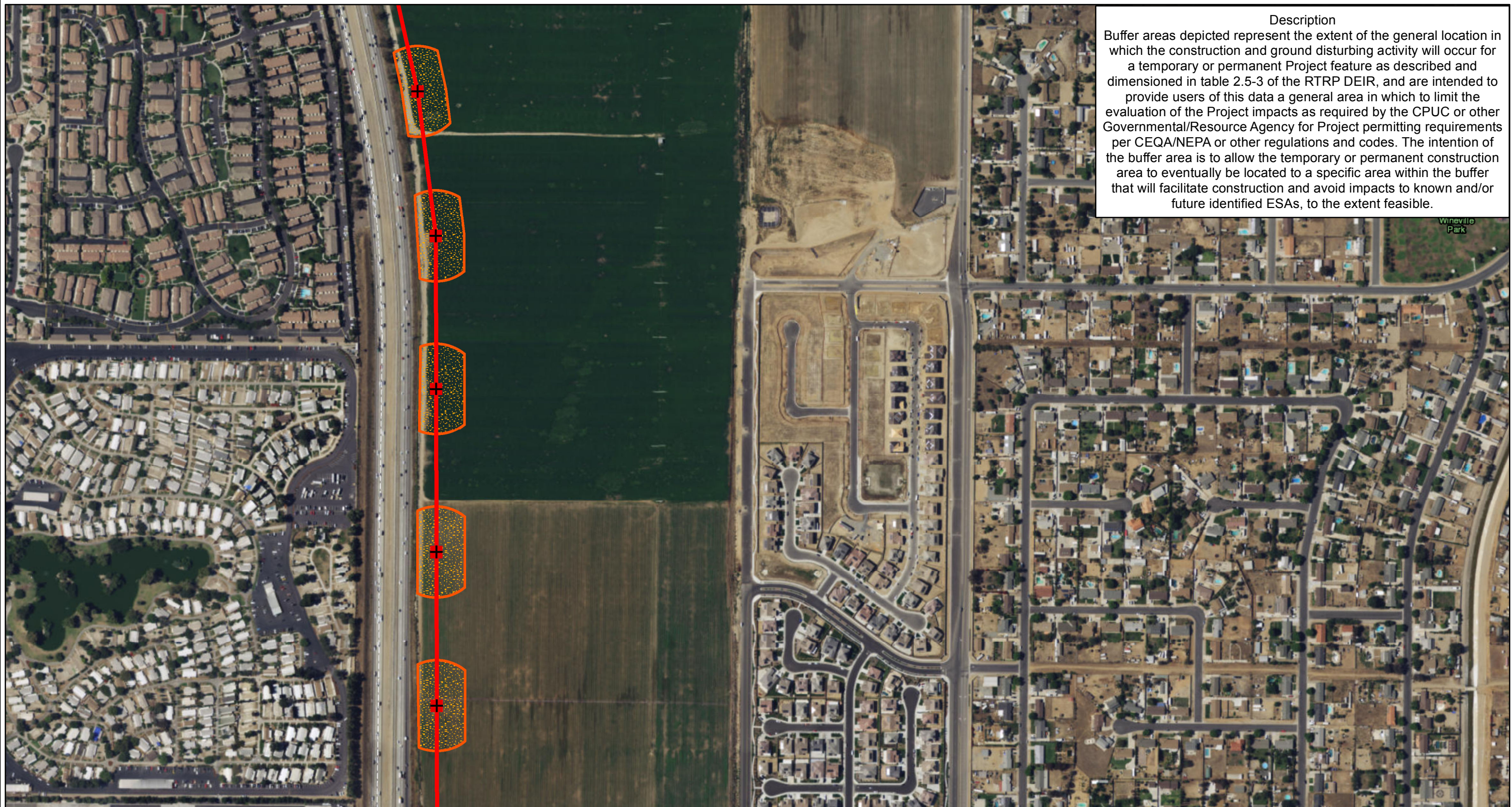


Date: 7/11/2017
 File Name:
 RTRP_CUPUC_DataRequest_6_UG_Alt_4.mxd

Features depicted herein are planning level accuracy, and intended for informational purposes only. Distances and locations may be distorted at this scale. Always consult with the proper legal documents or agencies regarding such features. Real Properties Department Thomas Bros. Maps is a registered trademark of Rand McNally & Company. Reproduced with permission granted by Rand McNally & Company. © Rand McNally & Company. All rights reserved.
 Service Layer Credits: Sources: Esri, HERE, DeLorme, USGS, Intermap, INCREMENT P, NRCan, Esri Japan, METI, Esri China (Hong Kong), Esri Korea, Esri (Thailand), MapmyIndia, NGCC, © OpenStreetMap contributors, and the GIS User Community
 Source: Esri, DigitalGlobe, GeoEye, Earthstar Geographics, CNES/Airbus DS, USDA, USGS, AeroGRID, IGN, and the GIS User



Path: P:\PROJECTS\MPO_Projects\Riverside\TransmissionReliabilityProject_WLDData\CPUCC20170706_Data_Request_6\submit\RTRP_CUPUC_DataRequest_6_UG_Alt_4.mxd



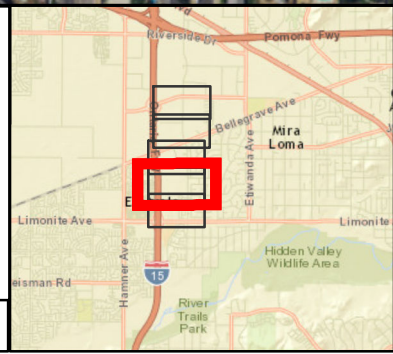
Description
 Buffer areas depicted represent the extent of the general location in which the construction and ground disturbing activity will occur for a temporary or permanent Project feature as described and dimensioned in table 2.5-3 of the RTRP DEIR, and are intended to provide users of this data a general area in which to limit the evaluation of the Project impacts as required by the CPUC or other Governmental/Resource Agency for Project permitting requirements per CEQA/NEPA or other regulations and codes. The intention of the buffer area is to allow the temporary or permanent construction area to eventually be located to a specific area within the buffer that will facilitate construction and avoid impacts to known and/or future identified ESAs, to the extent feasible.

Riverside Transmission Reliability Project

Alternative 4: Riser Pole Relocation Underground North

Alternative 4: Transmission Structures		Alternative 4: Riser Pole Relocation Underground North	
	Tubular Steel Pole (TSP)		OH
	Lattice Steel Tower (LST)		UG
	Riser pole (TSP)	Disturbance Area	
	Vault		Ground Disturbance Area Data (GDAD) Hybrid Route
	Rack		Ground Disturbance Area Data (GDAD) Alternative 4

Use Limitations
 Buffer areas are tied directly to a temporary or permanent project feature, as identified per the Project's engineering design and construction description; the accuracy of this data is relative to the accuracy level of the engineering design. If the Project's engineering design is modified and/or updated and the project feature is relocated, the buffer and disturbance area to construct that feature will be relocated with it.

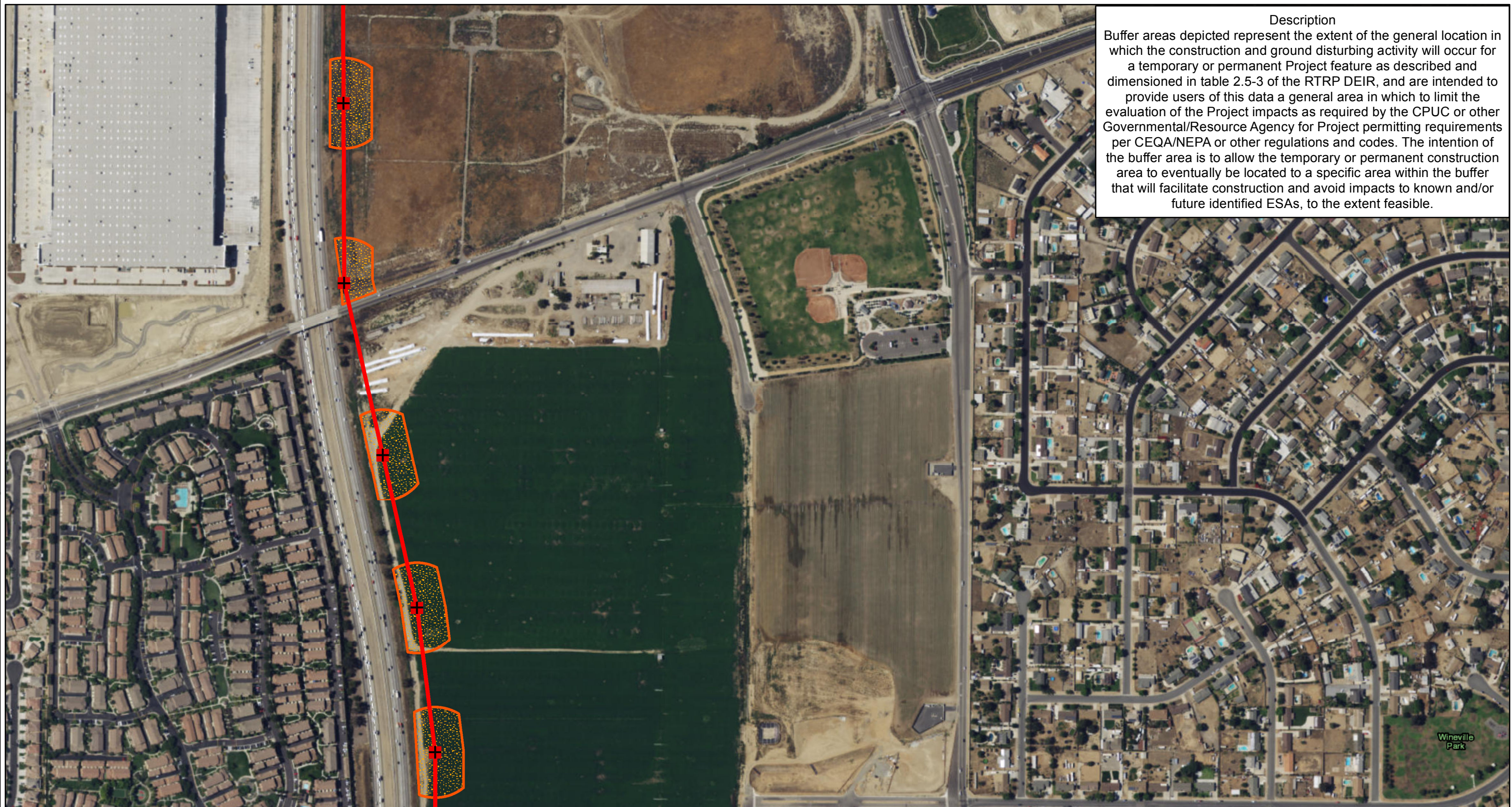


Date: 7/11/2017
 File Name:
 RTRP_CUPUC_DataRequest_6_UG_Alt_4.mxd

Features depicted herein are planning level accuracy, and intended for informational purposes only. Distances and locations may be distorted at this scale. Always consult with the proper legal documents or agencies regarding such features. Real Properties Department Thomas Bros. Maps is a registered trademark of Rand McNally & Company. Reproduced with permission granted by Rand McNally & Company. © Rand McNally & Company. All rights reserved. Service Layer Credits: Sources: Esri, HERE, DeLorme, USGS, Intermap, INCREMENT P, NRCan, Esri Japan, METI, Esri China (Hong Kong), Esri Korea, Esri (Thailand), MapmyIndia, NGCC, © OpenStreetMap contributors, and the GIS User Community Source: Esri, DigitalGlobe, GeoEye, Earthstar, Geographics, CNES/Airbus DS, USDA, USGS, AeroGRID, IGN, and the GIS User



Path: P:\PROJECTS\MPO_P\Projects\Riverside\TransmissionReliability\Project_WLD\Map\CPUCC20170706_Data_Request_6\submitRTRP_CUPUC_DataRequest_6_UG_Alt_4.mxd

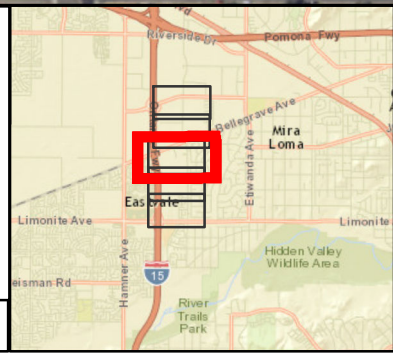


Description
 Buffer areas depicted represent the extent of the general location in which the construction and ground disturbing activity will occur for a temporary or permanent Project feature as described and dimensioned in table 2.5-3 of the RTRP DEIR, and are intended to provide users of this data a general area in which to limit the evaluation of the Project impacts as required by the CPUC or other Governmental/Resource Agency for Project permitting requirements per CEQA/NEPA or other regulations and codes. The intention of the buffer area is to allow the temporary or permanent construction area to eventually be located to a specific area within the buffer that will facilitate construction and avoid impacts to known and/or future identified ESAs, to the extent feasible.

Riverside Transmission Reliability Project
Alternative 4: Riser Pole Relocation Underground North

- | | |
|---|---|
| Alternative 4: Transmission Structures | Alternative 4: Riser Pole Relocation Underground North |
| Tubular Steel Pole (TSP) | OH |
| Lattice Steel Tower (LST) | UG |
| Riser pole (TSP) | Disturbance Area |
| Vault | Ground Disturbance Area Data (GDAD) Hybrid Route |
| Rack | Ground Disturbance Area Data (GDAD) Alternative 4 |

Use Limitations
 Buffer areas are tied directly to a temporary or permanent project feature, as identified per the Project's engineering design and construction description; the accuracy of this data is relative to the accuracy level of the engineering design. If the Project's engineering design is modified and/or updated and the project feature is relocated, the buffer and disturbance area to construct that feature will be relocated with it.

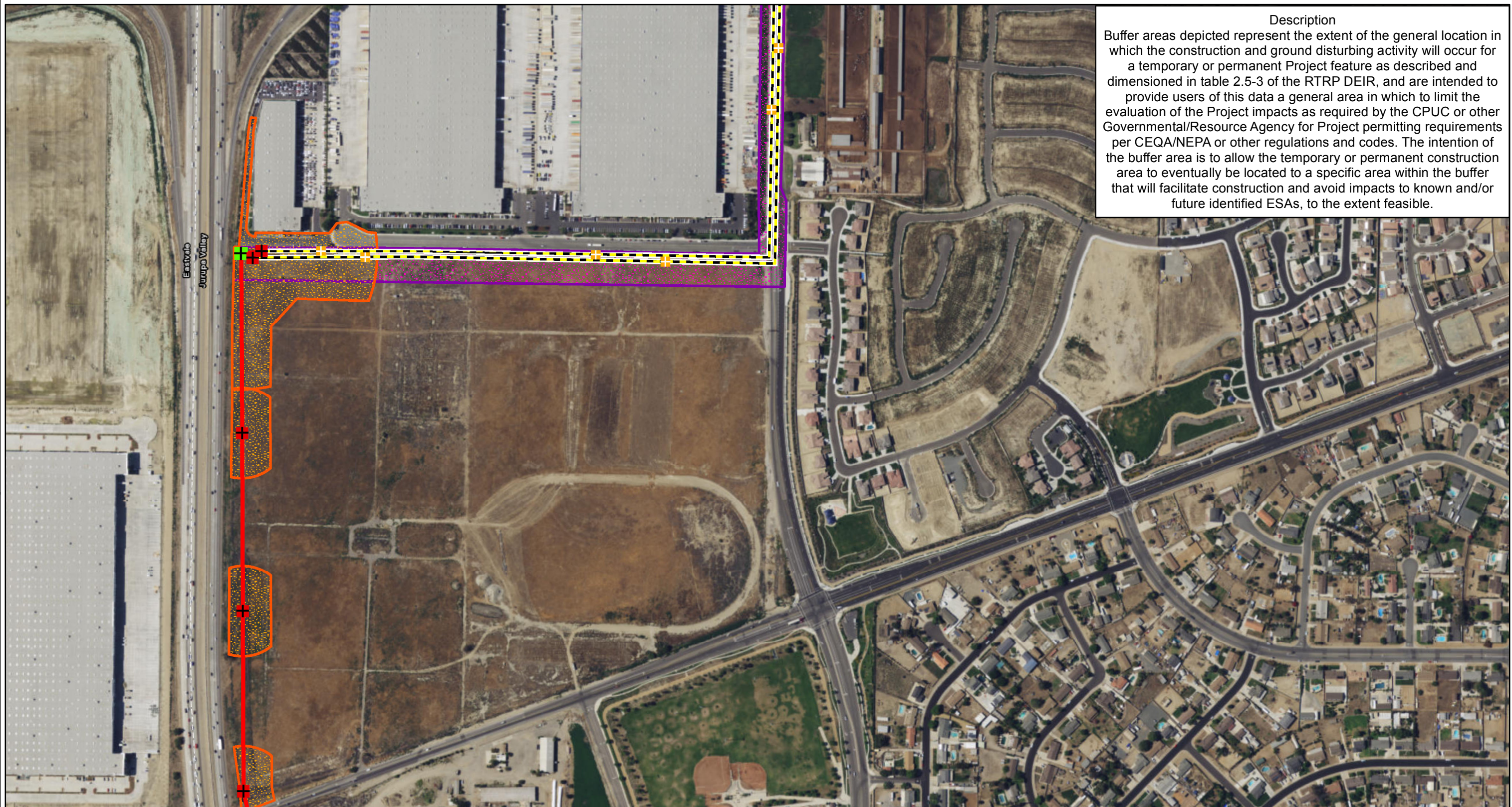


Date: 7/11/2017
 File Name:
 RTRP_CUPUC_DataRequest_6_UG_Alt_4.mxd

Features depicted herein are planning level accuracy, and intended for informational purposes only. Distances and locations may be distorted at this scale. Always consult with the proper legal documents or agencies regarding such features. Real Properties Department Thomas Bros. Maps is a registered trademark of Rand McNally & Company. Reproduced with permission granted by Rand McNally & Company. © Rand McNally & Company. All rights reserved. Service Layer Credits: Sources: Esri, HERE, DeLorme, USGS, Intermap, INCREMENT P, NRCan, Esri Japan, METI, Esri China (Hong Kong), Esri Korea, Esri (Thailand), MapmyIndia, NGCC, © OpenStreetMap contributors, and the GIS User Community Source: Esri, DigitalGlobe, GeoEye, Earthstar Geographics, CNES/Airbus DS, USDA, USGS, AeroGRID, IGN, and the GIS User



Path: P:\PROJECTS\MPO_P\Projects\Riverside\TransmissionReliability\Project_WLD\Map\CPUCC20170706_Data_Request_6\submitRTRP_CUPUC_DataRequest_6_UG_Alt_4.mxd



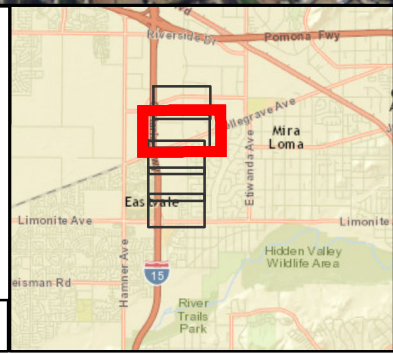
Description
 Buffer areas depicted represent the extent of the general location in which the construction and ground disturbing activity will occur for a temporary or permanent Project feature as described and dimensioned in table 2.5-3 of the RTRP DEIR, and are intended to provide users of this data a general area in which to limit the evaluation of the Project impacts as required by the CPUC or other Governmental/Resource Agency for Project permitting requirements per CEQA/NEPA or other regulations and codes. The intention of the buffer area is to allow the temporary or permanent construction area to eventually be located to a specific area within the buffer that will facilitate construction and avoid impacts to known and/or future identified ESAs, to the extent feasible.

Riverside Transmission Reliability Project

Alternative 4: Riser Pole Relocation Underground North

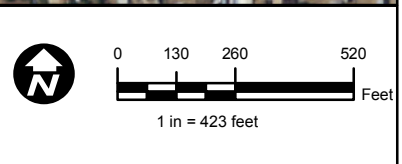
- | | |
|---|---|
| Alternative 4: Transmission Structures | Alternative 4: Riser Pole Relocation Underground North |
| Tubular Steel Pole (TSP) | OH |
| Lattice Steel Tower (LST) | UG |
| Riser pole (TSP) | Disturbance Area |
| Vault | Ground Disturbance Area Data (GDAD) Hybrid Route |
| Rack | Ground Disturbance Area Data (GDAD) Alternative 4 |

Use Limitations
 Buffer areas are tied directly to a temporary or permanent project feature, as identified per the Project's engineering design and construction description; the accuracy of this data is relative to the accuracy level of the engineering design. If the Project's engineering design is modified and/or updated and the project feature is relocated, the buffer and disturbance area to construct that feature will be relocated with it.



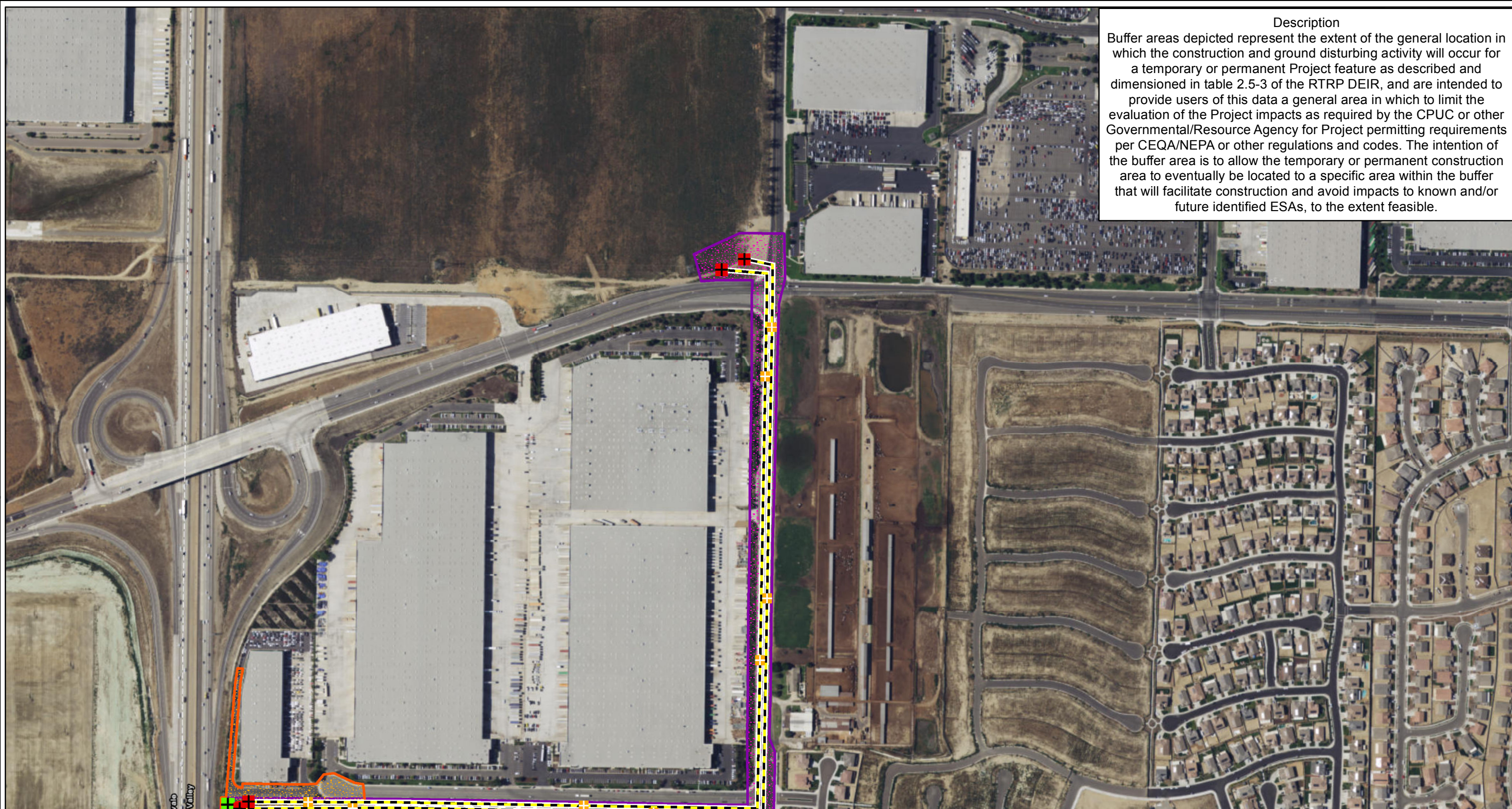
Date: 7/11/2017
 File Name:
 RTRP_CUPUC_DataRequest_6_UG_Alt_4.mxd

Features depicted herein are planning level accuracy, and intended for informational purposes only. Distances and locations may be distorted at this scale. Always consult with the proper legal documents or agencies regarding such features. Real Properties Department Thomas Bros. Maps is a registered trademark of Rand McNally & Company. Reproduced with permission granted by Rand McNally & Company. © Rand McNally & Company. All rights reserved.
 Service Layer Credits: Sources: Esri, HERE, DeLorme, USGS, Intermap, INCREMENT P, NRCan, Esri Japan, METI, Esri China (Hong Kong), Esri Korea, Esri (Thailand), MapmyIndia, NGCC, © OpenStreetMap contributors, and the GIS User Community
 Source: Esri, DigitalGlobe, GeoEye, Earthstar Geographics, CNES/Airbus DS, USDA, USGS, AeroGRID, IGN, and the GIS User



Path: P:\PROJECTS\MPO_P\Projects\Riverside\TransmissionReliability\Project_WLD\Map\CPUCC20170706_Data_Request_6\submitRTRP_CUPUC_DataRequest_6_UG_Alt_4.mxd

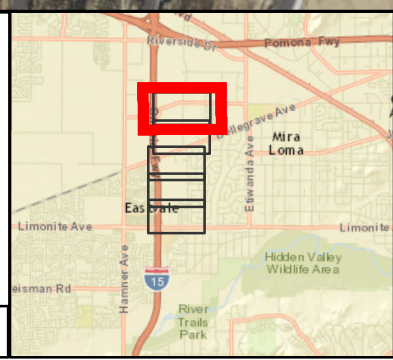
Description
 Buffer areas depicted represent the extent of the general location in which the construction and ground disturbing activity will occur for a temporary or permanent Project feature as described and dimensioned in table 2.5-3 of the RTRP DEIR, and are intended to provide users of this data a general area in which to limit the evaluation of the Project impacts as required by the CPUC or other Governmental/Resource Agency for Project permitting requirements per CEQA/NEPA or other regulations and codes. The intention of the buffer area is to allow the temporary or permanent construction area to eventually be located to a specific area within the buffer that will facilitate construction and avoid impacts to known and/or future identified ESAs, to the extent feasible.



Riverside Transmission Reliability Project
Alternative 4: Riser Pole Relocation Underground North

- | | |
|---|---|
| Alternative 4: Transmission Structures | Alternative 4: Riser Pole Relocation Underground North |
| Tubular Steel Pole (TSP) | OH |
| Lattice Steel Tower (LST) | UG |
| Riser pole (TSP) | Disturbance Area |
| Vault | Ground Disturbance Area Data (GDAD) Hybrid Route |
| Rack | Ground Disturbance Area Data (GDAD) Alternative 4 |

Use Limitations
 Buffer areas are tied directly to a temporary or permanent project feature, as identified per the Project's engineering design and construction description; the accuracy of this data is relative to the accuracy level of the engineering design. If the Project's engineering design is modified and/or updated and the project feature is relocated, the buffer and disturbance area to construct that feature will be relocated with it.



Date: 7/11/2017
 File Name:
 RTRP_CUPUC_DataRequest_6_UG_Alt_4.mxd

Features depicted herein are planning level accuracy, and intended for informational purposes only. Distances and locations may be distorted at this scale. Always consult with the proper legal documents or agencies regarding such features. Real Properties Department Thomas Bros. Maps is a registered trademark of Rand McNally & Company. Reproduced with permission granted by Rand McNally & Company. © Rand McNally & Company. All rights reserved.
 Service Layer Credits: Sources: Esri, HERE, DeLorme, USGS, Intermap, INCREMENT P, NRCan, Esri Japan, METI, Esri China (Hong Kong), Esri Korea, Esri (Thailand), MapmyIndia, NGCC, © OpenStreetMap contributors, and the GIS User Community
 Source: Esri, DigitalGlobe, GeoEye, Earthstar Geographics, CNES/Airbus DS, USDA, USGS, AeroGRID, IGN, and the GIS User

