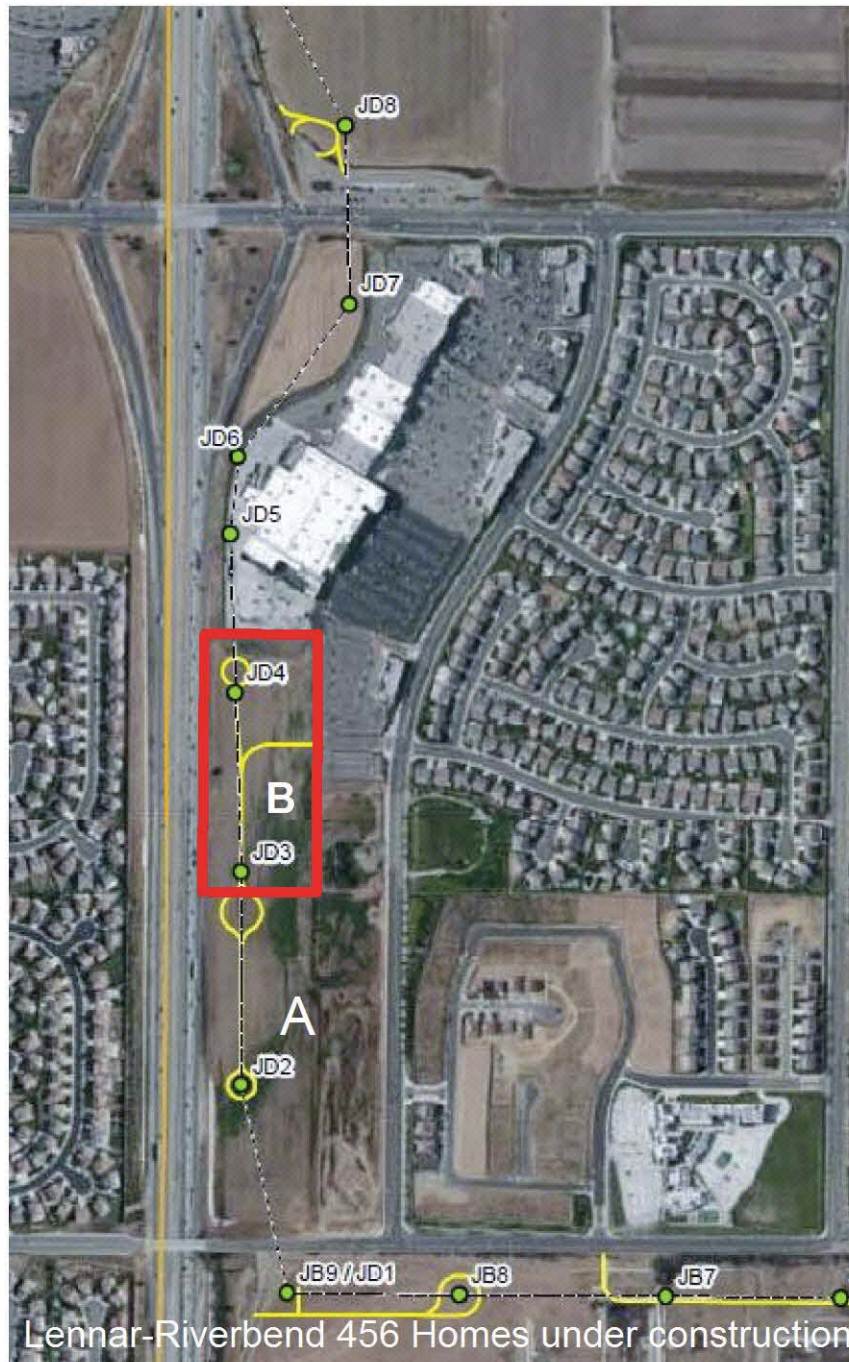


EXHIBIT H

EXHIBIT H

Vernola Marketplace Apartment Community - Phase B



#17 - SCE Transmission Line Right of Way Constraints and Guidelines

- The minimum centerline radius on all road curves shall be 50 feet measured at the centerline of the drivable road surface. The minimum drivable width of all roads shall be increased on curves by a distance equal to $400/\text{Radius of curvature}$,

