

PUBLIC UTILITIES COMMISSION

505 VAN NESS AVENUE
SAN FRANCISCO, CA 94102-3298



To: State Clearinghouse, Responsible and Trustee Agencies, Property Owners, and Interested Parties

From: Jensen Uchida, Environmental Project Manager

Subject: NOTICE OF PREPARATION OF AN ENVIRONMENTAL IMPACT REPORT AND SCOPING MEETING: Riverside Transmission Reliability Project (A.15-04-013)

Date: January 25, 2017

Introduction

Southern California Edison (SCE) filed an application (A.15-04-013) on April 15, 2015 with the California Public Utilities Commission (CPUC) for a Certificate of Public Convenience and Necessity (CPCN) to construct and operate the 230-kV transmission line and 230-kV substation components of the Riverside Transmission Reliability Project (RTRP). The RTRP would provide energy to the Riverside Public Utilities (RPU) local electrical distribution system. The City of Riverside prepared an Environmental Impact Report (EIR) (State Clearinghouse No. 2007011113) for the RTRP in 2013, including SCE's proposed 230-kV transmission line and substation. The City of Riverside certified the RTRP EIR on February 5, 2013.

After the City of Riverside's decision to certify the EIR and approve the project, the City of Jurupa Valley approved residential and commercial developments within the RTRP alignment studied in the RTRP EIR. These developments are in various stages of construction. The new developments prompted SCE and several developers to enter into discussions seeking to resolve specific areas of conflict along the RTRP alignment. In September 2016, SCE reached a settlement agreement with Lennar of California, Inc. (Lennar) and Vernola Trust (Vernola) that includes modifications to the SCE proposed 230-kV transmission line to avoid conflicts with the Lennar Riverbend Community and Vernola Marketplace Apartment Community developments. These changes to the project were not considered in the EIR that was certified by the City of Riverside.

The CPUC, as the next-in-line permitting agency, has determined that a Subsequent EIR is necessary under CEQA (CEQA Guidelines Section 15162) to analyze potential impacts that may result from SCE's proposed changes in the RTRP location and design. The RTRP EIR is adequate to address the SCE elements of the RTRP that have not changed from those analyzed in the 2013 EIR.

This Notice of Preparation (NOP) is being sent to interested agencies and members of the public to inform the recipients that the CPUC is beginning preparation of a Subsequent EIR for the RTRP and to request comments from the public regarding the scope and content of the environmental document. This notice includes a description of the changes to the RTRP, a summary of environmental impacts, and information on how to provide comments to the CPUC.

Project Location

The project would be located in Riverside County within the cities of Jurupa Valley, Norco, and Riverside. The project area is bordered to the north by State Route 60 and SCE's existing Mira Loma – Vista transmission lines, and to the west by Interstate 15.

Project Description

SCE's application includes the following project elements as described in the 2013 Final EIR:

- 230-kV Transmission Line
- Wildlife Substation
- Relocated Distribution Lines
- Telecommunication Facilities
- Modifications to Existing Substation

Modifications to the 230-kV transmission line to avoid impacts from developments in the proposed project ROW would include the following four elements and will be analyzed in the Subsequent EIR. These elements will be referred to in the Subsequent EIR as the "revised project" and are noted on Figure 1 included with this notice. The revised project includes:

1. Construction of approximately 2 miles of 230-kV underground double-circuit duct bank, which was previously proposed as overhead transmission line. The underground duct bank would be constructed primarily within streets in the City of Jurupa Valley.
2. Refinements to the proposed overhead 230-kV transmission line and route to avoid conflicts with housing developments along Wineville Avenue.
3. Relocation of existing overhead distribution lines to underground duct banks or a different overhead location in four locations to accommodate the new 230-kV transmission line.
4. Temporary use of two marshalling yards to store construction materials during construction.

RTRP and Circle City Projects

SCE proposed to construct additional infrastructure projects near the RTRP vicinity. In addition to the RTRP, SCE submitted an application to the CPUC for the Circle City Substation and Mira Loma-Jefferson 66-kV Subtransmission Line Project (Circle City Project). The Circle City Project would be constructed in the cities of Corona, Eastvale, Norco, Chino, and Ontario. The public has commented on the Circle City Project application and questioned whether the Circle City Project and RTRP should be combined. The Circle City Project and RTRP are wholly separate projects, with independent utility, serving different populations and electrical needs areas. The RTRP will serve the needs of the City of Riverside's municipal utility, RPU, and its customers, and the Circle City Project will serve the needs of SCE and its customers within Corona, Norco, and the surrounding area of unincorporated Riverside County. The Circle City Project does not serve the City of Riverside, whose residents are served by RPU.

Analysis of Potential Environmental Effects

The CPUC will prepare a Subsequent EIR to evaluate new potentially significant environmental effects of the revised project that may occur as a result of changes to the project after certification of the 2013 RTRP EIR. The Subsequent EIR will also contain mitigation measures to reduce effects determined to be significant. The Subsequent EIR will contain only the information necessary to document impacts from changes in the project from the 2013 RTRP EIR (CEQA Guidelines 15163[b]). The 2013 RTRP EIR will be used by the CPUC to consider the effects of the unchanged project elements.

The CPUC prepared an Initial Study Checklist using preliminary analysis of the revised project and documents submitted by SCE and other parties to the CPUC's CPCN proceeding. The Initial Study Checklist is available on the CPUC project website:

<http://www.cpuc.ca.gov/environment/info/panoramaenv/RTRP/index.html>

The CPUC finds that additional impacts are not likely to occur beyond those analyzed in the 2013 RTRP EIR for many resource topics. The project changes would not require additional analysis for the environmental topics listed below:

- Agriculture and Forestry Resources
- Geology and Soils
- Mineral Resources
- Population and Housing
- Public Services
- Utilities and Service Systems
- Energy Conservation

The environmental review in the Subsequent EIR will focus on the topics listed below and will address impacts not addressed in the original RTRP EIR:

- Aesthetics
- Air Quality
- Greenhouse Gas Emissions
- Biological Resources
- Cultural and Paleontological Resources
- Hazards and Hazardous Materials
- Hydrology and Water Quality
- Land Use and Planning
- Noise
- Recreation
- Transportation and Traffic
- Tribal Cultural Resources

Mitigation Measures. The RTRP EIR included mitigation measures that were designed to avoid, reduce, or eliminate potential impacts of the RTRP. The Subsequent EIR will contain an evaluation of the effectiveness of these measures in reducing impacts that would result from the revised project. Additional mitigation measures may be developed to reduce impacts of the revised project to levels below significance. The CPUC would require SCE to implement a mitigation monitoring program if the project or an alternative is approved.

Public Scoping Meeting

The CPUC will conduct a public Scoping Meeting in the project area, at the location, date, and time shown in Table 1. The purpose of the scoping meeting is to present information about the revised project and the CPUC’s decision-making processes, and to listen to the views of the public on the range of issues to be considered in the scope and content of the Subsequent EIR. A court reporter will be present to record all verbal comments made at the scoping meeting.

Table 1: Public Scoping Meeting	
Location/Address	Date & Times
Jurupa Valley High School Auditorium 10551 Bellegrave Ave Jurupa Valley, CA 91752	Wednesday February 8, 2017 Open House: 6 p.m. Brief Presentation: 6:30 p.m. Verbal Comments: 7:00 p.m. to 8:00 p.m.

Scoping Comments

All written comments for the CPUC’s CEQA scoping period must be received by February 24, 2017.

You can submit comments in several ways:

- (1) U.S. mail to: Jensen Uchida (CPUC Project Manager)
California Public Utilities Commission
c/o Panorama Environmental, Inc.
One Embarcadero Center, Suite 740
San Francisco, CA 94111
- (2) E-mail (riversidetrp@panoramaenv.com)
- (3) Fax (650-373-1211)
- (4) Attending a Public Scoping Meeting (see time and location in Table 1) and making a verbal statement or submitting a written comment at the scoping meeting.

Individual respondents may request confidentiality. If you wish to withhold your name or street address from public review, you must state this prominently at the beginning of your written comment. Such requests will be honored to the extent allowed by law. The CPUC will not consider anonymous comments. All submissions from organizations and businesses, and from individuals identifying themselves as representatives or officials of organizations or businesses, will be available for public inspection in their entirety.

For Additional Project Information

Internet Website – Information about this application and the environmental review process will be posted on the Internet at <http://www.cpuc.ca.gov/Environment/info/panoramaenv/RTRP/index.html>

This site will be used to post all public documents during the environmental review process and to announce upcoming public meetings. In addition, a copy of SCE's application may be found at this site, and the Draft Subsequent EIR will be posted at the site after it is published.

Issuance of Notice of Preparation

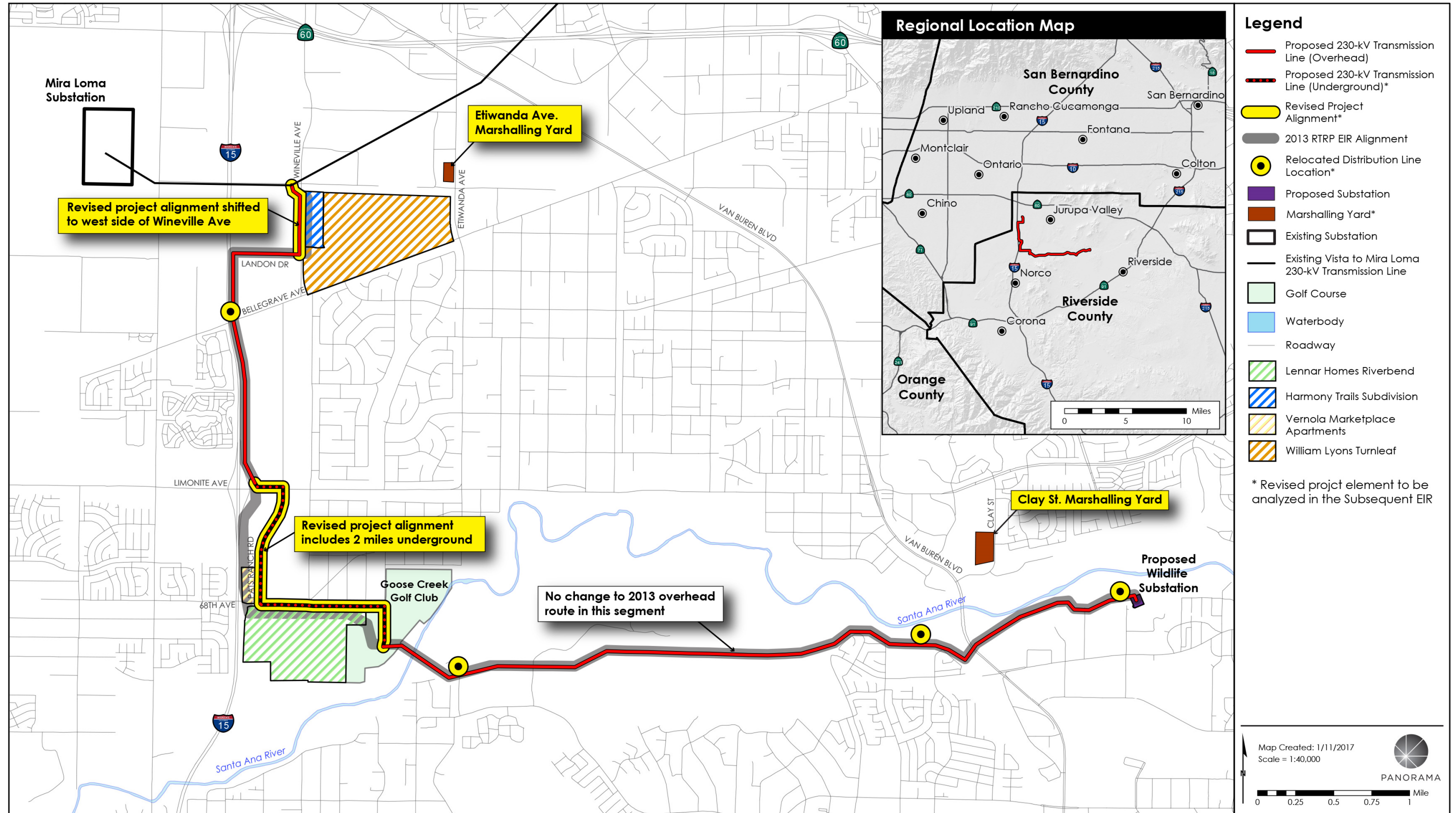
The California Public Utilities Commission hereby issues this Notice of Preparation of a Subsequent Environmental Impact Report.



Jensen Uchida
Project Manager
Energy Division, CEQA Unit

Date: January 25, 2017

Figure 1 Proposed Project Overview



Sources: (ESRI 2016), (Southern California Edison 2016)

This page is intentionally left blank.