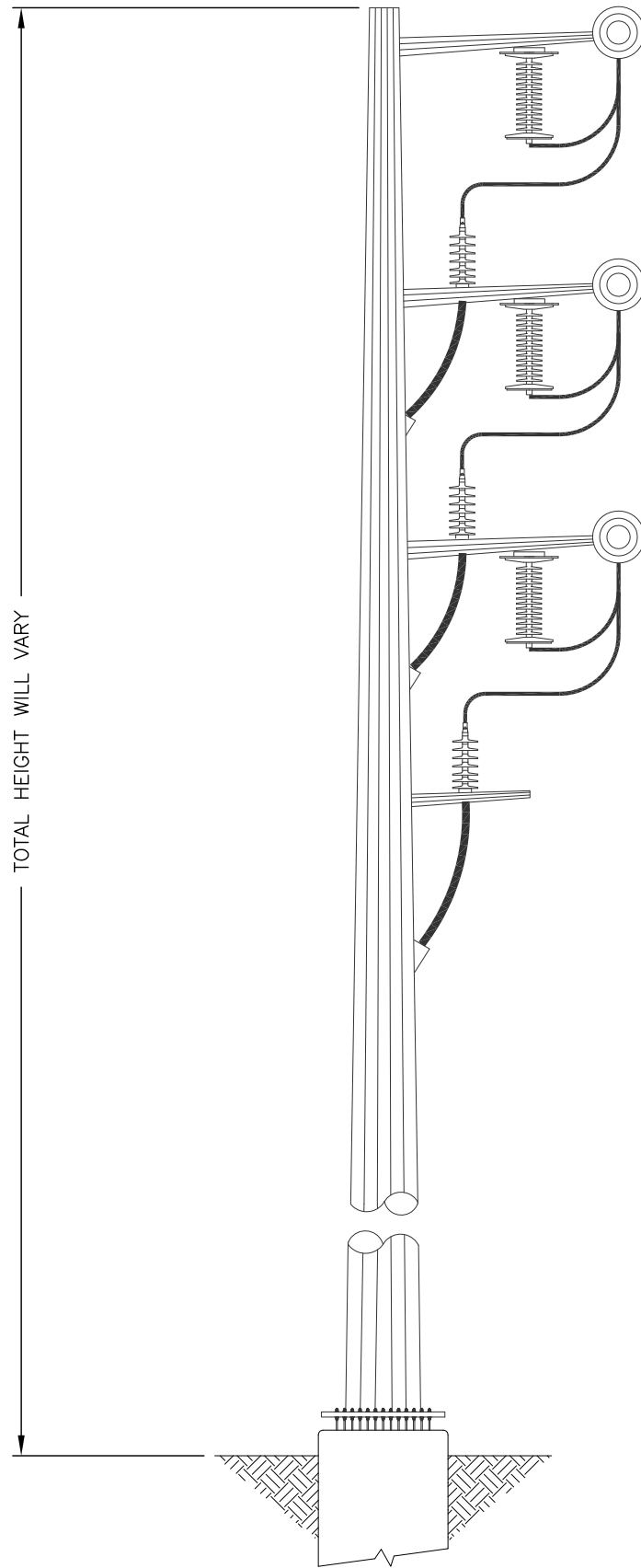
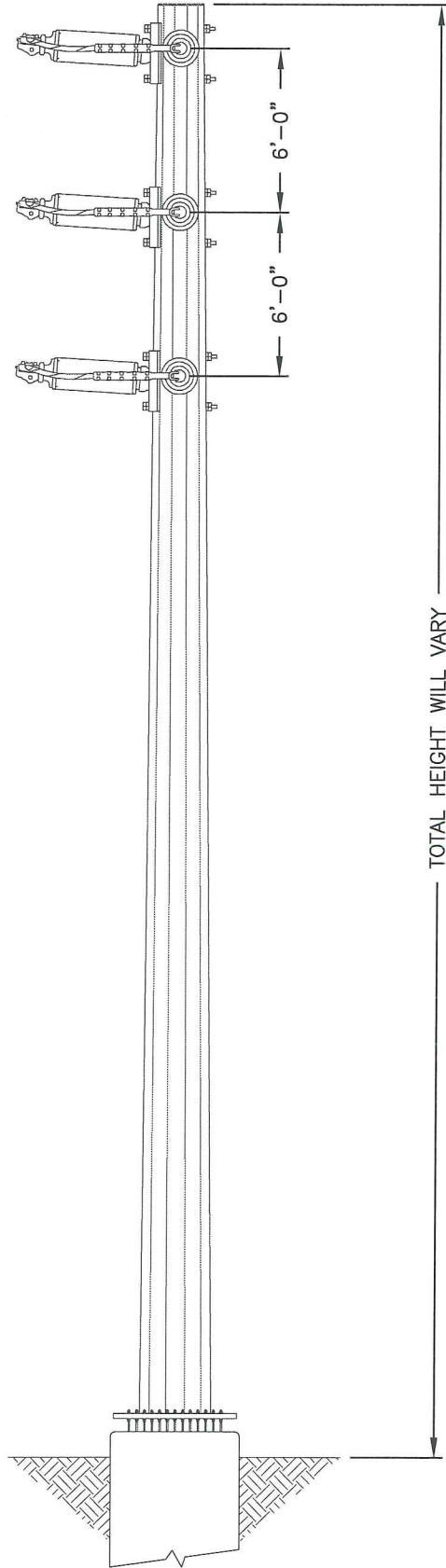


APPENDIX 3-A
TECHNICAL FIGURES FOR
SALT CREEK SUBSTATION PROPONENT'S
ENVIRONMENTAL ASSESSMENT (PEA)

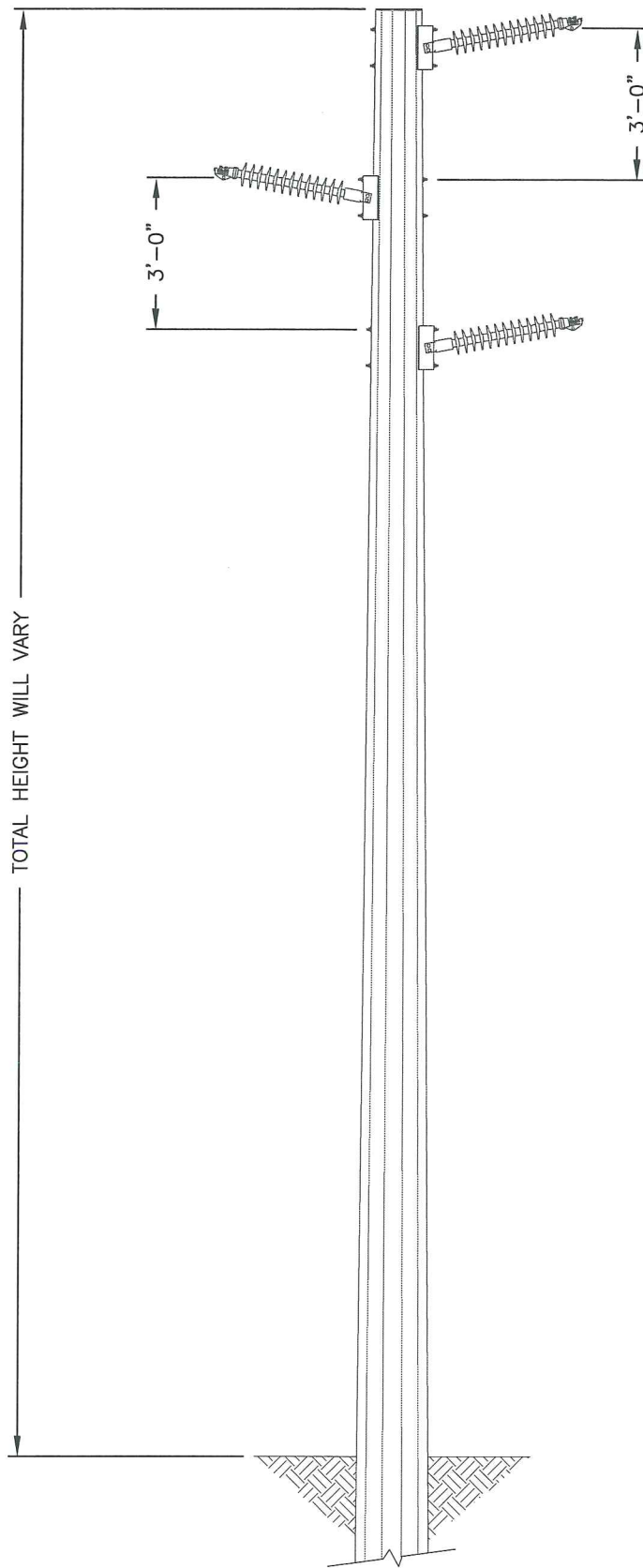
Prepared by
San Diego Gas & Electric Company
8315 Century Park Court
San Diego, CA 92123

August 2013



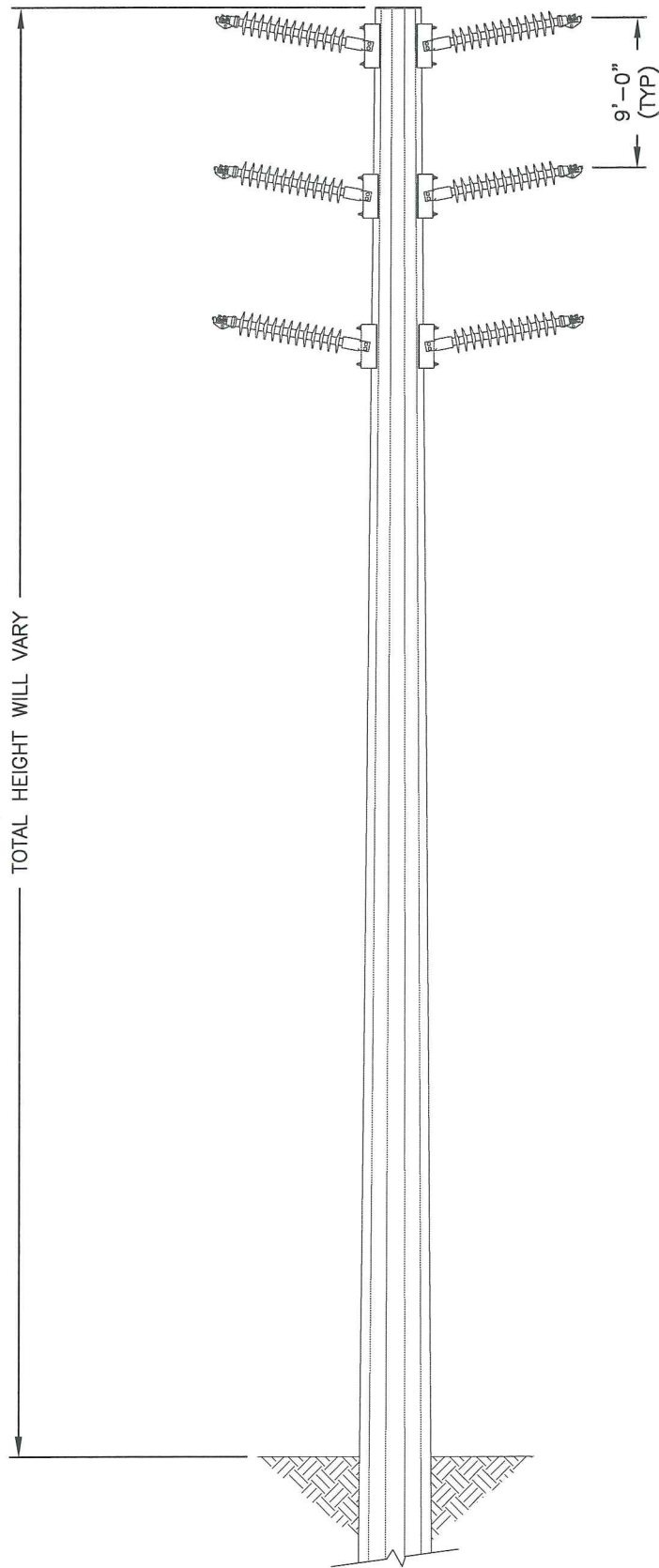


TYPICAL SINGLE-CIRCUIT ENGINEERED
FOUNDATION POLE (69kV) – N.T.S.

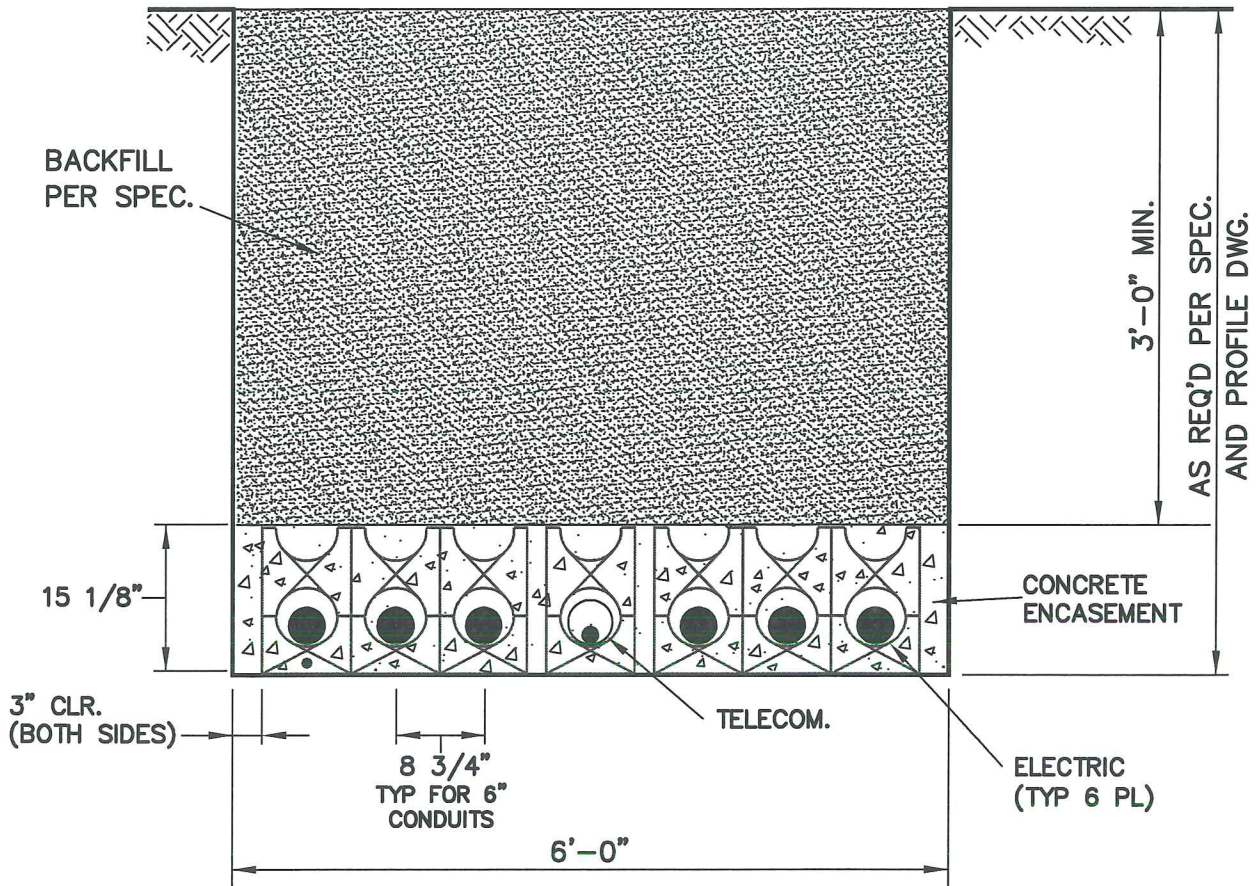


TYPICAL DIRECTLY EMBEDDED
SINGLE-CIRCUIT POLE (69kV) – N.T.S.

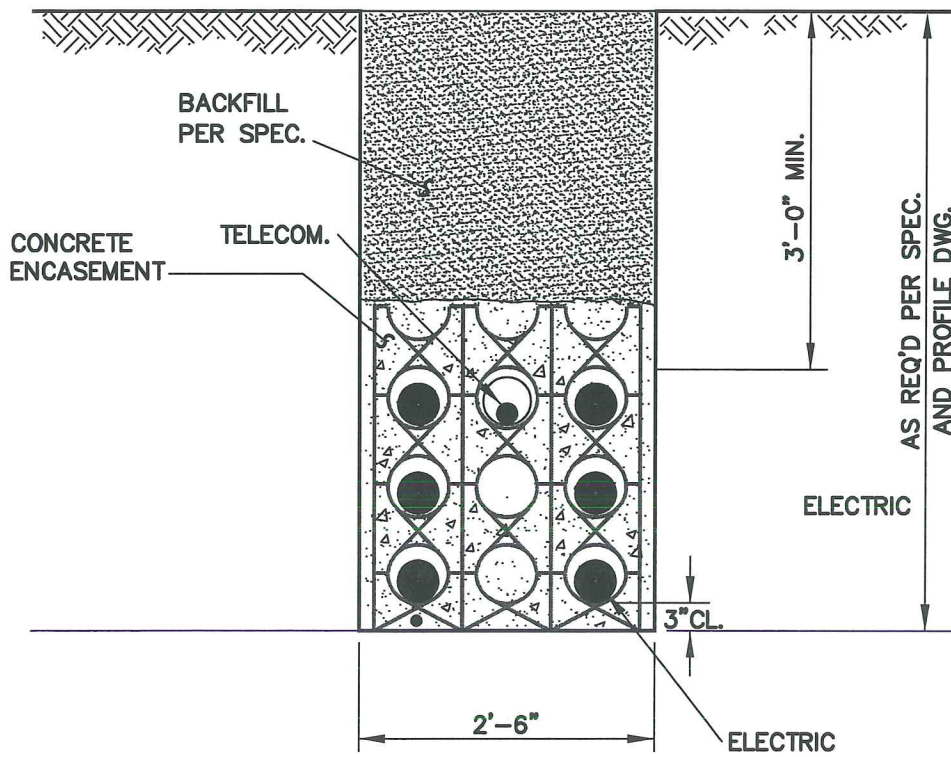




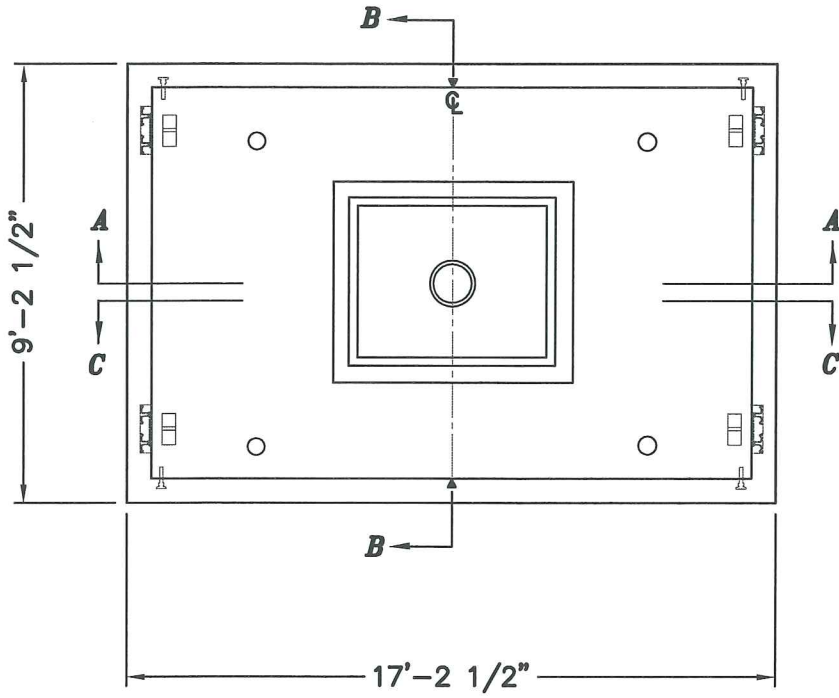
TYPICAL DIRECTLY EMBEDDED
DOUBLE-CIRCUIT POLE (69kV) – N.T.S.



TYPICAL UNDERGROUND DUCT BANK
HORIZONTAL CONFIGURATION (69kV) - N.T.S.

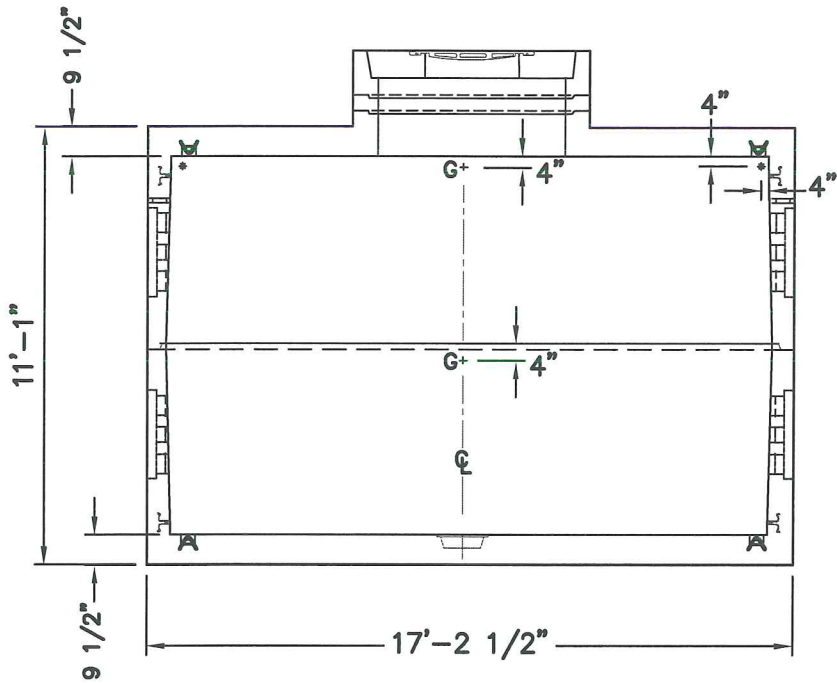


TYPICAL UNDERGROUND DUCT BANK
 VERTICAL CONFIGURATION (69kV) – N.T.S.

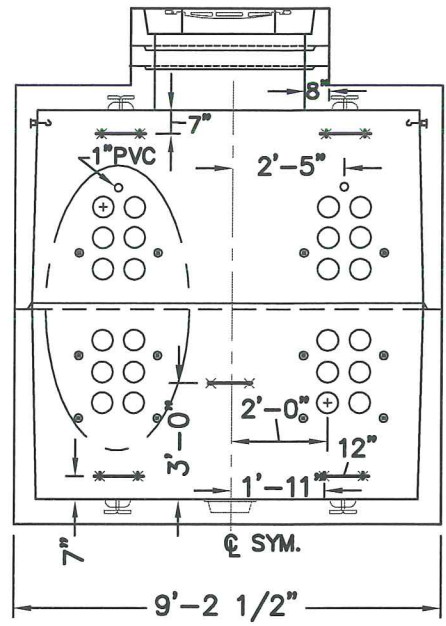


PLAN

APPROXIMATE WEIGHTS
 BASE-38,000 LBS.
 TOP-36,000 LBS.



SECTION A-A
 (OPPOSITE SIDEWALL IDENTICAL)



SECTION B-B
 (OPPOSITE ENDWALL IDENTICAL)

