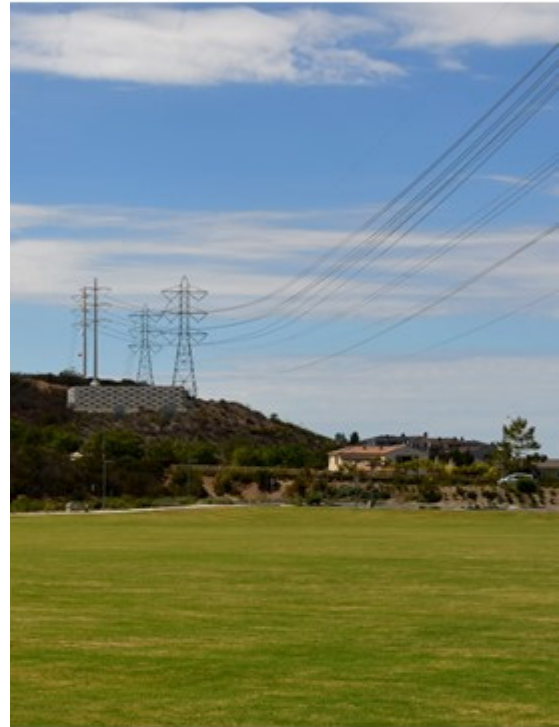


California Public
Utilities Commission
SYCAMORE-PEÑASQUITOS
230-KV TRANSMISSION
LINE PROJECT
Final Environmental
Impact Report

State Clearinghouse No. 2014081031

**VOLUME II: Modified Draft Environmental
Impact Report
Executive Summary – 4.6 Hydrology
and Water Resources**

MARCH 2016



PANORAMA
ENVIRONMENTAL, INC.

California Public Utilities Commission
**SYCAMORE-PEÑASQUITOS 230-KV
TRANSMISSION LINE PROJECT**
Final Environmental Impact Report
State Clearinghouse No. 2014081031

**VOLUME II: Modified Draft Environmental Impact Report
Executive Summary – 4.6 Hydrology and Water Resources**

MARCH 2016

Prepared for:

California Public Utilities Commission
505 Van Ness Avenue
San Francisco, CA 94102

Prepared by:

Panorama Environmental, Inc.
One Embarcadero Center, Suite 740
San Francisco, CA 94111
650-373-1200
laurie.hietter@panoramaenv.com

PANORAMA
ENVIRONMENTAL, INC.

One Embarcadero Center, Suite 740 San Francisco, CA 94111 650-373-1200 www.panoramaenv.com

TABLE OF CONTENTS

VOLUME II

Acronyms and Abbreviations

Glossary

ES	Executive Summary	ES-1
ES.1	Introduction	ES-1
ES.1.1	CPUC Conclusion Regarding Environmentally Superior Alternative	ES-1
ES.1.2	No Project Alternative	ES-3
ES.1.3	Contents of the Draft EIR.....	ES-3
ES.2	Background and Description of Proposed Project	ES-4
ES.2.1	Project Background	ES-4
ES.2.2	Project Location and Right Of Way	ES-4
ES.2.3	Proposed Project	ES-5
ES.3	Proposed Project Objectives	ES-7
ES.3.1	SDG&E's Project Objectives	ES-7
ES.3.2	California Public Utilities Commission Project Objectives	ES-7
ES.4	Summary of Public Involvement Activities	ES-9
ES.4.1	Scoping Process	ES-9
ES.4.2	Areas of Controversy/Public Scoping Issues	ES-10
ES.5	Project Alternatives.....	ES-11
ES.5.1	CEQA Requirements for Selection of Alternatives	ES-11
ES.5.2	Alternatives Fully Evaluated in The EIR	ES-12
ES.5.3	Alternatives Eliminated from Further Consideration	ES- 18 <u>20</u>
ES.5.4	No Project Alternative	ES- 19 <u>20</u>
ES.6	Summary of Impacts	ES- 20 <u>23</u>
ES.6.1	Introduction.....	ES- 20 <u>23</u>
ES.6.2	Biological Resources	ES- 25 <u>24</u>
ES.6.3	Aesthetics	ES- 27 <u>26</u>
ES.6.4	Cultural Resources	ES- 29 <u>28</u>
ES.6.5	Paleontological Resources	ES-30
ES.6.6	Geology, Soils, and Mineral Resources	ES- 32 <u>31</u>
ES.6.7	Hydrology and Water Resources	ES- 34 <u>33</u>
ES.6.8	Transportation and Traffic	ES- 36 <u>35</u>
ES.6.9	Noise	ES- 38 <u>37</u>

TABLE OF CONTENTS

ES.6.10	Land Use and Planning	ES- 4039
ES.6.11	Recreation.....	ES- 4039
ES.6.12	Hazards and Hazardous Materials.....	ES- 4241
ESs.6.13	Fires and Fuels Management	ES- 4443
ES.6.14	Air Quality	ES- 4645
ES.6.15	Greenhouse Gases	ES- 4847
ES.6.16	Agriculture and Forestry Resources.....	ES-49
ES.6.17	Population and Housing.....	ES- 5150
ES.6.18	Utilities and Public Service Systems.....	ES- 5150
ES.7	Cumulative Impacts.....	ES- 5352
ES.7.1	Cumulative Impacts	ES- 5352
ES.7.2	Cumulative Project Mission—Peñasquitos 230-KV Transmission Line	ES-53
ES.7.3	Summary of Cumulative Impacts	ES- 5453
ES.8	Comparison of the Proposed Project and Alternatives.....	ES- 6160
ES.8.1	Methodology for Alternatives Comparison	ES- 6160
ES.8.2	Identify Environmentally Superior Alternative	ES- 6261
ES.8.3	Comparison of Proposed Project and the Alternatives	ES- 6362
ES.8.4	Conclusion of the Environmentally Superior Alternative.....	ES- 6867
ES.9	Comparison of The Proposed Project wth the No Project Alternative.....	ES-68
ES.9.1	Summary of Impacts.....	ES-68
ES.9.2	Conclusion.....	ES-69
ES.10	Impact Summary and Mitigation Table	ES-69
1	Introduction	1-1
1.1	Overview of the Proposed Project.....	1-1
1.1.1	Project Location	1-1
1.1.2	Project Summary	1-1
1.1.3	SDG&E's Project Objectives	1-4
1.1.4	California Public Utilities Commission Project Objectives	1-4
1.1.5	Electrical System and Loading.....	1-6
1.2	Environmental Review Process	1-8
1.2.1	CEQA Process and Lead Agency	1-8
1.2.2	Environmental Analysis	1-9
1.3	Agency Use of this Document	1-9
1.3.1	California Public Utilities Commission Process.....	1-9
1.3.2	State Trustee and Responsible Agencies	1-10
1.3.3	Federal Agencies	1-10
1.3.4	Required Permits and Approvals	1-10
1.4	Public Review and Comment.....	1-12

TABLE OF CONTENTS

1.4.1	Scoping.....	1-12
1.4.2	How to Comments on the Draft EIR	1-15
1.5	Reader's Guide to this Draft EIR.....	1-15
1.5.1	CEQA Process and Lead Agency	1-15
1.6	References.....	1-17
2	Project Description.....	2-1
2.1	Introduction	2-1
2.1.1	Existing Transmission Infrastructure	2-1
2.2	Proposed Project Components	2-2
2.2.1	Right-of-Way Requirements.....	2-12
2.2.2	Description of Components	2-12
2.2.3	Transmission Line Segment A: Sycamore Canyon Substation to Carmel Valley Road	2-20
2.2.4	Transmission Line Segment B: Carmel Valley Road	2-27
2.2.5	Transmission Line Segment C: Carmel Valley Road to Peñasquitos Junction.....	2-29
2.2.6	Transmission Line Segment D: Peñasquitos Junction to Peñasquitos Substation.....	2-32
2.2.7	Substation and Other Modifications	2-35
2.3	Construction Activities and Procedures.....	2-35
2.3.1	Safety and Environmental Awareness Program.....	2-35
2.3.2	Summary of Land Disturbance	2-36
2.3.3	Temporary Work Areas	2-36 <u>37</u>
2.3.4	Access Roads	2-45 <u>44</u>
2.3.5	Overhead Transmission.....	2-46
2.3.6	Underground Transmission	2-50 <u>49</u>
2.3.7	Substations and Encina Hub.....	2-51
2.3.8	Helicopter Use Plan.....	2-53 <u>52</u>
2.3.9	Water Use	2-56
2.3.10	Traffic Management.....	2-57 <u>56</u>
2.3.11	Site Cleanup and Waste Disposal	2-58 <u>57</u>
2.3.12	Workforce and Equipment	2-60
2.3.13	Construction Schedule.....	2-70
2.4	Operation and Maintenance	2-71
2.4.1	Aboveground Facilities (Transmission Line Segments A, C, and D; Substations)	2-71
2.4.2	Underground Facilities (Transmission Line Segment B)	2-72
2.4.3	Substations.....	2-72
2.5	Applicant Proposed Measures	2-73

TABLE OF CONTENTS

2.5.1 Applicant Proposed Measures..... 2-73

2.6 Electric and Magnetic Fields..... 2-85

2.6.1 Overview 2-85

2.6.2 Defining Electric and Magnetic Fields 2-85

2.6.3 Scientific Background and Regulations Applicable to EMF..... 2-87

2.6.4 Policies, Standards, and Regulations 2-91

2.6.5 EMF Data Applicable to the Proposed Project 2-93

2.6.6 SDG&E's Proposed EMF Mitigation 2-95

2.6.7 EMF Data Applicable to Alternatives..... 2-97

2.7 References..... ~~2-97~~98

3 Alternatives..... 3-1

3.1 Introduction 3-1

3.2 Alternatives Development and Screening Process..... 3-1

3.2.1 California Environmental Quality Act Requirements 3-2

3.3 Alternatives Screening Methodology 3-3

3.3.1 Consistency with Project Objectives..... 3-3

3.3.2 Feasibility..... 3-5

3.3.3 Potential to Eliminate Significant Environmental Effects 3-7

3.3.4 Public Utilities Code Considerations for Alternatives 3-7

3.4 Summary of Alternatives Considered 3-8

3.5 Alternatives Retained for EIR Analysis 3-17

3.5.1 Alternative 1: Eastern Cable Pole Option 1b at Carmel Valley Road (SDG&E Application; CPUC)..... 3-17

3.5.2 Alternative 2a and 2b: Eastern Cable Pole at Pole P40 and Underground Alignment through City Open Space or City Water Utility Service Road (CPUC) 3-20

3.5.3 Alternative 3: Los Peñasquitos Canyon Preserve-Mercy Road Underground (Sunrise Powerlink EIR/EIS) 3-21

3.5.4 Alternative 4: Segment D 69-kV Partial Underground Alignment (Public Scoping) 3-27

3.5.5 Alternative 5: Pomerado Road to Miramar Area North Combination Underground/Overhead (Sunrise Powerlink EIR/EIS) 3-33

3.5.6 No Project Alternative ~~3-33~~

3.6 Alternatives Eliminated from Full EIR Analysis..... ~~3-46~~48

3.6.1 Alternative 1a: Eastern Cable Pole Option at Carmel Valley Road (SDG&E Application) ~~3-46~~48

3.6.2 Alternative 6: Eastern Cable Pole Option 2 (SDG&E Application) ~~3-47~~49

3.6.3 Alternative 7: Western Cable Pole Alternative (SDG&E Application).... ~~3-47~~49

3.6.4 Alternative 8: Segment A Pole Relocations (CPUC) ~~3-49~~51

TABLE OF CONTENTS

3.6.5 Alternative 9: Segment D Pole Relocations South of Existing Line (Public Scoping; CPUC).....3-~~49~~51

3.6.6 Alternative 4b: Segment D 230-kV Partial Underground Alignment (Public Comments on the Draft EIR)..... 3-53

3.6.7 Alternative 4c: Segment D 69-kV and 230-kV Partial Underground Alignment (Public Comments on Draft EIR) 3-53

3.6.8 Alternative 10: Northern Alignment Number 1 (SDG&E Application/PEA)3-~~51~~54

3.6.~~79~~ Alternative 11: Northern Alignment Number 2 (SDG&E Application/PEA)3-~~51~~57

3.6.~~810~~ Alternative 12: Northern Alignment Number 3 (SDG&E Application/PEA)3-~~52~~57

3.6.~~911~~ Alternative 13: Northern Alignment Number 4 (SDG&E Application/PEA)3-~~55~~58

3.6.~~1012~~ Alternative 14: Southern Alignment Number 5 (SDG&E Application/PEA)3-~~56~~59

3.6.~~1113~~ Alternative 15: Southern Alignment Number 6 (SDG&E Application/PEA)3-~~56~~60

3.6.~~1214~~ Alternative 16: Underground Alignment Number 7 (SDG&E Application/PEA) 3-~~57~~61

3.6.~~1315~~ Alternative 17: Stonebridge—Mira Mesa Alignment (CPUC) 3-~~58~~61

3.6.~~1418~~ Alternative 18: Los Rosas—Park Village Alignment (CPUC) 3-~~59~~62

3.6.~~1719~~ Alternative 19: Sunrise Coastal Link Alignment (Sunrise Powerlink EIR/EIS)3-~~59~~62

3.6.~~1618~~ Alternative 20: Pomerado Road to Miramar Area North-Combination Underground/Overhead Alternative (Sunrise Powerlink EIR/EIS) 3-~~59~~63

3.6.~~1719~~ Alternative 21: Mannix—Dormouse Road Alternative (Sunrise Powerlink EIR/EIS) 3-~~60~~63

3.6.~~1820~~ Alternative 22: SDG&E Segment 13 Scripps Ranch Alternative (Sunrise Powerlink EIR/EIS) 3-~~61~~64

3.6.~~1921~~ Alternative 23: MCAS Miramar-Underground/Overhead Alternative (Sunrise Powerlink EIR/EIS) 3-~~61~~64

3.6.~~2022~~ Alternative 24: MCAS Miramar-Combination Underground/Overhead Alternative (Sunrise Powerlink EIR/EIS) 3-~~62~~65

3.6.~~2123~~ Alternative 25: Rancho Peñasquitos Boulevard Bike Path Alternative .. 3-~~62~~66

3.6.~~2224~~ Alternative 26: State Route 56 Alternative (Sunrise Powerlink EIR/EIS) ... 3-~~63~~66

3.6.~~2325~~ Alternative 27: Milepost 146.5 to Peñasquitos Substation Underground/Consolidation Alternative (Sunrise Powerlink EIR/EIS) 3-~~63~~66

3.6.~~2426~~ Alternative 28: Scripps Poway Parkway to State Route 56 Alternative (Sunrise Powerlink EIR/EIS) 3-~~63~~67

3.6.~~2527~~ Alternative 29: Scripps Poway Parkway—Pomerado Road Underground Alternative (Sunrise Powerlink EIR/EIS) 3-~~64~~67

3.6.~~2628~~ Alternative 30: CAISO-Approved Mission—Peñasquitos 230-kV Transmission Line (CAISO; ORA) 3-~~64~~68

3.6.~~2729~~ Alternative 31: CAISO-Approved Mission—Peñasquitos 230-kV Transmission Line and New Sycamore—Mission 230-kV Transmission Line (CPUC)..... 3-~~67~~70

3.6.~~2830~~ Alternative 32: Loop-in of a Single Mission—San Luis Rey 230-kV Transmission Line into Peñasquitos Substation (CPUC) 3-~~67~~72

TABLE OF CONTENTS

3.6.~~2931~~ Alternative 33: Loop-in of Both Mission—San Luis Rey 230-kV Lines into Peñasquitos Substation (CPUC) 3-~~6973~~

3.6.~~3032~~ Alternative 34: New Sycamore—Mission 230-kV Transmission Line and Loop-in of One Mission—San Luis Rey 230-kV Line into Peñasquitos Substation (CPUC)..... 3-~~7073~~

3.6.~~3133~~ Alternative 35: New Mission—Peñasquitos 230-kV Line and Reconfigured and Reconductored Power Lines (ORA) 3-~~7174~~

3.6.~~3234~~ Alternative 36: New Mission—Peñasquitos 230-kV Reconductored Poway—Pomerado Line and Series Reactor (ORA)..... 3-~~7275~~

3.6.~~3335~~ Alternative 37: Imperial Irrigation District Hooper to SONGS Line (CPUC)3-~~7276~~

3.6.~~3336~~ Alternative 38: Increased Generation at Carlsbad or Encina During Peak Loads (CPUC) 3-~~7376~~

3.6.~~3537~~ Alternative 39: In-Area Distributed Generation of Renewables (Public Scoping; Public Utilities Code Section 1002.3) 3-~~7377~~

3.6.~~3638~~ Alternative 40: Energy Efficiency and Conservation (Public Utilities Code Section 1002.3)..... 3-~~7579~~

3.6.~~3739~~ Alternative 41: Demand Response (Public Utilities Code Section 1002.3)3-~~7781~~

3.7 References 3-~~7881~~

4 Environmental Analysis 4-1

Introduction to Environmental Analysis 4-1

Format of Environmental Resource Sections 4-1

Environmental Setting 4-2

Applicable Regulations, Plans, and Standards 4-2

Applicant Proposed Measures 4-2

CEQA Significance Criteria 4-3

Approach to Impact Analysis 4-3

Proposed Project Impacts and Mitigation Measures 4-3

Project Alternatives..... 4-4

Cumulative Projects Impacts Analysis 4-4

4.1 Biological Resources 4.1-1

 4.1.1 Definitions 4.1-1

 4.1.2 Approach to Data Collection..... 4.1-3

 4.1.3 Environmental Setting..... 4.1-7

 4.1.4 Applicable Regulations, Plans, and Standards 4.1-~~2928~~

 4.1.5 Applicant Proposed Measures..... 4.1-~~3637~~

 4.1.6 CEQA Significance Criteria..... 4.1-40

 4.1.7 Approach to Impact Assessment 4.1-~~4041~~

 4.1.8 Proposed Project Impacts and Mitigation Measures 4.1-~~4344~~

 4.1.9 Alternative 1: Eastern Cable Pole at Carmel Valley Road (Avoids Cable Pole in Black Mountain Ranch Community Park).... 4.1-~~405112~~

TABLE OF CONTENTS

4.1.10 Alternatives 2a and 2b: Eastern Cable Pole at Pole P40 and Underground Alignment through City Open Space or City Water Utility Service Road (Avoids Cable Pole in Black Mountain Ranch Community Park).... 4.1-~~113~~119

4.1.11 Alternative 3: Los Peñasquitos Canyon Preserve-Mercy Road Underground Alternative (Avoids Overhead in Northern Half of Segment A, Underground in Segment B, and Overhead in Segment C) 4.1-~~122~~128

4.1.12 Alternative 4: Segment D 69-kV Partial Underground Alignment (Reduces New TSPs in Segment D) 4.1-~~130~~137

4.1.13 Alternative 5: Pomerado Road to Miramar Area North Combination Underground/Overhead (Avoids All Proposed Project Segments) 4.1-~~140~~147

4.1.14 No Project Alternative 4.1-~~150~~157

4.1.15 References 4.1-~~151~~159

4.2 Aesthetics 4.2-1

4.2.1 Definitions 4.2-1

4.2.2 Approach to Data Collection..... 4.2-1

4.2.3 Environmental Setting..... 4.2-5

4.2.4 Applicable Regulations, Plans, and Standards 4.2-15

4.2.5 Applicant Proposed Measures..... 4.2-18

4.2.6 CEQA Significance Criteria..... 4.2-19

4.2.7 Approach to Impact Analysis 4.2-20

4.2.8 Proposed Project Impacts and Mitigation Measures 4.2-23

4.2.9 Alternative 1: Eastern Cable Pole at Carmel Valley Road (Avoids Cable Pole in Black Mountain Ranch Community Park)..... 4.2-76

4.2.10 Alternatives 2a and 2b: Eastern Cable Pole at Pole P40 and Underground Alignment through City Open Space or City Water Utility Service Road (Avoids Cable Pole in Black Mountain Ranch Community Park)..... 4.2-85

4.2.11 Alternative 3: Los Peñasquitos Canyon Preserve – Mercy Road Underground Alternative (Avoids Overhead North Segment A, Underground Segment B, and Overhead Segment C) 4.2-91

4.2.12 Alternative 4: Segment D 69-kV Partial Underground Alignment (Reduces New TSPs in Segment D) 4.2-99

4.2.13 Alternative 5: Pomerado Road to Miramar Area North Combination Underground/Overhead Alternative (Avoids All Proposed Project Segments)..... 4.2-105

4.2.15 No Project Alternative 4.2-~~117~~121

4.2.16 References 4.2-~~119~~123

4.3 Cultural Resources 4.3-1

4.3.1 Definitions 4.3-1

4.3.2 Approach to Data Collection..... 4.3-3

4.3.3 Environmental Setting..... 4.3-~~7~~6

4.3.4 Applicable Regulations, Plans, and Standards 4.3-~~23~~22

4.3.5 Applicant Proposed Measures..... 4.3-~~27~~26

TABLE OF CONTENTS

4.3.6 CEQA Significance Criteria..... 4.3-~~2827~~

4.3.7 Approach to Impact Analysis 4.3-~~2827~~

4.3.8 Proposed Project Impacts and Mitigation Measures 4.3-29

4.3.9 Alternative 1: Eastern Cable Pole at Carmel Valley Road
(Avoids Cable Pole in Black Mountain Ranch Community Park)..... 4.3-~~3635~~

4.3.10 Alternatives 2a and 2b: Eastern Cable Pole at Pole P40 and Underground
Alignment through City Open Space or City Water Utility Service Road
(Avoids Cable Pole in Black Mountain Ranch Community Park)..... 4.3-39

4.3.11 Alternative 3: Los Peñasquitos Canyon Preserve – Mercy Road
Underground (Avoids Overhead in Northern Half of Segment A,
Underground in Segment B, and Overhead in Segment C) 4.3-42

4.3.12 Alternative 4: Segment D 69-kV Partial Underground Alignment
(Reduces New TSPs in Segment D) 4.3-~~4948~~

4.3.13 Alternative 5: Pomerado Road to Miramar Area North Combination
Underground/Overhead (Avoids All Proposed Project Segments) 4.3-55

4.3.14 No Project Alternative 4.3-64

4.3.15 References 4.3-~~6465~~

4.4 Paleontological Resources..... 4.4-1

4.4.1 Definitions 4.4-1

4.4.2 Approach to Data Collection..... 4.4-2

4.4.3 Environmental Setting..... 4.4-2

4.4.4 Applicable Regulations, Plans, and Standards 4.4-11

4.4.5 Applicant Proposed Measures..... 4.4-11

4.4.6 CEQA Significance Criteria..... 4.4-12

4.4.7 Approach to Impact Analysis 4.4-12

4.4.8 Proposed Project Impacts and Mitigation Measures 4.4-13

4.4.9 Alternative 1: Eastern Cable Pole at Carmel Valley Road
(Avoids Cable Pole in Black Mountain Ranch Community Park)..... 4.4-17

4.4.10 Alternatives 2a and 2b: Eastern Cable Pole at Pole P40 and Underground
Alignment through City Open Space or City Water Utility Service Road
(Avoids Cable Pole in Black Mountain Ranch Community Park)..... 4.4-20

4.4.11 Alternative 3: Los Peñasquitos Canyon Preserve – Mercy Road
Underground (Avoids Overhead in Northern Half of Segment A,
Underground in Segment B, and Overhead in Segment C) 4.4-22

4.4.12 Alternative 4: Segment D 69-kV Partial Underground Alignment
(Reduces New TSPs in Segment D) 4.4-27

4.4.13 Alternative 5: Pomerado Road to Miramar Area North Combination
Underground/Overhead (Avoids All Proposed Project Segments) 4.4-29

4.4.14 No Project Alternative 4.4-~~3132~~

4.4.15 References 4.4-~~3233~~

4.5 Geology, Soils, and Mineral Resources 4.5-1

4.5.1 Approach to Data Collection..... 4.5-1

TABLE OF CONTENTS

4.5.2 Environmental Setting..... 4.5-~~13~~

4.5.3 Applicable Regulations, Plans, and Standards 4.5-~~2224~~

4.5.4 Applicant Proposed Measures..... 4.5-~~2527~~

4.5.5 CEQA Significance Criteria..... 4.5-~~2628~~

4.5.6 Approach to Impact Analysis 4.5-~~2629~~

4.5.7 Proposed Project Impacts and Mitigation Measures 4.5-~~2729~~

4.5.8 Alternative 1: Eastern Cable Pole at Carmel Valley Road
(Avoids Cable Pole in Black Mountain Ranch Community Park) 4.5-~~3840~~

4.5.9 Alternatives 2a and 2b: Eastern Cable Pole at Pole P40 and Underground
Alignment through City Open Space or City Water Utility Service Road
(Avoids Cable Pole in Black Mountain Ranch Community Park) 4.5-~~4345~~

4.5.10 Alternative 3: Los Peñasquitos Canyon Preserve – Mercy Road
Underground (Avoids Overhead in Northern Half of Segment A,
Underground in Segment B, and Overhead in Segment C) 4.5-~~4850~~

4.5.11 Alternative 4: Segment D 69-kV Partial Underground Alignment
(Reduces New TSPs in Segment D) 4.5-~~5860~~

4.5.12 Alternative 5: Pomerado Road to Miramar Area North Combination
Underground/Overhead (Avoids All Proposed Project Segments) 4.5-~~6869~~

4.5.13 No Project Alternative 4.5-~~8083~~

4.5.14 References 4.5-~~8185~~

VOLUME III

4.6 Hydrology and Water Resources..... 4.6-1

4.6.1 Approach to Data Collection..... 4.6-1

4.6.2 Environmental Setting..... 4.6-2

4.6.3 Applicable Regulations, Plans, and Standards 4.6-~~1312~~

4.6.4 Applicant Proposed Measures..... 4.6-~~1918~~

4.6.5 CEQA Significance Criteria..... 4.6-~~2120~~

4.6.6 Approach to Impact Analysis 4.6-~~2221~~

4.6.7 Proposed Project Impacts and Mitigation Measures 4.6-~~2221~~

4.6.8 Alternative 1: Eastern Cable Pole at Carmel Valley Road
(Avoids Cable Pole in Black Mountain Ranch Community Park) 4.6-37

4.6.9 Alternatives 2a and 2b: Eastern Cable Pole at Pole P40 and Underground
Alignment through City Open Space or City Water Utility Service Road
(Avoids Cable Pole in Black Mountain Ranch Community Park) 4.6-~~4140~~

4.6.10 Alternative 3: Los Peñasquitos Canyon Preserve – Mercy Road
Underground (Avoids Overhead in Northern Half of Segment A,
Underground in Segment B, and Overhead in Segment C) 4.6-44

4.6.11 Alternative 4: Segment D 69-kV Partial Underground Alignment
(Reduces New TSPs in Segment D) 4.6-~~5251~~

4.6.12 Alternative 5: Pomerado Road to Miramar Area North Combination
Underground/Overhead (Avoids All Proposed Project Segments) 4.6-~~5756~~

4.6.13 No Project Alternative 4.6-~~6566~~

TABLE OF CONTENTS

4.6.14 References 4.6-~~6869~~

4.7 Transportation and Traffic 4.7-1

4.7.1 Definitions 4.7-1

4.7.2 Approach to Data Collection 4.7-3

4.7.3 Environmental Setting 4.7-4

4.7.4 Applicable Regulations, Plans, and Standards 4.7-16

4.7.5 Applicant Proposed Measures 4.7-26

4.7.6 CEQA Significance Criteria 4.7-27

4.7.7 Approach to Impact Analysis 4.7-28

4.7.8 Proposed Project Impacts and Mitigation Measures 4.7-31

4.7.9 Alternative 1: Eastern Cable Pole at Carmel Valley Road
(Avoids Cable Pole in Black Mountain Ranch Community Park) 4.7-~~5253~~

4.7.10 Alternatives 2a and 2b: Eastern Cable Pole at Pole P40 and Underground
Alignment through City Open Space or City Water Utility Access Road
(Avoids Cable Pole in Black Mountain Ranch Community Park) 4.7-~~5758~~

4.7.11 Alternative 3: Los Peñasquitos Canyon Preserve – Mercy Road
Underground (Avoids Overhead in Northern Half of Segment A,
Underground in Segment B, and Overhead in Segment C) 4.7-~~6364~~

4.7.12 Alternative 4: Segment D 69-kV Partial Underground Alignment
(Reduces New TSPs in Segment D) 4.7-~~7477~~

4.7.13 Alternative 5: Pomerado Road to Miramar Area North Combination
Underground/Overhead (Avoids All Proposed Project Segments) 4.7-~~8184~~

4.7.14 No Project Alternative 4.7-~~9598~~

4.7.15 References 4.7-~~96100~~

4.8 Noise 4.8-1

4.8.1 Definitions 4.8-1

4.8.2 Approach to Data Collection 4.8-4

4.8.3 Environmental Setting 4.8-6

4.8.4 Applicable Regulations, Plans, and Standards 4.8-~~1617~~

4.8.5 Applicant Proposed Measures 4.8-~~1921~~

4.8.6 CEQA Significance Criteria 4.8-~~2021~~

4.8.7 Approach to Impact Analysis 4.8-~~2122~~

4.8.8 Proposed Project Impacts and Mitigation Measures 4.8-~~2223~~

4.8.9 Alternative 1: Cable Pole at Carmel Valley Road
(Avoids Cable Pole in Black Mountain Ranch Community Park) 4.8-~~4244~~

4.8.10 Alternatives 2a and 2b: Cable Pole at Pole P40 and Underground
Alignment through City Open Space or City Water Utility Service Road
(Avoids Cable Pole in Black Mountain Ranch Community Park) 4.8-~~4648~~

4.8.11 Alternative 3: Los Peñasquitos Canyon Preserve – Mercy Road
Underground (Avoids Overhead in Northern Half of Segment A,
Underground in Segment B, and Overhead in Segment C) 4.8-~~5052~~

TABLE OF CONTENTS

4.8.12 Alternative 4: Segment D 69-kV Partial Underground Alignment (Reduces New TSPs in Segment D) 4.8-~~5859~~

4.8.13 Alternative 5: Pomerado Road to Miramar Area North Combination Underground/Overhead (Avoids All Proposed Project Segments) 4.8-~~6567~~

4.8.14 No Project Alternative 4.8-~~7780~~

4.8.15 References 4.8-~~7883~~

4.9 Land Use and Planning 4.9-1

4.9.1 Approach to Data Collection..... 4.9-1

4.9.2 Environmental Setting..... 4.9-1

4.9.3 Regulatory Setting..... 4.9-10

4.9.4 Applicant Proposed Measures..... 4.9-~~1514~~

4.9.5 CEQA Significance Criteria..... 4.9-15

4.9.6 Approach to Impact Analysis 4.9-15

4.9.7 Proposed Project Impacts and Mitigation Measures 4.9-15

4.9.8 Alternative 1: Eastern Cable Pole at Carmel Valley Road (Avoids Cable Pole in Black Mountain Ranch Community Park)..... 4.9-~~3130~~

4.9.9 Alternatives 2a and 2b: Eastern Cable Pole at Pole P40 and Underground Alignment through City Open Space or City Water Utility Service Road (Avoids Cable Pole in Black Mountain Ranch Community Park)..... 4.9-~~3231~~

4.9.10 Alternative 3: Los Peñasquitos Canyon Preserve – Mercy Road Underground (Avoids Overhead in Northern Half of Segment A, Underground in Segment B, and Overhead in Segment C) 4.9-33

4.9.11 Alternative 4: Segment D 69-kV Partial Underground Alignment (Reduces New TSPs in Segment D) 4.9-34

4.9.12 Alternative 5: Pomerado Road to Miramar Area North Combination Underground/Overhead (Avoids All Proposed Project Segments) 4.9-35

4.9.13 No Project Alternative 4.9-37

4.9.14 References 4.9-37

4.10 Recreation 4.10-1

4.10.1 Approach to Data Collection..... 4.10-1

4.10.2 Environmental Setting..... 4.10-2

4.10.3 Applicable Regulations, Plans, and Standards 4.10-10

4.10.4 Applicant Proposed Measures..... 4.10-15

4.10.5 CEQA Significance Criteria..... 4.10-17

4.10.6 Approach to Impact Analysis 4.10-17

4.10.7 Proposed Project Impacts and Mitigation Measures 4.10-18

4.10.8 Alternative 1: Eastern Cable Pole at Carmel Valley Road (Avoids Cable Pole in Black Mountain Ranch Community Park)..... 4.10-30

4.10.9 Alternatives 2a and 2b: Eastern Cable Pole at Pole P40 and Underground Alignment through City Open Space or City Water Utility Service Road (Avoids Cable Pole in Black Mountain Ranch Community Park)..... 4.10-34

TABLE OF CONTENTS

4.10.10 Alternative 3: Los Peñasquitos Canyon Preserve – Mercy Road Underground (Avoids Overhead in Northern Half of Segment A, Underground in Segment B, and Overhead in Segment C) 4.10-40

4.10.11 Alternative 4: Segment D 69-kV Partial Underground Alignment (Reduces New TSPs in Segment D) 4.10-48

4.10.12 Alternative 5: Pomerado Road to Miramar Area North Combination Underground/Overhead (Avoids All Proposed Project Segments) .. 4.10-~~5354~~

4.10.13 No Project Alternative 4.10-~~5859~~

4.10.14 References 4.10-~~6062~~

4.11 Hazards and Hazardous Materials 4.11-1

4.11.1 Definitions 4.11-1

4.11.2 Approach to Data Collection 4.11-1

4.11.3 Environmental Setting 4.11-2

4.11.4 Applicable Regulations, Plans, and Standards 4.11-10

4.11.5 Applicant Proposed Measures 4.11-16

4.11.6 CEQA Significance Criteria 4.11-18

4.11.7 Approach to Impact Analysis 4.11-~~1819~~

4.11.8 Proposed Project Impacts and Mitigation Measures 4.11-19

4.11.8 Alternative 1: Eastern Cable Pole at Carmel Valley Road (Avoids Cable Pole in Black Mountain Ranch Community Park) 4.11-~~4142~~

4.11.9 Alternatives 2a and 2b: Eastern Cable Pole at Pole P40 and Underground Alignment through City Open Space or City Water Utility Service Road (Avoids Cable Pole in Black Mountain Ranch Community Park) 4.11-~~4647~~

4.11.10 Alternative 3: Los Peñasquitos Canyon Preserve – Mercy Road Underground Alternative (Avoids Overhead in Northern Half of Segment A, Underground in Segment B, and Overhead in Segment C) 4.11-~~5253~~

4.11.11 Alternative 4: Segment D 69-kV Partial Underground Alignment (Reduces New TSPs in Segment D) 4.11-~~5960~~

4.11.12 Alternative 5: Pomerado Road to Miramar Area North Combination Underground/Overhead (Avoids All Proposed Project Segments) .. 4.11-~~6768~~

4.11.13 No Project Alternative 4.11-~~7981~~

4.11.14 References 4.11-~~8183~~

4.12 Fire and Fuels Management 4.12-1

4.12.1 Approach to Data Collection 4.12-1

4.12.2 Environmental Setting 4.12-2

4.12.3 Applicable Regulations, Plans, and Standards 4.12-12

4.12.4 Applicant Proposed Measures 4.12-14

4.12.5 CEQA Significance Criteria 4.12-15

4.12.6 Approach to Impact Analysis 4.12-15

4.12.7 Proposed Project Impacts and Mitigation Measures 4.12-19

TABLE OF CONTENTS

4.12.8 Alternative 1: Eastern Cable Pole at Carmel Valley Road
(Avoids Cable Pole in Black Mountain Ranch Community Park) 4.12-32

4.12.9 Alternatives 2a and 2b: Eastern Cable Pole at Pole P40 and Underground
Alignment through City Open Space or City Water Utility Service Road
(Avoids Cable Pole in Black Mountain Ranch Community Park) 4.12-35

4.12.10 Alternative 3: Los Peñasquitos Canyon Preserve – Mercy Road
Underground (Avoids Overhead in Northern Half of Segment A,
Underground in Segment B, and Overhead in Segment C) 4.12-36

4.12.11 Alternative 4: Segment D 69-kV Partial Underground Alignment
(Reduces New TSPs in Segment D) 4.12-38

4.12.12 Alternative 5: Pomerado Road to Miramar Area North Combination
Underground/Overhead (Avoids All Proposed Project Segments) 4.12-39

4.12.13 No Project Alternative 4.12-41

4.12.13 References 4.12-42

4.13 Air Quality 4.13-1

4.13.1 Approach to Data Collection 4.13-1

4.13.2 Environmental Setting 4.13-2

4.13.3 Applicable Regulations, Plans, and Standards 4.13-12

4.13.4 Applicant Proposed Measures 4.13-14

4.13.5 CEQA Significance Criteria 4.13-15

4.13.6 Approach to Impact Analysis 4.13-16

4.13.7 Proposed Project Impacts and Mitigation Measures 4.13-19

4.13.8 Alternative 1: Eastern Cable Pole at Carmel Valley Road
(Avoids Cable Pole in Black Mountain Ranch Community Park) 4.13-31

4.13.9 Alternatives 2a and 2b: Eastern Cable Pole at Pole P40 and
Underground Alignment through City Open Space or City Water
Utility Service Road (Avoids Cable Pole in Black Mountain Ranch
Community Park) 4.13-36

4.13.10 Alternative 3: Los Peñasquitos Canyon Preserve-Mercy Road Underground
(Avoids Overhead in Northern Half of Segment A, Underground in
Segment B, and Overhead in Segment C) 4.13-40

4.13.11 Alternative 4: Segment D 69-kV Partial Underground Alignment
(Reduces New TSPs in Segment D) 4.13-~~4748~~

4.13.12 Alternative 5: Pomerado Road to Miramar Area North Combination
Underground/Overhead (Avoids All Proposed Project Segments) 4.13-57

4.13.13 No Project Alternative 4.13-~~6566~~

4.13.14 References 4.13-~~6566~~

4.14 Greenhouse Gases 4.14-1

4.14.1 Approach to Data Collection 4.14-1

4.14.2 Environmental Setting 4.14-1

4.14.3 Applicable Regulations, Plans, and Standards 4.14-3

4.14.4 Applicant Proposed Measures 4.14-7

4.14.5 CEQA Significance Criteria 4.14-8

TABLE OF CONTENTS

4.14.6	Approach to Impact Analysis	4.14-8
4.14.7	Proposed Project Impacts and Mitigation Measures	4.14-9
4.14.8	Alternative 1: Eastern Cable Pole at Carmel Valley Road (Avoids Cable Pole in Black Mountain Ranch Community Park).....	4.14-15
4.14.9	Alternatives 2a and 2b: Eastern Cable Pole at Pole P40 and Underground Alignment through City Open Space or City Water Utility Service Road (Avoids Cable Pole in Black Mountain Ranch Community Park)	4.14-17
4.14.10	Alternative 3: Los Peñasquitos Canyon Preserve – Mercy Road Underground (Avoids Overhead in Northern Half of Segment A, Underground in Segment B, and Overhead in Segment C)	4.14-19
4.14.11	Alternative 4: Segment D 69-kV Partial Underground Alignment (Reduces New TSPs in Segment D)	4.14-23
4.14.12	Alternative 5: Pomerado Road to Miramar Area North Combination Underground/Overhead (Avoids All Proposed Project Segments)	4.14-26
4.14.13	No Project Alternative	4.14- 29 <u>30</u>
4.14.14	References	4.14- 30 <u>31</u>
4.15	Agriculture and Forestry.....	4.15-1
4.15.1	Definitions	4.15-1
4.15.2	Approach to Data Collection.....	4.15-1
4.15.3	Environmental Setting.....	4.15-2
4.15.4	Applicable Regulations, Plans, and Standards	4.15-10
4.15.5	Applicant Proposed Measures.....	4.15-12
4.15.6	CEQA Significance Criteria.....	4.15-12
4.15.7	Approach to Impact Analysis	4.15-13
4.15.8	Proposed Project Impacts and Mitigation Measures	4.15-13
4.15.9	Alternative 1: Eastern Cable Pole at Carmel Valley Road (Avoids Cable Pole in Black Mountain Ranch Community Park).....	4.15-19
4.15.10	Alternative 2a and 2b: Eastern Cable Pole at Pole P40 and Underground Alignment through City Open Space or City Water Utility Service Road (Avoids Cable Pole in Black Mountain Ranch Community Park).....	4.15-21
4.15.11	Alternative 3: Los Peñasquitos Canyon Preserve-Mercy Road Underground (Avoids Overhead in Northern Half of Segment A, Underground in Segment B, and Overhead in Segment C)	4.15-24
4.15.12	Alternative 4: Segment D 69-kV Partial Underground Alignment (Reduces New TSPs in Segment D)	4.15-26
4.15.13	Alternative 5: Pomerado Road to Miramar Area North Combination Underground/Overhead (Avoids All Proposed Project Segments)	4.15-28
4.15.14	No Project Alternative	4.15- 30 <u>31</u>
4.15.15	References	4.15- 31 <u>32</u>
4.16	Population and Housing	4.16-1
4.16.1	Approach to Data Collection.....	4.16-1
4.16.2	Environmental Setting.....	4.16-1

TABLE OF CONTENTS

4.16.3 Applicable Regulations, Plans, and Standards 4.16-3

4.16.4 Applicant Proposed Measures..... 4.16-3

4.16.5 CEQA Significance Criteria..... 4.16-3

4.16.6 Approach to Impact Analysis 4.16-4

4.16.7 Proposed Project Impacts and Mitigation Measures 4.16-4

4.16.8 Alternative 1: Eastern Cable Pole at Carmel Valley Road
(Avoids Cable Pole in Black Mountain Ranch Community Park)..... 4.16-6

4.16.9 Alternative 2: Eastern Cable Pole at Pole P40 and Underground
Alignment through City Open Space or City Water Utility Service Road
(Avoids Cable Pole in Black Mountain Ranch Community Park)..... 4.16-7

4.16.10 Alternative 3: Los Peñasquitos Canyon Preserve-Mercy Road
Underground (Avoids Overhead North Segment A, Underground
Segment B, and Overhead Segment C) 4.16-8

4.16.11 Alternative 4: Segment D ~~69kV~~69-kV Partial Underground Alignment
(Reduces New TSPs in Segment D) 4.16-9

4.16.12 Alternative 5: Pomerado Road to Miramar Area North Combination
Underground/Overhead (Avoids All Proposed Project Segments) 4.16-11

4.16.13 No Project Alternative 4.16-12

4.16.14 References 4.16-~~12~~13

4.17 Utilities and Public Service Systems 4.17-1

4.17.1 Approach to Data Collection..... 4.17-1

4.17.2 Environmental Setting..... 4.17-1

4.17.3 Applicable Regulations, Plans, and Standards 4.17-14

4.17.4 Applicant Proposed Measures..... 4.17-20

4.17.5 CEQA Significance Criteria..... 4.17-22

4.17.6 Approach to Impact Analysis 4.17-23

4.17.7 Proposed Project Impacts and Mitigation Measures 4.17-23

4.17.8 Alternative 1: Eastern Cable Pole at Carmel Valley Road
(Avoids Cable Pole in Black Mountain Ranch Community Park)..... 4.17-36

4.17.9 Alternatives 2a and 2b: Eastern Cable Pole at Pole P40 and Underground
Alignment through City Open Space or City Water Utility Service Road
(Avoids Cable Pole in Black Mountain Ranch Community Park)..... 4.17-~~41~~42

4.17.10 Alternative 3: Los Peñasquitos Canyon Preserve-Mercy Road Underground
(Avoids Overhead in Northern Half of Segment A, Underground in
Segment B, and Overhead in Segment C) 4.17-~~48~~49

4.17.11 Alternative 4: Segment D 69-kV Partial Underground Alignment
(Reduces New TSPs in Segment D) 4.17-~~56~~57

4.17.12 Alternative 5: Pomerado Road to Miramar Area North Combination
Underground/Overhead (Avoids All Proposed Project Segments) .. 4.17-~~64~~65

4.17.13 No Project Alternative 4.17-74

4.17.14 References 4.17-~~75~~76

5 Cumulative Impacts 5-1

TABLE OF CONTENTS

5.1 Approach to Cumulative Impact Analysis 5-1

5.2 Cumulative Scenario Projects..... 5-3

5.2.1 Cumulative Project List 5-3

5.2.2 Plans and Projections..... 5-~~163~~

5.2.3 Mission—Peñasquitos 230-kV Transmission Line 5-16

5.3 Cumulative Impact Analysis for the Proposed Project 5-16

5.3.1 Introduction..... 5-16

5.3.2 Biological Resources 5-17

5.3.3 Aesthetics 5-20

5.3.4 Cultural Resources 5-26

5.3.5 Paleontological Resources 5-28

5.3.6 Geology and Soils 5-29

5.3.7 Hydrology and Water Resources 5-31

5.3.8 Transportation and Traffic 5-34

5.3.9 Noise 5-36

5.3.10 Recreation..... 5-38

5.3.11 Hazards and Hazardous Materials..... 5-41

5.3.12 Fire and Fuels Management 5-43

5.3.13 Air Quality 5-44

5.3.14 Greenhouse Gas Emissions 5-46

5.3.15 Agriculture 5-47

5.3.16 Utilities and Public Services 5-48

5.4 Cumulative Impact Analysis for Alternatives..... 5-50

5.4.1 Introduction..... 5-50

5.4.2 Alternatives..... 5-~~6551~~

5.4.3 Comparative Analysis of Cumulative Impacts..... 5-~~6773~~

5.4.4 Alternative Impacts on Air Quality 5-~~6773~~

5.5 References..... 5-75

6 Comparison of Alternatives 6-1

6.1 Introduction 6-1

6.2 CEQA Requirements for Alternatives Comparison 6-1

6.2.1 Conclusion Regarding Environmentally Superior Alternative 6-1

6.3 Alternatives Comparison Methodology 6-23

6.4 Comparison of Project Alternatives 6-4

6.4.1 Cable Pole and Routing Project Alternatives..... 6-~~45~~

6.4.2 Proposed Project vs. Alternative 3: Los Peñasquitos Canyon Preserve—
Mercy Road Underground..... 6-12

6.4.3 Proposed Project vs. Alternative 4: Segment D 69-kV Partial Underground
Alignment 6-17

TABLE OF CONTENTS

- 6.4.4 Proposed Project vs. Alternative 5: Pomerado Road to Miramar Area North Combination Underground/Overhead 6-21
- 6.4.5 Conclusion: Environmentally Superior Alternative 6-26
- 6.5 No Project Alternative vs. the PROPOSED PROJECT 6-26
- 7 Other CEQA Considerations 7-1**
 - 7.1 Electrical Interference 7-1
 - 7.1.1 Defining Electrical Interference 7-1
 - 7.1.2 Policies, Standards, and Regulations 7-5
 - 7.1.3 Electrical Interference Data Applicable to the Proposed Project 7-6
 - 7.2 Energy Conservation 7-7
 - 7.2.1 Proposed Project Energy Conservation 7-7
 - 7.2.2 Energy Conservation Alternatives 7-8
 - 7.3 Growth Inducing Effects 7-9
 - 7.3.1 Growth Caused by Direct and Indirect Employment 7-9
 - 7.3.2 Growth Related to Provision of Additional Electric Power 7-9
 - 7.4 Significant Irreversible Changes and Irretrievable Commitments of Resources 7-10
 - 7.4.1 Non-Renewable Resources 7-10
 - 7.4.2 Long-term or Permanent Access to Previously Inaccessible Areas 7-11
 - 7.4.3 Potential Accidents 7-11
 - 7.5 Significant Environmental Effects that Cannot be Avoided 7-12
 - 7.6 References 7-13
- 8 Report Preparation 8-1**
 - 8.1 List of Preparers 8-1
 - 8.1.1 Lead and Participating Agencies 8-1
 - 8.2 Agencies and Organizations Contacted 8-3
 - 8.2.1 Federal Agencies and Organizations 8-3
 - 8.2.2 State Agencies and Organizations 8-3
 - 8.2.3 Local Agencies and Organizations 8-34
 - 8.2.4 Tribes 8-4
- 9 Mitigation Monitoring and Reporting Plan 9-1**
 - 9.1 Authority for the Mitigation Monitoring, Compliance, and Reporting Program 9-2
 - 9.1.1 California Public Utilities Commission 9-2
 - 9.2 Organization of the Mitigation Monitoring, Compliance, and Reporting Program 9-2
 - 9.3 Roles and Responsibilities 9-4
 - 9.3.1 Enforcement Responsibility 9-5
 - 9.3.2 Compliance Responsibility 9-5
 - 9.4 Dispute Resolution 9-5

TABLE OF CONTENTS

9.5 General Monitoring Procedures 9-6

9.5.1 Environmental Monitors 9-6

9.5.2 Construction Personnel 9-6

9.5.3 Reporting Procedures..... 9-7

9.5.4 Public Access to Records..... 9-7

ON CD

Appendix A Detailed Project Route Maps.

Appendix B Proposed Project Pole Details.

Appendix C Magnetic Field Management Plan.

Appendix D Alternatives Screening Report.

Appendix E Detailed Alternative Route Maps.

Appendix F Aesthetic Resources Supporting Information.

Appendix G Biological Resources Supporting Information.

Appendix H Cultural Resources Supporting Information.

Appendix I Draft Fire Prevention Plan.

Appendix J Air Quality and Greenhouse Gas Supporting Information.

Appendix K City of San Diego Multiple Species Conservation Plan Consistency Analysis.

Appendix L SDG&E Best Management Practices Manual.

Appendix M Transportation and Traffic Supporting Information.

Appendix N Hazards and Hazardous Materials Supporting Information

Appendix O Geotechnical Study for the Proposed Project.

TABLE OF CONTENTS

List of Tables

Table ES.3-1	Summary of Renewable Generation in San Diego RPS Portfolio	ES-9
Table ES.4-1	Summary of Scoping Comments	ES-10
Table ES.6-2	Summary of All Significant and Unavoidable Impacts for the Proposed Project.....	ES-23
Table ES.7-1	Cumulative Analysis of Proposed Project and Alternatives	ES-54
Table ES.8-1	Summary of Alternatives Analyzed	ES-63
Table ES.10-1	Summary of Impacts and Mitigation for the Proposed Project	ES-70
Table 1.1-1	Summary of Renewable Generation in San Diego RPS Portfolio	1-6
Table 1.3 -1	Potentially Required Permits and Approvals	1-10
Table 1.4-1	Agencies, Municipalities, and Tribes Notified During the Scoping Process	1-13
Table 1.4-2	Summary of Scoping Comments	1-14
Table 2.1-1	Existing Infrastructure in the Transmission Corridor	2-1
Table 2.2-1	Proposed Project Components by Location.....	2-2
Table 2.2-2	Pole Characteristics.....	2-12
Table 2.2-3	Transmission Line Segment A Poles and Infrastructure to be Installed and Removed.....	2-21
Table 2.2-4	Transmission Line Segment B Infrastructure to be Installed and Removed	2-27
Table 2.2-5	Transmission Line Segment C Infrastructure to be Installed and Removed.....	2-29
Table 2.2-6	Transmission Line Segment D Infrastructure to be Installed and Removed.....	2-32
Table 2.3-1	Areas of Temporary and Permanent Project Disturbance.....	2- 3637
Table 2.3-2	Proposed Project Staging Yards and Substation Storage	2- 4041
Table 2.3-3	Estimated Cut-and-Fill Quantities	2- 4243
Table 2.3-4	Retaining Wall Dimensions.....	2-43
Table 2.3-5	Hazardous Materials Typically Used for Construction	2-59
Table 2.3-6	Typical End Destination of Removed Materials	2-60
Table 2.3-7	Construction Equipment Use and Workers	2-61
Table 2.3-8	Equipment Use	2-69
Table 2.3-9	Proposed Construction Timetable.....	2-70
Table 2.4-1	New Permanent Work Areas for Aboveground Facilities	2-72
Table 2.4-2	New Permanent Work Areas for Underground Facilities	2-72
Table 2.5-1	Applicant Proposed Measures	2-74
Table 2.6-1	Existing and Proposed EMF by Transmission Line Segment.....	2-94
Table 2.6-2	Low- and No-Cost Measures SDG&E Proposed for the Proposed Project.....	2-95
Table 2.6-3	Low- and No-Cost Measures SDG&E Rejected for the Proposed Project	2-95
<u>Table 2.6-4</u>	<u>Proposed EMF by Alternative</u>	<u>2-97</u>
Table 3.3-1	Summary of Renewable Generation in San Diego RPS Portfolio	3-5
Table 3.4-1	Sycamore-Peñasquitos 230-kV Transmission Line Project Alternatives	3-9
Table 3.5-1	Alternative 3 Proposed Construction Timetable	3- 2426
Table 3.5-2	Alternative 4 Proposed Construction Timetable	3-32
<u>Table 3.5-3</u>	<u>Alternative 5 Staging Yards</u>	<u>3-37</u>
Table 3.5- 34	Alternative 5 Proposed Construction Timetable	3- 3638
Table 4.1-1	Summary of 7.5 Minute USGS Quadrangles Reviewed.....	4.1-3
Table 4.1-2	Summary of Vegetation Communities in Biological Survey Area	4.1- 78
Table 4.1-3	Special-status Species with Moderate or High Potential to Occur in the Biological Survey Area	4.1-10
Table 4.1-4	Potential Jurisdictional Waters and Wetlands in BSA	4.1-22
Table 4.1-5	Proximity of Critical Habitat to Proposed Project.....	4.1-25
Table 4.1-6	Applicant Proposed Measures for Biological Resources Impacts.....	4.1-37
Table 4.1-7	Summary of Proposed Project Impacts to Biological Resources.....	4.1-44
Table 4.1-8	<u>Direct and Permanent</u> Impacts to Individual Special-status Plants from the Proposed Project Area.....	4.1-47

TABLE OF CONTENTS

Table 4.1-9 Special-status Wildlife located in the Proposed Project Area and Potential for Effect 4.1-~~4950~~

Table 4.1-10 Required Habitat Mitigation Ratios 4.1-~~7578~~

Table 4.1-11 Summary of Proposed Project Impacts to Potentially Suitable Habitat for Special-status Reptile Species 4.1-~~8082~~

Table 4.1-12 Summary of Proposed Project Impacts to Potentially Suitable Habitat for Special-status Bird Species Covered by the Subregional NCCP1 4.1-~~8285~~

Table 4.1-13 Summary of Proposed Project Impacts to Potentially Suitable Habitat for Special-status Mammal Species Covered by the Subregional NCCP 4.1-~~8993~~

Table 4.1-14 Impacts to Vegetation Communities within the Proposed Project Area . 4.1-~~9398~~

Table 4.1-15 Summary of Proposed Project Impacts to MHPA Preserve Area 4.1-~~97102~~

Table 4.1-16 Potential Impacts to Waters within the Proposed Project Area 4.1-~~101107~~

Table 4.1-17 Summary of Impacts of Alternative 1 to Biological Resources 4.1-~~106113~~

Table 4.1-18 Summary of Impacts of Alternative 2 to Biological Resources 4.1-~~114121~~

Table 4.1-19 Summary of Impacts of Alternative 3 to Biological Resources 4.1-~~123129~~

Table 4.1-20 Summary of Impacts of Alternative 4 to Biological Resources 4.1-~~131138~~

Table 4.1-21 Summary of Impacts of Alternative 5 to Biological Resources 4.1-~~141148~~

Table 4.2-1 Definition of Visual Resources Terms 4.2-2

Table 4.2-2 Description of Landscape Character Units 4.2-7

Table 4.2-3 Applicant Proposed Measures to Reduce Aesthetic Impacts 4.2-19

Table 4.2-4 Guidelines for Determining Adverse Visual Impact Significance 4.2-22

Table 4.2-5 Visual Impact Score Description 4.2-22

Table 4.2-6 Summary of Proposed Project Impacts to Aesthetics 4.2-23

Table 4.2-7 Summary of the Visible Features of the Proposed Project by Transmission Line Segment 4.2-30

Table 4.2-8 Description of Proposed Project Key Observation Points and Viewer Sensitivity at Each Location 4.2-63

Table 4.2-9 Summary of Visual Impacts for Key Observation Points 4.2-65

Table 4.2-10 Summary of Alternative 1 Impacts to Aesthetics 4.2-77

Table 4.2-11 Summary of Alternative 2 Impacts to Aesthetics 4.2-86

Table 4.2-12 Summary of Alternative 3 Impacts to Aesthetics 4.2-93

Table 4.2-13 Summary of Alternative 4 Impacts to Aesthetics 4.2-101

Table 4.2-14 Summary of Alternative 5 Impacts to Aesthetics 4.2-~~107108~~

Table 4.3-1 Tribes Contacted During Native American Consultation 4.3-~~67~~

Table 4.3-2 Cultural Resources Sites within the Proposed Project Survey Areas 4.3-17

Table 4.3-3 Applicant Proposed Measures for Cultural Resources Impacts 4.3-~~2726~~

Table 4.3-4 Summary of Proposed Project Impacts on Cultural Resources 4.3-~~3029~~

Table 4.3-5 Summary of Alternative 1 Impacts on Cultural Resources 4.3-~~3736~~

Table 4.3-6 Summary of Alternative 2 Impacts on Cultural Resources 4.3-~~4039~~

Table 4.3-7 Resources Identified in Records Search within Alternative 3 Underground Alignment Impact Areas 4.3-~~4345~~

Table 4.3-8 Summary of Alternative 3 Impacts on Cultural Resources 4.3-~~4445~~

Table 4.3-9 Resources Identified in Records Search within Alternative 4 Impact Areas along Carmel Mountain Road and East Ocean Air Drive 4.3-~~4951~~

Table 4.3-10 Summary of Alternative 4 Impacts on Cultural Resources 4.3-~~5051~~

Table 4.3-11 Resources Identified in Records Search within Alternative 5 Impact Areas. 4.3-56

Table 4.3-12 Summary of Alternative 5 Impacts on Cultural Resources 4.3-61

Table 4.4-1 Paleontological Sensitivity of Geologic Units that Underlay the Proposed Project 4.4-6

Table 4.4 2 Applicant Proposed Measures for Paleontological Resource Impacts 4.4-12

Table 4.4-3 Summary of Proposed Project Impacts to Paleontological Resources 4.4-13

Table 4.4-4 Summary of Alternative 1 Impacts to Paleontological Resources 4.4-18

Table 4.4-5 Summary of Alternatives 2a and 2b Impacts to Paleontological Resources 4.4-20

TABLE OF CONTENTS

Table 4.4-6	Paleontological Sensitivity of Geologic Units that Underlay Alternative 3....	4.4-23
Table 4.4-7	Summary of Alternative 3 Impacts to Paleontological Resources.....	4.4-24
Table 4.4-8	Paleontological Sensitivity of Geologic Units that Underlay Underground Portion of Alternative 4.....	4.4-27
Table 4.4-9	Summary of Alternative 4 Impacts to Paleontological Resources.....	4.4-28
Table 4.4-10	Paleontological Sensitivity of Geologic Units that Underlay Alternative 5.....	4.4- 31
Table 4.4-11	Summary of Alternative 5 Impacts to Paleontological Resources.....	4.4- 31
Table 4.5-1	Geologic Units in the Proposed Project Area.....	4.5- 7
Table 4.5-2	Major Soil Units in the Proposed Project Area.....	4.5- 9
Table 4.5-3	Major Active Faults in the Proposed Project Region	4.5-17
Table 4.5-4	Estimated Ground Motion Parameters in the Proposed Project Area1	4.5- 20
Table 4.5-5	Applicant Proposed Measures for Geology, Soils, and Mineral Resources Impacts.....	4.5- 27
Table 4.5-6	Summary of Proposed Project Impacts to Geology, Soils, and Mineral Resources.....	4.5- 29
Table 4.5-7	Summary of Alternative 1 Impacts on Geology, Soils, and Mineral Resources.....	4.5- 41
Table 4.5-8	Summary of Alternative 2 Impacts on Geology, Soils, and Mineral Resources.....	4.5- 47
Table 4.5-9	Geologic Units in the Alternative 3 Area.....	4.5- 51
Table 4.5-10	Major Soil Units in the Alternative 3 Area.....	4.5- 55
Table 4.5-11	Summary of Alternative 3 Impacts on Geology, Soils, and Mineral Resources.....	4.5- 56
Table 4.5-12	Geologic Units in the Alternative 4 Area.....	4.5- 61
Table 4.5-13	Major Soil Units in the Alternative 4 Area.....	4.5- 64
Table 4.5-14	Summary of Alternative 4 Impacts on Geology, Soils, and Mineral Resources.....	4.5- 65
Table 4.5-15	Geologic Units in the Alternative 5 Area.....	4.5- 70
Table 4.5-16	Major Soil Units in the Proposed Project Alternative 5 Area	4.5- 74
Table 4.5-17	Summary of Alternative 5 Impacts on Geology, Soils, and Mineral Resources.....	4.5- 78
Table 4.6-1	Hydrologic Units in the Proposed Project Area	4.6-3
Table 4.6-2	Creeks and Streams in the Proposed Project Area	4.6-6
Table 4.6-3	Impaired Water Bodies Within and Downstream of the Proposed Project Area.....	4.6- 98
Table 4.6-4	Jurisdictional Features in the Proposed Project Study Area by Regulatory Agency.....	4.6- 109
Table 4.6-5	Applicant Proposed Measures for Hydrology and Water Resources Impacts.....	4.6-19
Table 4.6-6	Summary of Proposed Project Impacts to Hydrology and Water Resources.....	4.6-22
Table 4.6-7	Proposed Project Soil-Disturbing Activities and Nearest Waterbody.....	4.6- 24
Table 4.6-8	Summary of Alternative 1 Impacts to Hydrology and Water Resources ..	4.6- 3837
Table 4.6-9	Summary of Alternatives 2 Impacts to Hydrology and Water Resources	4.6-41
Table 4.6-10	Summary of Alternative 3 Impacts to Hydrology and Water Resources	4.6- 47
Table 4.6-11	Summary of Alternative 4 Impacts to Hydrology and Water Resources	4.6- 52
Table 4.6-12	Summary of Alternative 5 Impacts to Hydrology and Water Resources	4.6- 59
Table 4.7-1	Level of Service for Freeway Segments.....	4.7-2
Table 4.7-2	Definitions of Level of Service for Local Roads.....	4.7-2
Table 4.7-3	Traffic Volumes on I-15 and SR-56	4.7-4
Table 4.7- 43	Airports and Heliports in the Proposed Project Vicinity	4.7- 85
Table 4.7-4	Traffic Volumes on I-15 and SR-56	4.7-5
Table 4.7-5	Bicycle Routes near the Proposed Project Area.....	4.7-15

TABLE OF CONTENTS

Table 4.7-6	Public Transit Routes near the Proposed Project Area.....	4.7-17
Table 4.7-7	Applicant Proposed Measures for Transportation and Traffic Impacts.....	4.7-26
Table 4.7-8	Maximum Construction Vehicle Trips per Transmission Line Segment.....	4.7-29
Table 4.7-9	Estimated Proposed Project Vehicle Trips for Equipment Deliveries.....	4.7-30
Table 4.7-10	Summary of Proposed Project Impacts to Transportation and Traffic.....	4.7-31
Table 4.7-11	Summary of Alternative 1 Impacts to Transportation and Traffic.....	4.7- 5354
Table 4.7-12	Summary of Alternative 2 Impacts to Transportation and Traffic.....	4.7- 5860
Table 4.7-13	Summary of Alternative 3 Impacts to Transportation and Traffic.....	4.7- 6769
Table 4.7-14	Maximum Construction Vehicle Trips for Alternative 3	4.7- 6971
Table 4.7-15	Summary of Alternative 4 Impacts to Transportation and Traffic.....	4.7- 7578
Table 4.7-16	Summary of Alternative 5 Impacts to Transportation and Traffic.....	4.7- 8386
Table 4.8-1	Typical Noise Levels in the Environment	4.8-2
Table 4.8-2	Noise-Sensitive Receptors within 1,000 Feet of the Proposed Project	4.8-13
Table 4.8-3	Summary of Ambient Noise Levels near Proposed Project	4.8- 1516
Table 4.8-4	Construction Groundborne Vibration Damage Criteria	4.8- 1718
Table 4.8-5	Groundborne Vibration Impact Thresholds	4.8- 1719
Table 4.8-6	Poway Noise Requirements for Construction Equipment.....	4.8- 1920
Table 4.8-7	Applicant Proposed Measures for Noise Impacts	4.8- 2021
Table 4.8-8	Summary of Proposed Project Impacts to Noise	4.8- 2324
Table 4.8-9	General Plan Policies and Noise Standards for Cities in the Project Area	4.8- 2526
Table 4.8-10	Maximum Noise Levels Generated by Construction Equipment	4.8- 2526
Table 4.8-11	Typical Cumulative Noise Levels by Stage	4.8- 2627
Table 4.8-12	Maximum Possible Helicopter Noise Levels	4.8- 2728
Table 4.8-13	Summary of Construction Noise Levels and Standards by Proposed Project Work Area.....	4.8- 2729
Table 4.8-14	Proposed Project Construction Groundborne Vibration Levels	4.8- 3738
Table 4.8-15	Summary of Alternative 1 Impacts to Noise	4.8- 4344
Table 4.8-16	Maximum Noise Levels for Alternatives 1 Through 5.....	4.8- 4446
Table 4.8-17	Summary of Alternative 2 Impacts to Noise	4.8- 4749
Table 4.8-18	Nearest Noise-Sensitive Receptors to Alternative 3.....	4.8- 5052
Table 4.8-19	Alternative 3 Approximate Ambient Noise Levels	4.8- 5352
Table 4.8-20	Summary of Alternative 3 Impacts to Noise	4.8- 5355
Table 4.8-21	Nearest Noise-Sensitive Receptors to Alternative 4.....	4.8- 5860
Table 4.8-22	Summary of Alternative 4 Impacts to Noise	4.8- 6164
Table 4.8-23	Nearest Noise-Sensitive Receptors to Alternative 5.....	4.8- 6668
Table 4.8-24	Alternative 5 Approximate Ambient Noise Levels	4.8- 6673
Table 4.8-25	Summary of Alternative 5 Impacts to Noise	4.8- 7173
Table 4.9-1	Project Components by Jurisdiction.....	4.9-2
Table 4.9-2	General Plan Designation Definitions	4.9-5
Table 4.9-3	Summary of Current Land Uses by Project Component.....	4.9-8
Table 4.9-4	Summary of Proposed Project Impacts to Land Use and Planning.....	4.9-15
Table 4.9-5	Consistency Analysis of Land Use Plans, Policies, and Regulations	4.9- 1918
Table 4.9-6	Summary of Alternative 1 Impacts to Land Use and Planning	4.9-31
Table 4.9-7	Summary of Alternative 2 Impacts to Land Use and Planning	4.9-32
Table 4.9-8	Summary of Alternative 3 Impacts to Land Use and Planning.....	4.9- 3433
Table 4.9-9	Summary of Alternative 4 Impacts to Land Use and Planning.....	4.9-35
Table 4.9-10	Summary of Alternative 5 Impacts to Land Use and Planning.....	4.9-36
Table 4.10-1	Active-Use City Parks within 1,000 Feet of the Proposed Project	4.10-8
Table 4.10-2	Applicant Proposed Measures for Recreation Impacts	4.10-15
Table 4.10-3	Summary of Proposed Project Impacts on Recreation	4.10-18
Table 4.10-4	Temporary Park Closures	4.10-22
Table 4.10-5	Trails and Utility Access Roads near Proposed Project Work Areas	4.10-24

TABLE OF CONTENTS

Table 4.10-6 Summary of Alternative 1 Impacts on Recreation 4.10-31

Table 4.10-7 Summary of Alternative 2 Impacts on Recreation 4.10-35

Table 4.10-8 Active-use City Parks within 1,000 feet of Alternative 3 4.10-40

Table 4.10-9 Summary of Alternative 3 Impacts on Recreation 4.10-43

Table 4.10-10 Summary of Alternative 4 Impacts on Recreation 4.10-~~4849~~

Table 4.10-11 Active-use City Parks within 1,000 feet of Alternative 5 4.10-54

Table 4.10-12 Summary of Alternative 5 Impacts on Recreation 4.10-~~5455~~

Table 4.11-1 Open Hazardous Sites within 0.25 Mile of Proposed Project Segment A 4.11-7

Table 4.11-2 Schools within 0.25 Mile of the Proposed Project..... 4.11-7

Table 4.11-3 Open Hazardous Sites within 0.25 Mile of Stowe and
SR-56 Staging Yards 4.11-10

Table 4.11-4 Applicant Proposed Measures for Hazards and Hazardous
Materials Impacts..... 4.11-16

Table 4.11-5 Summary of Proposed Project Impacts to Hazards
and Hazardous Materials..... 4.11-19

Table 4.11-6 Summary of Alternative 1 Impacts to Hazards and Hazardous Materials .. 4.11-~~43~~

Table 4.11-7 Summary of Alternative 2 Impacts to Hazards and Hazardous Materials 4.11-~~4748~~

Table 4.11-8 Schools within 0.25 Mile of Alternative 3..... 4.11-~~5253~~

Table 4.11-9 Summary of Alternative 3 Impacts to Hazards and Hazardous Materials 4.11-~~5354~~

Table 4.11-10 Summary of Alternative 4 Impacts to Hazards and Hazardous Materials 4.11-~~6061~~

Table 4.11-11 Open Hazardous Sites within 0.25 Mile of Alternative 5 4.11-~~6870~~

Table 4.11-12 Schools within 0.25 Mile of the Alternative 5 Alignment 4.11-~~6870~~

Table 4.11-13 Summary of Alternative 5 Impacts to Hazards and Hazardous Materials 4.11-~~7071~~

Table 4.12-1 Applicant Proposed Measures for Fire and Fuel Management Impacts .. 4.12-15

Table 4.12-2 Wildfire Containment Conflict Index 4.12-17

Table 4.12-3 Summary of Proposed Project Impacts to Fire and Fuels Management 4.12-20

Table 4.12-4 Wildfire Risk and Containment Screening of Project Components
Outside of Modeled Firesheds 4.12-26

Table 4.12-5 Summary of Alternative 1 Impacts to Fire and Fuels Management 4.12-33

Table 4.12-6 Summary of Alternative 2 Impacts to Fire and Fuels Management 4.12-35

Table 4.12-7 Summary of Alternative 3 Impacts to Fire and Fuels Management 4.12-37

Table 4.12-8 Summary of Alternative 4 Impacts to Fire and Fuels Management 4.12-38

Table 4.12-9 Summary of Alternative 5 Impacts to Fire and Fuels Management 4.12-40

Table 4.13-1 Climatological Data Summary in Poway Valley 4.13-3

Table 4.13-2 National and California Ambient Air Quality Standards 4.13-4

Table 4.13-3 Sensitive Receptors within 1,000 Feet of the Proposed Project 4.13-~~98~~

Table 4.13-4 San Diego Air Basin Air Quality Attainment Designations..... 4.13-11

Table 4.13-5 Ambient Air Quality Summary from Nearby Monitoring Stations 4.13-12

Table 4.13-6 Applicant Proposed Measures for Air Quality Impacts..... 4.13-15

Table 4.13-7 Emissions Factors and Equipment Assumptions Used in
Emissions Modeling 4.13-19

Table 4.13-8 Summary of Proposed Project Impacts to Air Quality..... 4.13-19

Table 4.13-9 Estimated Peak Daily Construction Air Pollutant Emissions..... 4.13-23

Table 4.13-10 Summary of Alternative 1 Impacts to Air Quality..... 4.13-32

Table 4.13-11 Summary of Alternative 2 Impacts to Air Quality..... 4.13-36

Table 4.13-12 Sensitive Receptors within 1,000 Feet of Alternative 3 4.13-41

Table 4.13-13 Summary of Alternative 3 Impacts to Air Quality..... 4.13-42

Table 4.13-14 Alternative 3 Estimated Peak Daily Construction Air Pollutant Emissions 4.13-45

Table 4.13-15 Sensitive Receptors within 1,000 Feet of Underground Portion of Alternative 4
within Carmel Mountain Road and East Ocean Air Drive 4.13-48

Table 4.13-16 Summary of Alternative 4 Impacts to Air Quality..... 4.13-~~4849~~

Table 4.13-17 Alternative 4 Estimated Peak Daily Construction Air Pollutant Emissions (~~Only
Alternative 4~~) 4.13-52

TABLE OF CONTENTS

Table 4.13-18 Estimated Peak Daily Construction Air Pollutant Emissions from Simultaneous Construction of Alternative 4 and Proposed Project Segments A, B, and C 4.13-53

Table 4.13-19 Sensitive Receptors within 1,000 Feet of Alternative 5 between P5 and Peñasquitos Substation 4.13-~~5758~~

Table 4.13-20 Summary of Alternative 5 Impacts to Air Quality 4.13-~~5960~~

Table 4.13-21 Alternative 5 Estimated Peak Daily Construction Air Pollutant Emissions 4.13-~~6263~~

Table 4.14-1 Global Warming Potentials of Common Greenhouse Gases..... 4.14-2

Table 4.14-2 California Greenhouse Gas Inventory for 2005-2012 4.14-2

Table 4.14-3 San Diego County Greenhouse Gas Inventory and Emissions Projections... 4.14-3

Table 4.14-4 Climate Change Scoping Plan Actions 4.14-6

Table 4.14-5 Applicant Proposed Measures for Greenhouse Gas Impacts..... 4.14-8

Table 4.14-6 Summary of Proposed Project Impacts to Greenhouse Gases..... 4.14-9

Table 4.14-7 Proposed Project GHG Emissions..... 4.14-11

Table 4.14-8 Proposed Project Conformity with CARB Climate Change Scoping Plan Actions 4.14-13

Table 4.14-9 Summary of Alternative 1 Impacts to Greenhouse Gases..... 4.14-15

Table 4.14-10 Summary of Alternative 2 Impacts to Greenhouse Gases..... 4.14-18

Table 4.14-11 Summary of Alternative 3 Impacts to Greenhouse Gases..... 4.14-20

Table 4.14-12 Alternative 3 GHG Emissions..... 4.14-21

Table 4.14-13 Summary of Alternative 4 Impacts to Greenhouse Gases..... 4.14-23

Table 4.14-14 Alternative 4 GHG Emissions..... 4.14-24

Table 4.14-15 Summary of Alternative 5 Impacts to Greenhouse Gases..... 4.14-~~2627~~

Table 4.14-16 Alternative 5 GHG Emissions..... 4.14-28

Table 4.15-1 Farmland Categories in the Proposed Project Vicinity 4.15-3

Table 4.15-2 Local Agricultural Land Use and Zoning Designations in the Proposed Project Vicinity 4.15-9

Table 4.15-3 Summary of Proposed Project Impacts to Agriculture and Forestry..... 4.15-13

Table 4.15-4 Farmland Impacted by the Proposed Project 4.15-15

Table 4.15-5 Proposed Project Temporary and Permanent Impacts within Areas Zoned for Agricultural Use 4.15-17

Table 4.15-6 Summary of Alternative 1 Impacts to Agriculture and Forestry..... 4.15-20

Table 4.15-7 Summary of Alternative 2 Impacts to Agriculture and Forestry..... 4.15-22

Table 4.15-8 Summary of Alternative 3 Impacts to Agriculture and Forestry..... 4.15-25

Table 4.15-9 Summary of Alternative 4 Impacts to Agriculture and Forestry..... 4.15-27

Table 4.15-10 Summary of Alternative 5 Impacts to Agriculture and Forestry..... 4.15-29

Table 4.16-1 Population Estimates and Projections 4.16-1

Table 4.16-2 Housing Estimates and Projections..... 4.16-2

Table 4.16-3 Locations and Communities for Proposed Project Substations and Staging Yards..... 4.16-3

Table 4.16-4 Summary of Proposed Project Impacts to Population and Housing 4.16-4

Table 4.16-5 Summary of Alternative 1 Impacts to Population and Housing 4.16-6

Table 4.16-6 Summary of Alternative 2 Impacts to Population and Housing 4.16-8

Table 4.16-7 Summary of Alternative 3 Impacts to Population and Housing 4.16-9

Table 4.16-8 Summary of Alternative 4 Impacts to Population and Housing 4.16-10

Table 4.16-9 Summary of Alternative 5 Impacts to Population and Housing 4.16-11

Table 4.17-1 Utilities that Cross or Run Parallel to the Proposed Project 4.17-2

Table 4.17-2 Public Services near the Proposed Project Area 4.17-8

Table 4.17-3 Divisions of the City of San Diego Police Department within the Proposed Project Area..... 4.17-12

Table 4.17-4 Applicant Proposed Measures 4.17-21

Table 4.17-5 Summary of Proposed Project Impacts to Utilities and Public Service Systems 4.17-24

TABLE OF CONTENTS

Table 4.17-6 Summary of Alternative 1 Impacts to Utilities and Public Service Systems 4.17-~~3637~~

Table 4.17-7 Summary of Alternative 2 Impacts to Utilities and Public Service Systems 4.17-~~4243~~

Table 4.17-8 Utilities in Proximity to Alternative 3 4.17-~~4950~~

Table 4.17-9 Parallel Metallic Pipelines along Alternative 3 4.17-~~4950~~

Table 4.17-10 Summary of Alternative 3 Impacts to Utilities and Public Service Systems 4.17-~~5051~~

Table 4.17-11 Utilities in Proximity to Alternative 4 4.17-~~5758~~

Table 4.17-12 Parallel Metal Pipelines along Alternative 4 4.17-~~5758~~

Table 4.17-13 Summary of Alternative 4 Impacts to Utilities and Public Service Systems 4.17-58

Table 4.17-14 Utilities Located in Proximity to Alternative 5 4.17-~~6566~~

Table 4.17-15 Parallel Metal Pipelines along Alternative 5 Alignment 4.17-~~6667~~

Table 4.17-16 Summary of Alternative 5 Impacts to Utilities and Public Service Systems 4.17-~~6768~~

Table 5.2-1 Cumulative Scenario Projects..... 5-4

Table 5.4-1 Cumulative Scenario Projects Near Alternative Alignments..... 5-52

Table 5.4-2 Cumulative Analysis of Alternatives 5-~~6966~~

Table 6.4-1 Summary of All Significant and Unavoidable Impacts for the Proposed Project..... 6-4

Table 6.4-2 Summary of Significant and Unavoidable Impacts by Cable Pole Alternative 6-6

Table 6.4-3 Comparison of the Proposed Project to the Cable Pole Alternatives 6-8

Table 6.4-4 Summary of Significant and Unavoidable Impacts Proposed Project and Alternative 3: Los Peñasquitos Canyon—Mercy Road Alternative..... 6-12

Table 6.4-5 Comparison of the Proposed Project to Alternative 3..... 6-14

Table 6.4-6 Summary of Significant and Unavoidable Impacts Proposed Project and Alternative 4: Segment D 69-kV Partial Underground Alignment 6-~~1718~~

Table 6.4-7 Comparison of the Proposed Project to Alternative 4..... 6-18

Table 6.4-8 Summary of Significant and Unavoidable Impacts Proposed Project and Alternative 5: Pomerado Road to Miramar Area North Combination Underground/Overhead 6-~~2122~~

Table 6.4-9 Comparison of the Proposed Project to Alternative 5..... 6-23

Table 6.5-1 Comparison of the Proposed Project to the No Project Alternative 6-27

Table 7.5-1 Summary of Significant and Unavoidable Impacts of the Proposed Project..... 7-12

Table 8.1-1 Consultant Team..... 8-1

Table 8.1-2 Subconsultant Teams 8-2

Table 8.2-1 Local Agencies and Organizations Consulted 8-4

Table 9.1-1 Mitigation Monitoring and Reporting Plan..... 9-9

TABLE OF CONTENTS

List of Figures

Figure ES.1-1	Project Location	ES-2
Figure ES.5-1	Cable Pole Alternatives Retained for EIR Analysis	ES-14
Figure ES.5-2	Routing Alternatives Retained for EIR Analysis (Alternatives 3, 4, and 5)	ES-15
<u>Figure ES.5-3</u>	<u>Alternative 5 Staging Yards</u>	<u>ES-19</u>
Figure ES.5- 34	No Project Alternative	ES-22
Figure 1.1-1	Project Location	1-2
Figure 1.1-2	Project Alignment Overview	1-3
Figure 2.2-1	Project Alignment: Segment A from Sycamore Canyon Substation to Northwest (Map 1 of 5).....	2-5
Figure 2.2-2	Project Alignment: Segment A Central Portion (Map 2 of 5).....	2-6
Figure 2.2-3	Project Alignment: Segment A Northern Portion and Segment B (Map 3 of 5)	2-7
Figure 2.2-4	Project Alignment: Segment C (Map 4 of 5)	2-8
Figure 2.2-5	Project Alignment: Segment D (Map 5 of 5)	2-9
Figure 2.2-6	Project Alignment: Encina Hub.....	2-10
Figure 2.2-7	Project Alignment: Mission—San Luis Rey Phase Transposition Locations.....	2-11
Figure 2.2-8	Diagram of Proposed 69-kV TSP	2-13
Figure 2.2-9	Diagram of Proposed 138-kV TSP	2-14
Figure 2.2-10	Diagram of Proposed 230-kV Tangent Double-Circuit TSP.....	2-15
Figure 2.2-11	Diagram of Proposed 69-kV Single-Circuit Transition Cable Pole	2-16
Figure 2.2-12	Diagram of Proposed 230-kV Double-Circuit Transition Cable Pole.....	2-17
Figure 2.2-13	Diagram of Proposed 138-kV Steel H-Frame Pole with Distribution Underbuild.....	2-18
Figure 2.2-14	Representative Photographs of Concrete Pier and Micropile Foundations ...	2-19
Figure 2.2-15	Representative Photograph of Bundled Conductor	2-21
Figure 2.2-16	Typical Splice Vault.....	2-22
Figure 2.2-17	Transmission Line Segment A Existing Lattice Tower with H-Frame and Proposed Configuration	2-23
Figure 2.2-18	Transmission Line Segment A Existing Tubular Steel Pole with H-Frame and Proposed Configuration	2-24
Figure 2.2-19	Typical Topped H-Frame Structure.....	2-26
Figure 2.2-20	Diagram of Typical Transmission Line Segment B Duct Bank.....	2-28
Figure 2.2-21	Transmission Line Segment C Existing and Proposed Configurations	2-30
Figure 2.2-22	Transmission Line Segment D Existing and Proposed Configurations	2-33
Figure 2.3-1	Proposed Project Staging Yards and Substation Storage Locations.....	2-39
Figure 2.3-2	Typical Retaining Wall Face	2- 4344
Figure 3.5-1	Cable Pole Alternatives Retained for EIR Analysis	3- 1918
Figure 3.5-2	Routing Alternatives Retained for EIR Analysis (Alternatives 3, 4, and 5)	3- 2523
Figure 3.5-3	Diagram of 69-kV Cable Pole	3- 3029
Figure 3.5-4	Diagram of a 69-kV Double Circuit Underground Duct Bank.....	3- 3130
<u>Figure 3.5-5</u>	<u>Alternative 5 Staging Yards</u>	<u>3-36</u>
Figure 3.5- 56	No Project Alternative (<u>Revised</u>)	3- 3941
Figure 3.6-1	Eliminated Cable Pole Relocation Alternatives (Alternatives 6 and 7)	3- 4850
Figure 3.6-2	Eliminated Pole Relocation Alternatives (Alternatives 8 and 9)	3- 5052
Figure 3.6-3	Eliminated Routing Alternatives (North)	3- 5355
Figure 3.6-4	Eliminated Routing Alternatives (South) (<u>Revised</u>)	3- 5456
Figure 3.6-5	Electrical System Alternative Corridors.....	3- 6569
Figure 4.1-1	Biological Survey Area for the Proposed Project	4.1-4
Figure 4.1-2	Critical Habitat within the Proposed Project Vicinity (<u>Revised</u>)	4.1- 2726
Figure 4.1-3	Preserve Area within the Proposed Project Vicinity.....	4.1- 2827
Figure 4.1-4	Construction Access Road Restrictions within Segment C of the Proposed Project.....	4.1- 7174
Figure 4.2-1	Landscape Character Units	4.2-6

TABLE OF CONTENTS

Figure 4.2-2 Law of Reflection 4.2-23

Figure 4.2-3 Photo-Simulation of Proposed Project Construction 4.2-27

Figure 4.2-4 Key Observation Points 4.2-31

Figure 4.2-5 KOP 1 – Baseline Photo (Before Proposed Project) –
View from Stonebridge Athletic Field Looking Northwest 4.2-32

Figure 4.2-6 KOP 1 – Photosimulation (After Proposed Project) –
View from Stonebridge Athletic Field Looking Northwest 4.2-33

Figure 4.2-7 KOP 2 – Baseline Photo (Before Proposed Project) –
View from Angelique Street Looking Southwest 4.2-34

Figure 4.2-8 KOP 2 – Photosimulation (After Proposed Project) –
View from Angelique Street Looking Southwest 4.2-35

Figure 4.2-9 KOP 3 – Baseline Photo (Before Proposed Project) –
View from Los Peñasquitos Canyon Preserve Trans County Trail
Looking North 4.2-36

Figure 4.2-10 KOP 3 – Photosimulation (After Proposed Project) – View from Los
Peñasquitos Canyon Preserve Trans
County Trail Looking North..... 4.2-37

Figure 4.2-11 KOP 4 – Baseline Photo (Before Proposed Project) –
View from Quinton Road Looking Southeast 4.2-38

Figure 4.2-12 KOP 4 – Photosimulation (After Proposed Project) –
View from Quinton Road Looking Southeast 4.2-39

Figure 4.2-13 KOP 5 – Baseline Photo (Before Proposed Project) –
View from Bassmore Drive Looking Northwest 4.2-40

Figure 4.2-14 KOP 5 – Photosimulation (After Proposed Project) –
View from Bassmore Drive Looking Northwest 4.2-41

Figure 4.2-15 KOP 6 – Baseline Photo (Before Proposed Project) –
View from Black Mountain Open Space Park Trail Looking Northwest..... 4.2-42

Figure 4.2-16 KOP 6 – Photosimulation (After Proposed Project) –
View from Black Mountain Open Space Park Trail Looking Northwest..... 4.2-43

Figure 4.2-17 KOP 7 – Baseline Photo (Before Proposed Project) –
View from Maler Road Looking Northwest 4.2-44

Figure 4.2-18 KOP 7 – Photosimulation (After Proposed Project) –
View from Maler Road Looking Northwest 4.2-45

Figure 4.2-19 KOP 8 – Baseline Photo (Before Proposed Project) –
View from Black Mountain Ranch Park Looking North-Northwest 4.2-46

Figure 4.2-20 KOP 8 – Photosimulation (After Proposed Project) –
View from Black Mountain Ranch Park Looking North-Northwest 4.2-47

Figure 4.2-21 KOP 9 – Baseline Photo (Before Proposed Project) – View from Del Mar
Mesa Preserve Trails at Peñasquitos Junction Looking North..... 4.2-48

Figure 4.2-22 KOP 9 – Photosimulation (After Proposed Project) – View from Del Mar
Mesa Preserve Trails at Peñasquitos Junction Looking North..... 4.2-49

Figure 4.2-23 KOP 10 – Baseline Photo (Before Proposed Project) –
View from Del Mar Mesa Preserve Trail Looking Southwest 4.2-50

Figure 4.2-24 KOP 10 – Photosimulation (After Proposed Project) –
View from Del Mar Mesa Preserve Trail Looking Southwest 4.2-51

Figure 4.2-25 KOP 11 – Baseline Photo (Before Proposed Project) –
View from LPCP Trail Looking West-Northwest 4.2-52

Figure 4.2-26 KOP 11 – Photosimulation (After Proposed Project) –
View from LPCP Trail Looking West-Northwest 4.2-53

Figure 4.2-27 KOP 12 – Baseline Photo (Before Proposed Project) –
View from Gablewood Way Looking East-Northeast 4.2-54

Figure 4.2-28 KOP 12 – Photosimulation (After Proposed Project) –
View from Gablewood Way Looking East-Northeast 4.2-55

TABLE OF CONTENTS

Figure 4.2-29 KOP 13 – Baseline Photo (Before Proposed Project) – View from Heather Run Looking East..... 4.2-56

Figure 4.2-30 KOP 13 – Photosimulation (After Proposed Project) – View from Heather Run Looking East..... 4.2-57

Figure 4.2-31 KOP 14 – Baseline Photo (Before Proposed Project) – View from Briarlake Wood Road Looking West-Southwest 4.2-58

Figure 4.2-32 KOP 14 – Photosimulation (After Proposed Project) – View from Briarlake Wood Road Looking West-Southwest 4.2-59

Figure 4.2-33 KOP 15 – Baseline Photo (Before Proposed Project) – View from Manorgate Drive Looking East 4.2-60

Figure 4.2-34 KOP 15 – Photosimulation (After Proposed Project) – View from Manorgate Drive Looking East 4.2-61

Figure 4.3--1 Potential for Buried Cultural Deposits along the Proposed Project Alignment (1 of 5) 4.3-9

Figure 4.3-2 Potential for Buried Cultural Deposits along the Proposed Project Alignment (2 of 5) 4.3-10

Figure 4.3-3 Potential for Buried Cultural Deposits along the Proposed Project Alignment (3 of 5) 4.3-11

Figure 4.3-4 Potential for Buried Cultural Deposits along the Proposed Project Alignment (4 of 5) 4.3-12

Figure 4.3-5 Potential for Buried Cultural Deposits along the Proposed Project Alignment (5 of 5) 4.3-13

Figure 4.3-6 Potential for Buried Cultural Deposits at Encina Hub, Mission Substation, and San Luis Rey Substation 4.3-15

Figure 4.3-7 Potential for Buried Cultural Deposits at Mission – San Luis Rey Phase Transposition Work Areas 4.3-16

Figure 4.3-8 Potential for Buried Cultural Deposits along Underground Portion of Alternative 3 (1 of 2) 4.3-~~45~~43

Figure 4.3-9 Potential for Buried Cultural Deposits along Underground Portion of Alternative 3 (2 of 2) 4.3-~~46~~44

Figure 4.3-10 Alternative 4 Potential for Buried Cultural Deposits along Carmel Mountain Road and East Ocean Air Drive 4.3-~~51~~49

Figure 4.3-11 Potential for Buried Cultural Deposits along Alternative 5 (1 of 3) 4.3-57

Figure 4.3-12 Potential for Buried Cultural Deposits along Alternative 5 (2 of 3) (Revised) 4.3-58

Figure 4.3-13 Potential for Buried Cultural Deposits along Alternative 5 (3 of 3) (Revised) 4.3-59

Figure 4.4-1 Paleontological Sensitivity of the Proposed Project Alignment..... 4.4-3

Figure 4.4-2 Paleontological Sensitivity of the Encina Hub, Mission Substation, and San Luis Rey Substation..... 4.4-4

Figure 4.4-3 Paleontological Sensitivity of Mission—San Luis Rey Phase Transposition Work Areas 4.4-5

Figure 4.4-4 Alternative 1 Paleontological Sensitivity..... 4.4-19

Figure 4.4-5 Alternative 2 Paleontological Sensitivity..... 4.4-21

Figure 4.4-6 Paleontological Sensitivity of Alternative Alignments 4.4-25

Figure 4.4-7 Paleontological Sensitivity of Alternative 5 Staging Yards 4.4-30

Figure 4.5-1 Geologic Units in the Proposed Project Area (Transmission Corridor and Staging Yards) 4.5-~~34~~34

Figure 4.5-2 Geologic Units in the Proposed Project Area (Encina Hub) 4.5-~~45~~45

Figure 4.5-3 Geologic Units in the Proposed Project Area (Mission—San Luis Rey Phase Transposition) 4.5-~~56~~56

Figure 4.5-4 Soil Units in the Proposed Project Area (Map 1 of 3) 4.5-~~11~~13

Figure 4.5-5 Soil Units in the Proposed Project Area (Map 2 of 3) 4.5-~~12~~14

Figure 4.5-6 Soil Units in the Proposed Project Area (Map 3 of 3) 4.5-~~13~~15

TABLE OF CONTENTS

Figure 4.5-7 Major Faults in the Proposed Project Region..... 4.5-~~16~~18

Figure 4.5-8 Mineral Resource Classifications Near the Proposed Project 4.5-~~21~~23

Figure 4.5-9 Geologic Units of Alternative 3 Alignment..... 4.5-~~49~~52

Figure 4.5-10 Soil Units of Alternative 3 Alignment..... 4.5-~~51~~53

Figure 4.5-11 Geologic Units of Alternative 4 Alignment..... 4.5-~~60~~62

Figure 4.5-12 Soil Units of Alternative 4 Alignment..... 4.5-~~61~~63

Figure 4.5-13 Geologic Units of Alternative 5 Alignment..... 4.5-~~71~~72

Figure 4.5-14 Geologic Units of Alternative 5 Staging Yards 4.5-73

Figure 4.5-14-15 Soil Units of Alternative 5 Alignment (Revised) 4.5-73-75

Figure 4.5-16 Soil Units of Alternative 5 Staging Yards..... 4.5-77

Figure 4.6-1 Watersheds in the Proposed Project Area..... 4.6-4

Figure 4.6-2 Surface Waters in the Proposed Project Area..... 4.6-~~75~~

Figure 4.6-3 FEMA Flood Zones in the Proposed Project Area..... 4.6-~~87~~

Figure 4.6-4 Groundwater Basins in the Proposed Project Vicinity 4.6-~~121~~1

Figure 4.6-5 FEMA Flood Zones in the Project Alternative Areas (Revised) 4.6-~~46~~45

Figure 4.6-6 Surface Waters in the Project Alternative Areas (Revised) 4.6-~~47~~46

Figure 4.6-7 FEMA Flood Zones in the Alternative 5 Staging Yard Areas 4.6-58

Figure 4.6-7 8 Surface Waters in the No Project Alternative Area (Revised) 4.6-67

Figure 4.7-1 Traffic Count Locations (1 of 3)..... 4.7-~~56~~

Figure 4.7-2 Traffic Count Locations (2 of 3)..... 4.7-~~67~~

Figure 4.7-3 Traffic Count Locations (3 of 3)..... 4.7-~~78~~

Figure 4.7-4 Airports in the Proposed Project Vicinity 4.7-9

Figure 4.7-5 Bikeways in the Vicinity of the Proposed Project (Map 1 of 4) 4.7-11

Figure 4.7-6 Bikeways in the Vicinity of the Proposed Project (Map 2 of 4) 4.7-12

Figure 4.7-7 Bikeways in the Vicinity of the Proposed Project (Map 3 of 4) 4.7-13

Figure 4.7-8 Bikeways in the Vicinity of the Proposed Project (Map 4 of 4) 4.7-14

Figure 4.7-9 Transit in the Vicinity of the Proposed Project (Map 1 of 4) 4.7-18

Figure 4.7-10 Transit in the Vicinity of the Proposed Project (Map 2 of 4) 4.7-19

Figure 4.7-11 Transit in the Vicinity of the Proposed Project (Map 3 of 4) 4.7-20

Figure 4.7-12 Transit in the Vicinity of the Proposed Project (Map 4 of 4) 4.7-21

Figure 4.7-13 Traffic Count Locations for Project Alternatives 3, 4, and 5 4.7-~~64~~66

Figure 4.7-14 Bikeways in the Vicinity of Project Alternatives 3, 4, and 5..... 4.7-~~65~~67

Figure 4.7-15 Transit in the Vicinity of Project Alternatives 3, 4, and 5..... 4.7-~~66~~68

Figure 4.8-1 Noise Survey Locations..... 4.8-5

Figure 4.8-2 Noise-Sensitive Receptors near the
Proposed Project Transmission Alignment (1 of 5) 4.8-7

Figure 4.8-3 Noise-Sensitive Receptors near the
Proposed Project Transmission Alignment (2 of 5) 4.8-8

Figure 4.8-4 Noise-Sensitive Receptors near the
Proposed Project Transmission Alignment (3 of 5) 4.8-9

Figure 4.8-5 Noise-Sensitive Receptors near the
Proposed Project Transmission Alignment (4 of 5) 4.8-10

Figure 4.8-6 Noise-Sensitive Receptors near the
Proposed Project Transmission Alignment (5 of 5) 4.8-11

Figure 4.8-7 Sensitive Receptors within 1,000 feet of Alternative 3 (Map 1) 4.8-~~51~~53

Figure 4.8-8 Sensitive Receptors within 1,000 feet of Alternative 3 (Map 2) 4.8-~~52~~54

Figure 4.8-9 Sensitive Receptors within 1,000 feet of Alternative 4..... 4.8-~~59~~61

Figure 4.8-10 Sensitive Receptors within 1,000 feet of Alternative 5 (Map 1) 4.8-~~67~~69

Figure 4.8-11 Sensitive Receptors within 1,000 feet of Alternative 5 (Map 2) (Revised) ... 4.8-~~68~~70

Figure 4.8-12 Sensitive Receptors within 1,000 feet of Alternative 5 (Map 3) (Revised) ... 4.8-~~69~~71

Figure 4.9-1 Land Use Designations in the Proposed Project Transmission
Alignment Vicinity 4.9-3

Figure 4.9-2 Land Use Designations in Other Proposed Project Areas..... 4.9-4

TABLE OF CONTENTS

Figure 4.10-1 Recreational Areas in the Proposed Project Vicinity and Surrounding Region (Map 1 of 4)..... 4.10-3

Figure 4.10-2 Recreational Areas in the Proposed Project Vicinity and Surrounding Region (Map 2 of 4) (Revised) 4.10-4

Figure 4.10-3 Recreational Areas in the Proposed Project Vicinity and Surrounding Region (Map 3 of 4) (Revised) 4.10-5

Figure 4.10-4 Recreational Areas in the Proposed Project Vicinity and Surrounding Region (Map 4 of 4)..... 4.10-6

Figure 4.10-5 Recreational Areas in the Vicinity of Project Alternatives 3, 4, and 5 (Map 1 of 2) (Revised)..... 4.10-41

Figure 4.10-6 Recreational Areas in the Vicinity of Project Alternatives 3, 4, and 5 (Map 2 of 2) (Revised)..... 4.10-42

Figure 4.10-7 Recreational Areas in the Vicinity of the No Project Alternative (Revised).....4.10-~~59~~60

Figure 4.11-1 Open Hazardous Sites within 0.25 Mile of the Proposed Project (Revised)..... 4.11-6

Figure 4.11-2 Open Hazardous Sites within 0.25 Mile of Alternative 5 (Revised) 4.11-69

Figure 4.11-3 Location of MCAS Miramar in Relation to the No Project Alternative (Revised).....4.11-~~80~~82

Figure 4.12-1 Fire Hazard Severity Zones for Proposed Project Transmission Alignment 4.12-3

Figure 4.12-2 Fire Hazard Severity Zones for Other Proposed Project Areas 4.12-4

Figure 4.12-3 Firehatched Boundaries..... 4.12-8

Figure 4.12-4 Wildfire Events in Proposed Project Area Since 1940 4.12-10

Figure 4.12-5 Fire Behavior Trend Model Results for the Proposed Project..... 4.12-21

Figure 4.12-6 Fire Behavior Trend at Encina Hub 4.12-23

Figure 4.12-7 Wildfire Containment Conflict Model..... 4.12-25

Figure 4.12-8 Firehatched for the Proposed Project Alternatives..... 4.12-34

Figure 4.15-1 Agricultural Resources in the Proposed Project Vicinity and Surrounding Region (Map 1 of 4)..... 4.15-4

Figure 4.15-2 Agricultural Resources in the Proposed Project Vicinity and Surrounding Region (Map 2 of 4)..... 4.15-5

Figure 4.15-3 Agricultural Resources in the Proposed Project Vicinity and Surrounding Region (Map 3 of 4)..... 4.15-6

Figure 4.15-4 Agricultural Resources in the Proposed Project Vicinity and Surrounding Region (Map 4 of 4) 4.15-7

Figure 4.17-1 Locations of Fire Stations, Police Stations, and Hospitals near the Proposed Project Area..... 4.17-6

Figure 4.17-2 Locations of Fire Stations, Police Stations, and Hospitals near the Proposed Project Area..... 4.17-7

Figure 5.2-1 Cumulative Projects near the Proposed Project..... 5-13

Figure 5.2-2 Cumulative Projects Near Ancillary Work Areas 5-15

Figure 5.3-1 Segment D Representative View – Existing Conditions..... 5-23

Figure 5.3-2 Segment D Representative View – Cumulative Impact..... 5-24

Figure 5.4-1 Cumulative Projects near Project Alternatives (Revised) 5-63

Figure 7.1-1 Electromagnetic Spectrum 7-3