



**SDG&E Proposed
Sycamore-Peñasquitos 230-kV
Transmission Line Project**
Application No. A. 14-04-011



**Informational Workshops
on Draft EIR**

California Public Utilities Commission

September 28 and 29, 2015

Workshop Presentation Agenda



- **Introduction of Speakers; Purpose and Overview of Workshop**
(Allison Turner, Katz & Associates)
- **Project Milestones; CPUC Process After Draft EIR Comment Period**
(Billie Blanchard, CPUC)
- **Description of Proposed Project; Impacts Identified; Alternatives Screening; Draft EIR Alternatives**
(Jeff Thomas, Panorama Environmental)

The Purpose of the Workshop



- To explain the Draft EIR review process
- To answer questions about the Proposed Project and alternatives in the Draft EIR
- To answer questions about the Draft EIR analysis
- To accept written comments on the Draft EIR

Project Milestones



- **SDG&E Application to CPUC**
 - Submitted application for a Certificate of Public Convenience and Necessity (CPCN) in April 2014
 - CPUC assignments: Commissioner Picker and Administrative Law Judge Yacknin
 - Application deemed complete in July 2014
- **CEQA Scoping Process (August to September 2014)**
 - Scoping meetings in August in San Diego
 - Scoping report issued in September 2014
- **EIR Analysis and Alternatives Screening Process**
 - September 2014 to August 2015
- **Draft EIR released September 17, 2015**

Process After Draft EIR Comment Period

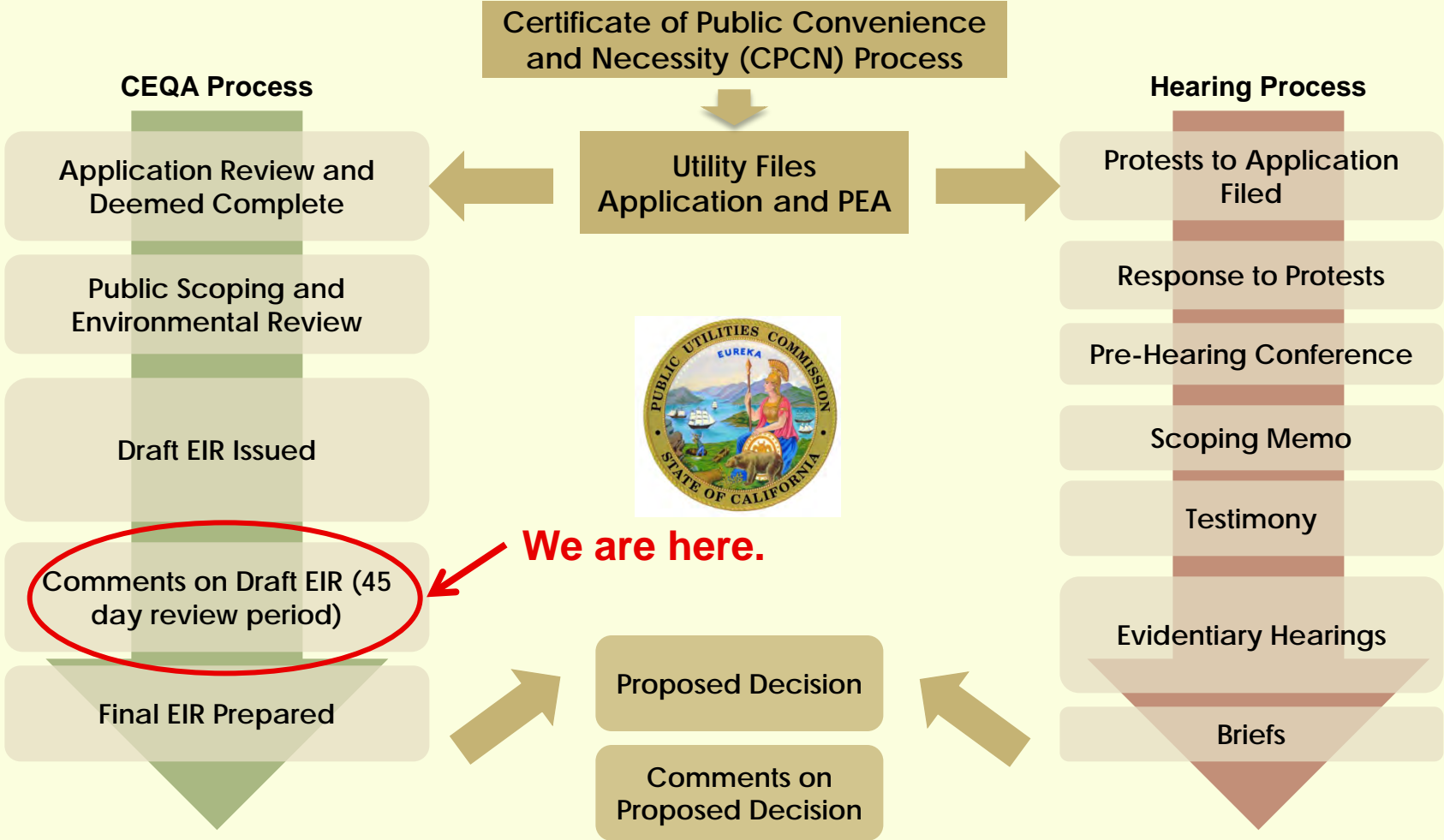


- **Final EIR** is estimated to be released in December 2015. It will include responses to all comments, and revisions if required.

CPUC Process:

- CPUC ALJ will be conducting a **Proceeding** on the project, including testimony, filing of briefs, and possibly Evidentiary Hearings
 - A schedule for the Proceeding will be established by the ALJ
- ALJ prepares **Proposed Decision** for consideration by full Commission.
 - CPUC vote on Proposed Decision anticipated early to mid-2016
 - EIR is referenced and the EIR is Certified in the **CPUC Decision**

The EIR and CPUC Processes



What is the Proposed Project?



The Proposed Project includes the following major components:

- **New 230-kV transmission line** between Sycamore Canyon Substation and Peñasquitos Substation within existing SDG&E and City of San Diego franchise right-of-ways for 16.7 miles
- **Substation modifications** at Peñasquitos, Sycamore Canyon, Chicarita, Mission, and San Luis Rey Substations
- **Minor modifications of existing transmission lines** at the Encina Hub, and between Mission Substation and Peñasquitos Junction

Additional Proposed Project details, maps and diagrams located in DEIR Chapter 2 and Appendix A.

Proposed Project Location



- Additional Proposed Project maps and diagrams in DEIR Chapter 2.
- Detailed maps of the Proposed Project components located in DEIR Appendix A.

Environmental Impacts Defined in the Draft EIR



- **Significant unavoidable impacts that cannot be mitigated to less than significant levels:**
 - **Aesthetics:** Transmission lines, marker balls, and retaining walls would impact visual quality (DEIR Sections 4.2 and 5.3.3)
 - **Transportation and Traffic:** Impacts to traffic level of service from construction vehicles and activities, temporary parking loss at Black Mountain Ranch Community Park (DEIR Sections 4.7 and 5.3.8)
 - **Noise:** Substantial temporary construction noise from equipment and helicopters. Corona noise over the life of the project. (DEIR Sections 4.8 and 5.3.9)
 - **Recreation:** Construction and operational impacts to parks and trails (e.g. Black Mountain Ranch Community Park) due to closures, visual, and noise. (DEIR Sections 4.10 and 5.3.10)

Significant unavoidable impacts of the Proposed Project discussed in DEIR Chapters 4 and 5.

Environmental Impacts Defined in the Draft EIR



- **Impacts in the following resource areas are defined as less than significant with mitigation:**
 - Biological Resources
 - Paleontological Resources
 - Geology, Soils, and Mineral Resources
 - Hydrology and Water Quality
 - Hazards and Hazardous Materials
 - Cultural Resources
 - Fire and Fuels Management
 - Air Quality
 - Greenhouse Gas Emissions
 - Agriculture and Forestry
 - Utilities and Public Service Systems

Proposed Project impacts are discussed in DEIR Chapters 4 and 5.

Cumulative Impacts Defined in the Draft EIR



- Proposed Project impacts contribute considerably to cumulative impacts.
 - Aesthetics – visual quality
 - Noise – construction and corona noise
 - Recreation - temporary park access loss, long-term impacts on the value of public recreational resources
 - Traffic - road closures, increased construction traffic, emergency access interference

Representative View of Proposed Project Segment D and future Mission-Peñasquitos 230-kV Transmission Line in Los Peñasquitos Canyon



Proposed Project cumulative impacts are discussed in DEIR Chapter 5.

Alternatives Screening Process



- 41 alternatives were evaluated; 36 were eliminated after considering project objective, feasibility, and environmental criteria
- Alternatives Screening Report describes alternatives considered and rationale for analysis or elimination (**EIR Appendix D**)
- Chapter 3 of the Draft EIR summarizes this screening process and results



Alternatives Considered in the Draft EIR



- **Alternative 1:** Eastern Cable Pole at Carmel Valley Road
 - Locates the cable pole immediately south of Carmel Valley Road and avoids cable pole and underground transmission line in Black Mountain Ranch Community Park
- **Alternative 2:** Eastern Cable Pole at Pole P40 and Underground Alignment through City Open Space or City Water Utility Service Road
 - Locates the cable pole 300 feet south of Carmel Valley Road and avoids the cable pole and underground transmission line in Black Mountain Ranch Community Park

The five retained alternatives are described in DEIR Chapter 3. Detailed maps of each alternative are located in DEIR Appendix E. The analysis of alternatives is located in the resource topic sections in DEIR Chapter 4. The comparison of alternatives is located in DEIR Chapter 6.

Alternatives Considered in the Draft EIR



- **Alternative 3: Los Peñasquitos Canyon Preserve-Mercy Road Underground**
 - Underground routing alternative from Ivy Hill Road to just west of Peñasquitos Junction
 - Avoids impacts from northern half of Segment A and all of Segments B and C including aesthetics, traffic, noise, and recreation impacts



Alternatives Considered in the Draft EIR

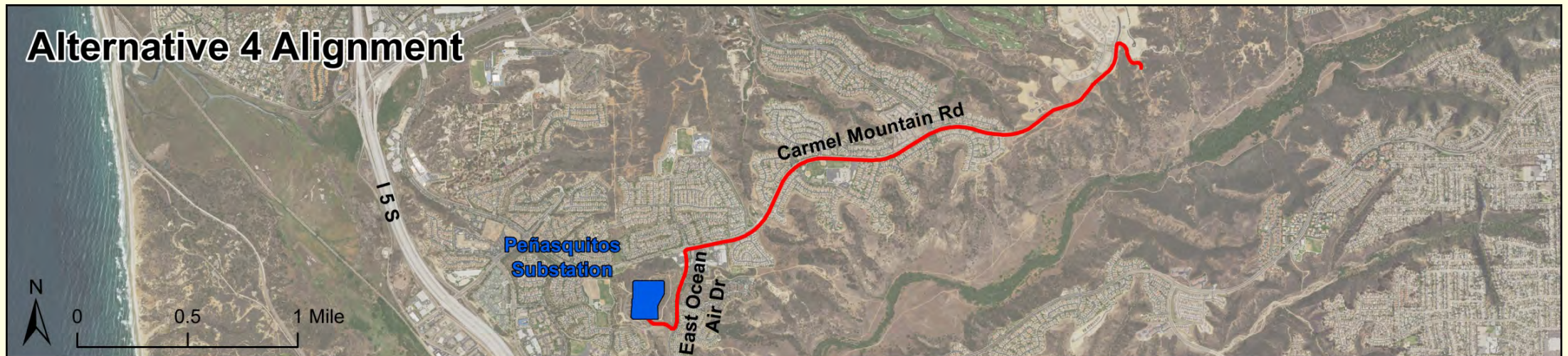


- **Alternative 3: Los Peñasquitos Canyon Preserve-Mercy Road Underground**
 - Road widths adequately sized for underground duct bank installation
 - Scripps Poway Parkway, Mercy Road, and Black Mountain Road are four-lane boulevards that have center medians for approximately 3 miles.
 - Park Village Road is a four-lane boulevard with a center median for approximately 2 miles along the eastern portion of the alternative alignment
 - Park Village Road transitions to a two-lane road for approximately 0.6 mile with parking along both sides at the western end of the alignment resulting in a road width that is similar to a four-lane road.
 - Modified version of a prior Sunrise Powerlink alternative

Alternatives Considered in the Draft EIR



- **Alternative 4: Segment D 69-kV Partial Underground Alignment**
 - Underground double-circuit 69-kV power line within Carmel Mountain Road
 - Eliminates new tubular steel pole installation along 2.8 miles of Segment D thereby reducing or eliminating aesthetics, biological resources, noise, and recreation impacts in Segment D of the Proposed Project



Alternatives Considered in the Draft EIR



- **Alternative 4: Segment D 69-kV Partial Underground Alignment**
 - Road widths adequately sized for underground duct bank installation.
 - Carmel Mountain Road is a relatively new two-lane road at the east end of the underground alignment where the power line would enter the street.
 - Carmel Mountain Road becomes a divided boulevard with four road lanes and a center median where it crosses Timber Brook Lane.
 - Suggested by members of the public during scoping.

Alternatives Considered in the Draft EIR



- **Alternative 5: Pomerado Road to Miramar Area North Combination Underground/Overhead**
 - Routing alternative in new alignment south of the Proposed Project that eliminates all Proposed Project Segment impacts
 - Majority of transmission line would be underground (11.5 miles)
 - East and west portions would be overhead in existing SDG&E ROW (2.8 miles)

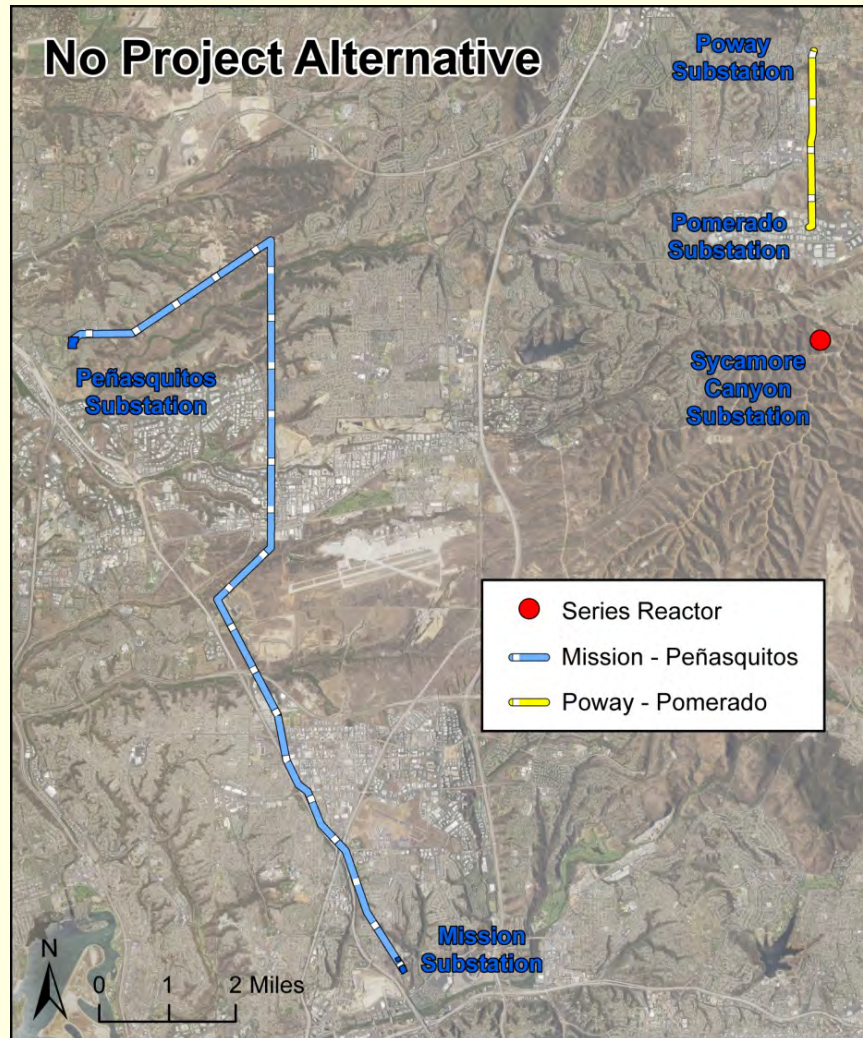


Alternatives Considered in the Draft EIR



- **Alternative 5: Pomerado Road to Miramar Area North Combination Underground/Overhead**
 - Road widths adequately sized for underground duct bank installation.
 - Stonebridge Parkway is a four-lane boulevard with a center median.
 - Pomerado Road has two travel lanes, a bike lane, and a shoulder, giving it the same width as a three-lane road.
 - Miramar Road is a major thoroughfare with six travel lanes plus a turn lane.
 - The industrial roads north of Miramar Road are two-lane roads with parking on each side resulting in a road width that is equivalent to a four-lane road.
 - Modified version of a prior Sunrise Powerlink alternative.

Alternatives Considered in the Draft EIR



■ No Project Alternative

- Represents likely actions Applicant would take if project not approved
- Does not achieve project objectives
- Three upgrades are considered to comply with NERC reliability criteria:
 - Mission—Peñasquitos 230-kV Transmission Line
 - Second Poway—Pomerado 69-kV Power Line
 - Series Reactor at Sycamore Canyon Substation

The No Project Alternative is described in DEIR Chapter 3 and analyzed in Chapter 4.

Environmentally Superior Alternative



- **Alternative 5:** Pomerado Road to Miramar Area North Combination Underground/Overhead
 - Substantially reduces significant and unavoidable impacts to visual quality by locating the transmission line underground
 - Eliminates significant and unavoidable impacts to recreation and parking access
 - Minimizes long-term corona noise by locating the transmission line underground
 - Minimizes impacts to sensitive habitats and special-status species by constructing the transmission line in disturbed areas
 - Results in additional traffic impacts during construction
 - Increased vehicle trips and temporary road closures

The Environmentally Superior Alternative is discussed in DEIR Chapter 6.

Overall Ranking of Alternatives



1. Alternative 5 – **Environmentally Superior Alternative**
2. Combination of Alternative 3 and Alternative 4 with Proposed Project
3. No Project Alternative
4. Alternative 3 with Proposed Project
5. Combination of Alternative 1 and Alternative 4 with Proposed Project
6. Combination of Alternative 2 and Alternative 4 with Proposed Project
7. Alternative 4 with Proposed Project
8. Alternative 1 with Proposed Project
9. Alternative 2 with Proposed Project
10. Proposed Project

The ranking and comparison of alternatives is presented in DEIR Chapter 6.

Comments on Draft EIR Must be Received or Postmarked by November 2, 2015



Written comments may be submitted at any workshop or by mail, email, or fax.

By Mail:	California Public Utilities Commission c/o Panorama Environmental, Inc. 1 Embarcadero Center, Suite 740 San Francisco, CA 94111
By E-mail:	sycamorepenasquitos@panoramaenv.com
By Fax:	(650) 373-1211

For More Information



- **Check our Internet website:**

http://www.cpuc.ca.gov/Environment/info/panoramaenv/Sycamore_Penasquitos/index.html

- **Information Repositories:**

- Eight libraries have project information

- **E-mail us at:**

- sycamorepenasquitos@panoramaenv.com

- **Call the Project Information Line:**

- (650) 373-1200



Informal Discussion with EIR Preparers