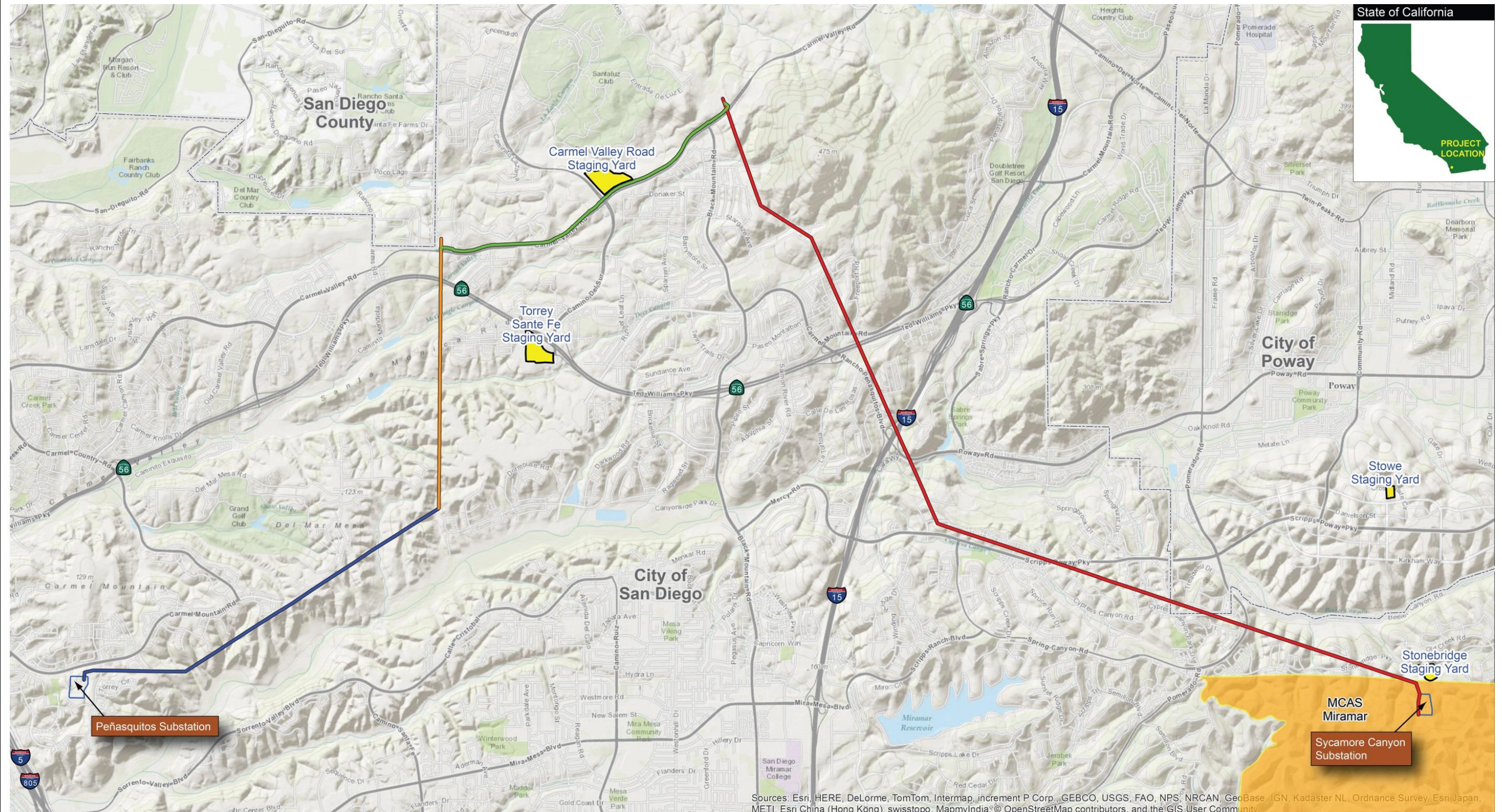


Sycamore Peñasquitos 230 Kilovolt Transmission Line Project Overview



Sources: Esri, HERE, DeLorme, TomTom, Intermap, increment P Corp., GEBCO, USGS, FAO, NPS, NRCAN, GeoBase, IGN, Kadaster NL, Ordnance Survey, Esri Japan, METI, Esri China (Hong Kong), swisstopo, MapyIndia, © OpenStreetMap contributors, and the GIS User Community

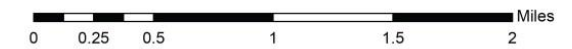
SOURCES: Esri 2014, USDA Farm Service Agency 2012, SDG&E 2014, and Panorama Environmental, Inc. 2014

Scale: 1:45,000

LEGEND

- Segment A - New 230 kV Overhead - New Poles and Conductor - 8.31 Miles
- Segment B - New 230 kV Underground - New Duct and Cable - 2.84 Miles
- Segment C - New 230 kV Overhead - New Conductor on Mostly Existing Structures - 2.19 Miles
- Segment D - New 230 kV Overhead - New Poles and New Conductor on Existing Structures - 3.34 Miles

- Staging Yard
- MCAS Miramar
- City Boundary



PANORAMA
ENVIRONMENTAL, INC.