



**SDG&E Proposed  
Sycamore-Peñasquitos 230-kV  
Transmission Line Project**  
Application No. A. 14-04-011



**Presentation to Mira Mesa  
Community Planning Group**

California Public Utilities Commission

September 19, 2016

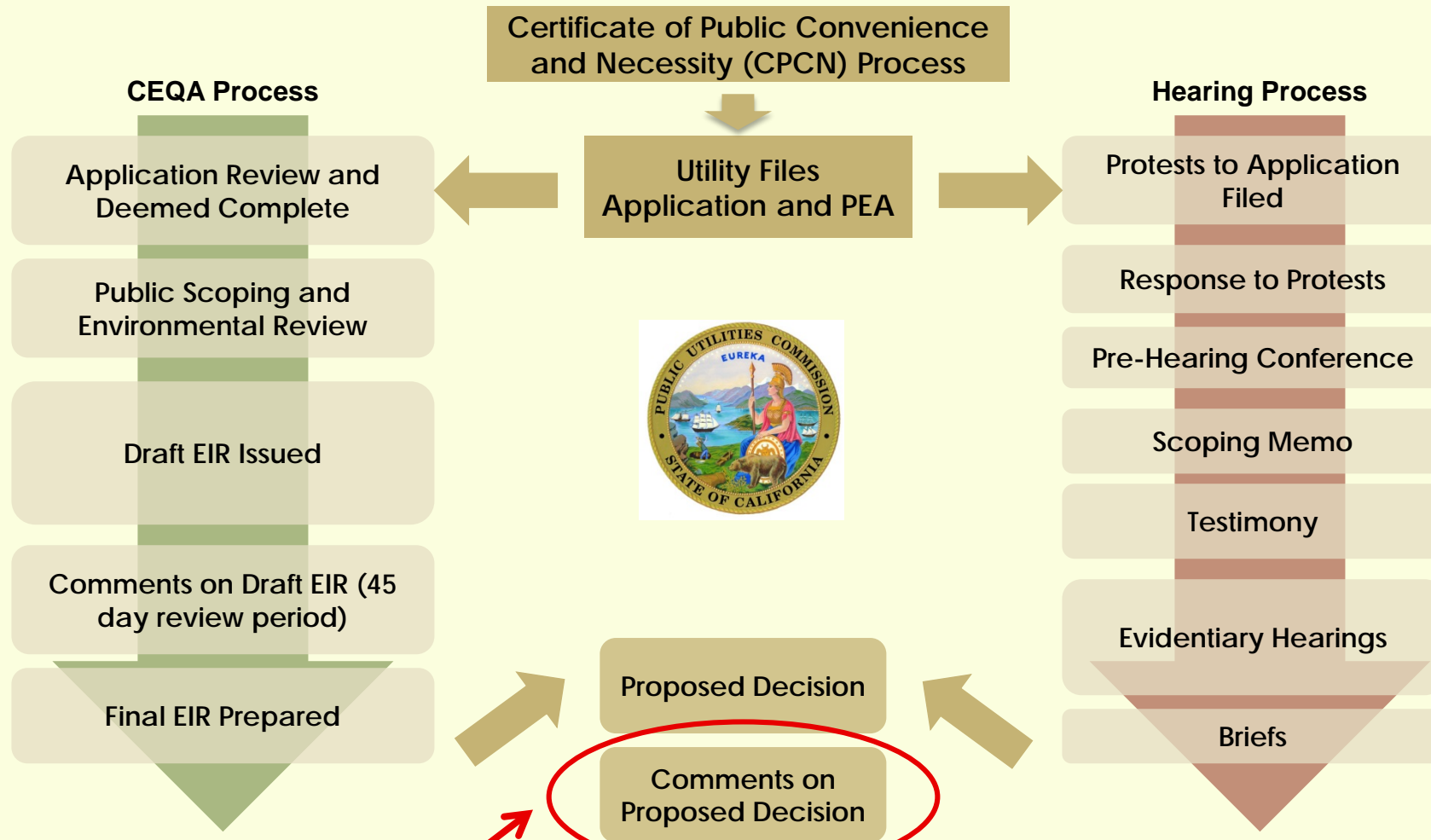
# Overview

---



- CPUC Process for the Sycamore-Peñasquitos Project
- Public notification of Draft EIR and comments received from MMCPG
- Description of Alternative 5 (Environmentally Superior Alternative) and Mitigation Measures to reduce significant impacts
- Project Approval and Construction Schedule

# CPUC Processes



We are here.

# CPUC Hearing Process

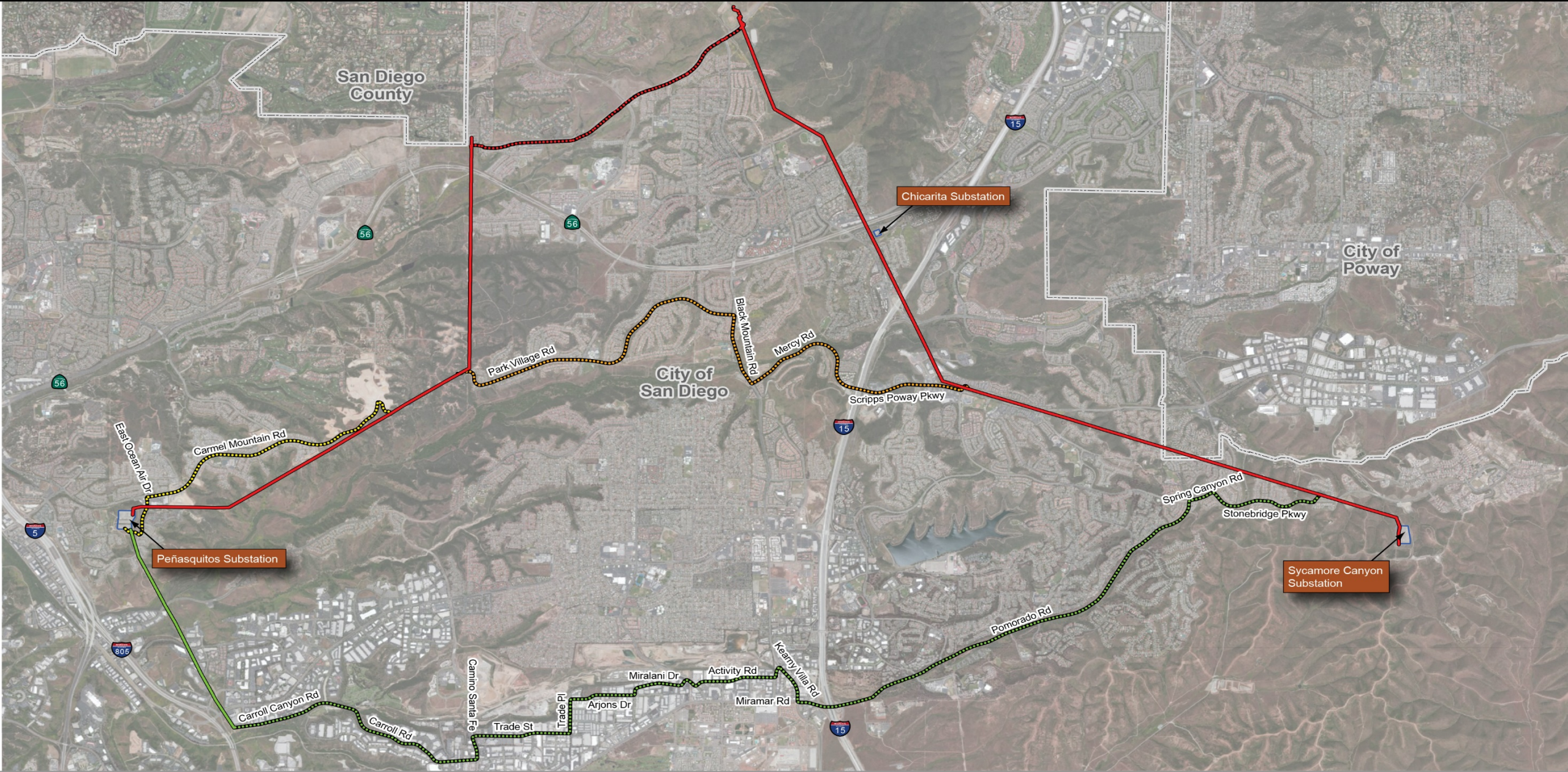


- SDG&E submitted application for a Certificate of Public Convenience and Necessity (CPCN) in April 2014
- CPUC ALJ conducted a **Proceeding** on the project, including testimony and filing of briefs
- ALJ prepared a **Proposed Decision** for consideration by full Commission.
  - Proposed Decision was published on August 30, 2016
    - Would grant SDG&E a CPCN to construct Alternative 5
  - CPUC vote anticipated at Commission's September 29, 2016 Business Meeting

# CPUC CEQA Process



- SDG&E Application deemed complete in July 2014
- **CEQA Scoping Process** (August to September 2014)
  - Three scoping meetings held in August in San Diego
- **Draft EIR released September 17, 2015**
  - EIR included 5 alternatives including an Environmentally Superior Alternative (Alternative 5)
  - EIR public review period for 45 days + 2 week extension granted to Scripps Miramar Ranch (SMR), Miramar Ranch North (MRN), and Mira Mesa (MM) Community Planning Groups (CPG)
- **Final EIR published March 7, 2016**
  - Final EIR included responses to comments received from the public including a joint letter from the SMRCPG and MMCPG
  - 127 comments in support of Alternative 5



SOURCES: Esri 2015, SDG&E 2015, and Panorama Environmental, Inc. 2015

Scale: 1:50,000

**LEGEND**

- Proposed Alignment (overhead)
- - - Proposed Alignment (underground)
- Alternative 3: Los Peñasquitos Canyon Preserve - Mercy Road Underground Alternative
- Alternative 4: Segment D 69kV Partial Underground Alignment
- Alternative 5: Pomorato Road to Miramar Area North Combination Underground/Overhead Alternative (overhead)
- - - Alternative 5: Pomorato Road to Miramar Area North Combination Underground/Overhead Alternative (underground)
- City Boundary



# Environmentally Superior Alternative



- **Alternative 5:**
  - Substantially reduces significant and unavoidable impacts to visual quality
  - Eliminates significant and unavoidable impacts to recreation and parking access
  - Minimizes long-term corona noise
  - Minimizes impacts to sensitive habitats and special-status species by constructing the transmission line in disturbed areas
  - Reduces conflicts with residential neighborhoods and schools by locating more of the transmission line in commercial and industrial areas
  - Results in additional temporary traffic impacts during construction
    - Increased vehicle trips and temporary road closures

# Public Notification of Draft EIR



- Notified all property owners within 1,000 feet of the Proposed Project and Alternative alignments
  - General Order 131-D requires notification for property owners within 300 feet
  - The notification exceeded all legal and regulatory requirements
- Provided copies of the EIR to the State Clearinghouse for distribution to agencies
- Printed notices in the newspaper
- Provided copies of the EIR to local libraries including the Mira Mesa library
- Copies also provided to individuals upon request



# Comments on Draft EIR

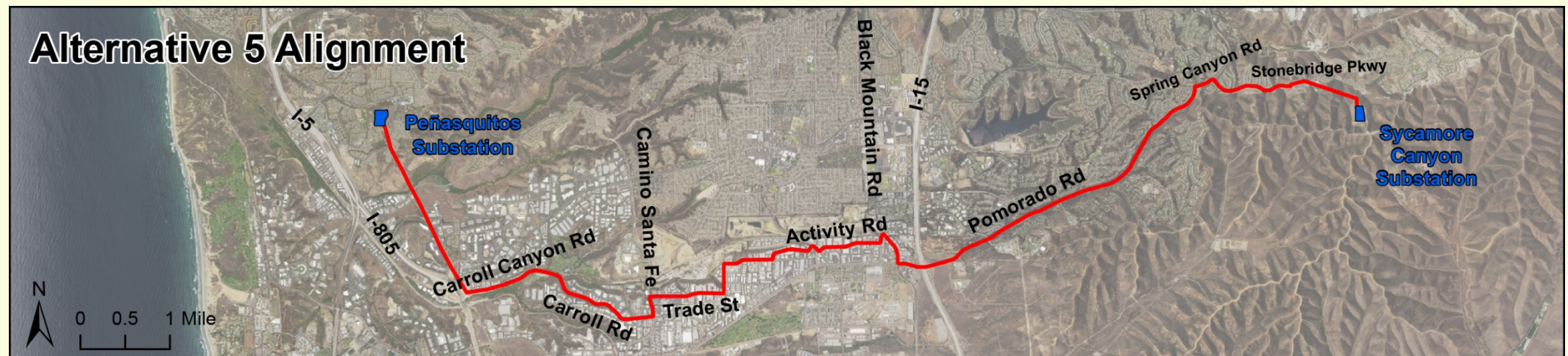


- SMRCPG and MMCPG corresponded with CPUC during the public review period and an extension was requested
  - CPUC granted a 2 week extension to the public review period
  - CPUC and SDG&E attended a separate meeting with members of the SMRCPG and MMCPG during the Draft EIR public review period
- CPUC received a joint comment letter from SMRCPG and MMCPG
  - Comments addressed impacts of Alternative 5
- CPUC responses to these comments were published in the Final EIR
  - Note that all individuals who commented were added to the project mailing list

# What is Alternative 5?



- **New 230-kV transmission line** between Sycamore Canyon Substation and Peñasquitos Substation
  - *Overhead* within existing SDG&E right-of-way for 2.8 miles
  - *Underground* in duct bank and vaults within roads for 11.5 miles
  - I-15 crossing would be either overhead or underground depending on Caltrans consultation

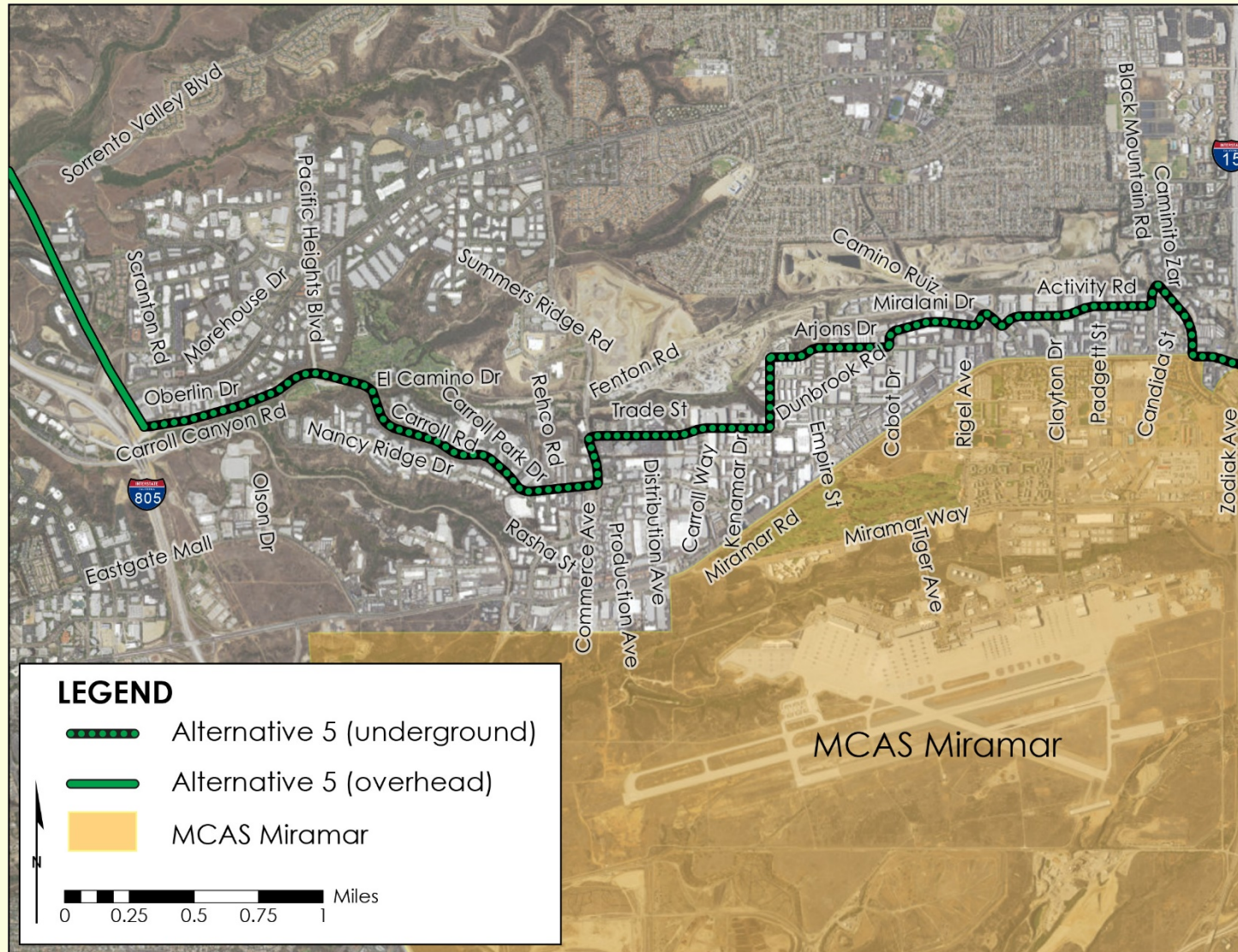


# Alternative 5 Impacted Roads



- Stonebridge Parkway: a four-lane boulevard with a center median
- Pomerado Road: two travel lanes, a bike lane, and a shoulder
- Miramar Road: a major thoroughfare with six travel lanes plus a turn lane
- Industrial roads north of Miramar Road:
  - Kearny Villa Road
  - Black Mountain Road
  - Activity Road
  - Camino Ruiz
  - Miralani Drive
  - Arjons Drive
  - Trade Place and Trade Street
  - Camino Santa Fe
  - Carroll Road/Carroll Canyon Road

# Alternative 5 Location



- Additional maps and diagrams in FEIR Chapter 3.
- Detailed maps of the Alternative 5 components located in FEIR Appendix E.

# Alternative 5 Underground Construction



- Underground Duct Bank
  - 3.5 foot wide trench for installation of the duct bank
  - Approximately 3.5 to 8 feet deep
- Splice vaults
  - Located approximately 1,800 feet apart along the alignment
  - 24 feet long by 10 feet wide and 10 feet deep
- Approximately 15 to 21 months for construction in roadways along 11.5 mile underground
  - Includes 12 to 15 months of road work and remaining time for cabling
- SDG&E is committed to working with the community prior to and during construction in order to give timely forecasts and updates of construction progress

# Underground Construction Steps



- Field marking and potholing to confirm locations of existing utilities
- Traffic control measures
- Trench excavation
- Installation of duct bank
- Installation of vaults
- Placement of concrete
- Placement of compacted road base and finished road surface
- Cable installation in duct bank



# Key Mitigation Measures for Alt 5



## ■ Traffic mitigation measures

- Traffic-1: Construction Transportation Management Plan
- Traffic-6: Restrict Road Closures to Non-Peak Periods and Maintain Access
- Traffic-7: Closure Notification and Detours
- Traffic-8: Notify Emergency Personnel
- Traffic-12: Consult with Bus and Transit Service

## ■ Noise mitigation measures

- Noise-1: Resident Notification and Response to Complaints
- Noise-2: Noise Suppression Techniques

# Mitigation Measure Traffic-1



- **Construction Transportation Management Plan**
  - Implementation of standard safety practices, including installation of appropriate barriers between work zones and transportation facilities, placement of appropriate signage, and use of traffic control devices.
  - Use of flaggers and/or signage to guide vehicles through or around construction zones using proper techniques for construction activities
  - Traffic detours, with appropriate signage and notification, will be made available when appropriate and necessary
  - Timing of worker commutes and material deliveries to avoid peak commuting hours.
  - Detours for cyclists and pedestrians when bike lanes or sidewalks must be closed.



# Mitigation Measure Traffic-6



## ■ Restrict Road Closures and Maintain Access

- SDG&E shall restrict all necessary lane closures or obstructions on major roadways associated with overhead or underground construction activities to **off-peak periods** to reduce traffic delays.
- Lane closures will typically not occur in high-traffic areas between **6:00 and 9:30 AM** and between **3:30 and 6:30 PM**, unless otherwise specified by the responsible public agency issuing an permits.
- SDG&E shall **maintain travel through intersections** at all times during construction.
- SDG&E or its construction contractors shall provide the ability to quickly lay a temporary steel plate trench bridge upon request in order to **ensure driveway access to schools, businesses, and residences** and shall provide continuous access to properties when not actively constructing the underground cable alignment.

# Mitigation Monitoring and Compliance Reporting Program (MMCRP)



- CPUC is developing an MMCRP.
  - Defines compliance roles and responsibilities
  - Methods for mitigation measure implementation
- CPUC monitors will verify that mitigation measures are being implemented.
- CPUC and SDG&E will prepare reports on mitigation compliance.
  - Mitigation compliance reports will be published on the CPUC website
  - Any non-compliance incidents will be documented in daily, weekly, and monthly reports

**CPUC has the authority to stop work if SDG&E violates the mitigation measures in the EIR.**

# Anticipated Project Schedule



- **September 29, 2016**
  - CPUC to vote on CPCN
  - Proposed Decision authorizes construction of Alternative 5
- **October 2016 through December 2016**
  - SDG&E completes engineering for Alternative 5, prepares pre-construction mitigation plans (e.g., Construction Traffic Management Plan), and obtains any other necessary local permits

# Anticipated Project Schedule



- **October 2016 through June 2018**
  - Mobilization and Site Preparation – 1-3 months
  - Overhead Construction – 5-7 months
  - Underground Construction – 15-21 months
    - Underground construction will occur in phases along the Alternative 5 alignment
  - These durations are not necessarily sequential, as the phases may overlap based on permits and NTP's
- **SDG&E is committed to working with the community prior to and during construction in order to give timely forecasts and updates of construction progress**

# Ongoing Outreach and Notification



## ■ Notification required by Mitigation Measures

- Notify all residents within 300 feet of proposed temporary lane or road closures and all emergency personnel at least 7 days before and prior to a temporary lane or road closure (Traffic-6, Traffic- 8)
- Bike path signs placed along the closed bike path a minimum of 7 days prior to closure notifying bicyclists of construction activities and duration of bike path closure (Traffic-7)

## ■ Other SDG&E Community Outreach

- SDG&E is committed to working with the community prior to and during construction in order to give timely forecasts and updates of construction progress



Sycamore - Peñasquitos 230-kV Transmission Line



# Questions

