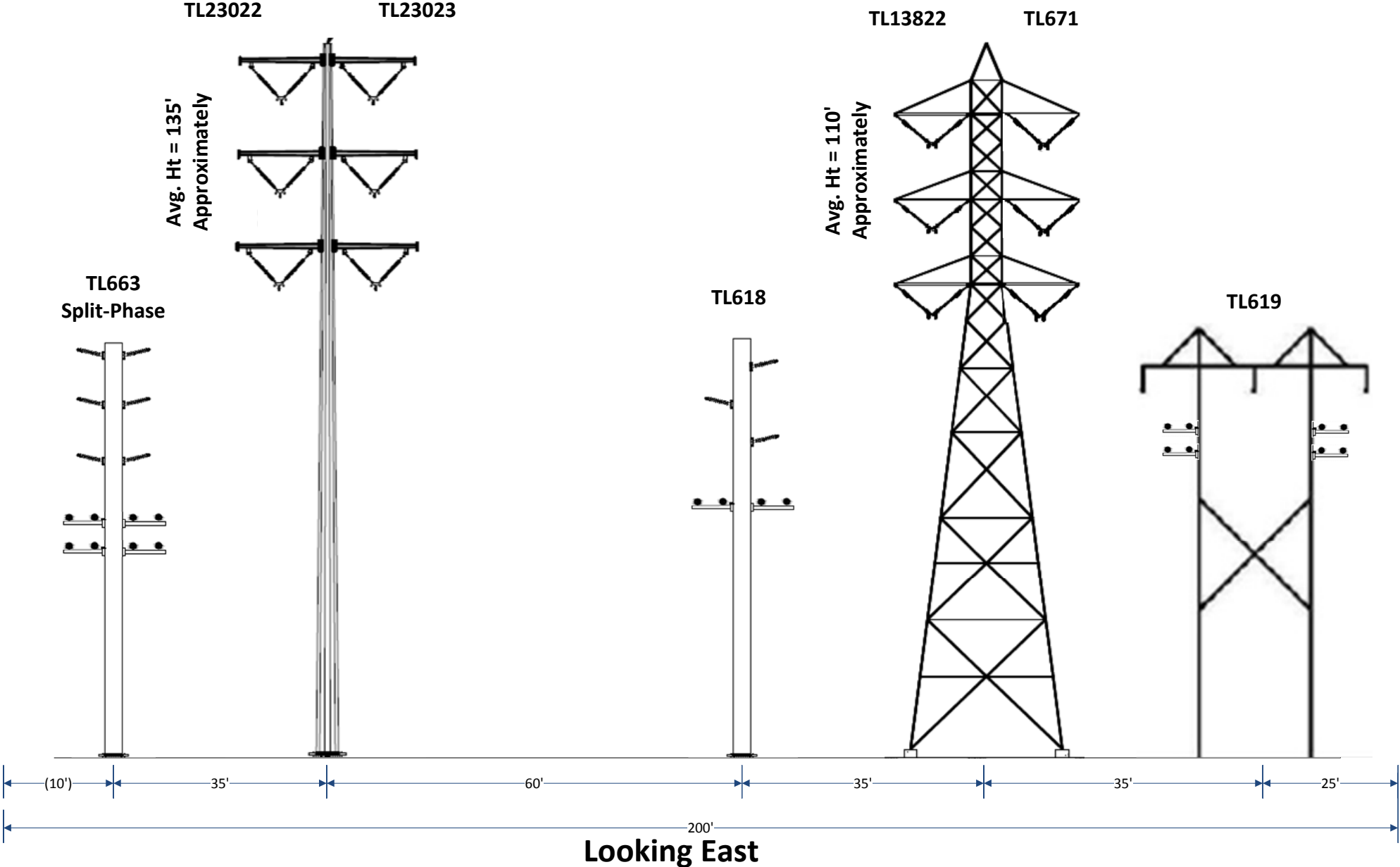


MS-SX Section 1

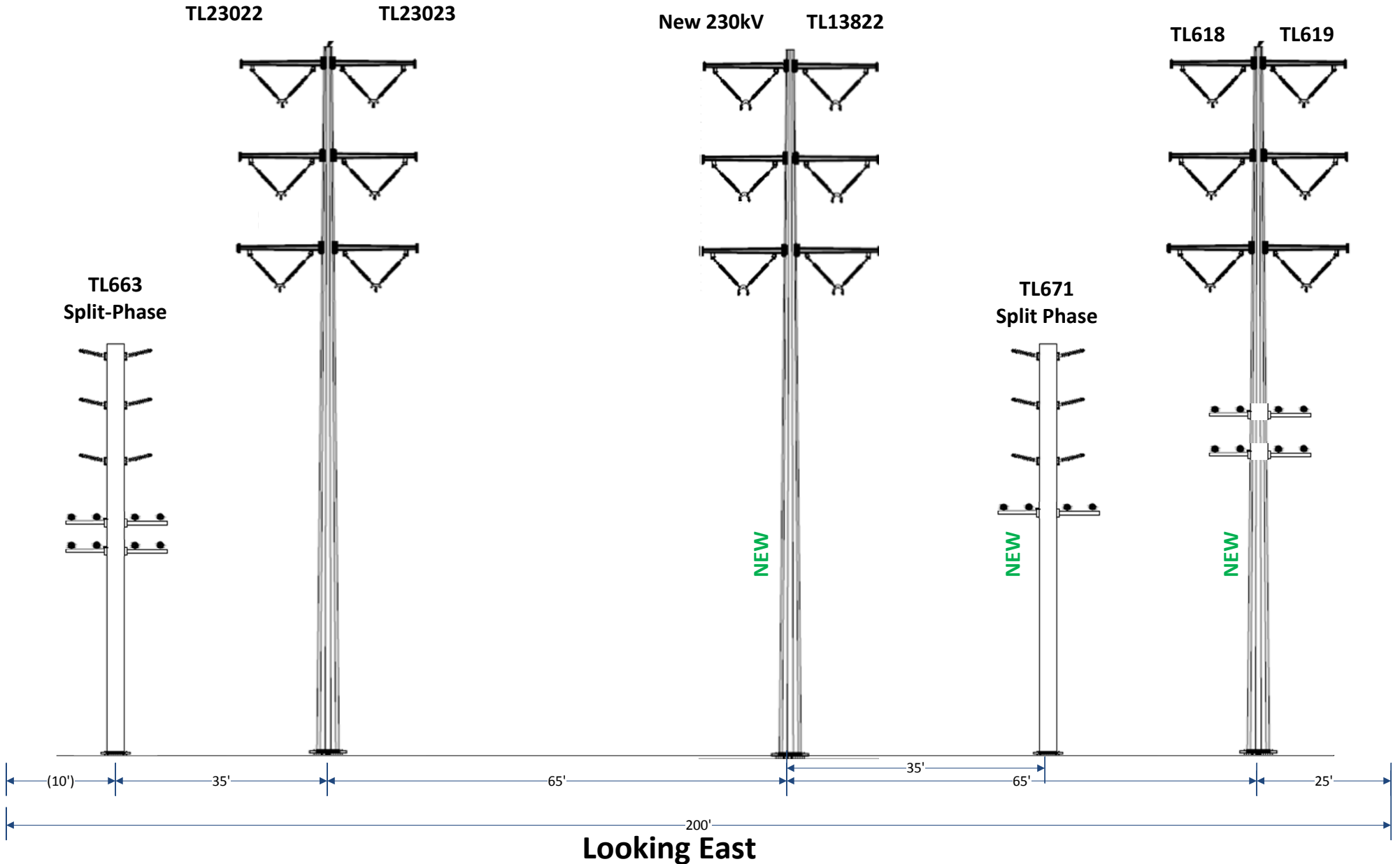
Existing

MS to I-15



MS-SX Section 1 - Proposed

MS to I-15



MS-SX Section 2

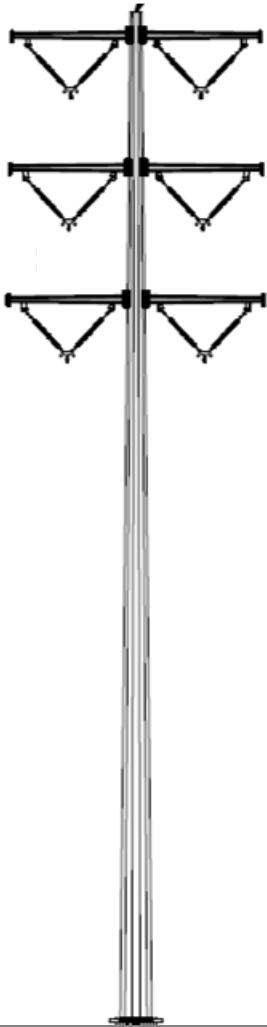
Existing

I-15 to Elliot

TL23022

TL23023

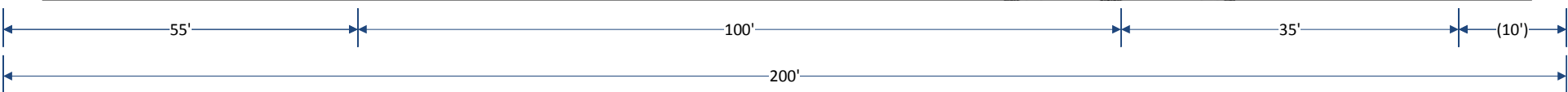
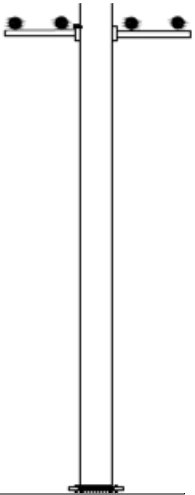
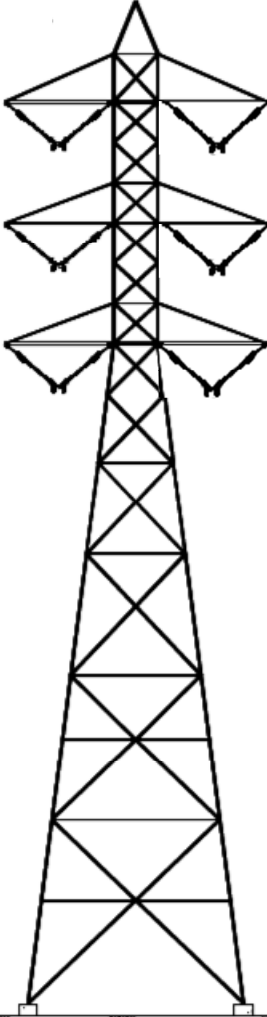
Avg. Ht = 135'
Approximately



TL13822

TL671

Avg. Ht = 110'
Approximately



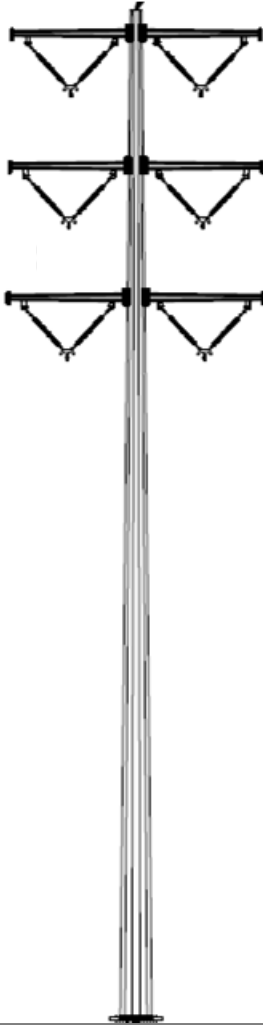
Looking East

MS-SX Section 2 Proposed

I-15 to Elliot

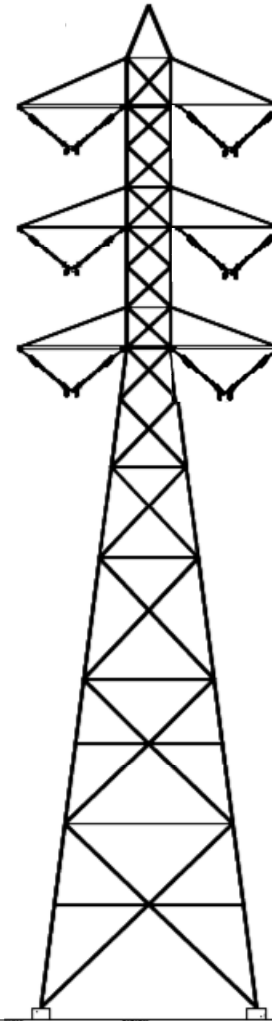
TL23022

TL23023

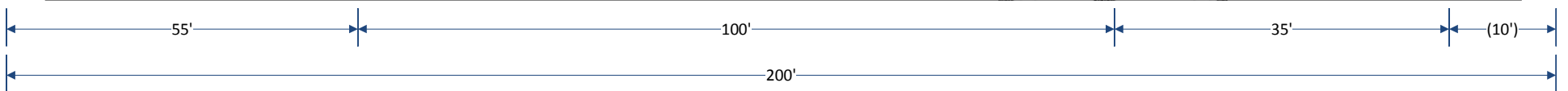
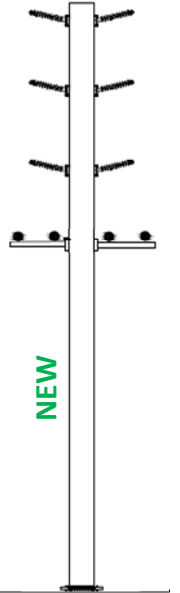


New 230kV

TL13822



TL671
Split Phase



Looking East

MS-SX Section 3

Existing

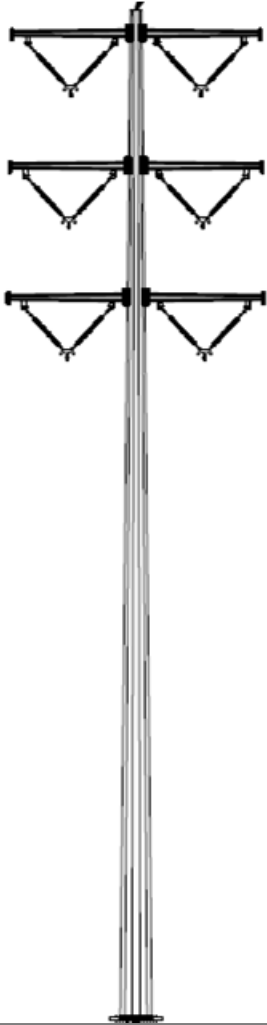
Elliot to Fanita Jctn

TL13822 Split Phase S/O Carlton Tap
TL13828 Split Phase N/O Carlton Tap)

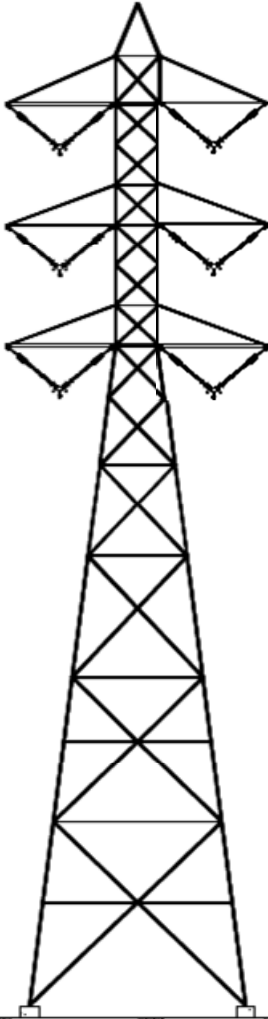
TL23022

TL23023

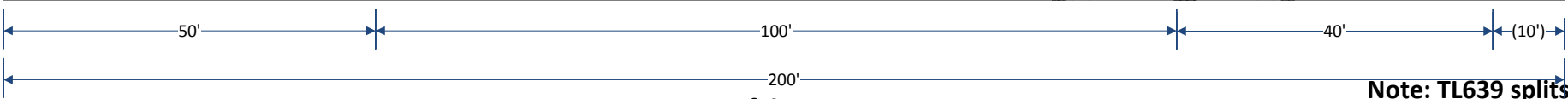
Avg. Ht = 135'
Approximately



Avg. Ht = 110'
Approximately



TL639 TL636



Looking East

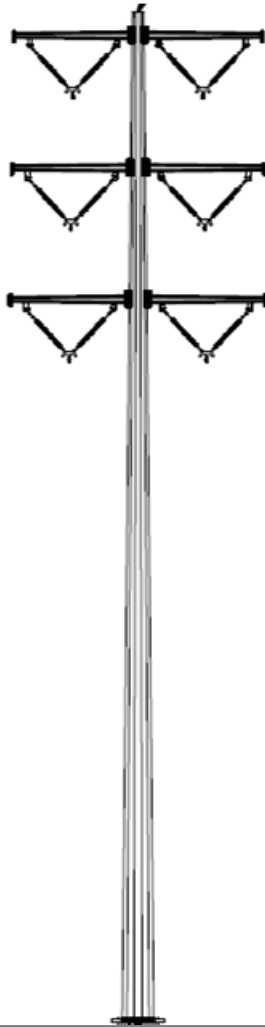
Note: TL639 splits off to SX just west of the Carlton Tap

MS-SX Section 3 Proposed

Elliot to Fanita Jctn

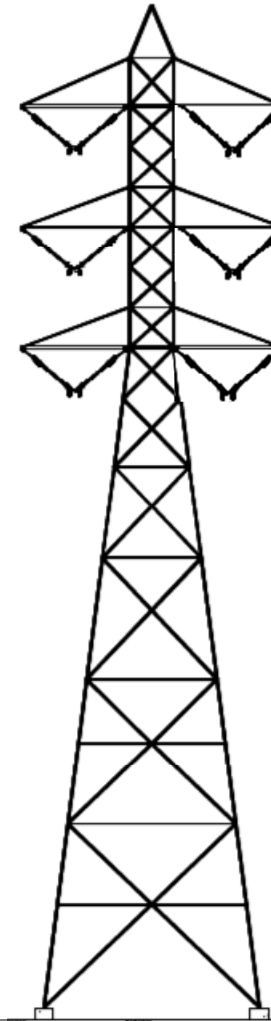
TL23022

TL23023

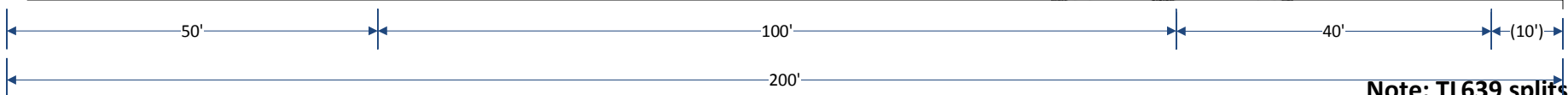
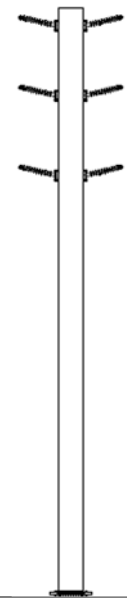


New 230kV

TL13822 Bundled S/O Carlton Tap
TL13828 Bundled N/O Carlton Tap



TL639 TL636



Looking East

Note: TL639 splits off to SX just west of the Carlton Tap

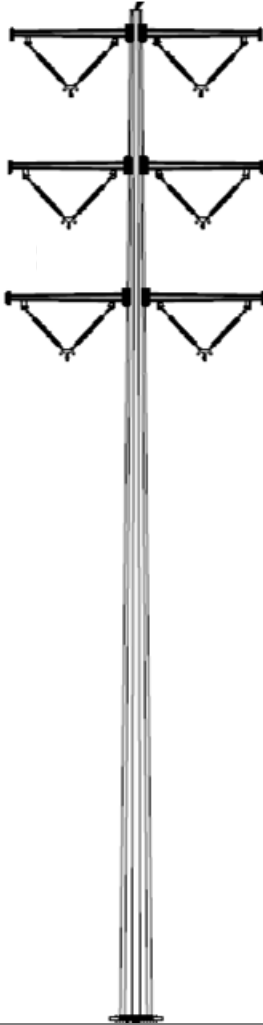
MS-SX Section 4

Existing

Fanita Jctn to Sycamore

TL13828

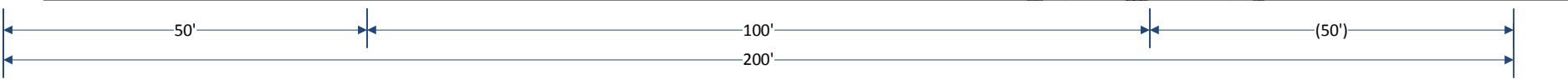
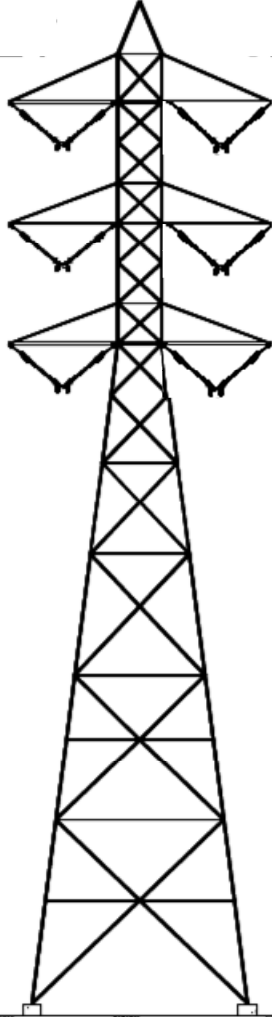
TL13821



TL23041

TL23021

Avg. Ht = 125'
Approximately



Looking North

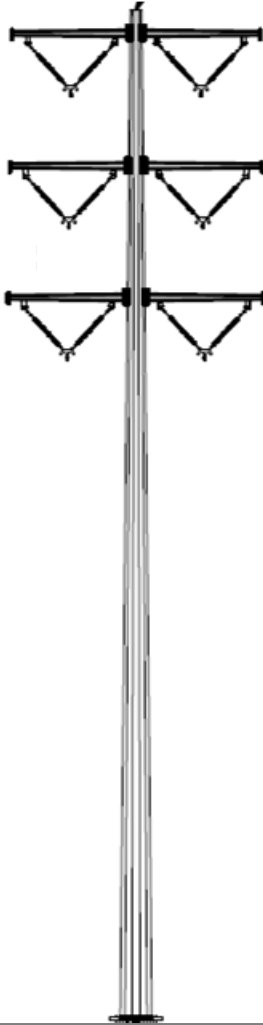
MS-SX Section 4 Proposed

Fanita Jctn to Sycamore

Note: Additional ROW may be required south of new 230kV poles.

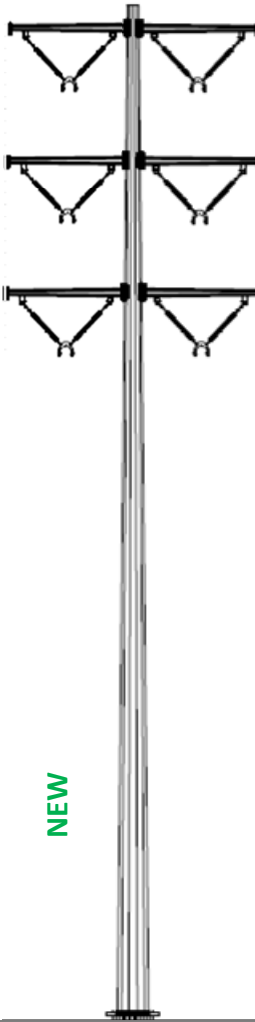
TL13828

TL13821



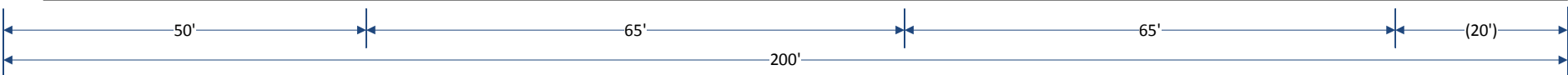
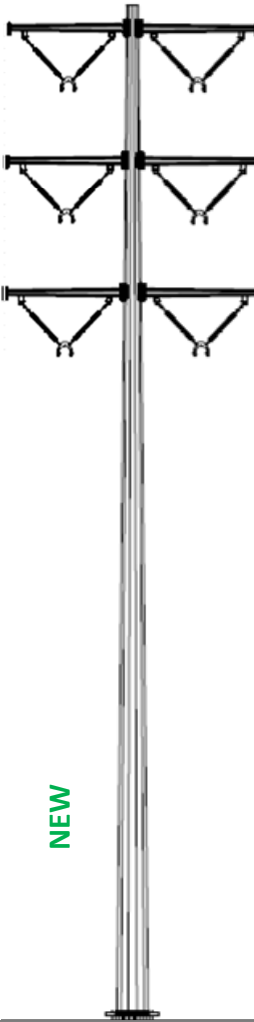
TL23041

TL23021



New 230kV

Spare



Looking North