

MS-SX Section 1 Existing

MS to I-15

230kV
TL23022

230kV
TL23023

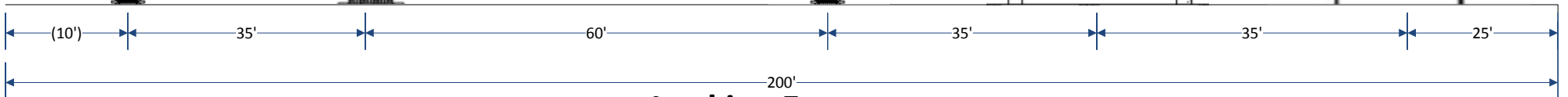
138kV
TL13822

69kV
TL671

69kV
TL663
Split-Phase

69kV
TL618

69kV
TL619



Looking East
NOT TO SCALE

MS-SX Section 1 - Proposed

MS to I-15

CONCEPTUAL

TL23022

TL23023

New 230kV

TL13822

TL618

TL619

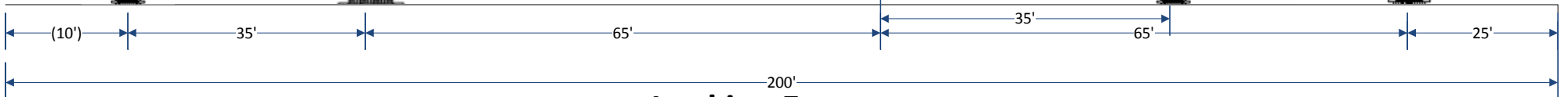
TL663
Split-Phase

TL671
Split Phase

NEW

NEW

NEW



Looking East
NOT TO SCALE

MS-SX Section 2 Existing

I-15 to Elliot

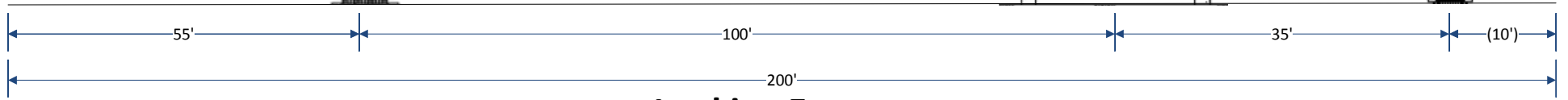
230kV
TL23022

230kV
TL23023

138kV
TL13822

69kV
TL671

12kV



Looking East
NOT TO SCALE

Updated MS-SX Section 2

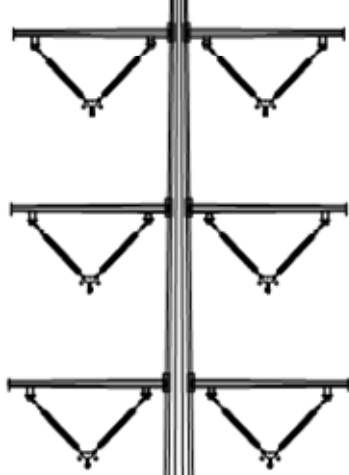
CONCEPTUAL

Proposed

I-15 to Elliot

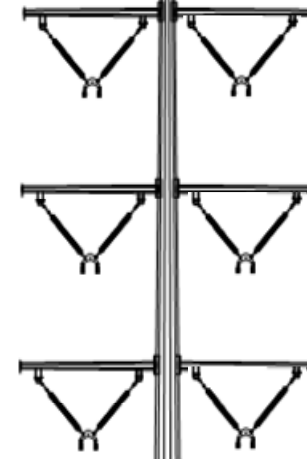
TL23022

TL23023



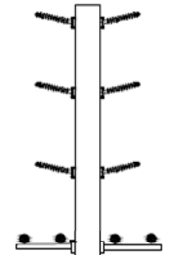
New 230kV

TL13822

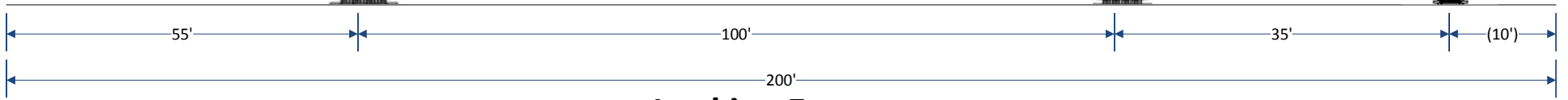


NEW

TL671
Split Phase



NEW



Looking East
NOT TO SCALE

MS-SX Section 3 Existing

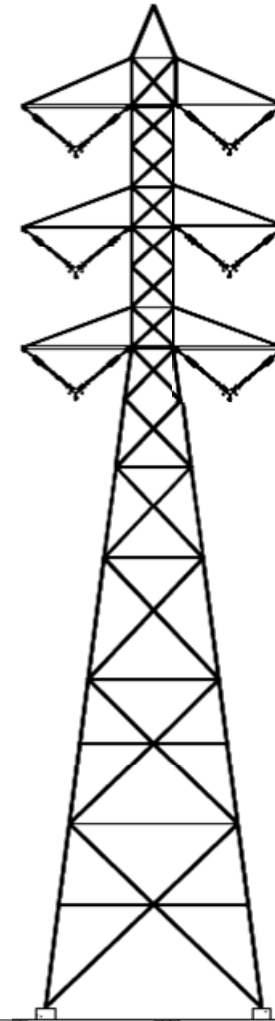
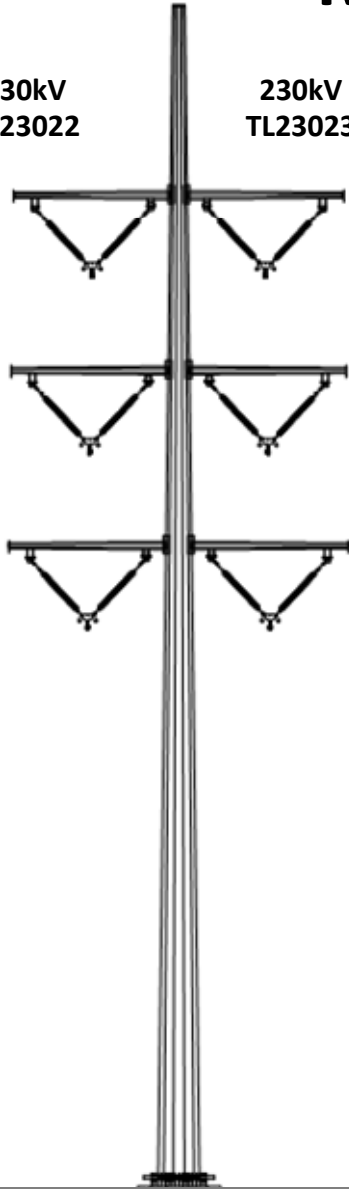
Elliot to Fanita Jctn

138kV

230kV
TL23022

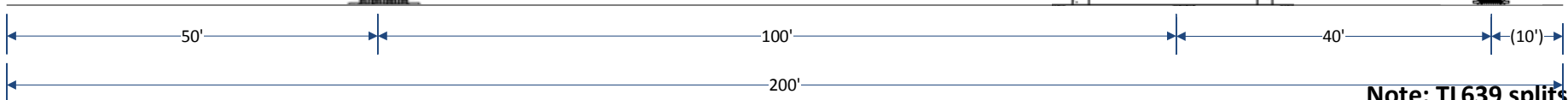
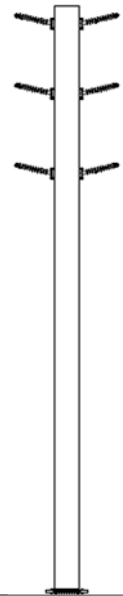
230kV
TL23023

TL13822 Split Phase S/O Carlton Tap
TL13828 Split Phase N/O Carlton Tap)



69kV
TL639

69kV
TL636



Looking East
NOT TO SCALE

Note: TL639 splits off to
SX just west of the
Carlton Tap

Updated MS-SX Section 3

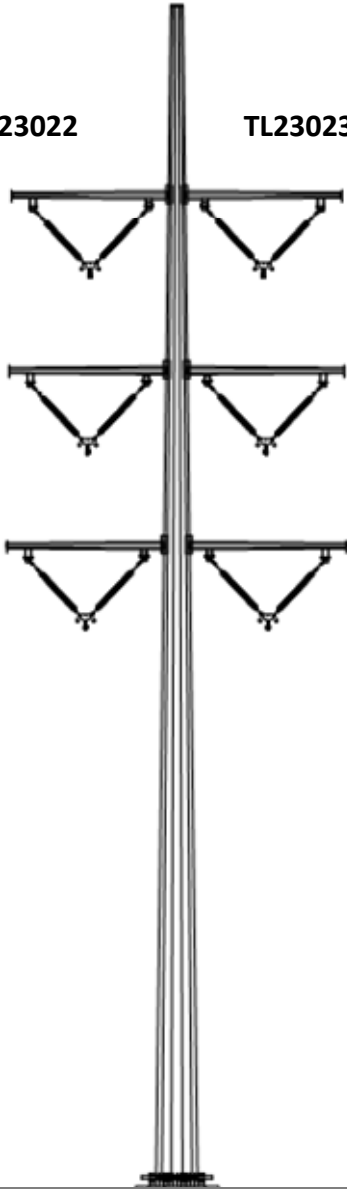
CONCEPTUAL

Proposed

Elliot to Fanita Jctn

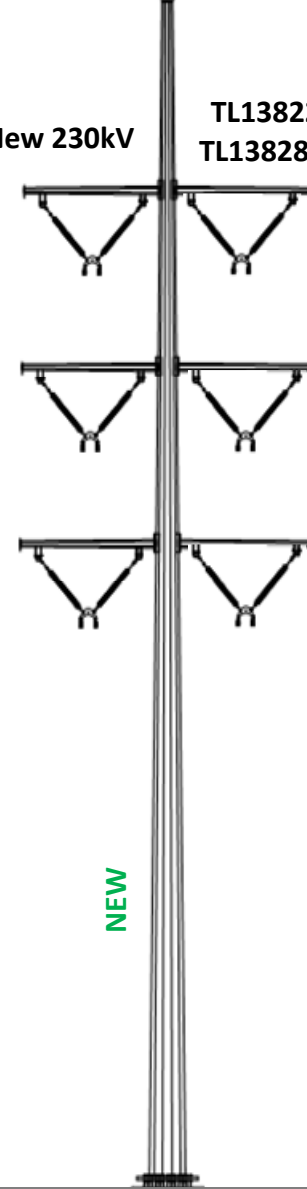
TL23022

TL23023

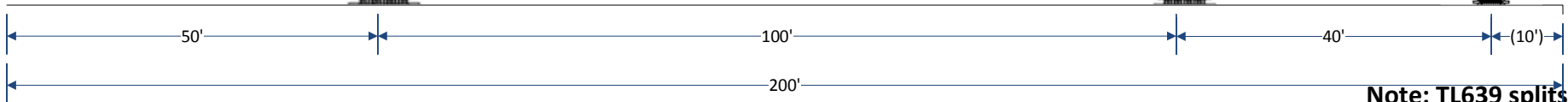
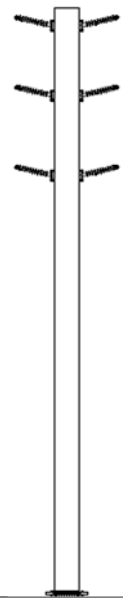


New 230kV

TL13822 Bundled S/O Carlton Tap
TL13828 Bundled N/O Carlton Tap



TL639 TL636



Looking East
NOT TO SCALE

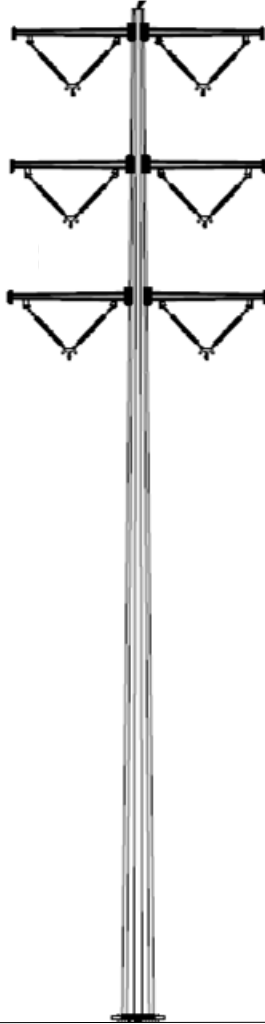
Note: TL639 splits off to
SX just west of the
Carlton Tap

MS-SX Section 4 Existing

Fanita Jctn to Sycamore

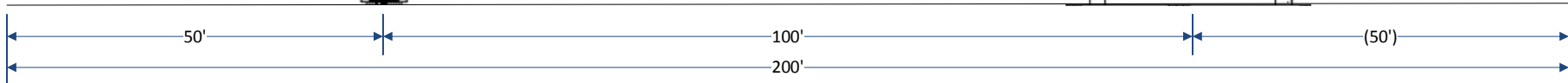
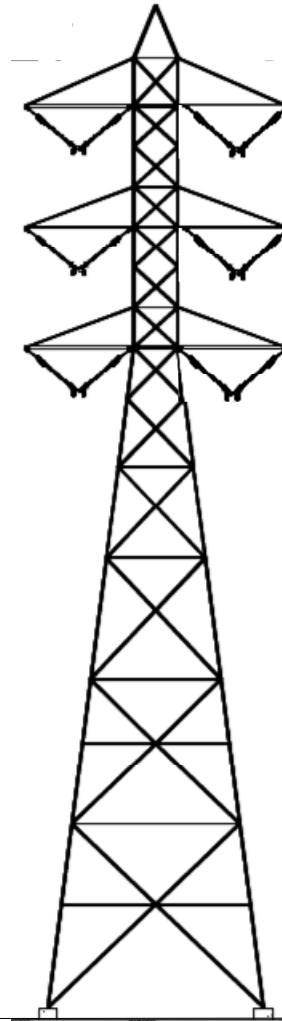
138kV
TL13828

138kV
TL13821



230kV
TL23041

230kV
TL23021



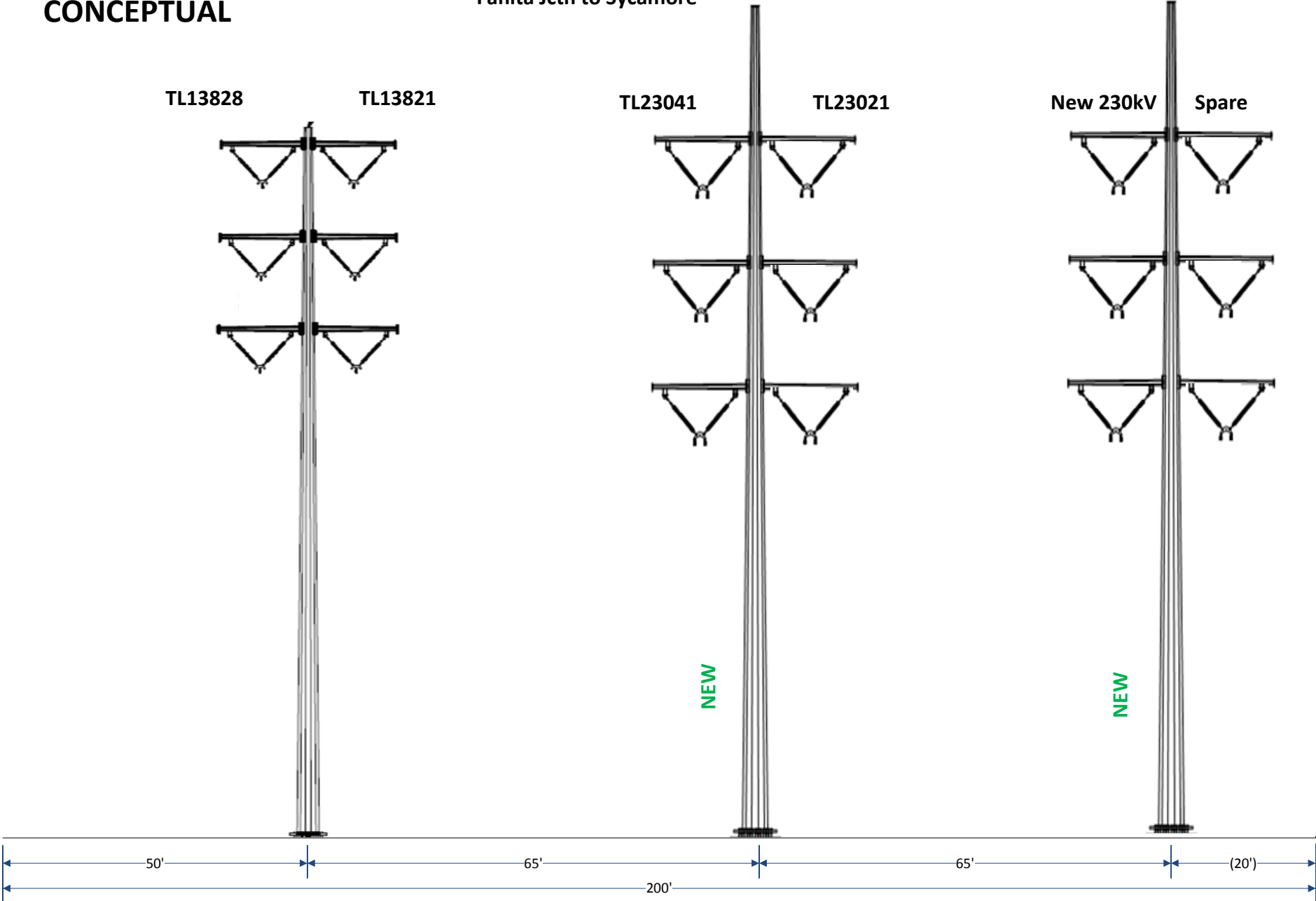
Looking North
NOT TO SCALE

MS-SX Section 4 Proposed

Note: Additional ROW may be required East of new 230kV poles.

CONCEPTUAL

Fanita Jctn to Sycamore



Looking North
NOT TO SCALE