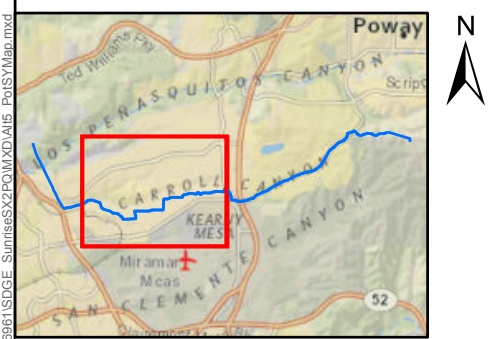
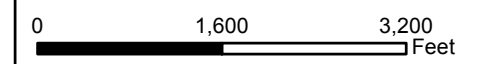


**Sycamore to Peñasquitos
230kV Transmission Line
Project**
Alternative 5
Staging Yards Overview



- Entrance Point
- Alternative 5 Route
- Access Route
- Potential Staging Yard

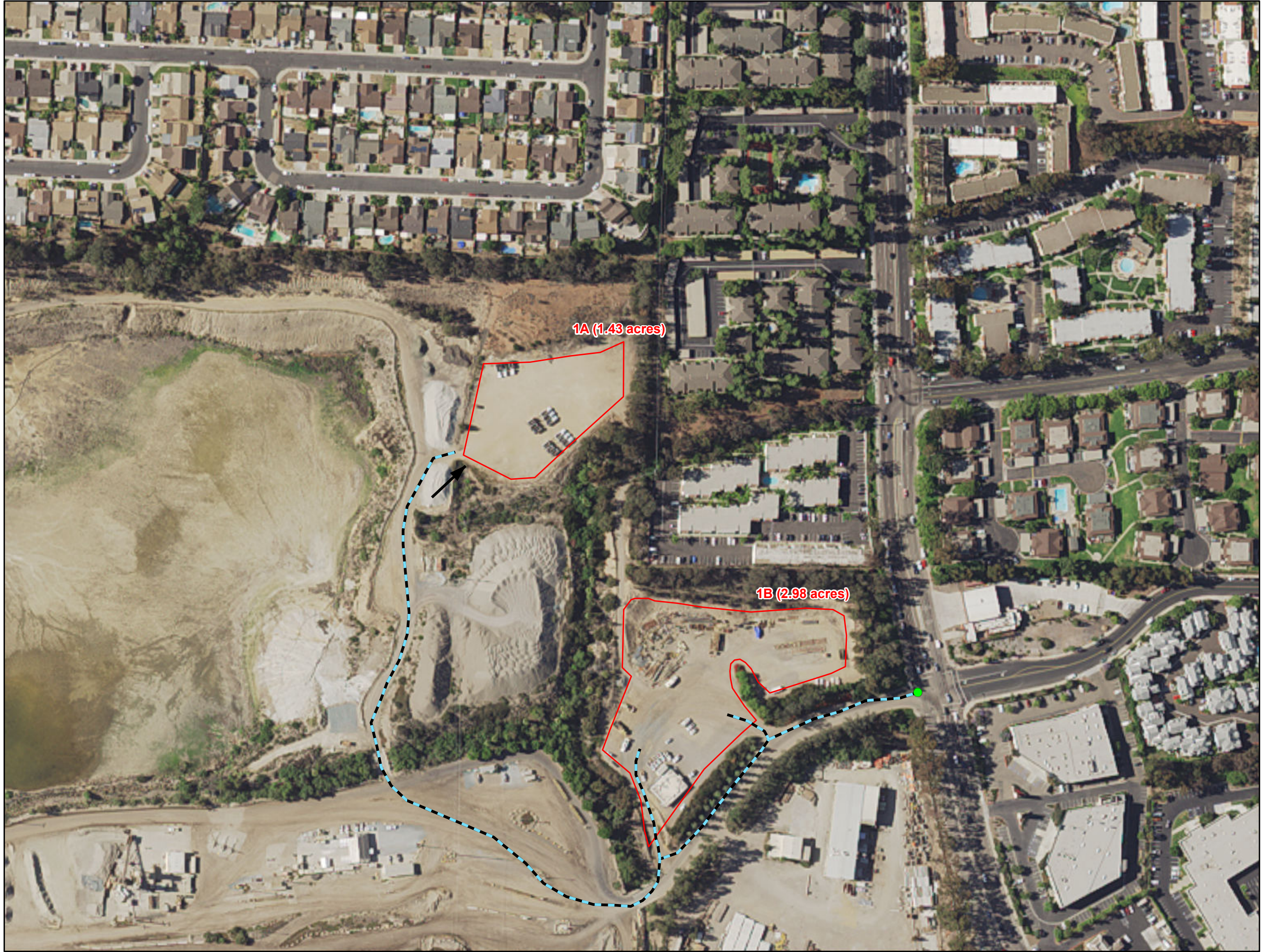
SDG&E is providing this map with the understanding that the map is not survey grade. Certain technology used under license from AT&T Intellectual Property I, L.P. Copyright ©1998 – 2007 AT&T Intellectual Property 1, L.P. All Rights Reserved.



Content may not reflect National Geographic's current map policy.
Sources: National Geographic, Esri, DeLorme, HERE, UNEP-WCMC, USGS, NASA, ESA, METI, NRCAN, GEBCO, NOAA, increment P Corp., TRC, 2015; SDG&E, 2015; NAIP, 2014



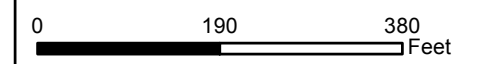
© SDG&E, SX2PQantL16961SDGE_SumitesSX2PQantL16961SDGE_PotStYMap.mxd



**Sycamore to Peñasquitos
230kV Transmission Line
Project**
Alternative 5
Staging Yards

- Entrance Point
- Alternative 5 Route
- Access Route
- Potential Staging Yard
- ➔ Photo Location & Direction

SDG&E is providing this map with the understanding that the map is not survey grade. Certain technology used under license from AT&T Intellectual Property I, L.P. Copyright ©1998 – 2007 AT&T Intellectual Property 1, L.P. All Rights Reserved.



Content may not reflect National Geographic's current map policy.
Sources: National Geographic, Esri, DeLorme, HERE, UNEP-WCMC, USGS, NASA, ESA, METI, NRCAN, GEBCO, NOAA, increment P Corp., TRC, 2015; SDG&E, 2015; NAIP, 2014



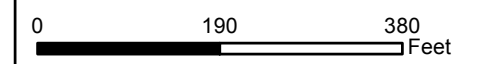
G:\SDG&E\S22P\04\116961\SDG&E_Summit\S22P\04\116961_PotStgMap.mxd



**Sycamore to Peñasquitos
230kV Transmission Line
Project**
Alternative 5
Staging Yards

- Entrance Point
- Alternative 5 Route
- - - Access Route
- Potential Staging Yard
- ➔ Photo Location & Direction

SDG&E is providing this map with the understanding that the map is not survey grade. Certain technology used under license from AT&T Intellectual Property I, L.P. Copyright ©1998 – 2007 AT&T Intellectual Property 1, L.P. All Rights Reserved.



G:\SDGE\SX2P\0ant\16961\SDGE_Sumites\SX2P\0M\0A15_PotStgMap.mxd

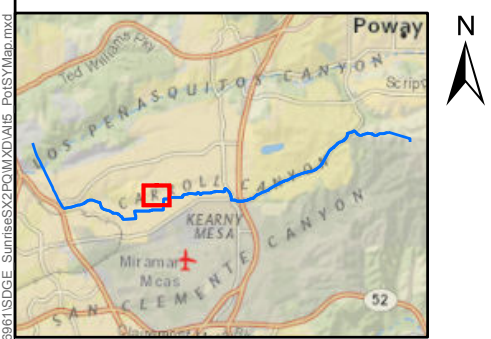
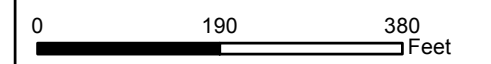


**Sycamore to Peñasquitos
230kV Transmission Line
Project
Alternative 5
Staging Yards**

- Entrance Point
- Alternative 5 Route
- Access Route
- Potential Staging Yard
- ➔ Photo Location & Direction

3 (2.62 acres)

SDG&E is providing this map with the understanding that the map is not survey grade. Certain technology used under license from AT&T Intellectual Property I, L.P. Copyright ©1998 – 2007 AT&T Intellectual Property 1, L.P. All Rights Reserved.



Content may not reflect National Geographic's current map policy.
Sources: National Geographic, Esri, DeLorme, HERE, UNEP-WCMC, USGS, NASA, ESA, METI, NRCAN, GEBCO, NOAA, increment P Corp.; TRC, 2015; SDG&E, 2015; NAIP, 2014



G:\SDG&E\S22P\0ant\16961\SDG&E_Summit\SX2POMXD\A15_PotStgMap.mxd

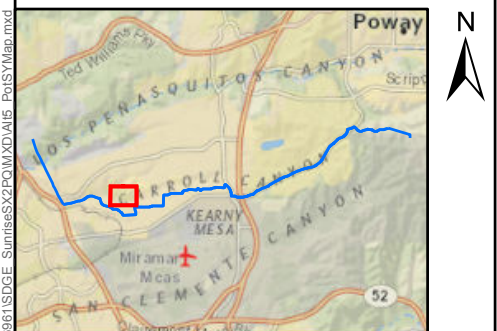
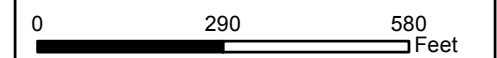
Note: The Parcel Site 4C is located on is currently undeveloped and the structure that appears in the aerial image has been subsequently removed. Refer to current Site Photographs of Site 4C for documentation of current site conditions.



**Sycamore to Peñasquitos
230kV Transmission Line
Project
Alternative 5
Staging Yards**

- Entrance Point
- Alternative 5 Route
- Access Route
- Potential Staging Yard
- ➔ Photo Location & Direction

SDG&E is providing this map with the understanding that the map is not survey grade. Certain technology used under license from AT&T Intellectual Property I, L.P. Copyright ©1998 – 2007 AT&T Intellectual Property 1, L.P. All Rights Reserved.



Content may not reflect National Geographic's current map policy.
Sources: National Geographic, Esri, DeLorme, HERE, UNEP-WCMC, USGS, NASA, ESA, METI, NRCAN, GEBCO, NOAA, increment P Corp.; TRC, 2015; SDG&E, 2015; NAIP, 2014





**Sycamore to Peñasquitos
230kV Transmission Line
Project**
Alternative 5
Staging Yards

- Entrance Point
- Alternative 5 Route
- Access Route
- Potential Staging Yard
- ➔ Photo Location & Direction

SDG&E is providing this map with the understanding that the map is not survey grade. Certain technology used under license from AT&T Intellectual Property I, L.P. Copyright ©1998 – 2007 AT&T Intellectual Property 1, L.P. All Rights Reserved.

