

G:\SDGE_SX2PQandTL6961\SDGE_SunriseSX2PQ\MXD\ISXtoPQ_Noise.mxd

Sycamore to Peñasquitos 230 kV Transmission Line Project
Noise Monitoring Location Map
Figure 1

- Noise Monitoring Locations 2014
- Noise Monitoring Locations 2013
- Proposed Route

SDG&E is providing this map with the understanding that the map is not survey grade. Certain technology used under license from AT&T Intellectual Property I, L.P. Copyright ©1998 – 2007 AT&T Intellectual Property 1, L.P. All Rights Reserved.

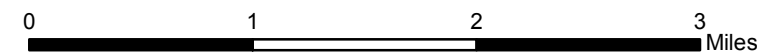
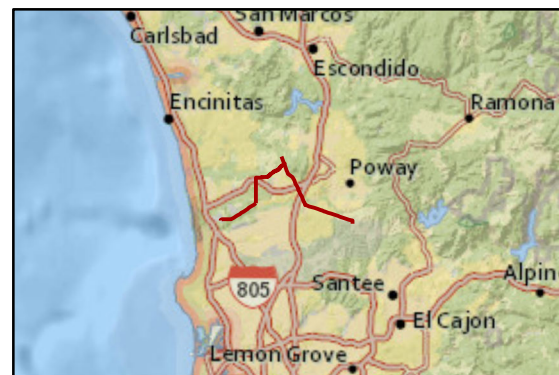


Figure 2: Location 2 Continuously Measured L_{eq}

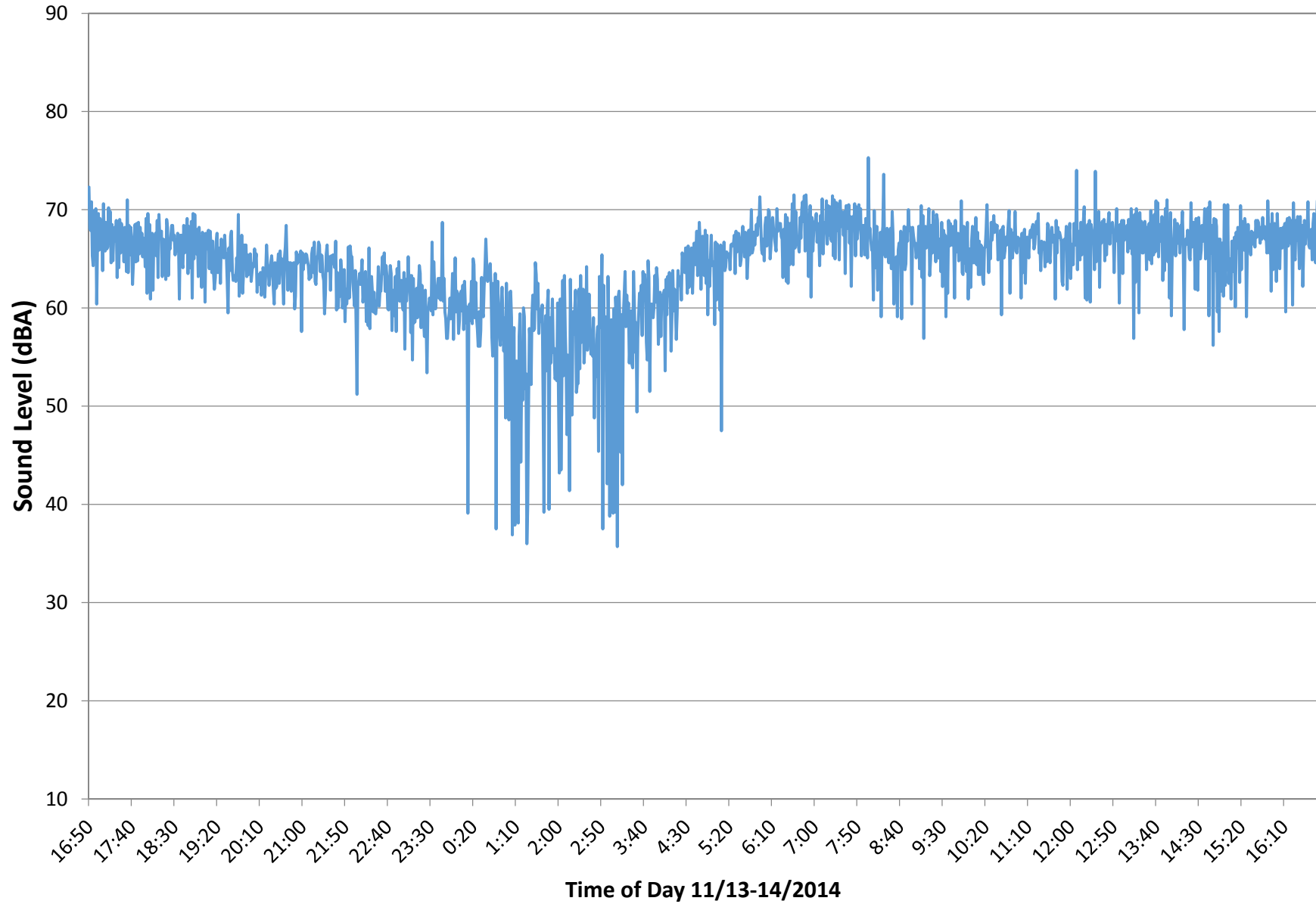


Figure 3: Location 8 Continuously Measured L_{eq}

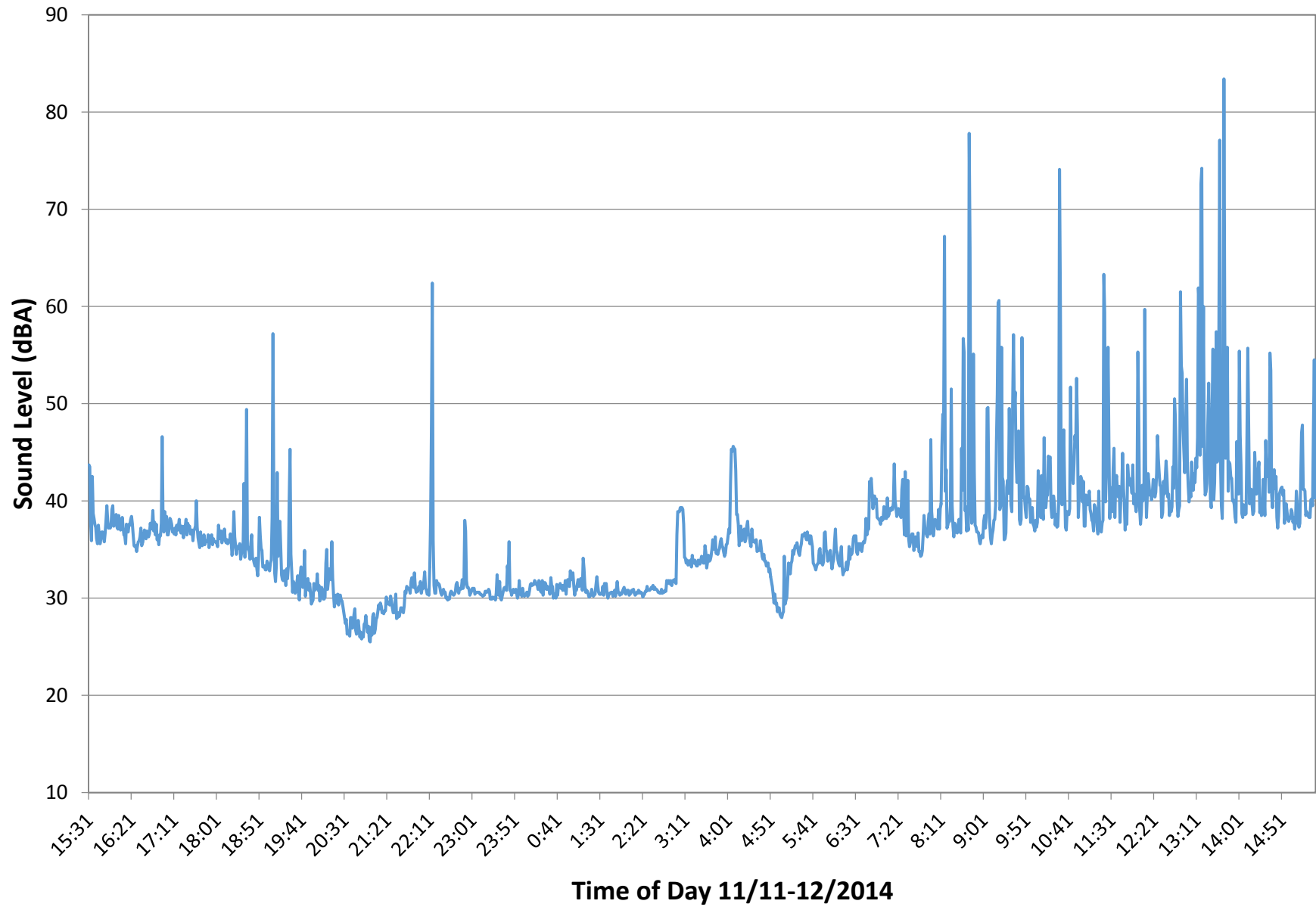


Figure 4: Location 3 Continuously Measured L_{eq}

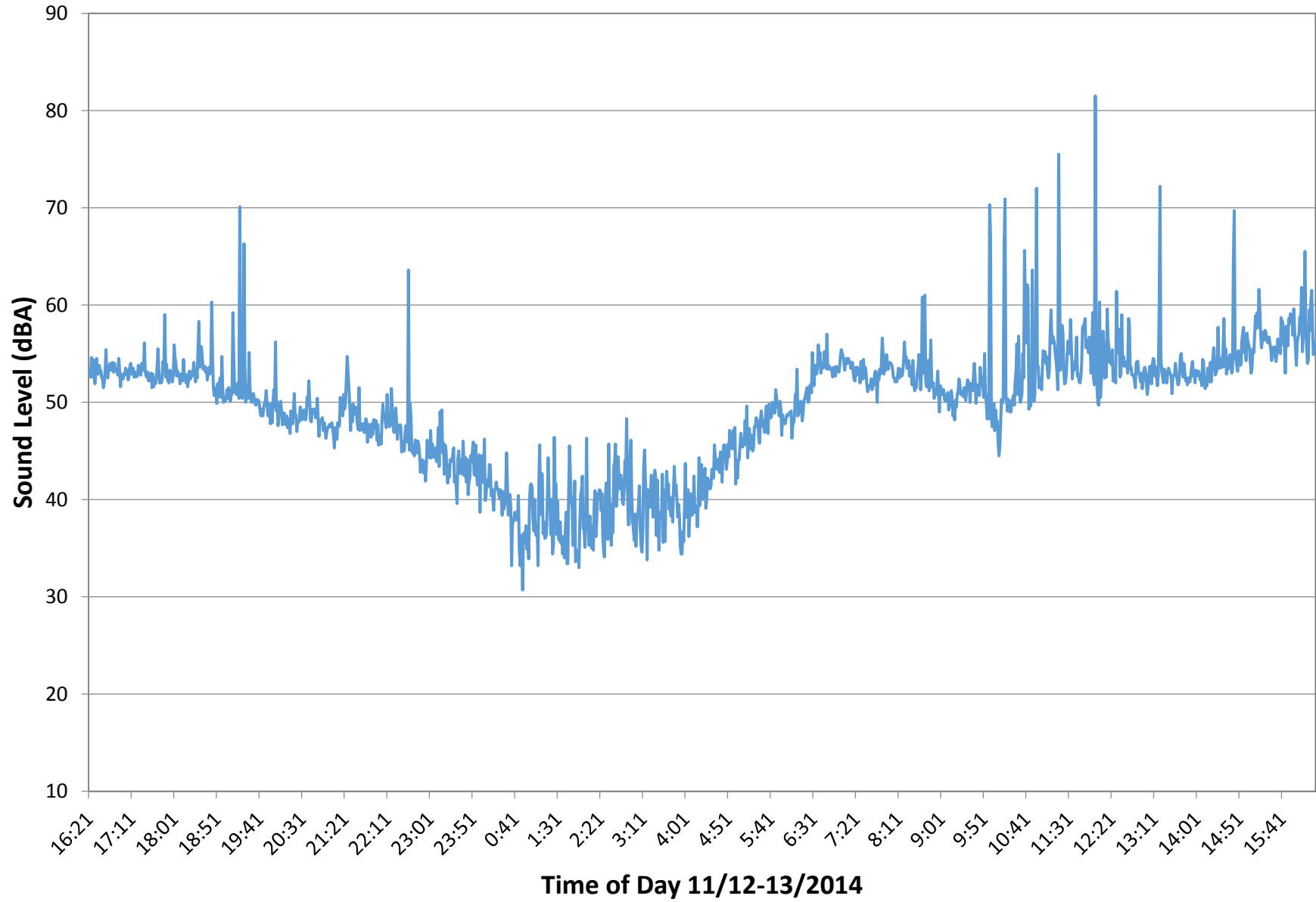


Figure 5: Location 1 24-Hour Corona Noise L_{eq} Measurements of 230 kV tower

