

PROJECT MEMORANDUM SYCAMORE-PEÑASQUITOS 230-KV TRANSMISSION LINE PROJECT

Date: May 5, 2017
To: Billie Blanchard, CPUC Project Manager
From: Sheila Hoyer, CPUC Monitoring Supervisor
Subject: Weekly Report #17 – April 23 to April 28, 2017

INTRODUCTION

This report provides a summary of the construction and compliance activities associated with the SDG&E Sycamore-Peñasquitos 230-kV Transmission Line Project for the week of April 23 to April 28, 2017.

A summary of the Notices to Proceed, and Minor Project Refinement, and Temporary Extra Workspace Requests are provided in Tables 1, 2, and 3, respectively. A summary of Non-compliance, Project Memoranda and Incidents is provided in Table 4. Daily Inspection Reports are provided in Appendix A.

CPUC/Panorama Environmental Monitors (EMs): Dave Flietner, Jerry Scott, and Korey Klutz

STAGING YARDS

Summary of Activity:

Stonebridge Staging Yard:

1. Delivering materials and equipment, maintaining BMPs, controlling invasive weeds, swabbing and capping circuit conduit, and placing “Beware of Rattlesnakes” signs.

Driving Range Staging Yard:

1. Maintaining BMPs, delivering materials and equipment, and installing a temporary generator for temporary power for the SDG&E construction trailer.

Underground Transmission Line:

1. Construction occurred in Segment 5 along sections 6, 7, 10, 12, 13 and 14 (approximately at stations 69+00 to 227+50).
2. Saw cutting for trench and vaults, installing vaults, potholing to locate existing utilities, maintaining BMPs, and installing storm drain inlet protection.

Environmental Compliance:

1. During this reporting period, all pavement was kept clean. No winds occurred that were higher than 20 mph. All off-road diesel-powered construction equipment used on the Project met a minimum of EPA Tier 3 standards.
2. Monitoring for special-status species and inspections for wildlife was implemented to avoid and minimize impacts to biological resources. Construction activities within the Stonebridge Staging Yard and Driving Range Staging Yard were initiated outside of the nesting season, and construction activities remain ongoing. Daily nest monitoring occurred on April 24-28, 2017 in areas of active construction where nest buffer reduction requests had been approved, and active construction was occurring. Daily nest monitoring included monitoring of three nests at the beginning of this reporting period and was decreased to one nest by the end of this reporting period. The number of nests monitored were reduced either due to chicks fledging or the nests becoming inactive (not associated or caused by construction activities). All project equipment arrived clean and free of mud and/or vegetation.
3. During this reporting period, cultural, paleontological, and Native American monitors were on site for ground-disturbing activities in areas with moderate to high potential to encounter resources. Archaeological, Native American, and paleontological monitoring of vault excavations was discontinued when the vault excavations reached a depth (greater than 10 feet) where the potential for cultural resources was low. Cultural, Native American and paleontological monitoring of potholing activities conducted with a vacuum truck was reduced during this reporting period as recommended by the CPUC-approved Qualified Paleontologist and CPUC-approved cultural resources specialist/archaeologist since the work was being performed in previously disturbed fill materials, and the potential to encounter paleontologically-sensitive deposits or archaeological resources during potholing was determined to be low. On April 27, 2017, construction crews hand-excavated a 4-foot-deep hole for a 6-by-6 post for temporary power at the Driving Range staging yard. The hand digging activities were monitored by Native American and archaeological monitors. The Qualified Paleontologist determined that the hole did not require paleontological monitoring due to the depth of excavation and low potential for paleontological resources. No cultural, Native American, or paleontological resources were identified during this reporting period.
4. A Level 1 Minor Problem Report related to trash was filed by the CPUC monitor on April 24, 2017. Trash was observed along the construction alignment near work areas. An Incident Report was sent to SDG&E on April 24, 2017. SDG&E mobilized a crew the afternoon of April 24, 2017 to pick up trash/litter observed along the Project ROW where active construction had been occurring. During the nightly tailboard held on April 24, 2017, litter and trash management procedures were reviewed with the construction crews. Crews were reminded that trash receptacles are located at lighting towers and are on each construction work vehicle. On the morning of April 25, 2017, SDG&E's Lead Environmental Inspector (LEI) conducted a final sweep of the Project ROW to verify that the work areas remained clean after the night construction shift. Moving forward, SDG&E's LEI/EI's will document pre- and post-work conditions after each construction

shift to verify that all food scraps, wrappers, bottles, and other trash generated by construction crews are deposited in trash receptacles and removed from the Project site. Proper disposal of trash will continue to be addressed at the construction tailboards. All vehicles and equipment were checked for leaks. All equipment staged along the ROW had drip pans in place to capture oil drips and leaks. One hazardous materials release occurred on April 24, 2017 between stations 206 + 00 and 207 + 00 during the relocation of a gas line. The release was from a front loader that had a hydraulic leak. The hydraulic leak released approximately 4 pints of hydraulic fluid onto the equipment and the soil (no hydraulic fluid was released onto the asphalt). The hydraulic fluid on the vehicle and on the impacted soil was cleaned with absorbent pads, and properly placed and stored in a labeled on-site hazardous waste drum on April 24, 2017. The release was reported to the California Office of Emergency Services and the San Diego County Department of Environmental Health (DEH) on April 24, 2017. Although the release did not exceed federal reportable quantity thresholds, release reporting was advised by San Diego County DEH staff. The Cal-OES Control Number is 17-3003. No other reportable releases and/or spills occurred during this reporting period.

5. Daytime construction activities during this reporting period were confined to Monday through Friday and occurred between 7:00 a.m. and 5:30 p.m. A noise permit was obtained from the City of San Diego for nighttime construction activities. Nighttime construction activities were confined to Sunday through Thursday and occurred between 9:00 p.m. and 5:00 a.m.
6. Project personnel parked their personal vehicles within a designated personal vehicle parking area within the project limits within the Stonebridge Staging Yard. Workers parked within the work limits of the Driving Range Staging Yard or parked on the adjacent public street.
7. No precipitation was recorded in the on-site rain gauges at Driving Range or Stonebridge Staging Yards. The Qualified Storm Water Pollution Prevention Plan Practitioner (QSP) conducted daily visual inspections at the Stonebridge and Driving Range Staging Yards, and along the underground transmission line section on April 24-28, 2017. The contractor installed and maintained BMPs along the right-of-way (ROW) in Segment 5. A street sweeper/cleaner was used to clean up excess sediment/dust generated from saw cutting activities. All equipment staged along the ROW had drip pans in place to capture oil drips and leaks.
8. All construction and compliance personnel on site during this reporting period completed the Project Safety and Environmental Awareness Program (SEAP). To date, approximately 574 Project personnel have received the required SEAP training, and 462 Project personnel have received the UXO training.
9. One Compliance Level Incident and no Project Memoranda were issued during the subject period.
10. No public complaints were received during this reporting period.

Agency Representatives during Construction (other than CPUC EMs): None

CPUC NOTICES TO PROCEED (NTPs)

Table 1 summarizes the CPUC NTP activity for the SDG&E Sycamore-Peñasquitos 230-kV Transmission Line Project to date.

Table 1 CPUC NTPs

NTP #	Date Submitted	Date Issued	Segment #	Description
1	12/05/16	12/29/16	N/A	Mobilize and begin operations at the construction staging yards.
2	01/23/17	02/07/17	Segment B	Construct the underground portion of the Project from Sycamore Substation to Structure P03, and from Structure P05 to Structure CC MM CP.
3	02/03/17	02/27/17	Segment A Segment C	<ol style="list-style-type: none"> Overhead construction from Sycamore Substation to Structure P06 Overhead construction from Structure CC MM CP to the Peñasquitos Substation Deepwell AC mitigation installation Construction activities at Sycamore Canyon and Peñasquitos Substations

MINOR PROJECT REFINEMENT & TEMPORARY EXTRA WORKSPACE REQUESTS

Tables 2 and 3 summarize the Minor Project Refinements (MPRs) and Temporary Extra Workspace (TEWS) Requests have been submitted to date.

Table 2 Minor Project Refinement (MPR) Requests

MPR Request	Date Submitted	Date Issued	Segment #	Description
#1	12/06/16	1/11/17	Segment A	Underground 230-kV getaway from Sycamore Substation to Structure P03.
#2	01/17/17	01/24/17	Segment B	Realignment of the 230-kV underground transmission line from Miramar Road north on Black Mountain Road and west on Activity Road.
#3	03/06/17	03/08/17	Segment A	Provides temporary power to the SDG&E trailer at the Stonebridge Staging Yard through the existing power box located outside of the existing Project boundary.
#4	04/18/17	04/20/17	Segment B	Modifies the approved 2.61-acre Vulcan Mine Yard location approximately 884 feet to the west to an approximately 1.71-acre paved area.

Table 3 Temporary Extra Workspace (TEWS) Requests

TEWS Request	Date Submitted	Date Issued	Segment #	Description
None to date				

NON-COMPLIANCES, PROJECT MEMORANDA & INCIDENTS

A Level 1: Minor Problem was recorded by the CPUC’s monitor on April 24, 2017 for the presence of trash along the Project alignment. “No trash receptacles” were observed at work sites and “high amounts of trash near work areas” along Carroll Road and Trade Street were observed. A response to the Level 1 Incident Report was provided to the CPUC on April 25, 2017. The response outlined the corrective actions that were immediately implemented by the contractor, including mobilization of crews to clean up trash/litter, tailboard communications on proper litter/trash management, increased trash inspections by the LEI, and pre- and post-work visual condition assessments.

Table 4 Non-Compliances, Project Memoranda, and Other Incidents

Type	Date	Location	Description
Level 1	04/12/2017	Segment B	Potable water was used in a street sweeper.
Level 1	04/24/2017	Segment B	Presence of trash along the project alignment.

ATTACHMENT A INSPECTION REPORTS

2017-04-23 PM Inspection Report

SDG&E Sycamore-Peñasquitos 230-kV Transmission Line Project: Daily Inspection Report

Inspection Date	2017-04-23
Start Time	19:45:00
End Time	00:00:00
Monitor Name	Dave Flietner
Organization	The Sanberg Group (Sanberg)
Summary of Construction Activities	Work was conducted at three sites: trenching on Trade St. and on Trade Place and vault work on Carroll Rd.
Summary of Compliance Activities	Three crews of resource monitors were on hand. After LEI was assured no new digging would occur at Carroll Rd., that crew was redeployed.
Were any issues encountered?	No

Photo Log

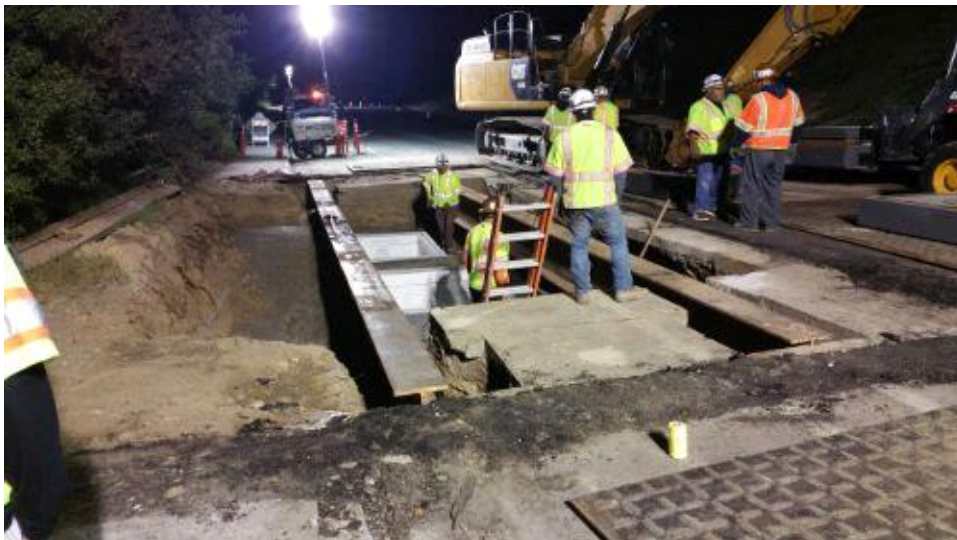
Photo



Caption Trenching on Trade St. Monitors (not shown) are on hand.

Photo Attributes Capture Date/Time: Sun Apr 23 2017 23:54:48 GMT-0700 (PDT)
Coordinates: 32.888749, -117.165455
View Direction: Southeast

Photo



Caption Work in vault on Carroll Rd (no new digging).

Photo Attributes Capture Date/Time: Sun Apr 23 2017 23:39:14 GMT-0700 (PDT)
Coordinates: 32.889086, -117.18215

View Direction: West

Photo



Caption Approach to Carroll Rd site from east. Two flaggers at this end.

Photo Attributes Capture Date/Time: Sun Apr 23 2017 23:35:29 GMT-0700 (PDT)
Coordinates: 32.888546, -117.179796
View Direction: Southwest

Photo



Caption Paleontologist monitoring trenching (Trade PI),

Photo Attributes Capture Date/Time: Sun Apr 23 2017 23:09:05 GMT-0700 (PDT)
Coordinates: 32.893005, -117.15355
View Direction: Northeast

Photo



Placing protective barriers around trench (Trade Pl.).

Photo Attributes Capture Date/Time: Sun Apr 23 2017 23:01:08 GMT-0700 (PDT)
Coordinates: 32.892588, -117.153514
View Direction: Northeast

Photo



Approach to staging area on Trade St. from east. Plates being delivered ; no flagger present, but this is compliant per Safety Officer (equipment properly lit).

Photo Attributes Capture Date/Time: Sun Apr 23 2017 22:25:21 GMT-0700 (PDT)
Coordinates: 32.889226, -117.155927
View Direction: West

Photo



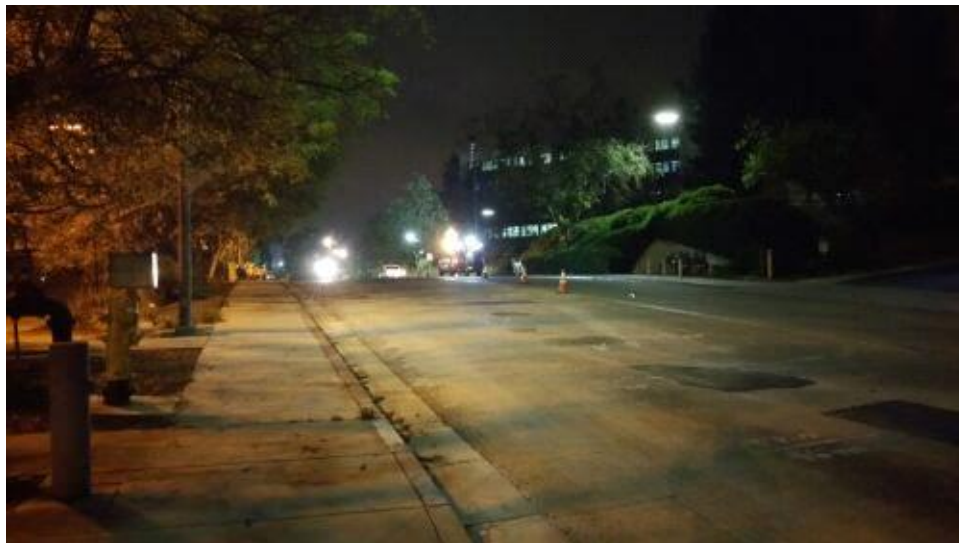
Caption Trenching on Trade Pl. (Not into soil yet).
 Photo Attributes Capture Date/Time: Sun Apr 23 2017 21:58:13 GMT-0700 (PDT)
 Coordinates: 32.892789, -117.153485
 View Direction: Northwest

Photo



Caption Flaggers (Trade Pl & Argonne) using red flashing lights to direct traffic. Improves visibility.
 Photo Attributes Capture Date/Time: Sun Apr 23 2017 21:27:09 GMT-0700 (PDT)
 Coordinates: 32.891695, -117.153292
 View Direction: North

Photo



Caption Crew placing cones on Trade St.
 Photo Attributes Capture Date/Time: Sun Apr 23 2017 21:04:55 GMT-0700 (PDT)
 Coordinates: 32.888869, -117.165904
 View Direction: East

Daily Checklist

Q1 – General Avoidance and Minimization: (a) Were the limits of work areas and access roads clearly marked? (b) Were construction activities limited to CPUC-approved work areas?

Met Requirements

Q1 Notes

Some large equipment in place before cones and lighting completely in place, but flaggers working in these areas and no safety issues for workers or drivers.

Q2 – Air Quality/GHG: (a) Were dust avoidance and minimization requirements implemented and monitored adequately? (b) Was dust generation below required thresholds? (c) Were equipment and vehicles maintained and operated in a manner to limit emissions? (d) Was organic waste collected and separated from non-organic waste for appropriate composting or recycling, as appropriate?

Met Requirements

Q2 Notes

Little dust generated while trenching.

Q3 – Special-Status Plants: Were impact avoidance and minimization requirements

N/A

for special-status plants implemented adequately (e.g., avoiding sensitive areas)?	
Q4 – Wildlife (Non-Avian): Were impact avoidance and minimization requirements for wildlife implemented adequately (e.g., avoiding sensitive areas, covering excavations, and inspecting equipment/trenches)?	Met Requirements
Q5 – Nesting and Burrowing Birds: (a) Were active nests and occupied burrows identified and monitored during applicable seasons, as required? (b) Were impact avoidance and minimization requirements for any active nests or occupied burrows implemented adequately?	Met Requirements
Q6 – Water Features and Aquatic Habitat: Were water features avoided?	N/A
Q7 – Stormwater, Erosion, and Sediment Control: (a) Were erosion and sediment control BMPs in place and functioning properly? (b) Were inactive or completed work areas stabilized and/or restored adequately?	Met Requirements
Q7 Notes	Filters present on all observed inlets.
Q8 – Invasive Weed Control: Were procedures to prevent the spread of invasive weeds implemented adequately?	N/A
Q9 – Hazardous Materials and Waste Management: (a) Were hazardous materials stored and labeled properly? (b) Was hazardous material waste disposed of appropriately? (c) Were any spills or leaks addressed adequately? (d) Was solid waste collected and disposed of adequately?	Met Requirements
Q9 Notes	Asphalt was loaded onto trucks for removal.
Q10 – Fire Management: (a) Were fire prevention procedures in place? (b) Was firefighting equipment available on site?	Met Requirements
Q11 – Cultural, Paleontological, and Tribal Resources: (a) Were cultural, paleontological, and tribal resources monitoring and impact avoidance occurring as required? (b) If potential resources or human remains were inadvertently discovered, were response procedures and protocols implemented as required?	Met Requirements
Q11 Notes	Three teams were present and were at work areas during digging.
Q12 – Construction Noise: (a) Were noise minimization measures in place, as required? (b) If noise complaints were received, were they documented and addressed, as required?	Met Requirements
Q13 – Maintain Access: (a) Was access to driveways (e.g., businesses, schools, residences) maintained as required? (b) Was access to recreational areas maintained and appropriate signage installed? (c) Was pedestrian and bicycle access maintained, or were detours clearly defined?	Met Requirements
Q14 – Traffic Control (a) Were flaggers present at all times? (b) Were barriers, cones, and signs in place? (c) Were detours clearly marked?	Met Requirements
Q14 Notes	Cones etc. placed properly, but with three work areas this took a little while to achieve. Flaggers present throughout construction.
Q15 – Helicopter Use (a) Were helicopter use restrictions implemented adequately? (b) Were helicopter take-off and landing sites within prescribed limits?	N/A
Q16 – Worker Training and Communication: Have all workers on site received the required environmental trainings for the project?	Met Requirements
Q17 – MMCRP Implementation: (a) Were project activities consistent with the approved project as defined in the EIR and subsequent CPUC authorizations? (b) Were MMCRP procedures implemented adequately?	Met Requirements

2017-04-24 Inspection Report

SDG&E Sycamore-Peñasquitos 230-kV Transmission Line Project: Daily Inspection Report

Inspection Date	2017-04-24
Start Time	09:03:00
End Time	10:56:00
Monitor Name	Dave Flietner
Organization	The Sanberg Group (Sanberg)
Summary of Construction Activities	None; daylight inspection.
Summary of Compliance Activities	None.
Were any issues encountered?	Yes

Incident Report

Incident Category	Compliance Level
MMCRP Compliance Level	Level 1: Minor Problems
Incident Start Date	2017-04-24
Resolution Date	2017-04-25
Summary of Incident	I did not observe trash receptacles at work sites. I observed relatively high amounts of trash near work areas, including ear protection, fresh Cheetos, un-rotted banana, oil container.

Photo Log

Photo



Caption Litter, Carroll Rd.

Photo Attributes Capture Date/Time: Mon Apr 24 2017 10:23:01 GMT-0700 (PDT)
Coordinates: 32.888828, -117.181154
View Direction: East

Photo



Caption Litter, Carroll Rd.

Photo Attributes Capture Date/Time: Mon Apr 24 2017 10:21:52 GMT-0700 (PDT)
Coordinates: 32.888948, -117.181226
View Direction: South

Photo



Caption Litter, Carroll Rd.

Photo Attributes Capture Date/Time: Mon Apr 24 2017 10:19:24 GMT-0700 (PDT)
Coordinates: 32.88912, -117.1821
View Direction: South

Photo



Caption Litter, Carroll Rd.

Photo Attributes Capture Date/Time: Mon Apr 24 2017 10:18:23 GMT-0700 (PDT)

Photo



Caption Litter, Carroll Rd.

Photo Attributes Capture Date/Time: Mon Apr 24 2017 10:15:42 GMT-0700 (PDT)
Coordinates: 32.889447, -117.182846
View Direction: West

Photo



Caption Improper waste disposal, Carroll Rd staging area.

Photo Attributes Capture Date/Time: Mon Apr 24 2017 10:09:45 GMT-0700 (PDT)
Coordinates: 32.889314, -117.180088
View Direction: South

Photo



Caption Drip pans in place, Carroll Rd & Brown Deer Staging area.
Photo Attributes Capture Date/Time: Mon Apr 24 2017 10:08:23 GMT-0700 (PDT)
Coordinates: 32.88932, -117.180081
View Direction: South

Photo



Caption Litter, Trade St.
Photo Attributes Capture Date/Time: Mon Apr 24 2017 09:57:00 GMT-0700 (PDT)
Coordinates: 32.888741, -117.165016
View Direction: South

Photo



Caption Litter, Trade St.
Photo Attributes Capture Date/Time: Mon Apr 24 2017 09:55:39 GMT-0700 (PDT)
Coordinates: 32.888785, -117.165341
View Direction: East

Photo



Caption Litter, Trade St.

Photo Attributes Capture Date/Time: Mon Apr 24 2017 09:54:44 GMT-0700 (PDT)
Coordinates: 32.888782, -117.165343
View Direction: West

Photo



Caption Litter, Trade St.

Photo Attributes Capture Date/Time: Mon Apr 24 2017 09:53:19 GMT-0700 (PDT)
Coordinates: 32.888842, -117.165369
View Direction: Southeast

Photo



Caption Litter, Trade St.

Photo Attributes Capture Date/Time: Mon Apr 24 2017 09:48:33 GMT-0700 (PDT)

Coordinates: 32.88862, -117.166725
View Direction: West

Photo



Caption Litter. Trade Pl.

Photo Attributes Capture Date/Time: Mon Apr 24 2017 09:47:38 GMT-0700 (PDT)
Coordinates: 32.888617, -117.166535
View Direction: South

Photo



Caption Litter, Trade St.

Photo Attributes Capture Date/Time: Mon Apr 24 2017 09:46:38 GMT-0700 (PDT)
Coordinates: 32.888568, -117.166424
View Direction: South

Photo



Caption GatorAde bottle, half eaten banana shown, water bottle, wrapper, and condiment package nearby. Trade St.

Photo Attributes Capture Date/Time: Mon Apr 24 2017 09:45:07 GMT-0700 (PDT)
Coordinates: 32.88856, -117.166395
View Direction: West

Photo



Caption Litter (unknown source), Trade St.

Photo Attributes Capture Date/Time: Mon Apr 24 2017 09:41:31 GMT-0700 (PDT)
Coordinates: 32.888634, -117.166089
View Direction: South

Photo



Caption Upturned filter fabric; Trade St.

Photo Attributes Capture Date/Time: Mon Apr 24 2017 09:32:53 GMT-0700 (PDT)
Coordinates: 32.888644, -117.160405
View Direction: North

Photo



Caption Litter; discarded earplugs and fresh Cheetos; Trade St & Carroll Way.

Photo Attributes Capture Date/Time: Mon Apr 24 2017 09:29:20 GMT-0700 (PDT)
Coordinates: 32.889004, -117.159274
View Direction: West

Photo



Caption Sediment caught by filter fabric, Trade St. staging area.

Photo Attributes Capture Date/Time: Mon Apr 24 2017 09:22:51 GMT-0700 (PDT)
Coordinates: 32.889051, -117.156124
View Direction: South

Photo



Caption Litter (source unknown) Trade Pl & Dunbrook.

Photo Attributes Capture Date/Time: Mon Apr 24 2017 09:11:39 GMT-0700 (PDT)

Photo



Caption Filter fabric not flush with road surface; Trade PI & Dunbrook.

Photo Attributes Capture Date/Time: Mon Apr 24 2017 09:09:06 GMT-0700 (PDT)
Coordinates: 32.8925, -117.153222
View Direction: South

Photo



Caption Trench plates at Trade PI. site; traffic moving freely.

Photo Attributes Capture Date/Time: Mon Apr 24 2017 09:05:01 GMT-0700 (PDT)
Coordinates: 32.893065, -117.153477
View Direction: South

Daily Checklist

Q1 – General Avoidance and Minimization: (a) Were the limits of work areas and access roads clearly marked? (b) Were construction activities limited to CPUC-approved work areas?	Met Requirements
Q2 – Air Quality/GHG: (a) Were dust avoidance and minimization requirements implemented and monitored adequately? (b) Was dust generation below required thresholds? (c) Were equipment and vehicles maintained and operated in a manner to limit emissions? (d) Was organic waste collected and separated from non-organic waste for appropriate composting or recycling, as appropriate?	N/A
Q3 – Special-Status Plants: Were impact avoidance and minimization requirements for special-status plants implemented adequately (e.g., avoiding sensitive areas)?	N/A
Q4 – Wildlife (Non-Avian): Were impact avoidance and minimization requirements for wildlife implemented adequately (e.g., avoiding sensitive areas, covering excavations, and inspecting equipment/trenches)?	N/A
Q5 – Nesting and Burrowing Birds: (a) Were active nests and occupied burrows identified and monitored during applicable	Met Requirements

seasons, as required? (b) Were impact avoidance and minimization requirements for any active nests or occupied burrows implemented adequately?

Q6 – Water Features and Aquatic Habitat: Were water features avoided? N/A

Q7 – Stormwater, Erosion, and Sediment Control: (a) Were erosion and sediment control BMPs in place and functioning properly? (b) Were inactive or completed work areas stabilized and/or restored adequately? Met Requirements

Q7 Notes Filter fabric appeared to be functional and previously damaged gravel bags had been replaced.

Q8 – Invasive Weed Control: Were procedures to prevent the spread of invasive weeds implemented adequately? N/A

Q9 – Hazardous Materials and Waste Management: (a) Were hazardous materials stored and labeled properly? (b) Was hazardous material waste disposed of appropriately? (c) Were any spills or leaks addressed adequately? (d) Was solid waste collected and disposed of adequately? Corrections Required

Q9 Notes Oil container, organic and inorganic trash found in work areas at higher than base levels: I counted all trash near sidewalk on opposite sides of Carroll Rd and noted 50 discrete pieces on south side, where work was done vs. 6 on north side.

Q10 – Fire Management: (a) Were fire prevention procedures in place? (b) Was firefighting equipment available on site? N/A

Q11 – Cultural, Paleontological, and Tribal Resources: (a) Were cultural, paleontological, and tribal resources monitoring and impact avoidance occurring as required? (b) If potential resources or human remains were inadvertently discovered, were response procedures and protocols implemented as required? N/A

Q12 – Construction Noise: (a) Were noise minimization measures in place, as required? (b) If noise complaints were received, were they documented and addressed, as required? N/A

Q13 – Maintain Access: (a) Was access to driveways (e.g., businesses, schools, residences) maintained as required? (b) Was access to recreational areas maintained and appropriate signage installed? (c) Was pedestrian and bicycle access maintained, or were detours clearly defined? N/A

Q14 – Traffic Control (a) Were flaggers present at all times? (b) Were barriers, cones, and signs in place? (c) Were detours clearly marked? N/A

Q15 – Helicopter Use (a) Were helicopter use restrictions implemented adequately? (b) Were helicopter take-off and landing sites within prescribed limits? N/A

Q16 – Worker Training and Communication: Have all workers on site received the required environmental trainings for the project? N/A

Q17 – MMCRP Implementation: (a) Were project activities consistent with the approved project as defined in the EIR and subsequent CPUC authorizations? (b) Were MMCRP procedures implemented adequately? Met Requirements

2017-04-24 PM Inspection Report

SDG&E Sycamore-Peñasquitos 230-kV Transmission Line Project: Daily Inspection Report

Inspection Date	2017-04-24
Start Time	20:00:00
End Time	00:00:00
Monitor Name	Jerry Scott
Organization	The Sanberg Group (Sanberg)
Summary of Construction Activities	Crews were excavating, trenching, shoring, placing steel plates in place, cutting asphalt and patching asphalt.
Summary of Compliance Activities	Fire prevention training was given at the tailboard meeting this evening by SDG&E. Traffic safety measures were in practice, BMP's were in place, work areas were well lit and marked.
Were any issues encountered?	No

Photo Log

Photo



Caption Excavation in progress, little to no dust created.

Photo Attributes Capture Date/Time: Mon Apr 24 2017 21:32:32 GMT-0700 (PDT)
Coordinates: 32.888851, -117.163902
View Direction: Southwest

Photo



Caption BMPs in place.

Photo Attributes Capture Date/Time: Mon Apr 24 2017 21:30:02 GMT-0700 (PDT)
Coordinates: 32.888776, -117.162716
View Direction: South

Photo



Caption Lighting, cones, signage, and traffic flaggers in place

Photo Attributes Capture Date/Time: Mon Apr 24 2017 21:17:02 GMT-0700 (PDT)
Coordinates: 32.889459, -117.183298
View Direction: East

Photo



Caption Drip pans in place in storage yard.

Photo Attributes Capture Date/Time: Mon Apr 24 2017 21:13:17 GMT-0700 (PDT)
 Coordinates: 32.891148, -117.191626
 View Direction: Southwest

Photo



Caption Compliance reminder signs at storage yard entrance

Photo Attributes Capture Date/Time: Mon Apr 24 2017 21:11:17 GMT-0700 (PDT)
 Coordinates: 32.891240, -117.191781
 View Direction: Northeast

Daily Checklist

Q1 – General Avoidance and Minimization: (a) Were the limits of work areas and access roads clearly marked? (b) Were construction activities limited to CPUC-approved work areas? Met Requirements

Q1 Notes Work area limits were clearly marked and within CPUC-approved work areas.

Q2 – Air Quality/GHG: (a) Were dust avoidance and Met Requirements

minimization requirements implemented and monitored adequately? (b) Was dust generation below required thresholds? (c) Were equipment and vehicles maintained and operated in a manner to limit emissions? (d) Was organic waste collected and separated from non-organic waste for appropriate composting or recycling, as appropriate?

Q2 Notes

Dust levels were little to none. No vehicles were observed idling over the 5-minute limit.

Q3 – Special-Status Plants: Were impact avoidance and minimization requirements for special-status plants implemented adequately (e.g., avoiding sensitive areas)?

N/A

Q3 Notes

No special status plants within tonight's work areas.

Q4 – Wildlife (Non-Avian): Were impact avoidance and minimization requirements for wildlife implemented adequately (e.g., avoiding sensitive areas, covering excavations, and inspecting equipment/trenches)?

Met Requirements

Q4 Notes

All excavation areas were covered with steel plates. Bird netting was covering stationary equipment in the storage yard.

Q5 – Nesting and Burrowing Birds: (a) Were active nests and occupied burrows identified and monitored during applicable seasons, as required? (b) Were impact avoidance and minimization requirements for any active nests or occupied burrows implemented adequately?

Met Requirements

Q5 Notes

Active nests were recorded and avoided. No active nests in the immediate area of tonight's work. Work lights were focused on the ground.

Q6 – Water Features and Aquatic Habitat: Were water features avoided?

N/A

Q6 Notes

No aquatic areas in tonight's work areas.

Q7 – Stormwater, Erosion, and Sediment Control: (a) Were erosion and sediment control BMPs in place and functioning properly? (b) Were inactive or completed work areas stabilized and/or restored adequately?

Met Requirements

Q7 Notes

All BMPs were in place and in good working order.

Q8 – Invasive Weed Control: Were procedures to prevent the spread of invasive weeds implemented adequately?

Met Requirements

Q8 Notes

Steel shaker plates were located at the storage yard entrance. No off road access roads within tonight's work areas.

Q9 – Hazardous Materials and Waste Management: (a) Were hazardous materials stored and labeled properly? (b) Was hazardous material waste disposed of appropriately? (c) Were any spills or leaks addressed adequately? (d) Was solid waste collected and disposed of adequately?

Met Requirements

Q9 Notes

All hazardous waste were properly stored and clearly labeled.

Q10 – Fire Management: (a) Were fire prevention procedures in place? (b) Was firefighting equipment available on site?

Met Requirements

Q10 Notes

Fire prevention measures were observed and included additional training at tonight's tailboard at the ARB office by an official from SDG&E.

Q11 – Cultural, Paleontological, and Tribal Resources: (a) Were cultural, paleontological, and tribal resources monitoring and impact avoidance occurring as required? (b) If potential resources or human remains were inadvertently discovered, were response procedures and protocols implemented as required?

Met Requirements

Q11 Notes

All cultural, paleo, tribal, and bio monitors were on site.

Q12 – Construction Noise: (a) Were noise minimization measures in place, as required? (b) If noise complaints were received, were they documented and addressed, as required?

Met Requirements

Q12 Notes

Noise prevention measures were in practice and no complaints received.

Q13 – Maintain Access: (a) Was access to driveways (e.g., businesses, schools, residences) maintained as required? (b) Was access to recreational areas maintained and appropriate signage installed? (c) Was pedestrian and bicycle access maintained, or were detours clearly defined?

Met Requirements

Q13 Notes

Access to local business and driveways remained open throughout the nights work

Q14 – Traffic Control (a) Were flaggers present at all times? (b) Were barriers, cones, and signs in place? (c) Were detours clearly marked?

Met Requirements

Q14 Notes

Cones, markers, signage, and traffic flaggers were in place.

Q15 – Helicopter Use (a) Were helicopter use restrictions implemented adequately? (b) Were helicopter take-off and landing sites within prescribed limits?

N/A

Q15 Notes

No helicopters were in use for tonight's work.

Q16 – Worker Training and Communication: Have all workers on site received the required environmental trainings for the project?

Met Requirements

Q16 Notes

All on site personnel were properly trained and displayed training stickers on their hard hats.

Q17 – MMRP Implementation: (a) Were project activities consistent with the approved project as defined in the EIR and subsequent CPUC authorizations? (b) Were MMRP procedures implemented adequately?

Met Requirements

Q17 Notes

Mitigation measures were implemented in accordance with EIR and CPUC measures.

2017-04-25 AM Inspection Report

SDG&E Sycamore-Peñasquitos 230-kV Transmission Line Project: Daily Inspection Report

Inspection Date	2017-04-25
Start Time	04:30:00
End Time	06:30:00
Monitor Name	Jerry Scott
Organization	The Sanberg Group (Sanberg)
Summary of Construction Activities	Crews were excavating, trenching and shoring, cutting and patching asphalt, and street sweeping.
Summary of Compliance Activities	LEI, tribal, cultural, Paleo, bio monitors were all on site. Fire, random dust, and noise prevention measures were in practice. Traffic safety measures were in practice. BMPs were in place. Driveways and access to local business were maintained throughout the night.
Were any issues encountered?	No

Photo Log

Photo



Caption Digital traffic signs in use.

Photo Attributes Capture Date/Time: Tue Apr 25 2017 06:31:25 GMT-0700 (PDT)
Coordinates: 32.885440, -117.168333
View Direction: West

Photo



Caption BMP's in place for SWPPP.

Photo Attributes Capture Date/Time: Tue Apr 25 2017 06:27:39 GMT-0700 (PDT)
Coordinates: 32.889260, -117.182654
View Direction: West

Photo



Caption Steel plates in place covering trenches.

Photo Attributes Capture Date/Time: Tue Apr 25 2017 06:24:28 GMT-0700 (PDT)
Coordinates: 32.889232, -117.182369
View Direction: East

Photo



Caption Bird netting on water tank.

Photo Attributes Capture Date/Time: Tue Apr 25 2017 06:20:41 GMT-0700 (PDT)
 Coordinates: 32.891036, -117.191273
 View Direction: Southwest

Photo



Caption Hazardous waste properly stored and labeled.

Photo Attributes Capture Date/Time: Tue Apr 25 2017 06:18:51 GMT-0700 (PDT)
 Coordinates: 32.891016, -117.191337
 View Direction: East

Daily Checklist

Q1 – General Avoidance and Minimization: (a) Were the limits of work areas and access roads clearly marked? (b) Were construction activities limited to CPUC-approved work areas?

Met Requirements

Q1 Notes

Work areas were clearly marked and within CPUC-approved work areas.

Q2 – Air Quality/GHG: (a) Were dust avoidance and minimization requirements implemented and monitored

Met Requirements

adequately? (b) Was dust generation below required thresholds? (c) Were equipment and vehicles maintained and operated in a manner to limit emissions? (d) Was organic waste collected and separated from non-organic waste for appropriate composting or recycling, as appropriate?

Q2 Notes	There was little to no random dust created throughout the night. No vehicles were observed idling over the 5-minute limit.
Q3 – Special-Status Plants: Were impact avoidance and minimization requirements for special-status plants implemented adequately (e.g., avoiding sensitive areas)?	N/A
Q3 Notes	No special status plants within the immediate work area tonight.
Q4 – Wildlife (Non-Avian): Were impact avoidance and minimization requirements for wildlife implemented adequately (e.g., avoiding sensitive areas, covering excavations, and inspecting equipment/trenches)?	Met Requirements
Q4 Notes	Lighting was down-facing to avoid disturbing nearby avian species and trenches were covered with steel plates.
Q5 – Nesting and Burrowing Birds: (a) Were active nests and occupied burrows identified and monitored during applicable seasons, as required? (b) Were impact avoidance and minimization requirements for any active nests or occupied burrows implemented adequately?	Met Requirements
Q5 Notes	Active nests were identified and avoided within the project. There were no active nests within the immediate work areas.
Q6 – Water Features and Aquatic Habitat: Were water features avoided?	N/A
Q6 Notes	No water features observed within the immediate work areas.
Q7 – Stormwater, Erosion, and Sediment Control: (a) Were erosion and sediment control BMPs in place and functioning properly? (b) Were inactive or completed work areas stabilized and/or restored adequately?	Met Requirements
Q7 Notes	All BMPs were in place and functioning correctly.
Q8 – Invasive Weed Control: Were procedures to prevent the spread of invasive weeds implemented adequately?	Met Requirements
Q8 Notes	Steel shaker plates were in place and no off-road work in tonight's work area.
Q9 – Hazardous Materials and Waste Management: (a) Were hazardous materials stored and labeled properly? (b) Was hazardous material waste disposed of appropriately? (c) Were any spills or leaks addressed adequately? (d) Was solid waste collected and disposed of adequately?	Met Requirements
Q9 Notes	Hazardous waste was properly stored and labeled.
Q10 – Fire Management: (a) Were fire prevention procedures in place? (b) Was firefighting equipment available on site?	Met Requirements
Q10 Notes	Fire prevention practices were in place, along with SDG&E fire prevention training in tonight's tailboard.
Q11 – Cultural, Paleontological, and Tribal Resources: (a) Were cultural, paleontological, and tribal resources monitoring and impact avoidance occurring as required? (b) If potential resources or human remains were inadvertently discovered, were response procedures and protocols implemented as required?	Met Requirements
Q11 Notes	Cultural, paleo, tribal, and bio monitors were on site and thus far no human remains discovered.
Q12 – Construction Noise: (a) Were noise minimization measures in place, as required? (b) If noise complaints were received, were they documented and addressed, as required?	Met Requirements
Q12 Notes	Noise prevention measures were in use, such as no back-up alarms on trucks, using flashing beacons in their place.
Q13 – Maintain Access: (a) Was access to driveways (e.g., businesses, schools, residences) maintained as required? (b) Was access to recreational areas maintained and appropriate signage installed? (c) Was pedestrian and bicycle access maintained, or were detours clearly defined?	Met Requirements
Q13 Notes	Access was maintained throughout the night to local businesses and driveways
Q14 – Traffic Control (a) Were flaggers present at all times? (b)	Met Requirements

Were barriers, cones, and signs in place? (c) Were detours clearly marked?

Q14 Notes

All cones, barriers, signage, and traffic flaggers were in place.

Q15 – Helicopter Use (a) Were helicopter use restrictions implemented adequately? (b) Were helicopter take-off and landing sites within prescribed limits?

N/A

Q15 Notes

No helicopters were used in tonight's work.

Q16 – Worker Training and Communication: Have all workers on site received the required environmental trainings for the project?

Met Requirements

Q16 Notes

All personnel on site were properly trained and had their training stickers visible on their hard hats.

Q17 – MMCRP Implementation: (a) Were project activities consistent with the approved project as defined in the EIR and subsequent CPUC authorizations? (b) Were MMCRP procedures implemented adequately?

Met Requirements

Q17 Notes

All mitigation measures were observed and implemented adequately.

2017-04-25 PM Inspection Report

SDG&E Sycamore- Peñasquitos 230-kV Transmission Line Project: Daily Inspection Report

Inspection Date	2017-04-25
Start Time	20:00:00
End Time	00:00:00
Monitor Name	Jerry Scott
Organization	The Sanberg Group (Sanberg)
Summary of Construction Activities	Crews are trenching and shoring, excavating, placing and removing steel plates, and working on gas line.
Summary of Compliance Activities	LEI, paleo, cultural, tribal and bio monitors, superintendent, SDG&E officials were all on site. BMPs were in place and in good working order. Lighting was in place and facing down. Dust and fire prevention measures were in place. Work limits were clearly marked and within CPUC-approved work areas. Dust was at a minimum and no vehicles were observed idling over the 5-minute limit.
Were any issues encountered?	No

Photo Log

Photo



Caption BMP's in place for SWPPP.

Photo Attributes Capture Date/Time: Tue Apr 25 2017 22:00:31 GMT-0700 (PDT)
Coordinates: 32.892520, -117.153133
View Direction: North

Photo



Caption Trenching activity with lighting and signage and traffic flaggers in place.

Photo Attributes Capture Date/Time: Tue Apr 25 2017 21:55:47 GMT-0700 (PDT)
Coordinates: 32.892688, -117.153263
View Direction: West

Photo



Caption Abundant lighting in place for work.

Photo Attributes Capture Date/Time: Tue Apr 25 2017 21:21:46 GMT-0700 (PDT)
Coordinates: 32.888991, -117.159300
View Direction: West

Photo



Caption Traffic flaggers at work.

Photo Attributes Capture Date/Time: Tue Apr 25 2017 21:19:24 GMT-0700 (PDT)
 Coordinates: 32.888894, -117.158855
 View Direction: Northwest

Photo



Caption Digital traffic signage in place.

Photo Attributes Capture Date/Time: Tue Apr 25 2017 20:36:51 GMT-0700 (PDT)
 Coordinates: 32.894529, -117.146901
 View Direction: West

Daily Checklist

Q1 – General Avoidance and Minimization: (a) Were the limits of work areas and access roads clearly marked? (b) Were construction activities limited to CPUC-approved work areas? Met Requirements

Q1 Notes Work areas were clearly marked and within CPUC-approved work areas.

Q2 – Air Quality/GHG: (a) Were dust avoidance and minimization requirements implemented and monitored Met Requirements

adequately? (b) Was dust generation below required thresholds? (c) Were equipment and vehicles maintained and operated in a manner to limit emissions? (d) Was organic waste collected and separated from non-organic waste for appropriate composting or recycling, as appropriate?

Q2 Notes	Dust was at a minimum and no vehicles were observed idling over the 5-minute limit.
Q3 – Special-Status Plants: Were impact avoidance and minimization requirements for special-status plants implemented adequately (e.g., avoiding sensitive areas)?	N/A
Q3 Notes	No special status plants were in tonight's approved work areas.
Q4 – Wildlife (Non-Avian): Were impact avoidance and minimization requirements for wildlife implemented adequately (e.g., avoiding sensitive areas, covering excavations, and inspecting equipment/trenches)?	Met Requirements
Q4 Notes	All trenches worked on were sealed upon arrival and sealed upon completion or leaving for the nights work.
Q5 – Nesting and Burrowing Birds: (a) Were active nests and occupied burrows identified and monitored during applicable seasons, as required? (b) Were impact avoidance and minimization requirements for any active nests or occupied burrows implemented adequately?	N/A
Q5 Notes	No nests were in the immediate work areas for tonight's work.
Q6 – Water Features and Aquatic Habitat: Were water features avoided?	N/A
Q6 Notes	No water features in the immediate area of tonight's work.
Q7 – Stormwater, Erosion, and Sediment Control: (a) Were erosion and sediment control BMPs in place and functioning properly? (b) Were inactive or completed work areas stabilized and/or restored adequately?	Met Requirements
Q7 Notes	All BMP's were in place and good working order.
Q8 – Invasive Weed Control: Were procedures to prevent the spread of invasive weeds implemented adequately?	Met Requirements
Q8 Notes	Steel shaker plates were in place at the entrance to the storage yard to minimize the transfer of seeds from equipment to other areas of the project.
Q9 – Hazardous Materials and Waste Management: (a) Were hazardous materials stored and labeled properly? (b) Was hazardous material waste disposed of appropriately? (c) Were any spills or leaks addressed adequately? (d) Was solid waste collected and disposed of adequately?	Met Requirements
Q9 Notes	Hazardous materials were clearly labeled and properly stored with secondary containment in place.
Q10 – Fire Management: (a) Were fire prevention procedures in place? (b) Was firefighting equipment available on site?	Met Requirements
Q10 Notes	Fire prevention measures were in place.
Q11 – Cultural, Paleontological, and Tribal Resources: (a) Were cultural, paleontological, and tribal resources monitoring and impact avoidance occurring as required? (b) If potential resources or human remains were inadvertently discovered, were response procedures and protocols implemented as required?	Met Requirements
Q11 Notes	All cultural, paleo, tribal, and bio monitors were on site. No human remains have been encountered at this point of the project.
Q12 – Construction Noise: (a) Were noise minimization measures in place, as required? (b) If noise complaints were received, were they documented and addressed, as required?	Met Requirements
Q12 Notes	Noise reduction measures were in use to minimize noise generated from the project
Q13 – Maintain Access: (a) Was access to driveways (e.g., businesses, schools, residences) maintained as required? (b) Was access to recreational areas maintained and appropriate signage installed? (c) Was pedestrian and bicycle access maintained, or were detours clearly defined?	Met Requirements
Q13 Notes	Driveways and access to local business was maintained and managed throughout the night's work.
Q14 – Traffic Control (a) Were flaggers present at all times?	Met Requirements

(b) Were barriers, cones, and signs in place? (c) Were detours clearly marked?

Q14 Notes

All cones, barriers, markers, signage, and traffic flaggers were in place throughout the project work area.

Q15 – Helicopter Use (a) Were helicopter use restrictions implemented adequately? (b) Were helicopter take-off and landing sites within prescribed limits?

N/A

Q15 Notes

No helicopters in use.

Q16 – Worker Training and Communication: Have all workers on site received the required environmental trainings for the project?

Met Requirements

Q16 Notes

All personnel on site were properly trained and displayed training stickers on their hard hats

Q17 – MMCRP Implementation: (a) Were project activities consistent with the approved project as defined in the EIR and subsequent CPUC authorizations? (b) Were MMCRP procedures implemented adequately?

Met Requirements

Q17 Notes

All mitigation measures were in place and practiced throughout the evenings work tasks.

2017-04-26 AM Inspection Report

SDG&E Sycamore- Peñasquitos 230-kV Transmission Line Project: Daily Inspection Report

Inspection Date	2017-04-26
Start Time	04:00:00
End Time	07:00:00
Monitor Name	Jerry Scott
Organization	The Sanberg Group (Sanberg)
Summary of Construction Activities	Crews were excavating, trenching and shoring, installing and removing steel plates, and working on gas line.
Summary of Compliance Activities	LEI, paleo, cultural, and bio monitors were all on site. Superintendents, inspectors, SDG&E officials were on site as well. Cones, barriers, signage, and traffic flaggers were all in place. Dust, noise, and fire prevention measures, were all in practice. Work limits were clearly marked and within CPUC-approved work areas. Trenches were sealed when not under construction. Adequate lighting was in use and directed downward to avoid avian species in surrounding trees.
Were any issues encountered?	No

Photo Log

Photo



Caption BMPs in place and in good working order.

Photo Attributes Capture Date/Time: Wed Apr 26 2017 06:03:28 GMT-0700 (PDT)
Coordinates: 32.888772, -117.160560
View Direction: Southeast

Photo



Caption Trenches put in place and sealed with asphalt upon completion of the night's work.

Photo Attributes Capture Date/Time: Wed Apr 26 2017 05:24:43 GMT-0700 (PDT)
Coordinates: 32.892984, -117.153319
View Direction: West

Photo



Caption Adequate lighting and signage in place.

Photo Attributes Capture Date/Time: Wed Apr 26 2017 05:20:30 GMT-0700 (PDT)
Coordinates: 32.888991, -117.158891
View Direction: East

Photo



Caption Digital construction warning signage in place.
Photo Attributes Capture Date/Time: Wed Apr 26 2017 05:08:41 GMT-0700 (PDT)
 Coordinates: 32.889451, -117.179914
 View Direction: Southwest

Photo



Caption Shaker plates in place at storage yard entrance.
Photo Attributes Capture Date/Time: Wed Apr 26 2017 04:38:50 GMT-0700 (PDT)
 Coordinates: 32.891168, -117.191656
 View Direction: West

Daily Checklist

Q1 – General Avoidance and Minimization: (a) Were the limits of work areas and access roads clearly marked? (b) Were construction activities limited to CPUC-approved work areas?

Met Requirements

Q1 Notes

Work areas were clearly marked and within CPUC-approved work areas.

Q2 – Air Quality/GHG: (a) Were dust avoidance and minimization requirements implemented and monitored adequately? (b) Was dust generation below required thresholds? (c) Were equipment and vehicles maintained and operated in a manner to limit emissions? (d) Was organic waste collected and separated from non-organic waste for appropriate composting or recycling, as appropriate?	Met Requirements
Q2 Notes	There was little to no dust observed and no vehicles were observed idling over the 5-minute limit.
Q3 – Special-Status Plants: Were impact avoidance and minimization requirements for special-status plants implemented adequately (e.g., avoiding sensitive areas)?	N/A
Q3 Notes	No special status plants in tonight's work areas.
Q4 – Wildlife (Non-Avian): Were impact avoidance and minimization requirements for wildlife implemented adequately (e.g., avoiding sensitive areas, covering excavations, and inspecting equipment/trenches)?	Met Requirements
Q4 Notes	Trenches were covered when not under construction and sealed with asphalt.
Q5 – Nesting and Burrowing Birds: (a) Were active nests and occupied burrows identified and monitored during applicable seasons, as required? (b) Were impact avoidance and minimization requirements for any active nests or occupied burrows implemented adequately?	N/A
Q5 Notes	No active nests within the immediate area of tonight's work.
Q6 – Water Features and Aquatic Habitat: Were water features avoided?	N/A
Q6 Notes	No water features in the immediate area.
Q7 – Stormwater, Erosion, and Sediment Control: (a) Were erosion and sediment control BMPs in place and functioning properly? (b) Were inactive or completed work areas stabilized and/or restored adequately?	Met Requirements
Q7 Notes	All BMPs were in place and in good working order.
Q8 – Invasive Weed Control: Were procedures to prevent the spread of invasive weeds implemented adequately?	Met Requirements
Q8 Notes	Steel shaker plates are installed at the entrance to the materials storage yard.
Q9 – Hazardous Materials and Waste Management: (a) Were hazardous materials stored and labeled properly? (b) Was hazardous material waste disposed of appropriately? (c) Were any spills or leaks addressed adequately? (d) Was solid waste collected and disposed of adequately?	Met Requirements
Q9 Notes	All hazardous materials were clearly labeled and stored in secondary containment.
Q10 – Fire Management: (a) Were fire prevention procedures in place? (b) Was firefighting equipment available on site?	Met Requirements
Q10 Notes	Fire prevention measures were in place and fire-fighting equipment was readily available.
Q11 – Cultural, Paleontological, and Tribal Resources: (a) Were cultural, paleontological, and tribal resources monitoring and impact avoidance occurring as required? (b) If potential resources or human remains were inadvertently discovered, were response procedures and protocols implemented as required?	Met Requirements
Q11 Notes	Cultural, paleo, and tribal monitors were on site. No human remains were encountered.
Q12 – Construction Noise: (a) Were noise minimization measures in place, as required? (b) If noise complaints were received, were they documented and addressed, as required?	Met Requirements
Q12 Notes	Noise minimization measures were in place. No complaints had been received.
Q13 – Maintain Access: (a) Was access to driveways (e.g., businesses, schools, residences) maintained as required? (b) Was access to recreational areas maintained and appropriate signage installed? (c) Was pedestrian and bicycle access maintained, or were detours clearly defined?	Met Requirements
Q13 Notes	All access to local business and driveways were maintained throughout tonight's work.
Q14 – Traffic Control (a) Were flaggers present at all times? (b) Were barriers, cones, and signs in place? (c) Were detours clearly marked?	Met Requirements
Q14 Notes	Cones, barriers, signage, and traffic flaggers were in place.
Q15 – Helicopter Use (a) Were helicopter use restrictions implemented adequately? (b) Were helicopter take-off and landing sites within prescribed limits?	N/A
Q15 Notes	No helicopters in use.
Q16 – Worker Training and Communication: Have all workers on site received the required environmental trainings for the project?	Met Requirements

Q16 Notes

All personnel on site were properly trained and displayed training stickers on their hard hats.

Q17 – MMCRP Implementation: (a) Were project activities consistent with the approved project as defined in the EIR and subsequent CPUC authorizations? (b) Were MMCRP procedures implemented adequately?

Met Requirements

Q17 Notes

All mitigation measures were in place and observed during tonight's work tasks.

2017-04-27 PM Inspection Report

SDG&E Sycamore- Peñasquitos 230-kV Transmission Line Project: Daily Inspection Report

Inspection Date	2017-04-27
Start Time	20:20:00
End Time	23:20:00
Monitor Name	Korey Klutz
Organization	The Sanberg Group (Sanberg)
Summary of Construction Activities	Three active work sites. Excavation along Carroll road (trenching and vault excavation), trenching and placing of conduit on Trade Street and vault work on Arjons Road.
Summary of Compliance Activities	CPUC Monitor drove ROW within planned work sites prior to the start of work. Traffic safety personnel was actively setting up traffic control measures from 8:30pm to 9:00pm. Work began promptly at 9:00pm. Monitors including paleo, cultural and Native American were onsite at each site where resources were potentially present. LEI was coordinating overall compliance.
Were any issues encountered?	No

Photo Log

Photo



Caption Arjons work site.

Photo Attributes Capture Date/Time: Thu Apr 27 2017 23:14:22 GMT-0700 (PDT)
Coordinates: 32.894524, -117.141403
View Direction: East

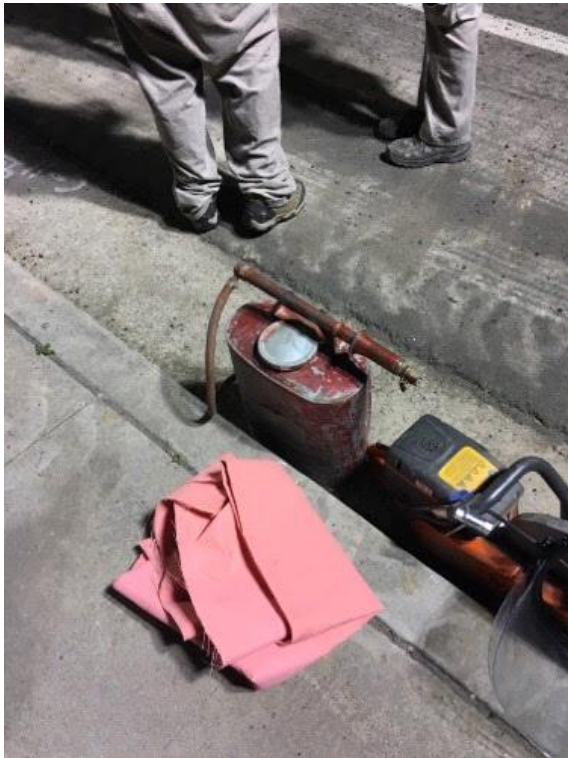
Photo



Caption Road resurfacing on Trade.

Photo Attributes Capture Date/Time: Thu Apr 27 2017 23:05:30 GMT-0700 (PDT)
Coordinates: 32.893324, -117.153320
View Direction: West

Photo



Caption Fire equipment at Carrol Way.

Photo Attributes Capture Date/Time: Thu Apr 27 2017 22:02:12 GMT-0700 (PDT)
Coordinates: 32.889542, -117.178622
View Direction: Northwest

Photo



Caption Trench plates (Carrol Way).

Photo Attributes Capture Date/Time: Thu Apr 27 2017 22:01:35 GMT-0700 (PDT)
Coordinates: 32.889552, -117.178643
View Direction: Northwest

Photo



Caption Monitors and site tailboard just completed prior to lifting plates (Carrol Way). Notice BMPs installed at storm drain.

Photo Attributes Capture Date/Time: Thu Apr 27 2017 22:00:29 GMT-0700 (PDT)
Coordinates: 32.889552, -117.178645
View Direction: Northwest

Photo



Caption Traffic control on Carrol Way.

Photo Attributes Capture Date/Time: Thu Apr 27 2017 21:03:16 GMT-0700 (PDT)
Coordinates: 32.888453, -117.191334
View Direction: Northwest

Daily Checklist

Q1 – General Avoidance and Minimization: (a) Were the limits of work areas and access roads clearly marked? (b) Were construction activities limited to CPUC-approved work areas?	Met Requirements
Q1 Notes	LEI and monitors onsite actively monitoring for compliance.
Q2 – Air Quality/GHG: (a) Were dust avoidance and minimization requirements implemented and monitored adequately? (b) Was dust generation below required thresholds? (c) Were equipment and vehicles maintained and operated in a manner to limit emissions? (d) Was organic waste collected and separated from non-organic waste for appropriate composting or recycling, as appropriate?	Met Requirements
Q3 – Special-Status Plants: Were impact avoidance and minimization requirements for special-status plants implemented adequately (e.g., avoiding sensitive areas)?	N/A
Q4 – Wildlife (Non-Avian): Were impact avoidance and minimization requirements for wildlife implemented adequately (e.g., avoiding sensitive areas, covering excavations, and inspecting equipment/trenches)?	N/A
Q5 – Nesting and Burrowing Birds: (a) Were active nests and occupied burrows identified and monitored during applicable seasons, as required? (b) Were impact avoidance and minimization requirements for any active nests or occupied burrows implemented adequately?	N/A
Q6 – Water Features and Aquatic Habitat: Were water features avoided?	N/A
Q7 – Stormwater, Erosion, and Sediment Control: (a) Were erosion and sediment control BMPs in place and functioning properly? (b) Were inactive or completed work areas stabilized and/or restored adequately?	Met Requirements
Q7 Notes	BMPs were installed at each active work site.
Q8 – Invasive Weed Control: Were procedures to prevent the spread of invasive weeds implemented adequately?	N/A
Q9 – Hazardous Materials and Waste Management: (a) Were hazardous materials stored and labeled properly? (b) Was hazardous material waste disposed of appropriately? (c) Were any spills or leaks addressed adequately? (d) Was solid waste collected and disposed of adequately?	Met Requirements
Q10 – Fire Management: (a) Were fire prevention procedures	Met Requirements

in place? (b) Was firefighting equipment available on site?

Q11 – Cultural, Paleontological, and Tribal Resources: (a) Were cultural, paleontological, and tribal resources monitoring and impact avoidance occurring as required? (b) If potential resources or human remains were inadvertently discovered, were response procedures and protocols implemented as required?

Met Requirements

Q11 Notes

Monitors on site at Carrol Way (2 crews) and at Arjons. Monitors were not required at Trade Place.

Q12 – Construction Noise: (a) Were noise minimization measures in place, as required? (b) If noise complaints were received, were they documented and addressed, as required?

Met Requirements

Q13 – Maintain Access: (a) Was access to driveways (e.g., businesses, schools, residences) maintained as required? (b) Was access to recreational areas maintained and appropriate signage installed? (c) Was pedestrian and bicycle access maintained, or were detours clearly defined?

Met Requirements

Q14 – Traffic Control (a) Were flaggers present at all times? (b) Were barriers, cones, and signs in place? (c) Were detours clearly marked?

Met Requirements

Q14 Notes

Traffic flowing throughout ROW during work. Minimal delay for public.

Q15 – Helicopter Use (a) Were helicopter use restrictions implemented adequately? (b) Were helicopter take-off and landing sites within prescribed limits?

N/A

Q16 – Worker Training and Communication: Have all workers on site received the required environmental trainings for the project?

Met Requirements

Q17 – MMCRP Implementation: (a) Were project activities consistent with the approved project as defined in the EIR and subsequent CPUC authorizations? (b) Were MMCRP procedures implemented adequately?

Met Requirements

2017-04-28 AM Inspection Report

SDG&E Sycamore-Peñasquitos 230-kV Transmission Line Project: Daily Inspection Report

Inspection Date	2017-04-28
Start Time	05:02:00
End Time	06:34:00
Monitor Name	Korey Klutz
Organization	The Sanberg Group (Sanberg)
Summary of Construction Activities	All construction activities were completed between approved work hours. Active sites from the previous work night included Arjons Road, Carroll Way and Trade Place.
Summary of Compliance Activities	Traffic control measures were removed from the roadways and traffic flow was normal throughout ROW.
Were any issues encountered?	No

Photo Log

Photo



Caption Driving Range Yard, work complete and yard closed.

Photo Attributes Capture Date/Time: Fri Apr 28 2017 06:14:07 GMT-0700 (PDT)
Coordinates: 32.891059, -117.191871
View Direction: East

Photo



Caption Trade place work site. Traffic flowing and work complete.

Photo Attributes Capture Date/Time: Fri Apr 28 2017 06:08:32 GMT-0700 (PDT)
Coordinates: 32.891033, -117.191929
View Direction: West

Photo



Caption Arjons work site. Traffic flowing and work is complete.

Photo Attributes Capture Date/Time: Fri Apr 28 2017 06:07:38 GMT-0700 (PDT)
Coordinates: 32.891048, -117.191925
View Direction: East

Photo



Caption Carrol Way Excavation Site. Work complete and traffic flowing.

Photo Attributes Capture Date/Time: Fri Apr 28 2017 06:06:16 GMT-0700 (PDT)
 Coordinates: 32.891048, -117.191922
 View Direction: West

Daily Checklist

Q1 – General Avoidance and Minimization: (a) Were the limits of work areas and access roads clearly marked? (b) Were construction activities limited to CPUC-approved work areas?	Met Requirements
Q1 Notes	LEI onsite ensuring compliance
Q2 – Air Quality/GHG: (a) Were dust avoidance and minimization requirements implemented and monitored adequately? (b) Was dust generation below required thresholds? (c) Were equipment and vehicles maintained and operated in a manner to limit emissions? (d) Was organic waste collected and separated from non-organic waste for appropriate composting or recycling, as appropriate?	Met Requirements
Q2 Notes	Streets were clean following nighttime work.
Q3 – Special-Status Plants: Were impact avoidance and minimization requirements for special-status plants implemented adequately (e.g., avoiding sensitive areas)?	N/A
Q4 – Wildlife (Non-Avian): Were impact avoidance and minimization requirements for wildlife implemented adequately (e.g., avoiding sensitive areas, covering excavations, and inspecting equipment/trenches)?	N/A
Q5 – Nesting and Burrowing Birds: (a) Were active nests and occupied burrows identified and monitored during applicable seasons, as required? (b) Were impact avoidance and minimization requirements for any active nests or occupied burrows implemented adequately?	Met Requirements
Q5 Notes	Work was not completed next to any active nest sites.
Q6 – Water Features and Aquatic Habitat: Were water features avoided?	N/A
Q7 – Stormwater, Erosion, and Sediment Control: (a) Were erosion and sediment control BMPs in place and functioning properly? (b) Were inactive or completed work areas stabilized and/or restored adequately?	Met Requirements
Q7 Notes	BMPs were installed throughout work sites
Q8 – Invasive Weed Control: Were procedures to prevent the spread of invasive weeds implemented adequately?	N/A
Q9 – Hazardous Materials and Waste Management: (a) Were hazardous materials stored and labeled properly? (b) Was hazardous material waste disposed of appropriately? (c) Were any spills or leaks addressed adequately? (d) Was solid waste collected and disposed of adequately?	Met Requirements
Q10 – Fire Management: (a) Were fire prevention procedures	Met Requirements

in place? (b) Was firefighting equipment available on site?

Q11 – Cultural, Paleontological, and Tribal Resources: (a) Were cultural, paleontological, and tribal resources monitoring and impact avoidance occurring as required? (b) If potential resources or human remains were inadvertently discovered, were response procedures and protocols implemented as required? Met Requirements

Q11 Notes

Monitors were at site during active construction.

Q12 – Construction Noise: (a) Were noise minimization measures in place, as required? (b) If noise complaints were received, were they documented and addressed, as required? Met Requirements

Q13 – Maintain Access: (a) Was access to driveways (e.g., businesses, schools, residences) maintained as required? (b) Was access to recreational areas maintained and appropriate signage installed? (c) Was pedestrian and bicycle access maintained, or were detours clearly defined? Met Requirements

Q14 – Traffic Control (a) Were flaggers present at all times? (b) Were barriers, cones, and signs in place? (c) Were detours clearly marked? Met Requirements

Q14 Notes

Traffic control was implemented throughout work sites during construction. All control measures were removed when construction was finished.

Q15 – Helicopter Use (a) Were helicopter use restrictions implemented adequately? (b) Were helicopter take-off and landing sites within prescribed limits? N/A

Q16 – Worker Training and Communication: Have all workers on site received the required environmental trainings for the project? Met Requirements

Q17 – MMCRP Implementation: (a) Were project activities consistent with the approved project as defined in the EIR and subsequent CPUC authorizations? (b) Were MMCRP procedures implemented adequately? Met Requirements