

PROJECT MEMORANDUM SYCAMORE-PEÑASQUITOS 230-KV TRANSMISSION LINE PROJECT

Date: May 12, 2017
To: Billie Blanchard, CPUC Project Manager
From: Sheila Hoyer, CPUC Monitoring Supervisor
Subject: Weekly Report #18 – April 30 to May 5, 2017

INTRODUCTION

This report provides a summary of the construction and compliance activities associated with the SDG&E Sycamore-Peñasquitos 230-kV Transmission Line Project for the week of April 30 to May 5, 2017.

A summary of the Notices to Proceed, and Minor Project Refinement, and Temporary Extra Workspace Requests are provided in Tables 1, 2, and 3, respectively. A summary of Non-compliance, Project Memoranda and Incidents is provided in Table 4. Daily Inspection Reports are provided in Appendix A.

CPUC/Panorama Environmental Monitors (EMs): Dave Flietner, Jerry Scott, and Korey Klutz

STAGING YARDS

Summary of Activity:

Stonebridge Staging Yard:

1. Delivering materials and equipment, maintaining BMPs, and swabbing and capping circuit conduit.

Driving Range Staging Yard:

1. Maintaining BMPs, and delivering materials and equipment.

Underground Transmission Line:

1. Construction occurred in Segment 5 along sections 6, 7, 10, 11, 12, 13 and 14 (approximately at stations 66+00 to 230).
2. Saw cutting for trench and vaults, installing vaults and conduit, potholing to locate existing utilities, laying asphalt, maintaining BMPs, and installing storm drain inlet protection.

Environmental Compliance:

1. During this reporting period, all pavement was kept clean. No winds occurred that were higher than 20 mph. All off-road diesel-powered construction equipment used on the Project met a minimum of EPA Tier 3 standards.
2. Monitoring for special-status species and inspections for wildlife was implemented to avoid and minimize impacts to biological resources. Construction activities within the Stonebridge Staging Yard and Driving Range Staging Yard were initiated outside of the nesting season, and construction activities remain ongoing. Daily nest monitoring occurred on May 1-3, 2017 in areas of active construction where nest buffer reduction requests had been approved, and active construction was occurring. Daily nest monitoring included one Anna's hummingbird nest. Monitoring of the nest was discontinued on May 4 as the nest became inactive (not associated or caused by construction activities). During this reporting period on May 3, 2017, a small mouse and an Audobon's cottontail were found within the trenches by the construction crews and the LEI was immediately notified. Both the mouse and Audobon's cottontail were safely captured and relocated offsite on the same night they were discovered. All project equipment arrived clean and free of mud and/or vegetation.
3. During this reporting period, archaeological, paleontological, and Native American monitors were on-site for ground-disturbing activities in areas with moderate to high potential to encounter resources. Archaeological, Native American, and paleontological monitoring of vault excavations and trenching occurred in areas of high potential for paleontologically sensitive deposits and archaeological resources. Potholing activities continued during the week, both by vacuum method and by backhoe. Monitoring by archaeological, Native American and paleontological monitors was reduced for use of the vacuum under the direction of the CPUC-approved Qualified Paleontologist and CPUC-approved archaeologist. Spot checking for potholing by backhoe was recommended by both the Qualified Paleontologist and CPUC-approved archaeologist. The CPUC-approved archaeologist discontinued archaeological and Native American monitoring of vault excavations when the vault excavations reached a depth (greater than 10 feet) where the potential for cultural resources was low. Spot checking by the archaeological and Native American monitor was also recommended by the CPUC-approved Archaeologist for the trench excavations in disturbed soil/fill material where the potential to encounter historical or archaeological resources was low. Cultural monitoring teams will continue spot checking and if the soil composition changes, full-time monitoring may be recommended.
4. On the night of May 3, 2017, transite pipe was discovered during night trenching activities in Segment 5 Section 6 near station 98. Work was stopped in the area and the foreman contacted the ARB Safety Manager to notify him of the situation. The SDG&E Field Contract Administrator (FCAs) and SDG&E Safety Lead were also immediately notified. The transite pipe pieces encountered were wetted down and bagged. The trench was closed until a trained abatement contractor could properly assess the asbestos-containing material (ACM). On May 4, 2017 crews from Argus Environmental and an Industrial Hygienist from Pacific EH&S Services, Inc. surveyed the area where the transite was

discovered, and removed approximately 5-10 square feet of debris. The ACM was in a non-friable state and was bagged up and removed off site for disposal. No other reportable releases and/or spills occurred during this reporting period.

5. Daytime construction activities during this reporting period were confined to Monday through Friday and occurred between 7:00 a.m. and 5:30 p.m. A noise permit was obtained from the City of San Diego for nighttime construction activities. Nighttime construction activities were confined to Sunday through Thursday and occurred between 9:00 p.m. and 5:00 a.m., except on May 1, 2017. Construction crews worked outside of approved construction hours along Carroll Canyon Road from 5:00 am until approximately 7:05 am. This was recorded as a Level 1 Compliance Incident.
6. Project personnel parked their personal vehicles within a designated personal vehicle parking area within the project limits within the Stonebridge Staging Yard. Workers parked within the work limits of the Driving Range Staging Yard or parked on the adjacent public street.
7. No precipitation was recorded in the on-site rain gauges at Driving Range or Stonebridge Staging Yards. The Qualified Storm Water Pollution Prevention Plan Practitioner (QSP) conducted daily visual inspections at the Stonebridge and Driving Range Staging Yards, and along the underground transmission line section on April 30 through May 5, 2017. The QSP also conducted a pre-rain event inspection on May 5 in anticipation for the predicted rain event on May 7. The contractor installed and maintained BMPs along the right-of-way (ROW) in Segment 5. A street sweeper/cleaner was used to clean up excess sediment/dust generated from saw cutting activities. The City of San Diego requested that the BMPs around the storm drains along the trench route be removed to prevent potential flooding and safety concerns on Carroll Road prior to the predicted rain event for May 7, 2017. The contractor removed the BMPs, per the city's request, and prepared the work sites for the predicted rain event, which included additional street/gutter sweeping, drip pan inspections, covering trash receptacles, and covering/securing stockpiles. BMPs were reinstalled prior to resuming work activities on May 8, 2017.
8. All construction and compliance personnel on site during this reporting period completed the Project Safety and Environmental Awareness Program (SEAP). To date, approximately 606 Project personnel have received the required SEAP training, and 493 Project personnel have received the UXO training.
9. One Compliance Level Incident and one Health and Safety Incident were noted during the subject period.
10. A public complaint was received on May 3, 2017 regarding work along Pomerado Road.

Agency Representatives during Construction (other than CPUC EMs): None

CPUC NOTICES TO PROCEED (NTPs)

Table 1 summarizes the CPUC NTP activity for the SDG&E Sycamore-Peñasquitos 230-kV Transmission Line Project to date.

Table 1 CPUC NTPs

NTP #	Date Submitted	Date Issued	Segment #	Description
1	12/05/16	12/29/16	N/A	Mobilize and begin operations at the construction staging yards.
2	01/23/17	02/07/17	Segment B	Construct the underground portion of the Project from Sycamore Substation to Structure P03, and from Structure P05 to Structure CC MM CP.
3	02/03/17	02/27/17	Segment A Segment C	1. Overhead construction from Sycamore Substation to Structure P06 2. Overhead construction from Structure CC MM CP to the Peñasquitos Substation 3. Deepwell AC mitigation installation 4. Construction activities at Sycamore Canyon and Peñasquitos Substations

MINOR PROJECT REFINEMENT & TEMPORARY EXTRA WORKSPACE REQUESTS

Tables 2 and 3 summarize the Minor Project Refinements (MPRs) and Temporary Extra Workspace (TEWS) Requests have been submitted to date.

Table 2 Minor Project Refinement (MPR) Requests

MPR Request	Date Submitted	Date Issued	Segment #	Description
#1	12/06/16	1/11/17	Segment A	Underground 230-kV getaway from Sycamore Substation to Structure P03.
#2	01/17/17	01/24/17	Segment B	Realignment of the 230-kV underground transmission line from Miramar Road north on Black Mountain Road and west on Activity Road.
#3	03/06/17	03/08/17	Segment A	Provides temporary power to the SDG&E trailer at the Stonebridge Staging Yard through the existing power box located outside of the existing Project boundary.
#4	04/18/17	04/20/17	Segment B	Modifies the approved 2.61-acre Vulcan Mine Yard location approximately 884 feet to the west to an approximately 1.71-acre paved area.

Table 3 Temporary Extra Workspace (TEWS) Requests

TEWS Request	Date Submitted	Date Issued	Segment #	Description
None to date				

NON-COMPLIANCES, PROJECT MEMORANDA & INCIDENTS

A Level 1 Compliance Incident occurred on May 1, 2017 at the end of the night shift when construction crews worked outside of approved construction hours along Carroll Canyon Road at vault Station 101 + 00 from 5:00 am until approximately 7:05 am. Authorization from the City of San Diego’s Resident Engineer was not received to work past 5:00 am. SDG&E’s construction contractor notified the City of San Diego making them aware of the Traffic Control and Noise Permit violations. The construction contractor addressed approved work hours during the following tailboards and incorporated contingency into their nightly work schedule. SDG&E provided a preliminary notification of the non-compliance to the CPUC Project Manager Billie Blanchard and the CPUC Monitoring Manager Jeff Thomas via email on May 1, 2017, and provided a follow-up written notification on May 2, 2017.

On May 3, 2017, a traffic incident occurred when a non-construction-related semi-trailer truck with the label “Swift Trucking” was entering the Snapple/7-Up facility located at 7598 Trade Street just north of Station 177 + 00. Construction personnel removed the traffic control cones in the area so that the semi-trailer truck could turn left into the facility from Trade Street. In the process of turning left, the vehicle struck the bollards protecting an SDG&E electrical transformer located on the side of the driveway. The vehicle and bollards were damaged as part of the incident. A traffic control flagger witnessed the accident and immediately notified the SDG&E and ARB safety team. Upon notification, the SDG&E and ARB Safety Team notified the Snapple Plant/7-Up Plant Manager of the accident and the damage caused by the vehicle. The ARB Safety Manager also notified the San Diego Police Department (SDPD). SDPD Officer A. Ruiz arrived at the scene of the accident and completed a police report. No injuries or fatalities were recorded, and there is no indication that this accident was associated in any way with the traffic control set-up or implementation. Written notification of the incident was provided to the CPUC on May 4, 2017. No other health and safety incidents were observed or reported during this period.

Table 4 Non-Compliances, Project Memoranda, and Other Incidents

Type	Date	Location	Description
Level 1	04/12/2017	Segment B	Potable water was used in a street sweeper
Memoranda	04/19/2017	Segment B	Traffic incident at Driving Range Staging Yard
Level 1	04/24/2017	Segment B	Presence of trash along the project alignment
Level 1	05/01/2017	Segment B	Working outside of City-approved hours
Memoranda	05/03/2017	Segment B	Traffic incident at Snapple/7-Up Plant

ATTACHMENT A INSPECTION REPORTS

2017-04-30 PM Inspection Report

SDG&E Sycamore-Peñasquitos 230-kV Transmission Line Project: Daily Inspection Report

Inspection Date	2017-04-30
Start Time	20:00:00
End Time	23:26:00
Monitor Name	Dave Flietner
Organization	The Sanberg Group (Sanberg)
Summary of Construction Activities	Crews are placing conduit on Trade St., and retrenching and digging vault on Carroll Rd.
Summary of Compliance Activities	Team of 3 monitors monitoring trenching and paleontologist monitoring vault work (both Carroll St),
Were any issues encountered?	No

Photo Log

Photo



Caption Placing conduit in trench (Trade St).

Photo Attributes Capture Date/Time: Sun Apr 30 2017 23:00:48 GMT-0700 (PDT)
Coordinates: 32.8887, -117.163817
View Direction: West

Photo



Caption Removing asphalt (Carroll Road).

Photo Attributes Capture Date/Time: Sun Apr 30 2017 22:39:04 GMT-0700 (PDT)
Coordinates: 32.888917, -117.180209
View Direction: Southeast

Photo



Caption Workers connected to anti-fall device near vault.

Photo Attributes Capture Date/Time: Sun Apr 30 2017 22:33:52 GMT-0700 (PDT)
Coordinates: 32.887474, -117.177613
View Direction: Northwest

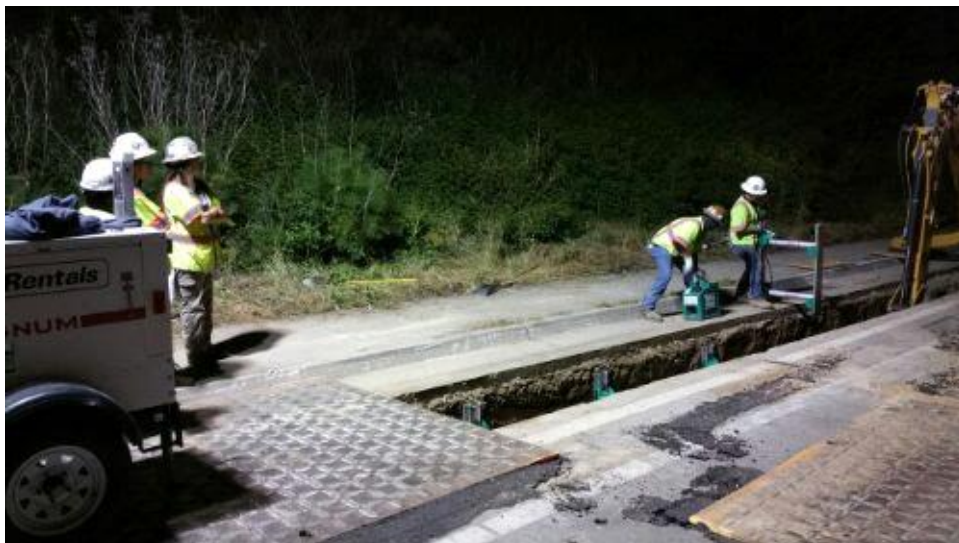
Photo



Caption Digging vault (Carroll Rd), paleo monitor present.

Photo Attributes Capture Date/Time: Sun Apr 30 2017 22:26:13 GMT-0700 (PDT)
Coordinates: 32.887622, -117.177606
View Direction: West

Photo



Caption Trenching (Carroll Rd).

Photo Attributes Capture Date/Time: Sun Apr 30 2017 22:02:45 GMT-0700 (PDT)

Photo



Caption Approach to Carroll Road site from west.

Photo Attributes Capture Date/Time: Sun Apr 30 2017 21:49:39 GMT-0700 (PDT)
Coordinates: 32.889736, -117.183226
View Direction: East

Photo



Caption Cutting trench plate with proper fire safety measures.

Photo Attributes Capture Date/Time: Sun Apr 30 2017 21:17:35 GMT-0700 (PDT)
Coordinates: 32.888639, -117.165005
View Direction: North

Photo



Caption Traffic controls in place and traffic flowing smoothly (Trade St).
 Photo Attributes Capture Date/Time: Sun Apr 30 2017 20:55:49 GMT-0700 (PDT)
 Coordinates: 32.888587, -117.163259
 View Direction: West

Daily Checklist

Q1 – General Avoidance and Minimization: (a) Were the limits of work areas and access roads clearly marked? (b) Were construction activities limited to CPUC-approved work areas?	Met Requirements
Q2 – Air Quality/GHG: (a) Were dust avoidance and minimization requirements implemented and monitored adequately? (b) Was dust generation below required thresholds? (c) Were equipment and vehicles maintained and operated in a manner to limit emissions? (d) Was organic waste collected and separated from non-organic waste for appropriate composting or recycling, as appropriate?	Met Requirements
Q2 Notes	Workers with brooms were quickly sweeping dust into trench (Trade St.).
Q3 – Special-Status Plants: Were impact avoidance and minimization requirements for special-status plants implemented adequately (e.g., avoiding sensitive areas)?	N/A
Q4 – Wildlife (Non-Avian): Were impact avoidance and minimization requirements for wildlife implemented adequately (e.g., avoiding sensitive areas, covering excavations, and inspecting equipment/trenches)?	N/A
Q5 – Nesting and Burrowing Birds: (a) Were active nests and occupied burrows identified and monitored during applicable seasons, as required? (b) Were impact avoidance and minimization requirements for any active nests or occupied burrows implemented adequately?	N/A
Q5 Notes	No nests recorded near these sites.
Q6 – Water Features and Aquatic Habitat: Were water features avoided?	N/A
Q7 – Stormwater, Erosion, and Sediment Control: (a) Were erosion and sediment control BMPs in place and functioning properly? (b) Were inactive or completed work areas stabilized and/or restored adequately?	Met Requirements
Q7 Notes	BMPs in place.
Q8 – Invasive Weed Control: Were procedures to prevent the spread of invasive weeds implemented adequately?	N/A
Q9 – Hazardous Materials and Waste Management: (a) Were hazardous materials stored and labeled properly? (b) Was hazardous material waste disposed of appropriately? (c) Were any spills or leaks addressed adequately? (d) Was solid waste collected and disposed of adequately?	Met Requirements
Q10 – Fire Management: (a) Were fire prevention procedures in place? (b) Was firefighting equipment available on site?	Met Requirements
Q11 – Cultural, Paleontological, and Tribal Resources: (a) Were cultural, paleontological, and tribal resources monitoring and impact avoidance occurring as required? (b) If potential resources or human remains were inadvertently discovered, were response procedures and protocols implemented as required?	Met Requirements
Q11 Notes	Monitors present where needed.
Q12 – Construction Noise: (a) Were noise minimization measures in place, as required? (b) If noise complaints were received, were they documented and addressed, as required?	Met Requirements
Q13 – Maintain Access: (a) Was access to driveways (e.g., businesses, schools, residences) maintained as required? (b) Was access to recreational areas maintained and appropriate signage installed? (c) Was pedestrian and bicycle access maintained, or were detours clearly defined?	Met Requirements
Q14 – Traffic Control (a) Were flaggers present at all times? (b) Were barriers, cones, and signs in place? (c) Were detours clearly marked?	Met Requirements
Q15 – Helicopter Use (a) Were helicopter use restrictions implemented adequately? (b) Were helicopter take-off and landing sites within prescribed limits?	N/A
Q16 – Worker Training and Communication: Have all workers on site received the required environmental trainings for the project?	Met Requirements
Q17 – MMCRP Implementation: (a) Were project activities consistent with the approved project as defined in the EIR and subsequent CPUC authorizations? (b) Were MMCRP	Met Requirements

procedures implemented adequately?

2017-05-01 AM Inspection Report

SDG&E Sycamore-Peñasquitos 230-kV Transmission Line Project: Daily Inspection Report

Inspection Date	2017-05-01
Start Time	06:36:00
End Time	07:21:00
Monitor Name	Dave Flietner
Organization	The Sanberg Group (Sanberg)
Summary of Construction Activities	Workers were removing traffic cones at Carroll Rd site. Per LEI, a problem with shoring required work to continue longer than anticipated, resulting in cones still in place until 7 a.m.
Summary of Compliance Activities	LEI was present at Carroll Rd.
Were any issues encountered?	No

Photo Log

Photo



Caption Trash placed in trash can (Carroll Rd.).

Photo Attributes Capture Date/Time: Mon May 01 2017 07:12:54 GMT-0700 (PDT)
Coordinates: 32.889009, -117.180295
View Direction: North

Photo



Caption Drip container in place under equipment.

Photo Attributes Capture Date/Time: Mon May 01 2017 07:11:30 GMT-0700 (PDT)
Coordinates: 32.88899, -117.180308
View Direction: South

Photo



Caption Minor dust generated by vehicular traffic.

Photo Attributes Capture Date/Time: Mon May 01 2017 07:04:36 GMT-0700 (PDT)
Coordinates: 32.887676, -117.17861
View Direction: East

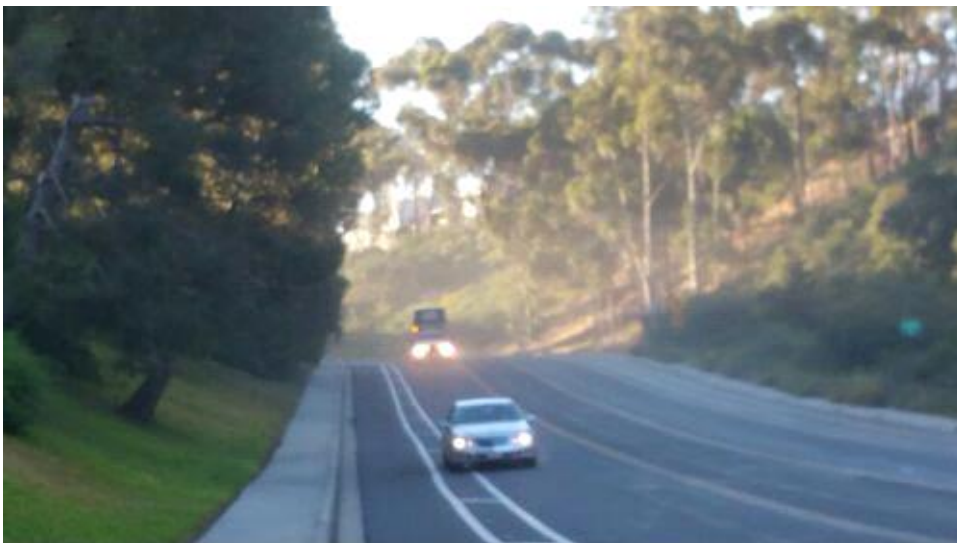
Photo



Caption Dust in air at Carroll Rd.

Photo Attributes Capture Date/Time: Mon May 01 2017 07:02:30 GMT-0700 (PDT)
Coordinates: 32.887899, -117.178889
View Direction: East

Photo



Caption Picking up traffic cones.

Photo Attributes Capture Date/Time: Mon May 01 2017 06:58:04 GMT-0700 (PDT)

Photo



Caption Traffic control at Carroll Rd. East end.

Photo Attributes Capture Date/Time: Mon May 01 2017 06:52:46 GMT-0700 (PDT)
Coordinates: 32.887514, -117.175986
View Direction: East

Photo



Caption Trade St. site from west.

Photo Attributes Capture Date/Time: Mon May 01 2017 06:44:34 GMT-0700 (PDT)
Coordinates: 32.888968, -117.165437
View Direction: East

Photo



Caption Trade St. site from east.
 Photo Attributes Capture Date/Time: Mon May 01 2017 06:39:34 GMT-0700 (PDT)
 Coordinates: 32.88878, -117.161598
 View Direction: West

Daily Checklist

Q1 – General Avoidance and Minimization: (a) Were the limits of work areas and access roads clearly marked? (b) Were construction activities limited to CPUC-approved work areas?	Met Requirements
Q2 – Air Quality/GHG: (a) Were dust avoidance and minimization requirements implemented and monitored adequately? (b) Was dust generation below required thresholds? (c) Were equipment and vehicles maintained and operated in a manner to limit emissions? (d) Was organic waste collected and separated from non-organic waste for appropriate composting or recycling, as appropriate?	Met Requirements
Q2 Notes	Vehicles travelling on Carroll Rd generated dust and a visible pall was over the area. The dust levels were well within guidelines, however. LEI was waiting for street sweeper to arrive.
Q3 – Special-Status Plants: Were impact avoidance and minimization requirements for special-status plants implemented adequately (e.g., avoiding sensitive areas)?	N/A
Q4 – Wildlife (Non-Avian): Were impact avoidance and minimization requirements for wildlife implemented adequately (e.g., avoiding sensitive areas, covering excavations, and inspecting equipment/trenches)?	N/A
Q5 – Nesting and Burrowing Birds: (a) Were active nests and occupied burrows identified and monitored during applicable seasons, as required? (b) Were impact avoidance and minimization requirements for any active nests or occupied burrows implemented adequately?	N/A
Q6 – Water Features and Aquatic Habitat: Were water features avoided?	N/A
Q7 – Stormwater, Erosion, and Sediment Control: (a) Were erosion and sediment control BMPs in place and functioning properly? (b) Were inactive or completed work areas stabilized and/or restored adequately?	Met Requirements
Q8 – Invasive Weed Control: Were procedures to prevent the spread of invasive weeds implemented adequately?	N/A
Q9 – Hazardous Materials and Waste Management: (a) Were hazardous materials stored and labeled properly? (b) Was hazardous material waste disposed of appropriately? (c) Were any spills or leaks addressed adequately? (d) Was solid waste collected and disposed of adequately?	Met Requirements
Q10 – Fire Management: (a) Were fire prevention procedures in place? (b) Was firefighting equipment available on site?	N/A
Q11 – Cultural, Paleontological, and Tribal Resources: (a) Were cultural, paleontological, and tribal resources monitoring and impact avoidance occurring as required? (b) If potential resources or human remains were inadvertently discovered, were response procedures and protocols implemented as required?	Met Requirements
Q12 – Construction Noise: (a) Were noise minimization measures in place, as required? (b) If noise complaints were received, were they documented and addressed, as required?	Met Requirements
Q13 – Maintain Access: (a) Was access to driveways (e.g., businesses, schools, residences) maintained as required? (b) Was access to recreational areas maintained and appropriate signage installed? (c) Was pedestrian and bicycle access maintained, or were detours clearly defined?	Met Requirements
Q14 – Traffic Control (a) Were flaggers present at all times? (b) Were barriers, cones, and signs in place? (c) Were detours clearly marked?	Met Requirements
Q14 Notes	Flaggers were present until cones were removed.
Q15 – Helicopter Use (a) Were helicopter use restrictions implemented adequately? (b) Were helicopter take-off and landing sites within prescribed limits?	N/A
Q16 – Worker Training and Communication: Have all workers on site received the required environmental trainings for the project?	Met Requirements
Q17 – MMCRP Implementation: (a) Were project activities consistent with the approved project as defined in the EIR and subsequent CPUC authorizations? (b) Were MMCRP procedures implemented adequately?	Met Requirements

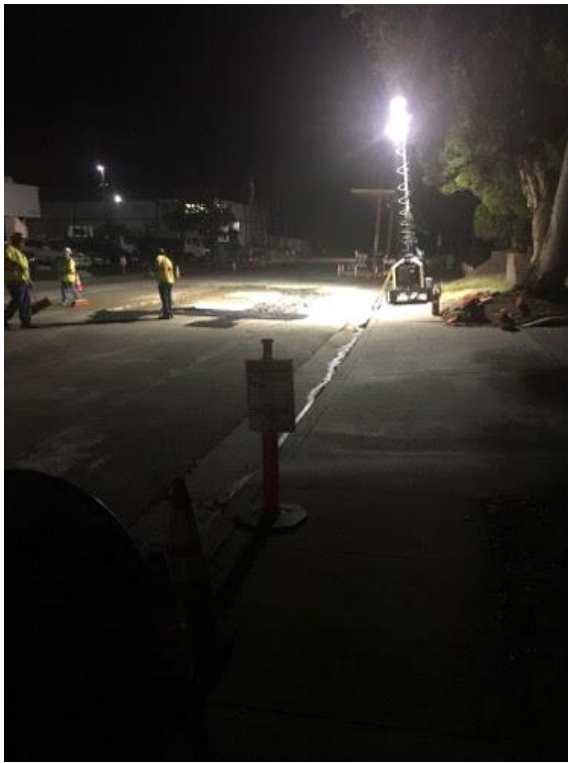
2017-05-01 PM Inspection Report

SDG&E Sycamore-Peñasquitos 230-kV Transmission Line Project: Daily Inspection Report

Inspection Date	2017-05-01
Start Time	19:45:00
End Time	00:04:00
Monitor Name	Korey Klutz
Organization	The Sanberg Group (Sanberg)
Summary of Construction Activities	Active construction sites along Trade Place (backhole potholing), Arjons (vault backfilling) and Carrol Way (trenching)
Summary of Compliance Activities	Monitors onsite at active construction site on Trade and Carrol away. No monitors required for backholing along Arjons.
Were any issues encountered?	No

Photo Log

Photo



Caption Arjons vault backfilling

Photo Attributes Capture Date/Time: Mon May 01 2017 23:52:29 GMT-0700 (PDT)
Coordinates: 32.887975, -117.158894
View Direction: West

Photo



Caption Carrol Way crane

Photo Attributes Capture Date/Time: Mon May 01 2017 23:29:03 GMT-0700 (PDT)
Coordinates: 32.887975, -117.158894
View Direction: South

Photo



Caption Carrol Way Trench Site

Photo Attributes Capture Date/Time: Mon May 01 2017 23:19:03 GMT-0700 (PDT)
Coordinates: 32.887975, -117.158894
View Direction: South

Photo



Caption Trade place work site

Photo Attributes Capture Date/Time: Mon May 01 2017 22:49:54 GMT-0700 (PDT)
Coordinates: 32.887975, -117.158894
View Direction: West

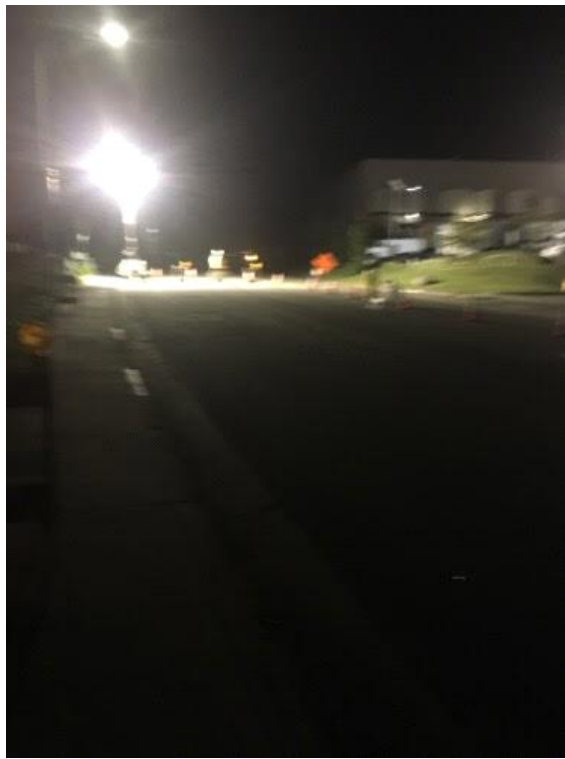
Photo



Caption Vehicle within ROW with fire tools

Photo Attributes Capture Date/Time: Mon May 01 2017 22:47:00 GMT-0700 (PDT)
Coordinates: 32.887975, -117.158894
View Direction: Southeast

Photo



Caption Traffic control Trade Place and Carrol

Photo Attributes Capture Date/Time: Mon May 01 2017 22:42:27 GMT-0700 (PDT)
 Coordinates: 32.887975, -117.158894
 View Direction: East

Daily Checklist

Q1 – General Avoidance and Minimization: (a) Were the limits of work areas and access roads clearly marked? (b) Were construction activities limited to CPUC-approved work areas?	Met Requirements
Q1 Notes	LEI and monitors onsite ensuring compliance
Q2 – Air Quality/GHG: (a) Were dust avoidance and minimization requirements implemented and monitored adequately? (b) Was dust generation below required thresholds? (c) Were equipment and vehicles maintained and operated in a manner to limit emissions? (d) Was organic waste collected and separated from non-organic waste for appropriate composting or recycling, as appropriate?	Met Requirements
Q3 – Special-Status Plants: Were impact avoidance and minimization requirements for special-status plants implemented adequately (e.g., avoiding sensitive areas)?	N/A
Q4 – Wildlife (Non-Avian): Were impact avoidance and minimization requirements for wildlife implemented adequately (e.g., avoiding sensitive areas, covering excavations, and inspecting equipment/trenches)?	Met Requirements
Q4 Notes	
Q5 – Nesting and Burrowing Birds: (a) Were active nests and occupied burrows identified and monitored during applicable seasons, as required? (b) Were impact avoidance and minimization requirements for any active nests or occupied burrows implemented adequately?	N/A
Q5 Notes	Active nest not within vicinity of work sites
Q6 – Water Features and Aquatic Habitat: Were water features avoided?	N/A
Q7 – Stormwater, Erosion, and Sediment Control: (a) Were erosion and sediment control BMPs in place and functioning properly? (b) Were inactive or completed work areas stabilized and/or restored adequately?	Met Requirements
Q7 Notes	BMPs installed throughout work site ROW...FYI potential storm system forecasted for weekend.
Q8 – Invasive Weed Control: Were procedures to prevent the spread of invasive weeds implemented adequately?	N/A
Q9 – Hazardous Materials and Waste Management: (a) Were hazardous materials stored and labeled properly? (b) Was hazardous material waste disposed of appropriately? (c) Were	Met Requirements

any spills or leaks addressed adequately? (d) Was solid waste collected and disposed of adequately?

Q10 – Fire Management: (a) Were fire prevention procedures in place? (b) Was firefighting equipment available on site? Met Requirements

Q10 Notes

Fire tools observed as required at job sites and on vehicles.

Q11 – Cultural, Paleontological, and Tribal Resources: (a) Were cultural, paleontological, and tribal resources monitoring and impact avoidance occurring as required? (b) If potential resources or human remains were inadvertently discovered, were response procedures and protocols implemented as required? Met Requirements

Q12 – Construction Noise: (a) Were noise minimization measures in place, as required? (b) If noise complaints were received, were they documented and addressed, as required? Met Requirements

Q13 – Maintain Access: (a) Was access to driveways (e.g., businesses, schools, residences) maintained as required? (b) Was access to recreational areas maintained and appropriate signage installed? (c) Was pedestrian and bicycle access maintained, or were detours clearly defined? Met Requirements

Q14 – Traffic Control (a) Were flaggers present at all times? (b) Were barriers, cones, and signs in place? (c) Were detours clearly marked? Met Requirements

Q15 – Helicopter Use (a) Were helicopter use restrictions implemented adequately? (b) Were helicopter take-off and landing sites within prescribed limits? N/A

Q16 – Worker Training and Communication: Have all workers on site received the required environmental trainings for the project? Met Requirements

Q17 – MMCRP Implementation: (a) Were project activities consistent with the approved project as defined in the EIR and subsequent CPUC authorizations? (b) Were MMCRP procedures implemented adequately? Met Requirements

2017-05-04 PM Inspection Report

SDG&E Sycamore-Peñasquitos 230-kV Transmission Line Project: Daily Inspection Report

Inspection Date	2017-05-04
Start Time	19:30:00
End Time	23:55:00
Monitor Name	Korey Klutz
Organization	The Sanberg Group (Sanberg)
Summary of Construction Activities	Active work sites along Trade Place and Carroll Road. Trade sites included potholing, excavation, pipe work and road resurfacing. Carrol sites included trenching, pipe work, and asbestos removal.
Summary of Compliance Activities	LEI, paleo, cultural and Native American monitors onsite. Asbestos hazardous materials removal crew onsite in order to clear work site of an old pipe.
Were any issues encountered?	No

Photo Log

Photo



Caption Carrol traffic control

Photo Attributes Capture Date/Time: Thu May 04 2017 22:54:16 GMT-0700 (PDT)
Coordinates: 32.892118, -117.185123
View Direction: North

Photo



Caption Vault on Trade Place

Photo Attributes Capture Date/Time: Thu May 04 2017 22:35:47 GMT-0700 (PDT)
Coordinates: 32.889242, -117.154932
View Direction: East

Photo



Caption Ballard collision site from 5/3/17

Photo Attributes Capture Date/Time: Thu May 04 2017 22:24:50 GMT-0700 (PDT)
Coordinates: 32.889206, -117.158785
View Direction: West

Photo



Caption Trash adjacent to work site

Photo Attributes Capture Date/Time: Thu May 04 2017 22:21:09 GMT-0700 (PDT)
Coordinates: 32.888786, -117.160729
View Direction: West

Photo



Caption Work site debris in gutters

Photo Attributes Capture Date/Time: Thu May 04 2017 22:20:31 GMT-0700 (PDT)
Coordinates: 32.888793, -117.160686
View Direction: South

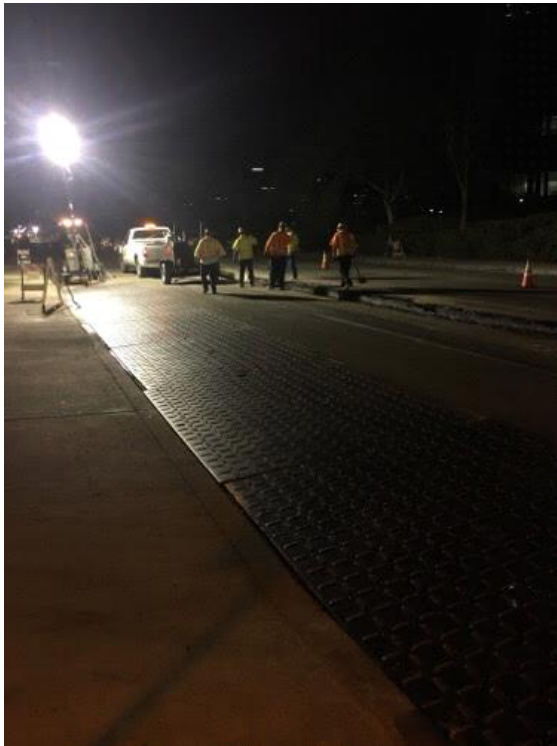
Photo



Caption Traffic control on Trade Place

Photo Attributes Capture Date/Time: Thu May 04 2017 22:05:32 GMT-0700 (PDT)
Coordinates: 32.888771, -117.165345
View Direction: West

Photo



Caption Road resurfacing

Photo Attributes Capture Date/Time: Thu May 04 2017 22:04:49 GMT-0700 (PDT)
Coordinates: 32.888766, -117.164999
View Direction: East

Photo



Caption Potholing on Trade Place

Photo Attributes Capture Date/Time: Thu May 04 2017 21:54:17 GMT-0700 (PDT)
Coordinates: 32.888853, -117.161543
View Direction: West

Photo



Caption Excavation on Trade Place

Photo Attributes Capture Date/Time: Thu May 04 2017 21:53:46 GMT-0700 (PDT)
Coordinates: 32.888853, -117.161543
View Direction: Southwest

Daily Checklist

Q1 – General Avoidance and Minimization: (a) Were the limits of work areas and access roads clearly marked? (b) Were construction activities limited to CPUC-approved work areas? Met Requirements

Q1 Notes LEI onsite, monitor enforcing compliance and work sites were marked.

Q2 – Air Quality/GHG: (a) Were dust avoidance and minimization requirements implemented and monitored adequately? (b) Was dust generation below required thresholds? (c) Were equipment and vehicles maintained and operated in a manner to limit emissions? (d) Was organic waste collected and separated from non-organic waste for appropriate composting or recycling, as appropriate?	Met Requirements
Q3 – Special-Status Plants: Were impact avoidance and minimization requirements for special-status plants implemented adequately (e.g., avoiding sensitive areas)?	N/A
Q4 – Wildlife (Non-Avian): Were impact avoidance and minimization requirements for wildlife implemented adequately (e.g., avoiding sensitive areas, covering excavations, and inspecting equipment/trenches)?	Met Requirements
Q4 Notes	It was noted in the tailboard that a mouse and a rabbit were removed from trenches the previous night. LEI removed these animals.
Q5 – Nesting and Burrowing Birds: (a) Were active nests and occupied burrows identified and monitored during applicable seasons, as required? (b) Were impact avoidance and minimization requirements for any active nests or occupied burrows implemented adequately?	N/A
Q5 Notes	No active nests near work sites.
Q6 – Water Features and Aquatic Habitat: Were water features avoided?	N/A
Q7 – Stormwater, Erosion, and Sediment Control: (a) Were erosion and sediment control BMPs in place and functioning properly? (b) Were inactive or completed work areas stabilized and/or restored adequately?	Met Requirements
Q7 Notes	BMPs installed along ROW. 5/5/17 visit will focus on site prep for upcoming rain event.
Q8 – Invasive Weed Control: Were procedures to prevent the spread of invasive weeds implemented adequately?	N/A
Q9 – Hazardous Materials and Waste Management: (a) Were hazardous materials stored and labeled properly? (b) Was hazardous material waste disposed of appropriately? (c) Were any spills or leaks addressed adequately? (d) Was solid waste collected and disposed of adequately?	Met Requirements
Q9 Notes	Asbestos was found during work on 5/3. Clean up/remediation crew onsite to remove tonight.
Q10 – Fire Management: (a) Were fire prevention procedures in place? (b) Was firefighting equipment available on site?	Met Requirements
Q11 – Cultural, Paleontological, and Tribal Resources: (a) Were cultural, paleontological, and tribal resources monitoring and impact avoidance occurring as required? (b) If potential resources or human remains were inadvertently discovered, were response procedures and protocols implemented as required?	Met Requirements
Q11 Notes	Monitors onsite at active trenching locations
Q12 – Construction Noise: (a) Were noise minimization measures in place, as required? (b) If noise complaints were received, were they documented and addressed, as required?	Met Requirements
Q13 – Maintain Access: (a) Was access to driveways (e.g., businesses, schools, residences) maintained as required? (b) Was access to recreational areas maintained and appropriate signage installed? (c) Was pedestrian and bicycle access maintained, or were detours clearly defined?	Met Requirements
Q14 – Traffic Control (a) Were flaggers present at all times? (b) Were barriers, cones, and signs in place? (c) Were detours clearly marked?	Met Requirements
Q15 – Helicopter Use (a) Were helicopter use restrictions implemented adequately? (b) Were helicopter take-off and landing sites within prescribed limits?	N/A
Q16 – Worker Training and Communication: Have all workers on site received the required environmental trainings for the project?	Met Requirements
Q17 – MMCRP Implementation: (a) Were project activities consistent with the approved project as defined in the EIR and subsequent CPUC authorizations? (b) Were MMCRP procedures implemented adequately?	Met Requirements

2017-05-05 AM Inspection Report

SDG&E Sycamore-Peñasquitos 230-kV Transmission Line Project: Daily Inspection Report

Inspection Date	2017-05-05
Start Time	09:22:00
End Time	11:57:00
Monitor Name	Korey Klutz
Organization	The Sanberg Group (Sanberg)
Summary of Construction Activities	Nighttime work was complete and equipment was properly stored. A BMP crew was onsite actively cleaning the road of loose debris and removing BMPs from storm drains. According to the LEI, the removal of BMPs was at the direction of the City of SD.
Summary of Compliance Activities	No noncompliance issues observed. Trash observed from the prior night's work had been properly cleaned.
Were any issues encountered?	No

Photo Log

Photo



Caption Crew cleaning road on Trade Street.

Photo Attributes Capture Date/Time: Fri May 05 2017 11:03:46 GMT-0700 (PDT)
Coordinates: 32.888791, -117.161608
View Direction: East

Photo



Caption Trade Street

Photo Attributes Capture Date/Time: Fri May 05 2017 11:01:50 GMT-0700 (PDT)
Coordinates: 32.888804, -117.162981
View Direction: West

Photo



Caption Carrol Rd, note loose dirt and gravel

Photo Attributes Capture Date/Time: Fri May 05 2017 10:53:03 GMT-0700 (PDT)
Coordinates: 32.888613, -117.180285
View Direction: North

Photo



Caption Carrol Rd

Photo Attributes Capture Date/Time: Fri May 05 2017 10:50:11 GMT-0700 (PDT)
Coordinates: 32.889179, -117.182213
View Direction: South

Photo



Caption Storm drain without water quality protection measures.

Photo Attributes Capture Date/Time: Fri May 05 2017 10:45:42 GMT-0700 (PDT)
Coordinates: 32.890713, -117.184395
View Direction: South

Photo



Caption Brown Deer Rd equipment storage area.

Photo Attributes Capture Date/Time: Fri May 05 2017 10:22:45 GMT-0700 (PDT)
 Coordinates: 32.888970, -117.180103
 View Direction: East

Daily Checklist	
Q1 – General Avoidance and Minimization: (a) Were the limits of work areas and access roads clearly marked? (b) Were construction activities limited to CPUC-approved work areas?	Met Requirements
Q2 – Air Quality/GHG: (a) Were dust avoidance and minimization requirements implemented and monitored adequately? (b) Was dust generation below required thresholds? (c) Were equipment and vehicles maintained and operated in a manner to limit emissions? (d) Was organic waste collected and separated from non-organic waste for appropriate composting or recycling, as appropriate?	Met Requirements
Q3 – Special-Status Plants: Were impact avoidance and minimization requirements for special-status plants implemented adequately (e.g., avoiding sensitive areas)?	N/A
Q4 – Wildlife (Non-Avian): Were impact avoidance and minimization requirements for wildlife implemented adequately (e.g., avoiding sensitive areas, covering excavations, and inspecting equipment/trenches)?	N/A
Q5 – Nesting and Burrowing Birds: (a) Were active nests and occupied burrows identified and monitored during applicable seasons, as required? (b) Were impact avoidance and minimization requirements for any active nests or occupied burrows implemented adequately?	N/A
Q6 – Water Features and Aquatic Habitat: Were water features avoided?	N/A
Q7 – Stormwater, Erosion, and Sediment Control: (a) Were erosion and sediment control BMPs in place and functioning properly? (b) Were inactive or completed work areas stabilized and/or restored adequately?	Met Requirements
Q7 Notes	BMPS being removed prior to rain event at the request of the City. This was requested due to potential flooding issues.
Q8 – Invasive Weed Control: Were procedures to prevent the spread of invasive weeds implemented adequately?	N/A
Q9 – Hazardous Materials and Waste Management: (a) Were hazardous materials stored and labeled properly? (b) Was hazardous material waste disposed of appropriately? (c) Were any spills or leaks addressed adequately? (d) Was solid waste collected and disposed of adequately?	Met Requirements
Q10 – Fire Management: (a) Were fire prevention procedures in place? (b) Was firefighting equipment available on site?	Met Requirements

Q11 – Cultural, Paleontological, and Tribal Resources: (a) Were cultural, paleontological, and tribal resources monitoring and impact avoidance occurring as required? (b) If potential resources or human remains were inadvertently discovered, were response procedures and protocols implemented as required?	Met Requirements
Q12 – Construction Noise: (a) Were noise minimization measures in place, as required? (b) If noise complaints were received, were they documented and addressed, as required?	Met Requirements
Q13 – Maintain Access: (a) Was access to driveways (e.g., businesses, schools, residences) maintained as required? (b) Was access to recreational areas maintained and appropriate signage installed? (c) Was pedestrian and bicycle access maintained, or were detours clearly defined?	Met Requirements
Q14 – Traffic Control (a) Were flaggers present at all times? (b) Were barriers, cones, and signs in place? (c) Were detours clearly marked?	Met Requirements
Q14 Notes	Traffic was flowing normally throughout ROW.
Q15 – Helicopter Use (a) Were helicopter use restrictions implemented adequately? (b) Were helicopter take-off and landing sites within prescribed limits?	N/A
Q16 – Worker Training and Communication: Have all workers on site received the required environmental trainings for the project?	Met Requirements
Q17 – MMCRP Implementation: (a) Were project activities consistent with the approved project as defined in the EIR and subsequent CPUC authorizations? (b) Were MMCRP procedures implemented adequately?	Met Requirements