

PROJECT MEMORANDUM SYCAMORE-PEÑASQUITOS 230-KV TRANSMISSION LINE PROJECT

Date: May 19, 2017
To: Billie Blanchard, CPUC Project Manager
From: Sheila Hoyer, CPUC Monitoring Supervisor
Subject: Weekly Report #19 – May 7 to May 12, 2017

INTRODUCTION

This report provides a summary of the construction and compliance activities associated with the SDG&E Sycamore-Peñasquitos 230-kV Transmission Line Project for the week of May 7 to May 12, 2017.

A summary of the Notices to Proceed, and Minor Project Refinement, and Temporary Extra Workspace Requests are provided in Tables 1, 2, and 3, respectively. A summary of Non-compliance, Project Memoranda and Incidents is provided in Table 4. Daily Inspection Reports are provided in Appendix A.

CPUC/Panorama Environmental Monitors (EMs): Jerry Scott and Korey Klutz

STAGING YARDS

Summary of Activity:

Stonebridge Staging Yard:

1. Delivering materials and equipment, maintaining BMPs, swabbing and capping circuit conduit, and installing IT equipment at the SDG&E construction trailer.

Driving Range Staging Yard:

1. Maintaining BMPs, and delivering materials and equipment.

Underground Transmission Line:

1. Construction occurred in Segment 5 along sections 6, 7, 8, 10, 11, 12, and 13 (approximately at stations 66+00 to 230).
2. Saw cutting for trench and vaults, installing vaults and conduit, potholing to locate existing utilities, laying asphalt, maintaining BMPs, and installing storm drain inlet protection.

Environmental Compliance:

1. During this reporting period, all pavement was kept clean. No winds occurred that were higher than 20 mph. All off-road diesel-powered construction equipment used on the Project met a minimum of EPA Tier 3 standards.
2. Monitoring for special-status species and inspections for wildlife was implemented to avoid and minimize impacts to biological resources. Construction activities within the Stonebridge Staging Yard and Driving Range Staging Yard were initiated outside of the nesting season, and construction activities remain ongoing. No daily nest monitoring occurred on during this reporting period. All project equipment arrived clean and free of mud and/or vegetation.
3. During this reporting period, archaeological, paleontological, and Native American monitors were on-site for ground-disturbing activities in areas with moderate to high potential to encounter resources. Archaeological, Native American, and paleontological monitoring of vault excavations and trenching occurred in areas of high potential for paleontologically sensitive deposits and archaeological resources. Potholing activities continued during the week, both by vacuum method and by backhoe. Monitoring by archaeological, Native American and paleontological monitors was reduced for use of the vacuum under the direction of the CPUC-approved Qualified Paleontologist and CPUC-approved archaeologist. Spot checking for potholing by backhoe was recommended by both the Qualified Paleontologist and CPUC-approved archaeologist. The CPUC-approved archaeologist discontinued archaeological and Native American monitoring of vault excavations when the vault excavations reached a depth (greater than 10 feet) where the potential for cultural resources was low. Spot checking by the archaeological and Native American monitor was also recommended by the CPUC-approved Archaeologist for the trench excavations in disturbed soil/fill material where the potential to encounter historical or archaeological resources was low. Cultural monitoring teams will continue spot checking and if the soil composition changes, full-time monitoring may be recommended. On May 8 and 9, 2017, a paleontological monitor observed burrow trace fossils during excavation in siltstone of the Upper Scripps Formation, determined the extent and context of the resource, and examined/photographed the burrow traces. Under prior direction given by the Qualified Paleontologist to all monitors, this type of resource (burrow trace) does not constitute a significant or unique resource and work was allowed to continue after the monitor noted the observation.
4. On May 9, 2017, two small diesel fuel releases, each approximately 4-6 ounces, were observed below a dump truck's gas tank while the truck was fueling. The stained rock and soil beneath the gas tank were immediately shoveled-up, bagged, and placed in a labeled on-site hazardous waste drum on May 9, 2017. The following day the contractor met with the fueling service and went over the proper fueling procedures. No other releases and/or spills occurred during this reporting period. No other reportable releases and/or spills occurred during this reporting period.

5. Daytime construction activities during this reporting period were confined to Monday through Friday and occurred between 7:00 a.m. and 5:30 p.m. A noise permit was obtained from the City of San Diego for nighttime construction activities. Nighttime construction activities were confined to Sunday through Thursday and occurred between 9:00 p.m. and 5:00 a.m.
6. Project personnel parked their personal vehicles within a designated personal vehicle parking area within the project limits within the Stonebridge Staging Yard. Workers parked within the work limits of the Driving Range Staging Yard or parked on the adjacent public street.
7. During this reporting period, the QSP conducted daily and rain inspections for the qualifying rain event that ended on May 9, 2017. Within 24 hours of the rain event ending and as recommended by the QSP, the contractor swept the gutters and performed storm drain inlet BMP maintenance along the ROW trench to prevent potential non-stormwater discharges during active construction. The contractor finished replacing the filter fabric and gravel bag inlet BMPs with Dura-wattle on select storm drains inlets to mitigate repetitive gravel bag damage in high traffic areas. During sawcutting activities, a vacuum was used to collect excess water and a street sweeper was used to clean up excess sediment/dust. All equipment staged along the ROW had drip pans in place to capture oil drips/leaks and all trash facilities were covered daily.
8. All construction and compliance personnel on site during this reporting period completed the Project Safety and Environmental Awareness Program (SEAP). To date, approximately 646 Project personnel have received the required SEAP training, and 533 Project personnel have received the UXO training.
9. No Compliance Level Incidents occurred during this reporting period.
10. No public complaints were received during this reporting period.

Agency Representatives during Construction (other than CPUC EMs): None

CPUC NOTICES TO PROCEED (NTPs)

Table 1 summarizes the CPUC NTP activity for the SDG&E Sycamore-Peñasquitos 230-kV Transmission Line Project to date.

Table 1 CPUC NTPs

NTP #	Date Submitted	Date Issued	Segment #	Description
1	12/05/16	12/29/16	N/A	Mobilize and begin operations at the construction staging yards.
2	01/23/17	02/07/17	Segment B	Construct the underground portion of the Project from Sycamore Substation to Structure P03, and from Structure P05 to Structure CC MM CP.

NTP #	Date Submitted	Date Issued	Segment #	Description
3	02/03/17	02/27/17	Segment A	1. Overhead construction from Sycamore Substation to Structure P06
			Segment C	2. Overhead construction from Structure CC MM CP to the Peñasquitos Substation
				3. Deepwell AC mitigation installation
				4. Construction activities at Sycamore Canyon and Peñasquitos Substations

MINOR PROJECT REFINEMENT & TEMPORARY EXTRA WORKSPACE REQUESTS

Tables 2 and 3 summarize the Minor Project Refinements (MPRs) and Temporary Extra Workspace (TEWS) Requests have been submitted to date.

Table 2 Minor Project Refinement (MPR) Requests

MPR Request	Date Submitted	Date Issued	Segment #	Description
#1	12/06/16	1/11/17	Segment A	Underground 230-kV getaway from Sycamore Substation to Structure P03.
#2	01/17/17	01/24/17	Segment B	Realignment of the 230-kV underground transmission line from Miramar Road north on Black Mountain Road and west on Activity Road.
#3	03/06/17	03/08/17	Segment A	Provides temporary power to the SDG&E trailer at the Stonebridge Staging Yard through the existing power box located outside of the existing Project boundary.
#4	04/18/17	04/20/17	Segment B	Modifies the approved 2.61-acre Vulcan Mine Yard location approximately 884 feet to the west to an approximately 1.71-acre paved area.

Table 3 Temporary Extra Workspace (TEWS) Requests

TEWS Request	Date Submitted	Date Issued	Segment #	Description
None to date				

NON-COMPLIANCES, PROJECT MEMORANDA & INCIDENTS

No Compliance Level Incidents or Project Memoranda were issued during the subject period.

Table 4 Non-Compliances, Project Memoranda, and Other Incidents

Type	Date	Location	Description
Level 1	04/12/2017	Segment B	Potable water was used in a street sweeper
Memoranda	04/19/2017	Segment B	Traffic incident at Driving Range Staging Yard
Level 1	04/24/2017	Segment B	Presence of trash along the project alignment
Level 1	05/01/2017	Segment B	Working outside of City-approved hours
Memoranda	05/03/2017	Segment B	Traffic incident at Snapple/7-Up Plant

ATTACHMENT A INSPECTION REPORTS

2017-05-08 PM Inspection Report

SDG&E Sycamore-Peñasquitos 230-kV Transmission Line Project: Daily Inspection Report

Inspection Date	2017-05-08
Start Time	20:00:00
End Time	12:00:00
Monitor Name	Jerry Scott
Organization	The Sanberg Group (Sanberg)
Summary of Construction Activities	Crews are excavating, trenching, and shoring. Installing and removing steel plates. Working on vaults, asphalt work, vacuum truck, and street sweeper. Hauling off fill to designated dump site
Summary of Compliance Activities	All cones, markers, barriers, signage and traffic markers were in place. All trenches were sealed with steel plates when not under construction. LEI, superintendent, SDG&E representatives, Paleo, Cultural, Native American and bios were all present.
Were any issues encountered?	No

Photo Log

Photo



Caption Ramps installed in trenches for egress.

Photo Attributes Capture Date/Time: Mon May 08 2017 21:32:54 GMT-0700 (PDT)
Coordinates: 32.888779, -117.164341
View Direction: Northeast

Photo



Caption Open trenches with clearly marked boundaries

Photo Attributes Capture Date/Time: Mon May 08 2017 21:27:21 GMT-0700 (PDT)
Coordinates: 32.888757, -117.162397
View Direction: Northeast

Photo



Caption Removing steel plates to continue with underground work.

Photo Attributes Capture Date/Time: Mon May 08 2017 21:22:56 GMT-0700 (PDT)
Coordinates: 32.888795, -117.164362
View Direction: Northeast

Photo



Caption BMPs in place and in good working condition.

Photo Attributes Capture Date/Time: Mon May 08 2017 21:10:15 GMT-0700 (PDT)
 Coordinates: 32.889417, -117.182649
 View Direction: Northeast

Photo



Caption Downward-facing lighting in place as well as traffic flaggers.

Photo Attributes Capture Date/Time: Mon May 08 2017 21:08:26 GMT-0700 (PDT)
 Coordinates: 32.889237, -117.182628
 View Direction: Northeast

Daily Checklist

Q1 – General Avoidance and Minimization: (a) Were the limits of work areas and access roads clearly marked? (b) Were construction activities limited to CPUC-approved work areas? Met Requirements

Q1 Notes Work limits were clearly marked and within CPUC-approved work areas.

Q2 – Air Quality/GHG: (a) Were dust avoidance and minimization requirements implemented and monitored Met Requirements

adequately? (b) Was dust generation below required thresholds? (c) Were equipment and vehicles maintained and operated in a manner to limit emissions? (d) Was organic waste collected and separated from non-organic waste for appropriate composting or recycling, as appropriate?

Q2 Notes

There was very little to no dust observed due to the damp conditions. No vehicles were observed idling for more than 5 minutes.

Q3 – Special-Status Plants: Were impact avoidance and minimization requirements for special-status plants implemented adequately (e.g., avoiding sensitive areas)?

N/A

Q3 Notes

No special-status species in tonight's work areas.

Q4 – Wildlife (Non-Avian): Were impact avoidance and minimization requirements for wildlife implemented adequately (e.g., avoiding sensitive areas, covering excavations, and inspecting equipment/trenches)?

Met Requirements

Q4 Notes

All excavations were properly covered and included ramps.

Q5 – Nesting and Burrowing Birds: (a) Were active nests and occupied burrows identified and monitored during applicable seasons, as required? (b) Were impact avoidance and minimization requirements for any active nests or occupied burrows implemented adequately?

N/A

Q5 Notes

No active nests in the immediate work area this evening.

Q6 – Water Features and Aquatic Habitat: Were water features avoided?

N/A

Q6 Notes

No water features in tonight's work areas.

Q7 – Stormwater, Erosion, and Sediment Control: (a) Were erosion and sediment control BMPs in place and functioning properly? (b) Were inactive or completed work areas stabilized and/or restored adequately?

Met Requirements

Q7 Notes

All BMPs were in place and in good working order.

Q8 – Invasive Weed Control: Were procedures to prevent the spread of invasive weeds implemented adequately?

Met Requirements

Q8 Notes

Shaker plates are installed at the entrance to the storage yard.

Q9 – Hazardous Materials and Waste Management: (a) Were hazardous materials stored and labeled properly? (b) Was hazardous material waste disposed of appropriately? (c) Were any spills or leaks addressed adequately? (d) Was solid waste collected and disposed of adequately?

Met Requirements

Q9 Notes

Hazardous materials were clearly labeled and stored with secondary containment.

Q10 – Fire Management: (a) Were fire prevention procedures in place? (b) Was firefighting equipment available on site?

Met Requirements

Q10 Notes

Fire-fighting equipment was in place.

Q11 – Cultural, Paleontological, and Tribal Resources: (a) Were cultural, paleontological, and tribal resources monitoring and impact avoidance occurring as required? (b) If potential resources or human remains were inadvertently discovered, were response procedures and protocols implemented as required?

Met Requirements

Q11 Notes

All monitors were present and no human remains encountered.

Q12 – Construction Noise: (a) Were noise minimization measures in place, as required? (b) If noise complaints were received, were they documented and addressed, as required?

Met Requirements

Q12 Notes

Construction noise was kept to a minimum such as flashers for back up instead horns in dump trucks.

Q13 – Maintain Access: (a) Was access to driveways (e.g., businesses, schools, residences) maintained as required? (b) Was access to recreational areas maintained and appropriate signage installed? (c) Was pedestrian and bicycle access maintained, or were detours clearly defined?

Met Requirements

Q13 Notes

Local access was maintained to the businesses in the area and driveways remained open.

Q14 – Traffic Control (a) Were flaggers present at all times? (b) Were barriers, cones, and signs in place? (c) Were detours clearly marked?

Met Requirements

Q14 Notes

All cones, barriers, signage, and traffic flaggers were in place and highly visible.

Q15 – Helicopter Use (a) Were helicopter use restrictions implemented adequately? (b) Were helicopter take-off and landing sites within prescribed limits?	N/A
Q15 Notes	No helicopters in use.
Q16 – Worker Training and Communication: Have all workers on site received the required environmental trainings for the project?	Met Requirements
Q16 Notes	All personnel had the required training and displayed on their hard hats.
Q17 – MMCRP Implementation: (a) Were project activities consistent with the approved project as defined in the EIR and subsequent CPUC authorizations? (b) Were MMCRP procedures implemented adequately?	Met Requirements
Q17 Notes	All mitigation measures were observed and in practice.

2017-05-09 AM Inspection Report

SDG&E Sycamore- Peñasquitos 230-kV Transmission Line Project: Daily Inspection Report

Inspection Date	2017-05-09
Start Time	04:00:00
End Time	06:00:00
Monitor Name	Jerry Scott
Organization	The Sanberg Group (Sanberg)
Summary of Construction Activities	Crews were excavating, trenching, shoring, asphalt work, and jack hammering. Dump trucks and street sweepers were in use.
Summary of Compliance Activities	All cones, barriers, signage, and flaggers were in place. All trenches were covered with steel plates and ramped when not in use. Work limits were clearly marked and within the approved work areas. No vehicles were observed idling more than 5 minutes. Dust was at a minimum and fire prevention equipment was on site.
Were any issues encountered?	No

Photo Log

Photo



Caption Locked restrooms for the ladie's use
Photo Attributes Capture Date/Time: Tue May 09 2017 05:53:17 GMT-0700 (PDT)
Coordinates: 32.891089, -117.191602
View Direction: Northwest

Photo



Caption Requirement reminders posted at entrance to storage yard.

Photo Attributes Capture Date/Time: Tue May 09 2017 05:52:16 GMT-0700 (PDT)
Coordinates: 32.891303, -117.191824
View Direction: Northeast

Photo



Caption Steel plates covering trenches and sealed with asphalt.

Photo Attributes Capture Date/Time: Tue May 09 2017 05:43:28 GMT-0700 (PDT)
Coordinates: 32.889205, -117.154928
View Direction: East

Photo



Caption Equipment returned to storage location and street is cleared.

Photo Attributes Capture Date/Time: Tue May 09 2017 05:41:08 GMT-0700 (PDT)
 Coordinates: 32.889159, -117.155222
 View Direction: Southwest

Photo



Caption Digital signage in place.

Photo Attributes Capture Date/Time: Tue May 09 2017 05:35:32 GMT-0700 (PDT)
 Coordinates: 32.885427, -117.168321
 View Direction: West

Daily Checklist

Q1 – General Avoidance and Minimization: (a) Were the limits of work areas and access roads clearly marked? (b) Were construction activities limited to CPUC-approved work areas? Met Requirements

Q1 Notes All work was clearly marked and within CPUC-approved areas.

Q2 – Air Quality/GHG: (a) Were dust avoidance and minimization requirements implemented and monitored Met Requirements

adequately? (b) Was dust generation below required thresholds? (c) Were equipment and vehicles maintained and operated in a manner to limit emissions? (d) Was organic waste collected and separated from non-organic waste for appropriate composting or recycling, as appropriate?

Q2 Notes

Very little dust was created due to damp conditions. No vehicles were observed idling over 5 minutes.

Q3 – Special-Status Plants: Were impact avoidance and minimization requirements for special-status plants implemented adequately (e.g., avoiding sensitive areas)?

N/A

Q3 Notes

There were no special status plants within tonight's work areas

Q4 – Wildlife (Non-Avian): Were impact avoidance and minimization requirements for wildlife implemented adequately (e.g., avoiding sensitive areas, covering excavations, and inspecting equipment/trenches)?

Met Requirements

Q4 Notes

All excavations were covered and lighting was downward-facing.

Q5 – Nesting and Burrowing Birds: (a) Were active nests and occupied burrows identified and monitored during applicable seasons, as required? (b) Were impact avoidance and minimization requirements for any active nests or occupied burrows implemented adequately?

N/A

Q5 Notes

There were no active nests in the immediate area of tonight's work.

Q6 – Water Features and Aquatic Habitat: Were water features avoided?

N/A

Q6 Notes

No water features in tonight's work area.

Q7 – Stormwater, Erosion, and Sediment Control: (a) Were erosion and sediment control BMPs in place and functioning properly? (b) Were inactive or completed work areas stabilized and/or restored adequately?

Met Requirements

Q7 Notes

All BMPs were in place and in good working order.

Q8 – Invasive Weed Control: Were procedures to prevent the spread of invasive weeds implemented adequately?

Met Requirements

Q8 Notes

Shaker plates were installed at the entrance to the storage yard.

Q9 – Hazardous Materials and Waste Management: (a) Were hazardous materials stored and labeled properly? (b) Was hazardous material waste disposed of appropriately? (c) Were any spills or leaks addressed adequately? (d) Was solid waste collected and disposed of adequately?

Met Requirements

Q9 Notes

All hazardous materials were clearly marked and stored in secondary containment. There were no spills observed.

Q10 – Fire Management: (a) Were fire prevention procedures in place? (b) Was firefighting equipment available on site?

Met Requirements

Q10 Notes

Fire prevention equipment was on site.

Q11 – Cultural, Paleontological, and Tribal Resources: (a) Were cultural, paleontological, and tribal resources monitoring and impact avoidance occurring as required? (b) If potential resources or human remains were inadvertently discovered, were response procedures and protocols implemented as required?

Met Requirements

Q11 Notes

All paleo and cultural monitors were on site. No human remains were encountered.

Q12 – Construction Noise: (a) Were noise minimization measures in place, as required? (b) If noise complaints were received, were they documented and addressed, as required?

Met Requirements

Q12 Notes

Construction noise was kept to a minimum. Beacons were used for back-up instead of horns.

Q13 – Maintain Access: (a) Was access to driveways (e.g., businesses, schools, residences) maintained as required? (b) Was access to recreational areas maintained and appropriate signage installed? (c) Was pedestrian and bicycle access maintained, or were detours clearly defined?

Met Requirements

Q13 Notes

Access to local business and driveways was maintained throughout the night.

Q14 – Traffic Control (a) Were flaggers present at all times? (b) Were barriers, cones, and signs in place? (c) Were detours clearly marked?

Met Requirements

Q14 Notes

Cones, barriers, signage, and flaggers were all in place.

Q15 – Helicopter Use (a) Were helicopter use restrictions implemented adequately? (b) Were helicopter take-off and landing sites within prescribed limits?

N/A

Q15 Notes

No helicopters in use.

Q16 – Worker Training and Communication: Have all workers on site received the required environmental trainings for the project?

Met Requirements

Q16 Notes

All personnel were properly trained and displayed their required stickers on their hard hats.

Q17 – MMCRP Implementation: (a) Were project activities consistent with the approved project as defined in the EIR and subsequent CPUC authorizations? (b) Were MMCRP procedures implemented adequately?

Met Requirements

Q17 Notes

All mitigation measures were in practice and observed.

2017-05-09 PM Inspection Report

SDG&E Sycamore- Peñasquitos 230-kV Transmission Line Project: Daily Inspection Report

Inspection Date	2017-05-09
Start Time	20:00:00
End Time	12:00:00
Monitor Name	Jerry Scott
Organization	The Sanberg Group (Sanberg)
Summary of Construction Activities	Crews were excavating, trenching, shoring, asphalt work, dump trucks for fill removal, and street sweepers
Summary of Compliance Activities	LEI, bios, Native American, paleo, cultural monitors were all on site. Superintendent, SDG&E reps, city inspector were all on site. Lighting was in place and downward facing. Fire prevention equipment was on site at each location. Dust prevention and noise reduction were in practice. BMPs were in place and fully functional. Work limits were clearly marked. All personnel on site were properly trained.
Were any issues encountered?	No

Photo Log

Photo



Caption Secondary containment pans in place under parked equipment in the storage yard.

Photo Attributes Capture Date/Time: Tue May 09 2017 20:53:27 GMT-0700 (PDT)
Coordinates: 32.891176, -117.191429
View Direction: Northeast

Photo



Caption Digital signage in place.

Photo Attributes Capture Date/Time: Tue May 09 2017 20:45:58 GMT-0700 (PDT)
Coordinates: 32.885446, -117.167967
View Direction: West

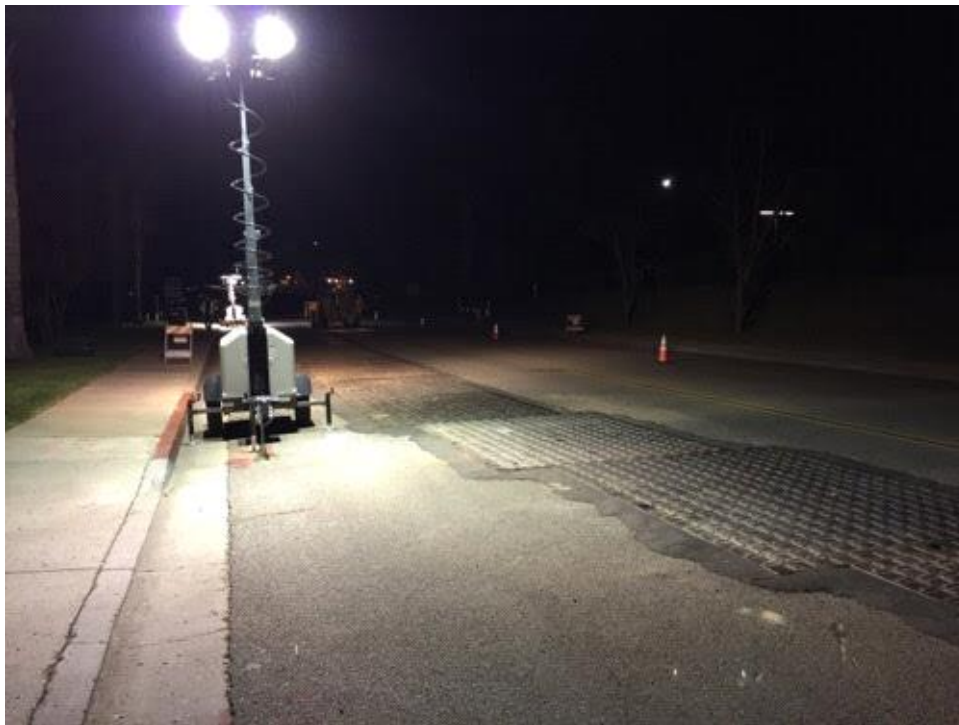
Photo



Caption Traffic flaggers in place.

Photo Attributes Capture Date/Time: Tue May 09 2017 20:38:57 GMT-0700 (PDT)
Coordinates: 32.888793, -117.163886
View Direction: South

Photo



Caption Steel plates in place covering the trenches.

Photo Attributes Capture Date/Time: Tue May 09 2017 20:33:19 GMT-0700 (PDT)
 Coordinates: 32.888797, -117.162468
 View Direction: East

Photo



Caption Setting up lighting for tonight's work.

Photo Attributes Capture Date/Time: Tue May 09 2017 20:29:47 GMT-0700 (PDT)
 Coordinates: 32.888820, -117.163855
 View Direction: East

Daily Checklist

Q1 – General Avoidance and Minimization: (a) Were the limits of work areas and access roads clearly marked? (b) Were construction activities limited to CPUC-approved work areas?

Met Requirements

Q1 Notes

Work area limits were clearly marked and within CPUC-approved areas.

Q2 – Air Quality/GHG: (a) Were dust avoidance and minimization requirements implemented and monitored

Met Requirements

adequately? (b) Was dust generation below required thresholds? (c) Were equipment and vehicles maintained and operated in a manner to limit emissions? (d) Was organic waste collected and separated from non-organic waste for appropriate composting or recycling, as appropriate?

Q2 Notes	Dust levels were very low and no vehicles were observed idling over the 5-minute limit.
Q3 – Special-Status Plants: Were impact avoidance and minimization requirements for special-status plants implemented adequately (e.g., avoiding sensitive areas)?	N/A
Q3 Notes	No special status plants within tonight's scope of work.
Q4 – Wildlife (Non-Avian): Were impact avoidance and minimization requirements for wildlife implemented adequately (e.g., avoiding sensitive areas, covering excavations, and inspecting equipment/trenches)?	Met Requirements
Q4 Notes	All trenches were sealed when not in use and sealed with asphalt.
Q5 – Nesting and Burrowing Birds: (a) Were active nests and occupied burrows identified and monitored during applicable seasons, as required? (b) Were impact avoidance and minimization requirements for any active nests or occupied burrows implemented adequately?	N/A
Q5 Notes	No active nests in the immediate area.
Q6 – Water Features and Aquatic Habitat: Were water features avoided?	N/A
Q6 Notes	No water features in tonight's work areas.
Q7 – Stormwater, Erosion, and Sediment Control: (a) Were erosion and sediment control BMPs in place and functioning properly? (b) Were inactive or completed work areas stabilized and/or restored adequately?	Met Requirements
Q7 Notes	All BMPs were in place and in good working order.
Q8 – Invasive Weed Control: Were procedures to prevent the spread of invasive weeds implemented adequately?	Met Requirements
Q8 Notes	Steel shaker plates are in place at the entrance to the storage yard.
Q9 – Hazardous Materials and Waste Management: (a) Were hazardous materials stored and labeled properly? (b) Was hazardous material waste disposed of appropriately? (c) Were any spills or leaks addressed adequately? (d) Was solid waste collected and disposed of adequately?	Met Requirements
Q9 Notes	All hazardous materials are clearly labeled and stored within secondary containment.
Q10 – Fire Management: (a) Were fire prevention procedures in place? (b) Was firefighting equipment available on site?	Met Requirements
Q10 Notes	Fire prevention equipment was on site at each location.
Q11 – Cultural, Paleontological, and Tribal Resources: (a) Were cultural, paleontological, and tribal resources monitoring and impact avoidance occurring as required? (b) If potential resources or human remains were inadvertently discovered, were response procedures and protocols implemented as required?	Met Requirements
Q11 Notes	All cultural, Native American, paleo, and bios were present. No human remains were discovered.
Q12 – Construction Noise: (a) Were noise minimization measures in place, as required? (b) If noise complaints were received, were they documented and addressed, as required?	Met Requirements
Q12 Notes	Construction noise was kept to a minimum. No complaints were reported.
Q13 – Maintain Access: (a) Was access to driveways (e.g., businesses, schools, residences) maintained as required? (b) Was access to recreational areas maintained and appropriate signage installed? (c) Was pedestrian and bicycle access maintained, or were detours clearly defined?	Met Requirements
Q13 Notes	Access to local business and driveways were maintained throughout the night.
Q14 – Traffic Control (a) Were flaggers present at all times? (b) Were barriers, cones, and signs in place? (c) Were detours clearly marked?	Met Requirements
Q14 Notes	All cones, markers, barriers, and flaggers were in place and highly visible.

Q15 – Helicopter Use (a) Were helicopter use restrictions implemented adequately? (b) Were helicopter take-off and landing sites within prescribed limits?

N/A

Q15 Notes

No helicopters in use.

Q16 – Worker Training and Communication: Have all workers on site received the required environmental trainings for the project?

Met Requirements

Q16 Notes

All personnel were properly trained Training stickers were worn on their hard hats as required.

Q17 – MMCRP Implementation: (a) Were project activities consistent with the approved project as defined in the EIR and subsequent CPUC authorizations? (b) Were MMCRP procedures implemented adequately?

Met Requirements

Q17 Notes

All mitigation measures were observed and practiced.

2017-05-10 AM Inspection Report

SDG&E Sycamore-Peñasquitos 230-kV Transmission Line Project: Daily Inspection Report

Inspection Date	2017-05-10
Start Time	04:00:00
End Time	06:00:00
Monitor Name	Jerry Scott
Organization	The Sanberg Group (Sanberg)
Summary of Construction Activities	Crews were excavating, trenching, shoring, cutting asphalt, cutting asphalt, Installing steel plates, dump trucks removing fill, and street sweepers for clean-up.
Summary of Compliance Activities	LEI, bios, paleo, tribal, and cultural monitors were on site. Superintendent, SDG&E representatives, inspectors were all on site. Traffic control was in place. Dust, noise, and fire prevention practices were in use. Work areas were well lit and clearly marked within CPUC-approved work areas.
Were any issues encountered?	No

Photo Log

Photo



Caption Roads cleared and equipment returned and stored with cones surrounding.

Photo Attributes Capture Date/Time: Wed May 10 2017 05:51:29 GMT-0700 (PDT)
Coordinates: 32.889213, -117.155543
View Direction: Southwest

Photo



Caption Trenches covered with steel plates and capped with asphalt.

Photo Attributes Capture Date/Time: Wed May 10 2017 05:48:40 GMT-0700 (PDT)
Coordinates: 32.892914, -117.153477
View Direction: Southeast

Photo



Caption Bird netting in place to discourage nest building on stationary equipment.

Photo Attributes Capture Date/Time: Wed May 10 2017 05:37:51 GMT-0700 (PDT)
Coordinates: 32.891029, -117.191152
View Direction: Southwest

Photo



Caption Drip pans in place as required.

Photo Attributes Capture Date/Time: Wed May 10 2017 05:36:53 GMT-0700 (PDT)
 Coordinates: 32.891081, -117.191233
 View Direction: Northeast

Photo



Caption Hazardous materials clearly marked and stored in secondary containment.

Photo Attributes Capture Date/Time: Wed May 10 2017 05:35:09 GMT-0700 (PDT)
 Coordinates: 32.891103, -117.191324
 View Direction: North

Daily Checklist

<p>Q1 – General Avoidance and Minimization: (a) Were the limits of work areas and access roads clearly marked? (b) Were construction activities limited to CPUC-approved work areas?</p> <p>Q1 Notes</p>	<p>Met Requirements</p> <p>Work areas were clearly marked and within CPUC approved areas.</p>
<p>Q2 – Air Quality/GHG: (a) Were dust avoidance and minimization requirements implemented and monitored adequately? (b) Was</p>	<p>Met Requirements</p>

dust generation below required thresholds? (c) Were equipment and vehicles maintained and operated in a manner to limit emissions? (d) Was organic waste collected and separated from non-organic waste for appropriate composting or recycling, as appropriate?

Q2 Notes

Very little dust was created and no vehicles were observed idling over the 5-minute limit.

Q3 – Special-Status Plants: Were impact avoidance and minimization requirements for special-status plants implemented adequately (e.g., avoiding sensitive areas)?

N/A

Q3 Notes

No special-status plants within the work area.

Q4 – Wildlife (Non-Avian): Were impact avoidance and minimization requirements for wildlife implemented adequately (e.g., avoiding sensitive areas, covering excavations, and inspecting equipment/trenches)?

Met Requirements

Q4 Notes

All trenches and vaults were covered with steel plates and capped with asphalt.

Q5 – Nesting and Burrowing Birds: (a) Were active nests and occupied burrows identified and monitored during applicable seasons, as required? (b) Were impact avoidance and minimization requirements for any active nests or occupied burrows implemented adequately?

N/A

Q5 Notes

No nests within the immediate work area.

Q6 – Water Features and Aquatic Habitat: Were water features avoided?

N/A

Q6 Notes

No water features in the work areas.

Q7 – Stormwater, Erosion, and Sediment Control: (a) Were erosion and sediment control BMPs in place and functioning properly? (b) Were inactive or completed work areas stabilized and/or restored adequately?

Met Requirements

Q7 Notes

All BMPs were in place and in good working order

Q8 – Invasive Weed Control: Were procedures to prevent the spread of invasive weeds implemented adequately?

Met Requirements

Q8 Notes

Steel shaker plates are installed at the entrance to the storage yard.

Q9 – Hazardous Materials and Waste Management: (a) Were hazardous materials stored and labeled properly? (b) Was hazardous material waste disposed of appropriately? (c) Were any spills or leaks addressed adequately? (d) Was solid waste collected and disposed of adequately?

Met Requirements

Q9 Notes

All hazardous waste are clearly labeled and stored in secondary containment. No spills were observed.

Q10 – Fire Management: (a) Were fire prevention procedures in place? (b) Was firefighting equipment available on site?

Met Requirements

Q10 Notes

Fire prevention equipment was on site at each location. Fire blankets were used where sparks were created.

Q11 – Cultural, Paleontological, and Tribal Resources: (a) Were cultural, paleontological, and tribal resources monitoring and impact avoidance occurring as required? (b) If potential resources or human remains were inadvertently discovered, were response procedures and protocols implemented as required?

Met Requirements

Q11 Notes

All cultural, paleo, and tribal monitors were on site. No human remains were encountered.

Q12 – Construction Noise: (a) Were noise minimization measures in place, as required? (b) If noise complaints were received, were they documented and addressed, as required?

Met Requirements

Q12 Notes

Construction noise was kept to a minimum. No complaints were reported.

Q13 – Maintain Access: (a) Was access to driveways (e.g., businesses, schools, residences) maintained as required? (b) Was access to recreational areas maintained and appropriate signage installed? (c) Was pedestrian and bicycle access maintained, or were detours clearly defined?

Met Requirements

Q13 Notes

Access to local business and driveways were maintained throughout the evening.

Q14 – Traffic Control (a) Were flaggers present at all times? (b) Were barriers, cones, and signs in place? (c) Were detours clearly marked?

Met Requirements

Q14 Notes

All cones, markers, barriers, signage, and traffic flaggers were in place.

Q15 – Helicopter Use (a) Were helicopter use restrictions implemented adequately? (b) Were helicopter take-off and landing sites within prescribed limits?

N/A

Q15 Notes

No helicopters in use.

Q16 – Worker Training and Communication: Have all workers on site received the required environmental trainings for the project?

Met Requirements

Q16 Notes

All personnel were properly trained and displayed their stickers on their hard hats.

Q17 – MMCRP Implementation: (a) Were project activities consistent with the approved project as defined in the EIR and subsequent CPUC authorizations? (b) Were MMCRP procedures implemented adequately?

Met Requirements

Q17 Notes

All mitigation measures were observed and practiced.

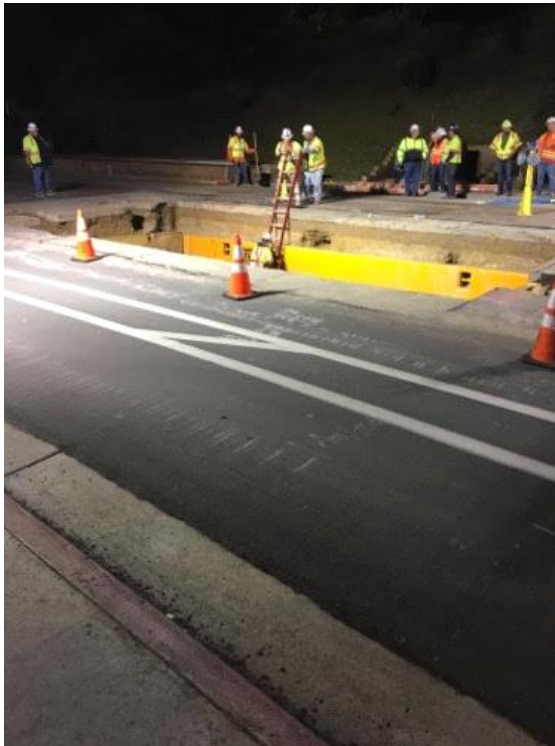
2017-05-11 PM Inspection Report

SDG&E Sycamore-Peñasquitos 230-kV Transmission Line Project: Daily Inspection Report

Inspection Date	2017-05-11
Start Time	20:03:00
End Time	22:58:00
Monitor Name	Korey Klutz
Organization	The Sanberg Group (Sanberg)
Summary of Construction Activities	Work included excavation and laying conduit in Carroll Rd and Trade St laying conduit.
Summary of Compliance Activities	Monitors including LEI, paleo and cultural were all onsite ensuring compliance. All work was done with approved CPUC work limits.
Were any issues encountered?	No

Photo Log

Photo



Caption Vault at Carroll Rd

Photo Attributes Capture Date/Time: Thu May 11 2017 22:44:03 GMT-0700 (PDT)
Coordinates: 32.885170, -117.172794
View Direction: South

Photo



Caption Traffic control at Trade St

Photo Attributes Capture Date/Time: Thu May 11 2017 22:14:15 GMT-0700 (PDT)
Coordinates: 32.889101, -117.159309
View Direction: East

Photo



Caption Trade excavation with Paleo monitor

Photo Attributes Capture Date/Time: Thu May 11 2017 22:13:08 GMT-0700 (PDT)
Coordinates: 32.889161, -117.159451
View Direction: Southwest

Photo



Caption Trade St open trench with shoring

Photo Attributes Capture Date/Time: Thu May 11 2017 22:08:07 GMT-0700 (PDT)
Coordinates: 32.888813, -117.160554
View Direction: West

Photo



Caption Trade Street trench

Photo Attributes Capture Date/Time: Thu May 11 2017 22:06:55 GMT-0700 (PDT)
Coordinates: 32.888795, -117.162641
View Direction: East

Daily Checklist

Q1 – General Avoidance and Minimization: (a) Were the limits of work areas and access roads clearly marked? (b) Were construction activities limited to CPUC-approved work areas? Met Requirements

Q2 – Air Quality/GHG: (a) Were dust avoidance and minimization requirements implemented and monitored adequately? (b) Was dust generation below required thresholds? (c) Were equipment and vehicles maintained and operated in a manner to limit emissions? (d) Was organic waste collected and separated from non-organic waste for appropriate composting or recycling, as appropriate?	Met Requirements
Q3 – Special-Status Plants: Were impact avoidance and minimization requirements for special-status plants implemented adequately (e.g., avoiding sensitive areas)?	N/A
Q4 – Wildlife (Non-Avian): Were impact avoidance and minimization requirements for wildlife implemented adequately (e.g., avoiding sensitive areas, covering excavations, and inspecting equipment/trenches)?	N/A
Q5 – Nesting and Burrowing Birds: (a) Were active nests and occupied burrows identified and monitored during applicable seasons, as required? (b) Were impact avoidance and minimization requirements for any active nests or occupied burrows implemented adequately?	N/A
Q5 Notes	Nest sites are near the active work sites
Q6 – Water Features and Aquatic Habitat: Were water features avoided?	N/A
Q7 – Stormwater, Erosion, and Sediment Control: (a) Were erosion and sediment control BMPs in place and functioning properly? (b) Were inactive or completed work areas stabilized and/or restored adequately?	Met Requirements
Q7 Notes	BMPs installed throughout work areas
Q8 – Invasive Weed Control: Were procedures to prevent the spread of invasive weeds implemented adequately?	N/A
Q9 – Hazardous Materials and Waste Management: (a) Were hazardous materials stored and labeled properly? (b) Was hazardous material waste disposed of appropriately? (c) Were any spills or leaks addressed adequately? (d) Was solid waste collected and disposed of adequately?	Met Requirements
Q10 – Fire Management: (a) Were fire prevention procedures in place? (b) Was firefighting equipment available on site?	Met Requirements
Q11 – Cultural, Paleontological, and Tribal Resources: (a) Were cultural, paleontological, and tribal resources monitoring and impact avoidance occurring as required? (b) If potential resources or human remains were inadvertently discovered, were response procedures and protocols implemented as required?	Met Requirements
Q12 – Construction Noise: (a) Were noise minimization measures in place, as required? (b) If noise complaints were received, were they documented and addressed, as required?	Met Requirements
Q13 – Maintain Access: (a) Was access to driveways (e.g., businesses, schools, residences) maintained as required? (b) Was access to recreational areas maintained and appropriate signage installed? (c) Was pedestrian and bicycle access maintained, or were detours clearly defined?	Met Requirements
Q14 – Traffic Control (a) Were flaggers present at all times? (b) Were barriers, cones, and signs in place? (c) Were detours clearly marked?	Met Requirements
Q14 Notes	Traffic control implemented throughout ROW
Q15 – Helicopter Use (a) Were helicopter use restrictions implemented adequately? (b) Were helicopter take-off and landing sites within prescribed limits?	N/A
Q16 – Worker Training and Communication: Have all workers on site received the required environmental trainings for the project?	Met Requirements
Q17 – MMCRP Implementation: (a) Were project activities consistent with the approved project as defined in the EIR and subsequent CPUC authorizations? (b) Were MMCRP procedures implemented adequately?	Met Requirements

2017-05-12 AM Inspection Report

SDG&E Sycamore-Peñasquitos 230-kV Transmission Line Project: Daily Inspection Report

Inspection Date	2017-05-12
Start Time	06:45:00
End Time	07:39:00
Monitor Name	Korey Klutz
Organization	The Sanberg Group (Sanberg)
Summary of Construction Activities	Work from the previous night was completed and all equipment properly stored.
Summary of Compliance Activities	Traffic and safety signage established throughout ROW work areas.
Were any issues encountered?	No

Photo Log

Photo



Caption Equipment properly stored at Driving Range Yard.

Photo Attributes Capture Date/Time: Fri May 12 2017 07:37:19 GMT-0700 (PDT)
Coordinates: 32.891221, -117.191782
View Direction: East

Photo



Caption Driving Range Yard.

Photo Attributes Capture Date/Time: Fri May 12 2017 07:36:40 GMT-0700 (PDT)
Coordinates: 32.891240, -117.191834
View Direction: East

Photo



Caption Carrol Rd work site from previous night.

Photo Attributes Capture Date/Time: Fri May 12 2017 07:31:43 GMT-0700 (PDT)
Coordinates: 32.892116, -117.185166
View Direction: South

Photo



Caption Carrol Rd and Brown Deer Rd equipment storage.

Photo Attributes Capture Date/Time: Fri May 12 2017 07:30:38 GMT-0700 (PDT)
Coordinates: 32.888867, -117.180240
View Direction: Northeast

Photo



Caption Trade Street trench plates.

Photo Attributes Capture Date/Time: Fri May 12 2017 07:26:09 GMT-0700 (PDT)
Coordinates: 32.888703, -117.160872
View Direction: West

Daily Checklist

Q1 – General Avoidance and Minimization: (a) Were the limits of work areas and access roads clearly marked? (b) Were construction activities limited to CPUC-approved work areas?	Met Requirements
Q2 – Air Quality/GHG: (a) Were dust avoidance and minimization requirements implemented and monitored adequately? (b) Was dust generation below required thresholds? (c) Were equipment and vehicles maintained and operated in a manner to limit emissions? (d) Was organic waste collected and separated from non-organic waste for appropriate composting or recycling, as appropriate?	Met Requirements
Q3 – Special-Status Plants: Were impact avoidance and minimization requirements for special-status plants implemented adequately (e.g., avoiding sensitive areas)?	N/A
Q4 – Wildlife (Non-Avian): Were impact avoidance and minimization requirements for wildlife implemented adequately (e.g., avoiding sensitive areas, covering excavations, and inspecting equipment/trenches)?	N/A
Q5 – Nesting and Burrowing Birds: (a) Were active nests and occupied burrows identified and monitored during applicable seasons, as required? (b) Were impact avoidance and minimization requirements for any active nests or occupied burrows implemented adequately?	N/A
Q6 – Water Features and Aquatic Habitat: Were water features avoided?	N/A
Q7 – Stormwater, Erosion, and Sediment Control: (a) Were erosion and sediment control BMPs in place and functioning properly? (b) Were inactive or completed work areas stabilized and/or restored adequately?	Met Requirements
Q8 – Invasive Weed Control: Were procedures to prevent the spread of invasive weeds implemented adequately?	N/A
Q9 – Hazardous Materials and Waste Management: (a) Were hazardous materials stored and labeled properly? (b) Was hazardous material waste disposed of appropriately? (c) Were any spills or leaks addressed adequately? (d) Was solid waste collected and disposed of adequately?	Met Requirements
Q10 – Fire Management: (a) Were fire prevention procedures in place? (b) Was firefighting equipment available on site?	Met Requirements

Q11 – Cultural, Paleontological, and Tribal Resources: (a) Were cultural, paleontological, and tribal resources monitoring and impact avoidance occurring as required? (b) If potential resources or human remains were inadvertently discovered, were response procedures and protocols implemented as required?	N/A
Q11 Notes	No Active work requiring monitors
Q12 – Construction Noise: (a) Were noise minimization measures in place, as required? (b) If noise complaints were received, were they documented and addressed, as required?	Met Requirements
Q13 – Maintain Access: (a) Was access to driveways (e.g., businesses, schools, residences) maintained as required? (b) Was access to recreational areas maintained and appropriate signage installed? (c) Was pedestrian and bicycle access maintained, or were detours clearly defined?	Met Requirements
Q14 – Traffic Control (a) Were flaggers present at all times? (b) Were barriers, cones, and signs in place? (c) Were detours clearly marked?	Met Requirements
Q15 – Helicopter Use (a) Were helicopter use restrictions implemented adequately? (b) Were helicopter take-off and landing sites within prescribed limits?	N/A
Q16 – Worker Training and Communication: Have all workers on site received the required environmental trainings for the project?	Met Requirements
Q17 – MMCRP Implementation: (a) Were project activities consistent with the approved project as defined in the EIR and subsequent CPUC authorizations? (b) Were MMCRP procedures implemented adequately?	Met Requirements