

PROJECT MEMORANDUM
SYCAMORE-PEÑASQUITOS 230-KV
TRANSMISSION LINE PROJECT

Date: June 29, 2017
To: Billie Blanchard, CPUC Project Manager
From: Sheila Hoyer, CPUC Monitoring Supervisor
Subject: Weekly Report #25 – June 18 to June 23, 2017

INTRODUCTION

This report provides a summary of the construction and compliance activities associated with the SDG&E Sycamore-Peñasquitos 230-kV Transmission Line Project for the week of June 18 to June 23, 2017.

A summary of the Notices to Proceed, and Minor Project Refinement, and Temporary Extra Workspace Requests are provided in Tables 1, 2, and 3, respectively. A summary of Non-compliance, Project Memoranda and Incidents is provided in Table 4. Daily Inspection Reports are provided in Appendix A.

CPUC/Panorama Environmental Monitors (EMs): Jerry Scott and Korey Klutz

STAGING YARDS

Summary of Activity:

Stonebridge Staging Yard:

1. Delivering materials and equipment, and maintaining BMPs.

Driving Range Staging Yard:

1. Maintaining BMPs, and delivering materials and equipment.

Vulcan Staging Yard:

1. Mobilizing began on June 12, 2016. Installing perimeter fence, installing BMPs and delivering materials and equipment.

Underground Transmission Line:

1. Construction occurred in Segment 5 along Sections 2 through 13 (approximately at stations 15+00 to 207+00). Surveying occurred east of I-15 on Segment 3 (approximately at stations 414+00 to 618+00).

2. Saw cutting for trench and vaults, installing vaults and conduit, potholing to locate existing utilities, laying asphalt, maintaining BMPs, installing storm drain inlet protection, pouring concrete for water line relocation and water line relocation pressure testing.

Environmental Compliance:

1. During this reporting period, all pavement was kept clean. No winds occurred that were higher than 20 mph. All off-road diesel-powered construction equipment used on the Project met a minimum of EPA Tier 3 standards.
2. Monitoring for special-status species and inspections for wildlife was implemented to avoid and minimize impacts to biological resources. Construction activities within the Stonebridge Staging Yard and Driving Range Staging Yard were initiated outside of the nesting season, and construction activities remain ongoing. Nest surveys were conducted on June 19, 20, 22 and 23, 2017, in areas for anticipated construction. Daily pre-construction nest monitoring of the red-tailed hawk nest occurred on June 19, 2017. No other nest monitoring occurred during this reporting period. On June 22, 2017, the night crew discovered a northern red diamond rattlesnake (*Crotalus ruber*) on the ground under a pile of conduit pipe. The pipe was removed and the CPUC-approved Qualified Biologist captured the snake and released it unharmed off-site. All project equipment arrived clean and free of mud and/or vegetation.
3. During this reporting period, archaeological, Native American, and paleontological monitoring of vault excavations and trenching occurred in areas of high potential for paleontologically sensitive deposits and archaeological resources. Under the direction of the CPUC-approved archaeologist, spot checking by archaeological and Native American monitors occurred in the trench excavations which were in disturbed soil/fill material where the potential to encounter historical or archaeological resources was low. Cultural monitoring teams will continue spot-checking, and if the soil composition changes, full-time monitoring may be recommended by the CPUC-approved archeologist. No paleontological or archaeological resources were observed during this reporting period.
4. During this reporting period, two releases occurred. On June 20, 2017, a release of approximately two gallons of hydraulic fluid occurred at the Hanson Staging Yard when a backhoe was being loaded onto a flatbed trailer. The release occurred on the concrete surface and was immediately cleaned-up with absorbent pads which were stored in a labeled hazardous waste drum located at the Driving Range Staging Yard. On June 21, 2017, a release of approximately one-half quart of hydraulic fluid occurred from a backhoe. The release occurred on a steel trench plate and was immediately cleaned-up with absorbent pads which were stored in a labeled hazardous waste drum located at the Driving Range Staging Yard. Neither of these releases put any resources at risk. On June 22, 2017, the sub-contractor (NRC) completed a delivery manifest and removed the hazardous waste drums located at Driving Range Staging Yard for proper disposal and delivered two new empty hazardous waste drums.
5. Daytime construction activities during this reporting period were confined to Monday through Friday and occurred between 7:00 am and 5:30 pm A noise

permit was obtained from the City of San Diego for nighttime construction activities. Nighttime construction activities were confined to Sunday through Thursday and occurred between 9:00 pm and 5:00 am.

6. Project personnel parked their personal vehicles within a designated personal vehicle parking area within the project limits within the Stonebridge Staging Yard. Workers parked within the work limits of the Driving Range Staging Yard or parked on the adjacent public street. On June 14, 2017, Traffic Control Permit extensions were provided by the City of San Diego with an expiration date of June 30, 2017 for construction activities occurring along Trade Street, Activity Road, Camino Santa Fe, and Carrol Canyon Road. In addition, Traffic Control Permits were issued by the City on June 21, 2017 for work east of I-15 on Pomerado Road; these permits expire on June 30, 2017.
7. During this reporting period, the QSP conducted daily inspections. During sawcutting activities, a vacuum was used to collect excess water and a street sweeper was used to clean up excess sediment/dust. All equipment staged along the ROW and stored in the staging yards had drip pans in place to capture oil drips/leaks. All trash facilities were covered daily. The QSP participated in the overhead component preliminary site visit on June 21, 2017 to determine locations for BMP installation.
8. All construction and compliance personnel on site during this reporting period completed the Project Safety and Environmental Awareness Program (SEAP). To date, approximately 806 Project personnel have received the required SEAP training, and 692 Project personnel have received the UXO training.
9. There were no compliance level incidents documented during this reporting period.
10. No public complaints were received during this reporting period.

Agency Representatives during Construction (other than CPUC EMs): City of San Diego Traffic Engineer

CPUC NOTICES TO PROCEED (NTPs)

Table 1 summarizes the CPUC NTP activity for the SDG&E Sycamore-Peñasquitos 230-kV Transmission Line Project to date.

Table 1 CPUC NTPs

NTP #	Date Submitted	Date Issued	Segment #	Description
1	12/05/16	12/29/16	N/A	Mobilize and begin operations at the construction staging yards.
2	01/23/17	02/07/17	Segment B	Construct the underground portion of the Project from Sycamore Substation to Structure P03, and from Structure P05 to Structure CC MM CP.

NTP #	Date Submitted	Date Issued	Segment #	Description
3	02/03/17	02/27/17	Segment A	1. Overhead construction from Sycamore Substation to Structure P06
			Segment C	2. Overhead construction from Structure CC MM CP to the Peñasquitos Substation
				3. Deepwell AC mitigation installation
				4. Construction activities at Sycamore Canyon and Peñasquitos Substations

MINOR PROJECT REFINEMENT & TEMPORARY EXTRA WORKSPACE REQUESTS

Tables 2 and 3 summarize the Minor Project Refinements (MPRs) and Temporary Extra Workspace (TEWS) Requests have been submitted to date.

Table 2 Minor Project Refinement (MPR) Requests

MPR Request	Date Submitted	Date Issued	Segment #	Description
#1	12/06/16	1/11/17	Segment A	Underground 230-kV getaway from Sycamore Substation to Structure P03.
#2	01/17/17	01/24/17	Segment B	Realignment of the 230-kV underground transmission line from Miramar Road north on Black Mountain Road and west on Activity Road.
#3	03/06/17	03/08/17	Segment A	Provides temporary power to the SDG&E trailer at the Stonebridge Staging Yard through the existing power box located outside of the existing Project boundary.
#4	04/18/17	04/20/17	Segment B	Modifies the approved 2.61-acre Vulcan Mine Yard location approximately 884 feet to the west to an approximately 1.71-acre paved area.

Table 3 Temporary Extra Workspace (TEWS) Requests

TEWS Request	Date Submitted	Date Issued	Segment #	Description
None to date				

NON-COMPLIANCES, PROJECT MEMORANDA & INCIDENTS

One non-compliance, and no project memoranda or incidents were reported during this reporting period.

Table 4 Non-Compliances, Project Memoranda, and Other Incidents

Type	Date	Location	Description
Level 1	04/12/2017	Segment B	Potable water was used in a street sweeper
Memoranda	04/19/2017	Segment B	Traffic incident at Driving Range Staging Yard
Level 1	04/24/2017	Segment B	Presence of trash along the project alignment
Level 1	05/01/2017	Segment B	Working outside of City-approved hours
Memoranda	05/03/2017	Segment B	Traffic incident at Snapple/7-Up Plant
Memoranda	05/18/2017	Segment B	Traffic incident at Station 169+89
Level 1	06/08/2017	Segment B	Non-adherence to approved Fire Plan
Level 2	06/15/2017	Segment B	Non-adherence to approved Fire Plan

ATTACHMENT A INSPECTION REPORTS

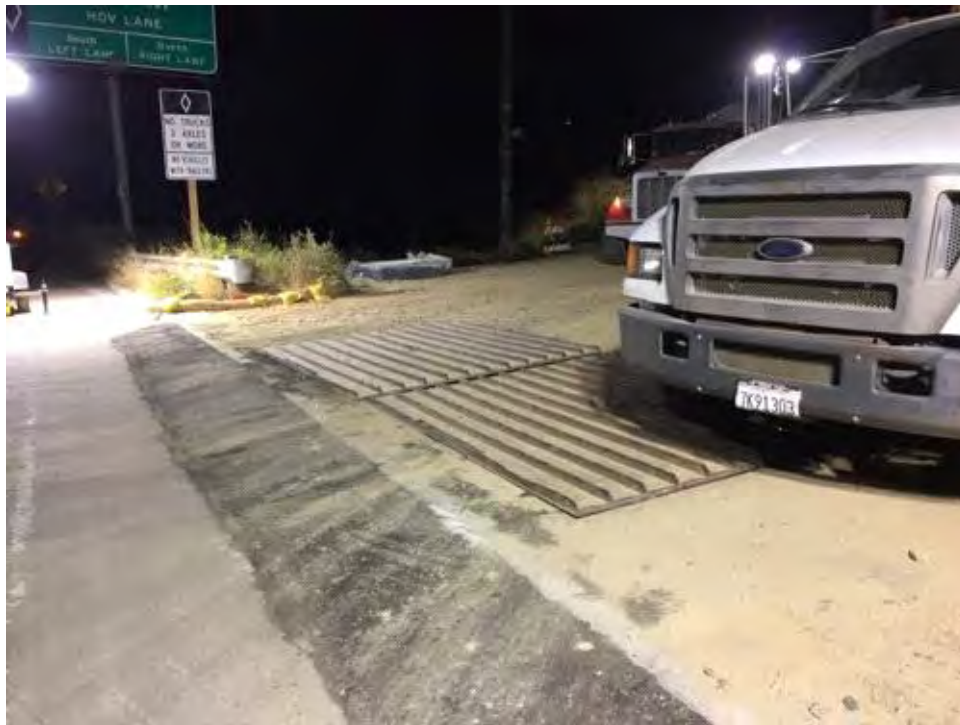
2017-06-19 PM Inspection Report

SDG&E Sycamore-Peñasquitos 230-kV Transmission Line Project: Daily Inspection Report

Inspection Date	2017-06-19
Start Time	19:45:00
End Time	23:45:00
Monitor Name	Jerry Scott
Organization	The Sanberg Group (Sanberg)
Summary of Construction Activities	All traffic flaggers, cones, barriers, and signs were in place. The crews were doing vault work, trenching, shoring, and excavating. Crews were removing and installing steel plates and asphalt work. Dump trucks removed fill and delivered to a designated site.
Summary of Compliance Activities	LEI, all monitors, SDG&E representatives, inspectors, and superintendent were on site. There was a one-hour safety stand down from 8:00 p.m. until 9:00 p.m. All crews were inspected specifically for fire prevention equipment. All crews were found to be in compliance.
Were any issues encountered?	No

Photo Log

Photo



Caption Steel shaker plates at I-15.

Photo Attributes Capture Date/Time: Mon Jun 19 2017 23:48:24 GMT-0700 (PDT)
Coordinates: 32.889539, -117.202179
View Direction: Southwest

Photo



Caption Fire prevention equipment on site.

Photo Attributes Capture Date/Time: Mon Jun 19 2017 22:54:57 GMT-0700 (PDT)
Coordinates: 32.889132, -117.154558
View Direction: Southwest

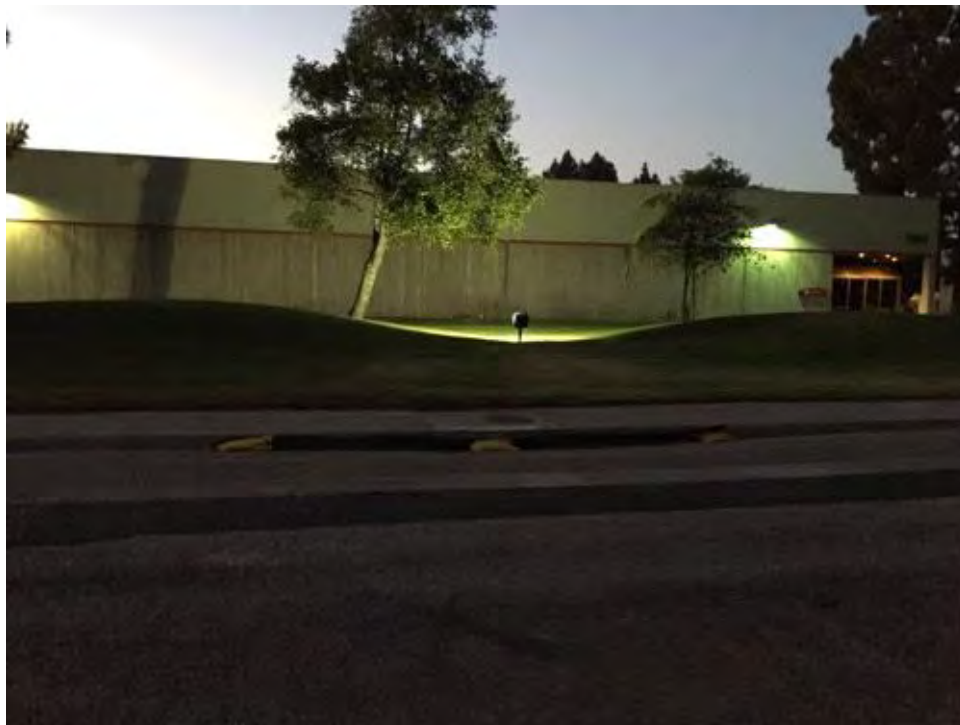
Photo



Caption Trenches covered with steel plates.

Photo Attributes Capture Date/Time: Mon Jun 19 2017 22:09:56 GMT-0700 (PDT)
Coordinates: 32.889726, -117.153444
View Direction: Northeast

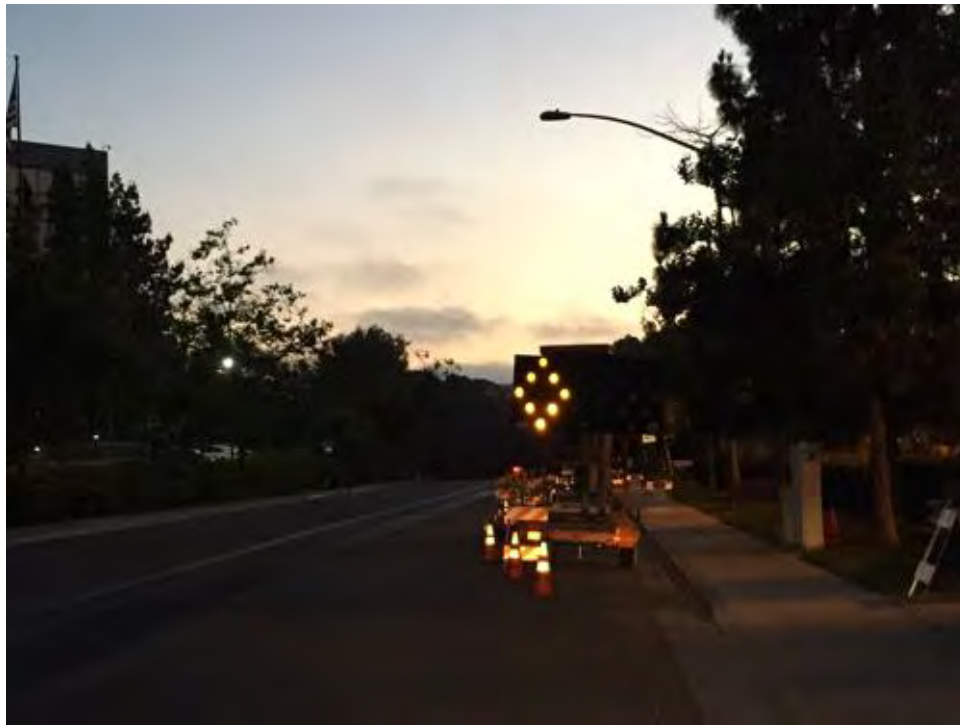
Photo



Caption BMPs in place and in good working order.

Photo Attributes Capture Date/Time: Mon Jun 19 2017 20:24:05 GMT-0700 (PDT)
 Coordinates: 32.889127, -117.156244
 View Direction: Northeast

Photo



Caption Digital signage in place.

Photo Attributes Capture Date/Time: Mon Jun 19 2017 20:21:15 GMT-0700 (PDT)
 Coordinates: 32.888756, -117.164242
 View Direction: Northwest

Daily Checklist

Q1 – General Avoidance and Minimization: (a) Were the limits of work areas and access roads clearly marked? (b) Were construction activities limited to CPUC-approved work areas?	Met Requirements
Q1 Notes	Requirements were met.
Q2 – Air Quality/GHG: (a) Were dust avoidance and minimization requirements implemented and monitored adequately? (b) Was dust generation below required thresholds? (c) Were equipment and	Met Requirements

vehicles maintained and operated in a manner to limit emissions? (d) Was organic waste collected and separated from non-organic waste for appropriate composting or recycling, as appropriate?	
Q2 Notes	Requirements were met.
Q3 – Special-Status Plants: Were impact avoidance and minimization requirements for special-status plants implemented adequately (e.g., avoiding sensitive areas)?	N/A
Q4 – Wildlife (Non-Avian): Were impact avoidance and minimization requirements for wildlife implemented adequately (e.g., avoiding sensitive areas, covering excavations, and inspecting equipment/trenches)?	Met Requirements
Q4 Notes	Requirements were met.
Q5 – Nesting and Burrowing Birds: (a) Were active nests and occupied burrows identified and monitored during applicable seasons, as required? (b) Were impact avoidance and minimization requirements for any active nests or occupied burrows implemented adequately?	N/A
Q6 – Water Features and Aquatic Habitat: Were water features avoided?	N/A
Q7 – Stormwater, Erosion, and Sediment Control: (a) Were erosion and sediment control BMPs in place and functioning properly? (b) Were inactive or completed work areas stabilized and/or restored adequately?	Met Requirements
Q7 Notes	Requirements were met.
Q8 – Invasive Weed Control: Were procedures to prevent the spread of invasive weeds implemented adequately?	Met Requirements
Q8 Notes	Requirements were met.
Q9 – Hazardous Materials and Waste Management: (a) Were hazardous materials stored and labeled properly? (b) Was hazardous material waste disposed of appropriately? (c) Were any spills or leaks addressed adequately? (d) Was solid waste collected and disposed of adequately?	Met Requirements
Q9 Notes	Requirements were met.
Q10 – Fire Management: (a) Were fire prevention procedures in place? (b) Was firefighting equipment available on site?	Met Requirements
Q10 Notes	Requirements were met.
Q11 – Cultural, Paleontological, and Tribal Resources: (a) Were cultural, paleontological, and tribal resources monitoring and impact avoidance occurring as required? (b) If potential resources or human remains were inadvertently discovered, were response procedures and protocols implemented as required?	Met Requirements
Q11 Notes	Requirements were met.
Q12 – Construction Noise: (a) Were noise minimization measures in place, as required? (b) If noise complaints were received, were they documented and addressed, as required?	Met Requirements
Q12 Notes	Requirements were met.
Q13 – Maintain Access: (a) Was access to driveways (e.g., businesses, schools, residences) maintained as required? (b) Was access to recreational areas maintained and appropriate signage installed? (c) Was pedestrian and bicycle access maintained, or were detours clearly defined?	Met Requirements
Q13 Notes	Requirements were met.
Q14 – Traffic Control (a) Were flaggers present at all times? (b) Were barriers, cones, and signs in place? (c) Were detours clearly marked?	Met Requirements
Q14 Notes	Requirements were met.
Q15 – Helicopter Use (a) Were helicopter use restrictions implemented adequately? (b) Were helicopter take-off and landing sites within prescribed limits?	N/A
Q16 – Worker Training and Communication: Have all workers on site received the required environmental trainings for the project?	Met Requirements
Q16 Notes	Requirements were met.
Q17 – MMCRP Implementation: (a) Were project activities consistent with the approved project as defined in the EIR and subsequent CPUC authorizations? (b) Were MMCRP procedures implemented adequately?	Met Requirements
Q17 Notes	Requirements were met.

2017-06-20 AM Inspection Report

SDG&E Sycamore-Peñasquitos 230-kV Transmission Line Project: Daily Inspection Report

Inspection Date	2017-06-20
Start Time	04:30:00
End Time	06:30:00
Monitor Name	Jerry Scott
Organization	The Sanberg Group (Sanberg)
Summary of Construction Activities	No construction work was in progress. There were only traffic safety vehicles on site, street sweepers, and the LEI.
Summary of Compliance Activities	Streets were returned to unrestricted public use. Equipment was cleared and parked in designated areas with cones and signage.
Were any issues encountered?	No

Photo Log

Photo



Caption BMPs in place.

Photo Attributes Capture Date/Time: Tue Jun 20 2017 06:00:55 GMT-0700 (PDT)
Coordinates: 32.889697, -117.202427
View Direction: West

Photo



Caption Drip pans in place.

Photo Attributes Capture Date/Time: Tue Jun 20 2017 05:59:57 GMT-0700 (PDT)
Coordinates: 32.889642, -117.202318
View Direction: East

Photo



Caption Steel plates covering vault.

Photo Attributes Capture Date/Time: Tue Jun 20 2017 05:58:26 GMT-0700 (PDT)
Coordinates: 32.889657, -117.202310
View Direction: Southwest

Photo



Caption Equipment safely stored and returned to unrestricted public access.

Photo Attributes Capture Date/Time: Tue Jun 20 2017 05:44:55 GMT-0700 (PDT)
 Coordinates: 32.892179, -117.153453
 View Direction: Southeast

Photo



Caption Digital signage in place.

Photo Attributes Capture Date/Time: Tue Jun 20 2017 05:42:17 GMT-0700 (PDT)
 Coordinates: 32.891108, -117.153360
 View Direction: Northeast

Daily Checklist

- | | |
|---|------------------------|
| Q1 – General Avoidance and Minimization: (a) Were the limits of work areas and access roads clearly marked? (b) Were construction activities limited to CPUC-approved work areas? | Met Requirements |
| Q1 Notes | Requirements were met. |
| Q2 – Air Quality/GHG: (a) Were dust avoidance and minimization requirements implemented and monitored adequately? (b) Was dust generation below required thresholds? (c) Were equipment | Met Requirements |

and vehicles maintained and operated in a manner to limit emissions? (d) Was organic waste collected and separated from non-organic waste for appropriate composting or recycling, as appropriate?

Q2 Notes	Requirements were met.
Q3 – Special-Status Plants: Were impact avoidance and minimization requirements for special-status plants implemented adequately (e.g., avoiding sensitive areas)?	N/A
Q4 – Wildlife (Non-Avian): Were impact avoidance and minimization requirements for wildlife implemented adequately (e.g., avoiding sensitive areas, covering excavations, and inspecting equipment/trenches)?	Met Requirements
Q4 Notes	Requirements met.
Q5 – Nesting and Burrowing Birds: (a) Were active nests and occupied burrows identified and monitored during applicable seasons, as required? (b) Were impact avoidance and minimization requirements for any active nests or occupied burrows implemented adequately?	N/A
Q6 – Water Features and Aquatic Habitat: Were water features avoided?	N/A
Q7 – Stormwater, Erosion, and Sediment Control: (a) Were erosion and sediment control BMPs in place and functioning properly? (b) Were inactive or completed work areas stabilized and/or restored adequately?	Met Requirements
Q7 Notes	Requirements were met.
Q8 – Invasive Weed Control: Were procedures to prevent the spread of invasive weeds implemented adequately?	Met Requirements
Q8 Notes	Requirements were met.
Q9 – Hazardous Materials and Waste Management: (a) Were hazardous materials stored and labeled properly? (b) Was hazardous material waste disposed of appropriately? (c) Were any spills or leaks addressed adequately? (d) Was solid waste collected and disposed of adequately?	Met Requirements
Q9 Notes	Requirements were met.
Q10 – Fire Management: (a) Were fire prevention procedures in place? (b) Was firefighting equipment available on site?	Met Requirements
Q10 Notes	Requirements were met.
Q11 – Cultural, Paleontological, and Tribal Resources: (a) Were cultural, paleontological, and tribal resources monitoring and impact avoidance occurring as required? (b) If potential resources or human remains were inadvertently discovered, were response procedures and protocols implemented as required?	Met Requirements
Q11 Notes	Requirements were met.
Q12 – Construction Noise: (a) Were noise minimization measures in place, as required? (b) If noise complaints were received, were they documented and addressed, as required?	Met Requirements
Q12 Notes	Requirements were met.
Q13 – Maintain Access: (a) Was access to driveways (e.g., businesses, schools, residences) maintained as required? (b) Was access to recreational areas maintained and appropriate signage installed? (c) Was pedestrian and bicycle access maintained, or were detours clearly defined?	Met Requirements
Q13 Notes	Requirements were met.
Q14 – Traffic Control (a) Were flaggers present at all times? (b) Were barriers, cones, and signs in place? (c) Were detours clearly marked?	Met Requirements
Q14 Notes	Requirements were met.
Q15 – Helicopter Use (a) Were helicopter use restrictions implemented adequately? (b) Were helicopter take-off and landing sites within prescribed limits?	N/A
Q16 – Worker Training and Communication: Have all workers on site received the required environmental trainings for the project?	Met Requirements
Q16 Notes	Requirements were met.
Q17 – MMCRP Implementation: (a) Were project activities consistent with the approved project as defined in the EIR and subsequent CPUC authorizations? (b) Were MMCRP procedures implemented adequately?	Met Requirements
Q17 Notes	Requirements were met.

2017-06-20 PM Inspection Report

SDG&E Sycamore-Peñasquitos 230-kV Transmission Line Project: Daily Inspection Report

Inspection Date	2017-06-20
Start Time	19:45:00
End Time	23:45:00
Monitor Name	Jerry Scott
Organization	The Sanberg Group (Sanberg)
Summary of Construction Activities	The crews were excavating, trenching, shoring, and backfilling. They removed and installed steel plates over vaults and trenches. Conduit was installed and asphalt work was done. Dump trucks hauled away fill to a designated site.
Summary of Compliance Activities	LEI, SDG&E representatives, inspectors, all monitors, and superintendent were on site. All crews had verified full Indian water tanks, round nose shovels, and polaskis, including equipment operators and potholing rigs.
Were any issues encountered?	No

Photo Log

Photo



Caption Fire prevention equipment inside the potholing rig.

Photo Attributes Capture Date/Time: Tue Jun 20 2017 21:23:56 GMT-0700 (PDT)
Coordinates: 32.888685, -117.165962
View Direction: Northwest

Photo



Caption Cones and signage in place.

Photo Attributes Capture Date/Time: Tue Jun 20 2017 20:33:24 GMT-0700 (PDT)
Coordinates: 32.888753, -117.163891
View Direction: Northwest

Photo



Caption Drip pans in place.

Photo Attributes Capture Date/Time: Tue Jun 20 2017 20:24:42 GMT-0700 (PDT)
Coordinates: 32.891506, -117.153450
View Direction: Southeast

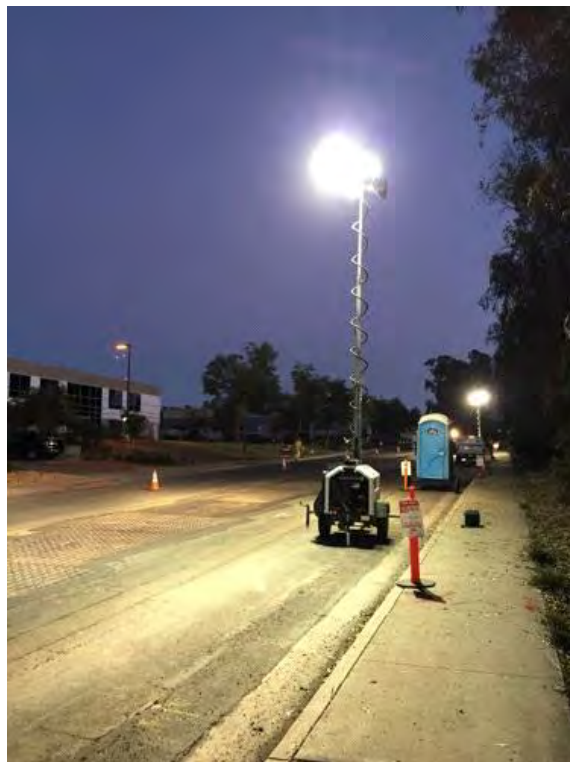
Photo



Caption BMPs in place and in good working order.

Photo Attributes Capture Date/Time: Tue Jun 20 2017 20:20:01 GMT-0700 (PDT)
 Coordinates: 32.890750, -117.153484
 View Direction: Northeast

Photo



Caption Lighting in place for the night's work.

Photo Attributes Capture Date/Time: Tue Jun 20 2017 20:12:22 GMT-0700 (PDT)
 Coordinates: 32.890531, -117.153535
 View Direction: Southeast

Daily Checklist	
Q1 – General Avoidance and Minimization: (a) Were the limits of work areas and access roads clearly marked? (b) Were construction activities limited to CPUC-approved work areas?	Met Requirements
Q1 Notes	Requirements were met.
Q2 – Air Quality/GHG: (a) Were dust avoidance and minimization requirements implemented and monitored adequately? (b) Was	Met Requirements

dust generation below required thresholds? (c) Were equipment and vehicles maintained and operated in a manner to limit emissions? (d) Was organic waste collected and separated from non-organic waste for appropriate composting or recycling, as appropriate?	
Q2 Notes	Requirements were met.
Q3 – Special-Status Plants: Were impact avoidance and minimization requirements for special-status plants implemented adequately (e.g., avoiding sensitive areas)?	N/A
Q4 – Wildlife (Non-Avian): Were impact avoidance and minimization requirements for wildlife implemented adequately (e.g., avoiding sensitive areas, covering excavations, and inspecting equipment/trenches)?	Met Requirements
Q4 Notes	Requirements were met.
Q5 – Nesting and Burrowing Birds: (a) Were active nests and occupied burrows identified and monitored during applicable seasons, as required? (b) Were impact avoidance and minimization requirements for any active nests or occupied burrows implemented adequately?	Met Requirements
Q5 Notes	Requirements were met.
Q6 – Water Features and Aquatic Habitat: Were water features avoided?	N/A
Q7 – Stormwater, Erosion, and Sediment Control: (a) Were erosion and sediment control BMPs in place and functioning properly? (b) Were inactive or completed work areas stabilized and/or restored adequately?	Met Requirements
Q7 Notes	Requirements were met.
Q8 – Invasive Weed Control: Were procedures to prevent the spread of invasive weeds implemented adequately?	Met Requirements
Q8 Notes	Requirements were met.
Q9 – Hazardous Materials and Waste Management: (a) Were hazardous materials stored and labeled properly? (b) Was hazardous material waste disposed of appropriately? (c) Were any spills or leaks addressed adequately? (d) Was solid waste collected and disposed of adequately?	Met Requirements
Q9 Notes	Requirements were met.
Q10 – Fire Management: (a) Were fire prevention procedures in place? (b) Was firefighting equipment available on site?	Met Requirements
Q10 Notes	All crews met the requirements.
Q11 – Cultural, Paleontological, and Tribal Resources: (a) Were cultural, paleontological, and tribal resources monitoring and impact avoidance occurring as required? (b) If potential resources or human remains were inadvertently discovered, were response procedures and protocols implemented as required?	Met Requirements
Q11 Notes	Requirements were met.
Q12 – Construction Noise: (a) Were noise minimization measures in place, as required? (b) If noise complaints were received, were they documented and addressed, as required?	Met Requirements
Q12 Notes	Requirements were met.
Q13 – Maintain Access: (a) Was access to driveways (e.g., businesses, schools, residences) maintained as required? (b) Was access to recreational areas maintained and appropriate signage installed? (c) Was pedestrian and bicycle access maintained, or were detours clearly defined?	Met Requirements
Q13 Notes	Requirements were met.
Q14 – Traffic Control (a) Were flaggers present at all times? (b) Were barriers, cones, and signs in place? (c) Were detours clearly marked?	Met Requirements
Q14 Notes	Requirements were met.
Q15 – Helicopter Use (a) Were helicopter use restrictions implemented adequately? (b) Were helicopter take-off and landing sites within prescribed limits?	N/A
Q16 – Worker Training and Communication: Have all workers on site received the required environmental trainings for the project?	Met Requirements
Q16 Notes	Requirements were met.
Q17 – MMCRP Implementation: (a) Were project activities consistent with the approved project as defined in the EIR and subsequent CPUC authorizations? (b) Were MMCRP procedures implemented adequately?	Met Requirements
Q17 Notes	Requirements were met.

2017-06-21 AM Inspection Report

SDG&E Sycamore-Peñasquitos 230-kV Transmission Line Project: Daily Inspection Report

Inspection Date	2017-06-21
Start Time	05:04:00
End Time	07:04:00
Monitor Name	Jerry Scott
Organization	The Sanberg Group (Sanberg)
Summary of Construction Activities	Crews installed conduit and asphalt work. Crews were excavating, trenching, shoring, and backfilling. Crews were potholing and sweeping. Dump trucks removed fill to a designated location. Streets were swept and end of shift.
Summary of Compliance Activities	LEI, all monitors, SDG&E representatives, inspectors, and superintendent were on site. All crews were checked thoroughly for filled Indian water cans, round nose shovels, and polaskis. All were in compliance.
Were any issues encountered?	No

Photo Log

Photo



Caption Steel plates covering excavations.

Photo Attributes Capture Date/Time: Wed Jun 21 2017 06:31:41 GMT-0700 (PDT)
Coordinates: 32.890758, -117.196254
View Direction: Southeast

Photo



Caption BMPs in place and in good working order.

Photo Attributes Capture Date/Time: Wed Jun 21 2017 06:20:05 GMT-0700 (PDT)
 Coordinates: 32.891678, -117.158667
 View Direction: Southeast

Photo



Caption Drip pans in place at Vulcan Staging Yard.

Photo Attributes Capture Date/Time: Wed Jun 21 2017 06:17:51 GMT-0700 (PDT)
 Coordinates: 32.891876, -117.158421
 View Direction: Northwest

Daily Checklist

Q1 – General Avoidance and Minimization: (a) Were the limits of work areas and access roads clearly marked? (b) Were construction activities limited to CPUC-approved work areas?

Met Requirements

Q1 Notes

All requirements were met.

Q2 – Air Quality/GHG: (a) Were dust avoidance and minimization requirements

Met Requirements

implemented and monitored adequately? (b) Was dust generation below required thresholds? (c) Were equipment and vehicles maintained and operated in a manner to limit emissions? (d) Was organic waste collected and separated from non-organic waste for appropriate composting or recycling, as appropriate?	
Q2 Notes	All requirements were met.
Q3 – Special-Status Plants: Were impact avoidance and minimization requirements for special-status plants implemented adequately (e.g., avoiding sensitive areas)?	N/A
Q4 – Wildlife (Non-Avian): Were impact avoidance and minimization requirements for wildlife implemented adequately (e.g., avoiding sensitive areas, covering excavations, and inspecting equipment/trenches)?	Met Requirements
Q4 Notes	All requirements were met.
Q5 – Nesting and Burrowing Birds: (a) Were active nests and occupied burrows identified and monitored during applicable seasons, as required? (b) Were impact avoidance and minimization requirements for any active nests or occupied burrows implemented adequately?	N/A
Q6 – Water Features and Aquatic Habitat: Were water features avoided?	N/A
Q7 – Stormwater, Erosion, and Sediment Control: (a) Were erosion and sediment control BMPs in place and functioning properly? (b) Were inactive or completed work areas stabilized and/or restored adequately?	Met Requirements
Q7 Notes	All requirements were met.
Q8 – Invasive Weed Control: Were procedures to prevent the spread of invasive weeds implemented adequately?	Met Requirements
Q8 Notes	All requirements were met.
Q9 – Hazardous Materials and Waste Management: (a) Were hazardous materials stored and labeled properly? (b) Was hazardous material waste disposed of appropriately? (c) Were any spills or leaks addressed adequately? (d) Was solid waste collected and disposed of adequately?	Met Requirements
Q9 Notes	All requirements were met.
Q10 – Fire Management: (a) Were fire prevention procedures in place? (b) Was firefighting equipment available on site?	Met Requirements
Q10 Notes	All requirements were met.
Q11 – Cultural, Paleontological, and Tribal Resources: (a) Were cultural, paleontological, and tribal resources monitoring and impact avoidance occurring as required? (b) If potential resources or human remains were inadvertently discovered, were response procedures and protocols implemented as required?	Met Requirements
Q11 Notes	All requirements were met.
Q12 – Construction Noise: (a) Were noise minimization measures in place, as required? (b) If noise complaints were received, were they documented and addressed, as required?	Met Requirements
Q12 Notes	All requirements were met.
Q13 – Maintain Access: (a) Was access to driveways (e.g., businesses, schools, residences) maintained as required? (b) Was access to recreational areas maintained and appropriate signage installed? (c) Was pedestrian and bicycle access maintained, or were detours clearly defined?	Met Requirements
Q13 Notes	All requirements were met.
Q14 – Traffic Control (a) Were flaggers present at all times? (b) Were barriers, cones, and signs in place? (c) Were detours clearly marked?	Met Requirements
Q14 Notes	All requirements were met.
Q15 – Helicopter Use (a) Were helicopter use restrictions implemented adequately? (b) Were helicopter take-off and landing sites within prescribed limits?	N/A
Q16 – Worker Training and Communication: Have all workers on site received the required environmental trainings for the project?	Met Requirements
Q16 Notes	All requirements were met.
Q17 – MMCRP Implementation: (a) Were project activities consistent with the approved project as defined in the EIR and subsequent CPUC authorizations? (b) Were MMCRP procedures implemented adequately?	Met Requirements
Q17 Notes	All requirements were met.

2017-06-22 PM Inspection Report

SDG&E Sycamore-Peñasquitos 230-kV Transmission Line Project: Daily Inspection Report

Inspection Date	2017-06-22
Start Time	20:45:00
End Time	23:20:00
Monitor Name	Korey Klutz
Organization	The Sanberg Group (Sanberg)
Summary of Construction Activities	Construction activities included potholing, trenching, conduit installation, and backfilling. Work sites included both ends of Carroll, Arjons Trade Street and a Trade Place.
Summary of Compliance Activities	All work was performed within CPUC-approved work limits. Monitors and the LEI were actively monitoring required activities.
Were any issues encountered?	No

Photo Log

Photo



Caption Trade Street

Photo Attributes Capture Date/Time: Thu Jun 22 2017 23:00:54 GMT-0700 (PDT)
Coordinates: 32.890771, -117.196539
View Direction: West

Photo



Caption Trenching on eastern portion of Carroll Rd.

Photo Attributes Capture Date/Time: Thu Jun 22 2017 23:00:10 GMT-0700 (PDT)
Coordinates: 32.890774, -117.196535
View Direction: South

Photo



Caption Trade Place trenching.

Photo Attributes Capture Date/Time: Thu Jun 22 2017 22:59:16 GMT-0700 (PDT)
Coordinates: 32.890745, -117.196582
View Direction: South

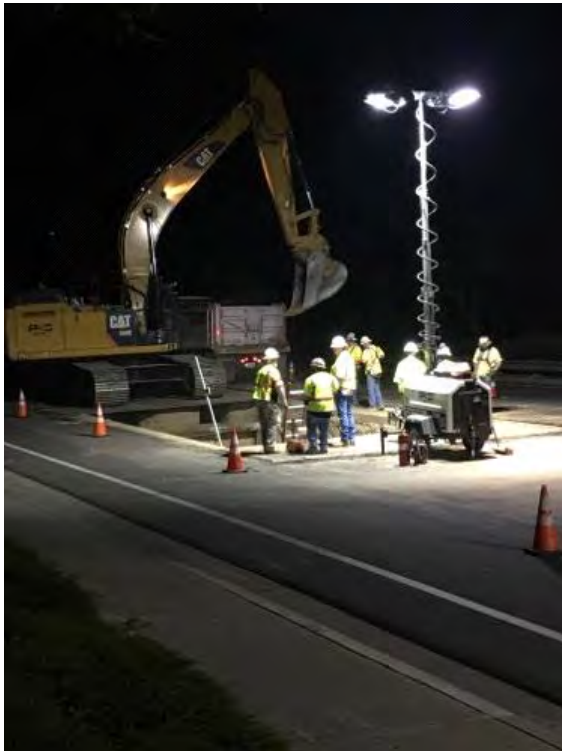
Photo



Caption Potholing on Carroll Rd. just east of Nancy Ridge Rd.

Photo Attributes Capture Date/Time: Thu Jun 22 2017 22:58:34 GMT-0700 (PDT)
Coordinates: 32.890805, -117.196594
View Direction: East

Photo



Caption Trenching western end of Carroll Rd.

Photo Attributes Capture Date/Time: Thu Jun 22 2017 22:57:52 GMT-0700 (PDT)
Coordinates: 32.890787, -117.196593
View Direction: East

Daily Checklist

Q1 – General Avoidance and Minimization: (a) Were the limits of work areas and access roads clearly marked? (b) Were construction activities limited to CPUC-approved work areas? Met Requirements

Q1 Notes

LEI onsite actively monitoring for compliance.

Q2 – Air Quality/GHG: (a) Were dust avoidance and minimization requirements implemented and monitored adequately? (b) Was dust generation below required thresholds? (c) Were equipment and vehicles maintained and operated in a manner to limit emissions? (d) Was organic waste collected and separated from non-organic waste for appropriate composting or recycling, as appropriate?	Met Requirements
Q3 – Special-Status Plants: Were impact avoidance and minimization requirements for special-status plants implemented adequately (e.g., avoiding sensitive areas)?	N/A
Q4 – Wildlife (Non-Avian): Were impact avoidance and minimization requirements for wildlife implemented adequately (e.g., avoiding sensitive areas, covering excavations, and inspecting equipment/trenches)?	N/A
Q5 – Nesting and Burrowing Birds: (a) Were active nests and occupied burrows identified and monitored during applicable seasons, as required? (b) Were impact avoidance and minimization requirements for any active nests or occupied burrows implemented adequately?	N/A
Q6 – Water Features and Aquatic Habitat: Were water features avoided?	N/A
Q7 – Stormwater, Erosion, and Sediment Control: (a) Were erosion and sediment control BMPs in place and functioning properly? (b) Were inactive or completed work areas stabilized and/or restored adequately?	Met Requirements
Q7 Notes	BMPs installed throughout active ROW
Q8 – Invasive Weed Control: Were procedures to prevent the spread of invasive weeds implemented adequately?	Met Requirements
Q9 – Hazardous Materials and Waste Management: (a) Were hazardous materials stored and labeled properly? (b) Was hazardous material waste disposed of appropriately? (c) Were any spills or leaks addressed adequately? (d) Was solid waste collected and disposed of adequately?	Met Requirements
Q10 – Fire Management: (a) Were fire prevention procedures in place? (b) Was firefighting equipment available on site?	Met Requirements
Q10 Notes	Fire tools observed throughout work areas including on all vehicles observed.
Q11 – Cultural, Paleontological, and Tribal Resources: (a) Were cultural, paleontological, and tribal resources monitoring and impact avoidance occurring as required? (b) If potential resources or human remains were inadvertently discovered, were response procedures and protocols implemented as required?	Met Requirements
Q11 Notes	Monitors on site actively monitoring trenching sites.
Q12 – Construction Noise: (a) Were noise minimization measures in place, as required? (b) If noise complaints were received, were they documented and addressed, as required?	Met Requirements
Q13 – Maintain Access: (a) Was access to driveways (e.g., businesses, schools, residences) maintained as required? (b) Was access to recreational areas maintained and appropriate signage installed? (c) Was pedestrian and bicycle access maintained, or were detours clearly defined?	Met Requirements
Q14 – Traffic Control (a) Were flaggers present at all times? (b) Were barriers, cones, and signs in place? (c) Were detours clearly marked?	Met Requirements
Q14 Notes	Safety/traffic implemented throughout active ROW work areas
Q15 – Helicopter Use (a) Were helicopter use restrictions implemented adequately? (b) Were helicopter take-off and landing sites within prescribed limits?	N/A
Q16 – Worker Training and Communication: Have all workers on site received the required environmental trainings for the project?	Met Requirements
Q17 – MMCRP Implementation: (a) Were project activities consistent with the approved project as defined in the EIR and subsequent CPUC authorizations? (b) Were MMCRP procedures implemented adequately?	Met Requirements

2017-06-23 AM Inspection Report

SDG&E Sycamore-Peñasquitos 230-kV Transmission Line Project: Daily Inspection Report

Inspection Date	2017-06-23
Start Time	05:45:00
End Time	07:02:00
Monitor Name	Korey Klutz
Organization	The Sanberg Group (Sanberg)
Summary of Construction Activities	Work from the previous night was completed and all traffic control measures were removed. Equipment was properly stored at staging areas and Yards.
Summary of Compliance Activities	No monitors were required as work was completed.
Were any issues encountered?	No

Photo Log

Photo



Caption BMPs Vulcan Staging Yard.

Photo Attributes Capture Date/Time: Fri Jun 23 2017 07:00:16 GMT-0700 (PDT)
Coordinates: 32.891525, -117.158774
View Direction: North

Photo



Caption Vulcan Staging Yard.

Photo Attributes Capture Date/Time: Fri Jun 23 2017 06:59:00 GMT-0700 (PDT)
Coordinates: 32.891887, -117.158287
View Direction: Southwest

Photo



Caption Fire equipment at Vulcan Staging Yard.

Photo Attributes Capture Date/Time: Fri Jun 23 2017 06:53:00 GMT-0700 (PDT)
Coordinates: 32.891720, -117.158667
View Direction: West

Photo



Caption Vulcan Staging Yard.

Photo Attributes Capture Date/Time: Fri Jun 23 2017 06:52:12 GMT-0700 (PDT)
Coordinates: 32.891880, -117.158688
View Direction: East

Photo



Caption Trade Place

Photo Attributes Capture Date/Time: Fri Jun 23 2017 06:32:53 GMT-0700 (PDT)
Coordinates: 32.890411, -117.153355
View Direction: North

Photo



Carroll Rd. work site with asphalt rock debris.

Photo Attributes Capture Date/Time: Fri Jun 23 2017 06:20:57 GMT-0700 (PDT)
Coordinates: 32.885050, -117.170945
View Direction: East

Photo



Carroll Rd. work site.

Photo Attributes Capture Date/Time: Fri Jun 23 2017 06:16:34 GMT-0700 (PDT)
Coordinates: 32.885385, -117.169381
View Direction: Southwest

Photo



Caption Arjons work area.

Photo Attributes Capture Date/Time: Fri Jun 23 2017 06:11:54 GMT-0700 (PDT)
 Coordinates: 32.893880, -117.151644
 View Direction: West

Daily Checklist

Q1 – General Avoidance and Minimization: (a) Were the limits of work areas and access roads clearly marked? (b) Were construction activities limited to CPUC-approved work areas?	Met Requirements
Q1 Notes	Work was complete from the previous night. Traffic flowing normally through ROW.
Q2 – Air Quality/GHG: (a) Were dust avoidance and minimization requirements implemented and monitored adequately? (b) Was dust generation below required thresholds? (c) Were equipment and vehicles maintained and operated in a manner to limit emissions? (d) Was organic waste collected and separated from non-organic waste for appropriate composting or recycling, as appropriate?	Met Requirements
Q3 – Special-Status Plants: Were impact avoidance and minimization requirements for special-status plants implemented adequately (e.g., avoiding sensitive areas)?	N/A
Q4 – Wildlife (Non-Avian): Were impact avoidance and minimization requirements for wildlife implemented adequately (e.g., avoiding sensitive areas, covering excavations, and inspecting equipment/trenches)?	N/A
Q5 – Nesting and Burrowing Birds: (a) Were active nests and occupied burrows identified and monitored during applicable seasons, as required? (b) Were impact avoidance and minimization requirements for any active nests or occupied burrows implemented adequately?	N/A
Q6 – Water Features and Aquatic Habitat: Were water features avoided?	N/A
Q7 – Stormwater, Erosion, and Sediment Control: (a) Were erosion and sediment control BMPs in place and functioning properly? (b) Were inactive or completed work areas stabilized and/or restored adequately?	Met Requirements
Q8 – Invasive Weed Control: Were procedures to prevent the spread of invasive weeds implemented adequately?	Met Requirements
Q9 – Hazardous Materials and Waste Management: (a) Were hazardous materials stored and labeled properly? (b) Was hazardous material waste disposed of appropriately? (c) Were any spills or leaks addressed adequately? (d) Was solid waste collected and disposed of adequately?	Met Requirements
Q10 – Fire Management: (a) Were fire prevention procedures in place? (b) Was firefighting equipment available on site?	Met Requirements
Q11 – Cultural, Paleontological, and Tribal Resources: (a) Were	Met Requirements

cultural, paleontological, and tribal resources monitoring and impact avoidance occurring as required? (b) If potential resources or human remains were inadvertently discovered, were response procedures and protocols implemented as required?

Q12 – Construction Noise: (a) Were noise minimization measures in place, as required? (b) If noise complaints were received, were they documented and addressed, as required? Met Requirements

Q13 – Maintain Access: (a) Was access to driveways (e.g., businesses, schools, residences) maintained as required? (b) Was access to recreational areas maintained and appropriate signage installed? (c) Was pedestrian and bicycle access maintained, or were detours clearly defined? Met Requirements

Q14 – Traffic Control (a) Were flaggers present at all times? (b) Were barriers, cones, and signs in place? (c) Were detours clearly marked? Met Requirements

Q15 – Helicopter Use (a) Were helicopter use restrictions implemented adequately? (b) Were helicopter take-off and landing sites within prescribed limits? N/A

Q16 – Worker Training and Communication: Have all workers on site received the required environmental trainings for the project? Met Requirements

Q17 – MMCRP Implementation: (a) Were project activities consistent with the approved project as defined in the EIR and subsequent CPUC authorizations? (b) Were MMCRP procedures implemented adequately? Met Requirements