

3.15 RECREATION

3.15 RECREATION

3.15.1 Environmental Setting

Overview

The City of San Clemente and California Department of Parks and Recreation manage recreational facilities in the proposed project area. Facilities include local and state parks, trails, a golf course, and beaches. Table 3.15-1 includes a summary of all public recreational facilities within 1,000 feet of the proposed project area. Recreational facilities near the proposed project area are shown on Figure 3.15-1 and Figure 3.15-2.

City of San Clemente Recreational Facilities

The City of San Clemente Beach, Parks, and Recreation Department oversees 324 acres of recreational space including 21 parks, 13.8 miles of hiking trails, 2 miles of public beaches, and the San Clemente Municipal Golf Course (City of San Clemente 2016a). Of these facilities, four parks, the municipal golf course, two hiking trails, and several bicycle routes are located within 1,000 feet of the proposed project area, and several trails are located within proposed access roads.

California Department of Parks and Recreation Facilities

The California Department of Parks and Recreation maintains a 2,000-acre lease agreement with the DoN to provide public access and recreational opportunities year-round at San Onofre State Beach. The lease includes over 4 miles of beach, approximately 25 percent of MCB CPEN's coastline (MCB CPEN 2012). The lease agreement expires in 2021 (California Department of Parks and Recreation 2016a). San Onofre State Beach can be temporarily closed during training exercises at MCB CPEN in accordance with Part II, Article L of the lease agreement.

Table 3.15-1 Public Recreational Facilities within 1,000 Feet of the Proposed Project

Facility	Jurisdiction/ Management	Features	Approximate Distance from Proposed Project (feet)
Prima Deshecha South Trail	City of San Clemente	<ul style="list-style-type: none"> • 3.1-mile hiking trail 	0: Trail would be used as an access road
Cristianitos South Trail	City of San Clemente	<ul style="list-style-type: none"> • 2.8-mile hiking trail 	0: Access to Talega staging yards would cross this trail
Rancho San Clemente Trail	City of San Clemente	<ul style="list-style-type: none"> • 3.5-mile hiking and biking trail 	535
San Clemente Municipal Golf Course	City of San Clemente	<ul style="list-style-type: none"> • 18-hole golf course • Golf shop • Driving range 	35

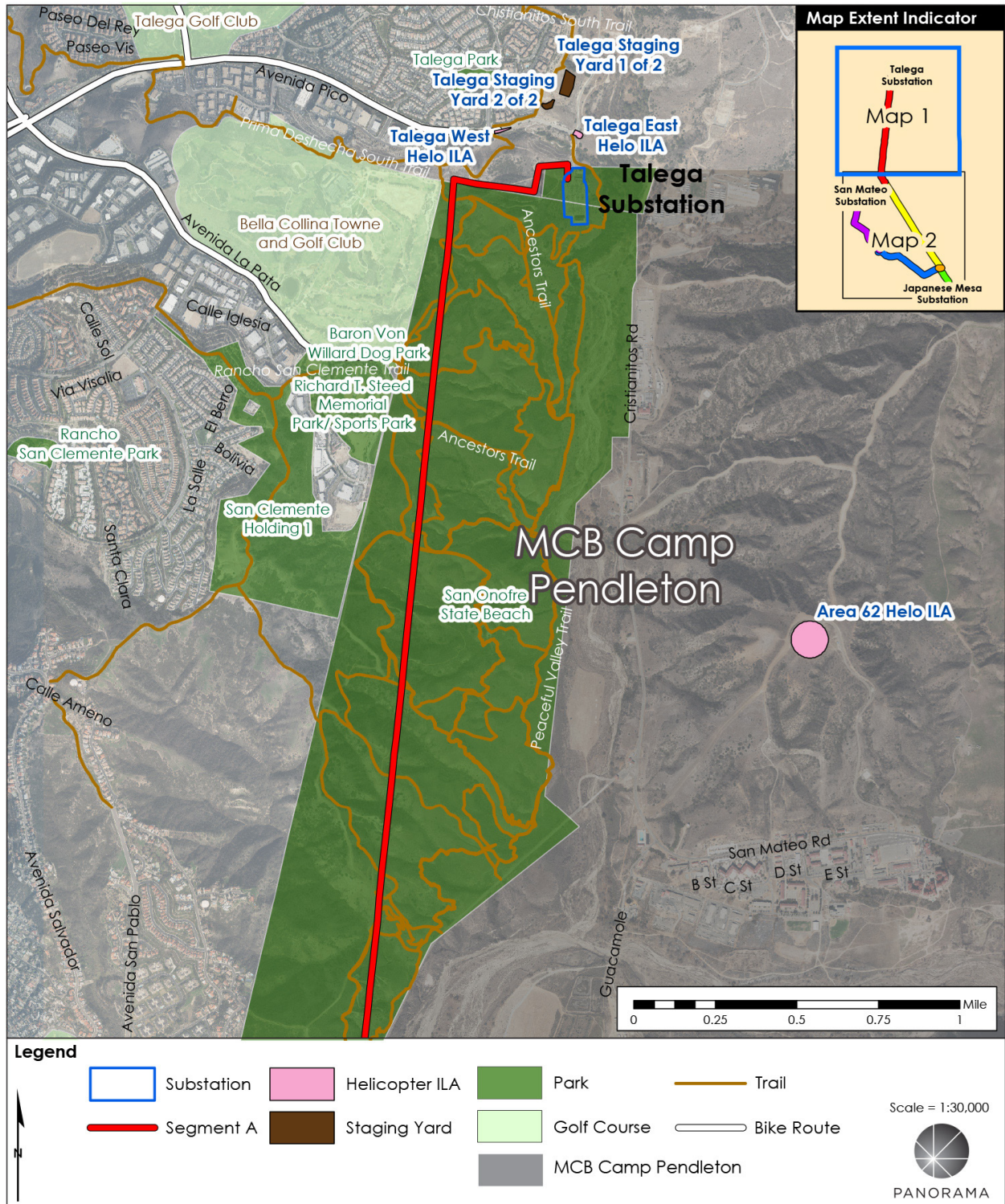
3.15 RECREATION

Facility	Jurisdiction/ Management	Features	Approximate Distance from Proposed Project (feet)
Talega Park	City of San Clemente	<ul style="list-style-type: none"> • Baseball/softball field • Basketball court • BBQ/fire ring • Play structure • Multi-purpose/soccer field • Picnic tables 	700
Richard T. Steed Memorial Park	City of San Clemente	<ul style="list-style-type: none"> • Baseball/softball field • Basketball court • BBQ/fire ring • Play structure • Multi-purpose/soccer field • Picnic tables • Tennis court 	570
Vista Bahia Park	City of San Clemente	<ul style="list-style-type: none"> • Baseball/softball field • Play structure • Picnic tables 	45
Baron Von Willard Dog Park	City of San Clemente	<ul style="list-style-type: none"> • Off-leash dog park 	650
San Onofre State Beach	California Department of Parks and Recreation	<ul style="list-style-type: none"> • Park supports surfing, windsurfing, swimming, sunbathing, camping, RV camping, kayaking, birding/wildlife viewing, fishing, biking, hiking • Trestles, Church, Trails, and Surf Beaches • Ancestors' Trail, Peaceful Valley Trail, Panhe Trail, and associated trail network • San Mateo and San Onofre Bluffs Campgrounds • 160-acre Trestles Natural Wetland Preserve 	0: Approximately one third of the proposed project is located within San Onofre State Beach
Pacific Coast Bicycle Route (Old US-101)	MCB CPEN	<ul style="list-style-type: none"> • 20-mile road bicycle path between Oceanside and San Clemente 	385

Sources: (City of San Clemente 2016a, California Department of Parks and Recreation 2016b, City of San Clemente 2016b)

3.15 RECREATION

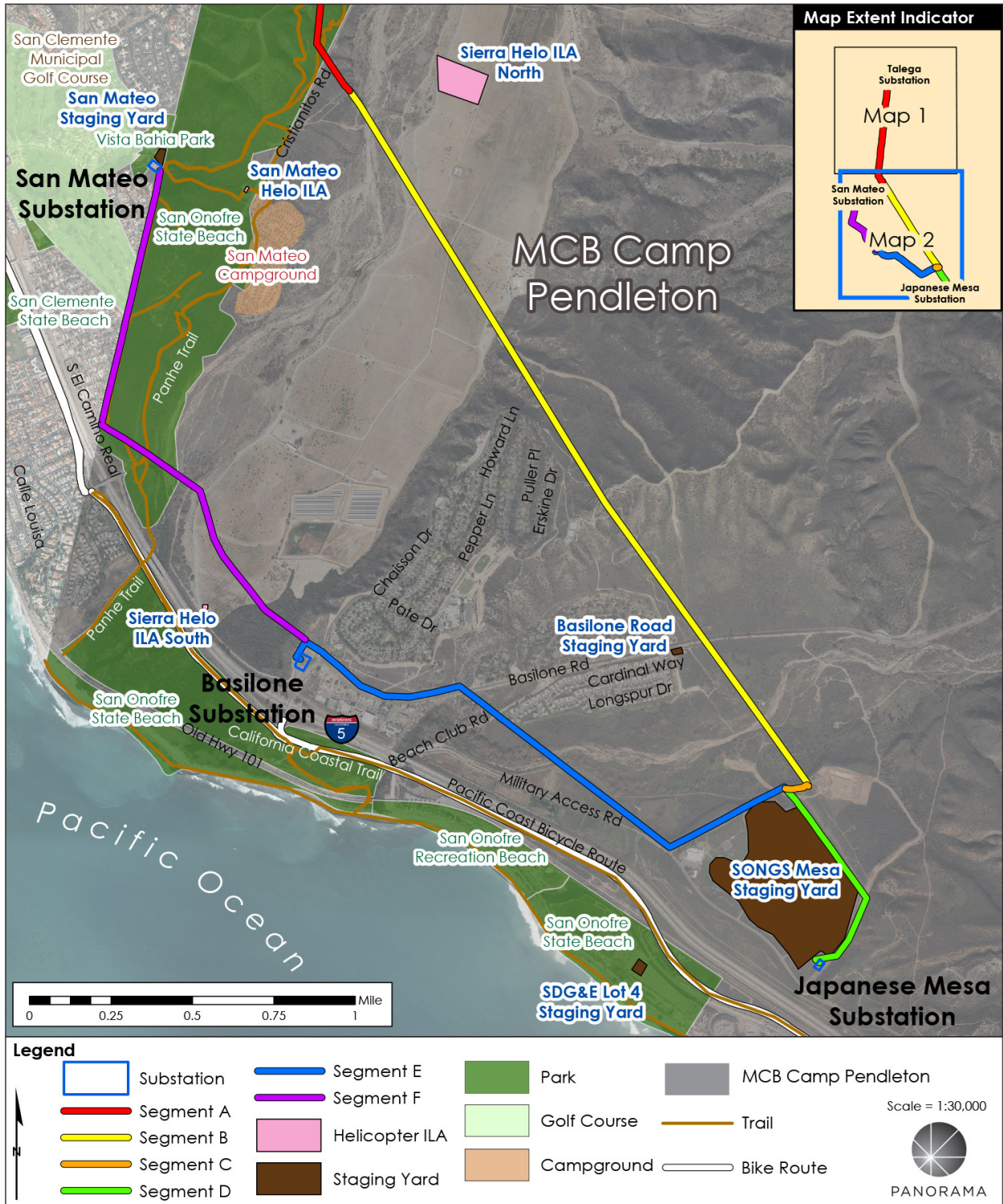
Figure 3.15-1 Public Recreational Facilities near the Proposed Project (Map 1 of 2)
(Revised)



Sources: (GreenInfo Network 2015, SANDAG 2016, California Department of Parks and Recreation 2010, Mountain Bike Bill 2008)

3.15 RECREATION

Figure 3.15-2 Public Recreational Facilities near the Proposed Project (Map 2 of 2)
(Revised)



Sources: (GreenInfo Network 2015, SANDAG 2016, California Department of Parks and Recreation 2010, Mountain Bike Bill 2008)

3.15 RECREATION

San Onofre State Beach is one of California’s top five most-visited state parks; nearly 2.5 million people visit San Onofre State Beach every year (California Department of Parks and Recreation 2016b). Visitors come to swim, sunbathe, camp, and compete in or view surfing competitions among other recreational activities. Several hiking trails in the northern portion of San Onofre State Beach cross Segment A of the proposed project. The San Mateo Campground is located across the street from the proposed San Mateo Helo ILA.

Marine Corps Base Camp Pendleton Recreational Facilities

MCB CPEN offers recreational opportunities (outside of San Onofre State Beach) to military personnel and members of the public. “Recreational activities are only allowed in areas not being used for military training, and when security, management decisions, and natural resources and fire conditions allow” (MCB CPEN 2012). In addition to San Onofre State Beach, the public has access to fishing at Del Mar Harbor (as well as other ocean waters if escorted by a military or U.S. Department of Defense sponsor), outdoor races (e.g., bicycling, runs, marathons), and bicycling along Old US-101 (MCB CPEN 2012). Active duty, retired military personnel, Red Cross employees who are required to reside at MCB CPEN, and their family members, as well as civilian employees who reside at MCB CPEN, have access to all recreational facilities at the military base.

3.15.2 Applicant Proposed Measures

SDG&E has proposed measures to reduce environmental impacts. Several APMs proposed by SDG&E have been revised or superseded with mitigation measures to address environmental impacts. Table 3.15-2 provides the APM proposed to reduce impacts on recreation. This APM has not been revised or superseded by mitigation measures.

Table 3.15-2 Applicant Proposed Measures for Recreation

Applicant Proposed Measure	Revised or Superseded?
APM REC-01: Construction Notification. Signage will be posted at least four weeks prior to the start of construction in parks and near trails that are adjacent to or cross the Proposed Project. The signage will describe the location and duration of construction activities. The signage will also include contact information for the Proposed Project’s public liaison. Recreational managers will also be notified in advance to coordinate at least four weeks prior to the beginning of construction.	No revisions.

3.15.3 Impact Analysis

Summary of Impacts

Table 3.15-3 presents a summary of the CEQA significance criteria and impacts on recreation that would occur during construction, operation, and maintenance of the proposed project.

3.15 RECREATION

Table 3.15-3 Summary of Proposed Project Impacts on Recreation

Would the Proposed Project:	Potentially Significant Impact	Less than Significant Impact with Mitigation Incorporated	Less than Significant Impact	No Impact
a) Increase the use of existing neighborhood and regional parks or other recreational facilities such that substantial physical deterioration of the facility would occur or be accelerated?	<input type="checkbox"/>	<input checked="" type="checkbox"/>	<input type="checkbox"/>	<input type="checkbox"/>
b) Include recreational facilities or require the construction or expansion of recreational facilities which might have an adverse physical effect on the environment?	<input type="checkbox"/>	<input type="checkbox"/>	<input type="checkbox"/>	<input checked="" type="checkbox"/>

Impact Discussion

a) Would the proposed project increase the use of existing neighborhood and regional parks or other recreational facilities such that substantial physical deterioration of the facility would occur or be accelerated?	Significance Determination
	Less than significant with mitigation

Construction

The proposed project would not directly or indirectly induce growth in the area (refer to Section 3.13: Population and Housing) and would therefore not increase use of neighborhood or regional recreational facilities that would result in deterioration of those facilities. No impact would occur from increased use of recreational facilities.

Access to recreational trails and facilities within the City of San Clemente and California Department of Parks and Recreation lease area on MCB CPEN (i.e., San Onofre State Beach) could be temporarily restricted during construction. Trails within San Clemente and MCB CPEN would be used as access roads during construction. Pole structure removal and installation would occur directly adjacent to or within recreational trails on MCB CPEN, and conductor stringing would occur over recreational trails within MCB CPEN. Access to one trail immediately adjacent to the Talega Helo West ILA could also be restricted for safety purposes. Trail closures could last minutes to days depending on the construction activity. Temporary closures for construction vehicle access are not expected to take more than an hour over the course of a day; conversely, closures for pole installation adjacent to trails could take between one and five days, though the maximum duration could be increased to 10 days if rock is encountered and/or construction activities are delayed by inclement weather, MCB CPEN training exercises, or other unforeseeable factors.

Trail and pole work site closures would temporarily affect park use. With a yearly average of nearly 2.5 million visitors to San Onofre State Beach, the temporary closure of multiple trail segments and pole work sites over the 8-month construction period could be a significant

3.15 RECREATION

impact. SDG&E would implement APM REC-01, which requires notifying recreational managers of parks affected by construction activities and posting notices at recreational areas near the proposed project. APM REC-01 does not specify requirements to maintain public access, and temporary trail closures could still result in significant recreational impacts after implementation of APM REC-01. MM Recreation-1 requires SDG&E to create trail detours where feasible, provide advanced notification of trail closures to the public, and coordinate with the City of San Clemente and California Department of Parks and Recreation prior to temporary closures. Flaggers would be stationed at overhead stringing locations and near the Talega Helo West ILA to direct trail users when it is safe to pass. Impacts would be less than significant with mitigation.

Construction traffic and access road grading could potentially damage trails and access roads that are used for hiking and mountain biking within San Onofre State Beach. Grading, earthwork activities, and construction equipment travel on access roads that function as trails could cause physical deterioration of trails (e.g., rutting), which would be a significant impact. MM Biology-14 would require SDG&E to keep access roads clear of project equipment and materials when not in active use. MM Traffic-4 also requires formulation and implementation of a traffic control plan in the event that trails or other access roads are closed to public use. Impacts on trails within San Onofre State Beach would be less than significant with incorporation of mitigation.

SDG&E would also utilize approximately 1 mile of City of San Clemente trails located near Talega Substation to access work areas. Access road/trail repair would not be required; therefore, impacts from construction traffic and access road grading on City of San Clemente trails could be significant if the trails were deteriorated enough to make use unsafe. MM Recreation-2 requires SDG&E to repair any trail damage caused by construction activities to approximate pre-construction conditions. Impacts on recreational facilities would be less than significant with mitigation.

Operation and Maintenance

Operation and maintenance of the proposed project would not increase the use of any recreational facilities, because operation and maintenance of the project would not create any permanent employment opportunities, and would not increase the population of the area (refer to Section 3.13: Population and Housing). The proposed project would not have any impact associated with population growth on the use of recreational facilities.

Inspection and maintenance activities for the proposed project would be comparable to inspection and maintenance activities for the existing TL 695 and TL 6971 power lines. No impact would occur.

Mitigation Measures: MM Recreation-1, MM Recreation-2, MM Biology-14 (refer to Section 3.4: Biological Resources), and MM Traffic-4 (refer to Section 3.16: Transportation and Traffic)

3.15 RECREATION

b) Would the proposed project include recreational facilities or require the construction or expansion of recreational facilities which might have an adverse physical effect on the environment?	Significance Determination
	No impact

Construction

The project would not include the construction or expansion of any permanent recreational facilities. No impact would occur from the construction or expansion of recreational facilities.

Operation and Maintenance

Operation and maintenance would not involve the construction or expansion of recreation facilities. No impact would occur.

Mitigation Measures: None required.

3.15.4 Mitigation Measures

MM Recreation-1: Trail Detours and Notifications

If construction activities require temporary closure of trails or SDG&E access roads that function as trails within public use areas, SDG&E shall provide temporary trail detours for trail users. SDG&E shall post signs at trail entrances, informational kiosks, appropriate trail intersections, and parking areas to inform trail users of construction activities and temporary trail detours at least four weeks prior to the start of construction in recreational areas. SDG&E shall provide temporary trail detours using existing trails and roads that are not marked for closure by California Department of Parks and Recreation, MCB CPEN, or City of San Clemente. Alternatively, SDG&E may place alternate access routes on the perimeter of project work areas in areas that have been surveyed and are free of sensitive biological and cultural resources. To avoid trail closures during overhead wire stringing, SDG&E shall position a flag person (similar to traffic controllers) at each trail crossing location to direct trail users when it is safe to pass. To avoid trail closures at the trail entrance adjacent to the Talega Helo West ILA, SDG&E shall position a flag person during active helicopter operations as needed to direct trail users when it is safe to pass. SDG&E shall coordinate the temporary closure of any trails with the appropriate park official at least 30 days prior to temporary trail closure.

Applicable Locations: Trails and access roads within recreational areas

Performance Standards and Timing:

Before Construction:

- (1) SDG&E coordinates with park officials prior to temporary trail closures
- (2) Temporary trail detours on existing trails and roads are provided
- (3) Trail detour signs are posted in recreational areas

During Construction:

A flag person is positioned as needed during active helicopter operations

After Construction: N/A

3.15 RECREATION

MM Recreation-2: Pre- and Post-Project Trail Condition Report

SDG&E shall prepare a Pre-Project Trail Condition Report prior to construction that documents the condition of City of San Clemente trails located within project access roads. The Pre-Project Trail Condition Report shall be submitted to the CPUC 30 days prior to construction. SDG&E shall repair all damage to City of San Clemente trails (e.g., rutting) caused by construction vehicles and equipment by the completion of construction to the satisfaction of the City of San Clemente. SDG&E shall prepare a Post-Project Trail Condition Report documenting the final state of all City of San Clemente trails within project access roads. The Post-Project Trail Condition Report shall be submitted to the CPUC within 90 days of construction completion.

Applicable Locations: All trails [in the City of San Clemente](#) used for access

Performance Standards and Timing:

Before Construction: A Pre-Project Trail Condition Report is submitted to the CPUC

During Construction: Damaged City of San Clemente trails are repaired

After Construction: A Post-Project Trail Conditions Report is submitted to the CPUC

3.15.5 References

California Department of Parks and Recreation. 2010. "San Onofre State Beach." San Onofre State Beach Park Brochure. Accessed September 27, 2016.

<https://www.parks.ca.gov/pages/647/files/SanOnofreFinalWebLayout092710.pdf>.

—. 2016a. San Onofre Foundation. Accessed September 21, 2016.

https://www.parks.ca.gov/?page_id=26069.

—. 2016b. San Onofre State Beach. Accessed September 20, 2016.

https://www.parks.ca.gov/?page_id=647.

City of San Clemente. 2016a. Beaches, Parks & Recreation. Accessed September 20, 2016.

<http://san-clemente.org/recreation-community>.

—. 2016b. Parks & Ball Fields. Accessed September 20, 2016. <http://san-clemente.org/recreation-community/parks-ball-fields>.

GreenInfo Network. 2015. California Protected Areas Data Portal. <http://www.calands.org/>.

MCB CPEN. 2012. "Integrated Natural Resources Management Plan, Chapter 5: Public Access, Natural Resources Related Recreation, and Education." February.

Mountain Bike Bill. 2008. The San Clemente Single Tracks Map. November 3. Accessed September 27, 2016.

<http://www.mountainbikebill.com/images/Trails/SCST/SanClementeMap-8-14.JPG>.

SANDAG. 2016. Regional GIS Data Warehouse.

<http://sandag.org/index.asp?subclassid=100&fuseaction=home.subclasshome>.

3.15 RECREATION

This page is intentionally left blank.