

**TABLE OF CONTENTS**

**4.15 RECREATION .....4.15-1**

4.15.1 Introduction .....4.15-1

4.15.2 Regulatory Setting .....4.15-1

4.15.3 Existing Conditions .....4.15-2

4.15.4 Applicant Proposed Measures .....4.15-6

4.15.5 Potential Impacts .....4.15-7

4.15.6 References .....4.15-9

**LIST OF FIGURES**

4.15-1 Recreational Facilities.....4.15-3

**LIST OF TABLES**

4.15-1 Recreational Resources within the Vicinity of the Proposed Project .....4.15-5

THIS PAGE IS INTENDED TO BE LEFT BLANK

**4.15 RECREATION**

Would the project:		Potentially Significant Impact	Less than Significant with Mitigation Incorporated	Less than Significant Impact	No Impact
a.	Increase the use of existing neighborhood and regional parks or other recreational facilities such that substantial physical deterioration of the facility would occur or be accelerated?	<input type="checkbox"/>	<input type="checkbox"/>	<input checked="" type="checkbox"/>	<input type="checkbox"/>
b.	Include recreational facilities or require the construction or expansion of recreational facilities which might have an adverse physical effect on the environment?	<input type="checkbox"/>	<input type="checkbox"/>	<input type="checkbox"/>	<input checked="" type="checkbox"/>

**4.15.1 Introduction**

This section of the PEA describes the existing conditions and potential project-related impacts to recreation in the vicinity of the Proposed Project. The analysis concludes that less than significant impacts related to recreation will occur. The Proposed Project’s potential effects on this resource were evaluated using the significance criteria set forth in Appendix G of the CEQA Guidelines. The conclusions are summarized in the checklist above, and discussed in more detail in Section 4.15.6.

**4.15.2 Regulatory Setting**

**4.15.2.1 Federal**

**Marine Corps Order (MCO) P5090.2A, Environmental Compliance and Protection Manual**

Although public access is generally restricted, with respect to recreational opportunities, MCO 5090.2A, Environmental Compliance and Protection Manual, specifies that installations shall provide the public access to natural resources, provided such access is consistent with natural resources and military readiness preservation (Headquarters Marine Corps 2013).

**4.15.2.2 State**

**Agreement of Lease between the State of California Department of Parks and Recreation and the United States of America**

The California State Park Lease Areas are publically accessible recreational facilities located within the boundaries of MCB Camp Pendleton. These areas were established under the terms of a lease agreement between the federal government and the California Department of Parks and Recreation. The lease covers the San Onofre State Beach, which is comprised of Trestles Beach, Surf Beach, San Onofre Bluffs and San Mateo Campground. The Proposed Project crosses the northerly portion of San Onofre State Beach.

**4.15.2.3 Local**

As provided in CPUC General Order 131-D, the CPUC preempts local discretionary authority over the location and construction of electrical utility facilities. The following discussion of relevant local land use plans and policies that pertain to recreation is provided below for informational purposes.

### **City of San Clemente Centennial General Plan**

The City's Centennial General Plan was developed to guide land use and community decisions throughout the City of San Clemente through the year 2028 (City of San Clemente 2014). The Beaches, Parks, and Recreation Element of the General Plan has the following primary goal:

to create and maintain safe, well-designed and high quality parks and recreational facilities and programs that meet a wide range of local recreational, fitness and enrichment needs, and that promote community health and well-being.

The City has an additional goal:

to establish a network of parks, beaches and other recreational facilities that are both beautiful and functional; that reflect high standards of design and aesthetic quality.

The San Mateo Staging Yard is located adjacent to the Vista Bahia Park in San Clemente.

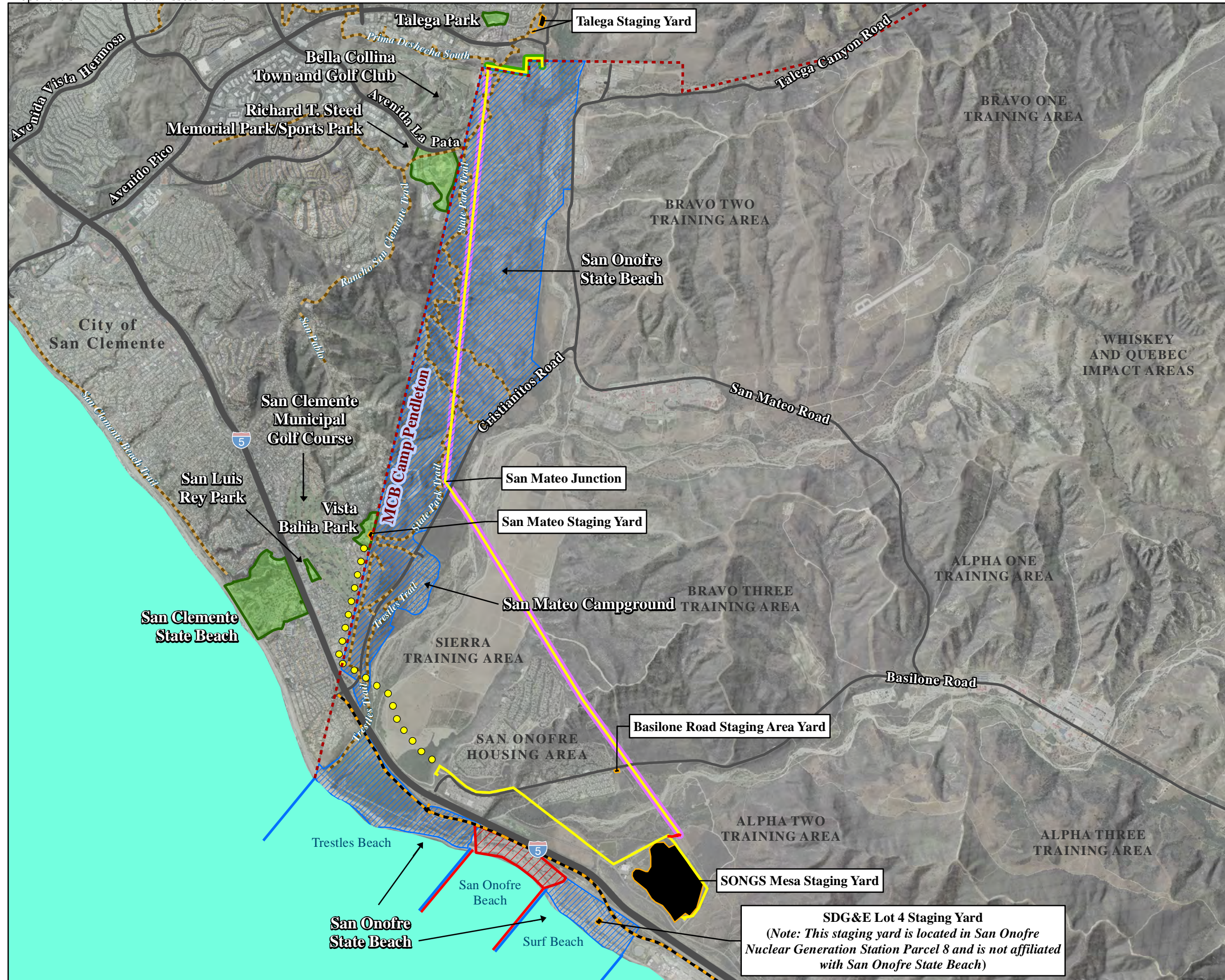
### **4.15.3 Existing Conditions**

#### **4.15.3.1 Existing Setting**

The proposed construction areas (i.e., staging yards, locations where existing wood structures will be removed and new steel structures will be installed, stringing sites, and the trench for underground wire installation) occur within or adjacent to various recreational facilities (Figure 4.15-1, Recreational Facilities and Table 4.15-1, Recreational Resources within the Vicinity of the Proposed Project). These facilities are fully accessible by the public within various areas of the City of San Clemente, and with more varied and limited public access within the MCB Camp Pendleton boundary.

#### **MCB Camp Pendleton**

MCB Camp Pendleton Marine Corps Community Services (MCCS) group provides MCB Camp Pendleton with fitness and recreational programs in support of personnel and their families. MCB Camp Pendleton has policies in place that support use of the Department of Defense (DoD) property for recreational purposes when use does not conflict with mission, security, and safety requirements (MCB Camp Pendleton 2012). Active duty and retired military personnel and their families have access to all recreational facilities and resources within the installation boundary. Reserve Officers' training Corps members who are training or visiting the MCB Camp Pendleton area are restricted from using Del Mar and San Onofre Beach cottages. Recreational activities on MCB Camp Pendleton property are only allowed in areas not being used for military training, and when security, management decisions, and natural resources and fire conditions allow.

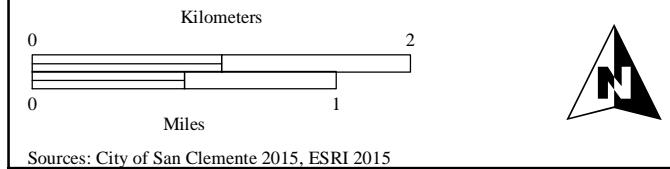


**SDG&E Lot 4 Staging Yard**  
 (Note: This staging yard is located in San Onofre Nuclear Generation Station Parcel 8 and is not affiliated with San Onofre State Beach)

**Figure 4.15-1  
 Recreational Facilities**

**LEGEND**

- - - MCB Camp Pendleton Boundary
- Proposed Project Reconductor Route
- Proposed Project Underground Route
- Proposed Power Line Removal Segment
- Staging Yard
- Bicycle Route
- Hiking/Biking Trail
- Marine Corps Community Service Recreation Facility
- State Parks Lease Area
- Other State or Local Park
- Existing Utility Corridor Also Containing Other SDG&E Facilities (138kV and 230kV)
- Existing Utility Corridor Also Containing Other SDG&E Facilities (138kV and 230kV) and SCE Facilities



Sources: City of San Clemente 2015, ESRI 2015

THIS PAGE IS INTENDED TO BE LEFT BLANK

**Table 4.15-1. Recreational Resources within the Vicinity of the Proposed Project**

Recreational Resource	Jurisdiction/Management	Major Recreational Attributes
San Onofre Beach	MCCS	Provides beach cottages, campsites, and recreational vehicle/camper utility hook-ups to Department of Defense-affiliated patrons.
Coastal Bicycle Route	MCB Camp Pendleton	North/south route that runs parallel to Interstate 5 between Oceanside and San Clemente.
San Onofre State Beach	California Department of Parks and Recreation	Surfing, five hiking trails, camping (see description of San Mateo and San Onofre Bluffs campgrounds below), and special events (surfing competitions, junior Ranger programs, beach clean-ups, and Earth Day celebrations). San Onofre State Beach includes San Mateo Campground, San Onofre Bluffs Campground, the Trestles Beach and Surf Beach surfing areas, and various trails providing access to these facilities.
San Clemente State Beach	California Department of Parks and Recreation	Beach and water activities (picnicking, surfing, swimming), surf-fishing (bass, croaker, corvine, and barred perch fished only by hand with fishing license required), recreational trails (Natural Trail and Butterfly Trail), and camping (160 camp sites).
Talega Park	City of San Clemente	Baseball/softball field, basketball court, BBQ/fire ring/ children's play area, multipurpose/soccer field, and picnic tables.
Richard T. Steed Memorial Park	City of San Clemente	Baseball/softball field, three batting cages, two bull pens, food concession, children's play area, skateboard court, and picnic tables.
San Luis Rey Park	City of San Clemente	BBQ/fire ring, children's play area, lawn bowling, tennis courts, and picnic tables.
Vista Bahia Park	City of San Clemente	Baseball/softball field, batting cage lanes and bullpens, children's play area, food concession, and picnic tables.
San Clemente Municipal Golf Course	City of San Clemente	18-hole course on 133 acres of landscaped area, 918 trees, and pro-shop, restaurant/clubhouse.
Prima Deschecha South Trail	City of San Clemente	Hiking and biking trail.
State Park Trail	City of San Clemente	Hiking and biking trail.
Bella Collina Town and Golf Club	Private	27-hole (three integrated 9-hole) golf course.

Sources: City of San Clemente 2015; California Department of Parks and Recreation 2009, 2010; 2015.

Within training areas, recreational activities are limited to weekends and holiday periods to avoid conflicts with training exercises. There are five major MCCS-managed facilities on MCB Camp Pendleton, of which only one facility (San Onofre Beach recreational facility) is proximate to the Proposed Project and is authorized use for active duty and retired military (MCB Camp Pendleton 2014). The general public has access to hunting, fishing, and camping areas on MCB Pendleton under these policies described above. Specifically, fishing is only permitted in ocean waters at Del Mar Harbor unless recreationists are escorted by military or DoD sponsor. Natural resources related recreational activities such as hiking, hunting, fishing, non-developed camping, bicycling, nature photography, horseback

riding, picnicking and other related recreational access within the training areas are coordinated by the MCB Pendleton's Resource Enforcement Compliance Branch.

One notable recreational facility that is open to the general public is the existing bicycle facility that extends parallel to, and east of, Interstate 5 (I-5). This route accommodates a substantial volume of long-distance bicyclists traveling between Oceanside and San Clemente.

### **California Department of Parks and Recreation**

San Onofre State Beach has almost 2.5 million visitors per year to enjoy swimming, sunbathing, camping, as well as viewing or participating in recreational surfing or competition. The three main coastal and inland areas of San Onofre State Beach are the San Onofre Bluffs, San Onofre Surf Beach, and the San Mateo Campground. A 1.5-mile nature trail connects the campground to Trestles Beach. San Onofre State Beach also includes surfing areas, including Trestles Beach and Surf Beach, and the 160-acre Trestles Natural Wetlands Preserve. In addition to the hiking trails shown in Figure 4.15-1, the State Parks Lease Area to the north and west of San Mateo Campground includes several additional recreational trails, including the Ancestors' Trail, the Peaceful Valley Trail, the Panhe Trail, and Mountains' Lookout. The Lot 4 Staging Area is located within the SONGS Plant Parcel 8 on a paved parking lot.

Through a 2,000-acre lease agreement between the California Department of Parks and Recreation and MCB Camp Pendleton (as described in above), there is year-round public access to over 4 miles of San Onofre State Beach (approximately 25 percent of MCB Camp Pendleton's coastline) (refer to Figure 4.15-1). As per Part II, Article L of the lease agreement, San Onofre State Beach may be temporarily closed when there are training exercises at MCB Camp Pendleton.

San Clemente State Beach is a mile-long beach located approximately 2 miles north of San Onofre State Beach. Recreational opportunities at the beach include two trails, wildlife and nature viewing opportunities, as well as camping and picnicking.

### **The City of San Clemente**

The City of San Clemente's Beaches, Parks, and Recreation Department oversees 324 acres of recreational space including 21 parks, 13.8 miles of hiking trails, 2 miles of public beaches, and a 133-acre golf course (City of San Clemente 2015). Of these recreational resources, five parks, three hiking trails, and a golf course are within the vicinity of construction segments of the Proposed Project. Specific hiking trails that traverse the Proposed Project area include the State Park Trail and Prima Deshecha South Trail. A biking trail crosses the northern most portion of the Proposed Project area.

A privately managed golf course (Bella Collina Towne and Golf Club) is located immediately west of the Proposed Project (refer to Figure 4.15-1).

#### **4.15.4 Applicant Proposed Measures**

The Proposed Project will incorporate the following APM to avoid or minimize potential impacts to recreation:

##### **APM REC-01. Construction Notification**

Signage will be posted at least four weeks prior to the start of construction in parks and near trails that are adjacent to or cross the Proposed Project. The signage will describe the location and duration of construction activities. The signage will also include contact information for the Proposed Project's public



liaison. Recreational managers will also be notified in advance to coordinate at least four weeks prior to the beginning of construction.

#### **4.15.5 Potential Impacts**

The Proposed Project includes reconductoring, removal of existing wood pole structures, and installation of new steel pole structures for the existing TL 695 and TL 6971 power lines. The operation and maintenance activities required for the power lines will not change from those currently required for the existing system; thus, no additional operation-related impacts related to recreation will occur. Furthermore, maintenance will decrease slightly due to the removal of wood pole structures and the installation of steel pole structures. Therefore, the impact analysis is focused on construction activities that are required to install the new conductor, remove the existing wood pole structures, install the new steel pole structures, and temporary work areas, as described in Chapter 3.0, Proposed Project Description.

##### **4.15.5.1 Methodology**

The analysis of impacts to recreation involved review of various documents, maps, and other data assembled from MCB Camp Pendleton and Internet research. Specifically, the Integrated Natural Resources Management Plan was reviewed as the Proposed Project will occur primarily within the MCB Camp Pendleton boundary. The California Department of Parks and Recreation and City of San Clemente websites were reviewed for recreational and community resources (i.e., parks, ball fields, camping sites, beaches, golf course, trails) that occur in proximity to the Proposed Project. The City of San Clemente Centennial General Plan (City of San Clemente 2014) was also reviewed for goals and land use actions that may be affected by the Proposed Project.

##### **4.15.5.2 Significance Criteria**

According to Section 15002(g) of the CEQA Guidelines, “a significant effect on the environment is defined as a substantial adverse change in the physical conditions which exist in the area affected by the proposed project.” As stated in Section 15064(b) of the CEQA Guidelines, the significance of an activity may vary with the setting. The potential significance of project-related impacts on recreation were evaluated for each of the criteria listed in the checklist, as discussed below.

- a) **Would the project increase the use of existing neighborhood and regional parks or other recreational facilities such that substantial physical deterioration of the facility would occur or be accelerated? *Less than Significant***

The Proposed Project will not involve any substantial temporary or permanent increase in population that would increase the use of existing recreational facilities (refer to Section 4.13, Population and Housing). The following paragraphs describe direct and indirect impacts on specific recreational facilities managed by MCCS, the California Department of Parks and Recreation, and the City of San Clemente, that would be affected by the Proposed Project.

#### **Marine Corps Community Services Facilities/Resources (San Onofre Beach)**

The MCCS San Onofre Beach recreational facility on MCB Camp Pendleton is located on the opposite side of I-5 from the Proposed Project, approximately 0.2 mile south of the overhead reconductor route. The SDG&E Lot 4 Staging Yard is located approximately 0.4 mile to the south and east of San Onofre Beach, on a paved parking lot within SONGS Plant Parcel 8. The noise impact from construction activities, including construction traffic and helicopter operations, will be comparatively minor at MCCS

San Onofre Beach. This is because construction activities will be at least 0.20 mile from MCCS San Onofre Beach, such activities will be temporary and intermittent, and the ambient noise condition includes traffic noise from I-5, Old Pacific Highway, and the Pacific Ocean. Because construction activities will not occur within or adjacent to this facility, there will be no effect on access to San Onofre Beach. Therefore, the Proposed Project will have no impact relative to the increased use and deterioration of recreational facilities on MCB Camp Pendleton.

#### **California Department of Parks and Recreational Facilities/Resources (San Onofre State Beach)**

Construction activities will occur in various locations within San Onofre State Beach, which is managed by the California Department of Parks and Recreation within the State Parks Lease Area. Construction will involve removal of the existing wood pole structures, installation the new steel pole structures, and reconductoring across various trails to the north and south of Cristianitos Road. As a result, there may be potential temporary access limitations for trail users. Also, there will be minor, temporary and intermittent construction noise and effects on parking. As noted in APM REC-01, SDG&E will post signage to inform recreational users of construction activities, and coordinate with recreational managers.

The SDG&E Lot 4 Staging Yard is not affiliated with San Onofre State Beach, and therefore use of the staging yard would have no effect on parking availability at Surf Beach. However, patrons at Surf Beach may be exposed to increased noise levels from construction activities, including traffic noise from construction vehicles and noise from helicopter operations. However, this noise increase would be intermittent and temporary.

The construction schedule and activities will be coordinated with the authorized officer of the California Department of Parks and Recreation to provide advance notice of the construction activities. Construction noise will be temporary and intermittent (refer to Section 4.12, Noise). Given these considerations, the Proposed Project's impacts on recreation at San Onofre State Beach will be less than significant.

#### **City of San Clemente Recreational Facilities/Resources**

Overhead reconductor routes run immediately adjacent to Vista Bahia Park and Richard T. Steed Memorial Park and cross the State Park Trail and Prima Deshecha South Trail (refer to Figure 4.15-1). Also, a construction staging yard will be established adjacent to Vista Bahia Park. Construction activities from the Proposed Project that have the potential to impact these recreational resources will be access limitations, construction noise, and/or potential safety hazards. Temporary increases in dust and odors from construction equipment will also occur. Dust and noise increases will be intermittent over a period during the 10-month construction period, of as discussed in Sections 4.3, Air Quality and 4.12, Noise. As discussed above, SDG&E will coordinate with the California Department of Parks and Recreation, and other park operators as necessary, to provide advance notification of construction activities. Therefore, impacts to recreational facilities and trails from construction activities associated with the Proposed Project will be less than significant.

**b) Would the project include recreational facilities or require the construction or expansion of recreational facilities which might have an adverse physical effect on the environment?**

**No Impact**

Construction activities will be temporary and will occur periodically near recreational facilities and/or areas managed by MCB Camp Pendleton, the California Department of Parks and Recreation, and the City of San Clemente. The Proposed Project will not involve the construction of any new park facilities, or the expansion of any existing park facilities. Also, because the Proposed Project will not induce population growth that would stimulate demand for recreation, no additional parks would be necessary.

Therefore, no adverse physical effect on the environment from new or expanded park facilities would occur, and the Proposed Project will have no impact.

#### 4.15.6 References

- California Department of Parks and Recreation. 2009. San Mateo Campground at San Onofre State Beach. Online at <http://www.parks.ca.gov/pages/647/files/SanMateo082609.pdf>. Accessed April 27, 2015.
- California Department of Parks and Recreation. 2010. San Onofre State Beach. Park Brochure. Online at <http://www.parks.ca.gov/pages/647/files/SanOnofreFinalWebLayout092710.pdf>, Accessed April 29, 2015.
- California Department of Parks and Recreation. 2015. San Clemente State Beach. Online at <http://www.parks.ca.gov/pages/646/files/sanclemente.pdf>. Accessed April 29, 2015.
- City of San Clemente. 2014. City of San Clemente, Centennial General Plan. Online at <http://38.106.5.200/home/showdocument?id=1450>. Accessed April 29, 2015.
- City of San Clemente. 2015. Recreation and Community, Beaches, Parks, & Recreation. Online at <http://san-clemente.org/recreation-community>. Accessed April 27, 2015.
- Headquarters, Marine Corps. 2013. MCO P5090.2A, Environmental Compliance and Protection Manual. August 2013.
- MCB Camp Pendleton. 2012. Integrated Natural Resources Management Plan. March 2012.
- MCB Camp Pendleton. 2014. San Onofre Beach Brochure. Online at <http://www.mccscp.com/wp-content/uploads/2014/06/San-Onofre-2014-Brochure.pdf>. Accessed September 12, 2015.

THIS PAGE IS INTENDED TO BE LEFT BLANK