

PUBLIC UTILITIES COMMISSION

505 VAN NESS AVENUE

SAN FRANCISCO, CA 94102-3298



August 17, 2012

Ms. Cristina Holstine
 Pacific Gas and Electric Company
 Land Planner, Technical and Land Services
 245 Market Street, Rm. 1054A
 San Francisco, CA 94105-1702

Subject: PG&E Crazy Horse Switching Station – Notice to Proceed #3

Dear Ms. Holstine:

A Final Initial Study/Mitigated Negative Declaration (IS/MND) for the Pacific Gas & Electric Company (PG&E) Crazy Horse Switching Station Project (Project) was evaluated and adopted by the California Public Utilities Commission (CPUC) in accordance with the California Environmental Quality Act (CEQA) on June 17, 2011. The mitigation measures (MMs) and Applicant Proposed Measures (APMs) described in the project IS/MND were adopted as conditions of project approval.

The project was initiated through Notice to Proceed (NTP) #1. The history of NTPs and PG&E requests are described in Table 1.

Table 1: Summary of Notices to Proceed (NTP), PG&E Requests, and CPUC Approvals

NTP	Action	Date	Description
NTP #1	CPUC Approval ¹	February 27, 2012	CPUC authorized PG&E to begin preconstruction MM and permit requirements, which include: (1) site preparation for California tiger salamander protection; and (2) conduct preconstruction biological surveys.
NTP #2	PG&E Request	March 2, 2012	PG&E requested to commence all construction activities in project areas needed to construct the switching station facility.
NTP #1 and NTP #2	CPUC Amendment to NTP #1 and Approval of NTP	March 8, 2012	CPUC issued conditional approval to continue site preparation and commence all construction activities in project areas needed to construct the switching station facility, provided that all applicable environmental protection measures

¹ PG&E did not submit a request for NTP #1.

Table 1: Summary of Notices to Proceed (NTP), PG&E Requests, and CPUC Approvals

NTP	Action	Date	Description
#2	CPUC Amendment	March 12, 2012	where completed prior to the start of construction, including preparation and approval of plans, surveys, and permits.
NTP #1 and NTP #2	CPUC Amendment	March 12, 2012	CPUC authorized limited preconstruction activities by USFWS-approved biologists and workers without the use of vehicles on site, while project plans were being prepared (as required by mitigation measures).
NTP #2	CPUC Rescinded	April 5, 2012	CPUC issued verbal notification that NTP #2 was rescinded after CDFG staff expressed concerns with the Avian Protection Plan and tree removal during bird nesting season. Conditional approval of NTP #1 remained in effect.
NTP #3	PG&E Request	July 16, 2012	PG&E requested review and approval of NTP #3 (included as Attachment A).
NTP #3	CPUC Approval	August 17, 2012	CPUC authorizes PG&E to commence select construction activities for the switching station facility: (1) Removal of approximately 202 trees and vegetation trimming; (2) construction of temporary and permanent access roads; and (3) installation of Towers 10/51 and 10/52. Conditions of authorization are provided in this letter.
Request for Minor Project Modifications	PG&E Request	July 30, 2012	<p>Minor Project Modifications:</p> <p>#1 Use of Hollister helicopter landing zone and access road.</p> <p>#2 Temporary workspace increase of 3.4 acres and permanent disturbance increase of 0.2 acre.</p> <p>#3 Creation of a temporary work space/unpaved access road (215 feet, 0.08 acres) for tree removal</p> <p>#4 Removal of additional trees (to account for smaller trees under crowns and trees in the expanded temporary workspace).</p>
Request for Minor Project Modifications	CPUC Approval	August 16, 2012	Approved through CPUC letter dated August 16, 2012.

NTP #3 REQUEST

On July 16, 2012, PG&E formally submitted a request for the review and approval of NTP #3 (Attachment A). NTP #3 includes some of the activities that had been included in the revoked NTP #2, as well as additional activities. This letter provides a conditional approval for NTP #3, subject to conditions described below.

Areas and Actions Included in NTP #3

NTP #3 authorizes PG&E to commence the following construction activities for the Crazy Horse switching station facility:

1. Removal and/or trimming of approximately 202 trees and vegetation trimming and clearing within all of the approved project work areas
2. Construction of temporary and permanent access roads, including blading a new logging road
3. Installation of Towers 10/51 and 10/52

The approved project work areas and access roads are shown in Attachment B.

Areas and Actions Not Included in NTP #3

NTP #3 does not authorize any other construction activities, including grading and cut-and-fill activities for the construction of the switching station, installation of switching station components, installation of additional towers and poles, or stringing of new overhead wires. A separate NTP request must be submitted by PG&E and an NTP issued by the CPUC before these additional activities can commence.

NTP #3 Approval Conditions

NTP #3 is hereby approved by the CPUC with conditions. The conditions of NTP #3 are based on the status of PG&E's work on the preconstruction requirements. No work can begin on any aspects of the construction activities approved in NTP #3 until all of the following conditions have been met to the satisfaction of the CPUC.

1. All activities approved in NTP #3 shall be completed prior to February 1, 2013. The bird nesting season will begin on February 1, 2013, and construction activities are not authorized after that date unless USFWS and CDFG have approved or commented on a project Avian Protection Plan (APP) and work is authorized by the CPUC.
2. PG&E shall submit a Monitoring Program (APM Hazards-5) for review and approval by CPUC.
3. PG&E shall provide the CPUC with a final copy of the Conceptual Landscape Plan and approval from Monterey County.
4. PG&E shall submit to CPUC the results of the pre-construction surveys identified in Table 2, below, prior to the start of construction.

Table 2: Pre-construction Surveys

Pre-construction Surveys	Mitigation Measure	Schedule
Sensitive resources mapping	APM Biology-10	Prior to construction
California Tiger Salamander and California Red Legged Frog	MM Biology-21, BO-AMM-S3	No more than 5 days prior to construction
Nesting birds	MM Biology-27	No more than 30 days prior to construction ²
Burrowing owl	MM Biology-28	No more than 30 days prior to construction ³
Golden eagles and white-tailed kites	MM Biology-36	No more than 30 days prior to construction ⁴
Bat roosts	MM Biology-29	Prior to construction
Badger dens	MM Biology-31	Prior to construction
Southwestern pond turtle, black legless lizard, and coast range newt	MM Biology-34	Prior to construction
Special-status plant species	MM Biology-17	July and September (or use past surveys ⁵)
Oak trees	MM Biology-40	Prior to construction

5. PG&E shall delineate grading and construction limit lines on the ground for all access roads and power line routes, in accordance with MM Aesthetics-6.

² Nesting bird surveys only need to be conducted for construction activities scheduled to begin during the breeding season from February 1 to August 31.

³ Surveys for burrowing owl shall be repeated if ground-disturbing activities in suitable habitat are delayed or suspended for more than 30 days.

⁴ Golden eagle and white-tailed kite surveys only need to be conducted for construction activities scheduled to begin during the breeding season from February 1 to August 31.

⁵ The text of MM Biology-17 states "If [focused botanical] surveys are not possible in all work areas during the months of July and September because of the construction schedule, information from past surveys will be used to delineate special-status plant populations."

6. PG&E provided CPUC with copies of the approved permits identified in Table 3 below. PG&E shall provide copies of any revised approved permits or documentation that no revisions to the approved permits are necessary.

Table 3: Required Permits

Permit or Agency Requirement	Mitigation Measure
Construction Storm Water Permit Program	APM Biology-13
File an NOI with SWRCB	APM Hydrology-2
Biological Opinion (BO)	MM Biology-8
USFWS approval for biologist working with golden eagle, White-tailed kite, CTS, and CRLF	MM Biology-8, -17, -21, -36
Incidental Take Permit	MM Biology-26
Section 401 Permit	Required by federal law
Section 404 Permit	Required by federal law
Monterey County Grading Permit	Required by state and County law

No additional permits are required for the approval of NTP #3.

PLANS

The CPUC has reviewed and approved the required plans submitted by PG&E. The plans are identified in the Table 4 below.

Table 4: Required Plans Reviewed and Approved by the CPUC

Plan Name	Mitigation Measure
Storm Water Pollution and Prevention Plan (SWPPP)	APM Biology-14, APM Biology-15, APM Hazards-4, APM Hydrology-1, and APM Hydrology-2
Erosion Control and Sediment Transportation Plan (ECSTP)	MM Geology-6 and APM Hazards-4
Incidental Take Permit for CTS	MM Biology-26
Hazardous Substance Control and Emergency Response Plan (HSCERP)	APM Hazards-1, APM Hazards-4, and APM Hydrology-1
Health and Safety Plan (HASP)	APM Hazards-2, APM Hazards-4, and APM Hydrology-1
Fire Prevention and Response Plan (FPRP)	APM Hazards-3
Environmental training program (WEAP)	APM Hazards-4

Ms. Cristina Holstine
August 17, 2012
Page 6

There are two plans that PG&E has not submitted to the CPUC:

1. Monitoring Program required by APM Hazards-5
2. Avian Protection Plan (APP) required by MM Biology-37

The Monitoring Program must be submitted for the CPUC's approval prior to commencement of activities authorized NTP #3, as per Condition of Approval #2 above.

The Avian Protection Plan will not be required prior to approval of NTP #3 provided that all construction activities approved in NTP #3 are completed prior to February 1, 2013.

COMMUNICATION

The CPUC understands that multiple and ongoing submittals may be required to complete each condition of approval. The CPUC requests constant communication between PG&E and the CPUC regarding the construction schedule and location prior to, and during construction, in order for the CPUC to verify that all applicable preconstruction requirements are completed. All applicable project MMs, APMs, compliance plans, and permit conditions shall be implemented. Please notify the CPUC and Panorama in writing as you satisfy each of the above conditions.

Please contact me or Jeff Smith at Panorama Environmental at (650) 373-1200 or jeff.smith@panoramaenv.com if you have any questions.

Sincerely,



Andrew Barnsdale
CPUC Project Manager

cc: Jeff Smith, Panorama
Aaron Lui, Panorama
Janet Liver, TRC
Judi Mosley, PG&E Attorney

Attachments:

Attachment A – Notice to Proceed Request #3, dated July 16, 2012

Attachment B – Figure showing the work areas approved for construction activities in
NTP #3

Crazy Horse Canyon Switching Station Project

Notice to Proceed Request #3

Submitted to

California Public Utilities Commission

*Construction of a new switching station, and
reconfiguration of two existing 115 kilovolt power lines*

July 16, 2012

Prepared by

Pacific Gas and Electric Company

This page intentionally left blank.

The Crazy Horse Canyon Switching Station Project (project) Notice to Proceed (NTP) Request #3 consists of all construction activities scheduled to occur during 2012 with the exception of those activities included in NTP #1. An NTP request for construction scheduled to occur during 2013 will be submitted at a later date.

From the Mitigation Monitoring, Compliance, and Reporting Program (MMCRP) for the project, an NTP request must include the following information:

- A description of the work
- Detailed description of the segment location, including maps, photos, and/or other supporting documents
- Verification that all relevant preconstruction mitigation measures and applicant proposed measures are implemented, or that they do not apply to the work covered by the NTP request
- Verification that all applicable permit conditions or requirements have been met for the work covered by the NTP request
- In the case where some outstanding preconstruction compliance items cannot be met prior to issuance of the NTP, a request shall be submitted that identifies the outstanding submittals, as well as how they will be met and approved in a timely manner prior to construction
- Up-to-date biological resource surveys or a commitment to survey and submission of results prior to construction
- All applicable jurisdictional permits or agency approvals (if necessary)
- Date of expected construction and duration of work

1. Work Area, Activities, and Duration

The specific activities being requested under this NTP are described as follows:

- Removal and/or trimming of trees within project work areas
 - approximately 202 trees will be cut down
 - logs will be hauled off-site, branches chipped on-site, and stumps grinded in-situ
- Construction of permanent access road
- Installation of Towers 10/51 and 10/52

The areas of work within which these activities will occur are portrayed on Attachment 1 of this NTP Request #3.

The described work activities will begin when the NTP is received and all conditions are met. Work is scheduled to begin September 1, 2012.

2. Regulatory Approvals

The California Public Utilities Commission (CPUC) has received the issued permits listed below.

Table 1: Required Permits

Permit	Date Issued	Date Received by the CPUC
Section 7 consultation	November 3, 2011	March 13, 2012
Incidental Take Permit	September 7, 2011	March 13, 2012
Clean Water Act Section 404 Nationwide Permit	January 11, 2012	March 13, 2012
Section 401 Water Quality Certification	January 31, 2012	March 13, 2012
Stormwater Pollution Prevention Plan; enrollment under General Construction National Pollutant Discharge Elimination System permit	February 23, 2012	March 13, 2012
Monterey County Grading Permit	March 16, 2012	March 27, 2012

3. Preconstruction Mitigation Measures and APMs

See Attachment 2 for a status table of the Preconstruction Mitigation Measures from the MMCPRP.

4. Biological Resource Surveys

Table 2 identifies the surveys to occur and associated timing to implement the Final IS/MND APMs and MMs within this NTP requested project area.

Table 2: Preconstruction Surveys

	Survey/Requirement	Reference	Timing/Requirements
1	Golden Eagle and White-tailed Kite	MM Biology-36	<u>No more than 30 days</u> prior to construction; to be conducted by a USFWS-approved biologist
2	Bird Nests	MM Biology-27	<u>No more than 30 days</u> prior to construction
3	Burrowing Owl	MM Biology-28	<u>No more than 30 days</u> prior to construction
4	California Tiger Salamander and California Red Legged Frog	MM Biology-21	<u>No more than 5 days</u> prior to any ground-disturbing activities
5	California Tiger Salamander and California Red Legged Frog	BO-AMM-S3	<u>Immediately</u> prior to construction activities
6	Special-status Plant Species	MM Biology - 17	Conduct surveys in <u>July and September</u> (if surveys not possible, use information from past surveys); flag special

			status plant species prior to construction
7	Bats	MM Biology-29	Conduct <u>pre-construction</u> surveys; remove trees with suitable roosting habitat prior to September 1
8	Southwestern Pond Turtle, Black Legless Lizard, and Coast Range Newt	MM Biology-34	<u>Immediately prior</u> to initiation of any ground disturbing activities within or immediately adjacent to suitable habitat; to be conducted by a qualified biologist
10	Badger	MM Biology-31	<u>Prior to construction</u>
11	Oak Trees	MM Biology-40	<u>Prior to construction</u>
12	Sensitive Resources	APM Biology-10	<u>Prior to construction</u>
13	California Tiger Salamander, California Red Legged Frog, Monterey Spineflower	BO-AMM-S1	<u>No more than 30 days</u> prior to construction
14	Special-status Amphibians and Reptiles	BO-AMM-S2	<u>No more than 2 weeks</u> prior to construction

MM = Mitigation Measure

AMM = Avoidance and Minimization Measure

ITP T&C = CDFG Incidental Take Permit Term Condition

BO = Biological Opinion (contains AMM and Terms and Conditions; G = General; S = species specific)

5. Required Plans

The CPUC has received the required plans listed below.

Table 3: Required Plans

Plan	Date Received by the CPUC	Date Revised Plan Received by the CPUC
Avian Protection Plan	New plan not yet submitted; work outside of nesting season	N/A
Fire Prevention and Response Plan	March 25, 2012	Not yet submitted.
Hazardous Substance Control and Emergency Response Plan	March 26, 2012	Not yet submitted.
Health and Safety Plan	March 23, 2012	Not yet submitted.
Stormwater Pollution Prevention Plan	March 13, 2012	Not yet submitted.

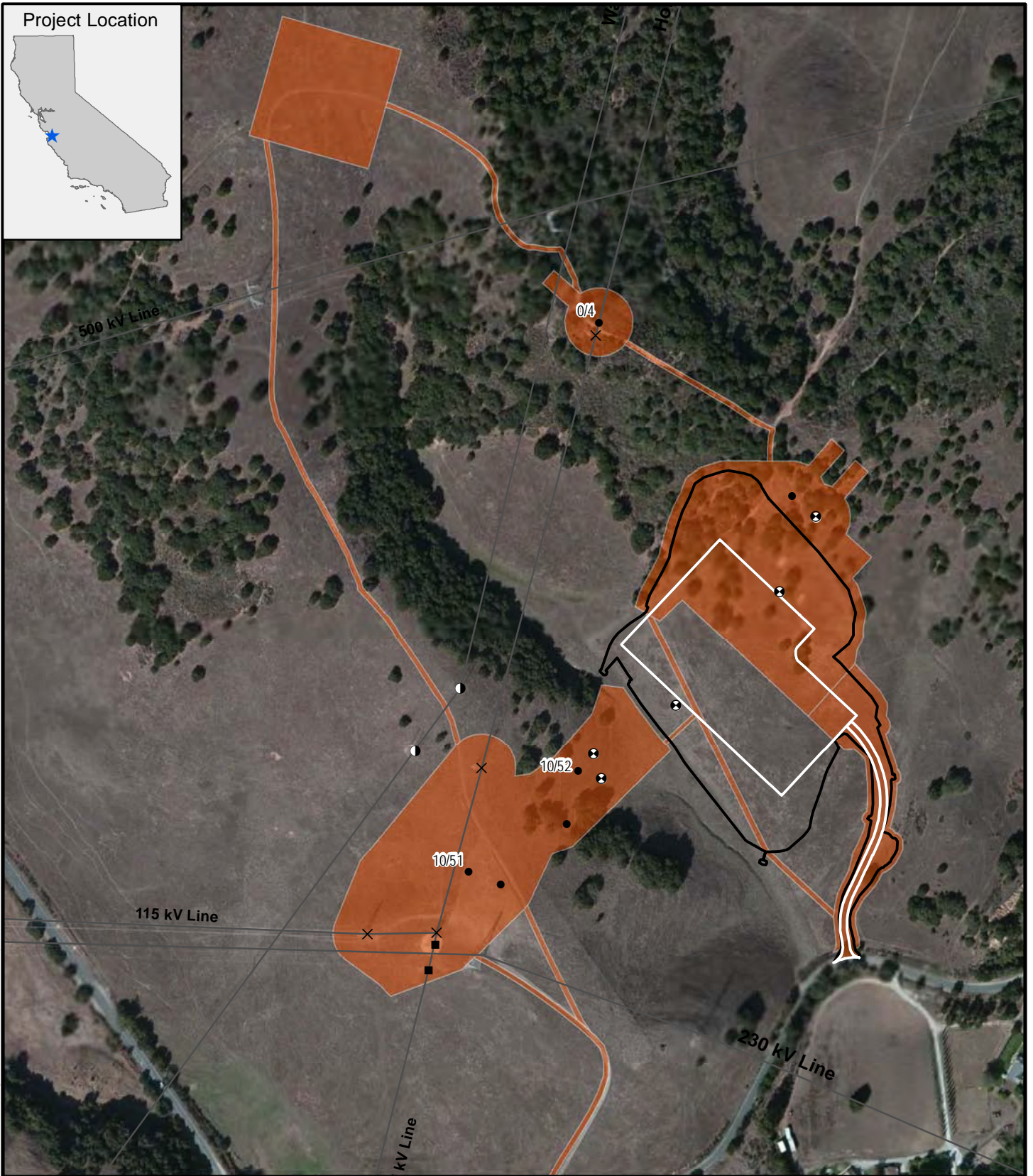
6. Other Preconstruction Activities

Worker Environmental Awareness Training

Worker Environmental Awareness Training will be conducted on August 17, 2012. Additional field personnel who begin work during construction will be provided training on-site before beginning work. Consistent with the MMCRP, training logs will be provided to the CPUC for recordkeeping.

Attachment 1 – NTP Work Areas

Project Location



CH:\N\GIS\EP\Proj\EC\Crzy-Ho\Map\X\D\Notice to Proceed #3, Work Areas.mxd

- Existing tower
- × Tower to be removed
- New tower location
- ⊙ Existing wood pole(s)
- ⊗ New TSP location

- Existing transmission or power line
- Proposed Switching Station and Access Road
- ▭ Grade and Fill Boundary

2012 Work Areas

**Crazy Horse Canyon Switching Station
Notice to Proceed #3, Work Areas**



N
Scale =
1:4,800

Attachment 2 – Mitigation Measures and Status

Table 1: Preconstruction Mitigation Measures			
APMs/Mitigation Measure	Implementation	Schedule	Status
<i>Aesthetics</i>			
<p>Mitigation Measure Aesthetics-6. PG&E shall implement the following measures to reduce construction-related visual effects as seen from the KOPs and within the immediate surroundings of the project area:</p> <ol style="list-style-type: none"> 1. Grading and construction limit lines shall be delineated on the ground for all access roads and power line routes. 2. [...]. 3. [...]. 	Verify installation of limit lines through on site observations.	Prior to clearing and grading activities	<p>Outstanding</p> <p><i>Limits will be delineated prior to construction.</i></p>
<p>Mitigation Measure Aesthetics-8. PG&E shall prepare and submit to Monterey County for review a full set of plans and specifications based on the Conceptual Landscape Plan presented on Figure 3.1-5, with the following additions and/or changes to the plan recommendations:</p> <ol style="list-style-type: none"> 1. The planting design shall emphasize visual screening of the switching station and related facilities as seen from San Juan Grade Road or Old Stage Road and take into consideration biological mitigation measures. 2. [...]. 	Verify content of Conceptual Landscape Plan through documentation.	Prior to construction	<p>Complete (with follow-up)</p> <p><i>Submitted to Monterey County for review 2/9/12. PG&E (Joyce Nichols) confirmed landowner okay with landscaping on his property. Need to produce copy of final plan; may increase container sizes</i></p>
<i>Biological Resources</i>			
<p>APM Biology-13. PG&E will obtain coverage under the Construction Storm Water Permit Program and implement BMPs for erosion and sediment control.</p>	Verify issuance of Construction Storm Water Permit through documentation.	Prior to construction	<p>Outstanding</p> <p><i>Need to add ESCTP language to SWPPP, amend schedule, and address 2012 construction</i></p>
<p>Mitigation Measure Biology-8 (proposed to supersede APM Biology-8). A USFWS-approved biologist shall design and lead a Worker Environmental Awareness Program (WEAP) for all construction and on-site personnel prior to beginning construction activities. Training shall include a discussion of avoidance and minimization measures to be implemented to protect biological resources, as well as the terms and conditions of the Biological Opinion and other permits. Training shall include information on the federal and state ESAs, the Migratory Bird Treaty Act (MBTA), and the Bald and Golden Eagle Protection Act, and the consequences of noncompliance with these acts. Workers shall be informed of the presence, life history, and habitat requirements of all special-status species, including the CRLF, with a potential to be affected within the project area. The training shall include a description of the CRLF and its habitat and the importance of the CRLF and its habitat, along with the general measures that are being implemented to conserve the CRLF, as they relate to the project. Training shall include information on state and federal laws protecting nesting birds, wetlands, and other water resources. An educational brochure shall be produced for construction crews working on the project. The brochure shall include color photos of sensitive species as well as a discussion of mitigation measures. Verify content of training materials and submittal of training attendance sheets through documentation. No construction worker shall be involved in field operations without having participated in this special-status species/sensitive habitat informational training. A copy of the WEAP shall be submitted to the CPUC at least 30 days prior to construction. Training attendance sheet(s) shall be submitted to the CPUC after each training session.</p>	Verify content of training materials and submittal of training attendance sheets through documentation.	30 days prior to construction	<p>Outstanding</p> <p><i>Submit WEAP to CPUC</i></p>
<p>APM Biology-15. PG&E has and will implement its system-wide program which includes established procedures for handling and managing hazardous substances and emergency response in the event of a hazardous substance spill. These procedures will add to the requirements in the project SWPPP.</p>	Verify incorporation of program into SWPPP through documentation.	Prior to construction	<p>Complete</p> <p><i>Hazardous Substance Control and Emergency Response Plan submitted to CPUC on March 26. Comments</i></p>

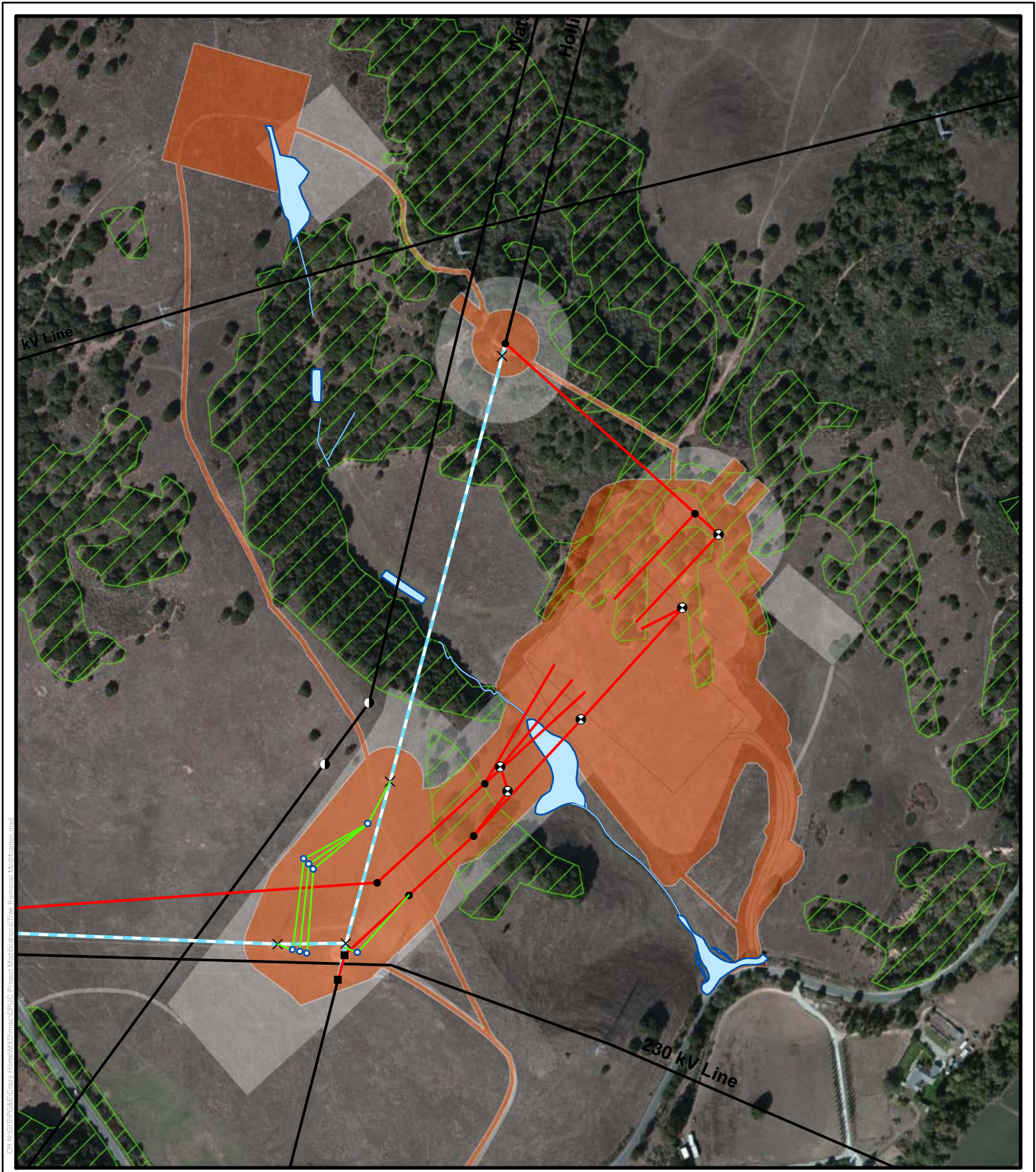
Table 1: Preconstruction Mitigation Measures			
APMs/Mitigation Measure	Implementation	Schedule	Status
			<i>received July 5. Need to resubmit.</i>
Mitigation Measure Biology-21 (proposed to supersede APM Biology-21). Pre-construction surveys for CRLF and CTS shall be conducted by a USFWS/CDFG-approved biologist no more than five days prior to the initiation of any ground disturbing activities within 600 feet of suitable aquatic or upland habitat. Visual encounter surveys shall be conducted within areas subject to ground disturbing activities. All suitable aquatic and upland habitat including refugia habitat such as under shrubs, downed logs, small woody debris, burrows, <i>etc.</i> , shall be thoroughly inspected. [...].	Verify completion of surveys through documentation.	No more than 5 days prior to construction	Outstanding <i>Surveys were conducted on March 23, 2012. Need to be performed again no more than 5 days prior to construction, and immediately prior to ground-disturbing activities</i>
Mitigation Measure Biology-23 (proposed to supersede APM Biology-23). Prior to the commencement of construction activities, flagging, signage, and/or high visibility fencing shall be erected around the CRLF, CTS, and coast range newt aquatic habitat to identify and protect it from the encroachment of personnel and equipment. [...].	Verify presence of flagging, signage, and/or fencing around CTS and CRLF aquatic habitat through on-site observations.	Prior to construction	Outstanding <i>To be performed prior to construction (signs should be used due to distance of aquatic habitat; it is outside of workspace and cattle are present)</i>
Mitigation Measure Biology-26 (proposed to supersede APM Biology-26). Prior to the start of construction, PG&E shall obtain an Incidental Take Permit from CDFG for CTS.	Verify results of consultations through documentation.	Prior to construction	Complete (with follow-up) <i>Permit issued September 7, 2011; due to change in project schedule, expiration date needs to be extended beyond expiration date of September 15, 2013..</i>
Mitigation Measure Biology-27 (proposed to supersede APM Biology-27). Pre-construction bird nesting surveys in the project area shall be conducted no more than 30 days before work is performed between February 1 and August 15. [...].	Verify completion of surveys through documentation.	Prior to construction between February 1 and August 15	Outstanding <i>Surveys were conducted on March 23 and April 2, 2012. Additional surveys performed June 29 and 29, 2012. Need to be performed again no more than 30 days prior to construction.</i>
Mitigation Measure Biology-28 (proposed to supersede APMs Biology-25 and Biology-28). No more than 30 days prior to the start of construction, preconstruction surveys for burrowing owls will be conducted in accordance with agency survey protocols to identify any burrowing owl or secondary sign of burrowing owls should any burrowing owls move onto the project area prior to construction. If ground-disturbing activities in suitable habitat are delayed or suspended for more than 30 days after the pre-construction surveys, the site will be resurveyed. If no burrowing owls are detected, no further mitigation is necessary. [...].	Verify completion of surveys through documentation.	No more than 30 days prior to construction	Outstanding <i>Surveys were conducted on March 23, 2012. Need to be performed again no more than 30 days prior to construction.</i>
Mitigation Measure Biology-29 (proposed to supersede APM Biology-29). Pre-construction surveys, <i>i.e.</i> visual encounter surveys using binoculars, shall be conducted for all areas that provide suitable bat roosting habitat, including man-made structures, snags, rotten stumps, mature trees with broken limbs, trees with exfoliating bark, bole cavities or hollows, dense foliage, <i>etc.</i> Sensitive habitat areas and roost sites shall be avoided to the maximum extent practicable. If no suitable roost sites are identified, no further minimization measures are necessary. [...].	Verify completion of surveys through documentation.	Prior to construction, prior to spring breeding season for bats	Complete (with follow-up) <i>Surveys were conducted on March 23, April 2, 2012, and June 29. One additional survey being scheduled for August 1st.</i>
Mitigation Measure Biology-31 (proposed to supersede APM Biology-31). A qualified biologist will survey the project area for	Verify completion of surveys through	Prior to construction	Outstanding

Table 1: Preconstruction Mitigation Measures			
APMs/Mitigation Measure	Implementation	Schedule	Status
badger dens prior to construction. If a badger den is found, the biologist will monitor the den to determine if it is actively being used by a badger. The biologist will determine this based on visual observation of the burrow or using camera traps to document its presence. Since badgers frequently changes dens, the biologist will monitor active dens to determine when the badger(s) is no longer using the den. [...]. If no badger dens are found or if potential dens are determined not to be active, no further mitigation is necessary.	documentation.		<i>Surveys were conducted on March 23, 2012. Need to be performed again prior to construction.</i>
Mitigation Measure Biology-34. Preconstruction surveys shall be conducted by a qualified biologist immediately prior to the initiation of any ground disturbing activities within or immediately adjacent to suitable southwestern pond turtle, black legless lizard, and coast range newt habitat. Visual encounter surveys shall be conducted within or immediately adjacent to areas subject to ground disturbing activities. All suitable aquatic and upland habitat for turtles and/or coast range newts, and friable soils within northern mixed chaparral/central maritime chaparral and oak woodland habitat for black legless lizards shall be thoroughly inspected. [...]. If no southwestern pond turtles and black legless lizards are observed during the preconstruction surveys, construction shall commence as scheduled.	Verify completion of surveys through documentation.	Prior to construction	Outstanding <i>Surveys were conducted on March 23, 2012. Need to be performed again immediately prior to ground-disturbing activities.</i>
Mitigation Measure Biology-36. No more than 30 days prior to the start of construction, for construction activities scheduled to begin during the breeding season from February 1 to August 31, a USFWS-approved biologist will conduct nest and point count surveys within one mile of the project footprint for golden eagles and white-tailed kites, unless otherwise directed by CDFG and/or USFWS. If surveys take place prior to February 15, then surveys will be repeated to detect any nesting activity. [...].	Verify completion of pre-construction nest survey through documentation.	No more than 30 days prior to construction	Outstanding <i>Surveys were conducted on March 23, 2012. Need to be performed no more than 30 days prior to construction</i>
Mitigation Measure Biology-37. Monitoring guidelines will be provided in an Avian Protection Plan to be submitted to the USFWS and CDFG for review and approval prior to construction. Documentation of Plan approval will be submitted to the CPUC for recordkeeping.	Verify preparation of Avian Protection Plan through documentation.	Prior to construction	Outstanding <i>Avian Protection Plan was submitted to CDFG/FWS in March, but is currently being revised and will be resubmitted to agencies.</i>
Mitigation Measure Biology-40. [...]. Prior to construction, oak trees greater than 6 inches in diameter at two feet above ground level that need to be removed within the work areas shall be enumerated to determine the total number of individuals affected. A description of the species, diameter at two feet above ground level, estimated height, and general health of the trees to be removed shall be recorded. Oak trees will be replaced or transplanted at a one-to-one ratio as shown in the Conceptual Landscaping Plan (Figure 3.1-4) or as determined in consultation with Monterey County. As detailed in mitigation measure Aesthetics-10, PG&E shall submit to Monterey County, and work closely with the County on, a full set of plans and specifications based on the Conceptual Landscape Plan presented on Figure 3.1-4 prior to construction.	Verify content of detailed landscaping plans through documentation.	Prior to construction	Complete/Follow-up <i>Arborist survey conducted in December 2011. Results of survey submitted to Monterey County on 2/9/12. Survey of additional area completed on May 25, 2012.</i> <ul style="list-style-type: none">• Need to submit latest survey results to CPUC
Cultural Resources			
Mitigation Measure Cultural-1. PG&E shall design and implement a Worker Environmental Awareness Program that shall be provided to all project personnel who may encounter and/or alter unique archaeological properties, historical resources, or paleontological resources, including construction supervisors and field personnel. No construction worker shall be involved in field operations without having participated in the Worker Environmental Awareness Program. The Worker Environmental Awareness Program shall include, at a minimum: 1. A review of archaeology, history, prehistory, and Native American cultures associated with historical resources in the project vicinity. 2. A review of photographs and figures of potential historical resources, unique archaeological properties, and paleontological resources in the project area.	Verify content of training materials and submittal of training attendance sheets through documentation.	At least 30 days prior to construction	Outstanding <i>WEAP to be submitted to CPUC.</i>

Table 1: Preconstruction Mitigation Measures			
APMs/Mitigation Measure	Implementation	Schedule	Status
<p>3. A review of applicable local, state, and federal ordinances, laws, and regulations pertaining to historical preservation.</p> <p>4. A discussion of procedures to be followed in the event that unanticipated paleontological or cultural resources are discovered during implementation of the project.</p> <p>5. A discussion of disciplinary and other actions that could be taken against persons violating historical preservation laws and PG&E policies.</p> <p>6. A statement by the construction company or applicable employer agreeing to abide by the Worker Environmental Awareness Program, PG&E policies, and other applicable laws and regulations.</p> <p>The Worker Environmental Awareness Program may be conducted in concert with other environmental or safety awareness and education programs for the project. Worker Environmental Awareness Program training materials and/or presentations shall be submitted to the CPUC for review and recordkeeping requirements prior to the start of training sessions and prior to the start of construction.</p>			
Geology and Soils			
<p>Mitigation Measure Geology-6. PG&E shall prepare an ECSTP as an element of the SWPPP describing BMPs to be used during construction. [...]The plan shall address construction in or near sensitive areas described in Section 3.5, Biological Resources. BMPs, where applicable, shall be designed based on specific criteria from recognized BMP design guidance manuals. [...].</p> <p>The ECSTP shall be submitted to the CPUC for review at least 30 days prior to the start of construction. [...].</p>	Verify content of ECSTP through documentation.	30 days prior to construction	Outstanding <i>Need to add ESCTP language to SWPPP</i>
Hazards and Hazardous Materials			
<p>APM Hazards-1. PG&E will submit a Hazardous Substance Control and Emergency Response Plan to the CPUC for recordkeeping at least 30 days prior to project construction. The plan will identify methods and techniques to minimize the exposure of the public to potentially hazardous materials during all phases of project construction through operation. The plan will require implementing appropriate control methods and approved containment and spill-control practices (i.e., spill control plan) for construction and materials stored on-site. [...].</p>	Verify content of Hazardous Substance Control and Emergency Response Plan through documentation.	30 days prior to construction	Complete (With Follow-Up) <i>Hazardous Substance Control and Emergency Response Plan submitted to CPUC on March 26. Comments received July 5. Need to resubmit.</i>
<p>APM Hazards-2. PG&E will prepare a site-specific Health and Safety Plan to ensure that potential safety hazards would be kept at a minimum. The plan will include elements that establish worker training and emergency response procedures relevant to project activities. The plan will be submitted to the CPUC at least 30 days prior to construction for CPUC recordkeeping.</p>	Verify content of Health and Safety Plan through documentation.	30 days prior to construction	Complete (With Follow-Up) <i>Health and Safety Plan submitted to CPUC on March 23. Comments received July 5. Need to resubmit.</i>
<p>APM Hazards-3. PG&E will prepare and submit a Fire Prevention and Response Plan to the CPUC and to local fire protection authorities for notification at least 30 days prior to construction. The plan will include fire protection and prevention methods for all components of the project during construction. The plan will include procedures to reduce the potential for igniting combustible materials by preventing electrical hazards, use of flammable materials, and smoking onsite during construction and maintenance procedures. Project personnel will be directed to park away from dry vegetation; to equip vehicles with fire extinguishing equipment; not to smoke; and to carry water, shovels, and fire extinguishers in times of high fire hazard.</p>	Verify content of Fire Prevention and Response Plan through documentation.	30 days prior to construction	Complete (With Follow-Up) <i>Fire Prevention and Response Plan submitted to CPUC on March 25. Comments received July 5. Need to resubmit.</i>
<p>APM Hazards-4. An environmental training program will be established to communicate to all field personnel any environmental concerns and appropriate work practices, including spill prevention and response measures and BMPs. The training program will emphasize site-specific physical conditions to improve hazard prevention (e.g., identification of flow paths to nearest waterbodies) and will include a review of all site-specific plans, including but not limited to the project's Hazardous Substances Control and</p>	Verify content of training materials and submittal of training attendance sheets through documentation and on-site observations.	Prior to construction	Outstanding <i>To be included in WEAP to be submitted to CPUC</i>

Table 1: Preconstruction Mitigation Measures			
APMs/Mitigation Measure	Implementation	Schedule	Status
Emergency Response Plan, SWPPP, Erosion Control and Sediment Transport Plan, and Health and Safety Plan.			
APM Hazards-5. A monitoring program will be implemented to ensure that the plans are followed throughout the construction period. [...]	Verify content of plans through documentation.	Prior to construction	Outstanding <i>Need to finalize setup of electronic compliance reporting system (add project data); confirm use of PG&E terminology versus CPUC terminology.</i>

Table 1: Preconstruction Mitigation Measures			
APMs/Mitigation Measure	Implementation	Schedule	Status
Hydrology and Water Quality			
<p>APM Hydrology-1. Worker environmental awareness will communicate environmental issues and appropriate work practices specific to this project. This awareness will include spill prevention and response measures and proper BMP implementation. The SWPPP training will emphasize site-specific physical conditions to improve hazard prevention (e.g., identification of flow paths to nearest waterbodies) and will include a review of all site-specific water quality requirements, including applicable portions of the Health and Safety Plan and PG&E's Hazardous Substances Control and Emergency Response program.</p>	<p>Verify content of training materials and submittal of training attendance sheets through documentation.</p>	<p>Prior to construction</p>	<p>Outstanding <i>WEAP to be submitted to CPUC.</i></p>
<p>APM Hydrology-2. PG&E will file a Notice of Intent with the State Water Resources Control Board for coverage under the General Construction Storm Water Permit and will prepare and implement a SWPPP in accordance with General Order No. 99-08-DWQ. Implementation of the SWPPP will help stabilize graded areas and waterways and reduce erosion and sedimentation. The following measures are generally drawn from that permit and PG&E's standard practices, and will be included in the SWPPP prepared for the construction of the project:</p> <ol style="list-style-type: none"> 1. All BMPs will be on-site and ready for installation before the start of construction activities. 2. BMPs will be developed to prevent the acceleration of natural erosion and sedimentation rates. A monitoring program will be established to ensure that the prescribed APMs are followed throughout project construction. BMPs will include: <ol style="list-style-type: none"> a. straw wattles, water bars, covers, silt fences, sensitive area access restrictions (e.g., flagging), or other sediment containment methods placed around and/or down slope of work areas prior to earth disturbing activities and before the onset of winter rains or any anticipated storm events; b. mulching, seeding, or other suitable measures to protect exposed areas during construction activities as necessary; c. installation of additional silt fencing prior to construction along the southern and western edges of the proposed switching station site to address unforeseen runoff from the property into the nearby intermittent drainages, seasonal wetlands, and Gabilan Creek; d. use of brooms and shovels (as opposed to water) when possible to maintain a clean site; e. construction of a stabilized construction entrance/exit to prevent tracking of dirt onto San Juan Grade Road; f. establishment of a vehicle storage, maintenance, and refueling area, if needed, to minimize the spread of oil, gas, and engine fluids. Use of oil pans under stationary vehicles is strongly recommended; and g. no overnight parking of mobile equipment within 100 feet of wetlands, culverts, or creeks. Stationary equipment (e.g., pumps, generators) used or stored within 100 feet of wetlands, culverts, or creeks will be positioned within secondary containment. 3. All BMPs will be inspected before and after each storm event. BMPs will be maintained on a regular basis, and replaced as necessary throughout the course of construction. 4. A Qualified SWPPP Practitioner will supervise placement of silt fencing at the proposed switching station site to limit the area of disturbance during construction at the site. The silt fence will be monitored regularly to ensure effectiveness. <p>PG&E will provide compensatory mitigation for permanent impacts to waters of the state and waters of the U.S. as required by the USACE, RWQCB, and CDFG as part of the permitting process for each agency.</p>	<p>Verify submittal of Notice of Intent through documentation.</p> <p>Verify incorporation of measures into SWPPP through documentation.</p>	<p>Prior to construction</p>	<p>NOI- Outstanding <i>Norm to file 1 month prior to construction (July 23, 2012?)</i></p> <p>BMP's onsite – Outstanding <i>ETIC</i></p> <p>Compensatory Mitigation – Outstanding <i>PG&E to coordinate implementation of wetland mitigation plan</i></p>

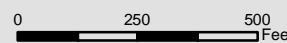


CH:\NIG\EP\6835\6835 - Home\MAX\Drawings\CPUC\Project Mod\04\04\01\Tree Removal\Modification.mxd

7/19/2012

- | | | |
|-------------------------|---------------------------------------|---------------------------|
| ■ Existing tower | — Reconfigured power lines | ■ Modified Workspace |
| × Tower to be removed | — Power line to be removed | ▨ Coast live oak woodland |
| ● New tower location | — Existing transmission or power line | |
| ⊙ Existing wood pole(s) | □ Existing workspace | |
| ⊙ New TSP location | ▭ Seasonal wetland | |
| ○ Shoofly Circuit | — Intermittent drainage | |

**Proposed Switching Station
Tree Removal Modification**
Crazy Horse Canyon Switching Station



Scale =
1:4,800