



**Rich Drozen**

**CAL FIRE RA Assistant Chief**

**Decision Support Systems SCOUT - Operations / Training**

**[Rich.Drozen@fire.ca.gov](mailto:Rich.Drozen@fire.ca.gov)**

Using Data  
to inform  
operational  
decision  
making





# Operational Strategic Planning Process Camp Incident

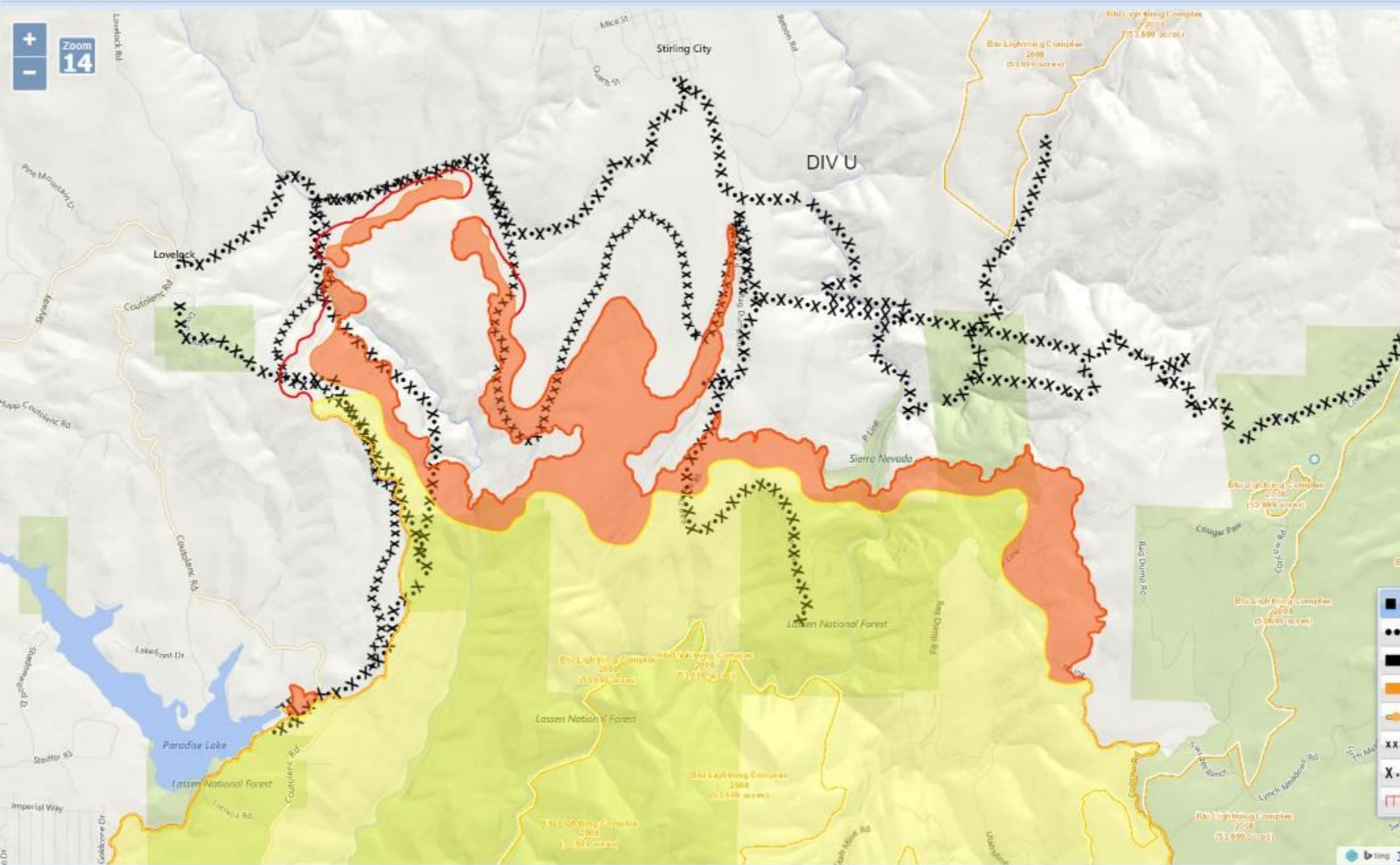
## Goals:

- Establish informed Primary, Secondary, & Contingency Fireline
- Quickly communicate and implement this Strategic Plan to Operational personnel

## Required resources:

- Local Knowledge: CAL FIRE Butte Unit, USFS, Timber Companies, Team Operations Chief
- SCOUT with Projector
- AFF & AVL – Aircraft and vehicle locations
- Current IR information – NIROPS - National Guard – UAV data
- Fire History – previous fire perimeters
- Fuel Treatment Projects with old dozer and handline data





Map Style Selection Panel:

- Bing Roads
- Bing Aerial
- Bing Aerial With Labels
- Open Street Map
- US Topo 7.5min
- USGS TOPO
- USGS Imagery Topo Base Map
- USGS Shaded Relief Large
- FAA - Sectional Aeronautical Charts

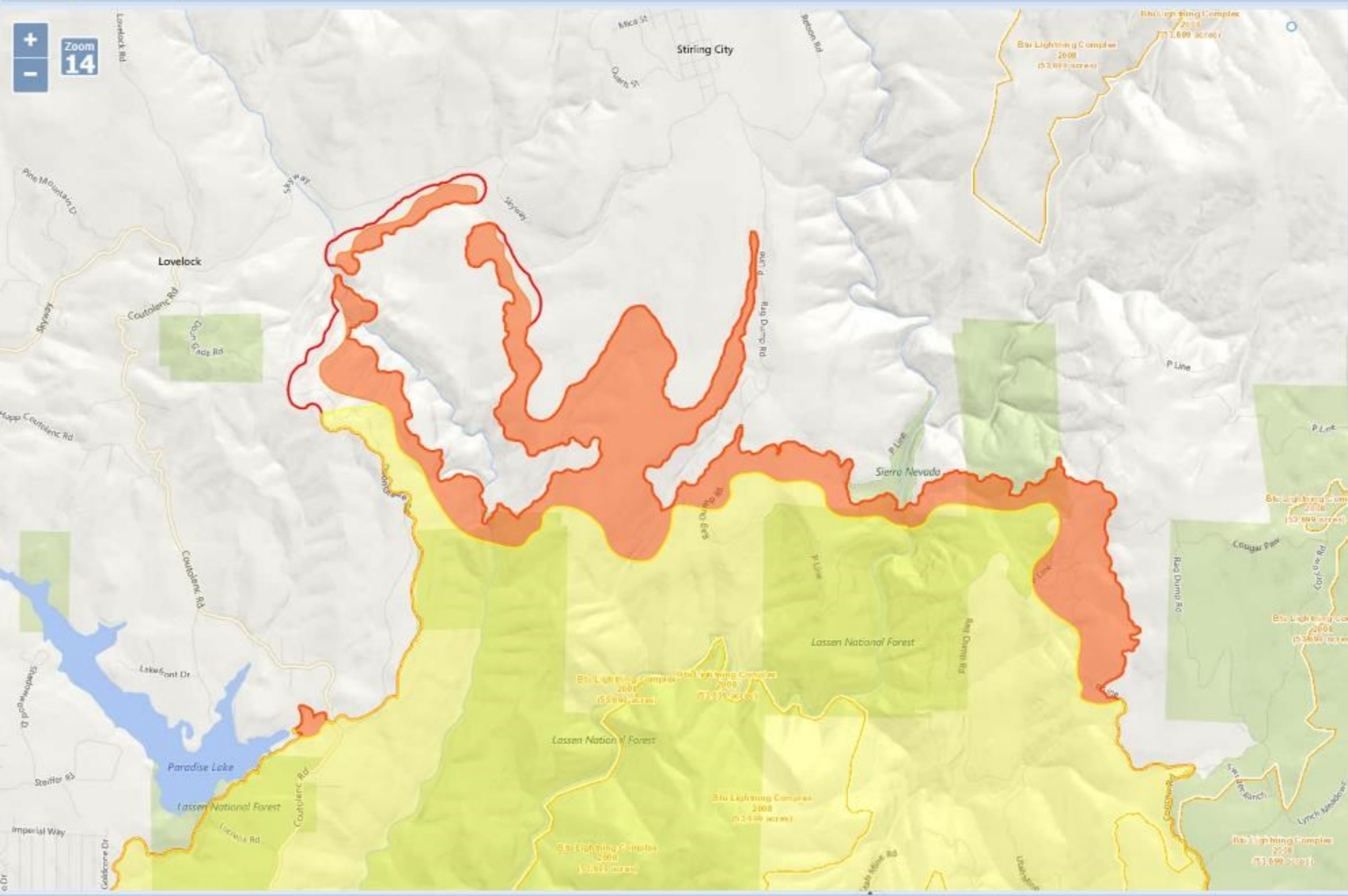
Draw Panel:

- Location pin icon
- Line drawing icon
- Text drawing icon
- THIN button
- Color selection palette

Legend Panel:

- Planned Fire Line
- Secondary Fire Line
- Completed Fire Line
- Fire Spread Prediction
- Management Action Point
- Completed Dozer Line
- Proposed Dozer Line
- Uncontrolled Fire Edge Line





Legend

- US Forest Service
- National Parks
- Orphaned uploads
- 2017 Incidents
- 2018 Incidents
  - BTU Camp Incident
    - Re Entry Re pop Collabroom Polygon
    - BTU Camp PACE 11/25
    - IR
    - Old Gen Info
      - Camp Old Dozer Lines
      - Old Dozer Handline
      - Camp Old Dozer Lines Handline
      - BTU CAMP FIREPOINTS
      - BTU CAMP OPS WHEEL 11-10
      - BTU Camp Fire Perim 11-8 1830
    - ANG UAV Data
      - Mill Air 11/18 02:44
      - Mill Air 11/13 15:00
      - BTU Camp Drone 11-8
      - BTU Camp 11-8

Import Data

Draw

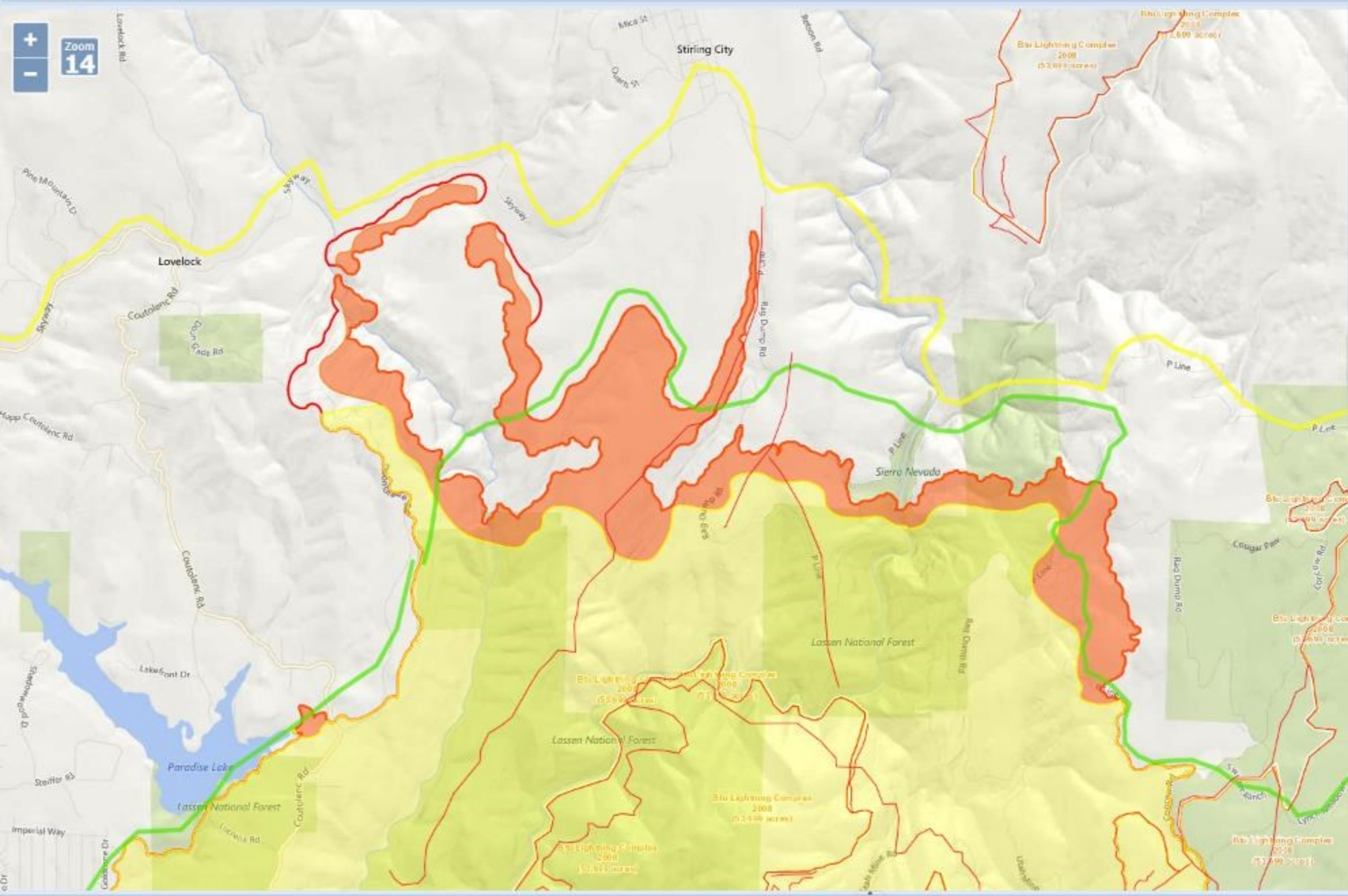
THIN

Color selection palette

Legend

- Planned Fire Line
- Secondary Fire Line
- Completed Fire Line
- Fire Spread Prediction
- Management Action Point
- Completed Dozer Line
- Proposed Dozer Line
- Uncontrolled Fire Edge Line





- US Forest Service
- National Parks
- Orphaned uploads
- 2017 Incidents
- 2018 Incidents
  - BTU Camp Incident
    - Re Entry Re pop Collabroom Polygon
    - BTU Camp PACE 11/25
    - IR
    - Old Gen Info
      - Camp Old Dozer Lines
      - Old Dozer Handline
      - Camp Old Dozer Lines Handline
      - BTU CAMP FIREPOINTS
      - BTU CAMP OPS WHEEL 11-10
      - BTU Camp Fire Perim 11-8 1830
    - ANG UAV Data
      - Mill Air 11/18 02:44
      - Mill Air 11/13 15:00
      - BTU Camp Drone 11-8
      - BTU Camp 11-8

Import Data

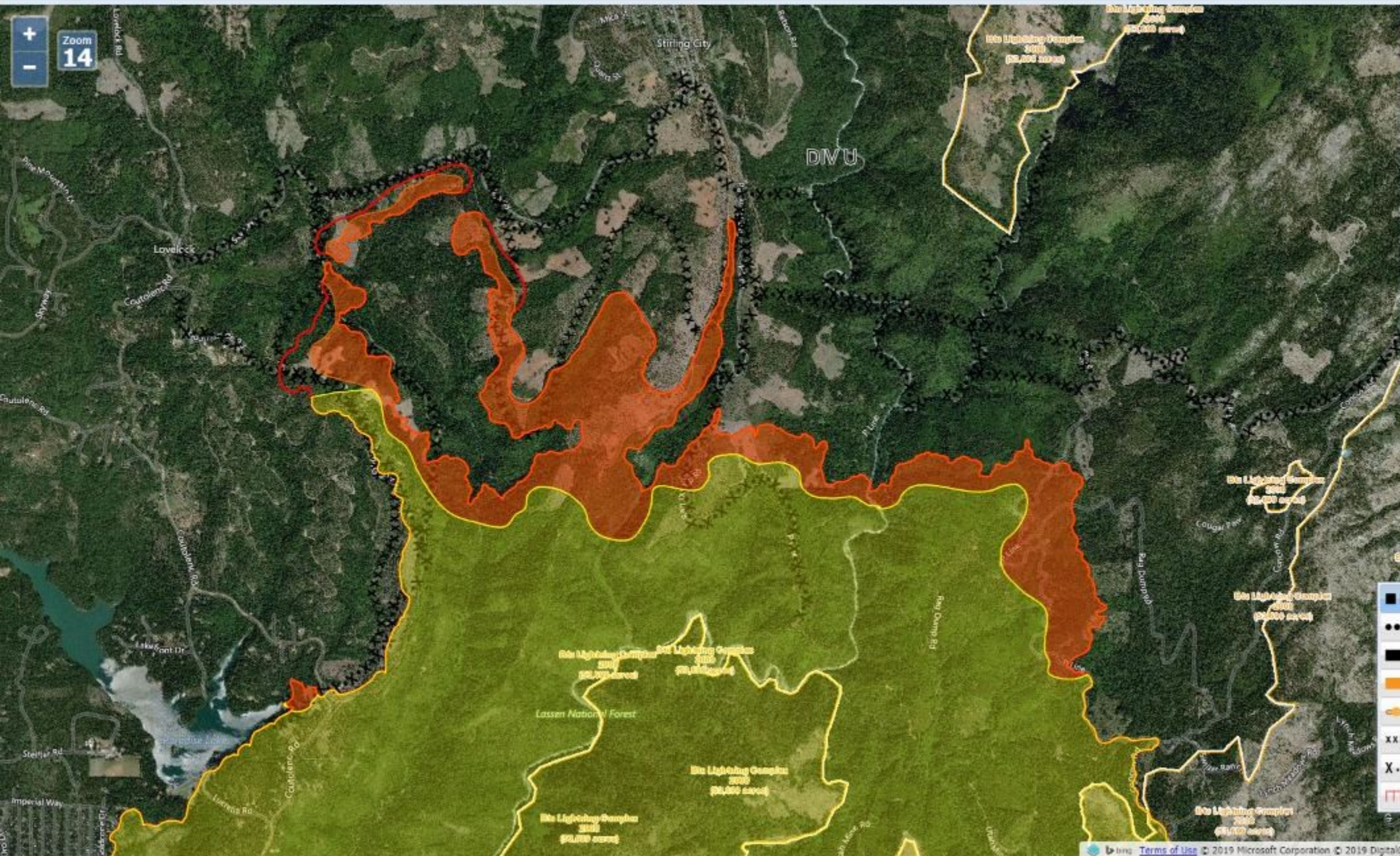
Draw

THIN

Color selection palette

- Planned Fire Line
- Planned Fire Line
- Completed Fire Line
- Fire Spread Prediction
- Management Action Point
- Completed Dozer Line
- Proposed Dozer Line
- Uncontrolled Fire Edge Line





Map style selection menu:

- Bing Roads
- Bing Aerial
- Bing Aerial With Labels
- Open Street Map
- US Topo 7.5min
- USGS TOPO
- USGS Imagery Topo Base Map
- USGS Shaded Relief Large
- FAA - Sectional Aeronautical Charts

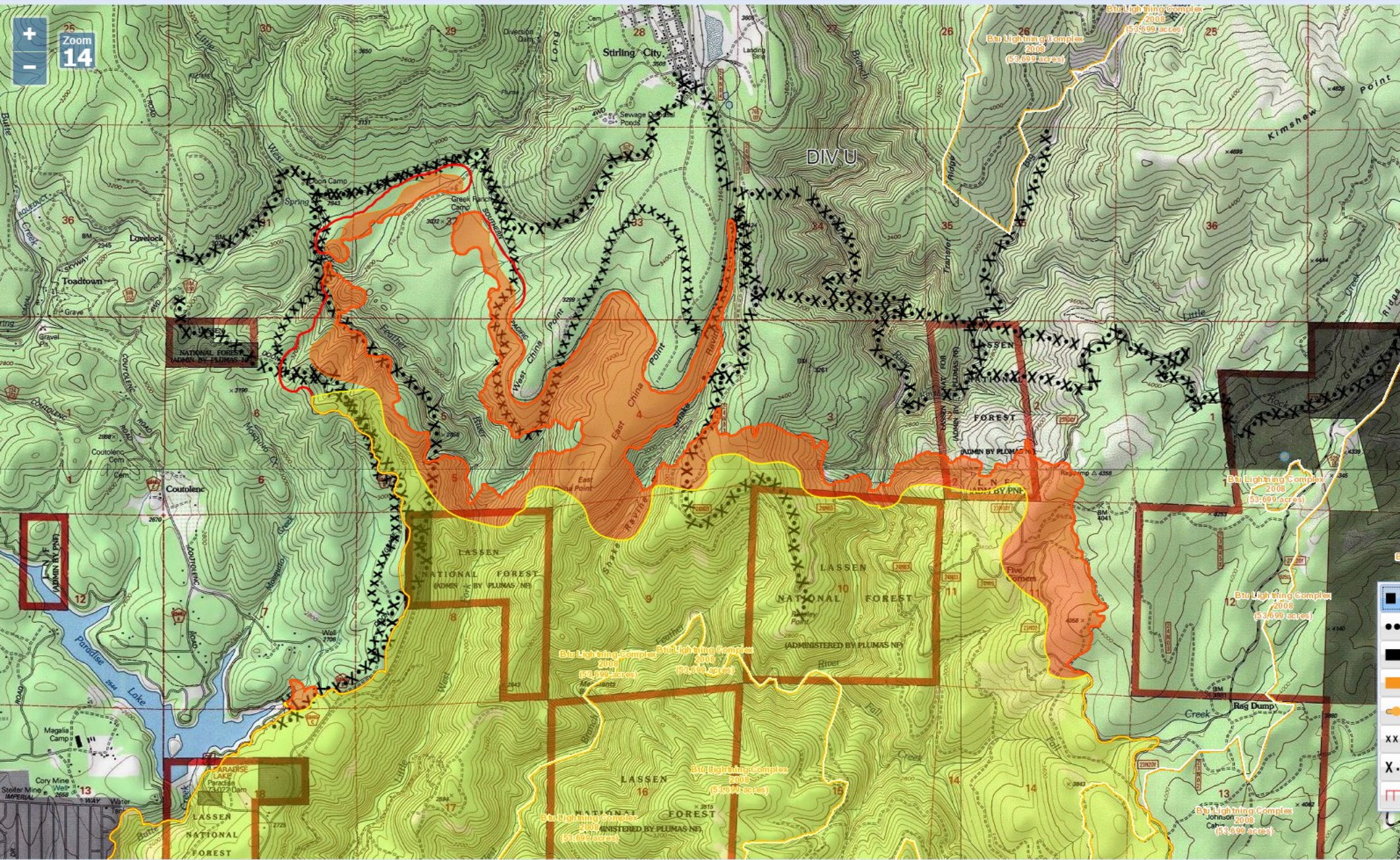
Draw toolbar:

- Pin
- Erase
- THICK
- THIN
- 

Legend:

- Planned Fire Line
- Secondary Fire Line
- Completed Fire Line
- Fire Spread Prediction
- Management Action Point
- Completed Dozer Line
- Proposed Dozer Line
- Uncontrolled Fire Edge Line





Map Style Selection Panel:

- Bing Roads
- Bing Aerial
- Bing Aerial With Labels
- Open Street Map
- US Topo 7.5min
- USGS TOPO
- USGS Imagery Topo Base Map
- USGS Shaded Relief Large
- FAA - Sectional Aeronautical Charts

Draw Panel:

- Location pin icon
- Text icon
- Circle icon
- Line icon
- THIN dropdown menu
- Color selection bar

Legend Panel:

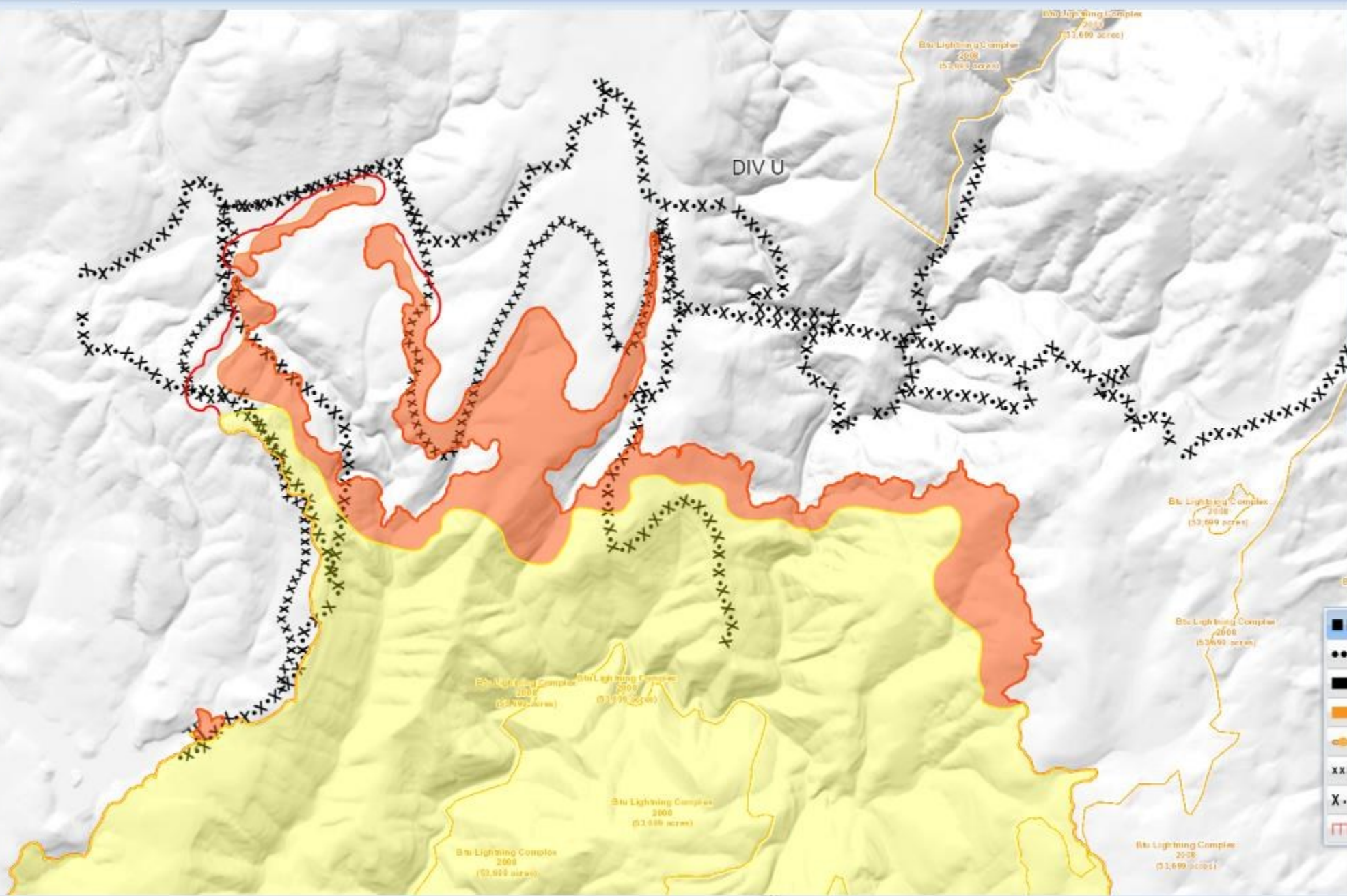
- Planned Fire Line
- Completed Fire Line
- Fire Spread Prediction
- Management Action Point
- Completed Dozer Line
- Proposed Dozer Line
- Uncontrolled Fire Edge Line





Zoom 14

+ -



Legend

- Bing Roads
- Bing Aerial
- Bing Aerial With Labels
- Open Street Map
- US Topo 7.5min
- USGS TOPO
- USGS Imagery Topo Base Map
- USGS Shaded Relief Large
- FAA - Sectional Aeronautical Charts

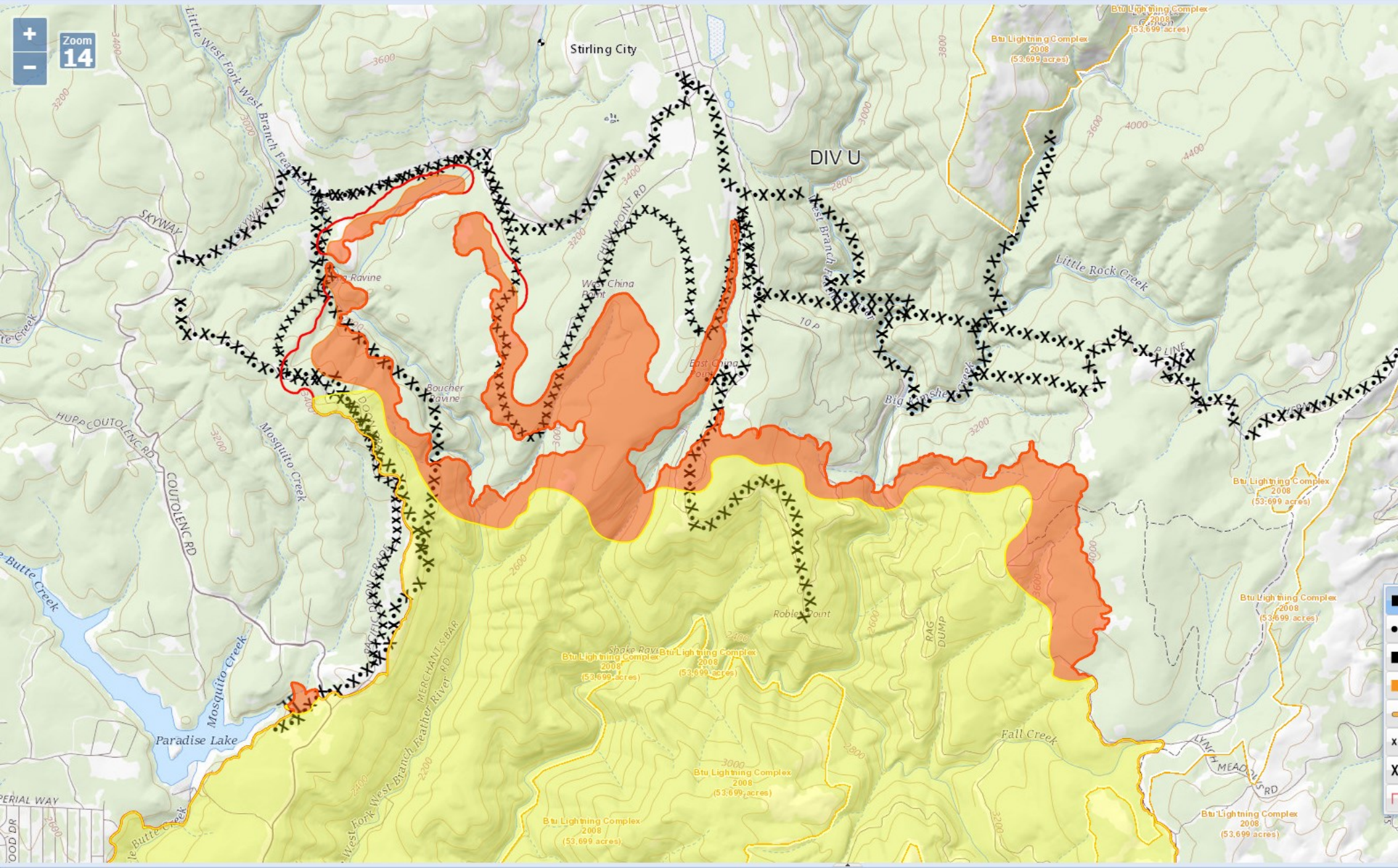
Draw

THIN

Legend

- Planned Fire Line
- Secondary Fire Line
- Completed Fire Line
- Fire Spread Prediction
- Management Action Point
- Completed Dozer Line
- Proposed Dozer Line
- Uncontrolled Fire Edge Line





Map Style Selection Panel:

- Bing Roads
- Bing Aerial
- Bing Aerial With Labels
- Open Street Map
- US Topo 7.5min
- USGS TOPO
- USGS Imagery Topo Base Map
- USGS Shaded Relief Large
- FAA - Sectional Aeronautical Charts

Draw Panel:

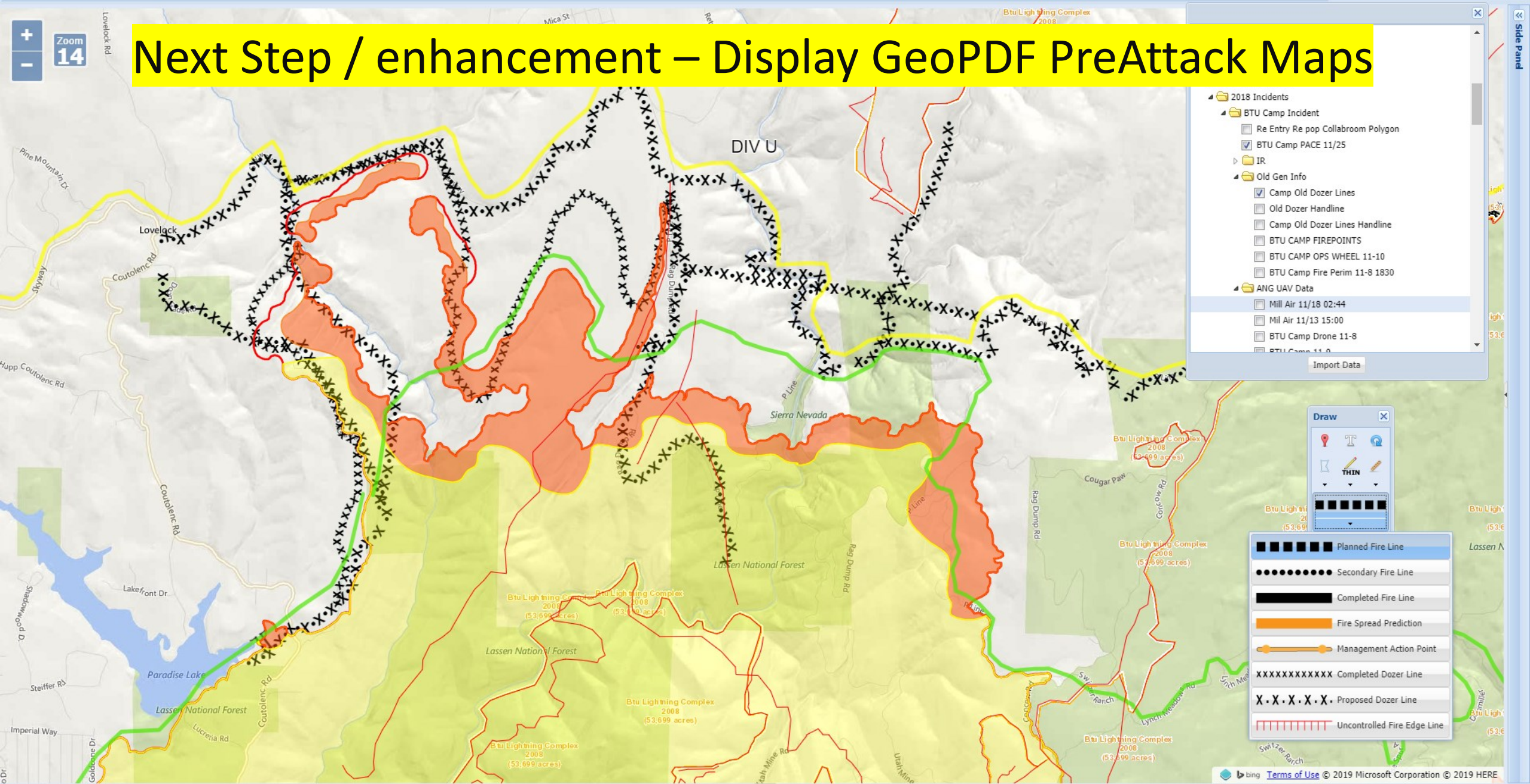
- Location pin icon
- Text icon
- Circle icon
- Line icon
- THIN dropdown menu
- Color selection bar

Legend Panel:

- Planned Fire Line
- Secondary Fire Line
- Completed Fire Line
- Fire Spread Prediction
- Management Action Point
- Completed Dozer Line
- Proposed Dozer Line
- Uncontrolled Fire Edge Line



# Next Step / enhancement – Display GeoPDF PreAttack Maps



**2018 Incidents**

- BTU Camp Incident
  - Re Entry Re pop Collabroom Polygon
  - BTU Camp PACE 11/25
- IR
- Old Gen Info
  - Camp Old Dozer Lines
  - Old Dozer Handline
  - Camp Old Dozer Lines Handline
  - BTU CAMP FIREPOINTS
  - BTU CAMP OPS WHEEL 11-10
  - BTU Camp Fire Perim 11-8 1830
- ANG UAV Data
  - Mill Air 11/18 02:44
  - Mil Air 11/13 15:00
  - BTU Camp Drone 11-8
  - BTU Camp 11-8

Import Data

**Draw**

THIN

Legend for drawing tools





# National Guard RFI (Request for Information) coordination process



Ops 3: Identify any Ember Cast and any ignitions in the yellow area for the duration of the Red Flag wind event. Report back to Ops Chief Bischof

Map Position Sync

Allow others to move this map

Move others to my current map location

Chats

- Whiteboard Chat
- Bret Bothelio, CA - California Military Department (11/15 9:09:38 AM): Current RFI List:
- Bret Bothelio, CA - California Military Department (11/15 9:09:56 AM): Perimeter starting at SP: 105FJ1336388625 going clockwise 2. Analysis of burn IVO 105FK2593616642. 4. DA
- Rich Drozen, CA - CDF - Sacramento HQ (11/17 7:46:08 AM): Ops 2 - Fire Progression in Grizzly Creek. Report back intel to OPS Bischof
- Rich Drozen, CA - CDF - Sacramento HQ (11/17 7:53:12 AM): Ops 3 - Identify any Ember Cast and any ignitions in the yellow area for the duration of the Red Flag wind event.. Report back intel to OPS Bischof
- Andreas Johansson, CA - CDF - Incident Mgt Team 4 (11/17 11:36:56 AM): Ops - 2 has been mapped. Uploaded to the box
- Bret Bothelio, CA - California Military Department (11/17 8:52:23 PM): Ops 3 area monitored during RC-26 sortie, no ember casting identified. Product to be uploaded. Follow on sorties will continue monitoring during event.
- Robert Barron, CA - CDF - Incident Mgt Team 4 (11/19 7:56:56 AM): Perimeter updated from 11/19 IR

Rich Drozen (CA - CDF - Sacramento HQ)

Send a message



# Evacuation status shared with EOC, SO, & Cooperators

(no subject) - rdrozen@gm... x Recent - Google Drive x SCOUT Staff Report - Camp x 13590.jpeg - Google Drive x SCOUT Activation on Camp x ICP INTEL - Google Docs x Amazon.com: Online Shop... x SCOUT x + - x

https://www.scout.ca.gov/nics/home.html

Situation Awareness & Collaboration Tool Incident: CA BTU Camp x Incidents Rooms Rich Drozen Help Logout

Workspace Evac Repop Process Evacuations Maps Data Weather Tracking Tools

Zoom 11

Map Position Sync  Allow others to move this map Move others to my current map location

Marked Safe by PG&E Electric  
Primary Energized by PG&E Electric

Repopulate  
Evacuation Warning  
Repopulate Resident only 24 Hrs  
Evacuation Order

Map Position Sync  Allow others to move this map Move others to my current map location

bing © 2018 Microsoft Corporation © 2018 HERE Terms of Use



# Infrastructure restoration / Evacuation coordination

## Incident Management Team

Safety

Operations

Liaison

Law Enforcement Liaison

## Utilities

Power – PG&E

Communication – AT&T

Water - Paradise Irrigation District

## Butte County

Sheriff Department

Emergency Operations Center

Health Department

Building Department

Road Department





# Questions



OES SCOUT Page with Help files <http://www.caloes.ca.gov/scout>

**Rich Drozen**

**CAL FIRE RA Assistant Chief**

**Decision Support Systems SCOUT - Operations / Training**

**Rich.Drozen@fire.ca.gov**