



# San Diego Fires

LESSONS LEARNED

**"It Takes A Village"**

# San Diego Fire History

California has always had large fires

“Mega” Fires did occur but were rare events

- 1970 Laguna Fire
- 1977 Marble Cone
- 1320 Matilija Fire

We have also had historically damaging fires

- 1977 Sycamore Canyon
- 1990 Paint Fire
- 1992 Fountain Fire

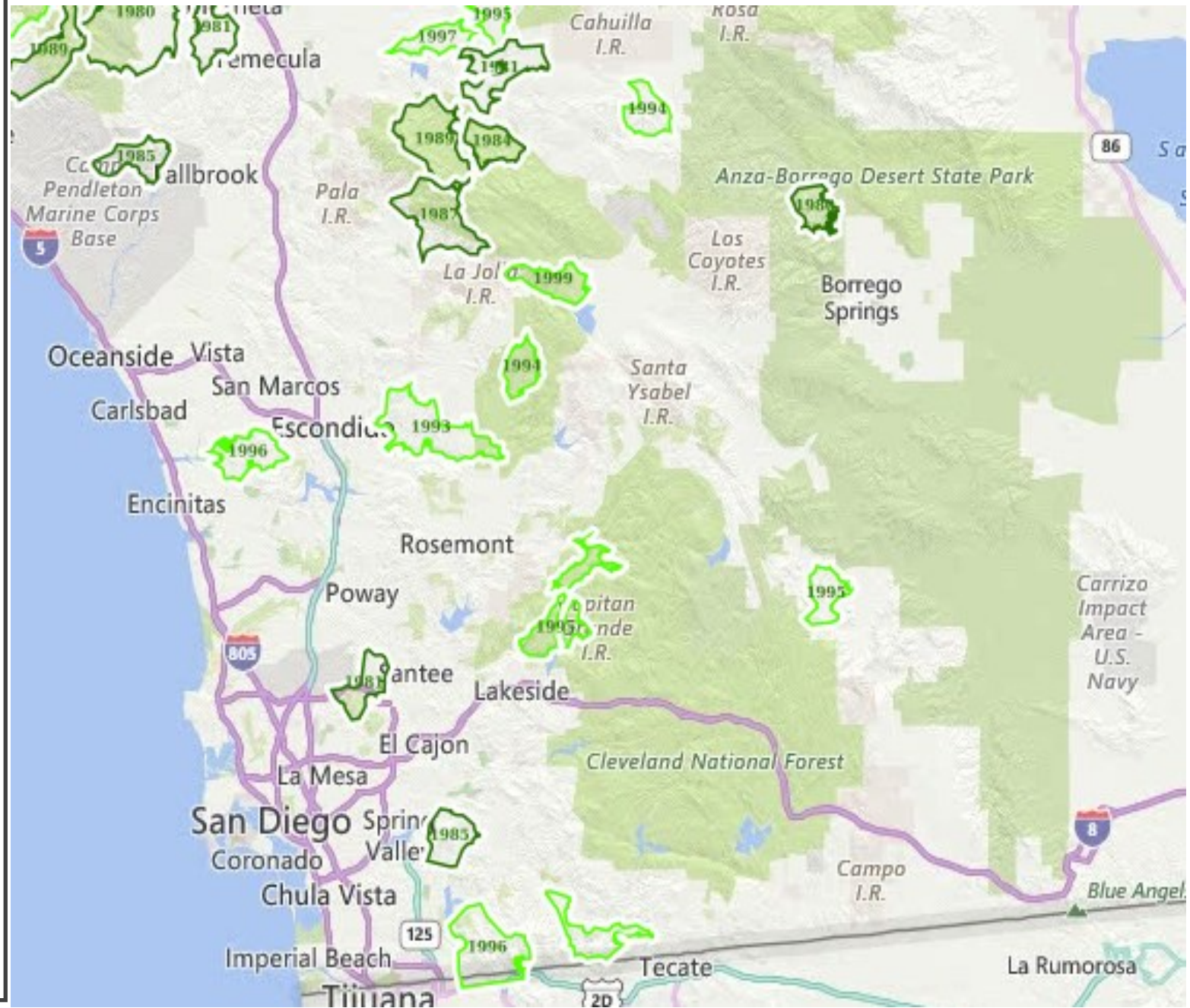
# San Diego Fire History

In 2003 San Diego experienced the first Mega Damaging Fires. We thought it was an anomaly

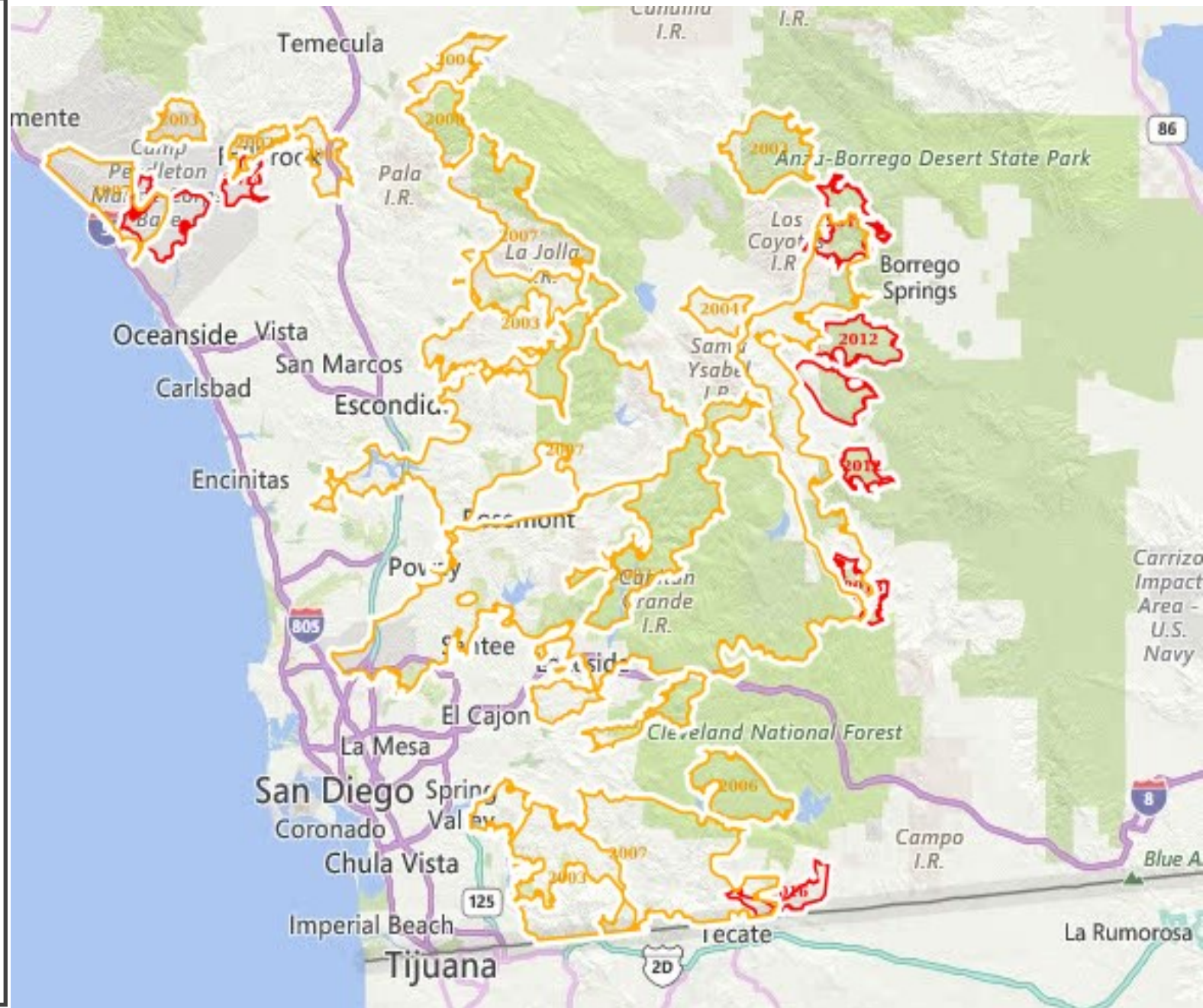
The 2007 Fires proved that 2003 was not the anomaly and was a sign of what was to come

Since 2007 the “Mega Damaging” Fires have become routine

# San Diego Fires 1980-1999



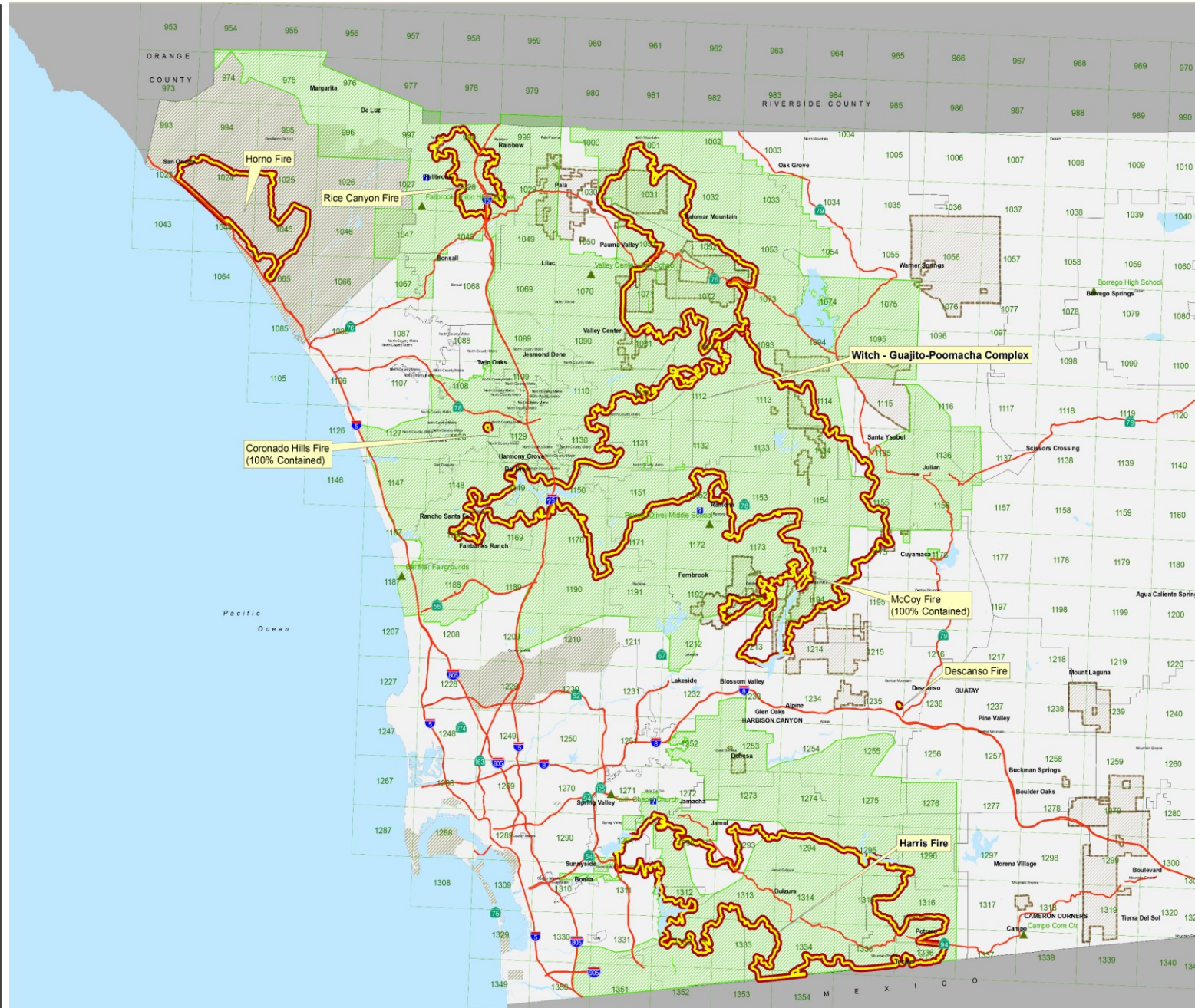
# San Diego Fires 2000-2017



# San Diego Fires 2003



# San Diego Fires 2007



# What Can We Learn From San Diego

San Diego had had 16 years to adapt and prepare

There are many lessons that can be gained from our experience

Although we have not had any “Mega Fires” Since 2007 San Diego continues to have a significant fire problem

Type I Complexity Incidents

- May 2014 Fires
- 2015 Border Fire
- 2017 Lilac Fire

Numerous Type III Extended Attack Fires



# What Have We Learned

Wildland Fires have become a  
Community Disaster

Wildland Fires cause severe economic  
loss measured in the Billions of Dollars

As good as we are we will never stop all  
fires, and must learn to live with fire

It takes a “village” approach

# What Have We Learned

Interagency Cooperation is a must

Regionalization of Services

It is no longer just a fire problem

Non traditional partners

Increased reliance on Technology and Data

Reliable and redundant Internet In Rural Areas

Situational Awareness

Cameras and real time intelligence

# What Have We Learned

Standardized Evacuation Procedures

Greater reliance on timely weather data and forecasting

- Santa Ana Wind Threat Index

Significant Shift to focusing on the fire before it occurs

Consolidation of functions under Community Risk Reduction (No more siloing)

- Pre Fire Division
- County Fire Marshall
- Law Enforcement
- Community Education
- GIS and Data Analysis Unit