

# BEST PRACTICES FOR FORMING PUBLIC-PRIVATE PARTNERSHIPS



Julie Leimbach and Terra Alpaugh

---

WILDFIRE SUMMIT

Sacramento, CA March 21, 2019

# SAMPLE STAKEHOLDER ASSESSMENT

## Polling to Learn From Each Other

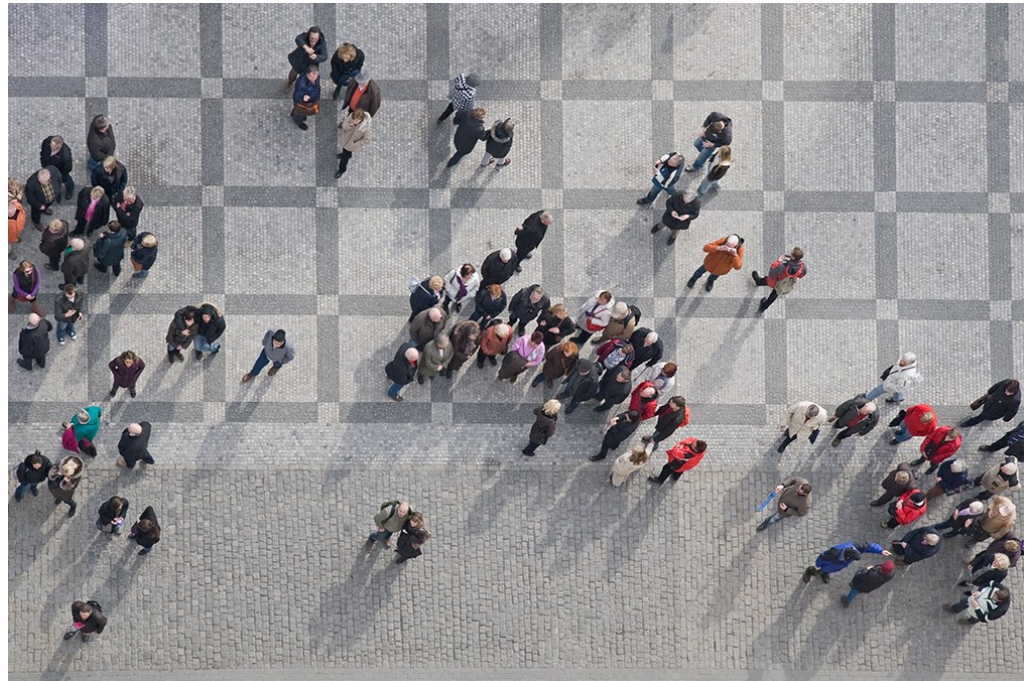
- » How can a public private partnership add value to priority technology efforts to reduce the threat of wildfire?



# STAKEHOLDER ASSESSMENT

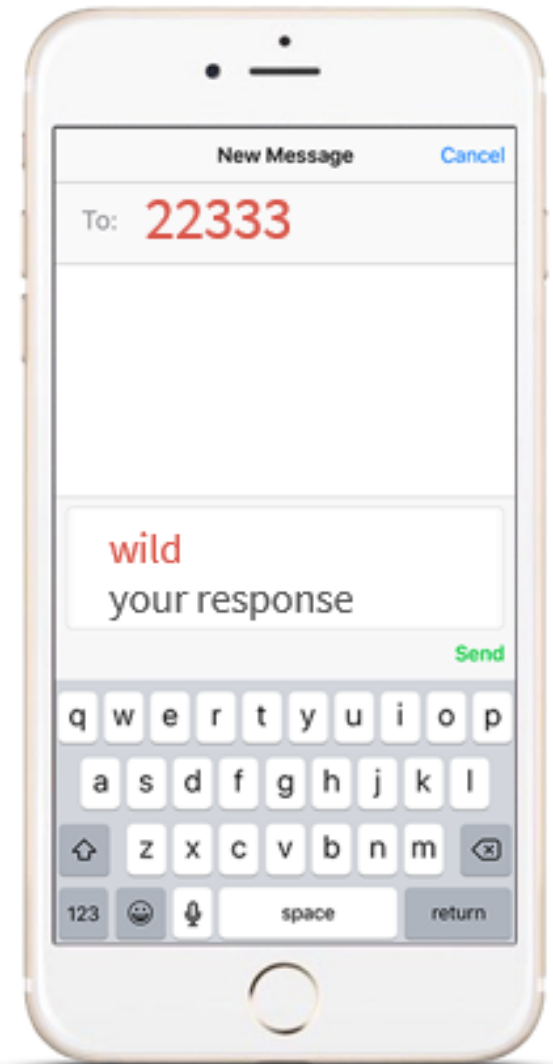
An Essential First Step for Building a Successful Partnership

- » Interests & Concerns
- » Issues & Priorities
- » Willingness & Capacity
- » Resources
- » Benefits and Incentives of Partnership
- » Feasibility of Agreement
- » Alternatives to Negotiation



# TEXT POLLING

- » Text to the number 22333
- » Text "**WILD**" (not case sensitive)
- » Receive confirmation message.
- » Do not click to the preview.
- » Stay in your text messaging app.
- » Stay tuned for first question.



# What is your favorite ice cream?

Vanilla

Chocolate

Start the presentation to see live content. Still no live content? Install the app or get help at [PollEv.com/app](https://PollEv.com/app)

Los Angeles, CA Portland, OR Riverside, CA Sacramento, CA San Diego, CA San Francisco, CA Washington, DC

# AMERICAN WIND WILDLIFE INSTITUTE

Relationships



Scientific  
Credibility



Influence



Public Sector:

Federal  
Agencies

State  
Agencies

Decision  
Making  
Body



Private Sector:

Wind Industry

Conservation  
Community

Scientists



# AMERICAN WIND & WILDLIFE INSTITUTE TECH AND SCIENCE PATHWAY



# PRELIMINARY ASSESSMENT QUESTIONS

Private Sector then Public Sector

» Multiple Choice:

What is the **top technology priority on this list** that would benefit from a partnership between public and private sectors to reduce the wildfire threat?

» Open-ended Response

What are **additional technology priorities** that would benefit from a partnership between public and private sectors to reduce the wildfire threat?



# Private Sector: What is the top technology priority on this list that would benefit from a partnership between public and private sectors to reduce the wildfire threat?

- Joint Research Plan and Collaboration
  - Catalog of Tech and Research Needs
  - Advance Technology Innovation Labs
    - Data Sharing
  - Return on Investment Assessment
    - Modeling and Validation
  - Matchmaking Tech to Users
    - Policy-making
  - Collective Prioritized Investment
    - Other Ideas

Start the presentation to see live content. Still no live content? Install the app or get help at [PollEv.com/app](https://PollEv.com/app)

# Private Sector: What are additional technology priorities that would benefit from a partnership between public and private sectors to reduce the wildfire threat?

Start the presentation to see live content. Still no live content? Install the app or get help at [PollEv.com/app](https://PollEv.com/app)

Los Angeles, CA Portland, OR Riverside, CA Sacramento, CA San Diego, CA San Francisco, CA Washington, DC

# Public Sector: What is the top technology priority on this list that would benefit from a partnership between public and private sectors to reduce the wildfire threat?

- Joint Research Plan and Collaboration
  - Catalog of Tech and Research Needs
  - Advanced Technology Innovation Labs
    - Data Sharing
  - Return on Investment Assessment
    - Modeling and Validation
  - Matchmaking Tech to Users
    - Policy-making
  - Collective Prioritized Investment
    - Other Ideas

Start the presentation to see live content. Still no live content? Install the app or get help at [PollEv.com/app](https://PollEv.com/app)

# Public Sector: What are additional technology priorities that would benefit from a partnership between public and private sectors to reduce the wildfire threat?

Start the presentation to see live content. Still no live content? Install the app or get help at [PollEv.com/app](https://PollEv.com/app)

## THANK YOU!

» Polling questions and responses will be made available to the conference organizers as a sample.

» Julie Leimbach

[jleimbach@kearnswest.com](mailto:jleimbach@kearnswest.com)

530-919-3102