

**CALIFORNIA PUBLIC UTILITIES COMMISSION**  
**Safety and Enforcement Division**  
**Electric Safety and Reliability Branch**

**Incident Investigation Report**

**Report Date:** May 13, 2019

**Incident Number:** E20171026-01

**Utility:** Pacific Gas and Electric Company (PG&E)

**Date and Time of the Incident:** October 8, 2017, 2145 hours

**Location of the Incident:** 1128 Bennett Lane  
Calistoga, CA 94515  
County: Napa

**Fatality / Injury:** 22 fatalities and one injury

**Property Damage:** \$179 million (PG&E restoration costs in Sonoma Division)

**Utility Facilities Involved:** Calistoga 1101, 12 kV Circuit

**Violation:** None identified

**I. Summary**

On October 8, 2017, at approximately 2145 hours, the Tubbs Fire started near 1128 Bennett Lane in the city of Calistoga in Napa County. The Tubbs Fire burned 36,807 acres, destroyed 5,643 structures, damaged 317 structures, and resulted in 22 fatalities and one injury. CAL FIRE's investigation eliminated all other fire causes, with the exception of an electrical caused fire from an unknown event affecting the private electrical system on the property.

**A. Rules Violated**

Based on SED's investigation described herein, SED did not identify any General Order violations by PG&E.

**B. Witnesses**

No.	Name	Title
1	Wilson Tsai	CPUC Investigator
2	Raymond Cho	CPUC Senior Utilities Engineer
3	John Martinez	CAL FIRE Lead Investigator
4	Jay Singh	PG&E Director
5	[REDACTED]	PG&E Supervisor
6	Maria Deluca	PG&E Claims Investigator
7	[REDACTED]	PG&E Vegetation Management Supervisor

### C. Evidence

No.	Source	Description
1	PG&E	Initial Incident Report 10/26/17
2	PG&E	20-day Incident Report, 11/27/17
3	CPUC	Site Observation Report, 11/6/17
4	CPUC	Field Notes, 10/23/17
5	CPUC	Field Notes 10/25/17
6	CAL FIRE	Incident Investigation Report and Attachments
7	CPUC	10/23/17 & 10/25/17 Site Visit Photos
8	CPUC	CAL FIRE Evidence Viewing, 11/6/18
9	CPUC	PG&E Evidence Collection, 8/16/18
10	PG&E	Data Request Response #1
11	PG&E	Data Request Response #2
12	PG&E	Data Request Response #3
13	PG&E	Data Request Response #4
14	PG&E	Data Request Response #5
15	PG&E	Data Request Response #6
16	PG&E	Data Request Response #7

## II. Background

On January 17, 2014, Governor Edmund G. Brown Jr. proclaimed a State of Emergency and directed state officials to take actions to mitigate conditions that could result from the drought and cause a fire. On February 18, 2014, in response to the proclamation, SED issued a letter to PG&E directing PG&E to take all practicable measures to reduce the likelihood of fires caused by utility facilities, including, increasing inspections, taking corrective actions and modifying protective schemes. On June 12, 2014, the California Public Utilities Commission (CPUC) issued Resolution ESRB-4 directing all Investor Owned Electric Utilities (IOU) to take remedial measures to reduce the likelihood of fires started by or threatening utility facilities. On October 30, 2015, Governor Edmund G. Brown Jr. declared a Tree Mortality State of Emergency due to tree mortality caused by the state's prolonged drought and bark beetle infestations.

On October 8, 2017 at approximately 2145 hours, the Tubbs Fire ignited at 1128 Bennett Lane in Calistoga. The fire destroyed 5,643 structures and resulted in 22 fatalities and one injury.

Weather station Santa Rosa RSAC1, located approximately 9.08 miles southwest from the incident location, recorded a peak wind speed and gust of 11.0 miles per hour (mph) and 30.0 mph, respectively. The ambient condition around the time of ignition was approximately 72 degrees Fahrenheit with a 12% relative humidity.<sup>1</sup>

Weather station Sonoma KSTS, located approximately 12.02 miles southwest from the incident location, recorded a peak wind speed of 20.0 mph. The ambient condition around the time of ignition was approximately 73 degrees Fahrenheit with an 11% relative humidity.<sup>1</sup>

Weather station HAWKEYE, located approximately 14.77 miles northwest from the incident location, recorded a peak wind speed and gust of 30.0 mph and 62.0 mph, respectively. The ambient condition around the time of ignition was approximately 66 degrees Fahrenheit with a 13% relative humidity.<sup>1</sup>

---

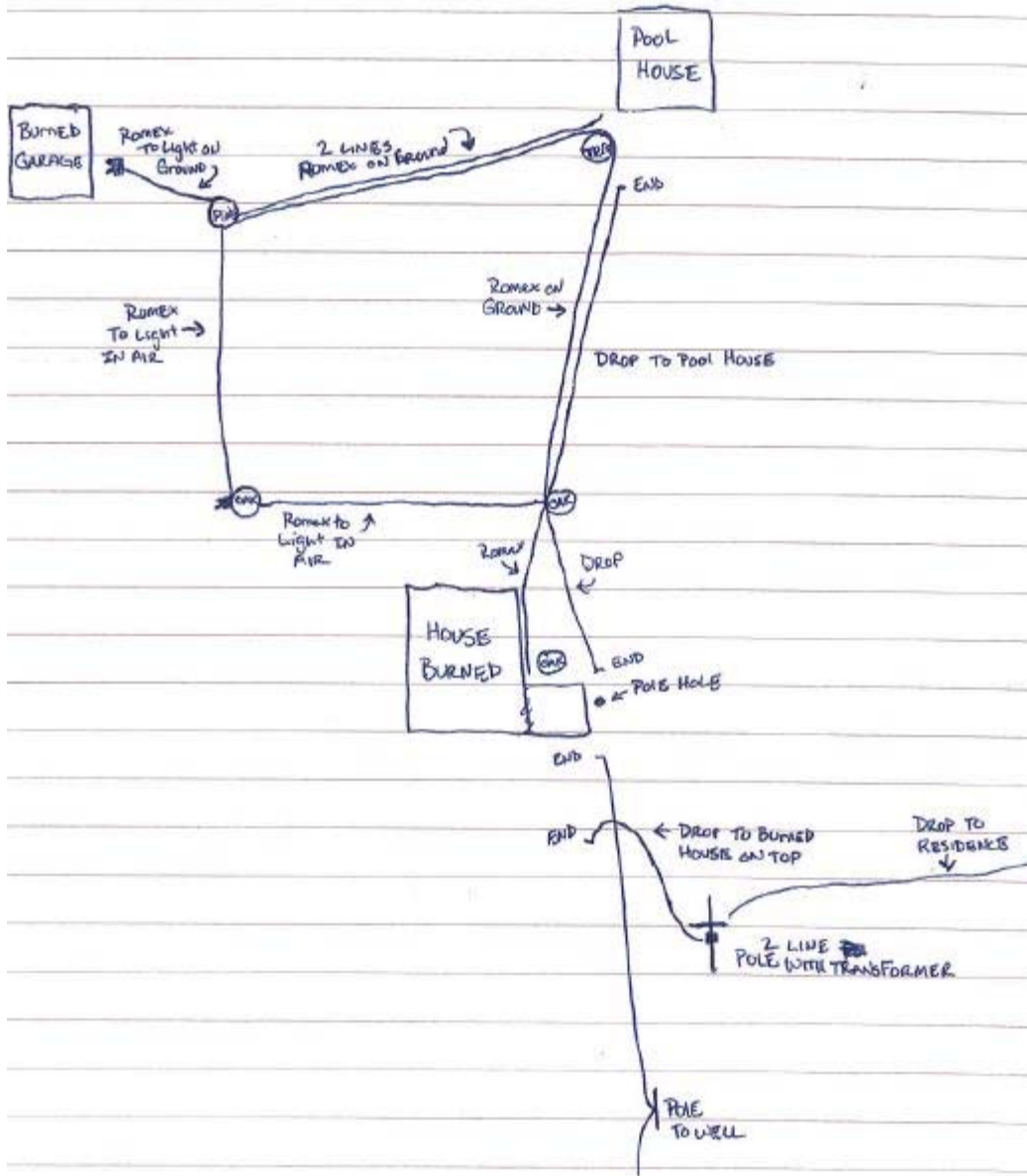
<sup>1</sup> Weather conditions per MesoWest ([www.mesowest.utah.edu](http://www.mesowest.utah.edu))



**Figure 1:** The origin of the fire via Google Maps.

On October 21, 2017 at 1225 hours, approximately 12 days after the fire started, PG&E reported the incident to the Safety and Enforcement Division (SED).

The property located at 1128 Bennett Lane had an extensive private electrical system that fed power from the residence to a pool house and garage nearby as well as a pump station down the hillside. CAL FIRE provided a graphical representation of the private electrical system relative to PG&E's facilities in Figure 2.



**Figure 2:** Graphical representation of the private electrical system at the incident location provided by CAL FIRE (not to scale)<sup>2</sup>.

### III. SED Review and Analysis

#### A. PG&E's Distribution Facilities Inspection Program

Rural areas, such as the incident area, are defined by General Order (GO) 165 as "those areas with a population of less than 1,000 persons per square mile." GO 165 requires biennial patrol inspections and detailed inspections at five-year intervals for rural areas, such as the incident location.

<sup>2</sup> CAL FIRE Tubbs Fire Investigation Report, Case number 17CALNU010045. Page 29, January 24, 2019.

GO 165 defines a patrol inspection as a “simple visual inspection” meant to identify “obvious” structural problems and hazards (e.g., leaning poles, loose crossarms, etc.) and may be carried out during other company business. GO 165 defines a detailed inspection as one where facilities are “carefully examined” to gather and record conditions of overhead facilities.

For the incident, SED reviewed the following PG&E distribution patrol inspection records and detailed inspection records:

- ... 2012 detailed inspection – No conditions or issues documented.
- ... 2014 detailed inspection – Resulted in eight work orders and six minor work corrections. Three work orders involved map corrections or changes. One work order was assigned Priority B and required adjust the vertical clearance on two primary phases. The vertical clearance on these two phases fell below the required vertical clearance as specified in General Order 95. One work order was assigned Priority E which required removing heavy strain by vegetation on a primary down guy wire. One work order was assigned Priority E and required the replacement of a decayed/rotten primary crossarm. Two work orders were assigned Priority F and involved replacing or installing High Voltage signs on poles.
- ... 2015 patrol inspections – No conditions or issues documented.
- ... 2017 patrol inspections – No conditions or issues documented.

The following PG&E categories were used to prioritize any work orders created as a result of the patrol or detailed inspection:

- ... Priority B work orders require a completion date within 30 days.
- ... Priority E work orders require a completion date within 3-12 months.
- ... Priority F work orders require a completion date by the next detailed inspection which would be five years after the most recent detailed inspection was conducted<sup>3</sup>.

## **B. PG&E’s Infrastructure**

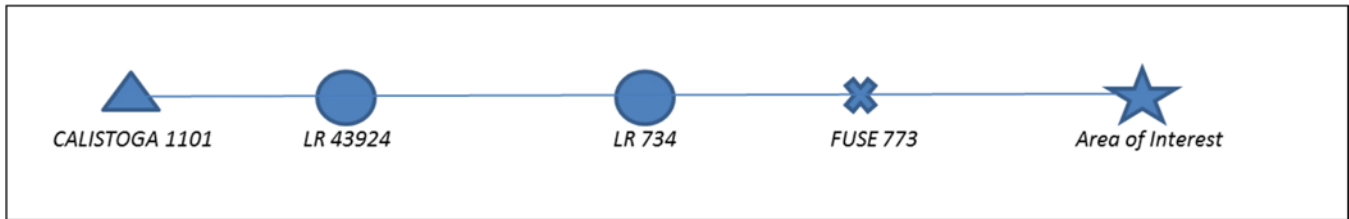
The incident conductors were size 6CU (Copper) and were installed in 1944 as part of PG&E’s Calistoga 1101 12 kV circuit. The subject conductors spanned approximately 200 feet for the span parallel to the road, 295 feet for the middle span, and 135 feet for the end span to the northwest. The conductor sag for each subject conductor at the time of the incident is unknown. The ground clearance for each subject conductor at the time of the incident is also unknown but PG&E provided the following response:

---

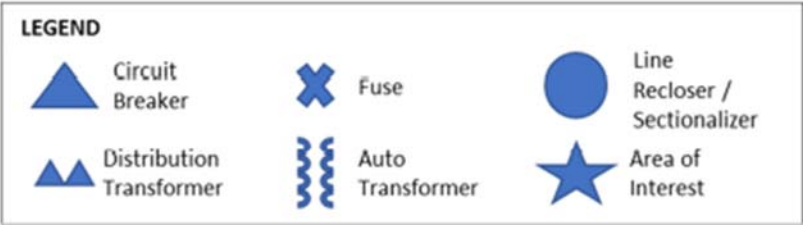
<sup>3</sup> PG&E TD-2305M Electric Distribution Preventative Maintenance (EDPM) Manual. Revised 04/01/16.

“PG&E has confirmed based on a reasonable search for ground clearance notifications on the subject circuits that no ground clearance issues, at the incident location...were identified from January 1, 2013, to October 8, 2017.”

A visual single-line diagram, Figure 3, provided by PG&E shows all protective devices between Calistoga Substation, which feeds the Calistoga 1101 circuit, and the incident area. The symbols are defined in the legend in Figure 4. The incident span was protected upstream by fuse 773, Line Recloser 734 (LR 570), Line Recloser 43924 (LR 43924) and finally the Calistoga 1101 circuit breaker. The brand and type of each protection device is listed in Table 1. A detailed circuit map identifying the locations of the protection devices and the substation relative to the incident location can be found in Attachment 4.



**Figure 3:** PG&E single-line diagram from the substation to the incident location. The diagram includes all protective devices in-between. Not to scale.



**Figure 4:** Legend for PG&E single-line diagram.

Device ID	Brand	Type
Calistoga 1101 CB	SEL, Alstom	251, MCGG
LR 43924	Cooper	Form 6 - PV4
LR 734	Cooper	Form 6 - PV4
Fuse 773	Part 44	25T

**Table 1:** List of all source side protection devices from the incident location to Calistoga Substation including brand and type.

The peak load on the Calistoga 1101 circuit within a 12-hour timeframe (six hours prior to and after the incident occurred) was 143.6A. PG&E annually calculates Summer Peak Load forecasts for the subsequent period between April 1 and October 31. The 2017 Summer Peak Load forecasted calculation for the incident circuit was 281.5A.

PG&E identified no abnormal configurations on the Calistoga 1101 circuit within 24 hours prior to the incident start time. An abnormal configuration occurs when additional customers are

temporarily added to a circuit. In addition, an abnormal circuit configuration can exist within the same circuit, where a loop exists on a circuit and electricity is sourced from a different section of the same circuit to feed that loop from a different location.

### **C. PG&E Equipment Operations and Timing**

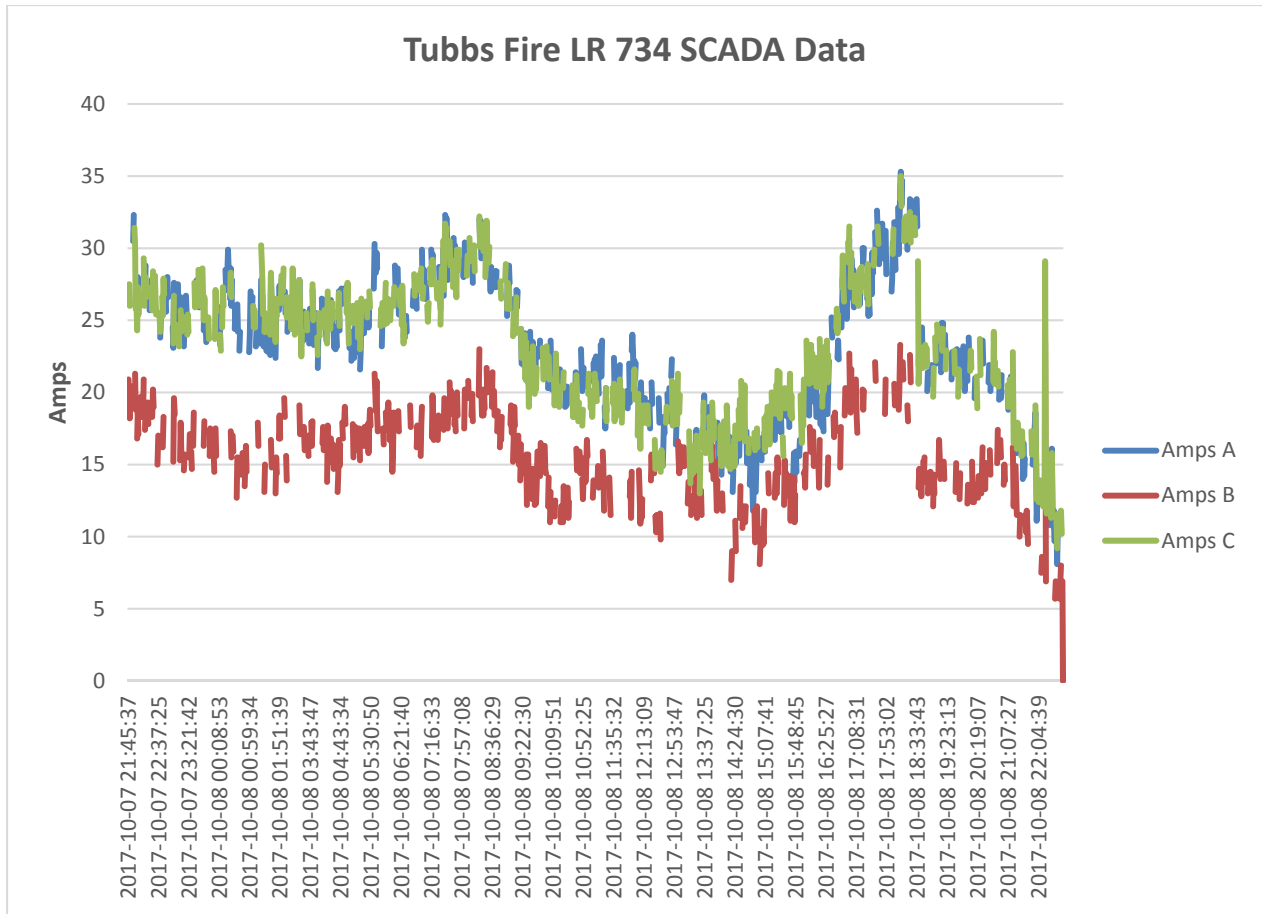
PG&E provided the timed data for the SCADA (Supervisory Control and Data Acquisition) devices upstream of the incident location to the substation circuit breaker. The time range of the data extends between 24 hours prior to and 48 hours after the CAL FIRE designated start time.

SCADA is software that allows for local and remote data collection in real-time and for defined time periods. SCADA is provided in protection devices along circuits to alert personnel as soon as there is a fault or issue on the line. SCADA allows the fault or issue to be isolated quickly and helps mitigate downtime.

The SCADA data for the nearest protection device from the incident location, LR 734, is presented in Figure 5.

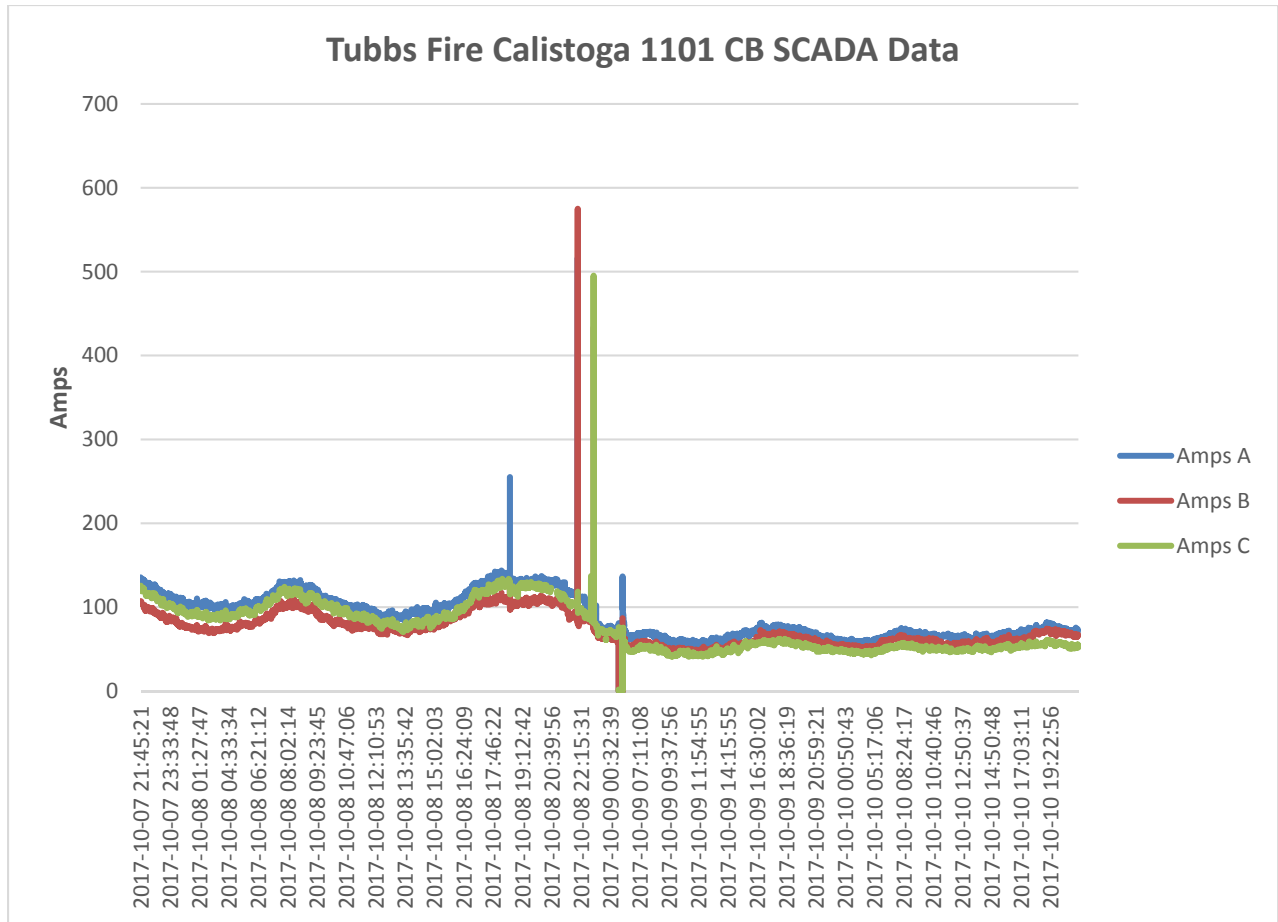
The SCADA data for the Calistoga 1101 substation circuit breaker is presented in Figure 6. Since the station circuit breaker is at the source of power to the circuit, the total amperage of current passing through the circuit breaker is significantly higher.





**Figure 5:** Plot of SCADA data from LR 734 for 24 hours to around the start time of the fire.

The load on all three phases is fairly consistent across the entire period, approximately 0-35A. However, there is a spike in amperage around the CAL FIRE designated start time of October 8, 2017, 2145 hours. The current drops to zero or near zero shortly after the incident start time.



**Figure 6:** Plot of SCADA data for Calistoga 1101 substation circuit breaker. The plot covers between 24 hours prior to and 48 hours after the incident start time.

As the circuit breaker sees the load for the entire Calistoga 1101 circuit, the amperage is significantly higher ranging from 0-600A. The peak load spikes around the start time of the fire with the B phase peaking at approximately 580A. The C phase also spikes shortly after with a peak of approximately 500A. These spikes are indicative of faults occurring downstream of the circuit breaker such as those caused by vegetation contact with conductor or conductors.

**i. Event Timeline**

PG&E established a timeline of specific equipment operations and actions of PG&E employees at or near the incident locations during the 12 hours prior to the incident start time until the date when CAL FIRE obtained PG&E facilities for evidence, CAL FIRE released the incident scene, or repair and/or restoration work was completed, whichever event came last.

1. October 8, 2017 2120 hours – Based on PG&E records, 18 smart meters downstream of Fuse 773 on the Calistoga 1101 Circuit recorded NIC Power Down events, and one smart meter at service point 3841237905 reported a Last Gasp event. The other 7 smart meters downstream of Fuse 773 have not reported data from October 8 through the end of 2017.

2. October 8, 2017 2145 hours – According to CAL FIRE, the Tubbs fire started at this time.
3. October 8, 2017 2324 hours – Based on PG&E records, Line Recloser 734, the closest line recloser upstream of the incident location, operated and locked out.
4. October 11, 2017 1625 hours – Based on PG&E records, a PG&E troubleman who was the first responder on scene found two of three fuses blown at Fuse 773, and per the troubleman, he replaced them.
5. October 11, 2017 1930 hours – Based on PG&E records, the troubleman reported closing Fuse 773 on a de-energized line.
6. October 11, 2017 1935 hours – Based on PG&E records, the troubleman also reported opening jumpers on the tap line feeding the incident location and on a pole-mounted transformer serving another structure on the south side of Bennett Lane.
7. October 11, 2017 2015 hours – Based on PG&E records, Line Recloser 734 was closed manually.
8. October 13, 2017 1310 hours – Based on PG&E records, Line Recloser 734 was manually opened.
9. October 14, 2017 1717 hours – Based on PG&E records, Line Recloser 734 was manually closed.
10. October 25, 2017 1634 hours – Based on PG&E records, the remaining customers without fire damage downstream of Fuse 773 were restored manually by closing jumpers to the transformer one span east of Fuse 773.
11. October 25, 2017 – CAL FIRE released the incident location.

#### **D. SED Site Visit and Evidence Viewing**

On October 23 & 25, 2017, SED conducted a site visit for the Tubbs Fire. The Site Visit Observation Report can be found in Attachment 4. The following observations were made during the site visit by SED:

*“In total, we documented seven poles – three were privately owned poles (see notes for measurements). The first pole closest to the structure was completely burned through the stub and was privately owned. This pole was fed from the meter with a private service conductor that led to another two private poles that eventually feed a water pump. The PG&E owned service drop attached to the first PG&E owned pole closest to the structure, fed a weather head on the structure from the PG&E transformer mounted on the pole. The PG&E primary span went from the first PG&E owned pole and heads down the hill to Bennett Lane.*

*As we walked the incident site, we noticed residential Romex wiring used to feed electricity to different areas of the property. This seemed to be an unpermitted installation because using this type of wiring is normally used inside structure*

walls. John pointed out that he could not identify any vegetation that may have caused a failure of the service conductors feeding the structure. Both service conductors feeding the weather head and coming from the meter were found on the ground. John also noted that during the incident a PG&E troubleman had replaced operated fuses at one of the poles on Bennett Lane.

*At the top of the privately owned pole that fed the water pump, we noticed significant charring which may represent an ignition source. The base of this pole was not charred as significantly.”*

On August 16, 2018, SED attended a PG&E evidence collection at the incident location. PG&E removed a conductor span, service meter, and tree limb from the neighboring residence down the hill at [REDACTED]. Both the conductor and meter were fed from the same PG&E facilities as 1128 Bennett Lane.



**Figure 7:** Collected PG&E Smart Meter for [REDACTED]

On November 6, 2018, SED conducted an evidence viewing of all evidence CAL FIRE took into possession for the Tubbs Fire. The entire list of evidence taken by CAL FIRE for the Tubbs Fire can be found in Attachment 2.

#### **IV. CAL FIRE's Investigation**

CAL FIRE's investigation report (Attachment 1) concluded the origin and cause of the Tubbs Fire:

*"In summary, after a thorough, systematic investigation, taking into account witness statements, expert opinion, physical evidence, collected data, and fire indicators, the origin of the Tubbs Fire is the primary residential structure and immediate area surrounding the structure at 1128 Bennett Lane. During my investigation, I eliminated all other causes for the Tubbs Fire, with the exception of an electrical caused fire originating from an unknown event affecting privately owned conductor or equipment."*

CAL FIRE found no Public Resource Code (PRC) violations by PG&E for the Tubbs Fire.

#### **V. Conclusion**

Based on SED's investigation described herein, SED did not identify any General Order violations by PG&E.

If SED becomes aware of additional information that could modify SED's findings in this Incident Investigation Report, SED may re-open the investigation and may modify this report or take further actions as appropriate.

#### **VI. Attachments**

Attachment A – CAL FIRE Investigation Report Case Number 17CALNU010045

Attachment B – CAL FIRE Evidence List

Attachment C – CPUC Site Visit Observation Report

Attachment D – PG&E Calistoga 1101 Circuit Map

# **ATTACHMENT A**

**CAL FIRE Investigation Report  
Case Number 17CALNU010045**

# ***CAL FIRE***



## **CALIFORNIA DEPARTMENT OF FORESTRY AND FIRE PROTECTION SONOMA-LAKE NAPA UNIT**

1199 Big Tree Road  
St. Helena, CA 94574

# **INVESTIGATION REPORT**

**CASE NUMBER:** 17CALNU010045

**CASE NAME:** Tubbs

**DATE:** October 8, 2017

**INCIDENT TYPE:** Wildland Fire

**INCIDENT INVESTIGATOR(s):** John MARTINEZ, Battalion Chief – CZU  
Vince BERGLAND, Battalion Chief, CSR  
Matt FRANKLIN, Fire Captain, BDU  
Mark FRITS, Battalion Chief - TGU  
Scott LOHSE, Fire Captain – TGU  
Greg ROATH, Fire Captain – SKU  
Mike THOMPSON, Battalion Chief - CNR

1 **1 - VIOLATION(S):**

2 None

3



1 **2 - SUMMARY:**

2 On the evening of Sunday, October 8, 2017 a red flag warning was in effect throughout  
3 the North Bay including Napa County. Temperatures that evening were in the 60's to  
4 lower 70's, with humidity in the 10-18% range. Wind models later prepared by CAL  
5 FIRE Northern Operations Predictive Services estimated ridgetop winds could have  
6 reached 55 to 90 mph. At approximately 9:41 P.M. Michelle HICKMAN (M. HICKMAN),  
7 a resident of Calistoga, CA reported a fire occurring in the area of Hwy 128 and Tubbs  
8 Road. The fire was named the Tubbs Fire and eventually burned 36,807 acres in both  
9 Napa and Sonoma Counties and destroyed 5636 structures including 4651 residential  
10 structures, 94 commercial properties and 891 outbuildings. The fire damaged an  
11 additional 230 residential structures, 22 commercial structures and 65 outbuildings. The  
12 Tubbs Fire included 22 civilian fatalities.

13

14 On October 9, 2017, I arrived at approximately 2:30 P.M. in Napa County to assist with  
15 the origin and cause investigation of the Tubbs Fire. On October 11, 2017 I was  
16 assigned as the lead investigator to conduct an origin and cause investigation for the  
17 Tubbs Fire. During the course of my investigation I located a General Origin Area  
18 (GOA) and subsequently a Specific Origin Area (SOA) on a privately-owned parcel off  
19 of Bennett Lane in Calistoga, CA. After a thorough, systematic investigation, taking into  
20 account witness statements, opinions of experts, physical evidence, collected electronic  
21 data, and fire direction indicators, the SOA of the Tubbs fire is near the primary  
22 residential structure and immediate area surrounding the structure at 1128 Bennett  
23 Lane. During my investigation, I eliminated all other causes for the Tubbs Fire, with the  
24 exception of an electrical caused fire originating from an unknown event affecting  
25 privately owned conductor or equipment.

26

1 **3 - SUBJECT(S):**

2 None

3

1 **4 - VICTIMS:**

2

3 The Tubbs Fire included 22 civilian fatalities, listed below (by age and location of death):

4

5 •

6 •

7 •

8 •

9 •

10 •

11 •

12 •

13 •

14 •

15 •

16 •

17 •

18 •

19 •

20 •

21 •

22 •

23 •

24 •

25 •

26 •

27

28

29

30



1 **WITNESSES:**

2

3 W1

4 Michelle HICKMAN (M. HICKMAN)

5 [REDACTED]  
6 [REDACTED]

7 DOB: [REDACTED]

8 [REDACTED]

9 M. HICKMAN was the first reporting party to the Tubbs Fire. She can testify to what she  
10 saw from her residence the night of the fire on October 8, 2017.

11

12 W2

13 Ron RISI (R. RISI)

14 [REDACTED]  
15 [REDACTED]

16 DOB: [REDACTED]

17 [REDACTED]  
18 [REDACTED]

19 R. RISI can testify his power went off sometime after 9:00 P.M. on October 8, 2017. He  
20 also received a call from S. THOMPSON at an unknown time after 9:00 P.M. telling him  
21 there was a fire on the hillside and to get out. R. RISI can testify when he left his  
22 residence, he noticed the fire was to the south on the west side of Bennett Lane.

23

24 W3

25 Shawn THOMPSON (S. THOMPSON)

26 [REDACTED]  
27 [REDACTED]

28 DOB: [REDACTED]

29 S. THOMPSON can testify that he was awoken by his wife on October 8, 2017, telling  
30 him there was a fire. He can also testify he observed flames in the backyard coming  
31 down the hill towards him and after he evacuated the house and parked on Hwy 128, he

1 noticed fire above his house coming down from where the ZINK'S house was.

2

3 W4

4 Linda THOMPSON (L. THOMPSON)

5

6

7 DOB: [REDACTED]

8 L. THOMPSON can testify she was in her house on the evening of October 8, 2017  
9 when she heard smoke alarms began to ring and she could smell smoke. When leaving  
10 the house there were embers flying and she couldn't tell where they were coming from.  
11 She called 911 at 9:52 P.M. as she and S. THOMPSON drove down the driveway.

12

13 W5

14 Roger LUTZ III (R. LUTZ)

15 Napa County Fire

16 1199 Big Tree Road

17 St. Helena, CA 94574

18 DOB: [REDACTED]

19 [REDACTED]

20 R. LUTZ can testify on October 8, 2017 he was on E-221 on Division Z, and responded  
21 to 1200 Bennett Lane, where he observed fire backing down slope towards the  
22 residence.

23

24 W6

25 Jason TAMAGNI

26 Calistoga Fire Dept.

27 1113 Washington Street

28 Calistoga, CA 94515

29 [REDACTED]

30 TAMAGNI was one of the first fire resources on scene on October 8, 2017. He can  
31 testify to fire behavior in the area of Hwy 128 and Bennett Lane.

1  
2  
3  
4  
5  
6  
7  
8  
9  
10  
11  
12  
13  
14  
15  
16  
17  
18  
19  
20  
21  
22  
23  
24  
25  
26  
27  
28  
29  
30  
31

W7  
Jaime OROZCO  
Calistoga Fire Department  
1113 Washington Street  
Calistoga, CA 94515  
707-942-2840

OROZCO can testify he was on E-419 the night of October 8, 2017. He observed the fire on both sides of Hwy 128, from a wind driven fire from Bennett Lane.

W8  
Mark RHODES  
Electrical Engineer  
3460 Zion Canyon Ct.  
Pleasanton, CA 94588

[REDACTED]

RHODES can testify to the electrical systems near the water pump and private pole 1.

W9  
Luis Alberto VARGAS-RIVERA (VARGAS)

[REDACTED]

DOB: [REDACTED]

[REDACTED]

On October 8, 2017, at approximately 10:05 P.M. VARGAS observed a fire on the hill above 3452 Hwy 128. He can testify the fire had not yet burned onto the Wheeler Farm, where he works.

W10  
Dave KAROLY  
CAL FIRE LIDAR  
LE80 (Rev. 7/2011)

1 1300 U. Street  
2 Sacramento, CA 94244  
3 916-324-1644  
4 Assisted in documenting the scene using LIDAR.

5  
6 W11  
7 Dan GREGORY  
8 CAL FIRE LIDAR

9 1300 U. Street  
10 Sacramento, CA 94244  
11 916-323-1044  
12 Assisted in documenting the scene using LIDAR.

13  
14 W12  
15 Susan SWENSON (S. SWENSON)

16 [REDACTED]  
17 [REDACTED]  
18 [REDACTED]

19 DOB: [REDACTED]

20 [REDACTED]

21 S. SWENSON can testify she had not been on the property since September 3, 2017  
22 and is unaware of any problems associated with the property. She can testify Mike  
23 ANDREWS is on the property at least once per week to make sure everything is  
24 working properly and maintained.

25  
26 W13  
27 Mike ANDREWS

28 Caretaker for 1128 Bennett Lane, hired by property owner.

29 [REDACTED]  
30 [REDACTED]

31 [REDACTED]

1 ANDREWS is the caretaker for the 1128 Bennett Lane property, hired by the ZINK  
2 family. ANDREWS can testify to the maintenance and condition of the property, prior to  
3 the Tubbs Fire.

4

5 W14

6 Gino DEGRAFFERIED

7 CAL FIRE Battalion Chief

8 DEGRAFFERIED was the first CAL FIRE Battalion Chief at scene and can testify to his  
9 observations when he arrived on scene approximately 20 minutes after the initial  
10 dispatch, including an estimation of wind conditions and size of the fire.

11

12 W15

13 Jim NOLT

14 Electrical Engineer

15 107 Blue Canyon Way

16 Folsom, CA 95630

17 [REDACTED]

18 NOLT can testify to his observations and analysis of the electrical systems identified  
19 during the Tubbs Fire Investigation, as outlined in his report.

20

21 W16

22 Amy HUNTER

23 Officer, Napa Police Department

24 1539 1<sup>st</sup> Street

25 Napa, CA 94559

26 707-257-9223

27 HUNTER can testify to information she received regarding a subject seen on Silverado  
28 Trail Road the day of the fire, miles from the GOA.

29

30 W17

31 Dale HOSKINS  
LE80 (Rev. 7/2011)



1 Police Officer, Calistoga Police Department

2 1234 Washington Street

3 Calistoga, CA 94515

4 707-942-2810

5 HOSKINS was the first public officer at scene, prior to firefighters, where he took a  
6 photograph of the fire. He can testify to his observations.

7

8 W18

9 Lucinda "Cindy" Ann YANT (L. YANT)

10 [REDACTED]  
11 [REDACTED]  
12 [REDACTED]  
13 [REDACTED]

14 DOB: [REDACTED]

15 L. YANT can testify she was home on the night of October 8, 2017 and observed a fire  
16 coming towards her residence. L. YANT provided photographs showing her  
17 observations.

18

19 W19

20 Nicholaus LUTZ (N. LUTZ)

21 Deer Park Volunteer Fire Department

22 19710 Mountain Meadows North

23 Hidden Valley Lake, CA 95467

24 DOB: [REDACTED]

25 [REDACTED]

26 N LUTZ can testify to the where the fire was when he arrived on scene assigned to  
27 Engine 21, with the Deer Park Volunteer Fire Department. He can also testify to the  
28 fact the fire was backing northeast along Bennett Lane, and had not reached the 1200  
29 Bennett Lane residence until late that evening and into the early morning hours of  
30 October 9, 2017.

31

1 W20

2 Anne MISSEN

3 [REDACTED]  
4 [REDACTED]  
5 [REDACTED]

6 MISSEN can testify she saw the fire burn slowly from the south to the north, near the  
7 area of [REDACTED] Bennett Lane, as viewed from her residence. MISSEN describes the fire  
8 as fighting against the wind and slowly moving from left (south) to right (north)  
9 throughout the night and the next day.

10

11 W21

12 Rob EBLING

13 Calistoga Fire Department

14 1113 Washington Street

15 Calistoga, CA 94515

16 707-337-2882

17 EBLING responded to the incident on the initial dispatch. He can testify the fire was  
18 backing northeast on the hillside above Bennett Lane and when he arrived on scene it  
19 had backed as far as the PG&E pole 1 on Bennett Lane.

20

21 W22

22 Mark OLACHEA

23 [REDACTED]  
24 [REDACTED]  
25 [REDACTED]

26 OLACHEA took photographs in the area of Tubbs and Bennett Lane, on October 9,  
27 2017.

28

29 W23

30 Ken MILLER, CFI

31 Senior Fire Investigator  
LE80 (Rev. 7/2011)

1 Fire Investigation Unit  
2 Liberty Mutual Insurance  
3 175 Berkeley Street  
4 Boston, MA 02116

5 Cell: [REDACTED]

6 MILLER took photographs of tripped fuses on Bennett Lane and provided photographs  
7 to the investigation team.

8

9 W24

10 Stephanie LONGTON

11 Bennett Lane Winery

12 405 Parkview Drive

13 Healdsburg, CA 95448

14 [REDACTED]

15 LONGTON provided video footage from a camera on the winery property showing first  
16 sign of fire on hillside at approximately 9:36 P.M. on October 8, 2107.

17

18 W25

19 Whitney RAMPP

20 [REDACTED]  
21 [REDACTED]

22 [REDACTED]

23 DOB: [REDACTED]

24 RAMPP can testify she heard a transformer blow sometime before 10:00 P.M. A short  
25 time later she saw a fire on the hill in the area of Bennett Lane.

26

27 W26

28 Jan RISI (J. RISI)

29 [REDACTED]  
30 [REDACTED]  
31 [REDACTED]

1 J. RISI was with her husband, R. RISI, when they left their residence after being told by  
2 S. THOMPSON there was a fire off Bennett Lane. J. RISI can testify to her  
3 observations when she left her residence.

4  
5 W27

6 Peggy OKELLY

7 [REDACTED]  
8 [REDACTED]  
9 [REDACTED]

10 DOB: [REDACTED]

11 OKELLY can testify that on October 8, 2017 she saw the fire backing towards her  
12 residence sometime after 10:00 P.M.

13  
14 W28

15 Theresa JACKSON

16 [REDACTED]  
17 [REDACTED]

18 DOB: [REDACTED]

19 [REDACTED]

20 JACKSON can testify she was at 3468 Hwy 128 on October 8, 2017, and at  
21 approximately 9:55 P.M., she walked to the south side of the residence and saw the hill  
22 on fire above the pig farm at 3452 Hwy 128 ([REDACTED] residence).

23  
24 W29

25 Larry ANDERSON

26 [REDACTED]  
27 [REDACTED]

28 DOB: [REDACTED]

29 [REDACTED]

30 ANDERSON can testify he observed fire on the hillside west of Bennett Lane, south of  
31 1177 Bennett Lane, sometime after 10:05 P.M. on night of October 8.

1  
2  
3  
4  
5  
6  
7  
8  
9  
10  
11  
12  
13  
14  
15  
16  
17  
18  
19  
20  
21  
22  
23  
24  
25  
26  
27  
28  
29  
30  
31

W30

Anthony Morgan PERLISS

[REDACTED]

DOB: [REDACTED]

PERLISS can testify that between 9:00 P.M. and 10:00 P.M., on October 8, 2017, he was at home and noticed the lights flicker 2 to 3 times. At approximately 10:10 P.M. PERLISS went outside and while in the driveway looking south, he observed a glow toward the pergola, south of the residence. Shortly after, he observed fire south of a pergola below his house, burning low to the ground with little to no flames. He notified his girlfriend about the fire at 10:37 P.M.

W31

Dan HICKMAN (D. HICKMAN)

[REDACTED]

DOB: [REDACTED]

D. HICKMAN can testify he was home on the evening of October 8, 2017. While outside around 9:30 P.M., he heard a pop or explosion and was aware of a light above him to the north. He estimated the light occurred between 9:27 and 9:28 P.M. He didn't look north to see what it was.

W32

Cigi Glynn RICH

[REDACTED]

DOB: [REDACTED]

1 RICH can testify she first saw a fire on October 8, 2017 at approximately 9:45 P.M.,  
2 across the valley from where she lived. RICH also took pictures of what she could see  
3 from the deck of her residence.

4  
5 W33

6 Jordan JEFFERIES (J. JEFFERIES)

7 [REDACTED]  
8 [REDACTED]

9 J. JEFFERIES lives with RICH, can testify he first saw a fire on October 8, 2017 at  
10 approximately 9:45 P.M., across the valley from where he lives.

11  
12 W34

13 Eric JEFFERIES (E. JEFFERIES)

14 Father of J. JEFFERIES

15 [REDACTED]  
16 [REDACTED]

17 DOB: [REDACTED]

18 [REDACTED]

19 E. JEFFERIES can testify he was at [REDACTED] Bennett Lane, and in bed on the evening of  
20 October 8, 2017, when he noticed light coming through his window at 9:44 P.M. He got  
21 out of bed and observed the fire.

22  
23 W35

24 Charles Milton DARRALL (C. DARRALL)

25 [REDACTED]  
26 [REDACTED]

27 [REDACTED]

28 DOB: [REDACTED]

29 C. DARRALL can testify he heard a boom at approximately 10:15 P.M. and saw a glow  
30 in the area of Bennett Lane.

31  
LE80 (Rev. 7/2011)

1 W36

2 Shannon Lynn DARRALL (S. DARRALL)

3 [REDACTED]  
4 [REDACTED]  
5 [REDACTED]

6 DOB: [REDACTED]

7 S. DARRALL can testify she heard a boom at approximately 10:15 P.M. and saw a glow  
8 in the area of Bennett Lane.

9

10 W37

11 Charlie BROWN JR.

12 [REDACTED]  
13 [REDACTED]

14 DOB [REDACTED]

15 [REDACTED]

16 BROWN JR can testify the electrical wiring leading from the house at 1200 Bennett  
17 Lane to the viewing platform on the property was not active and has not been in use for  
18 years.

19

20 W38

21 Katie SERENI

22 [REDACTED]  
23 [REDACTED]

24 DOB: [REDACTED]

25 SERENI can testify she observed a limb catch fire on powerlines adjacent to her  
26 residence at [REDACTED] Lerner Drive prior to the Tubbs fire. The limb was extinguished and  
27 there was no fire spread.

28

29 W39

30 Robert TRUMBALL

31 PG&E

LE80 (Rev. 7/2011)

1 77 Beale Street  
2 P.O. Box 415-973-1000  
3 San Francisco, CA 94177  
4 TRUMBALL assisted in the removal of smart meters on Bennett Lane.  
5  
6 W40  
7 Daniel DAVIS  
8 PG&E  
9 77 Beale Street  
10 P.O. Box 415-973-1000  
11 San Francisco, CA 94177  
12 DAVIS assisted in the removal of smart meters on Bennett Lane.  
13  
14 W41  
15 Lee Palmer  
16 Deputy Director, Safety and Enforcement Division  
17 California Public Utilities Commission  
18 505 Van Ness Avenue  
19 San Francisco, CA 94102  
20 415-703-2369  
21 PALMER was present at 1128 Bennett Lane on October 23, 2017 and observed the  
22 collection of PG&E equipment by CAL FIRE investigators.  
23  
24 W42  
25 Raymond Cho  
26 Utilities Engineer, Electric Safety Reliability Branch  
27 505 Van Ness Avenue  
28 San Francisco, CA 94102  
29 415-703-2236  
30 CHO was present at 1128 Bennett Lane on October 23, 2017 and observed the  
31 collection of PG&E equipment by CAL FIRE investigators.



1

2 W43

3 James P FRANTZ

4 Frantz Law Group

5 3558 Round Barn Blvd, Suite 215

6 Santa Rosa, CA 95403

7 707-239-6316

8 FRANTZ can testify to two separate accounts of alternative origin areas for the Tubbs

9 Fire, determined by outside investigators.

10

11 Attachment E, Vicinity Map, identifies the location of witnesses and their proximity to

12 1128 Bennett Lane.

13

14 **INVESTIGATORS:**

15

16 John MARTINEZ (MARTINEZ)

17 CAL FIRE, Battalion Chief

18 6059 Hwy 9

19 Felton, CA 95018

20 831-254-1720

21

22 Mark FRITS

23 CAL FIRE, Battalion Chief

24 604 Antelope Blvd.

25 Red Bluff, CA 96080

26 530-528-5199

27

28 Mike THOMPSON (M. THOMPSON)

29 CAL FIRE, Battalion Chief

30 6105 Airport Road

31 Redding, CA 96002

LE80 (Rev. 7/2011)

1 530-226-3477  
2  
3 Scott LOHSE  
4 CAL FIRE, Fire Captain  
5 604 Antelope Blvd.  
6 Red Bluff, CA 96080  
7 530-528-5199  
8  
9 Vince BERGLAND  
10 CAL FIRE, Battalion Chief  
11 1234 E. Shaw  
12 Fresno, CA 93710  
13 559-243-4115  
14  
15 Greg ROATH  
16 CAL FIRE, Fire Captain  
17 1809 Fairlane Road  
18 Yreka, CA 96097  
19 530-842-3516  
20  
21 Matt FRANKLIN  
22 CAL FIRE, Fire Captain  
23 3800 N. Sierra Way  
24 San Bernardino, CA 92405  
25 909-881-6922  
26  
27 Jeremy MONROE  
28 CAL FIRE, Deputy Chief  
29 Sacramento Headquarters  
30 State Threat Assessment Center (STAC)  
31 916-636-2920  
LE80 (Rev. 7/2011)

- 1
- 2 Darren STEWART
- 3 CAL FIRE, Fire Captain
- 4 875 Cypress Avenue
- 5 Redding, CA 96001
- 6 530-225-2421
- 7
- 8 Kyle STEIS
- 9 CAL FIRE, Fire Captain
- 10 2210 West College Avenue
- 11 Santa Rosa, CA 95401
- 12 707-576-2341
- 13
- 14 Brandon BERTOLINO
- 15 CAL FIRE, Fire Captain
- 16 2210 West College Avenue
- 17 Santa Rosa, CA 95401
- 18 707-339-6618
- 19
- 20

1 **5 - EVIDENCE:**

2

3 A series of photographs were taken and are included in the attachments section D.  
4 Original photographs are stored as evidence on various media (DVD/SD card/thumb  
5 drive).

6

7 A series of photographs were collected from witnesses and are contained as  
8 attachments (see attachment D).

9

10 A series of video clips from fixed cameras and cellular phone was provided to and  
11 collected by investigators. Video clips have been placed on a thumb and stored as  
12 evidence.

13

14 Physical items of evidence were collected from the scene by Investigators. Refer to  
15 evidence log for a list of items collected (see attachment F).

16

1 **6 – CONDITION(S):**2 **Weather:**

3 Weather was not recorded by on scene resources the night of October 8, due to all  
4 responding resources commitment to the ongoing and developing fire emergency. For  
5 this reason weather conditions were extracted from two CAL FIRE weather stations in  
6 the area. Below are summaries of the Atlas Peak Remote Automated Weather Station  
7 (RAWS) and the Santa Rosa RAWS for October 8, 2017. The Atlas Peak weather  
8 station is at an elevation of 1934 feet and approximately 21 miles southeast from the  
9 Tubbs Fire origin. The Santa Rosa weather station is at an elevation of 576 feet and  
10 approximately 10 miles southwest from the Tubbs Fire origin. On October 8, 2017 at  
11 9:00 P.M. the temperature at the Atlas Peak RAWS was 62 degrees, winds were out of  
12 the north/northeast at 13 mph with gusts to 30 mph. On October 8, 2017 at 9:00 P.M.  
13 the temperature at the Santa Rosa RAWS was 62 degrees, winds were out of the  
14 northeast at 15 mph with gusts to 41 mph.

15

**Atlas Peak California**

Daily Summary for

**8-Oct-17**

Hour of Day Ending at L.S.T.	Total Solar Rad. ° ly.	Wind			Air	Fuel	Fuel	Relative	Dew Point	Wet Bulb	Total Precip. inches
		Ave. mph	V. Dir. Deg	Max. mph	Temperature Mean Deg. F.	Temperature Mean Deg. F.	Moisture Mean Percent	Humidity Mean Percent			
1:00 AM	0	4	32	10	63	60	6.3	43	40	50	0
2:00 AM	0	5	26	8	63	60	6.8	45	41	51	0
3:00 AM	0	6	34	12	62	59	7	43	39	49	0
4:00 AM	0	4	68	13	61	58	7.1	39	36	48	0
5:00 AM	0	5	48	16	61	58	7.1	36	34	47	0
6:00 AM	0.3	6	49	13	62	58	7.3	35	34	47	0
7:00 AM	9.4	5	4	12	65	62	7.2	29	32	48	0
8:00 AM	26.8	8	359	14	65	68	7.2	29	32	48	0
9:00 AM	43.3	7	18	20	69	74	6.4	23	30	49	0
10:00 AM	56.9	10	12	21	71	77	6	21	29	49	0
11:00 AM	65.3	9	28	21	74	84	5.3	14	22	49	0
12:00 PM	68.5	10	20	23	74	84	4.7	13	20	48	0
1:00 PM	66.5	10	31	19	74	84	4.2	13	20	48	0
2:00 PM	58.8	10	30	21	74	83	3.9	14	22	49	0
3:00 PM	46.2	8	11	20	73	81	3.6	14	21	48	0
4:00 PM	30.3	5	5	18	71	76	3.5	15	21	47	0
5:00 PM	12.3	8	344	16	67	67	3.5	16	19	45	0
6:00 PM	0.4	9	0	19	64	62	3.7	16	17	43	0
7:00 PM	0	13	1	26	65	62	3.7	16	18	44	0
8:00 PM	0	11	29	32	64	62	3.7	15	15	43	0
9:00 PM	0	13	21	30	62	60	3.7	17	17	42	0
10:00 PM	0	13	14	28	62	59	3.9	16	15	42	0
11:00 PM	0	17	7	31	61	59	3.9	15	13	41	0
12:00 AM	0	14	18	32	60	58	3.9	16	14	41	0

1  
2

### Santa Rosa California

Daily Summary for

8-Oct-17

Hour of Day Ending at L.S.T.	Total Solar Rad. ° ly.	Wind			Air Tempera ture Mean Deg. F.	Fuel Tempera ture Mean Deg. F.	Fuel Moisture Mean Percent	Relative Humidity Mean Percent	Dew Point Deg. F.	Wet Bulb	Total Precip. inches
		Ave. mph	V. Dir. Deg	Max. mph							
1:00 AM	0	3	12	10	58	55	6.7	64	46	51	0
2:00 AM	0	5	355	13	57	54	7.1	62	44	50	0
3:00 AM	0	4	12	14	56	54	7.4	61	43	48	0
4:00 AM	0	2	39	11	55	53	7.8	61	42	48	0
5:00 AM	0	6	4	14	56	53	8.1	58	41	48	0
6:00 AM	0.2	5	358	10	55	52	8.4	59	41	47	0
7:00 AM	7.2	2	303	11	59	60	8.5	52	41	49	0
8:00 AM	21.5	2	236	8	64	70	8.9	47	43	52	0
9:00 AM	34.1	3	286	9	69	79	8.7	36	41	53	0
10:00 AM	47.7	4	256	7	73	85	8	31	41	54	0
11:00 AM	55.9	4	233	9	77	89	7.3	27	40	56	0
12:00 PM	59.3	14	68	24	82	88	7.2	9	18	51	0
1:00 PM	56	8	65	19	84	94	6	6	10	51	0
2:00 PM	51	8	52	22	84	86	5.9	4	1	49	0
3:00 PM	30.3	7	47	16	83	85	5.4	5	5	50	0
4:00 PM	25.1	11	62	24	79	81	4.9	9	15	49	0
5:00 PM	9.4	10	55	27	75	73	4.7	12	19	48	0
6:00 PM	0.3	6	55	23	72	69	4.6	13	18	47	0
7:00 PM	0	5	37	21	72	68	4.6	14	20	47	0
8:00 PM	0	11	48	30	72	69	4.6	12	17	47	0
9:00 PM	0	15	52	41	71	69	4.6	11	14	46	0
10:00 PM	0	14	41	40	71	69	4.5	11	14	46	0
11:00 PM	0	24	58	51	70	69	4.5	11	13	45	0
12:00 AM	0	24	59	53	70	69	4.4	11	13	45	0

1  
2  
3  
4  
5  
6  
7  
8  
9  
10  
11

1 **7 – EQUIPMENT:**

2

3 Pacific Gas & Electric (PG&E) and privately owned electrical equipment was collected  
4 as evidence. Refer to evidence log (see attachment F) for a list of items collected.

5



1 **8 - PROPERTY:**

2

3 The Tubbs Fire originated on the following property:

4

5 APN: 017-120-005-000

6 Address: 1128 Bennett Lane, Calistoga, CA 94515

7 Owner: [REDACTED]

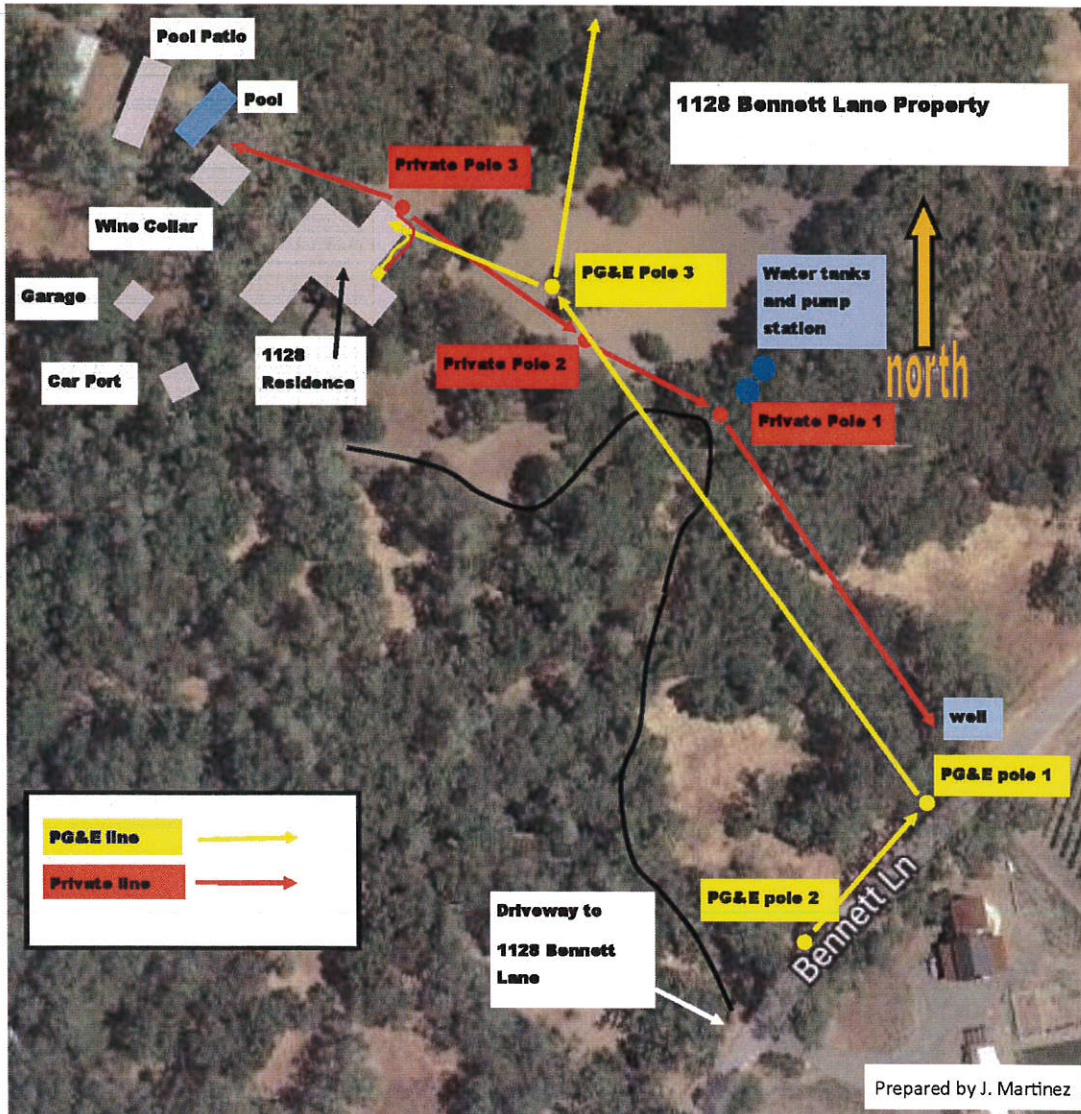
8 Mailing Address: [REDACTED]

9

10 The 1128 Bennett Lane property is an approximately 10.5-acre parcel situated in Napa  
11 County, approximately three miles north of Calistoga. Bennett Lane can be accessed  
12 from both Hwy 128 and Tubbs Lane. The entrance to the property is from a paved  
13 driveway off Bennett Lane identified by an address marker labeled "1128." The  
14 surrounding area is rural residential setting and homes on larger parcels surrounded by  
15 mixed oak and conifer woodlands and vineyards. The 1128 Bennett property is largely  
16 undeveloped except for the upper slopes where the residence and associated  
17 outbuildings were located. The driveway continues up a south facing slope through oak  
18 woodlands, until it reaches a large one-half acre clearing below and east of the primary  
19 residence. Within the clearing, there are scattered conifers and oaks and little to no  
20 ground vegetation. Also within the clearing are both PG&E and privately owned utility  
21 poles.

22 The driveway continues past the cleared area and leads to the upper elevation of the  
23 property (approximately 550-foot elevation) where the residence and associated  
24 structures sit on top of a hill. The primary residence is located at the end of the  
25 driveway. Northwest of the residence is a wine cellar with an attached bedroom.  
26 Immediately west of the wine cellar is a swimming pool with an attached open  
27 construction pool patio. West of the residence is an open carport and garage.  
28 According to accessor parcel data, the residence was built in 1946. The electrical  
29 distribution associated with the property includes PG&E service from Bennett Lane  
30 uphill to the residence, by service drop to a weather head on the roof. From there,  
31 exterior conduit connects to the meter. From the meter, conduit carries conductor to a

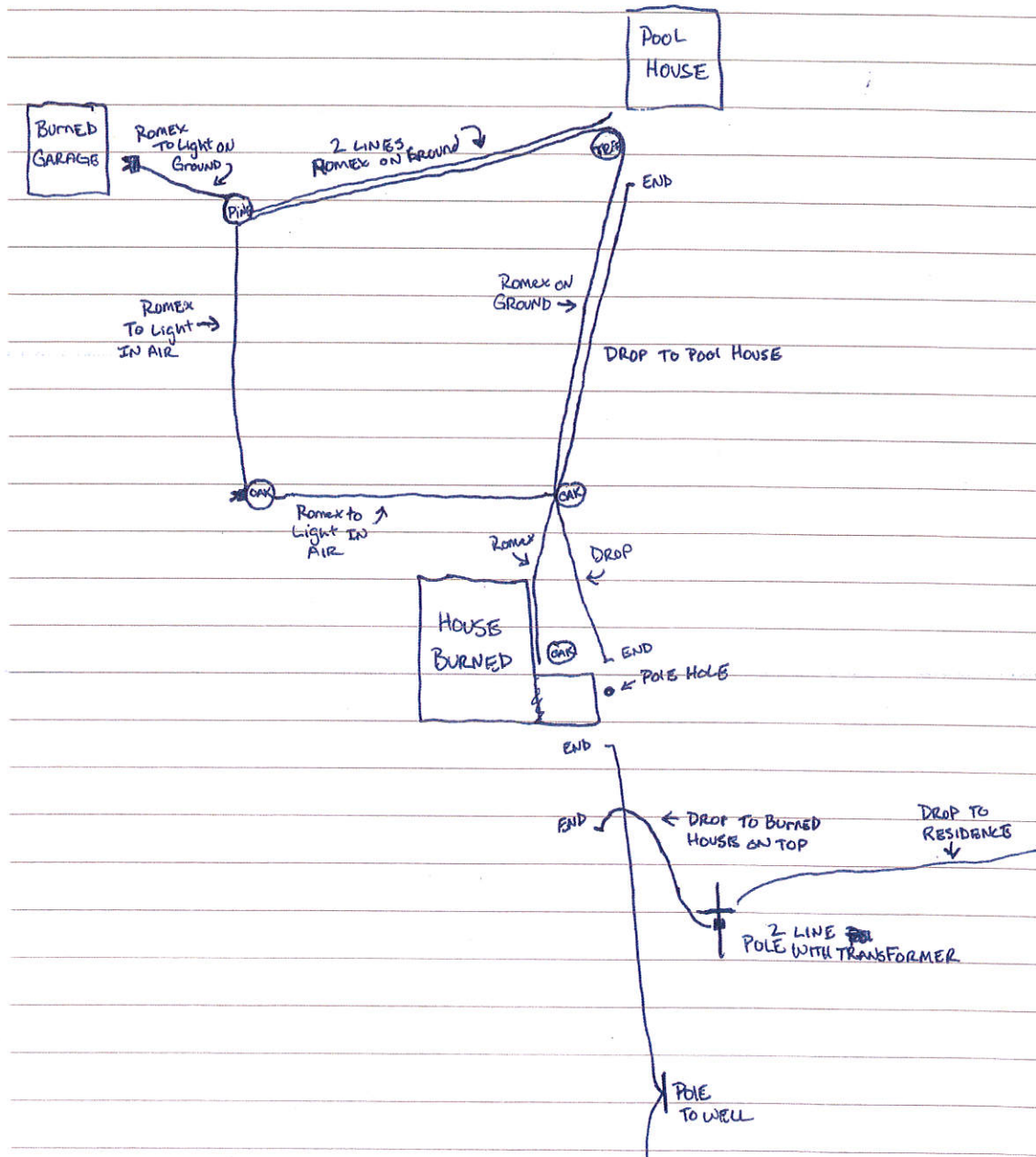
1 privately-owned power pole (private pole 3). From private pole 3, conductor extends  
2 north west towards the wine cellar and pool patio. Additionally, from private pole 3,  
3 conductor extends southeast towards private pole 2, then to private pole 1 where the  
4 water tanks and pump station are located. From private pole 1, conductor extends  
5 downhill where it ties into a well next to Bennett Lane. The graphic below includes a  
6 general representation of the developed property at 1128 Bennett Lane with a general  
7 schematic of the electrical system.



8  
9  
10  
11

1  
2  
3  
4  
5  
6  
7

The graphic below includes a general representation of the private electrical system at 1128 Bennett Lane prepared by ROATH.



**1 9 - NARRATIVE:**

2 On the evening of Sunday, October 8, 2017, a red flag warning was in effect throughout  
3 the North Bay including Napa County. Temperatures that evening were in the 60's to  
4 lower 70's, with humidity in the 10-18% range. Wind models prepared by CAL FIRE  
5 Northern Operations predictive services later estimated ridgetop winds could have  
6 reached 55 to 90 mph (see attachment A). At approximately 9:41 P.M., M. HICKMAN, a  
7 resident of Calistoga, CA reported a fire occurring in the area of Hwy 128 and Tubbs  
8 Road (see attachment B). The fire was named the Tubbs Fire and eventually burned  
9 36,807 acres in both Napa and Sonoma Counties and destroyed 5636 structures  
10 including 4651 residential structures, 94 commercial properties and 891 outbuildings.  
11 The fire damaged an additional 230 residential structures, 22 commercial structures and  
12 65 outbuildings (see attachment C). The Tubbs Fire included 22 civilian fatalities.

**13  
14 Monday October 9, 2017**

15  
16 On Monday, October 9, 2017 at approximately 1:00 A.M., CAL FIRE Battalion Chief  
17 Mark FRITS responded from Red Bluff to the Tubbs Fire to conduct an origin and cause  
18 investigation. Due to the high number of fires in Sonoma and Napa Counties, there  
19 were no local Investigators available to respond to the Tubbs Fire on the evening of  
20 October 8, 2017. FRITS arrived in the area of Bennett Lane and Hwy 128 at  
21 approximately 9:20 A.M., when he began walking and observing fire pattern indicators  
22 along Bennett Lane. Sometime after 9:20 A.M., FRITS was contacted by Ron RISI (R.  
23 RISI) who lives at [REDACTED]. The following is a summary of his conversation  
24 with R. RISI (see attachment G, FRITS):

25  
26 R. RISI was contacted by his neighbor Shawn THOMPSON (S. THOMPSON) sometime  
27 after 9:00 P.M., who told him there was a fire and to get out of the house. R. RISI  
28 exited his property and turned north on Bennett Lane. R. RISI noticed the fire was to  
29 the south of his residence on the west side of Bennett Lane. He could not confirm how  
30 far down on Bennett Lane or how close to his residence the fire was.

31

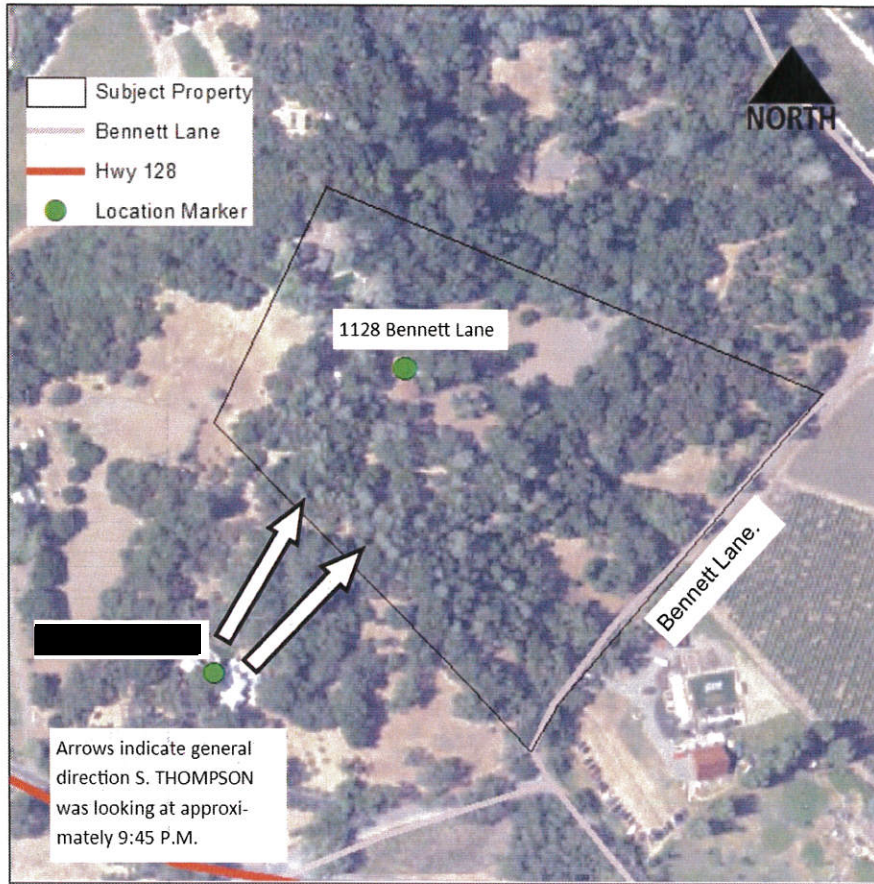
1 While on Bennett Lane north of the 1128 Bennett Lane driveway, FRITS observed what  
2 he thought to be a Pacific Gas & Electric (PG&E) pole next to a fence with PG&E  
3 conductor running uphill. He also observed an oak tree with a junction box with  
4 conductor running uphill. Not knowing an origin area yet and with limited witnesses, he  
5 chose to flag off an area approximately 15-feet by 15-feet surrounding the pole and  
6 fence line to maintain the scene integrity should it prove to be of significance  
7 (Photograph P-JM-MF-25). FRITS observed backing indicators showing the fire was  
8 spread downhill on the west side of Bennett Lane in the area of the 1128 Bennett Lane  
9 driveway. When FRITS came to the 1200 Bennett Lane, he made his way up the  
10 driveway where he observed fire pattern indicators including angle of char on stumps of  
11 trees indicating the fire was backing against the wind towards the residence. Between  
12 the 1128 and 1200 Bennett Lane driveways FRITS observed fire patterns indicating the  
13 fire backed into the wind from the southeast of the cleared area near the driveway of  
14 1128 Bennett Lane. FRITS observed advancing fire pattern indicators to the southwest  
15 of the 1128 Bennett Lane driveway. While on Bennett Lane, FRITS was contacted by  
16 S. THOMPSON who lives at [REDACTED] S. THOMPSON told FRITS the  
17 following in summary (see attachment G, FRITS):

18

19 S. THOMPSON was sleeping at his residence at approximately 9:45 P.M., when he was  
20 woken up by his smoke alarms going off. He observed the fire burning toward the back  
21 of his house from the northeast.

22

23 The 1128 Bennett Lane property is the next adjoining property to the northeast from the  
24 S. THOMPSON property. A fire spreading towards the S. THOMPSON residence from  
25 his description would likely have come from or passed through the 1128 Bennett Lane  
26 property. The graphic below, prepared by MARTINEZ, is a representation, based on  
27 the witness statement, showing where the witness was and what direction he was  
28 looking.



1  
 2 FRITS then spoke with Roger LUTZ (R. LUTZ) who works for the Deer Park Volunteer  
 3 Fire Department at Station 21. R. LUTZ told FRITS the following in summary (see  
 4 attachment G, FRITS):

5  
 6 R. LUTZ arrived on scene on Engine 221 and began cooling down power poles on the  
 7 west side of Bennett Lane working towards the north. He worked to the driveway of  
 8 1200 Bennett Lane and the fire had not yet spread north to the driveway. When he  
 9 accessed the residence at 1200 Bennett Lane, the fire was backing downhill from the  
 10 southeast toward the rear of the residence. The fire was also backing to the northeast  
 11 on the northwest side of the driveway. Once the fire became established in the draw  
 12 below the residence he left the scene. R. LUTZ was provided a LE-78 witness  
 13 statement which he completed on October 9, 2017 (see attachment H).

14  
 15 The 1128 Bennett Lane property is the first adjoining property to the south of 1200

1 Bennett Lane. A fire spreading northeast towards 1200 Bennett Lane would likely have  
2 come from or passed through the 1128 Bennett Lane property.

3  
4 While at the intersection of Bennett Lane and Hwy 128, FRITS spoke with Calistoga  
5 Fire Department Fire Captain Jason TAMAGNI, assigned to Engine 419, who told him  
6 the following (see attachment G, FRITS):

7  
8 TAMAGNI told FRITS when he arrived at scene on October 8, 2017, that the fire was  
9 spreading from the north of Bennett Lane to the south of Hwy 128 at a rapid rate of  
10 spread. TAMAGNI completed a LE-78 witness statement on October 9, 2017. Also  
11 present with TAMAGNI on the engine was Jaime OROZCO who also provided a LE-78  
12 witness statement (see attachment H).

13  
14 FRITS continued observing fire pattern indicators on the north side of 1110 Bennett  
15 Lane. There, he observed fire patterns, indicating the fire advanced toward the south  
16 and rear of the residence. FRITS continued observing advancing fire pattern indicators  
17 leading him to the partially fire damaged carport on the 1128 Bennett Lane property.

18  
19 On October 9, 2017, at approximately 11:00 A.M., I was dispatched to the Sonoma  
20 Lake Napa Unit (LNU) to assist the Unit in a manner which was not yet determined  
21 when I responded.

22  
23 On October 9, 2017 at approximately 2:30 P.M., I arrived in Napa County and  
24 responded to the Tubbs Fire where I contacted FRITS, who was continuing his  
25 investigation and had yet to determine a General Origin Area (GOA) for the fire. FRITS  
26 briefed me verbally on the witness statements provided by R. RISI, S. THOMPSON, R.  
27 LUTZ, and TAMAGNI, which placed the fire origin north of 1110 Bennett Lane and  
28 southwest of 1177 Bennett Lane. Based on the initial witness statements, FRITS  
29 hypothesized the fire may have originated from the 1128 Bennett Lane property.

30 I walked the fire edge with him and discussed the reasons for his determination. I  
31 observed fire pattern indicators such as angle of char, curling, and white ash

1 accumulation on the protected side (due to high winds), indicating the fire generally  
2 backed down slope, against the wind towards the west side of Bennett Lane, in a  
3 northeast direction. I also observed advancing fire pattern indicators south of the  
4 residence, above 1110 Bennett Lane. Angle of char and needle freeze could be  
5 observed in the canopies of pine trees and on lower ground vegetation. These  
6 observations are consistent with S. THOMPSONS statement describing the fire  
7 advancing from the 1128 Bennett Lane towards his residence at [REDACTED] Bennett Lane. It  
8 was still very early in the investigation and FRITS and I were still becoming familiar with  
9 the overall area based on limited witness statements and had not taken any  
10 photographs or placed any colored pin flags identifying fire pattern indicators observed.

11

12 After considering FRITS' initial observations, early witness statements and my own  
13 observations, I concurred the GOA was likely located on or adjacent to the property  
14 identified as 1128 Bennett Lane. FRITS flagged the entrance to the driveway of 1128  
15 Bennett Lane. FRITS included 1110 Bennett Lane because of its proximity to 1128  
16 Bennett Lane. Both driveways were secured with yellow flagging labeled "DO NOT  
17 ENTER".

18

19 FRITS and I designated an approximate one-half acre dirt field adjacent to the 1128  
20 Bennett Lane pump station, as a parking and meeting location. The field was void of  
21 ground vegetation and parking vehicles in it would not impact the investigation. There  
22 was no private security available to keep people off the property, so FRITS remained at  
23 1128 Bennett Lane overnight. Starting on October 10, 2017 and throughout the entirety  
24 of the investigation, Brothers In Arms Security maintained scene security, and were  
25 instructed to not allow anyone access, from the time the investigation team left in the  
26 evening until they returned the next morning, each day until investigators released the  
27 scene at approximately 5:00 PM on October 25, 2017. Each and every morning, it was  
28 confirmed with the security guard that no persons had entered the property between the  
29 time the investigation team left and returned.

30

31

**Tuesday October 10, 2017**



1  
2 On Tuesday, October 10, 2017, I returned to 1128 Bennett Lane, arriving at  
3 approximately 8:00 A.M. I met with FRITS and we began placing fire pattern indicator  
4 flags. Colored pin flags were placed at the observed fire pattern indicators, including  
5 red for advancing fire, blue for backing and yellow for lateral spread. Photographs  
6 referenced in this section were not taken until later, however, they have been used to  
7 reference our observations. FRITS and I entered the burned area on the hillside on the  
8 northside of Bennett Lane and walked parallel to the road. I observed fire pattern  
9 indicators showing fire backing downhill towards Bennett Lane in a northeast trending  
10 direction. This was evident from cupping (see attachment D, MARTINEZ photograph: P-  
11 JM-108), ash accumulation on leeward side (see attachment D, MARTINEZ  
12 photograph: P-JM-112), leaf curling and staining on rocks (see attachment D,  
13 MARTINEZ photograph: P-JM-107). Also observed was needle freeze angled towards  
14 the southwest indicating strong winds out of the northeast. These fire pattern indicators  
15 were consistent along the bottom of the hillside as well as continuing uphill towards the  
16 1128 Bennett Lane residence. We walked back and forth along the hillside while  
17 working uphill in a serpentine pattern, observing fire pattern indicators until we arrived at  
18 a developed area containing a water pump station, near where we had parked. The  
19 developed area was along the right side of the 1128 Bennett Lane driveway,  
20 approximately two-thirds up towards the residence. Within the developed area next to  
21 the driveway I observed (2) water tanks and water pump system (pump station). One  
22 was a newer looking water tank and pump and one was as an older looking cement  
23 tank. In addition, I observed a 4-inch by 4-inch wooden post approximately 6-feet in  
24 height with (2) grey metal electrical boxes attached to it, one approximately 6-inches by  
25 8-inches, and the other approximately 12-inches by 18-inches. Approximately 30-feet  
26 away there was a utility pole (private pole 1), which didn't appear to be a PG&E pole  
27 due to its appearance. The conductor associated with the pole did not appear  
28 professionally installed (see attachment D, MARTINEZ photograph: P-JM-35). The pole  
29 did not appear to be related to the PG&E pole 3 observed in the cleared area to the  
30 west where our vehicles were parked. The conductor from private pole 1 continued  
31 downhill towards Bennett Lane and uphill towards the 1128 Bennett Lane residence.

1 The conductor which extends downhill towards Bennett Lane connects to a switch box  
2 on an oak tree where it appeared to provide power to an old well. This area was  
3 flagged off earlier by FRITS on October 9 prior to identifying fire burn patterns in the  
4 area.

5  
6 There were various lengths of conductor and structural wiring associated with the  
7 wooden post and private pole 1, much of it under tension from a tree which had fallen in  
8 the immediate area. Fire behavior in this area appeared to be low intensity (see  
9 attachment D, MARTINEZ photograph: P-JM-42), with the exception being the wooden  
10 post and private pole 1. The lower half of the wooden post was partially burned,  
11 however the section of post near the electrical boxes was heavily charred (see  
12 attachment D, MARTINEZ photograph: P-JM-19). An oak tree had fallen on the post  
13 breaking it just below the electrical box. Closer examination of the tree indicated it had  
14 fallen after the fire, due to the absence of any fire damage to the tree, specifically  
15 undamaged foliage in contact with the ground (see attachment D, MARTINEZ  
16 photograph: P-JM-MF-64). The wooden post and electrical boxes were discussed as  
17 potential competent ignition sources, and were candidates to be reviewed by an  
18 electrical engineer. Observations by an electrical engineer will be discussed later.

19  
20 We walked south from the clearing where we parked, along the edge of the property  
21 where it broke in slope and noted advancing fire pattern indicators such as angle of char  
22 and needle freeze on pine trees, below the carport and to the area immediately to the  
23 east, indicating fire progression from the north, in line with the winds the night of the fire  
24 (see attachment D, MARTINEZ photograph: P-JM-127). This is consistent with S.  
25 THOMPSONS witness statement. We then walked the area north of the 1128 Bennett  
26 Lane residence, in a serpentine pattern towards the 1200 Bennett Lane property and  
27 observed fire pattern indicators on vegetation and rocks including angle of char, white  
28 ash, and staining. These indicators showed the fire both backed and laterally moved  
29 northwest behind the residence towards the wine cellar and pool area before backing  
30 towards 1200 Bennett Lane.

31

1 FRITS and I considered the general fire pattern indicators in the area, and requested an  
2 electrical engineer to review the electrical system at the water tanks and pump station.

3  
4 FRITS and I considered this area as a possible GOA, however the surrounding property  
5 had not yet been reviewed in detail. In order to maintain the integrity of the scene we  
6 flagged off an area with yellow "do not enter" flagging approximately 50-feet by 50-feet  
7 to include the pump station and private pole 1. At approximately 2:20 P.M., I  
8 photographed both the perimeter and interior of the flagged area (see attachment D,  
9 MARTINEZ photographs: P-JM-1 thru P- JM-25).

10  
11 I began photographing the surrounding area, including Bennett Lane between Hwy 128  
12 and the 1128 Bennett Lane property. (see attachment D, MARTINEZ photographs: P-  
13 JM-MF-01 thru P-JM-MF-79).

14  
15 At approximately 3:30 P.M. electrical engineer Marc RHODES arrived at 1128 Bennett  
16 Lane. We were interested in having him do an initial examination of the area associated  
17 with the pump station. RHODES said he didn't see anything that stood out to him, and  
18 thought the electrical boxes were closed tight enough where, even if there was a  
19 problem inside, it wouldn't have been hot enough to ignite the wooden post. RHODES  
20 also inspected private pole 1 and the associated electrical conductor. RHODES  
21 observed what he thought was evidence of arcing on a conductor near the top of the  
22 pole on a section of conductor continuing downhill to Bennett Lane. Utilizing both  
23 binoculars and a camera, we agreed there appeared to be a small piece of shiny  
24 material on a section of conductor from the pole that continued downhill towards  
25 Bennett Lane. I took photographs in an attempt to observe the material from the ground  
26 (see attachment D, MARTINEZ photographs: P-JM-26 thru P-JM-35).

27  
28 After inspecting private pole 1, we followed the conductor extending downhill to a  
29 switchbox on a large oak tree next to Bennett Lane and near a roadside PG&E pole  
30 (PG&E pole 1). I observed the switchbox on the oak tree to be in the "off" position.

31 RHODES inspected the box and confirmed it was in the off position (see attachment D,  
LE80 (Rev. 7/2011)

1 MARTINEZ photograph: P-JM-cellular-05). The inside of the box was severely  
2 damaged from fire. RHODES left the scene at approximately 6:15 P.M. RHODES  
3 became unavailable and did not return to the scene or prepare a report.

4  
5 **Wednesday, October 11, 2017**  
6

7 On Wednesday, October 11, 2017, I returned to the 1128 Bennett Lane at  
8 approximately 8:00 A.M. Prior to my arriving at scene, FRITS drove to Wheeler Farms  
9 at 1240 Bennett Lane and spoke with Luis VARGAS. The following is a summary of the  
10 conversation:

11  
12 VARGAS lives on the Wheeler Farms property at [REDACTED] Bennett Lane. On the evening  
13 of October 8, 2017 at an unknown time, VARGAS went outside his house and noticed  
14 fire to the south of Bennett Lane. The fire had not yet burned onto the Wheeler Farm.  
15 The wind was erratic and very gusty. VARGAS said the fire burned to the north on the  
16 east side of the property and then wrapped around the property to the west.

17  
18 After meeting with VARGAS, FRITS returned to 1128 Bennett Lane and telephoned M.  
19 HICKMAN who told FRITS the following in summary (see attachment G, FRITS):

20  
21 On the evening of October 8, 2017, M. HICKMAN was at her residence at [REDACTED]  
22 [REDACTED] when her daughter told her she saw a bright light and then an orange glow through  
23 the window. M. HICKMAN looked out her bathroom window and she could see the fire  
24 through the trees to the north of her residence.

25  
26 At approximately 1:30 P.M., FRITS was released from the Tubbs Fire due to a  
27 previously planned commitment. I was assigned the role of lead investigator for the  
28 Tubbs Fire.

29  
30 CAL FIRE Battalion Chief Mike THOMPSON (M. THOMPSON) arrived at scene and  
31 assisted me with continuing the origin and cause investigation. I briefed M.

1 THOMPSON on the progress to date. We walked downhill in a serpentine pattern  
2 between the pump station and Bennett Lane, observing fire pattern indicators. M.  
3 THOMPSON inspected the switchbox on the oak tree and determined it was no longer  
4 in service, and may have been related to an older system. After walking the powerlines  
5 on the property, we determined the power supply for the newer pump station came  
6 directly from the residence. The pump switch adjacent to the water tanks was in the  
7 "on" position. Mike ANDREWS, the maintenance person for the property, later  
8 confirmed the pump was always turned "on" and was operational.

9  
10 At approximately 2:40 P.M. I took photographs of private pole 1 and the surrounding  
11 area (see attachment D, MARTINEZ photographs: P-JM-36 thru P-JM-46).

12  
13 We then continued identifying fire pattern indicators such as staining (see attachment D,  
14 MARTINEZ photographs: P-JM-68 and P-JM-69) and protection (see attachment D,  
15 MARTINEZ photographs: P-JM-70) within the flagged water tank/pump station area,  
16 immediately north of the electrical boxes. We continued identifying fire pattern  
17 indicators working our way from the edge of the flagged area in towards private pole 1  
18 and the electrical boxes. Backing indicators such as cupping were observed adjacent to  
19 the cement water tank (see attachment D, MARTINEZ photograph: P-JM-73).

20 Advancing indicators such as staining was observed south of the electrical boxes (see  
21 attachment D, MARTINEZ photographs: P-JM-74 and P-JM-75). We noted the top of  
22 private pole 1 had more fire damage than the lower portion (see attachment D,  
23 MARTINEZ photographs: P-JM-35 thru P-JM-40). The high level of damage to private  
24 pole 1 appeared out of place considering the low intensity burn to ground fuels in the  
25 immediate area.

26  
27 Fire pattern indicators were limited in the area, due to the approximate one-half acre  
28 cleared area northwest of the pump station (see attachment D, MARTINEZ  
29 photographs: P-JM-MF-43 thru P-JM-MF 44). Lack of fire pattern indicators in the  
30 immediate area made it difficult to determine with complete certainty whether this was  
31 the GOA. However, considering RHODES opinion of having observed possible arcing

1 on conductor associated with private pole 1, I had to include this area as a potential  
2 GOA. Based on this, we discussed the need to have a second electrical engineer re-  
3 examine both the electrical boxes and the conductor associated with private pole 1. I  
4 requested through CAL FIRE Assistant Chief Shawn ZIMMERMAKER, a truck with a  
5 boom so I could closely observe the conductor on private pole 1. I was advised a boom  
6 truck would be available the next day.

7  
8 **Thursday, October 12, 2017**

9  
10 On Thursday, October 12, 2017, I returned to 1128 Bennett Lane at approximately 8:00  
11 A.M. and continued working in the flagged area at the pump station. I photographed the  
12 areas immediately surrounding the electrical boxes and private pole 1 (see attachment  
13 D, MARTINEZ photographs P- JM-47 thru P-JM-79). CAL FIRE Fire Captain Scott  
14 LOHSE arrived at the incident at 9:15 A.M. to assist with the investigation. He was  
15 briefed on the investigation and then walked the property to become familiar with it and  
16 to make independent observations.

17  
18 At approximately 10:30 A.M. a Britton Tree Services, Inc truck with boom and crew  
19 arrived on scene. Their truck was equipped with a bucket extension allowing me to  
20 observe private pole 1. When they arrived on scene I briefed them on their assignment.  
21 I assigned them to assist in the removal of the tree which had fallen on the electrical  
22 boxes in the pump station area.

23  
24 Using the tree service boom and bucket, I was lifted to private pole 1 and was able to  
25 examine and photograph from a closer vantage point, (see attachment D, MARTINEZ  
26 photographs P-JM-80 thru P-JM-88). I did not observe any obvious evidence of arcing  
27 on any of the wiring associated with the pole. The "shiny" material identified earlier by  
28 RHODES as possible evidence of arcing, appeared to be melted and discolored yellow  
29 jacketed conductor, having the appearance of being shiny. It would later be collected  
30 as evidence (evidence items E-35, E-36, and E-37).

1 At approximately 1:00 P.M. I photographed and took waypoints of colored fire pattern  
2 indicator pin flags placed by myself and FRITS (see attachment D, MARTINEZ  
3 photographs P-JM-91 thru P-JM-114, referenced earlier in report).

4  
5 At approximately 5:00 P.M., I carefully searched the area immediately below the  
6 electrical box and post. As I searched the approximate 2-foot area surrounding the 4-  
7 inch by 4-inch post using a magnet, I located a small piece of golden colored metal. It  
8 did not appear to be melted. The metal piece, or wire fragment was found  
9 approximately 8 inches from the post, to the north. I photographed and collected the  
10 item as evidence (Evidence item "A"). Later, to be consistent with our overall evidence  
11 collection standards, it was renamed Evidence Item 38 (see attachment D, MARTINEZ  
12 photographs P-JM-116 and P-JM-117).

13  
14 **Friday, October 13, 2017**

15  
16 On Friday October 13, 2017, I returned to 1128 Bennett Lane at approximately 7:45  
17 A.M. and met with LOHSE. I tasked LOHSE with contacting and interviewing potential  
18 witnesses to the incident. At approximately 9:15 A.M. I met with the CAL FIRE Light  
19 Detection and Ranging (LIDAR) team Survey Party Chief David KAROLY. I briefed  
20 KAROLY and his team on their assignment. I asked them to document our current  
21 scene, to include the flagged area, the associated PG&E and private utility poles and  
22 the southern aspect of the residence on the property. I asked them to capture as much  
23 of the north facing hill-side between the pump station and Bennett Lane, which would  
24 include the electrical system from the residence to Bennett Lane.

25  
26 At 10:06 A.M., LOHSE contacted YANT by phone. YANT provided photographs via text  
27 message of when she received a report of the fire (see attachment D, LOHSE  
28 Photographs P-SL-332 thru P-SL-334).

29  
30 At 10:23 A.M., LOHSE interviewed Susan SWENSON (S. SWENSON) via cellular  
31 phone. S. SWENSON is the daughter of Anne ZINK, the owner of the 1128 Bennett  
LE80 (Rev. 7/2011)

1 Lane property. ZINK lives in Palm Springs and [REDACTED] S  
2 SWENSON told LOHSE the following in summary (see attachment G, LOHSE):

3  
4 S. SWENSON had not been on the property since September 3, 2017 and is unaware  
5 of any problems associated with the property. ANDREWS is on the property at least  
6 once per week to make sure everything is working properly and maintained. Duke  
7 SWENSON (D. SWENSON) is the son of ZINK and also has access to the property. D.  
8 SWENSON lives in Cupertino, CA and hasn't been to the property in one year.

9  
10 At 12:49 P.M., LOHSE spoke with ANDREWS, who is the primary care taker for the  
11 1128 Bennett Lane property and has been for 27 years. Some of his duties include  
12 maintaining defensible space and the buildings on the property. He usually checks the  
13 property once per week. ANDREWS entered the property the day after the fire, on  
14 October 9, 2017 and took photographs using his cellular phone which he later provided  
15 to LOHSE (see attachment D, LOHSE photographs: P-SL-319 thru P-SL-331).  
16 ANDREWS noticed the 4-inch x 4-inch post associated with the pump electrical box, still  
17 in a standing position when he was there on October 9. ANDREWS noted there were a  
18 number of trees which had fallen after the fire had passed (see attachment G, LOHSE).  
19 This was consistent with observations made at scene by investigators noting numerous  
20 fallen trees with no burn damage to the tree surface in contact with the ground

21  
22 While the LIDAR team did their work, LOHSE and I drove to the Lucinda YANT  
23 residence at [REDACTED]. LOHSE had received digital photograph's taken by YANT  
24 on October 8, 2017, taken at 9:51 P.M. (see attachment D, LOHSE photographs: P-SL-  
25 332 through 334), showing the fire advancing from the northeast towards her residence.  
26 LOHSE and I compared the photograph's taken at night with daytime conditions and  
27 confirmed the photograph was taken from her porch and fire appeared to be advancing  
28 from the northeast towards her residence (see attachment D, Witness photographs:  
29 Photo Comparison 2 and 3). We observed fire pattern indicators such as needle freeze  
30 and angle of char showing fire advancing from the slope below the 1128 Bennett Lane  
31 property towards the YANT residence (see attachment D, MARTINEZ photographs: P-



1 JM-122 JM thru P-JM-127).

2

3 ZIMMERMAKER arrived at scene at approximately 1:00 P.M. to check on our needs  
4 and the progress of the investigation. I requested an electrical engineer to re-examine  
5 the pump station and private pole 1 as a potential ignition source.

6

7 ZIMMERMAKER advised me about Napa Police Department Officer Amy HUNTER,  
8 who may have had information on a suspicious person reported to be in the area the  
9 day of the fire. I would contact her the following day. LIDAR completed their scanning  
10 at approximately 6:00 P.M. and we all left the scene.

11

12 At 10:30 P.M. LOHSE interviewed CAL FIRE Battalion Chief Gino DEGRAFFERIED via  
13 cellular phone. DEGRAFFERIED was the CAL FIRE Battalion Chief on scene of the  
14 Tubbs Fire. He estimated he arrived at Bennett Lane and Hwy 128 approximately 20  
15 minutes after the initial dispatch (approximately 10:00 P.M.). DEGRAFFERIED  
16 estimated the winds to be approximately 40 miles per hour with gusts at approximately  
17 50 miles per hour. He estimated the fire was approximately 100-foot wide upon his  
18 arrival and was backing to the north. He was positive it started east of Hwy 128  
19 because it could not have backed against the wind to the west and across Hwy 128. He  
20 provided a google image with a drawing showing his estimation of the fire size when he  
21 arrived (see attachment D, LOHSE photographs: P-SL-343).

22

23

**Saturday, October 14, 2017**

24

25 On Saturday, October 14, 2017, I returned to 1128 Bennett Lane at approximately 7:45  
26 A.M. I was advised by ZIMMERMAKER that electrical engineer Jim NOLT and a truck  
27 with a boom would be arriving at 1128 Bennett Lane later in the morning to re-examine  
28 the electrical boxes near the pump station and the conductor associated with private  
29 pole 1.

30

31 LOHSE met with Calistoga Fire Department Fire Captain Jason TAMAGNI at 10:00

1 A.M. TAMAGNI told LOHSE the following in summary (see attachment G, LOHSE):

2

3 TAMAGNI and Engineer Jaime OROZCO were the first fire agency personnel to arrive  
4 on scene on Engine 419, after the arrival of Calistoga Police Department Officer  
5 HOSKINS. HOSKINS arrived at approximately 9:48 P.M. HOSKINS told TAMAGNI the  
6 fire was approximately 3 acres in size with a rapid rate of spread. From Hwy 128 and  
7 Bennett Lane, the fire did not appear to be on the east side of Bennett Lane. The fire  
8 was moving rapidly to the southwest. LOHSE explained to TAMAGNI what  
9 DEGRAFFERIED had told him about the fire being 100-feet wide. TAMAGNI  
10 commented on DEGRAFFERIED's statement, stating the fire was further up the hill at  
11 Hwy 128 and Bennett Lane and appeared to be coming down and sideways along the  
12 hill from the northeast to the southwest. The structure at 1110 Bennett was surrounded  
13 by fire when he arrived. The northeast side of the fire had not yet reached the driveway  
14 to 1128 Bennett Lane. The northeast side of the fire was burning slowly against the  
15 wind, perpendicular to Bennett Lane.

16

17 A boom truck arrived at approximately 10:30 A.M. and was put on standby. NOLT  
18 arrived at approximately 11:30 A.M. I briefed NOLT on the investigation and  
19 accompanied him while he inspected the site. NOLT conducted an assessment of the  
20 electrical system on the property, including the residence and all utility poles on the  
21 property. NOLT's initial impression of the residential structure and associated electrical  
22 components was there was little he could comment on due to the high degree of  
23 damage from the fire. NOLT noted the presence of melted aluminum and copper  
24 suggesting temperatures in excess of 1900 degrees Fahrenheit. NOLT did not observe  
25 any obvious problems with any of the public utility lines which were not consumed by  
26 the fire. There were signs of melted conductor observed near the backside of the  
27 primary residence, however, there was no evidence of arcing observed.

28

29 NOLT inspected the electrical boxes at pump station and private pole 1. NOLT  
30 inspected both the interior and exterior of the electrical box and did not observe any  
31 evidence of electrical failure. Upon seeing the interior of the electrical box, he stated it

1 was "baked", explaining the interior damage to the box appeared to be the result of  
2 external heat from the vegetation fire. Additionally, he did not observe signs of arcing  
3 on the conductors associated with private pole 1. NOLT left the scene at approximately  
4 1:00 P.M. In a report provided by NOLT, he describes the electrical hardware in this  
5 area, including the electrical boxes and associated conductor, as showing secondary  
6 damage from fire and/or heat, but not from electrical activity such as arcing (see  
7 attachment Q).

8  
9 After speaking with NOLT, and determining there was no evidence supporting an  
10 electrical ignition source at the pump station or private pole 1, I continued with  
11 expanding the scope of the investigation to include the entire property. Additional  
12 investigators were requested to assist with the origin and cause investigation.  
13 ZIMMERMAKER advised additional investigators would respond to assist as they  
14 became available.

15  
16 At 2:10 P.M., I spoke with HUNTER with the Napa Police Department. She had  
17 information about an individual named Tyler FUNES, who was picked up hitchhiking the  
18 day of the fire. He was picked up near Silverado Trail and Middletown Road around  
19 7:00 P.M. According to HUNTER, he is known to start campfires. He told the persons  
20 who picked him up he had been hiking at Mt. Saint Helena State Park during the day.  
21 The location and time FUNES was picked up is inconsistent with the start time of the  
22 fire. There were no indicators of a camp fire in the GOA, therefore FUNES was  
23 eliminated as a person of interest in the TUBBS Fire.

24  
25 At 5:45 P.M., I contacted Dale HOSKINS with the Calistoga Police Department, who  
26 was the initial first responder to arrive at the scene of the fire. HOSKINS told me the  
27 following in summary:

28  
29 HOSKINS was dispatched to a report of a fire on Lerner Drive in Calistoga, and arrived  
30 at Lerner Drive to find the fire extinguished. Already in the area, he heard the dispatch  
31 for a report of a fire on Hwy 128 cross of Tubbs Lane. Lerner Drive is approximately 2.5  
LE80 (Rev. 7/2011) 45 Officer Initials JH

1 miles from 1128 Bennett Lane. HOSKINS responded to the area and could see a large  
2 glow. He updated the location of the fire to Hwy 128 and Bennett Lane, arriving there at  
3 9:48 P.M. Upon arrival, HOSKINS immediately took a photograph using his cellular  
4 phone from Hwy 128 and Bennett Lane looking towards the hillside below the 1110  
5 Bennett Lane residence (see attachment D, HOSKINS photograph, and photograph: P-  
6 JM-cellular-04 and, Comparison Photo 1). The image shows fire on both sides of Hwy  
7 128 as well as fire appearing to be backing in a line towards the northeast below the  
8 1110 Bennett Lane residence. The fire had not crossed to the south side of Bennett  
9 Lane, nor had it backed to the driveway to 1128 Bennett Lane. HOSKINS stated he  
10 would provide a Calistoga Police Department report of his actions the night of October  
11 8, 2017 (see attachment I).

12

13

**Sunday, October 15, 2017**

14

15 On Sunday, October 15, 2017, I returned to 1128 Bennett Lane at 7:30 A.M. CAL FIRE  
16 Battalion Chief Vince BERGLAND, CAL FIRE Fire Captain Matt FRANKLIN and M.  
17 THOMPSON arrived at 1128 Bennett Lane at approximately 8:00 A.M. to assist with the  
18 investigation. BERGLAND and FRANKLIN were briefed on the investigation and then  
19 together we walked the property to familiarize them with area.

20

21 At approximately 9:00 A.M., I spoke with Roger LUTZ (R. LUTZ) who works for Deer  
22 Park Volunteer Fire Department via cellular phone. On October 18, 2017, I met with R.  
23 LUTZ at Bennett Lane and Hwy 128. R. LUTZ told me the following in summary (see  
24 attachment G, MARTINEZ):

25

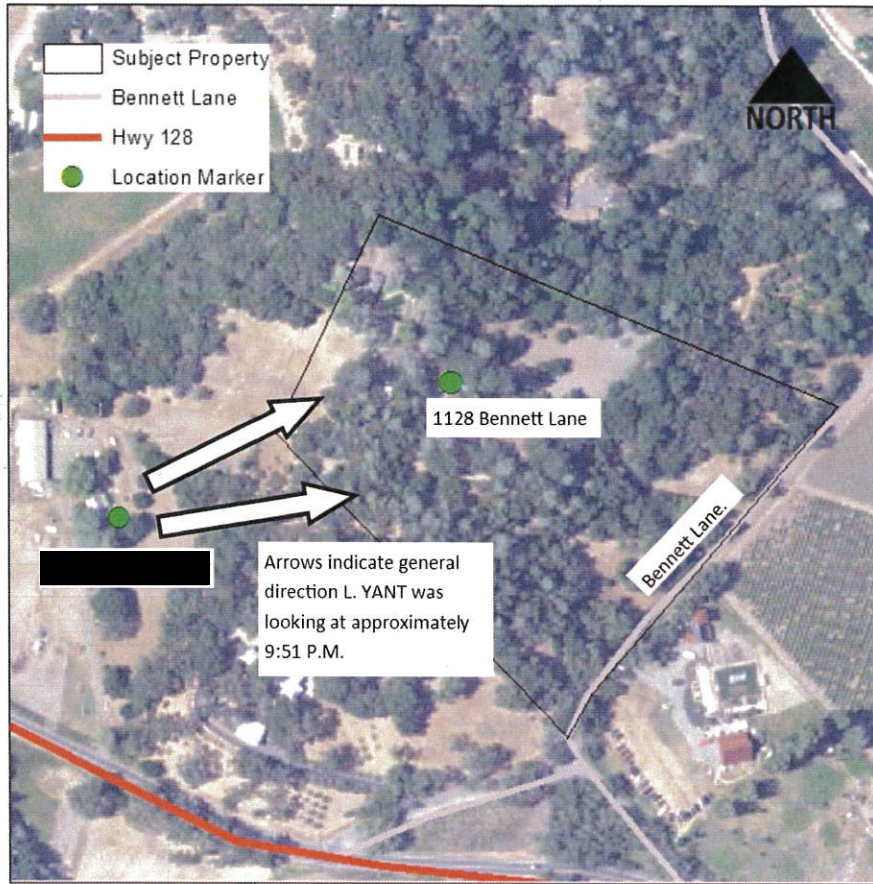
26 R. LUTZ was assigned to E221 on the night of October 8, 2017. R. LUTZ estimated he  
27 arrived at scene of the Tubbs Fire on October 8, 2017 between 10:00 and 10:05 P.M.  
28 He was advised by the Incident Commander (IC), Greg BERTELLI, to perform structure  
29 protection at Bennett Lane. R. LUTZ drove from Hwy 128 northeast on Bennett Lane  
30 towards 1200 Bennett Lane. The fire was backing south above Bennett Lane towards  
31 1200 Bennett Lane, and was approximately halfway between 1128 and 1200 Bennett

1 Lane properties. R. LUTZ walked up the driveway of 1200 Bennett Lane and observed  
2 a "straight line" of fire above and around the geographic "bowl" surrounding the  
3 residence, which was unburned. R. LUTZ described the fire as being above (south) the  
4 structure and slowly backing towards it.

5  
6 At 10:40 A.M., LOHSE and I drove to Healdsburg, CA to take a helicopter flight to  
7 observe the scene from above. We arrived at Healdsburg Municipal Airport and met  
8 with pilot Ryan COREY, who flew us through the Tubbs Fire to the vicinity of Hwy 128  
9 and Bennett Lane. From the air, I observed what appeared to be a large "V" pattern  
10 indicator in the vegetation downhill and south of the 1128 residence (see photographs  
11 P-JM-cellular-13 thru 16). LOHSE took photographs during the flight (see attachment  
12 D, LOHSE photographs P-SL-051 thru P-SL-294). We completed the flight at  
13 approximately 1:00 P.M.

14  
15 At approximately 12:00 P.M., while on Bennett Lane, BERGLAND contacted James  
16 Harrison YANT (J. YANT) who lives at [REDACTED] BERGLAND followed J. YANT to  
17 his residence and spoke with him about the night of the fire. The following is a  
18 summary of the conversation (See attachment G, BERGLAND):

19  
20 J. YANT was in Sacramento when the fire started. His wife, Lucinda YANT (L. YANT),  
21 was home alone on October 8, 2017. Their son, James Carson YANT (JC. YANT) who  
22 lives on Mt. St. Helena, heard on a scanner of a fire located at Tubbs Rd and Hwy 128.  
23 JC. YANT sent a text to L. YANT, notifying her of the fire. L. YANT got out of bed and  
24 walked out the back porch, facing northeast, and noticed fire burning in a south  
25 direction. She took three photographs with her cellular phone at approximately 9:51  
26 P.M. (see photographs P-JM-cellular-01 thru P-JM-cellular-03), which she provided to  
27 investigators. When she returned into the house she saw through a large window, fire  
28 on the other side of the gravel road to the southwest also burning in a south direction.



1  
 2 North of the YANT residence, BERGLAND observed a power pole and transformer with  
 3 damage. He secured the area with barrier tape and stood by. The pole was  
 4 immediately behind the residence of [REDACTED]. BERGLAND then accompanied M.  
 5 THOMPSON to meet with witness Cigi RICH who lives [REDACTED], who had  
 6 taken photographs of the Tubbs Fire at approximately 9:46 P.M. from her deck (see  
 7 attachment D, RICH photographs P-CG-001 & 002). The photographs ruled out the  
 8 power pole BERGLAND had observed at [REDACTED] Hwy 128, as an ignition source due to no  
 9 fire observed near the area of the power pole.

10  
 11 **Monday, October 16, 2017**

12  
 13 On Monday, October 16, 2017, I returned to 1128 Bennett Lane at 8:00 A.M. LOHSE,  
 14 FRANKLIN, and BERGLAND began observing and placing fire pattern indicator colored  
 15 pin flags on the slopes below the 1128 residence and facilities. I walked between the

1 Investigators and assisted. M. THOMPSON arrived a short time later and assisted the  
2 investigation team. Colored pin flags were placed at the observed fire pattern  
3 indicators, including red for advancing fire, blue for backing and yellow for lateral  
4 spread.

5  
6 I walked between the 1128 Bennett Lane driveway and the hillside, in a serpentine  
7 pattern above the 1110 Bennett Lane residence between LOHSE and BERGLAND.  
8 While walking the area I observed fire pattern indicators such as angle of char, wind  
9 driven foliage freeze (see attachment D, ROATH, photographs: IMG-0099 thru IMG-  
10 0101), staining (see attachment D, ROATH, photographs: IMG-0053 thru IMG-0060)  
11 and white ash deposits. These macro scale indicators showed fire progressing  
12 southwest and downhill towards YANT and THOMPSON properties. Observations  
13 made on October 13, 2017 showed an advancing fire vector progressing southwest  
14 from the developed area of 1128 Bennett Lane. Fire pattern indicators including needle  
15 freeze and angle of char were observed (see attachment D, MARTINEZ photographs:  
16 P-JM-122 JM thru P-JM-127). Based on fire pattern indicators, it shows the that once  
17 the fire advanced to the top of the bowl above the YANT residence, it backed northerly  
18 towards the PERLISS and OKELLY residence, and spread laterally northwesterly  
19 towards the JACKSON property and Hwy 128.

20  
21 I walked in a serpentine pattern between the THOMPSON property east to the 1128  
22 Bennett Lane property on the lower slopes above Bennett Lane. I observed fire  
23 patterns indicators such as cupping (see attachment D, ROATH, photograph: IMG-0061  
24 thru IMG-0063) and staining on rocks (see attachment D, ROATH, photographs: IMG-  
25 0064 thru IMG-0069), curling and angle of char (see attachment D, ROATH,  
26 photographs: IMG-0046 thru IMG-0048), indicating the fire progressed laterally to the  
27 southeast until it came into alignment with the wind where the fire began backing  
28 towards the northeast into the wind. A photograph taken by HOSKINS at Hwy 128 and  
29 Bennett Lane, illustrates this fire progression, showing the fire transition from a lateral  
30 vector to a backing (see attachment D, LOHSE, photograph: P-SL-295) Backing  
31 indicators continue to be observed on the west slopes above Bennett Lane, consistent

1 with observations made by myself and FRITS on October 9 and 10, 2017.  
2  
3 I returned to the top of the hill at 1128 Bennett Lane, then walked in a serpentine  
4 pattern, the area between the developed structures at 1128 Bennett Lane, and the  
5 PERLISS and OKELLY properties. As noted earlier, when the fire reached the top of  
6 the bowl above the YANT residence, it backed northerly towards the PERLISS and  
7 OKELLY residence at [REDACTED]. Fire pattern indicators such as staining,  
8 cupping and ash deposits on the leeward side were observed on the hillside leading  
9 towards the PERLISS and OKELLY residences (see attachment D, MARTINEZ  
10 photographs: P-JM-MF-55 and JM-MF-56 and ROATH photographs: IMG-0082 thru  
11 IMG-0084). I believe once the fire reached the northeast side of [REDACTED] Bennett Lane, it  
12 came into alignment with the wind, and spread to the southwest, making some  
13 advancing runs on the hillside southwest of 1177 Bennett Lane (see attachment D,  
14 LOHSE photograph: P-SL-21 thru P-SL-24). Fire pattern indicators such as staining  
15 (see attachment D, ROATH, photographs: IMG-0091 and IMG-0092) and cupping were  
16 observed immediately to the north of the residence. There were both lateral and  
17 backing fire vectors in alignment with the residence. I believe this indicates the fire  
18 backed behind (north) the 1128 Bennett Lane residence and towards the pool house  
19 structure, where a backing vector continued downhill towards the 1200 Bennett Lane  
20 residence as described above. I walked counter clockwise, from the slopes below the  
21 pool house area on the developed area until I came back to the northside of the  
22 residence. As I walked I examined the investigation team findings, and determined the  
23 GOA was likely to include the primary residence at 1128 Bennett Lane and the area  
24 adjacent to it.

25

26 At approximately 2:00 P.M., ANDREWS was asked to come to the 1128 Bennett Lane  
27 property and was interviewed again by LOHSE. ANDREWS walked with myself and  
28 LOHSE through the property and based on his descriptions, LOHSE prepared sketches  
29 of the structures on the property (see attachment E). The following is a summary of the  
30 interview (see attachment G, LOHSE):

31



1 During the interview, ANDREWS was asked about a large hole near the northeast  
2 corner of the primary residence. ANDREWS stated it was the location of a telephone  
3 pole, present before the fire (referred to as private pole 3 in this report). When asked  
4 about its condition, ANDREWS stated it was "just about to be replaced because it had  
5 been wood-peckered so damn bad, but it was here and it was holding". The pole was  
6 supposed to be replaced in the spring. ANDREWS did not know when the pole was  
7 installed, and said it was there when the property was purchased in 1973. When asked  
8 why it was being replaced he said, "well, because we were afraid of it falling over".  
9 ANDREWS stated everything on the property was electrically powered, and there was  
10 no gas on the property. Every electrical box on the house was in use and the power  
11 was always on. Trees on the property were pruned approximately two and a half year  
12 ago. When asked if there were any problems with trees knocking down electrical lines,  
13 ANDREWS said they've never taken out lines but did make them sag.

14

15 I obtained a digital record showing CAL FIRE performed a defensible space inspection  
16 approximately on July 25, 2015, which identified (2) violations including; A. Remove all  
17 branches within 10 feet of any stovepipe or chimney outlet, and H., Live flammable  
18 ground cover less than 18 inches in height may remain, but overhanging and adjacent  
19 trees must be pruned to a height of 6 to 15 feet. A planned re-inspection date of  
20 September 10, 2015 was identified in the digital record, however it is unclear if it  
21 occurred and if so, the results were not included (see attachment K). I requested  
22 additional defensible space inspection records from LNU CAL FIRE Battalion Chief Joe  
23 BALDWIN and CAL FIRE Deputy Chief Steven HAWKS. No additional records were  
24 found.

25

26 ANDREWS provided a series of photographs of the property from 2013, 2016 and the  
27 morning of October 9, 2017 prior to arrival of FRITS (see attachment D, LOHSE  
28 photographs P-SL-307 thru P-SL-331).

29

30 FRANKLIN interviewed Nicholaus LUTZ (N. LUTZ), with Deer Park Volunteer Fire

31 Department. The following is a summary of the interview (see attachment G,

1 FRANKLIN):

2

3 N. LUTZ responded to the Tubbs Fire on Engine 21 at approximately 11:15 P.M.,  
4 arriving at Bennett Lane and Hwy 128 at approximately 11:30 P.M. The fire was  
5 backing to the north along Bennett Lane. The fire had not yet reached 1200 Bennett  
6 Lane. At 12:00 A.M. fire was surrounding the house at 1200 Bennett Lane and began  
7 "sweeping" to the north toward the driveway.

8

9

**Tuesday, October 17, 2017**

10

11 On Tuesday October 17, 2017 at approximately 8:00 A.M. I arrived 1128 Bennett Lane  
12 with LOHSE, FRANKLIN, ROATH and BERGLAND. Investigators continued making  
13 burn pattern indicator observations and placing colored pin flags. I walked clockwise  
14 and counter clockwise around the residence to confirm fire pattern indicators. I  
15 examined the advancing fire vector southeast of the residence and observed fire pattern  
16 indicators including angle of char and staining. These observations indicated an initial  
17 advancing run in line with the primary residence at 1128 Bennett Lane (see attachment  
18 D, ROATH, photographs: IMG\_0070 thru IMG\_0081). I continued walking clockwise  
19 around the residence. I confirmed the advancing vector transition to a lateral vector on  
20 the west side of the residence. As I continued towards the north and east side of the  
21 residence, I observed fire pattern indicators such as cupping, staining and angle of char  
22 (see attachment D, ROATH, photographs: IMG-0105 thru IMG-0107). These fire  
23 patterns indicate fire backing to the northwest, towards 1200 Bennett Lane. In the  
24 context of fire behavior, transitions lines, and witness statements, I determined the GOA  
25 to include the general area of the primary structure at 1128 Bennett Lane and the  
26 immediate area surrounding it, including the area to the northeast, between PG&E pole  
27 3 and the residence (see attachment E, Fire Vector Map). The GOA was approximately  
28 200-feet east to west by 100-feet north to south (see attachment E, General Origin Area  
29 & Specific Origin Area Map).

30

31 The GOA is described as a mostly grassy, with some associated brush, sloping slightly

1 uphill as it approaches the southern corner of the residence. Within the GOA, I  
2 observed the remains of what appeared to be a PG&E service drop for the residence  
3 coming from PG&E pole 3, and a section of what appeared to be privately owned  
4 conductor also associated with the residence. The privately-owned conductor extended  
5 downhill to private pole 1 and westerly towards the pool area. The severed ends of  
6 conductor were found on opposing sides of where private pole 3 was before consumed  
7 by fire, as described by ANDREWS. Also observed were numerous puddles of melted  
8 metal, including what appeared to include both aluminum and copper. This was later  
9 confirmed by NOLT who commented the temperatures from the fire were high enough  
10 to melt both aluminum and copper (see attachment Q, photograph: 14).

11  
12 Working inward from the GOA, BERGLAND placed fire pattern indicator flags on the  
13 north and east sides of the 1128 Bennett Lane residence (see attachment D,  
14 MARTINEZ photographs: P-JM-149 thru P-JM-152). BERGLAND observed both micro  
15 and macro fire pattern indicators including, but not limited to charring on small woody  
16 materials, rock sooting and staining, and protection (see attachment D, MARTINEZ  
17 photograph: P-JM-229). BERGLAND observed advancing fire southwest toward the  
18 structure, lateral spread to the east and southeast as well as northwest. Backing fire  
19 was observed to the northeast. As BERGLAND worked inward, he began observing  
20 what appeared to be numerous small pieces of conductor scattered in an area  
21 approximately 20-feet by 30-feet (see attachment D, MARTINEZ photographs: P-JM-  
22 198 thru P-JM-200). This area was considered a possible Specific Origin Area (SOA)  
23 because of the presence of downed conductor and fire pattern indicators showing fire  
24 advancing towards the primary structure. Outside of identifying items of interest such  
25 as the observed pieces of conductor, care was taken to avoid disturbing the possible  
26 SOA so it could be gridded out at a later time. Items of interest were identified with  
27 white and hi-vis green pin flags.

28  
29 I observed a high degree of damage to both the PG&E and privately owned conductors,  
30 specifically on sections which would have been suspended over and immediately  
31 adjacent to the residence and private pole 3 (see attachment D, MARTINEZ

1 photographs: P-JM-201, 202, 348, and 360, evidence items E-2 and E-32, and report  
2 authored by BELLINO). The condition of the conductor as found in the possible SOA  
3 exhibited (2) extreme conditions including severely damaged by fire, and relatively  
4 undamaged. The section of conductor relatively undamaged by fire, but within the burn  
5 area, seemed reasonable considering the light ground fuels (see attachment D,  
6 MARTINEZ photograph: P-JM-195). The heavily damaged conductor, lying within the  
7 same fuel type seemed out of place because of the light ground fuels. I considered the  
8 possibility the insulation covered conductor was ignited while suspended, later melted  
9 and fell to the area between the residence and PG&E pole 3 (see attachment D,  
10 ROATH, photographs: IMG\_124 thru IMG\_128). This would result in the light fuels  
11 becoming ignited with the successive fire progression occurring as observed. This  
12 scenario provides taking into consideration the origin being associated with the structure  
13 itself or immediately adjacent to it, causing the structure to become ignited causing  
14 subsequent heat and fire damage to the conductor while it was still suspended. I  
15 identified the grassy area containing the damaged conductor and the structure as the  
16 SOA (see attachment E, General Origin Area & Specific Origin Area Map).

17  
18 Investigators and I searched through debris in the northeast corner of the burned  
19 structure to find remnants of the weather head and conductor (see attachment D,  
20 MARTINEZ photographs: P-JM-158 thru P-JM-172). The weather head and associated  
21 conductor was found and later collected (see attachment D, MARTINEZ photographs:  
22 P-JM-306 and 342, and attachment Q, photograph: 14). Also, observed in the debris  
23 was a section of wood with a rounded edge appearing to be the remnant of a power  
24 pole. This item was later collected as evidence (see attachment D, MARTINEZ  
25 photographs: P-JM-307, evidence item E-11).

26  
27 At approximately 9:30 A.M. LOHSE met with Anne MISSEN at her residence located at  
28 [REDACTED]. The following is a summary of their conversation (see attachment  
29 G, LOHSE):

30  
31 MISSEN was home the night of October 8, 2017. Looking west of from her property,

1 she could see the hill side in front of [REDACTED] (home of RISI). At  
2 approximately 10:00 P.M. MISSEN observed a red glow. She then observed a fire  
3 slowly progress from left (south) to right (north) throughout the night and the next day.  
4 The fire was fighting against the wind to move towards her residence.

5  
6 At 10:00 A.M., ROATH met with witness Mark OLACHEA, who lives at [REDACTED]  
7 South, in Calistoga, CA. On Sunday, October 8, 2017, OLACHEA was at home and  
8 observed the glow of the fire at approximately 10:00 P.M., He exited his residence and  
9 parked his vehicle at a dirt turnout on Bennett Lane near Tubbs Lane. At approximately  
10 1:00 A.M., OLOCHEA took photographs which he provided to ROATH. ROATH  
11 provided OLOCHEA a LE 78 witness statement which he completed (see attachment G,  
12 ROATH, and attachment H).

13  
14 At approximately 12:30 P.M., I took photographs of the GOA and SOA, and the exterior  
15 and interior of the northeast corner of 1128 Bennett Lane property (see attachment D,  
16 MARTINEZ photographs (P- JM-140 thru P-JM-172).

17  
18 At 2:55 P.M. I was forwarded an email prepared by Fire Investigator Ken MILLER (see  
19 attachment J, MILLER). The email was originally provided to NOLT and described  
20 dropped circuit breakers observed by MILLER on Bennett Lane the morning of the  
21 October 10, 2017 (see attachment D, Witness MILLER photographs: DSC\_0094 thru  
22 DSC\_0097). Using the photographs, I was able to determine the pole and the circuit  
23 breakers were no longer in the open position and appeared to have been reset (see  
24 attachment D, MARTINEZ photograph: P-JM-359). This pole is identified in this  
25 investigation as PG&E pole 2, and referenced as the pole with "fuse 773".

26  
27 At approximately 4:00 P.M., LOHSE met with Calistoga Fire Department Engineer Rob  
28 EBLING. The following is a summary of their conversation (see attachment G, LOHSE).

29  
30 EBLING was on duty and assigned on Engine 19 the night of October 8, 2017. EBLING  
31 responded to the initial dispatch arriving just behind Engine 419. EBLING drove down

1 Bennett Lane to protect structures. The fire was just northeast of the address to 1128  
2 Bennett Lane. The fire was backing into the wind to the northeast. EBLING estimated  
3 the furthest east the fire had moved was between the first and second power pole east  
4 of the driveway to 1128 Bennett Lane (the first and second power poles east of the  
5 driveway to 1128 Bennett Lane are PG&E poles 1 and 2). The fire was at an angle  
6 indicating the fire was further northeast up the hill than it was along Bennett Lane. He  
7 did not see any fire northeast of the area he had stopped.

8

9

**Wednesday, October 18, 2017**

10

11 On Wednesday, October 18, 2017 at approximately 8:00 A.M., I arrived at 1128 Bennett  
12 Lane with LOHSE, FRANKLIN, ROATH, and BERGLAND. ROATH and I were  
13 checking the surrounding area looking for additional witnesses. At approximately 8:15  
14 A.M. I entered the Bennett Lane Winery, located at 3340 Hwy 128. While on the  
15 property, I observed a security camera facing generally towards Bennett Lane. ROATH  
16 contacted workers at the facility and was told he should contact Stephanie LONGTON,  
17 who was currently off site. ROATH returned to the winery at approximately 9:00 A.M.  
18 and contacted LONGTON who had access to the video footage. ROATH asked to  
19 review video footage from the camera between 9:30 P.M. and 10:00 P.M. ROATH  
20 observed fire in the upper right hand corner of the video footage at approximately 9:36  
21 P.M. ROATH obtained a copy of the video footage which was collected as evidence.

22

23 At 8:27 A.M., LOHSE interviewed Shawn and Linda THOMPSON (S. THOMPSON and  
24 L. THOMPSON) via cellular phone. The following is a summary of the interview (see  
25 attachment G, LOHSE):

26

27 S. THOMPSON lives at [REDACTED] in Calistoga, CA. S. THOMPSON and L.  
28 THOMPSON were having dinner with Jan RISI (J. RISI) and R. RISI at [REDACTED]  
29 Lane the night of October 8, 2017. They both left and drove home, south on Bennett  
30 Lane at approximately 9:00 P.M. S. THOMPSON was awoken sometime after 9:00 P.M.  
31 by his wife, telling him the smoke detectors were going off. As he got out of bed, he

1 saw flames in the backyard coming down the hill at them. He thought fire was close  
2 enough to spray it with a garden hose. S. THOMPSON was looking uphill, the wind  
3 blowing into his face, and there were embers flying in the wind. The fire was just north  
4 of his residence along a fence line containing metal posts and mesh fence. According  
5 to L. THOMPSON, the house never lost power while they were there. S. THOMPSON  
6 used the electric garage door opener to get their car. L. THOMPSON called 911 at 9:52  
7 P.M. S. THOMPSON noticed fire coming down from where the 1128 Bennett Lane  
8 residence was. He did not see much fire east of his house, but the fire moved  
9 backwards that way, and then much later burned the area east of the 1128 Bennett  
10 Lane driveway.

11  
12 At approximately 9:15 A.M. I drove into the driveway of [REDACTED] and met with  
13 resident Whitney RAMPP. RAMPP told me the following in summary (see attachment  
14 G, MARTINEZ):

15  
16 On the evening of Sunday, October 8, 2017, RAMPP was at home. Sometime before  
17 10:00 P.M. she heard what she thought was a transformer blow. Three to four minutes  
18 later she heard a fire engine go by and stop somewhere up by Bennett Lane. RAMPP  
19 showed me where the fire was and pointed to the hill I knew to be associated with the  
20 1128 Bennett Lane property.

21  
22 At 11:43 A.M., LOHSE and I spoke face to face with R. RISI and J. RISI at their  
23 residence at [REDACTED]. The following is a summary of their  
24 conversation (see attachment G, LOHSE):

25  
26 The THOMPSON'S left their residence at approximately 8:45 P.M. The power went out  
27 a little after 9:00 P.M. R. RISI went to bed a short time later and at an unknown time,  
28 received a phone call from S. THOMPSON (the time stamp from the S. THOMPSON  
29 phone was 9:45 P.M.). S. THOMPSON told R. RISI there a was fire on the hillside and  
30 to get out. He stepped out of his door and saw a glow to the southwest. There was no  
31 fire directly in front of him facing west or to the north and northeast of his location. The

1 glow looked like it was coming from the THOMPSON'S property and somewhere in  
2 between the THOMPSON'S and his neighboring property to the south or southwest. R.  
3 RISI returned to his property at 12:00 A.M. and observed fire starting to go up the  
4 driveway of 1200 Bennett Lane. He estimated the winds at the property prior to the fire  
5 to be approximately 70 to 80 miles per hour.

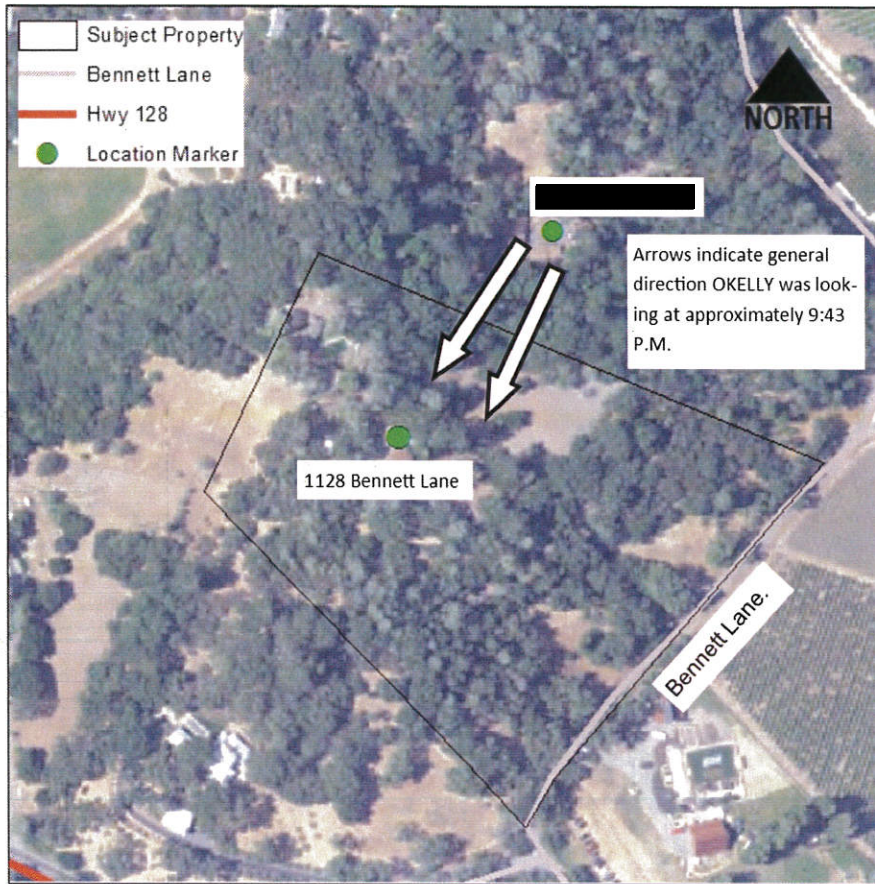
6

7 At 12:45 P.M., I spoke with Peggy OKELLY over the phone and she provided a timeline  
8 of the evening of the fire. On October 19, 2017, she emailed me a timeline of the  
9 events the night of the fire (see attachment J, OKELLY). The following is a summary of  
10 the conversation with her timeline incorporated:

11

12 OKELLY was home at [REDACTED] on the evening of October 8, 2017. At  
13 approximately 9:28 P.M., the power went off. Sometime after 9:43 P.M. she looked out  
14 her window and saw fire coming towards her house. She said it was backing down from  
15 "above." I asked where "above" was and she said it was from where her power comes  
16 from. I confirmed with her she was referring to the 1128 Bennett Lane Property. The  
17 fire had not wrapped around the west or east side of her residence when she left at  
18 approximately 10:15 P.M.





1  
2  
3  
4  
5  
6  
7  
8  
9  
10  
11  
12  
13  
14  
15

At 2:24 P.M., BERGLAND spoke with Theresa JACKSON who was staying at [REDACTED] Hwy 128, in Calistoga, CA. JACKSON told BERGLAND the following in summary (see attachment G, BERGLAND):

JACKSON explained the winds were really out of control, knocking over table umbrellas and shaking the tiles on the roof. The lights flickered approximately five to ten times between 9:00 P.M. and 9:55 P.M. At 9:55 P.M., she received a phone call from her husband, notifying her there was a fire behind the hill of the house she was in.

JACKSON went outside, looked west and didn't see anything. Then, she walked to the south side of the residence and saw the hill on fire above the pig farm at [REDACTED] (YANT residence). JACKSON told BERGLAND, "the fire was spotty and there were long lines of fire between the pig farm and the top of the hill." There was fire on the pig farm side (east side) of the access driveway but no fire on the uphill side (west side).

1 JACKSON provided photos, taken at 10:06 P.M. from the easement road (see  
2 attachment D, JACKSON, photographs: P-TJ-001 and P-TJ-002) that connects to  
3 Bennett Lane. JACKSON did not lose power prior to leaving. She did not see fire in the  
4 area of the PERLISS house located at [REDACTED] while exiting.

5  
6 At approximately 5:00 P.M. BERGLAND and ROATH returned to Bennett Lane Winery  
7 and began to identify the video camera line of sight. BERGLAND and ROATH  
8 estimated where the right extent of the video footage extended to on the ground. The  
9 approximate right extent (northernmost) of the camera appeared to be in line with 1133  
10 Bennett Lane.

11  
12 **Thursday, October 19, 2017**

13  
14 On Thursday, October 19, 2017, I returned to 1128 Bennett Lane at approximately  
15 10:00 A.M. with LOHSE, BERGLAND, ROATH, and FRANKLIN. At approximately  
16 10:30 A.M., BERGLAND and ROATH returned to Bennett Lane Winery and continued  
17 with identifying line of sight for the fixed camera found on Bennett Lane Winery  
18 Property. ROATH and BERGLAND used orange traffic cones to delineate where the  
19 northern extent of the screen would be (see Attachment D, BERGLAND photographs:  
20 P-VB-001 thru 003). After their assessment, they determined the camera angle did not  
21 cover the 1128 Bennett Lane residence, but covered the lower hillside to the south.

22  
23 At approximately 11:00 A.M., NOLT returned to 1128 Bennett Lane to continue his  
24 assessment of the scene. He also utilized the availability of a boom truck to observe  
25 the equipment on PG&E pole 3, private pole 1 and PG&E pole 2. NOLT advised me he  
26 didn't identify any obvious problems with any equipment. NOLT commented it would  
27 nearly be impossible to identify evidence of an electrical caused fire in the structure due  
28 to the fire damage and evidence of high heat from the fire.

29  
30 At approximately 12:00 P.M., I photographed the interior of the residence at 1128  
31 Bennett Lane (see attachment D, MARTINEZ photographs P-JM-173 thru P-JM-190).

1  
2 ROATH photographed fire pattern indicator flags placed by investigation team members  
3 (see attachment D, ROATH photographs 0037 thru 0112) on October 16 and 17, 2017.

4  
5 I assisted LOHSE preparing a scene diagram (see attachment E).

6  
7 At approximately 2:00 P.M., LOHSE met with M. HICKMAN and D. HICKMAN. The  
8 following is a summary of their conversation, including information gathered during  
9 subsequent telephone conversations (see attachment G, LOHSE):

10  
11 The HICKMANS were home the night of the fire. A tree had fallen earlier in the  
12 evening, blocking their driveway. D. HICKMAN walked down to check if the road was  
13 clear and texted M. HICKMAN the road was clear at 9:38 P.M. After she received the  
14 text, her daughter Victoria knocked on the kitchen door and told her, "Mom, there is a  
15 big orange glow". M. HICKMAN looked out a window which faces north, and said it  
16 looked like the wall of trees were on fire. She called 911 at 9:41 P.M. Victoria later told  
17 M. HICKMAN she was looking out the window and saw a flash of light, then saw an  
18 orange glow, then went and told her mother. M. HICKMAN said the lights dimmed prior  
19 to her daughter notifying her. D. HICKMAN said he heard a pop or explosion and was  
20 aware of a light above him to the north. He estimated the light occurred between 9:27  
21 and 9:28 P.M. He didn't look north to see what it was. LOHSE obtained a series of  
22 photographs taken by M. HICKMAN after she evacuated (see attachment D, LOHSE  
23 photographs P-SL-296 thru P-SL-306).

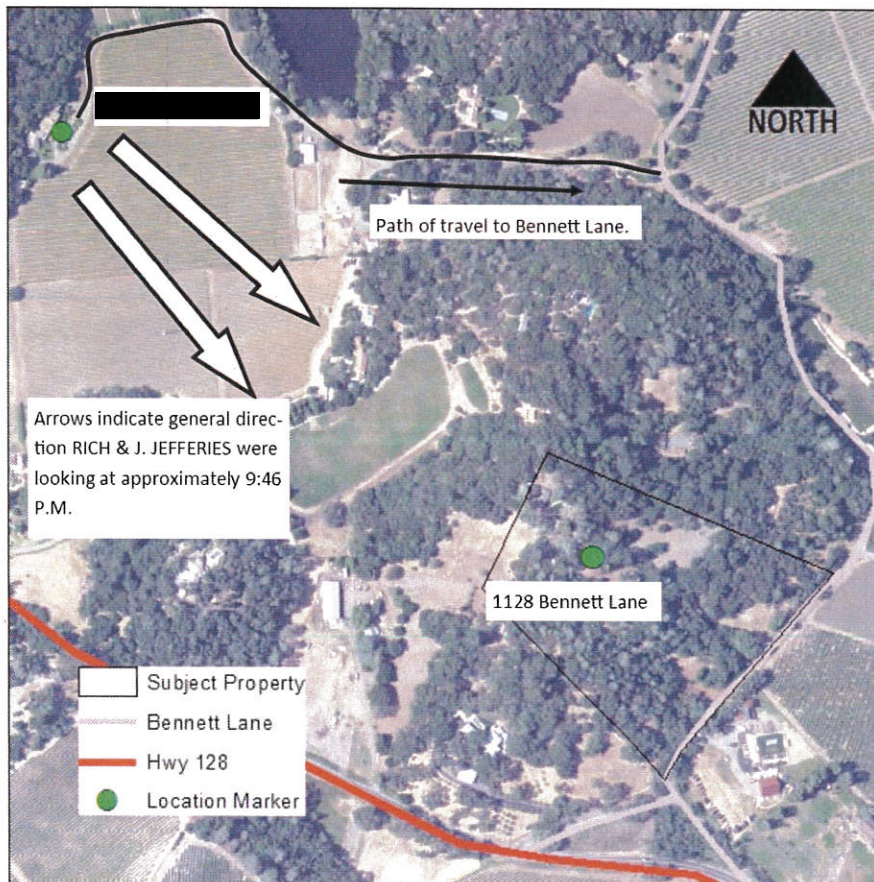
24  
25 At 3:05 P.M., BERGLAND contacted witness Cigi RICH, who lives at [REDACTED]  
26 Lane. The following is a summary of their conversation (see attachment G,  
27 BERGLAND):

28  
29 RICH was home on the evening of Sunday, October 8, 2017, along with fiancé Jordan  
30 JEFFERIES (J. JEFFERIES) and his father Eric JEFFERIES (E. JEFFERIES). The  
31 power went out at approximately 9:00 P.M. At approximately 9:45 P.M. RICH and J.

1 JEFFERIES went outside and observed the fire on the hill across the valley from them.  
2 RICH took two photos from her cell phone while J. JEFFERIES called 911. The photos  
3 were time stamped 9:46 P.M. and 9:49 P.M. (see attachment D, RICH photographs: P-  
4 CR-001 and P-CR-002). When they left the area on an easement road connecting to  
5 Bennett Lane, RICH didn't observe any fire on the left or right side of them. BERGLAND  
6 took a series of "day" photographs to compare to the RICH photographs (see  
7 Attachment D, BERGLAND photographs: P-VB-004 thru P-VB-0017).

8  
9 The 1128 Bennett Lane property is approximately .7 miles southeast of the RICH  
10 property. The first visible hills to the southeast of the RICH property include the area of  
11 1128 Bennett Lane.

12



13  
14

15 Approximately 4:30 P.M., LOHSE and I placed alphabetized placards at items of

1 interest the investigation team had identified. Placards labeled "A" through "Y" were  
2 placed next to items of interest and were then photographed (see attachment D,  
3 MARTINEZ photographs: P- JM-195 thru P- JM-243). The alphabetized placards would  
4 later be replaced as we decided to use numerical identifiers for items collected as  
5 evidence.

6  
7 At approximately 5:50 P.M. BERGLAND contacted Charles DARRALL (C. DARRALL)  
8 and Shannon DARRALL (S. DARRALL) at [REDACTED]. The following is a summary  
9 of their conversation (see attachment G, BERGLAND):

10  
11 The DARRALLS were home on Sunday, October 8, 2017. At approximately 10:15 P.M.,  
12 they saw a flash through their window and heard two loud booms. Both agreed the  
13 sound came from the Bennett Lane direction. From an upstairs location of their house,  
14 they could see a glow through the window.

15  
16 **Friday, October 20, 2017**

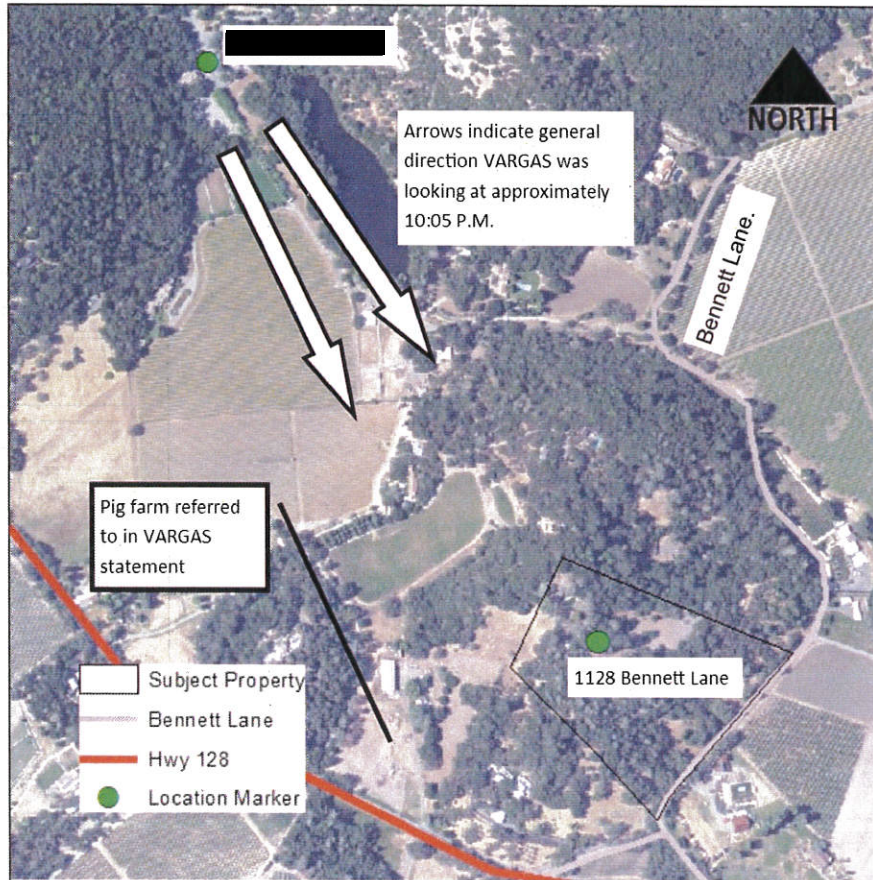
17  
18 On October 20, 2017, I returned to 1128 Bennett Lane at approximately 10:00 A.M. with  
19 LOHSE, BERGLAND, ROATH, AND FRANKLIN.

20  
21 LOHSE and I placed evidence placards in the area of the 1128 Bennett Lane structure.  
22 At approximately 12:00 P.M. I met with KAROLY and the CAL FIRE LIDAR team. I  
23 briefed KAROLY on what I wanted documented, then left the area so they could work  
24 undisturbed. It was estimated it would take the rest of the day and the following day to  
25 complete the assignment of scanning the developed property at 1128 Bennett Lane.

26  
27 At approximately 12:00 P.M., BERGLAND contacted Luis VARGAS at [REDACTED]  
28 Lane. The following is a summary of the conversation (see attachment G,  
29 BERGLAND):

30  
31 VARGAS told BERGLAND power at his residence turned off a little before 9:00 P.M. At  
LE80 (Rev. 7/2011) 63 Officer Initials Jm

1 approximately 10:05 P.M., he went outside and noticed a fire on the hill above the pig  
 2 farm (YANT residence). He departed his residence at approximately 12:00 A.M. and  
 3 saw the fire on the hill to his right while exiting on the road that ties into Bennett Lane.  
 4 He did not notice fire on his left side (north) while exiting. The hillside above the YANT  
 5 residence at [REDACTED] includes both the 1110 and 1128 Bennett Lane properties.



6  
 7

8 At approximately 1:00 P.M., BERGLAND contacted Larry ANDERSON at [REDACTED]  
 9 Lane. The following is a summary of the conversation (see attachment G,  
 10 BERGLAND):

11

12 On the night of October 8, 2017 ANDERSON was at home at [REDACTED]. At  
 13 approximately 10:05 P.M. E. JEFFERIES was at the door and told him there was fire on  
 14 the hill behind his house. He evacuated his house and drove the easement road to  
 15 Bennett Lane and turned right, driving past 1177 Bennett Lane. He stopped at a gravel

1 road with a metal gate and observed a fire ahead of him. He describes the fire as, "a  
2 line of fire from the road edge toward the top of the hill". He returned home where he  
3 took some photographs (see attachment D, ANDERSON photographs: P-LA-001 thru  
4 P-LA-005). Later, after he left his house, he took additional photographs and a video  
5 (see attachment D, ANDERSON photographs: P-LA-006 thru P-LA-020).

6  
7 At approximately 4:20 P.M., BERGLAND contacted Anthony PERLISS at [REDACTED]  
8 Lane. The following is a summary of the conversation (see attachment G,  
9 BERGLAND):

10  
11 Between 9:00 P.M. and 10:00 P.M., on October 8, 2017, PERLISS was at home and  
12 noticed the lights flicker 2 to 3 times. At approximately 10:10 P.M. PERLISS went  
13 outside and while in the driveway looking south, he observed a glow toward the pergola,  
14 south of the main residence. He walked to the south to inspect the glow. Halfway to  
15 the pergola, he noticed the fire. He described the fire to be like lava, low to the ground,  
16 with little to no flames. He did not smell any smoke. He went down to the pergola and  
17 the fire had not gone past it towards the main house. PERLISS said everything he  
18 could see towards Hwy 128 appeared to have burned. He texted his girlfriend at 10:37  
19 P.M. and told her the situation. He and his girlfriend exited through an easement road  
20 towards Hwy 128 and there was fire on both sides of the easement road.

21  
22 At approximately 4:45 P.M., I walked to 1200 Bennett Lane and photographed the  
23 residence and associated property. While inspecting the service drop from the 1128  
24 Bennett Lane property to the 1200 Bennett Lane property, a conductor was observed  
25 running through a tree uphill from the residence. While on the property I observed and  
26 photographed remnants of Romex and extension cords running uphill on a dirt trail from  
27 the 1200 Bennett Lane residence to a wooden viewing platform, destroyed during the  
28 fire (see attachment D, MARTINEZ photographs P-JM-279 thru P-JM-288). It was later  
29 determined after talking to OKELLY and BROWN JR., the viewing platform did not have  
30 electrical power running to it for a number of years. Additionally, I did not observe any  
31 evidence of the romex or extension cord connecting to any power source on the

1 residence. I excluded it as a possible ignition source.

2  
3 **Saturday, October 21, 2017**

4  
5 On Saturday, October 21, 2017, Investigators stayed off site to avoid disturbing the  
6 LIDAR team.

7  
8 At 11:20 A.M. LOHSE spoke with the owner of [REDACTED], Charlie BROWN JR.  
9 via cellular phone. The following is a summary of their conversation (see attachment G,  
10 LOHSE):

11  
12 BROWN JR. was asked about Romex and electrical wiring leading from the southeast  
13 corner of the main structure and going uphill to a small structure. He stated a contractor  
14 built a viewing platform and installed the wiring to be used for it. It has not been used for  
15 years.

16  
17 I was informed by KAROLY at approximately 7:00 P.M. the LIDAR team had completed  
18 their assignment, and would not be on site the following day.

19  
20 **Sunday, October 22, 2017**

21  
22 On Sunday October 22, 2017, at approximately 8:30 A.M., I traveled to 69 Lerner Drive,  
23 in Calistoga to follow up on a report of a wildland fire, described in a Calistoga Police  
24 Department report provided to CAL FIRE (see attachment I). HOSKINS responded to  
25 [REDACTED] Drive On October 8, 2017 prior to the Tubbs Fire dispatch, and upon arrival  
26 found the fire already out. [REDACTED] Drive is approximately 5 miles southeast of the  
27 SOA. I arrived at [REDACTED] and met with Katie SERENI who told me the following:

28  
29 While at home on Sunday, October 8, 2017, she observed what looked like fire on one  
30 of the overhead power lines. She then saw a branch on fire approximately 30 to 40-feet  
31 away on the ground. The branch self-extinguished and was put into the bucket of a



1 backhoe and left there. There was no additional fire in the area. She was unsure what  
2 time the event occurred, but thought it was around 10:15 P.M. I photographed the  
3 remains of a charred tree limb found on the ground and in the bucket, as well as the  
4 span overhead. There was no visible damage to the overhead conductor. (see  
5 attachment D, MARTINEZ photographs P-JM-289 thru P-JM-293).

6  
7 After meeting with SERENI, I drove to 1128 Bennett Lane arriving at approximately  
8 10:00 A.M., where I met with Robert TRUMBALL and Daniel DAVIS of PG&E. The  
9 purpose of our meeting was to collect Smart Meters as evidence from properties  
10 surrounding the 1128 Bennett Lane property. TRUMBALL and DAVIS assisted me with  
11 the collection of Smart Meter's from 1200 Bennett Lane (evidence item 20), 1177  
12 Bennett Lane (evidence item 21) and 1110 Bennett Lane (evidence item 22)  
13 (photographs P-JM-294 thru P-JM-299).

14  
15 I was advised by ZIMMERMAKER, that two additional CAL FIRE Investigators would be  
16 performing a peer review of the origin and cause investigation. This was done to test  
17 the determination made by the investigation team. Physical identifiers such as colored  
18 flags and evidentiary placards would have to be removed as to not influence the  
19 investigators in their review.

20  
21 At approximately 1:00 P.M., LOHSE and I determined items to be collected as evidence  
22 and placed numbered placards 1 through 12 next to the identified items. Items were  
23 then photographed so they could be identified later when collected, following the second  
24 opinion field review.

25  
26 **Monday, October 23, 2017**

27  
28 On October 23, 2017, at approximately 10:00 A.M. I met with CAL FIRE Deputy Chief  
29 Jeremy MONROE and Fire Captain Darren STEWART at 1128 Bennett Lane in  
30 Calistoga. Prior to their arrival, myself and LOHSE, BERGLAND, and ROATH pulled all  
31 fire pattern indicator pin flags and placards from the subject property. White pin flags

1 were maintained within the SOA to assist investigators to identify the location of  
2 evidence. Prior to MONROE and STEWART beginning their investigation, the  
3 investigation team provided a briefing which included witness statements and  
4 photographs. The team also oriented MONROE and STEWART to the surrounding  
5 properties. No information was provided regarding evidence, any working hypothesis,  
6 or any formulated opinions. Once the briefing was complete, MONROE and STEWART  
7 were left to begin their investigation.

8  
9 At approximately 11:00 A.M., I met with representatives from the State of California  
10 Public Utilities Commission (CPUC) including Deputy Director Lee PALMER, Deputy  
11 Executive Director Maryam EBKA, Utilities Engineer Raymond CHO, and Utilities  
12 Engineer Wilson TSAI. I briefed CPUC representatives on the electrical systems I had  
13 identified on the property and informed them of what PG&E equipment I had collected  
14 and what I intended to collect. CPUC members inspected the area and took some  
15 photographs of the electrical systems. I confirmed with CPUC members the  
16 responsibility of PG&E versus the landowner with regards to the service drop. It was  
17 my understanding through the course of the meeting that PG&E has responsibility from  
18 the service drop to the weather head. I was told Raymond CHO would be my contact  
19 regarding this case. CPUC staff left the scene at approximately 12:20 P.M.

20  
21 **Tuesday, October 24, 2017**

22  
23 On TUESDAY, October 24, 2017 at approximately 12:30 P.M., STEWART and  
24 MONROE arrived on scene and continued their peer review examination of the initial  
25 GOA determination. At approximately 6:45 P.M. they completed their examination of  
26 the scene and returned to their hotel. I was contacted by STEWART and MONROE by  
27 telephone, and advised they had determined the area exterior and to the rear of the  
28 residence to be the GOA. Once they were satisfied with a GOA, they did not continue  
29 further to determine an SOA, to avoid any disturbance to the scene. They advised me  
30 they would be preparing and submitting a supplemental report of their findings.

1 **Wednesday, October 25, 2017**

2

3 On Wednesday, October 25, 2017 I arrived on scene at approximately 8:30 A.M. and  
4 briefed the team on collecting evidence. LOHSE, ROATH, CAL FIRE Captain Brandon  
5 BERTOLINO, and CAL FIRE Captain Kyle STEIS assisted.

6

7 At approximately 9:00 A.M. LOHSE and I began photographing and collecting items of  
8 evidence beginning with evidence item 19 and working backwards until evidence item  
9 E-2 was collected (see attachment D, MARTINEZ photographs P-JM-314 thru P-JM-  
10 349). A non-sequential order of collection was done to allow Investigator's to perform a  
11 grid search within the SOA.

12

13 ROATH, BERTOLINO, and STEIS performed a grid search, photographed and  
14 collected a series of wire fragments in the SOA adjacent to the house (Evidence Item E-  
15 1 with categorized subsets based on the grid section (see attachment D and O)

16

17 At approximately 12:00 P.M., LOHSE and I continued collecting and photographing  
18 evidence items 23 through 26 (see attachment D, MARTINEZ photographs: P-JM-350  
19 thru P-JM-357). Evidence items E-20 through E-22 were collected on October 22,  
20 2017).

21

22 At approximately 1:00 P.M., I met with CAL FIRE Forester II Charlie MARTIN at the  
23 origin site. MARTIN was requested to evaluate the general condition of the trees on the  
24 property, specifically those adjacent to the 1128 Bennett Lane residence.

25

26 The CPUC and PG&E were expected to arrive on scene at approximately 1:00 P.M. to  
27 observe and assist with the collection of evidence identified as PG&E property.

28 Representatives of the CPUC arrived on scene at approximately 1:00 P.M. and PG&E  
29 arrived shortly after. I met with PG&E representative Maria DELUCA and I advised her  
30 what items I would be collecting. I observed while PG&E staff removed the identified

31 property and turned it over to me (see attachment D, MARTINEZ photographs: P-JM-  
LE80 (Rev. 7/2011)

1 358 thru P-JM-361). In all, we collected in total (7) fuse assemblies from PG&E poles 1  
2 thru 3, and (1) PG&E line drop from PG&E pole 3 to the 1128 Bennett Lane residence  
3 (evidence items E-27 through E-34).

4  
5 All evidence collection was completed at approximately 4:00 P.M. and was handed over  
6 to STEIS, who took custody of, and transported it to the Sonoma Lake Napa Unit (LNU)  
7 Headquarters at 2210 West College Ave in Santa Rosa, CA, where it was placed in the  
8 evidence locker.

9  
10 In January 2018, I received a report from MARTIN on his evaluation of trees  
11 surrounding the burned structure at 1128 Bennett Lane, and the overall stand of trees  
12 in, and around, the developed portion of the property. MARTIN provided photographs  
13 with graphics as well as a diagram (see attachment M). The following is a summary of  
14 his findings:

15  
16 The primary species in and surrounding the developed property of 1128 Bennett Lane  
17 include coast live oak, Douglas-fir, coast redwood, foothill pine, along with various shrub  
18 species. MARTIN did not observe significant defects on the main trunks or branches of  
19 trees surrounding the developed portion of the property. Trees near the structure  
20 showed signs of pruning on the lower branches. Trees #1 and #2, which are located  
21 immediately adjacent to the structure on the northeast side had signs of heart rot in the  
22 main trunk and lateral branches, and showed signs of poor pruning cuts. Tree #1  
23 showed hollow and burned out broken branches and burned out pruning wounds. Other  
24 than heart rot in both trees, there were no signs of insect or pathogen pests that would  
25 significantly impact individual trees on the property. Based on the number of cavities  
26 observed on trees #1 and #2, MARTIN concluded there was a significant amount of  
27 heart rot in the main scaffold branches and lateral branches. By decaying the central  
28 wood of a trunk or branch, heart rot fungi can significantly weaken the structure of a  
29 tree.

30  
31 I did not observe any charred remains of branches observed within the SOA.



1  
2  
3  
4  
5  
6  
7  
8  
9  
10  
11  
12  
13  
14  
15  
16  
17  
18  
19  
20  
21  
22  
23  
24  
25  
26  
27  
28  
29  
30  
31

On Thursday, January 25, 2018 at approximately 1:00 P.M., I received a supplemental investigation report prepared by STEWART and MONROE. In summary, STEWART and MONROE determined the area exterior to the rear of the residence to be the GOA. They were unable to determine an SOA due to lack of micro scale indicators available to examine (see attachment N).

On January 26, 2018 at approximately 3:00 P.M., I spoke with trial lawyer James FRANTZ with Frantz Law Group, out of Santa Rosa, CA. FRANTZ told me he was in possession of information regarding the location and cause of the Tubbs Fire and he was willing to share the information with me. The information would be available the following day in Santa Rosa. I arranged for BERTOLINO to meet with FRANTZ and receive the information.

On Saturday, January 27, 2018 BERTOLINO, met with FRANTZ at the Hyatt Regency Hotel in Santa Rosa and was provided a thumb drive containing a Power Point presentation (see attachment J, FRANTZ). BERTOLINO mailed me the thumb drive with the presentation. In summary, the material provided suggests the Tubbs Fire originated near 1318 Bennett Lane, a location approximately 2200-feet northeast of the SOA. The determination of the GOA and overall fire progression, including witness statements, indicate this location was not consumed by fire until well after the fire was reported and established. The 1318 Bennett Lane location was eliminated as a fire origin.

On March 8, 2017, at approximately 10:50 A.M., I met NOLT in Santa Rosa at the CAL FIRE LNU Headquarters to review physical evidence. We examined the conductor associated with private pole 1. All sections of conductor had heat and fire damage consistent with an external source such as a burning pole. This was evident by the observation of damage to the underside of the conductor jacket and tape. Also, there was no indication of arcing found on any of the conductor associated with private pole 1.

1 Following the review of the private electrical system, NOLT looked at the fuse  
2 assemblies collected from PG&E. The fuses found in PG&E pole 2 (pole 773) were 25  
3 Amp fuses. We examined the fuse assemblies from PG&E poles 1 and 3 and observed  
4 no obvious signs of damage. During the review, NOLT was unable to open and identify  
5 the fuse type in PG&E poles 1 and 3.

6  
7 After NOLT finished his examination, I left Santa Rosa and drove to Anamet, INC in  
8 Hayward, CA, where I met with Testing Manager M. Dilip BHANDARKAR and James  
9 BELLINO. I transferred custody of the evidence items I determined to have tested  
10 (evidence items E-1, E-2, E-5, E-25 and E-32) to BELLINO at 4:10 P.M (see attachment  
11 F).

12  
13 PG&E has provided numerous data files to ZIMMERMAKER, who transferred then to  
14 me. Any data not referenced in this report has been retained on a storage device kept  
15 in the evidence locker in LNU.

16  
17 On June 27, 2018, at approximately 9:00 A.M. I met with NOLT and BERTOLINO at  
18 PG&E Technology Center at 3400 Crow Canyon Road San Ramon, CA. BERTOLINO  
19 brought Smart Meters from 1200, 1110, and 1177 Bennett Lane (evidence items E-20,  
20 E-21, and E-22). At approximately 11:00 A.M. Smart Meter Data was extracted by Itron,  
21 Inc technicians. The raw data was handed over to CAL FIRE on a thumb drive and  
22 collected as evidence. The Evidence items were returned to BERTOLINO, who  
23 transported them back to the LNU Evidence locker at 2210, West College Avenue,  
24 Santa Rosa, CA (see attachment F).

25  
26 On September 17, 2018, I was contacted by Regina Bagdasarian (BAGDASARIAN), a  
27 Lawyer with the FRANTZ LAW GROUP. BAGDASARIAN informed me their  
28 investigator, Michael Schulz, had compiled some definitive information on the origin of  
29 the Tubbs Fire that he wanted to share it with me. I contacted BALDWIN who informed  
30 me BERTOLINO would pick up the information from SCHULZ in Santa Rosa later in the  
31 month (see attachment J, FRANTZ).

1

2 On September 19, 2018, I received a draft report authored by BELLINO, on the  
3 metallurgical evaluation of the five samples exposed to the fire at 1128 Bennett Lane.  
4 The samples submitted for analysis included evidence items E-1, E-2, E-5, E-25, and E-  
5 32. In summary, the report reached the following conclusion: (see attachment P):

6

7 "No evidence that the system was energized at the time conductors were severed was  
8 observed in the samples submitted. If the conductors were charged when they were  
9 severed and fell to the ground, the physical evidence of that condition, namely electric  
10 arcing, was destroyed by extensive fire exposure and melting."

11

12 On September 24, 2018, I spoke with Fire Investigator Mike COLE, who told me he was  
13 an investigator for insurance companies. He had obtained cell phone video footage  
14 from an unknown witness. COLE told me the video had been analyzed and it was  
15 determined the fire had originated from the top of the hill near the ZINC house on the  
16 1128 Bennett Lane property. I requested a copy of the video.

17

18 On September 28, 2018, BERTOLINO received a thumb drive containing a Power Point  
19 presentation identified by BAGDASARIAN, named "Tubbs Fire, Investigative Update,  
20 September 27, 2018" (see attachment J, FRANTZ). BERTOLINO mailed me the thumb  
21 drive with the presentation. In summary, the material provided suggests the Tubbs Fire  
22 originated on the hillside along Bennett Lane, on the 1128 Bennett Lane property, in the  
23 vicinity of the satellite dish or PG&E conductor running parallel to Bennett Lane. Upon  
24 review, CAL FIRE Investigators determined this area was not within the GOA, utilizing  
25 macro indicators observed at the scene.

26

27 On October 12, 2018 I was emailed a copy of video footage from COLE which was put  
28 onto a thumb drive and stored as evidence. In the email, COLE explained the  
29 dashboard time in the vehicle is 9:58 P.M., but the record time was 9:45 P.M., as  
30 determined by the metadata (not provided). COLE claims the video was recorded along  
31 Hwy 128 just north of Tubbs Lane (see attachment J, COLE).

1  
2  
3  
4  
5  
6  
7  
8  
9  
10  
11  
12  
13  
14  
15  
16  
17  
18  
19  
20  
21  
22  
23  
24  
25  
26  
27  
28  
29  
30  
31

On November 15, 2018, I received a copy of a letter to CAL FIRE counsel Bruce CRANE from PG&E Counsel Elizabeth COLLIER (see attachment R). In summary, the letter clarifies Fuse 773 (PG&E pole 2) operated on October 8, 2017 at 9:20 PM, de-energizing residences downstream, including 1128, 1200, and 1177 Bennett Lane.

On December 11, 2018, I received a final report authored by BELLINO on the metallurgical evaluation of the five samples exposed to the fire at 1128 Bennett Lane. The samples submitted for analysis included evidence items E-1, E-2, E-5, E-25, and E-32. In summary, the report reached the following conclusion: (see attachment P):

“No evidence that the system was energized at the time conductors were severed was observed in the samples submitted. If the conductors were charged when they were severed and fell to the ground, the physical evidence of that condition, namely electric arcing, was destroyed by extensive fire exposure and melting.”

On December 26, 2018, I received a final report from NOLT on his observations on the ignition source of the Tubbs Fire. In his Abstract, NOLT writes; “The source of ignition for the wild land fire in the subject area was electrically undetermined because of the severe damage to the electrical equip in and around 1128 Bennett Ln. Further, while PG&E automatic equipment (smart meters, SCADA, reclosers, etc.) responded to and documented some of the fire progression events, the combination of physical evidence, data, witness statements, videos, etc. do not confirm that PG&E equipment was the source of ignition”. NOLT further discusses that if an electrical fault within the wiring at 1128 Bennett Lane was responsible for the 2-25A fuses blowing on pole 773 (PG&E pole 2), then the 2-3A fuses on PG&E pole 3 would have also been blown and they were not. NOLT also states; “It is therefore more likely the 2-25A fuses blowing is the result of some other source of load increase like; occupant demand, occupant fire suppression, or some other undetermined phenomenon”.



1 Under point 5 of his report, NOLT discusses the lack of physical evidence near the  
2 residence, normally used to evaluate, was not present because it was all consumed by  
3 fire. He goes on further to stating; "Any subsequent fire induced melting of a conductor  
4 can destroy the fine melt details of an arced conductor. This fire induced conductor  
5 melting destroys the evidence of any possible arcing ignition". No such evidence was  
6 found by NOLT.

7

### 8 **Opinions and Conclusion:**

9

10 Based on my training, education and experience, investigation team input, witness  
11 statements, expert evaluations, and evidence collected, I have formed opinions on the  
12 origin and cause of the Tubbs Fire.

13

14 A PG&E service drop, privately owned conductor and equipment, and several aluminum  
15 conductor fragments were recovered. Fire pattern indicators showed fire spread  
16 towards the structure, indicating an ignition in the light fuels between the structure and  
17 PG&E pole 3. However, there is no evidence showing the conductors were "charged"  
18 when they were severed and fell to the ground, as described by BELLINO. The  
19 condition of the conductors suggests they were suspended while exposed to sustained  
20 heat and flames from heavy fuels such as burning vegetation or a structure. This is  
21 further corroborated by the light flashy fuels present where the conductors came to rest,  
22 which would not provide the sustained heat and flame needed to damage the  
23 conductor, further suggesting the fire damage occurred while suspended.

24

25 The fire pattern indicators observed in the light ground fuels immediately east of the  
26 structure are likely a secondary ignition from the already burning, "uncharged" PG&E  
27 service drop and private conductor after they fell to the ground. The aluminum  
28 conductor fragments are likely a result of the conductor fracturing from heat.

29

30 PG&E hardware was collected as evidence from PG&E pole 3 and was found to be  
31 undamaged and in good repair. Fuses collected from PG&E pole 3 were rated 3-AMP,  
LE80 (Rev. 7/2011)

1 found in good condition, and showed no evidence of operating. If an event would have  
2 occurred, such as a tree or limb falling on PG&E equipment between PG&E pole 3 and  
3 the roof top weather head, causing damage, this in theory would result in the 3-AMP  
4 fuses on the PG&E transformer operating, protecting the PG&E equipment between the  
5 weather head and Bennett Lane. The fact that the PG&E 3-AMP fuses did not operate  
6 in addition to the metallurgist finding no evidence of conductivity on these conductors at  
7 the time of their break, provides no evidence supporting the PG&E conductor and/or  
8 equipment between PG&E pole 3 and the weather head as causes of the fire.

9 Therefore, it is unlikely PG&E equipment is responsible for causing the Tubbs Fire.

10  
11 Fuse 773 is located on Bennett Lane, just east of the 1128 Bennett Lane driveway.  
12 This fuse was reported as operating (opening the circuit) at approximately 9:20 P.M., on  
13 October 8, 2017. The fire was initially reported at approximately 9:41 P.M. The PG&E  
14 pole 3 contains 3-AMP fuses with the objective of protecting the main PG&E distribution  
15 lines from an event at the 1128 Bennett Lane residence. In theory, if an event  
16 happened at the 1128 Bennett Lane residence between PG&E pole 3 and the  
17 residence, the 3-AMP fuses would operate and not the 25 AMP fuses at Fuse 773. The  
18 fact that Fuse 773 operated, but the 3-AMP fuses did not, provides further evidence an  
19 event causing damage and a fault did not occur between PG&E pole 3 and the 1128  
20 Bennett Lane residence while there was electricity at the 1128 Bennett Lane Property  
21 (prior to 9:20 P.M.). However, these facts stated in this paragraph do not eliminate a  
22 structure fire or a fault on the private conductor line at 1128 Bennett Lane from  
23 occurring prior to 9:20 P.M. This is due to the fact if an event occurred on the private  
24 conductor line and/or privately owned electrical equipment at the 1128 Bennett Lane  
25 residence, this in theory would result in the electrical circuit breakers at the residence  
26 operating, shutting off power to the electrical meter and disconnecting the circuit to the  
27 PG&E service drop. This in theory would not result in the PG&E pole 3, 3-AMP fuses  
28 operating, and would keep them in the position they were found when collected as  
29 evidence. In summary, these facts stated above disprove the theory of the PG&E  
30 conductor and equipment between PG&E pole 3 and the 1128 Bennett Lane residence  
31 as a cause of the fire. However, these facts stated above still leave the possibility of a

1 fire cause by the structure and/or private conductor lines at the 1128 Bennett Lane  
2 property.

3

4 At the 1128 Bennett Lane residence, after the service drop, electrical power was  
5 redistributed to the residence, associated structures, and water pump and well via  
6 privately owned conductor and equipment. According to ANDREWS, caretaker of the  
7 property, there was no gas service in the residence and power was on the day of the  
8 fire. Private pole 3, which was located immediately adjacent to the residence was the  
9 primary distribution pole for private conductor extending northwest towards the pool  
10 area and southeast towards the water pump station. Private pole 3 was identified to be  
11 replaced in the near future by ANDREWS, because of its weakened condition. It was  
12 completely consumed by fire, with the exception of a small piece observed next to the  
13 pole's burned out hole. The privately owned electrical hardware was destroyed during  
14 the fire and no evidence of an electrical event was observed.

15

16 However, the existence of private pole 3 on the north side of the residence provides  
17 some theory of explanation for the lack of evidence of an electrical event found on the  
18 private conductor. Due to the light ground fuels to the north of private pole 3, it is my  
19 opinion as a fire investigator, if the pole fell to the north into this vegetation, we would  
20 have found the pole more in-tact, due to low fire intensity. If the pole fell to the south,  
21 this would pull the private conductor on top of the structure, which burned upwards of  
22 1981 degrees Fahrenheit, based on the presence of melted copper found within the  
23 structure. This theory of the private conductor evidence being consumed by the  
24 structure fire provides an explanation as to why no evidence of the private conductor  
25 being energized at the time of the fire was found by the metallurgist. The electrical  
26 meter and circuit breakers associated with the structure were also destroyed by the fire.  
27 If these items were preserved, it would further clarify the cause of the fire. Gathered  
28 data, evidence, fire indicators, and witness statements established within this  
29 investigation, provide no evidence to disprove the structure itself or the private  
30 conductor line at 1128 Bennett Lane as a cause of the fire. If an event occurred, such  
31 as a tree, limb, or pole falling, causing trauma to the privately-owned conductor,

1 evidence of such an event was not observed.

2

3 In summary, after a thorough, systematic investigation, taking into account witness  
4 statements, expert opinion, physical evidence, collected data, and fire indicators, the  
5 origin of the Tubbs Fire is the primary residential structure and immediate area  
6 surrounding the structure at 1128 Bennett Lane. During my investigation, I eliminated all  
7 other causes for the Tubbs Fire, with the exception of an electrical caused fire  
8 originating from an unknown event affecting privately owned conductor or equipment.

9

10

11 \*I reserve the right to amend or augment my opinion if new information is provided to, or  
12 discovered by me at a later date.

13

14

15

 1-20-19  
Signature Date

16

17

18

John MARTINEZ, #2987

19

Battalion Chief

20

CAL FIRE San Mateo-Santa Cruz Unit

21

**10 - ATTACHMENTS:**

- A. Weather conditions discussion prepared by CAL FIRE North Ops predictive services
- B. FC-34 Interagency Report of Incident and Dispatch Action
- C. Tubbs Damage Inspection Report (report appendix A provided on disk).
- D. Photographs
  - 1. MARTINEZ
  - 2. LOHSE
  - 3. ROATH
  - 4. BERGLAND
  - 5. STEIS
  - 6. MARTIN
  - 7. MONROE/STEWART
  - 8. RICH
  - 9. HOSKINS
  - 10. ANDERSON
  - 11. MILLER
  - 12. WITNESS/LOHSE
  - 13. COMPARISON
  - 14. JACKSON
- E. Incident sketches and diagrams
- F. Evidence log/Chain of custody
- G. CAL FIRE LE 71, Supplemental Reports
  - 1. FRITS
  - 2. MARTINEZ
  - 3. LOHSE
  - 4. BERGLAND
  - 5. ROATH

6. FRANKLIN
7. BERTOLINO
- H. CAL FIRE LE 78, Witness Statements
- I. HOSKINS report – Calistoga Police Department
- J. Additional shared information
  1. MILLER
  2. FRANTZ
  3. OKELLY
  4. COLE
- K. LE-100 inspection report for 1128 Bennett Lane
- L. LIDAR mapping exhibit
- M. Forester II MARTIN supplemental report
- N. Peer Review – MONROE and STEWART
- O. SOA Grid Search
- P. Metallurgist Report
- Q. Electrical Engineer Report.
- R. PG&E Correspondence

# **ATTACHMENT B**

## **CAL FIRE Evidence List**



# EVIDENCE LOG

STATE OF CALIFORNIA  
DEPARTMENT OF FORESTRY AND FIRE PROTECTION  
LE 75e (REV. 7/2011)

INCIDENT NUMBER	17CALNU010045
CASE NAME	TUBBS

DAY	MONTH	DATE	YEAR	COUNTY	REGION	UNIT	CASE NUMBER
Sun	Oct	8	2017	Napa	CNR	LNU	

ITEM NO	DATE COLLECTED	TIME COLLECTED	COLLECTED BY	ITEM DESCRIPTION	LOCATION
E-1	10/25	10:00 AM	Greg ROATH	Assorted wire fragments from grid location, multiple items labeled by location within assembled grid.	1128 Bennett Lane, grid
E-2	10/25	11:55 AM	John MARTINEZ	Private line conductor, 21 feet	1128 Bennett Ln, NE corner
E-3	10/25	11:38 AM	John MARTINEZ	Cable wire from main residence to PG&E pole, 21 feet	1128 Bennett Ln, NE corner
E-4	10/25	11:28 AM	John MARTINEZ	Copper wire with metal conduit near destroyed private wooden pole	1128 Bennett Ln, E/F corner
E-5	10/25	11:22 AM	John MARTINEZ	Weather-head from main structure with metal conduit and wiring	1128 Bennett Ln, F side
E-6	10/25	11:15 AM	John MARTINEZ	Electrical box 1 from main structure	1128 Bennett Ln, G side
E-7	10/25	11:13 AM	John MARTINEZ	Electrical box 2 (main) from main structure with electric meter	1128 Bennett Ln, G side
E-8	10/25	11:11 AM	John MARTINEZ	Electrical box 3 from main structure	1128 Bennett Ln, G side
E-9	10/25	11:09 AM	John MARTINEZ	Electrical box 4 from main structure	1128 Bennett Ln, G side
E-10	10/25	11:07 AM	John MARTINEZ	Electrical box 5 from main structure	1128 Bennett Ln, G side



E-11	10/25	10:56 AM	John MARTINEZ	Remains of wooden post	1128 Bennett Lane, E side
E-12	10/25	10:45 AM	John MARTINEZ	Private aluminum wiring from D/E corner of the main structure	1128 Bennett Ln, D/E corner
E-13	10/25	10:42 AM	John MARTINEZ	Electrical box within Northeast corner addition of main structure (1)	1128 Bennett Ln, C/D corner
E-14	10/25	10:41 AM	John MARTINEZ	Electrical box within Northeast corner addition of main structure (2)	1128 Bennett Ln, C/D corner
E-15	10/25	10:36 AM	John MARTINEZ	Electrical box within Northeast corner addition of main structure (3)	1128 Bennett Ln, C/D corner
E-16	10/25	10:33 AM	John MARTINEZ	Insulator with wire loop	1128 Bennett Ln, C/D corner
E-17	10/25	10:30 AM	John MARTINEZ	Electrical fuses in storage	1128 Bennett Ln, E side
E-18	10/25	10:09 AM	John MARTINEZ	2x4 wood member with electrical insulator	1128 Bennett Ln, B/C corner
E-19	10/25	9:55 AM	John MARTINEZ	End of private electrical line from main structure to "pool house," 21 feet measured from pool house	1128 Bennett Ln, pool house
E-20	10/22	9:50 AM	John MARTINEZ	1200 Bennett Lane smart meter	1200 Bennett Lane
E-21	10/22	10:00 AM	John MARTINEZ	1177 Bennett Lane smart meter	1177 Bennett Lane
E-22	10/22	10:10 AM	John MARTINEZ	1110 Bennett Lane smart meter	1110 Bennett Lane
E-23	10/25	1:08 PM	John MARTINEZ	Melted cluster of possible wiring	1128 Bennett Ln, F side
E-24	10/25	1:11 PM	John MARTINEZ	Wire with insulator along F side wall of main structure	1128 Bennett Ln, F side
E-25	10/25	1:38 PM	Scott LOHSE	Rock with possible wire slag, including electrical wire fragments from Northeast side of structure along rock pathway	1128 Bennett Ln, rock pathway

E-26	10/25	1:40 PM	Scott LOHSE	Wooden post with attached electrical box used to supply water pump near water tank along driveway	1128 Bennett Lane
E-27	10/25	1:33 PM	PG&E	Fuse #1 from power pole #1 (white flag) from Bennett Lane roadway, East of pole 773	Bennett Lane
E-28	10/25	1:40 PM	PG&E	Fuse #2 from power pole #1 (blue flag) from Bennett Lane roadway, East of pole 773	Bennett Lane
E-29	10/25	2:51 PM	PG&E	Fuse #3 from power pole 773 (pole #2, red flag) from Bennett Lane roadway	Bennett Lane, pole 773
E-30	10/25	2:55 PM	PG&E	Fuse #4 from power pole 773 (pole #2, blue flag) from Bennett Lane roadway	Bennett Lane, pole 773
E-31	10/25	3:00 PM	PG&E	Fuse #5 from power pole 773 (pole #2, white flag) from Bennett Lane roadway	Bennett Lane, pole 773
E-32	10/25	4:06 PM	PG&E	PG&E electrical drop line from PG&E power pole to 1128 Bennett Lane main structure	1128 Bennett Lane PG&E pole
E-33	10/25	4:16 PM	PG&E	Fuse #6 from PG&E power pole #3 (electrical drop to main structure, white flagging)	1128 Bennett Lane PG&E pole
E-34	10/25	4:21 PM	PG&E	Fuse #7 from PG&E power pole #3 (electrical drop to main structure, blue flagging)	1128 Bennett Lane PG&E pole
E-35	10/25	4:54 PM	John MARTINEZ	Private wiring from East side of private pole near water pump and tank	1128 Bennett Lane, pole with star
E-36	10/25	5:00 PM	John MARTINEZ	Private wiring from Northeast side of private pole near water pump and tank	1128 Bennett Lane, pole with star
E-37	10/25	5:04 PM	John MARTINEZ	Private wiring from West side of private pole near water pump and water tank	1128 Bennett Lane, pole with star
E-38	10/12	5:22 PM	John MARTINEZ	Wire fragment next to the 4 x 4 wooden post near water tank	1128 Bennett Ln





# PROPERTY REPORT

STATE OF CALIFORNIA  
DEPARTMENT OF FORESTRY AND FIRE PROTECTION  
LE 92 (REV. 7/2011)

INCIDENT NUMBER	
17CALNU010045	
CASE NAME	
TUBBS	
UNIT	CASE NUMBER
LNU	

DAY	MONTH	DATE	YEAR	COUNTY	REGION	UNIT	CASE NUMBER
SUN	OCT	22	2017	NAPA	CNR	LNU	

1.  Receipt  Release    2.  Evidence     Found Property     Safe Keeping     12028.5 PC (See Below)

3. Name DANIEL DAVES, ROBERT TRUMBULL, PC&E

4. Residence Address: \_\_\_\_\_ Phone: \_\_\_\_\_

5. Business Address: 77 BEAL ST., SAN FRANCISCO Phone: 415-559-9221

6. Item	7. Quantity	8. Description
E-20	1	1200 BENNETT LANE SMART METER
E-21	1	1177 BENNETT LANE SMART METER
E-22	1	1110 BENNETT LANE SMART METER

9. Signature of Owner or Agent [Signature] Robert Trumbull

10. Received or Released by CAL FIRE, SCOTT LOHSE #2121

11. **AFFIDAVIT OF FINDER OF PROPERTY**

I declare that on: DATE: 10/22/17 TIME: 10:10 AM found or saved the above-described property and that the owner is now known to me. I have not secreted, withheld, or disposed of any part of said property; and I have saved the property from 1200 DENNETT LANE, 1177 BENNETT LANE, 1110 BENNETT in the following manner SMART METERS REMOVED BY PC&E REPRESENTATIVE DANIEL DAVES

I declare under PENALTY OF PERJURY that the foregoing is true.

Signed: [Signature] SCOTT LOHSE #2121 Date: 10/22/17

Witness: [Signature] JOHN MARTINEZ #2987 Date: 10/22/17

12. **12028.5 PC WEAPON/FIREARMS SEIZURE**

Weapon and/or firearms seized and taken into temporary custody pursuant to 12028.5 PC shall be held by the agency for no less than 48 hours but no later than 72 hours, unless in accordance with 12028.5(e) PC, forfeiture proceedings are initiated by the seizing agency. To inquire about the return of your weapon(s) and/ or firearm(s), contact the property Room Clerk of the \_\_\_\_\_ Station at phone number ( ) - \_\_\_\_\_ during normal business hours. You will be notified with in ten (10) business days if forfeiture proceedings are initiated. Weapons and/or firearms not claimed within twelve (12) months of the date of seizure shall be deemed a nuisance and disposed of in accordance with 12028.5(d) PC



# PROPERTY REPORT

STATE OF CALIFORNIA  
DEPARTMENT OF FORESTRY AND FIRE PROTECTION  
LE-92 (REV. 8/2014)

INCIDENT NUMBER

CALNU010045

CASE NAME

TUBBS

CASE NUMBER

DAY	MONTH	DATE	YEAR	COUNTY	REGION	UNIT
SUN	OCT	08	2017	NAPA	CNR	LNU

1.  Receipt  Release      2.  Evidence  Found Property  Safe Keeping

3. Name: MARIA DE LUCA

4. Residence Address: \_\_\_\_\_ Phone: \_\_\_\_\_

5. Business Address: 1850 SOSCAL AVE. NAPA, CA 94559 Phone: 707-257-5953

6. Item	7. Quantity	8. Description
1-19	N/A	Items 1 through 19 are not PGE equipment/property.
20	1	Smart Meter from 1200 Bennett Lane, Calistoga, CA.
21	1	Smart Meter from 1177 Bennett Lane, Calistoga, CA.
22	1	Smart Meter from 1110 Bennett Lane, Calistoga, CA.
23-26	N/A	Items 23 through 26 are not PGE equipment/property.
27	1	Fuse #1 from power pole east of pole 773 identified with blue flag.
28	1	Fuse #2 from power pole east of pole 773 identified with white flag.
29	1	Fuse #3 from power pole 773 identified with red flag.
30	1	Fuse #4 from power pole 773 identified with blue flag.
31	1	Fuse #5 from power pole 773 identified with white flag.
32	1	PGE electrical line drop from pole at 1128 Bennett Lane to primary structure at 1128 Bennett Lane.
33	1	Fuse #6 from 1128 Bennett lane pole identified with white flag.
34	1	Fuse #7 from 1128 Bennett lane pole identified with blue flag.
35-39	N/A	All additional items from are not PGE equipment/property.

9. Signature of Owner or Agent: Maria De Luca  
(If present or known)

10. Received or Released by: \_\_\_\_\_

11. **AFFIDAVIT OF FINDER OF PROPERTY**  
 I declare that on: DATE: 10/25/17 TIME: 1:30 PM I found or saved the above-described property and that the owner is not known to me. I have not secreted, withheld, or disposed of any part of said property; and I have saved the property from PGE in the following manner: COLLECTED AND PHOTOGRAPHED IN THE PRESENCE OF PGE

I declare under PENALTY OF PERJURY that the foregoing is true.  
 Signed: [Signature] Date: 10-27-17  
 Witness: [Signature] SCOTT COHSE Date: 10/27/17  
 \_\_\_\_\_ of \_\_\_\_\_

Original to case file; Copy 1 misc; Copy 2 000000



# CHAIN OF CUSTODY

STATE OF CALIFORNIA  
DEPARTMENT OF FORESTRY AND FIRE PROTECTION  
LE 76 (REV. 7/2011)

<b>INCIDENT NUMBER</b>
17CALNU010045
<b>CASE NAME</b>
TUBBS
<b>CASE NUMBER</b>

DAY	MONTH	DATE	YEAR	COUNTY	REGION	UNIT	CASE NUMBER
SUN	OCT	8	2017	NAPA	CNR	LNU	

ITEM NO	FROM (PRINT NAME)	SIGNATURE	I.D. NUMBER	DATE	TIME	<input type="checkbox"/> AM <input checked="" type="checkbox"/> PM
Items 27 - 32 and items 33 - 34	<b>Maria De Luca</b>			<b>10/25</b>	<b>1330</b>	<input checked="" type="checkbox"/> PM
	<b>John Martinez</b>		<b>2987</b>	<b>10/25</b>	<b>1330</b>	<input checked="" type="checkbox"/> PM

**COMMENTS**  
The items listed under "ITEM NO" were collected on October 25, 2017 on Bennett Road adjacent next to 1128 Bennett Road and on the property identified as 1128 Bennett Lane.

ITEM NO	FROM (PRINT NAME)	SIGNATURE	I.D. NUMBER	DATE	TIME	<input type="checkbox"/> AM <input type="checkbox"/> PM
						<input type="checkbox"/> PM
						<input type="checkbox"/> PM

**COMMENTS**

ITEM NO	FROM (PRINT NAME)	SIGNATURE	I.D. NUMBER	DATE	TIME	<input type="checkbox"/> AM <input type="checkbox"/> PM
						<input type="checkbox"/> PM
						<input type="checkbox"/> PM

**COMMENTS**

ITEM NO	FROM (PRINT NAME)	SIGNATURE	I.D. NUMBER	DATE	TIME	<input type="checkbox"/> AM <input type="checkbox"/> PM
						<input type="checkbox"/> PM
						<input type="checkbox"/> PM

**COMMENTS**

ITEM NO	FROM (PRINT NAME)	SIGNATURE	I.D. NUMBER	DATE	TIME	<input type="checkbox"/> AM <input type="checkbox"/> PM
						<input type="checkbox"/> PM
						<input type="checkbox"/> PM

**COMMENTS**

ITEM NO	FROM (PRINT NAME)	SIGNATURE	I.D. NUMBER	DATE	TIME	<input type="checkbox"/> AM <input type="checkbox"/> PM
						<input type="checkbox"/> PM
						<input type="checkbox"/> PM

**COMMENTS**



# CHAIN OF CUSTODY

STATE OF CALIFORNIA  
DEPARTMENT OF FORESTRY AND FIRE PROTECTION  
LE 76 (REV. 7/2011)

<b>INCIDENT NUMBER</b>	
17CALNU010045	
<b>CASE NAME</b>	
TUBBS	
<b>UNIT</b>	<b>CASE NUMBER</b>
LNU	

DAY	MONTH	DATE	YEAR	COUNTY	REGION	UNIT	CASE NUMBER
THU	March	08	2018	SONOMA	CNR	LNU	

ITEM NO	FROM (PRINT NAME)	SIGNATURE	I.D. NUMBER	DATE	TIME	<input type="checkbox"/> AM <input checked="" type="checkbox"/> PM
E-1	John Martinez		2987	3/8/18	4:10	<input checked="" type="checkbox"/> PM
	TO (PRINTED NAME)	SIGNATURE	I.D. NUMBER	DATE	TIME	<input type="checkbox"/> AM <input type="checkbox"/> PM
	JAMES BELLINO			3/8/18	4:10	<input type="checkbox"/> AM <input type="checkbox"/> PM
COMMENTS Transfer of evidence to metallurgist for analysis.						
E-2	John Martinez		2987	3/8/18	4:10	<input checked="" type="checkbox"/> PM
	TO (PRINTED NAME)	SIGNATURE	I.D. NUMBER	DATE	TIME	<input type="checkbox"/> AM <input type="checkbox"/> PM
	JAMES BELLINO			3/8/18	4:10	<input type="checkbox"/> AM <input type="checkbox"/> PM
COMMENTS Transfer of evidence to metallurgist for analysis.						
E-5	John Martinez		2987	3/8/18	4:10	<input checked="" type="checkbox"/> PM
	TO (PRINTED NAME)	SIGNATURE	I.D. NUMBER	DATE	TIME	<input type="checkbox"/> AM <input type="checkbox"/> PM
	JAMES BELLINO			3/8/18	4:10	<input type="checkbox"/> AM <input type="checkbox"/> PM
COMMENTS Transfer of evidence to metallurgist for analysis.						
E-25	John Martinez		2987	3/8/18	4:10	<input checked="" type="checkbox"/> PM
	TO (PRINTED NAME)	SIGNATURE	I.D. NUMBER	DATE	TIME	<input type="checkbox"/> AM <input type="checkbox"/> PM
	John Martinez JAMES BELLINO			3/8/18	4:10	<input type="checkbox"/> AM <input type="checkbox"/> PM
COMMENTS Transfer of evidence to metallurgist for analysis.						
E-32	John Martinez		2987	3/8/18	4:10	<input checked="" type="checkbox"/> PM
	TO (PRINTED NAME)	SIGNATURE	I.D. NUMBER	DATE	TIME	<input type="checkbox"/> AM <input type="checkbox"/> PM
	JAMES BELLINO			3/8/18	4:10	<input type="checkbox"/> AM <input type="checkbox"/> PM
COMMENTS Transfer of evidence to metallurgist for analysis.						
ITEM NO	FROM (PRINT NAME)	SIGNATURE	I.D. NUMBER	DATE	TIME	<input type="checkbox"/> AM <input type="checkbox"/> PM



# CHAIN OF CUSTODY

STATE OF CALIFORNIA  
DEPARTMENT OF FORESTRY AND FIRE PROTECTION  
LE 76 (REV. 7/2011)

INCIDENT NUMBER
TUBBS 17LNU010045
CASE NAME
TUBBS

DAY	MONTH	DATE	YEAR	COUNTY	REGION	UNIT	CASE NUMBER
TUE	NOV	6	2018	SONOMA	CNR	LNU	

ITEM NO	FROM (PRINT NAME)	SIGNATURE	I.D. NUMBER	DATE	TIME	<input type="checkbox"/> AM <input checked="" type="checkbox"/> PM
E1	JOHN MARTINEZ	<i>[Signature]</i>	2987	11-6-18	12:45	<input checked="" type="checkbox"/> PM
	TO (PRINTED NAME)	SIGNATURE	I.D. NUMBER	DATE	TIME	<input type="checkbox"/> AM <input checked="" type="checkbox"/> PM
	GARY UBOLDI	<i>[Signature]</i>	2814	11/6/18	12:45	<input checked="" type="checkbox"/> PM
COMMENTS						

ITEM NO	FROM (PRINT NAME)	SIGNATURE	I.D. NUMBER	DATE	TIME	<input type="checkbox"/> AM <input checked="" type="checkbox"/> PM
E2	JOHN MARTINEZ	<i>[Signature]</i>	2987	11-6-18	12:45	<input checked="" type="checkbox"/> PM
	TO (PRINTED NAME)	SIGNATURE	I.D. NUMBER	DATE	TIME	<input type="checkbox"/> AM <input checked="" type="checkbox"/> PM
	Gary Uboldi	<i>[Signature]</i>	2814	11/6/18	12:45	<input checked="" type="checkbox"/> PM
COMMENTS						

ITEM NO	FROM (PRINT NAME)	SIGNATURE	I.D. NUMBER	DATE	TIME	<input type="checkbox"/> AM <input checked="" type="checkbox"/> PM
E5	JOHN MARTINEZ	<i>[Signature]</i>	2987	11-6-18	12:45	<input checked="" type="checkbox"/> PM
	TO (PRINTED NAME)	SIGNATURE	I.D. NUMBER	DATE	TIME	<input type="checkbox"/> AM <input checked="" type="checkbox"/> PM
	Gary Uboldi	<i>[Signature]</i>	2814	11/6/18	12:45	<input checked="" type="checkbox"/> PM
COMMENTS						

ITEM NO	FROM (PRINT NAME)	SIGNATURE	I.D. NUMBER	DATE	TIME	<input type="checkbox"/> AM <input checked="" type="checkbox"/> PM
E25	JOHN MARTINEZ	<i>[Signature]</i>	2987	11-6-18	12:45	<input checked="" type="checkbox"/> PM
	TO (PRINTED NAME)	SIGNATURE	I.D. NUMBER	DATE	TIME	<input type="checkbox"/> AM <input checked="" type="checkbox"/> PM
	Gary Uboldi	<i>[Signature]</i>	2814	11/6/18	12:45	<input checked="" type="checkbox"/> PM
COMMENTS						

ITEM NO	FROM (PRINT NAME)	SIGNATURE	I.D. NUMBER	DATE	TIME	<input type="checkbox"/> AM <input checked="" type="checkbox"/> PM
E32	JOHN MARTINEZ	<i>[Signature]</i>	2987	11-6-18	12:45	<input type="checkbox"/> AM <input checked="" type="checkbox"/> PM
	TO (PRINTED NAME)	SIGNATURE	I.D. NUMBER	DATE	TIME	<input type="checkbox"/> AM <input checked="" type="checkbox"/> PM
	Gary Uboldi	<i>[Signature]</i>	2814	11/6/18	12:45	<input checked="" type="checkbox"/> PM
COMMENTS						

ITEM NO	FROM (PRINT NAME)	SIGNATURE	I.D. NUMBER	DATE	TIME	<input type="checkbox"/> AM <input type="checkbox"/> PM
						<input type="checkbox"/> AM <input type="checkbox"/> PM
	TO (PRINTED NAME)	SIGNATURE	I.D. NUMBER	DATE	TIME	<input type="checkbox"/> AM <input type="checkbox"/> PM
COMMENTS						





PROPERTY REPORT

STATE OF CALIFORNIA
DEPARTMENT OF FORESTRY AND FIRE PROTECTION
LE-92 (REV. 8/2014)

INCIDENT NUMBER

CALNU010045

CASE NAME

TUBBS

Table with columns: DAY, MONTH, DATE, YEAR, COUNTY, REGION, UNIT, CASE NUMBER

1. [X] Receipt [ ] Release 2. [X] Evidence [ ] Found Property [ ] Safe Keeping

3. Name: MARIA DE LUCA

4. Residence Address: Phone:

5. Business Address: 1850 SOSCAL AVE. NAPA, CA 94559 Phone: 707-257-5953

Table with 3 columns: 6. Item, 7. Quantity, 8. Description

9. Signature of Owner or Agent: (If present or known) [Signature]

10. Received or Released by:

11. AFFIDAVIT OF FINDER OF PROPERTY
I declare that on: DATE: 10/21/17 TIME: 1:30 PM I found or saved the above-described property...

I declare under PENALTY OF PERJURY that the foregoing is true.
Signed: [Signature] Date: 10-27-17
Witness: [Signature] SCOTT COHSE Date: 10/21/17



# CHAIN OF CUSTODY

STATE OF CALIFORNIA  
DEPARTMENT OF FORESTRY AND FIRE PROTECTION  
LE 76 (REV. 7/2011)

<b>INCIDENT NUMBER</b>
17CALNU010045
<b>CASE NAME</b>
TUBBS
<b>CASE NUMBER</b>

DAY	MONTH	DATE	YEAR	COUNTY	REGION
SUN	OCT	8	2017	NAPA	CNR

UNIT	CASE NUMBER
LNU	

ITEM NO Items 27 - 32 and items 33 - 34	FROM (PRINT NAME)	SIGNATURE	I.D. NUMBER	DATE	TIME	<input type="checkbox"/> AM <input checked="" type="checkbox"/> PM
	<b>Maria De Luca</b>	<i>[Signature]</i>		10/25	1330	
	TO (PRINTED NAME)	SIGNATURE	I.D. NUMBER	DATE	TIME	<input type="checkbox"/> AM <input checked="" type="checkbox"/> PM
	<b>John Martinez</b>	<i>[Signature]</i>	2987	10/25	1330	

COMMENTS  
The items listed under "ITEM NO" were collected on October 25, 2017 on Bennett Road adjacent next to 1128 Bennett Road and on the property identified as 1128 Bennett Lane.

ITEM NO	FROM (PRINT NAME)	SIGNATURE	I.D. NUMBER	DATE	TIME	<input type="checkbox"/> AM <input type="checkbox"/> PM
	TO (PRINTED NAME)	SIGNATURE	I.D. NUMBER	DATE	TIME	<input type="checkbox"/> AM <input type="checkbox"/> PM
	COMMENTS					

ITEM NO	FROM (PRINT NAME)	SIGNATURE	I.D. NUMBER	DATE	TIME	<input type="checkbox"/> AM <input type="checkbox"/> PM
	TO (PRINTED NAME)	SIGNATURE	I.D. NUMBER	DATE	TIME	<input type="checkbox"/> AM <input type="checkbox"/> PM
	COMMENTS					

ITEM NO	FROM (PRINT NAME)	SIGNATURE	I.D. NUMBER	DATE	TIME	<input type="checkbox"/> AM <input type="checkbox"/> PM
	TO (PRINTED NAME)	SIGNATURE	I.D. NUMBER	DATE	TIME	<input type="checkbox"/> AM <input type="checkbox"/> PM
	COMMENTS					

ITEM NO	FROM (PRINT NAME)	SIGNATURE	I.D. NUMBER	DATE	TIME	<input type="checkbox"/> AM <input type="checkbox"/> PM
	TO (PRINTED NAME)	SIGNATURE	I.D. NUMBER	DATE	TIME	<input type="checkbox"/> AM <input type="checkbox"/> PM
	COMMENTS					

ITEM NO	FROM (PRINT NAME)	SIGNATURE	I.D. NUMBER	DATE	TIME	<input type="checkbox"/> AM <input type="checkbox"/> PM
	TO (PRINTED NAME)	SIGNATURE	I.D. NUMBER	DATE	TIME	<input type="checkbox"/> AM <input type="checkbox"/> PM
	COMMENTS					



# CHAIN OF CUSTODY

STATE OF CALIFORNIA  
DEPARTMENT OF FORESTRY AND FIRE PROTECTION  
LE 76 (REV. 7/2011)

<b>INCIDENT NUMBER</b>
17CALNU010045
<b>CASE NAME</b>
TUBBS
<b>CASE NUMBER</b>

DAY	MONTH	DATE	YEAR	COUNTY	REGION	UNIT	CASE NUMBER
THU	March	08	2018	SONOMA	CNR	LNU	

ITEM NO	FROM (PRINT NAME)	SIGNATURE	I.D. NUMBER	DATE	TIME	<input type="checkbox"/> AM <input checked="" type="checkbox"/> PM
E-1	LNU evidence storage			3/8/18	1:40	<input checked="" type="checkbox"/> PM
	TO (PRINTED NAME)	SIGNATURE	I.D. NUMBER	DATE	TIME	<input type="checkbox"/> AM <input checked="" type="checkbox"/> PM
	John Martinez		2987	3/8/18	1:40	<input checked="" type="checkbox"/> PM
COMMENTS Transfer of evidence to metallurgist for analysis.						

ITEM NO	FROM (PRINT NAME)	SIGNATURE	I.D. NUMBER	DATE	TIME	<input type="checkbox"/> AM <input checked="" type="checkbox"/> PM
E-2	LNU evidence storage			3/8/18	1:40	<input checked="" type="checkbox"/> PM
	TO (PRINTED NAME)	SIGNATURE	I.D. NUMBER	DATE	TIME	<input type="checkbox"/> AM <input checked="" type="checkbox"/> PM
	John Martinez		2987	3/8/18	1:40	<input checked="" type="checkbox"/> PM
COMMENTS Transfer of evidence to metallurgist for analysis.						

ITEM NO	FROM (PRINT NAME)	SIGNATURE	I.D. NUMBER	DATE	TIME	<input type="checkbox"/> AM <input checked="" type="checkbox"/> PM
E-5	LNU evidence storage			3/8/18	1:40	<input checked="" type="checkbox"/> PM
	TO (PRINTED NAME)	SIGNATURE	I.D. NUMBER	DATE	TIME	<input type="checkbox"/> AM <input checked="" type="checkbox"/> PM
	John Martinez		2987	3/8/18	1:40	<input checked="" type="checkbox"/> PM
COMMENTS Transfer of evidence to metallurgist for analysis.						

ITEM NO	FROM (PRINT NAME)	SIGNATURE	I.D. NUMBER	DATE	TIME	<input type="checkbox"/> AM <input checked="" type="checkbox"/> PM
E-25	LNU evidence storage			3/8/18	1:40	<input checked="" type="checkbox"/> PM
	TO (PRINTED NAME)	SIGNATURE	I.D. NUMBER	DATE	TIME	<input type="checkbox"/> AM <input checked="" type="checkbox"/> PM
	John Martinez		2987	3/8/18	1:40	<input checked="" type="checkbox"/> PM
COMMENTS Transfer of evidence to metallurgist for analysis.						

ITEM NO	FROM (PRINT NAME)	SIGNATURE	I.D. NUMBER	DATE	TIME	<input type="checkbox"/> AM <input checked="" type="checkbox"/> PM
E-32	LNU evidence storage			3/8/18	1:40	<input checked="" type="checkbox"/> PM
	TO (PRINTED NAME)	SIGNATURE	I.D. NUMBER	DATE	TIME	<input type="checkbox"/> AM <input checked="" type="checkbox"/> PM
	John Martinez		2987	3/8/18	1:40	<input checked="" type="checkbox"/> PM
COMMENTS Transfer of evidence to metallurgist for analysis.						

ITEM NO	FROM (PRINT NAME)	SIGNATURE	I.D. NUMBER	DATE	TIME	<input type="checkbox"/> AM <input type="checkbox"/> PM
						<input type="checkbox"/> AM <input type="checkbox"/> PM
	TO (PRINTED NAME)	SIGNATURE	I.D. NUMBER	DATE	TIME	<input type="checkbox"/> AM <input type="checkbox"/> PM
						<input type="checkbox"/> AM <input type="checkbox"/> PM
COMMENTS						



# SUPPLEMENTARY INVESTIGATION REPORT

STATE OF CALIFORNIA  
DEPARTMENT OF FORESTRY AND FIRE PROTECTION  
LE 71 (REV. 7/2011)

INCIDENT NUMBER
17 CALNU 010045
CASE NAME
Tubbs
UNIT
CASE NUMBER
LNU
17CALNU010045

DAY	MONTH	DATE	YEAR	COUNTY	REGION	UNIT	CASE NUMBER
WED	June	27	2018	Sonoma	CNR	LNU	17CALNU010045

1 (All times and measurements are approximate)

2

3 I was employed as a peace officer for the California Department of Forestry and Fire Protection  
4 (CAL FIRE) on June 27, 2018. I was tasked with delivering five evidence items to 3400 Crow  
5 Canyon Road in San Ramon, CA.

6

7 At 7:40 a.m., I arrived at the Santa Rosa CAL FIRE Santa Rosa evidence storage. I secured five  
8 evidence items in my issued state vehicle and drove to San Ramon.

9

10 At 9:44 a.m., I arrived at 3400 Crow Canyon Road. I met with CAL FIRE Battalion Chief John  
11 MARTINEZ (BC MARTINEZ). I assisted BC MARTINEZ with removal of five evidence items from my  
12 vehicle to a building located at 3400 Crow Canyon Road.

13

14 At 1:33 p.m., I received Data Drive 2 from BC MARTINEZ to be transported to CAL FIRE Santa  
15 Rosa evidence storage. Pin code number [REDACTED] and instructions on how to unlock Data Drive 2  
16 (unlock-pin-unlock) were included.

17

18 The five evidence items were secured in my vehicle along with Data Drive 2.

19

20 At 1:56 p.m., I left 3400 Crow Canyon Road and drove to CAL FIRE Santa Rosa evidence storage.

21

22 At 4:23 p.m., all six evidence items were entered in to the CAL FIRE Santa Rosa evidence storage.

23

24 END REPORT

25

26

PRINTED NAME	SIGNATURE	BADGE NUMBER	DATE
Kyle Steis	<i>Kyle Steis</i>	2125	6/29/2018



# Anamet, inc Materials Engineering & Laboratory Testing

26102 EDEN LANDING ROAD, SUITE 3 • HAYWARD, CALIFORNIA 94545 • (510) 887-8811 • FAX (510) 887-8427

## EVIDENCE CHAIN OF CUSTODY

Date Transferred: 11-6-18

Anamet File Number and Name: 5005.6055 CAL FIRE

The evidence described below has been transferred on this date:

To:

From:

Attach Business Card or Write Contact Information

Name JOHN MARTINEZ

Company CAL FIRE

Address 6059 HIGHWAY 9  
P.O. DRAWER F-2

Phone 831-254-1720

Email JOHN.MARTINEZ@CALFIRE.CA.GOV



**James Bellino**  
Materials Engineer  
510-887-8811 ext. 132

**Materials Engineering & Laboratory Testing**  
26102 Eden Landing Road, Suite 3  
Hayward, CA 94545-3811  
800-377-7768 • Fax: 510-887-8427  
www.anametinc.com  
jamesb@anametinc.com

Sample #	Sample Identification	Sample Description
1	E-1	COLLECTION OF FRAGMENTS OF CONDUCTOR
2	E-2	PRIVATE LINE CONDUCTOR
3	E-5	WEATHER HEAD - METAL CONDUIT + COPPER WIRES
4	E-25	ROCK W/ MELTED METAL & WIRE FRAGMENTS
5	E-32	PG&E CONDUCTOR
6		
7		
8		
9		
10		

Received by: [Signature] JOHN MARTINEZ Date: 11/6/18 @ 08:40

Relinquished by: [Signature] JAMES BELLINO Date: 11/6/18 @ 18:40

Received by: \_\_\_\_\_ Date: \_\_\_\_\_

Relinquished by: \_\_\_\_\_ Date: \_\_\_\_\_

Last Updated: 5/10/2018

Incident Number	Incident Name	Collection Address	Item	Item Description	Collection Date	Collection Time
171010-8558	Adobe	[REDACTED]	[REDACTED]	[REDACTED]	[REDACTED]	[REDACTED]
171010-8558	Adobe	[REDACTED]	[REDACTED]	[REDACTED]	[REDACTED]	[REDACTED]
171020-8589	Atlas (Location 1)	[REDACTED]	[REDACTED]	[REDACTED]	[REDACTED]	[REDACTED]
171023-8596	Atlas (Location 2)	[REDACTED]	[REDACTED]	[REDACTED]	[REDACTED]	[REDACTED]
171023-8596	Atlas (Location 2)	[REDACTED]	[REDACTED]	[REDACTED]	[REDACTED]	[REDACTED]
171023-8596	Atlas (Location 2)	[REDACTED]	[REDACTED]	[REDACTED]	[REDACTED]	[REDACTED]
171023-8596	Atlas (Location 2)	[REDACTED]	[REDACTED]	[REDACTED]	[REDACTED]	[REDACTED]
171023-8596	Atlas (Location 2)	[REDACTED]	[REDACTED]	[REDACTED]	[REDACTED]	[REDACTED]
171023-8596	Atlas (Location 2)	[REDACTED]	[REDACTED]	[REDACTED]	[REDACTED]	[REDACTED]
171023-8596	Atlas (Location 2)	[REDACTED]	[REDACTED]	[REDACTED]	[REDACTED]	[REDACTED]
171023-8596	Atlas (Location 2)	[REDACTED]	[REDACTED]	[REDACTED]	[REDACTED]	[REDACTED]
171023-8596	Atlas (Location 2)	[REDACTED]	[REDACTED]	[REDACTED]	[REDACTED]	[REDACTED]
171023-8596	Atlas (Location 2)	[REDACTED]	[REDACTED]	[REDACTED]	[REDACTED]	[REDACTED]
171020-8591	Cascade	13916 Cascade Way Browns Valley, CA 95918	Groove Connectors	Four (4) parallel groove connectors (PG's): 2-Type 3 PGs and 2-Type 1 PGs	10/17/2017	About 1:00 PM
171020-8591	Cascade	13916 Cascade Way Browns Valley, CA 95918	Liquid Transformer Fuses	2 unblown liquid transformer fuses	10/17/2017	About 1:00 PM
171020-8591	Cascade	13916 Cascade Way Browns Valley, CA 95918	Pole and Cross Arm	Dead end transformer pole with cross arm	11/10/2017	9:00 AM - 12:00 PM
171020-8591	Cascade	13916 Cascade Way Browns Valley, CA 95918	Transformer	Transformer	11/10/2017	9:00 AM - 12:00 PM
171020-8591	Cascade	14034 Cascade Way Browns Valley, CA 95918	Smart Meter	PG&E electric SmartMeter # 106 399 627/1007531164 (attached to panel cover with locking ring)	4/20/2018	12:00 PM - 2:00 PM
171020-8591	Cascade	14034 Cascade Way Browns Valley, CA 95918	Pole	Customer-owned Pole Section with Street Light attached (about 6'-2" long)	4/20/2018	12:00 PM - 2:00 PM
171020-8591	Cascade	14034 Cascade Way Browns Valley, CA 95918	Pole	Customer-owned Pole Section top 3/3, with PG&E Service Drop wire attached (approx.. length 5'-11")	4/20/2018	12:00 PM - 2:00 PM
171020-8591	Cascade	14034 Cascade Way Browns Valley, CA 95918	Pole	Customer-owned Pole Section 1/2 with customer panel and ground attached (about 6' long)	4/20/2018	12:00 PM - 2:00 PM
171020-8591	Cascade	14034 Cascade Way Browns Valley, CA 95918	Pole	Customer-owned Pole butt section (about 7'-1/2" long)	4/20/2018	12:00 PM - 2:00 PM

Incident Number	Incident Name	Collection Address	Item	Item Description	Collection Date	Collection Time
171020-8591	Cascade	14034 Cascade Way Browns Valley, CA 95918	Dryer	Dryer (plastic wrapped)	4/20/2018	12:00 PM - 2:00 PM
171020-8591	Cascade	14034 Cascade Way Browns Valley, CA 95918	Customer wiring/Dryer parts	Bag of customer wiring and parts from dryer/appliance	4/20/2018	12:00 PM - 2:00 PM
171010-8557	Cherokee	3401 Cherokee Rd Oroville, CA 95965	Coil of #4 ASCR	Coil of #4 ASCR	10/10/2017	About 9:30 AM
171010-8557	Cherokee	3401 Cherokee Rd Oroville, CA 95965	Tree Branch	Approx 25 ft branch from healthy California White Oak/Valley Oak tree	11/9/2017	9:00 AM - 11:00 AM
171010-8557	Cherokee	3401 Cherokee Rd Oroville, CA 95965	Tree Branch	Tree Branch Base Section where limb broke from, about 5'10" long by about 2'2" circumference.	11/9/2017	9:00 AM - 11:00 AM
171013-8569	La Porte	167 Darby Rd Bangor, CA 95914	Cross Arm	Sections of burnt and broken cross arm	10/14/2017	About 12:00 PM
171013-8569	La Porte	167 Darby Rd Bangor, CA 95914	Insulator	Sections of broken insulator and whole insulator (one was broken in pieces and one was intact)	10/14/2017	About 12:00 PM
171013-8569	La Porte	167 Darby Rd Bangor, CA 95914	Conductor	Coil of power line (burnt on one end, cut on other end)	10/14/2017	About 12:00 PM
171013-8569	La Porte	167 Darby Rd Bangor, CA 95914	Pole	Top few feet of burnt pole	10/17/17 & 10/24/2017	About 12:00 PM on both dates
171013-8569	La Porte	167 Darby Rd Bangor, CA 95914	Cross Arm	Wood cross-arm (about 4'-2 1/2" in length), partially burned on one side; found on ground about 10'-4" north by northwest of the subject pole at the site ("High Voltage" sign facing downward)	2/7/2018	5:15 PM
171020-8587	Maacama	[REDACTED]	[REDACTED]	[REDACTED]	[REDACTED]	[REDACTED]
171011-8563	McCourtney	[REDACTED]	[REDACTED]	[REDACTED]	[REDACTED]	[REDACTED]
171016-8576	Nuns (Location 1)	1210 Nuns Canyon Road, Glen Ellen, CA 95442	Willow tree	Willow tree and 3 branches	11/14/2017	10:30 AM
171016-8576	Nuns (Location 1)	1210 Nuns Canyon Road, Glen Ellen, CA 95442	Red Alder Tree	Red Alder Tree parts: (#1) base, (#2) trunk 1, (#3) trunk 2, (#4) pole break, (#5) top above break, (#6-12) top pieces, (A) lower branch, (B - F) branches	11/14/2017	10:30 AM
171031-8576	Nuns (Location 1)	1210 Nuns Canyon Rd Glen Ellen, CA 95442	Conductor	Center phase, South Section, Green, found between pole with switch number 6459 and a pole just north of that pole	10/18/2017	3:00 PM
171031-8576	Nuns (Location 1)	1210 Nuns Canyon Rd Glen Ellen, CA 95442	Conductor	Center phase, Center Section, Green, found between pole with switch number 6459 and a pole just north of that pole	10/18/2017	3:00 PM
171031-8576	Nuns (Location 1)	1210 Nuns Canyon Rd Glen Ellen, CA 95442	Conductor	Center phase, North Section, Green, found between pole with switch number 6459 and a pole just north of that pole	10/18/2017	3:00 PM

Incident Number	Incident Name	Collection Address	Item	Item Description	Collection Date	Collection Time
171031-8576	Nuns (Location 1)	1210 Nuns Canyon Rd Glen Ellen, CA 95442	Conductor	West phase, South Section, Blue, found between pole with switch number 6459 and a pole just north of that pole	10/18/2017	3:00 PM
171031-8576	Nuns (Location 1)	1210 Nuns Canyon Rd Glen Ellen, CA 95442	Conductor	West phase, North Section, Blue, found between pole with switch number 6459 and a pole just north of that pole	10/18/2017	3:00 PM
171031-8576	Nuns (Location 1)	1210 Nuns Canyon Rd Glen Ellen, CA 95442	Conductor	Center or West phase, Center Section, marked blue and green, found between pole with switch number 6459 and a pole just north of that pole	10/18/2017	3:00 PM
171031-8606	Nuns (Location 2)	1210 Nuns Canyon Rd Glen Ellen, CA 95442 (-122.512014, 38.398483)	Conductor	Conductor - NE of pole with fuse # 15877	10/20/2017	2:00 PM
171031-8606	Nuns (Location 2)	1210 Nuns Canyon Rd Glen Ellen, CA 95442 (-122.512014, 38.398483)	Insulator	Insulator from pole with fuse # 15877	10/20/2017	2:00 PM
171031-8606	Nuns (Location 2)	1210 Nuns Canyon Rd Glen Ellen, CA 95442 (-122.512014, 38.398483)	Conductor	Conductor - NE of pole with fuse # 15877	10/20/2017	2:00 PM
171031-8606	Nuns (Location 2)	1210 Nuns Canyon Rd Glen Ellen, CA 95442 (-122.512014, 38.398583)	Conductor	Conductor (West phase) - north of pole 102036548	11/1/2017	4:30 PM
171031-8606	Nuns (Location 2)	1210 Nuns Canyon Rd Glen Ellen, CA 95442 (-122.512014, 38.398583)	Conductor	Conductor (East phase) - north of pole 102036548	11/7/2017	4:30 PM
171031-8606	Nuns (Location 2)	1210 Nuns Canyon Rd Glen Ellen, CA 95442 (-122.512014, 38.398583)	Insulator	Insulator from pole 102036548	11/7/2017	4:00 PM
171031-8606	Nuns (Location 2)	1210 Nuns Canyon Rd Glen Ellen, CA 95442 (-122.512014, 38.398583)	AT&T Cable	AT&T cable tags # 02388 and #0253	11/17/2017	6:30 AM
171031-8606	Nuns (Location 2)	1210 Nuns Canyon Rd Glen Ellen, CA 95442 (-122.512014, 38.398583)	Conductor (Copper Wire)	6 copper wire, red, road side, west	11/21/2017	11:15 AM
171031-8606	Nuns (Location 2)	1210 Nuns Canyon Rd Glen Ellen, CA 95442 (-122.512014, 38.398583)	Conductor (Copper Wire)	6 copper wire, blue, east field	11/21/2017	11:15 AM
171020-8585	Oakmont	[REDACTED]	[REDACTED]	[REDACTED]	[REDACTED]	[REDACTED]
171020-8585	Oakmont	[REDACTED]	[REDACTED]	[REDACTED]	[REDACTED]	[REDACTED]



Incident Number	Incident Name	Collection Address	Item	Item Description	Collection Date	Collection Time
171020-8586	Partrick	[REDACTED]	[REDACTED]	[REDACTED]	[REDACTED]	[REDACTED]
171020-8586	Partrick	[REDACTED]	[REDACTED]	[REDACTED]	[REDACTED]	[REDACTED]
171021-8592	Pocket	[REDACTED]	[REDACTED]	[REDACTED]	[REDACTED]	[REDACTED]
171009-8554	Point	[REDACTED]	[REDACTED]	[REDACTED]	[REDACTED]	[REDACTED]
171009-8553	Potter	13700 Powerhouse Road, Potter Valley, 95469	Tree Pieces	Tree pieces removed from tree, labeled 1, 5, 6, 7, 8, 9, 10, 21, 22	2/27/2018	3:00 PM
171009-8553	Potter	13801 N. Busch Road, Potter Valley 95469	Tree Pieces	Tree pieces removed from ground, labeled: 2, 3, 4a, 4b, 4c, 11, 12, 13, 14, 15, 16, 17, 18, 19 and 20	2/27/2018	3:00 PM
171011-8562	Sulphur	[REDACTED]	[REDACTED]	[REDACTED]	[REDACTED]	[REDACTED]
171011-8562	Sulphur	[REDACTED]	[REDACTED]	[REDACTED]	[REDACTED]	[REDACTED]
171011-8562	Sulphur	[REDACTED]	[REDACTED]	[REDACTED]	[REDACTED]	[REDACTED]
171011-8562	Sulphur	[REDACTED]	[REDACTED]	[REDACTED]	[REDACTED]	[REDACTED]
171011-8562	Sulphur	[REDACTED]	[REDACTED]	[REDACTED]	[REDACTED]	[REDACTED]
171026-8601	Tubbs	1128 Bennett Lane, Calistoga CA 94515	Conductor (copper wire)	Stranded copper wire - fitting on one end	2/7/2018	5:15 PM
171026-8601	Tubbs	1128 Bennett Lane, Calistoga CA 94515	Conductor (Copper Wire)	Shorter section of same copper wire, no fitting	2/7/2018	5:15 PM
171026-8601	Tubbs	1128 Bennett Lane, Calistoga CA 94515	Paper casing	Paper casing, 2 inches	2/7/2018	5:15 PM
171026-8601	Tubbs	1128 Bennett Lane, Calistoga CA 94515	Paper casing	Paper casing with threaded fitting on one end, approx. 3 inches	2/7/2018	5:15 PM
171026-8601	Tubbs	1128 Bennett Lane, Calistoga CA 94515	paper casing	Paper casing with threaded fitting on one end, approx. 6 inches	2/7/2018	5:15 PM
171026-8601	Tubbs	1128 Bennett Lane, Calistoga CA 94515	paper casing	Paper casing, 5 inches	2/7/2018	5:15 PM
171026-8601	Tubbs	1128 Bennett Lane, Calistoga CA 94515	Pole	burnt customer-owned power/service pole top approx. 7.5' long, partially charred (dark color all over)	2/9/2018	10:30 AM

Incident Number	Incident Name	Collection Address	Item	Item Description	Collection Date	Collection Time
171026-8601	Tubbs	1128 Bennett Lane, Calistoga CA 94515	Pole	burnt customer-owned power/service pole bottom approx. 17.5' long, partially charred (dark color all over)	2/9/2018	10:30 AM
171026-8601	Tubbs	1151 Bennett Lane, Calistoga, CA 94515	Pole	45' wood pole, cut into three pieces	3/8/2018	1:00 AM
171026-8601	Tubbs	1200 Bennett Lane, Calistoga, CA	Smart Meter	Smart meter #1010346366	4/23/2018	11:00 AM
171026-8601	Tubbs	1128 Bennett Lane, Calistoga, CA 94515	Conductor	Conductor	4/23/2018	2:20 PM
171026-8601	Tubbs	1128 Bennett Lane, Calistoga, CA 94515	Tree Piece	Piece of a tree	4/23/2018	2:20 PM

# **ATTACHMENT C**

## **CPUC Site Visit Observation Report**

## ESRB Site Visit Observation Report

**Date:** October 23 and 25, 2017

**Time:** 1300 hours

**Incident ID:** N/A

**Utility Involved:** PG&E

**Investigator:** Wilson Tsai & Raymond Cho

**Date and Time of Incident:** October 8, 2017, 2145 hours

**Location of Incident:** 1128 Bennett Lane, Calistoga, Napa County, 94515

### Summary of Initial Report:

On Wednesday, October 25, 2017, near 1128 Bennett Lane, in the City of Calistoga, Napa County, CAL FIRE took possession of three in-service fuse cutouts at fuse cutout #773 on the Calistoga-1101, 12 kV circuit. CAL FIRE also retained two sets of in-service transformer fused cutouts, and a secondary service conductor that had detached from the fire-damaged home at the aforementioned address. No damage to PG&E equipment was readily apparent. This information is preliminary and PG&E is fully cooperating with Cal Fire.

**Reason for Reporting:** The incident was reported under the Property Damage criterion.

### Field Findings:

On October 23, 2017, Maryam Ebke, Lee Palmer, Wilson Tsai and I met with John Martinez and Greg Roath of CAL FIRE. John is the lead investigator for the fire at this location named the Tubbs Fire. John walked us through the incident site and explained his theories of what he thought may have ignited the fire.

Using the structure as a starting point, myself and Wilson took measurements and walked the pole line from the residence toward the PG&E owned pole at the bottom of the hill (Bennett Lane). In total, we documented seven poles – three were privately owned poles (see notes for measurements). The first pole closest to the structure was completely burned through the stub and was privately owned. This pole was fed from the meter with a private service conductor that led to another two private poles that eventually feed a water pump. The PG&E owned service drop attached to the first PG&E owned pole closest to the structure, fed a weather head on the structure from the PG&E transformer mounted on the pole. The PG&E primary span went from the first PG&E owned pole and heads down the hill to Bennett Lane.

As we walked the incident site, we noticed residential Romex wiring used to feed electricity to different areas of the property. This seemed to be an unpermitted installation because using this type of wiring is normally used inside structure walls. John pointed out that he could not identify any vegetation that

may have caused a failure of the service conductors feeding the structure. Both service conductors feeding the weather head and coming from the meter were found on the ground. John also noted that during the incident a PG&E troubleman had replaced operated fuses at one of the poles on Bennett Lane.

At the top of the privately owned pole that fed the water pump, we noticed significant charring which may represent an ignition source. The base of this pole was not charred as significantly.

On October 25, 2017, I returned with Koko Tomassian and Ryan Yamamoto to witness PG&E remove electric facilities for CAL FIRE investigators to retain. I witnessed CAL FIRE retained a total of eight fuse cutouts and three private service conductors at the privately owned pole closest to the water pump. I asked the PG&E supervisor if the fuses were retained and he stated that he was not sure but the fuses were likely disposed after the new fuses were installed.

I also walked the service drop feeding the second residential structure from the PG&E owned pole and found a tree growing around, capturing the service drop. Walking further down to the neighboring residence, I found the power panel open with all circuit breakers in the open position.

**Witnesses/Person(s) Involved:**

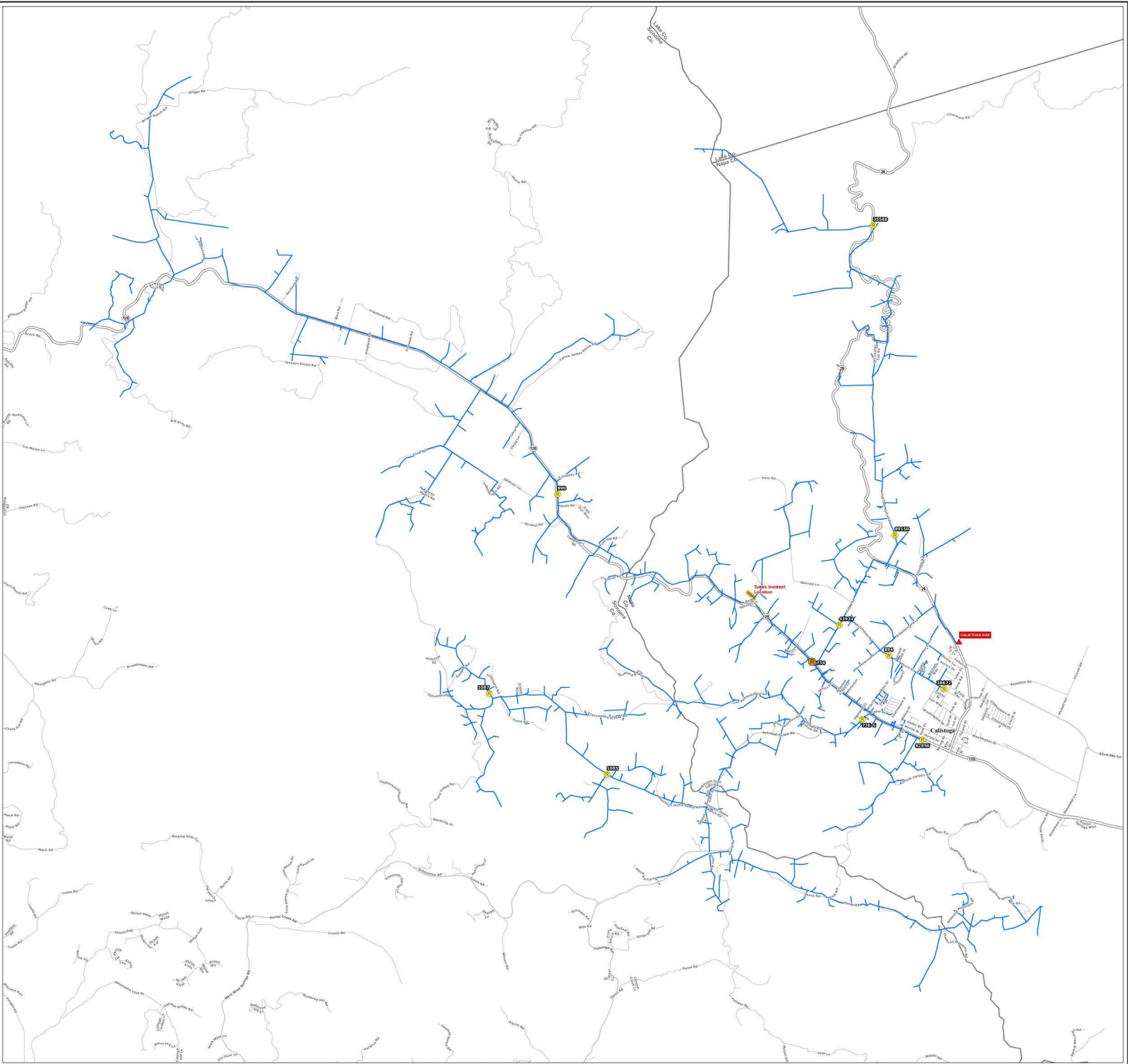
<b>Name</b>	<b>Title</b>	<b>Phone Number</b>	<b>Email</b>
Wilson Tsai	Utilities Engineer	(415) 703-1359	<a href="mailto:wt1@cpuc.ca.gov">wt1@cpuc.ca.gov</a>
Raymond Cho	Sr. Utilities Engineer	(415) 703-2236	<a href="mailto:rc7@cpuc.ca.gov">rc7@cpuc.ca.gov</a>
Lee Palmer	SED Deputy Director	(415) 703-2369	<a href="mailto:Leslie.Palmer@cpuc.ca.gov">Leslie.Palmer@cpuc.ca.gov</a>
Maryam Ebke	Deputy Executive Director	(415) 703-2271	<a href="mailto:Maryam.Ebke@cpuc.ca.gov">Maryam.Ebke@cpuc.ca.gov</a>
John Martinez	CAL FIRE Investigator	(831) 254-1720	<a href="mailto:John.Martinez@fire.ca.gov">John.Martinez@fire.ca.gov</a>
Greg Roath	CAL FIRE Investigator	(530) 598-2625	<a href="mailto:Greg.Roath@fire.ca.gov">Greg.Roath@fire.ca.gov</a>
Jadwinder Singh	PG&E Regulatory	(415) 990-1530	J112@pge.com
Maria Deluca	PG&E Investigator	(415) 990-1530	
██████████	PG&E Supervisor	██████████	

**Drawing/Photos:**

See photos folder.

# **ATTACHMENT D**

## **PG&E Calistoga 1101 Circuit Map**



**MAP 18**  
**CALISTOGA 1101**  
**Tubbs**

● Incident Location    
 ▲ Substation    
 — Incident Distribution Circuit  
● Recloser in 2017 Pilot Program  
● Recloser



While every effort has been made to provide accurate maps, it is possible that printing might not reflect actual conditions, as determined by CalFire Planning Systems or other physical system measuring techniques.

