

ORIGINAL

Decision 90 03 050 MARCH 28, 1990

BEFORE THE PUBLIC UTILITIES COMMISSION OF THE STATE OF CALIFORNIA

In the Matter of the Application of )  
 LOS ANGELES COUNTY TRANSPORTATION COMMISSION ) Application 88-07-033  
 for an order authorizing the construction of ) (Filed July 19, 1988)  
 two light rail vehicle tracks at grade along )  
 Flower Street; across two driveways north of )  
 Venice Boulevard at grade; beneath the I-10 )  
 Santa Monica Freeway Grade Separation )  
 Structure designated by California )  
 Department of Transportation as Santa Monica )  
 Viaduct Bridge No. 53-1301 at separated )  
 grade; across the driveway immediately north )  
 of and adjacent to that freeway structure at )  
 grade; across the Santa Monica Freeway on- )  
 ramp at grade; and across 18th Street at )  
 grade, all in the City of Los Angeles )

And Related Matters. )  
 ) Application 88-07-053  
 ) Application 88-08-008  
 ) Application 88-09-034  
 ) Application 89-01-007

OPINION AND ORDER MODIFYING DECISIONS 89-05-040, ET AL.

By Petition to Modify and Consolidate, filed November 15, 1989, the Los Angeles County Transportation Commission (LACTC) requests authority to consolidate and make certain minor technical modifications to: Decision (D.) 89-05-040 in Application (A.) 88-07-033, D.89-07-006 in A.88-08-008, D.89-07-007 in A.88-09-034, D.89-07-008 in A.88-07-053 and D.89-05-053 in A.89-01-007, as more fully described in the Petition and the Appendix attached to this order.

The decisions in the above listed applications authorized, among other things, the mounting of a trolley car symbol above the light rail transit (LRT) signal. LACTC now wishes to place the trolley symbol below the LRT signals, as requested by the Engineering Departments of both the City of Los Angeles and the City of Long Beach.

Discussion

The Commission's Safety Division Traffic Engineering staff has met with LACTC, the City of Los Angeles and the City of Long Beach, as well as engineering consultants, to discuss the changed configuration of the LRT signals. The City Engineers believe that a two-piece hinged sign will be subjected to less of a load from wind than the previously planned sign, which would have been one large single piece with no hinge. The staff after reviewing the proposed plans, believes that placing the trolley symbols below the LRT signals is a safe and reasonable alternative to the previously authorized signal configuration. Detailed drawings of the proposed changes are indicated in the Appendix attached to this order.

LACTC wishes to commence installation of the trolley signs throughout its LRT system at the earliest possible date. It is therefore requested that the usual 30-day effective date on an order be waived. We will make our order effective immediately.

Notice of the Petition for Modification was published in the Commission's Daily Calendar on November 22, 1989. No protests have been received. A public hearing is not necessary.

Findings of Fact

1. LACTC requests authority to modify and consolidate D.89-05-040 in A.88-07-033 and four other decisions and applications as more fully described in Petition for Modification, filed on November 15, 1989 and the Appendix attached to this order, in the City of Los Angeles and the City of Long Beach, Los Angeles County.

2. Modification of the configuration of the light rail transit (LRT) signals is an essential element in the construction of the LRT system.

3. Public convenience, necessity and safety require that the trolley symbol be placed below the LRT signal, as indicated in the Appendix attached to this order.

4. LACTC, City of Los Angeles, City of Long Beach and the Commission's Safety Division-Traffic Engineering Staff are in agreement that the LRT signals should be modified as indicated in the Appendix attached to this order.

Conclusions of Law

1. The Petition for Modification of D. 89-05-040 et al. should be granted as set forth in the following order.

2. The usual 30 day effective date on an order should be waived as LACTC wishes to commence modification of the LRT signals at the earliest possible date.

O R D E R

IT IS ORDERED that:

1. The Los Angeles County Transportation Commission (LACTC) is authorized to modify and consolidate Decisions 89-05-040, 89-05-053, 89-07-006, 89-07-007, and 89-07-008, which correspond to Applications 88-07-033, 89-01-007, 88-08-008, 88-09-034, and 88-07-053, in the cities of Los Angeles and Long Beach, Los Angeles County.

2. LACTC is authorized to modify and revise the light rail transit (LRT) signals by mounting the trolley car symbol below the LRT signal, as indicated in the Appendix, in lieu of mounting the sign on top of the signal as had been previously authorized by D.88-07-033 et al. In all other respects D.88-07-033 et al shall remain in full force and effect.

3. Within 30 days after completion of the work authorized under this Order, LACTC shall notify the Commission's Safety Division in writing that the authorized work has been completed.

A.88-07-033 et al. S/RRT/jae

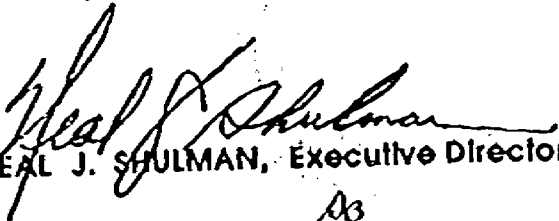
4. The Petition to Modify and Consolidate is granted as set forth above.

This order is effective today.

Dated MARCH 28, 1990, at San Francisco, California.

G. MITCHELL WILK  
President  
FREDERICK R. DUDA  
STANLEY W. HULETT  
JOHN B. OHANIAN  
PATRICIA M. ECKERT  
Commissioners

I CERTIFY THAT THIS DECISION  
WAS APPROVED BY THE ABOVE  
COMMISSIONERS TODAY

  
NEAL J. SHULMAN, Executive Director  
NS

APPENDIX

As part of the project to construct a light rail system, the Los Angeles County Transportation Commission (LACTC) requests permission to modify and alter the configuration of the light rail transit (LRT) signals which were previously authorized by Commission decisions. The decisions authorized the mounting of a trolley car symbol above the LRT signals. LACTC now wishes to place the trolley symbol below the LRT signals. The change was made after detailed engineering studies by the City of Long Beach, the City of Los Angeles and review by the Commission's Safety Division Traffic Engineering staff indicated that the proposed change would improve the safety aspects of the LRT signals. The location, Decision (D.) and Application numbers are listed below:

<u>Location</u>	<u>A. Number</u>	<u>D. Number</u>
12th to Venice on Flower	A.88-08-008	D.89-07-006
Venice to 18th on Flower	A.88-07-033	D.89-05-040
18th on Flower to Long Beach Avenue, on Washington	A.88-09-034	D.89-07-007
27th St. Long Beach Blvd.	A.88-07-053	D.89-07-008
27th St. to 10th on Long Beach Boulevard.	A.89-01-007	D.89-05-053

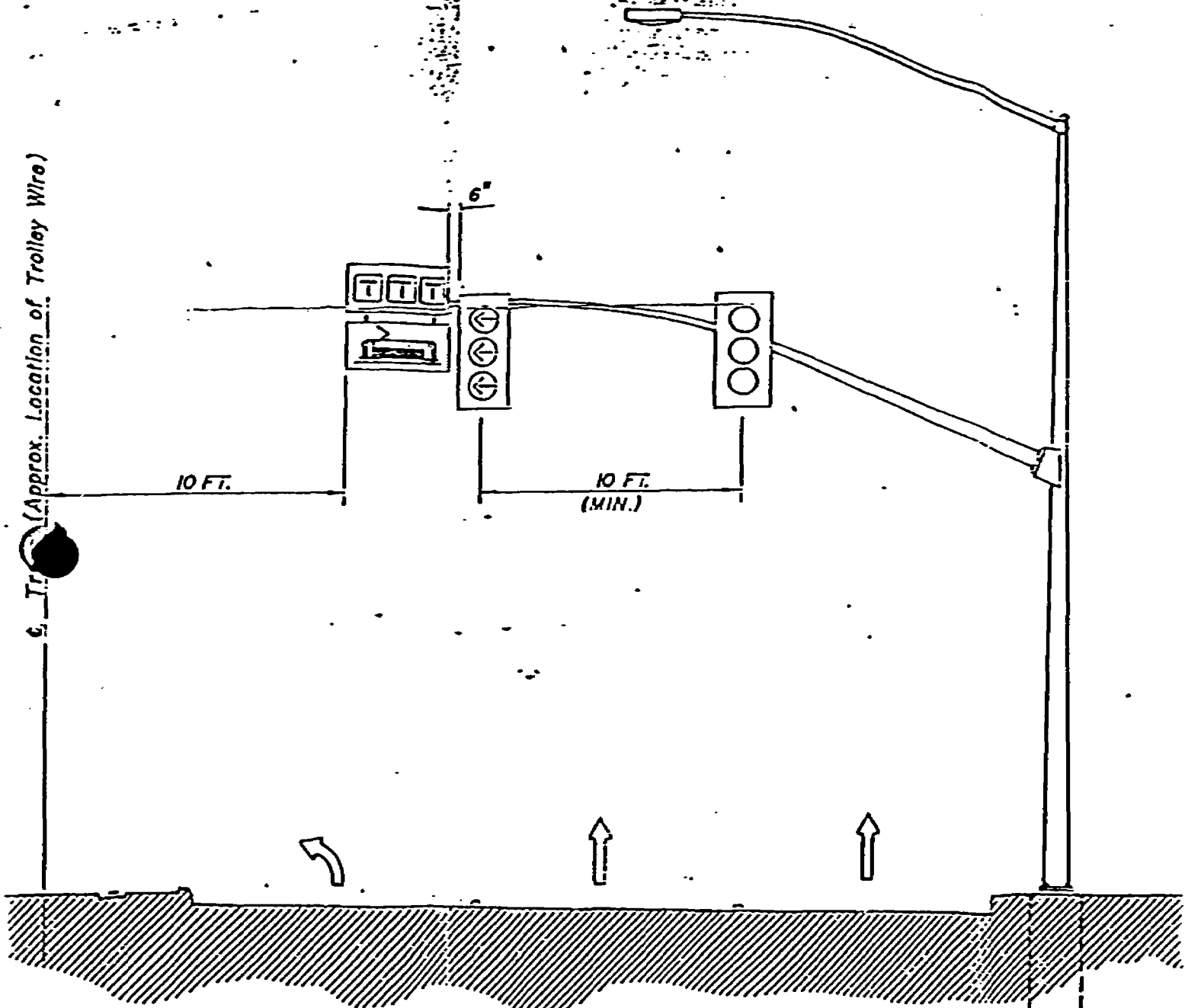
LACTC, in page 3 of the Petition for Modification filed November 15, 1989, states that:

"Accompanying this filing are revised exhibits, attached as Exhibit "E", for each of the five Applications to be modified. LACTC respectfully requests that the revised exhibits illustrating the modified configuration of the trolley car symbol mounting be inserted in place of the original exhibit indicated:

- 1) A.88-07-033, Exhibit B, sheet 2 should be replaced with the revised exhibit labeled "A.88-07-033, revised Exhibit B, sheet 2."
- 2) A.88-08-008, Exhibit D, sheet 2 should be replaced with the exhibit labeled "A.88-08-008 revised Exhibit D, sheet 2."
- 3) A.88-09-034, Exhibit D, sheet 1 should be replaced with the exhibit labeled "A.88-09-034 revised Exhibit D, sheet 1."
- 4) A.88-07-053, Exhibit D should be replaced with the exhibit labeled "A.88-07-053 revised Exhibit D."
- 5) A.89-01-007, Exhibit C, sheet 1 should be replaced with the exhibit labeled "A.89-01-007 revised Exhibit C, sheet 1."

Note: The two accompanying engineering drawing sheets indicate some of the details of the proposed Traffic Signal Head Installation (page 3 of the Appendix) and LRT SIGNAL SIGN-MAST ARM MOUNT (page 4 of the Appendix) modifications. The full detailed alterations of the signals are in the Petition for Modification.

G. Tr. (Approx. Location of Trolley Wire)



LOS ANGELES CBD APPROACH LINE SECTION  
 CONTRACT NO. R01-T01-C140

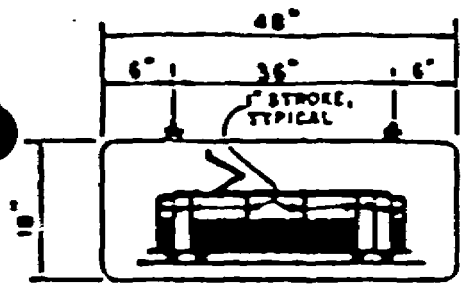
Ex. 1113-4

PREPARED BY RHO 6-5-89  
 CHECKED BY EZA 6-16-89  
 REVIEWED BY KDY 6/22/89

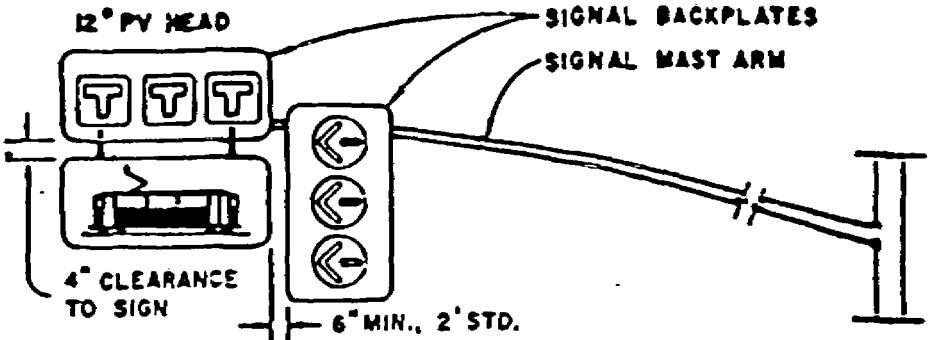
DATE June 22 1989

TYPICAL

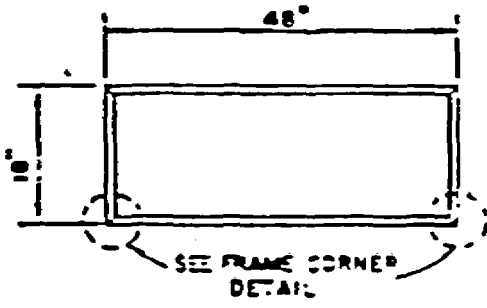
REFERENCE



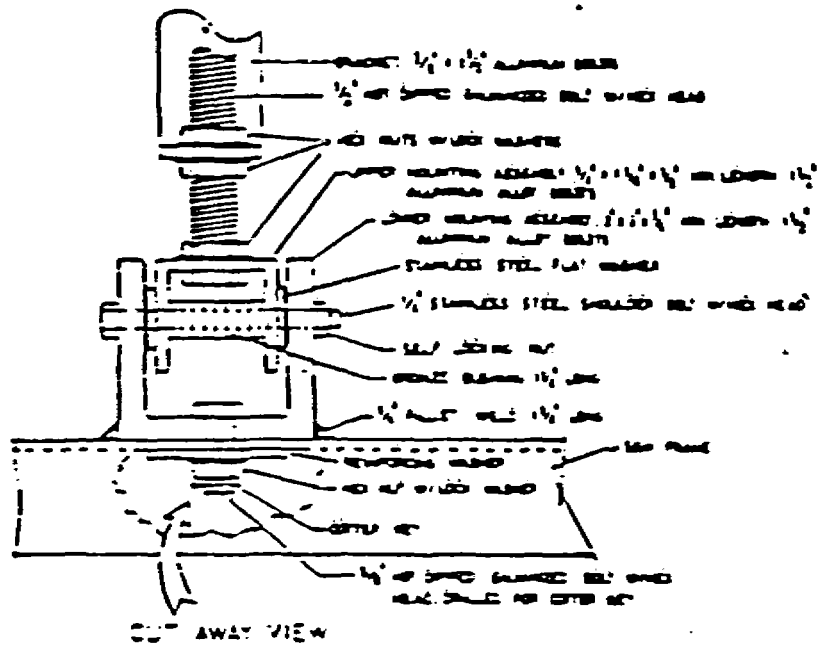
SIGN DETAIL



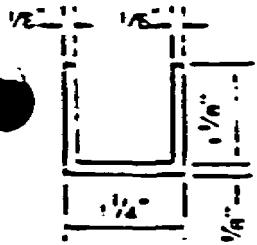
MAST ARM INSTALLATION



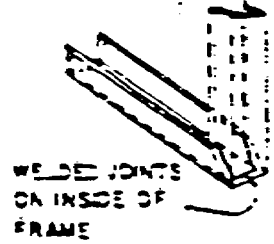
SIGN FRAME



MOUNTING ASSEMBLY (FRONT VIEW)



FRAME SECTION  
ALUMINUM 6063T5



FRAME CORNER

**NOTES:**

1. TOP OF LPT SIGN SHALL BE HORIZONTAL AND EDGES APPROXIMATELY IN LINE WITH THE SIDE EDGES OF THE SIGNAL BACKPLATE.
2. SIGN BRACKET IS ATTACHED TO THE MAST ARM WITH EXTRUDED ALUMINUM STREET NAME SIGN MOUNTING FEATURE. TWO SIGN STRAPS ARE USED TO ATTACH EACH MOUNTING FEATURE TO THE MAST ARM.
3. BACK SIDE OF SIGN SHALL ALSO BE AN LPT SIGN.
4. ALL SIGN FACES SHALL BE EQUAL-INTENSITY REFLECTIVE MATERIAL WITH A BLACK LEGEND ON A WHITE BACKGROUND.

Drawn By	MMO15-23-88
Checked By	15/21/88
Supervised By	LJK 15/24/88
Reviewed By	JHS15/21/88
Revised	
Rev. T.S. Head Clr.	6-26-88

**LRT SIGNAL SIGN  
(MAST ARM MOUNT)**

CITY OF LOS ANGELES  
DEPARTMENT OF TRANSPORTATION  
S. E. ROWE, General Manager

15-21-88

**S. E. Rowe**  
General Manager

DRAWING NO  
**S-450.1**